

NOTES:

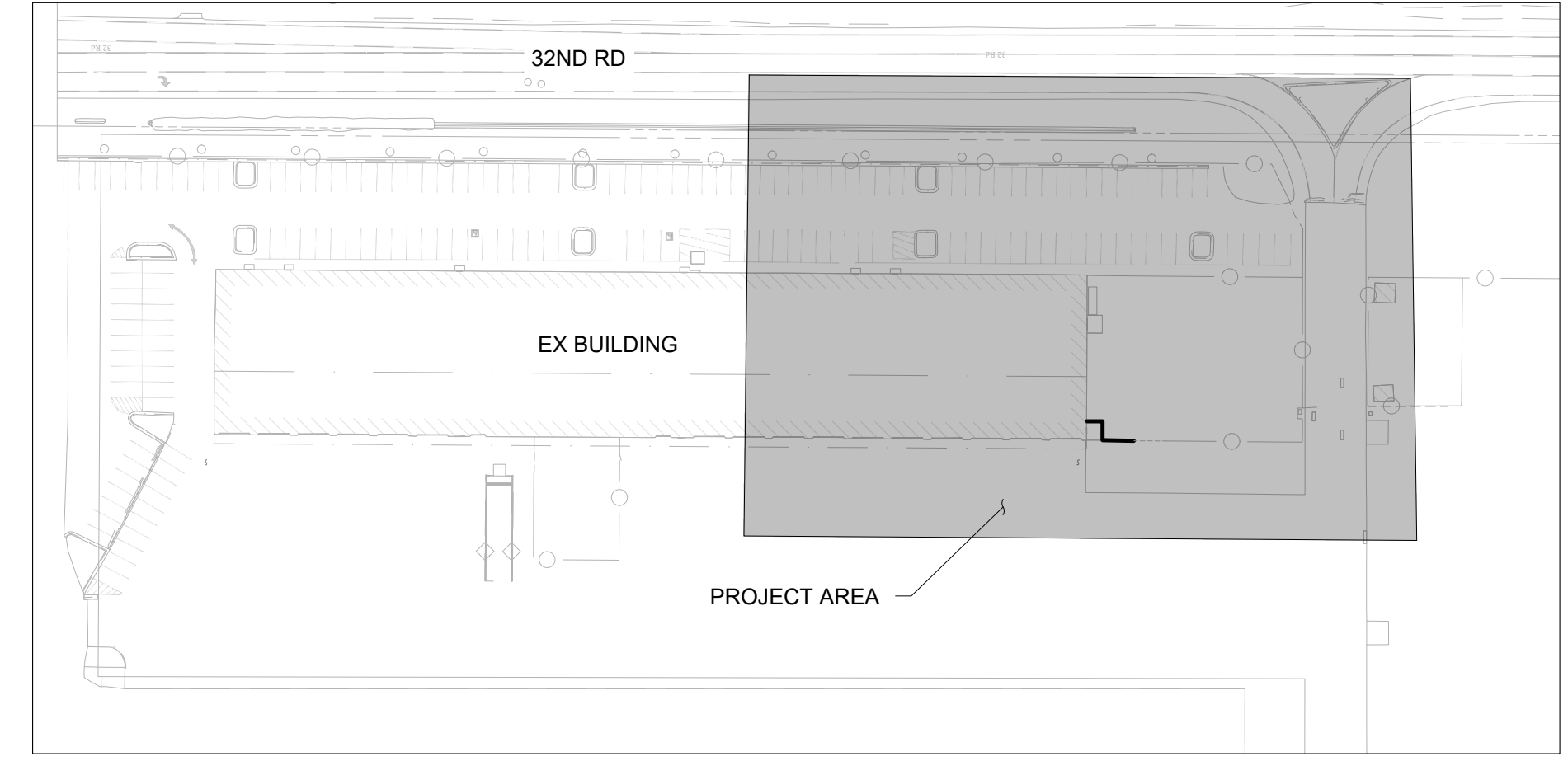
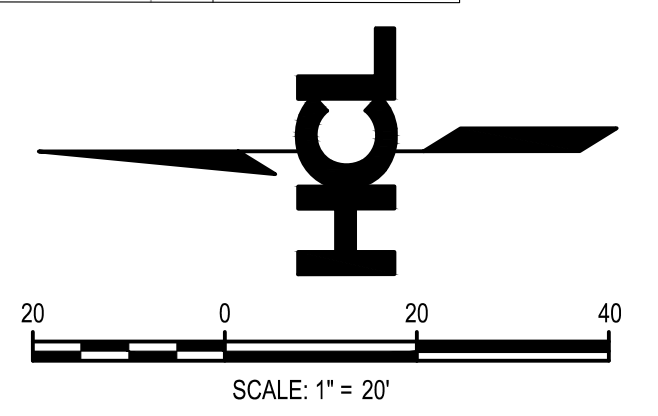
1. ALL EXISTING UTILITIES ARE TO REMAIN AND PROTECTED IN PLACE UNLESS OTHERWISE NOTED.
2. THE LOCATIONS OF EXISTING UNDERGROUND UTILITIES ARE SHOWN IN AN APPROXIMATE MANNER ONLY AND HAVE NOT BEEN INDEPENDENTLY VERIFIED. UNDERGROUND UTILITIES MAY EXIST THAT ARE NOT SHOWN ON THESE PLANS. THE CONTRACTOR SHALL DETERMINE THE EXACT LOCATION OF ALL EXISTING UTILITIES PRIOR TO CONSTRUCTION AND SHALL BE FULLY RESPONSIBLE FOR ANY DAMAGES THAT MAY OCCUR RESULTING FROM THE CONTRACTOR'S FAILURE TO LOCATE AND PROTECT ALL EXISTING UNDERGROUND UTILITIES.
3. CONTRACTOR TO COORDINATE RELOCATION OF MONUMENTS AND LANDSCAPE STRUCTURES WITH OWNER.

DEMOLITION NOTES:

1. IT IS THE CONTRACTOR'S RESPONSIBILITY TO COORDINATE THE LIMITS OF CONSTRUCTION WITH PROPOSED IMPROVEMENTS. REFER TO APPROVED LAYOUT, GRADING, AND STORM PLANS.
2. THE CONTRACTOR SHALL COORDINATE ADDITIONAL DEMOLITION REQUIREMENTS AS NECESSARY FOR CONSTRUCTION ACCESS AND STAGING.
3. THE CONTRACTOR SHALL COORDINATE ADDITIONAL DEMOLITION REQUIREMENTS AS SHOWN IN THE ARCHITECTURAL, STRUCTURAL, MEP, IT AND LANDSCAPE PLANS AND SPECIFICATIONS AND NOTIFY ARCHITECT AND ENGINEER OF ANY DISCREPANCY SUFFICIENTLY IN ADVANCE OF MATERIAL PROCUREMENT AND CONSTRUCTION.
4. BARRIERS/FENCING SHALL BE PROVIDED PRIOR TO SITE DEMOLITION TO PROVIDE FOR THE SAFETY OF WORKERS AND PASSERBY. THE CONTRACTOR SHALL MAINTAIN PEDESTRIAN EGRESS/ACCESS TO ADJACENT BUILDINGS DURING CONSTRUCTION AND SHALL PROVIDE A BARRIER/FENCING PLAN AND SITE LOGISTICS PLAN TO THE OWNER FOR REVIEW PRIOR TO CONSTRUCTION.
5. EXISTING UTILITIES NOT SHOWN TO BE REMOVED/RELOCATED ARE TO REMAIN IN PLACE AND PROTECTED THROUGHOUT THE CONSTRUCTION. CONTRACTOR SHALL TAKE ALL NECESSARY PRECAUTIONS TO PROTECT EXISTING UTILITIES. ANY REQUIRED UTILITY OUTAGES SHALL BE COORDINATED WITH THE UTILITY PROVIDER AND OWNER(S) OF AFFECTED PROPERTIES SUFFICIENTLY IN ADVANCE OF CONSTRUCTION/DEMOLITION.
6. THE CONTRACTOR SHALL ADJUST ALL EXISTING MANHOLES, RIMS, CLEANOUT CAPS, VALVE BOXES, ETC. TO MATCH FINAL GRADE. ALL MANHOLE COVERS, TELECOM BOX COVERS, ETC. SHALL BE REPLACED WITH NEW COVERS IF DAMAGED. THE CONTRACTOR SHALL ADJUST AND REMOVE/AND REPLACE ALL EXISTING FIRE HYDRANTS TO PROPOSED FINISHED GRADE. THE ENGINEER HAS SHOWN THESE ADJUSTMENTS TO THE EXTENT KNOWN AS A CONTRACTOR TO THE CONTRACTOR ONLY. IT IS THE CONTRACTOR'S RESPONSIBILITY TO WALK THE EXISTING SITE PRIOR TO BID AND CONSTRUCTION IN ORDER TO FULLY UNDERSTAND THE SCOPE INVOLVED IN ADJUSTING EXISTING UTILITY SURFACE FEATURES TO FINAL PROPOSED FINISHED GRADE.
7. THE CONTRACTOR SHALL PROVIDE FOR DUST CONTROL DURING DEMOLITION TO INCLUDE COVERING OF ALL TRUCKS HAULING DEBRIS OFFSITE, SWEEPING ADJACENT STREETS, AND APPLYING APPROVED DUST PALLIATIVE AS NECESSARY.
8. THE CONTRACTOR SHALL SWEEP ALL SEDIMENT, DIRT, MUD & DEBRIS TRACKED OR DEPOSITED ON PUBLIC OR PRIVATE STREETS IMMEDIATELY AND REMEDY THE SOURCE OF TRACKING.
9. CONTRACTOR SHALL STRAIGHT SAWCUT EXISTING ASPHALT PAVEMENT AT DEMOLITION LIMITS. APPLY TACKCOAT AT EDGE PRIOR TO PLACING NEW ASPHALT. ALL NEW CURB AND GUTTER OR CONCRETE PAVEMENT ABUTTING EXISTING CONCRETE PLACEMENT, SIDEWALKS AND CURB AND GUTTER AT DEMOLITION LIMITS SHALL BE CUT AT EXISTING JOINTS BEYOND THE SAWCUTS SHOWN IN THE PLANS. ALL CONCRETE PANELS DAMAGED OR PARTIALLY REMOVED FOR CONSTRUCTION SHALL INCLUDE FULL PANEL REPLACEMENT.
10. TREES, LANDSCAPING, AND STRUCTURES NOT DESIGNATED FOR DEMOLITION ARE TO REMAIN PROTECTED THROUGHOUT CONSTRUCTION. THE CONTRACTOR SHALL PRESERVE EXISTING VEGETATION OUTSIDE THE PROJECT LIMITS. IT IS THE CONTRACTOR'S RESPONSIBILITY TO NOTIFY THE ENGINEER SUFFICIENTLY IN ADVANCE OF MATERIAL PROCUREMENT AND CONSTRUCTION IF CONFLICTS EXIST WITH THE PROPOSED FINISH GRADE DESIGN AND EXISTING TREES SHOWN TO REMAIN AND BE PROTECTED IN PLACE.
11. THE CONTRACTOR SHALL COORDINATE SALVAGE OR RELOCATION OF DEMOLITION ITEMS (LIGHTPOLES, SIGNS, FENCES, GATES, ETC.) WITH THE OWNER AND OTHER DESIGN CONSULTANTS.
12. THE CONTRACTOR SHALL FLAG AND MARK ALL TREES TO BE REMOVED AND COORDINATE A PRE-DEMOLITION SITE WALK WITH THE OWNER, CIVIL ENGINEER, AND LANDSCAPE ARCHITECT TO CONFIRM TREES TO BE REMOVED. CONTRACTOR SHALL MARK TREES AND COORDINATE MEETING SUFFICIENTLY IN ADVANCE TO MATERIAL PROCUREMENT AND CONSTRUCTION.
13. THE INFORMATION SHOWN ON THESE DRAWINGS CONCERNING TYPE AND LOCATION OF UNDERGROUND UTILITIES IS NOT GUARANTEED TO BE ACCURATE OR ALL INCLUSIVE. THE CONTRACTOR IS RESPONSIBLE FOR MAKING HIS OR HER DETERMINATION AS TO THE TYPE AND LOCATION OF UNDERGROUND UTILITIES AS NECESSARY TO AVOID DAMAGE THERETO.
14. CONTRACTOR SHALL MAINTAIN ACCESS TO EXISTING FIRE HYDRANTS FOR FIRE DEPARTMENT DURING CONSTRUCTION. CONTRACTOR TO COORDINATE WITH FIRE DEPARTMENT FOR ACCESS REQUIREMENTS.

LEGEND

---	5280	EX MAJOR CONTOUR	⊠	EX ELECTRIC METER
---	5281	EX MINOR CONTOUR	⊠	EX ELECTRIC PEDESTAL
---		BOUNDARY	⊠	EX ELECTRIC TRANSFORMER
---		RIGHT OF WAY	⊠	EX LIGHT POLE
---		EX ELECTRICAL LINE	⊠	EX GUY WIRE
---		EX GAS LINE	⊠	EX STORM INLET
---		EX FIBER OPTIC LINE	⊠	EX STORM INLET
---		EX WATER LINE	⊠	EX ROOF DRAIN
---		EX OVERHEAD UTILITY LINE	⊠	EX SANITARY SEWER MANHOLE
---		EX STORM LINE	⊠	EX FIBER OPTIC PEDESTAL
---		EX SANITARY SEWER LINE	⊠	EX MISCELLANEOUS UTILITY
---		EX IRRIGATION LINE	⊠	EX MISCELLANEOUS MANHOLE
---		EX CURB FLOW LINE	⊠	EX HANDICAP PARKING
---		EX CHAIN LINK FENCE	⊠	EX UTILITY HAND HOLE
---		EX WOOD FENCE	⊠	EX DECIDUOUS TREE
---		EX IRON FENCE	⊠	EX CONIFEROUS TREE
---		EX FENCE GATE	⊠	EX LANDSCAPE BOULDER
---		EX BUSHLINE	⊠	EX LANDSCAPE BUSH
---		6" WIDE SOLID YELLOW STRIPING	⊠	FINISHED FLOOR ELEVATION
---		6" WIDE SOLID WHITE STRIPING	⊠	
---		ABANDON SANITARY LINE	⊠	



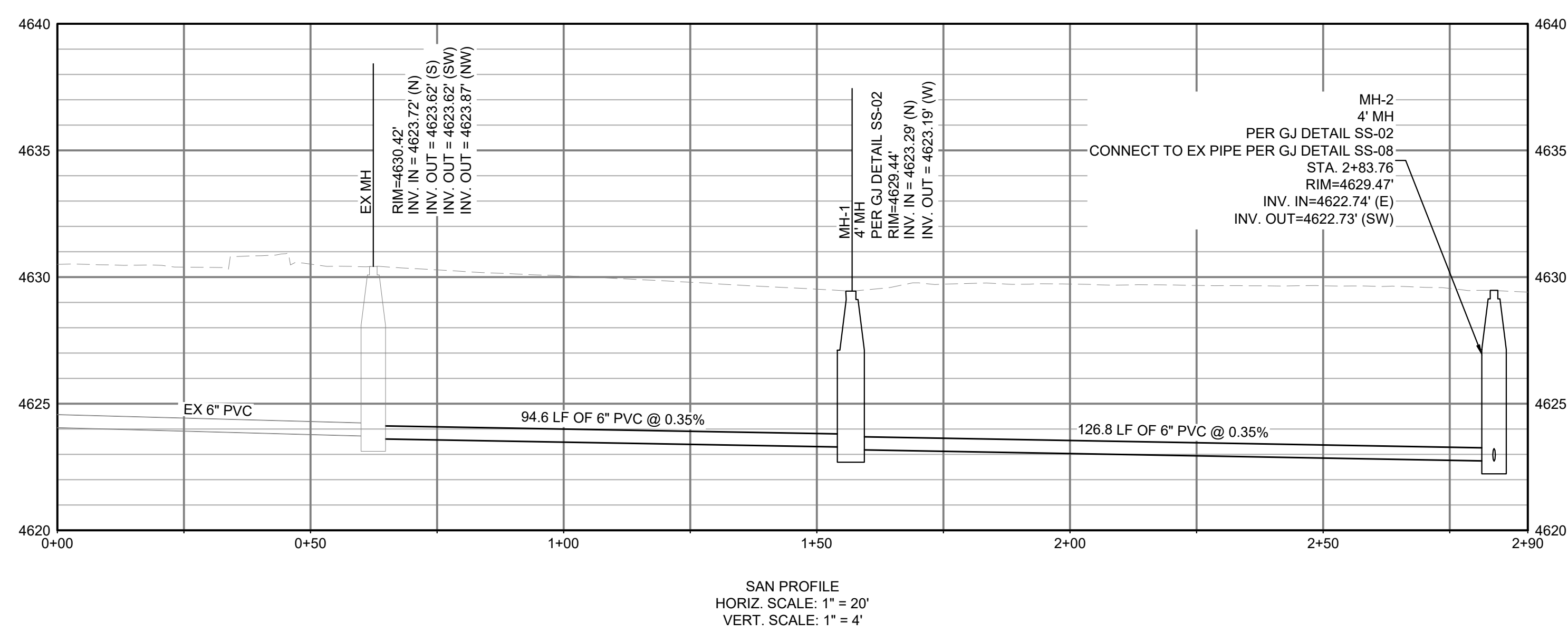
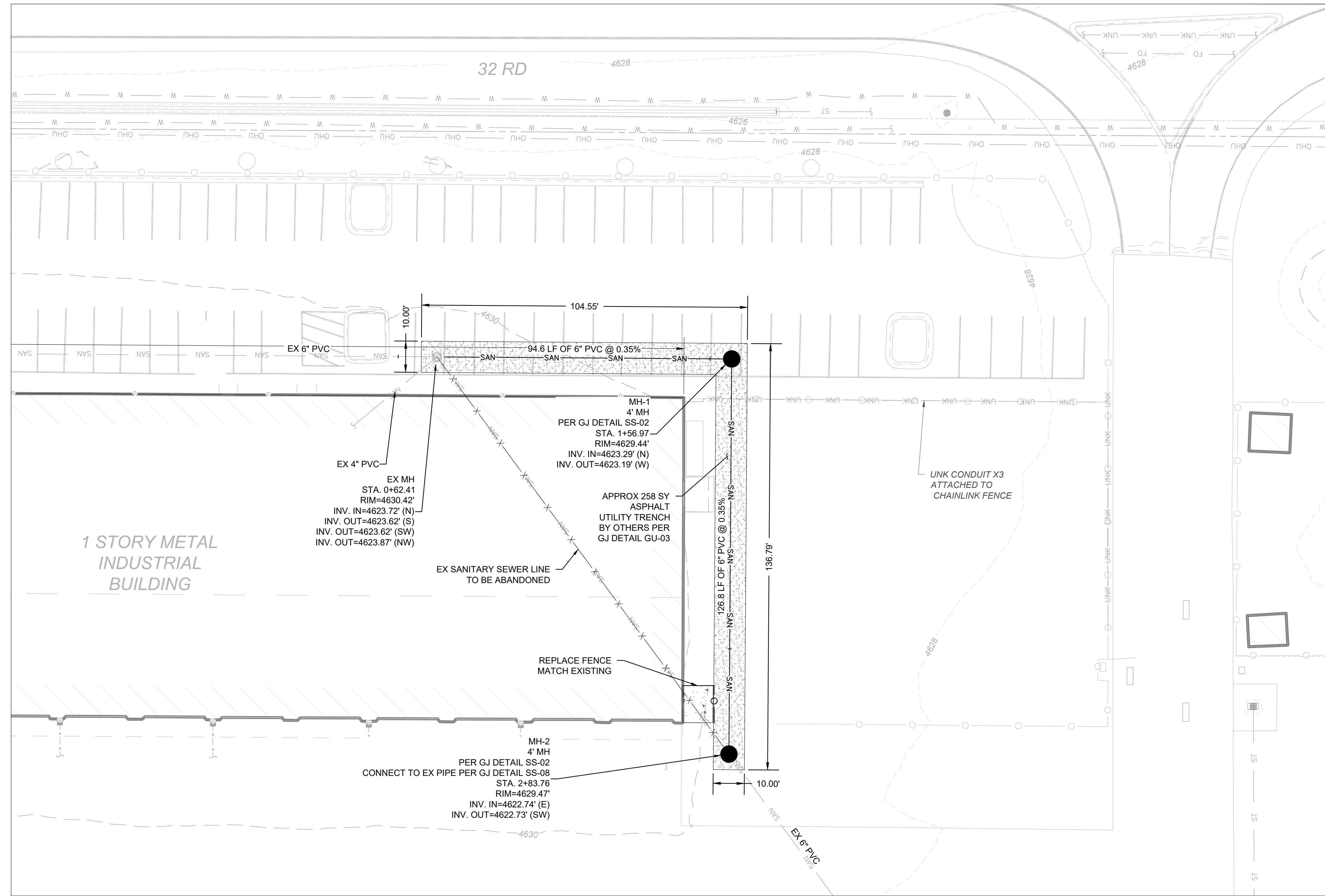
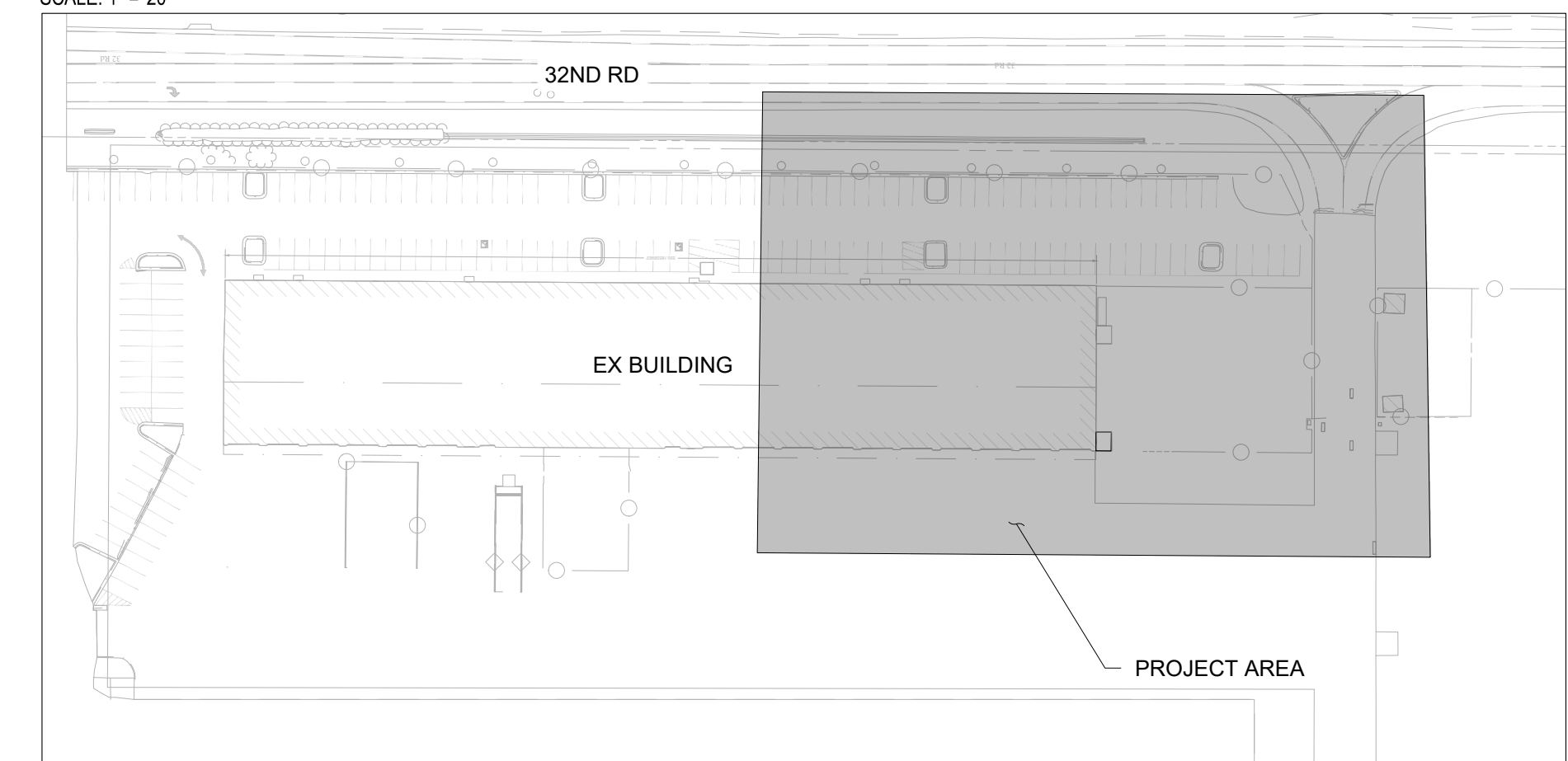
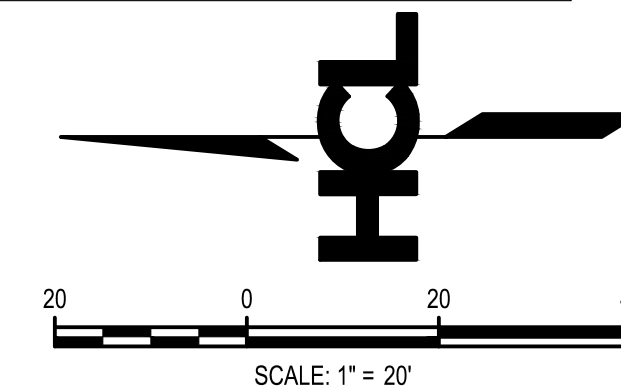
KEY MAP
SCALE: 1" = 100'

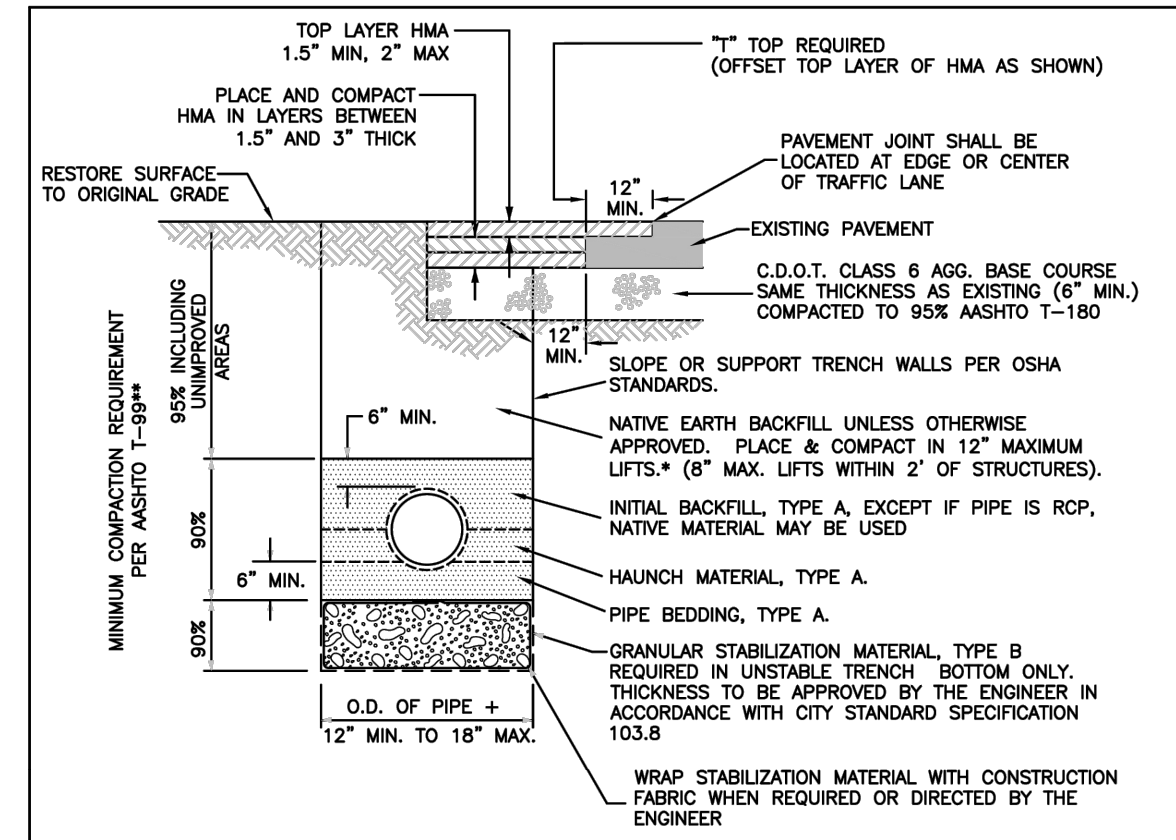
SANITARY SEWER NOTES:

1. ALL MATERIALS AND WORKMANSHIP SHALL COMPLY WITH THE STANDARDS AND SPECIFICATIONS OF THE CITY OF GRAND JUNCTION.
2. ALL SANITARY SEWER PIPE SHALL BE PVC SDR-35 (ASTM 3034) UNLESS OTHERWISE SPECIFIED.
3. ALL CONNECTIONS TO THE NEW SEWER LINES SHALL BE ACCOMPLISHED WITH FULL BODY WYES OR TEES. TAPPING SADDLES WILL NOT BE ALLOWED, EXCEPT AS NOTED.
4. ALL TRENCHES SHALL BE COMPACTED TO 95% WITHIN 2% OF OPTIMUM MOISTURE CONTENT, AS DETERMINED AASHTO T-99.
5. A MINIMUM OF 10 FT. OF SEPARATION SHALL BE MAINTAINED AT ALL TIMES BETWEEN THE WATERLINE AND SEWER LINE EXCEPT AT SPECIFIED CROSSINGS.
6. THE CONTRACTOR IS RESPONSIBLE FOR ALL REQUIRED SEWER LINE TESTING TO BE COMPLETED IN ACCORDANCE WITH THE CITY OF GRAND JUNCTION STANDARDS AND SPECIFICATIONS. FINAL TESTING TO BE ACCOMPLISHED ONLY AFTER ALL OTHER INFRASTRUCTURE HAS BEEN INSTALLED. THIS INCLUDES WATERLINES, GAS LINES, ELECTRIC LINES, ETC. TESTING WILL BE PERFORMED AFTER ALL COMPACTION OF STREET SUBGRADE AND PRIOR TO STREET PAVING. FINAL LAMPING WILL ALSO BE ACCOMPLISHED AFTER PAVING IS COMPLETED TO ENSURE THAT THE LINE IS CLEAN. THESE TESTS WILL BE THE BASIS FOR ISSUING THE INITIAL ACCEPTANCE OF THE SEWER LINE EXTENSION.
7. MANHOLES SHALL BE CONSTRUCTED AS SHOWN ON THE CITY OF GRAND JUNCTION STANDARD SANITARY SEWER DETAIL SHEETS SS-02 AND SS-03 AS APPROPRIATE.
8. WATER STOP GASKETS AND CLAMP ASSEMBLIES ARE TO BE FURNISHED AND INSTALLED AT ALL CONNECTIONS TO MANHOLES.
9. METAL GRADE RINGS ARE NOT TO BE USED ON TOP OF MANHOLE RINGS TO ADJUST TO FINISH PAVEMENT ELEVATIONS. ALL ADJUSTMENTS TO FINISH GRADE ON NEW MANHOLES SHALL BE MADE USING CONCRETE GRADE RINGS AND GROUT AS SHOWN ON THE STANDARD DETAILS.
10. WHERE SANITARY SEWERS CROSS UNDER A WATER LINE WITH LESS THAN 18 INCHES OF VERTICAL SEPARATION, AND IN ALL CASES WHERE THE SANITARY SEWER CROSSES OVER THE WATERLINE AT ANY DEPTH, PROVIDE TOTAL CONCRETE ENCASEMENT OF PIPE FOR A LENGTH OF 10 FEET TO EITHER SIDE OF THE WATERLINE.
11. ONLY MATERIALS ON WHICH A PROCTOR TEST CAN BE PERFORMED AND ACCURATE NUCLEAR DENSITY TESTS CAN BE RUN ARE APPROVED FOR SEWER LINE TRENCH BACKFILL UNLESS OTHERWISE APPROVED BY THE ENGINEER.
12. TO INHIBIT THE MOVEMENT OF GROUND WATER THROUGH SEWER BEDDING AND HUNCHING MATERIAL. CLAY CUTOFF WALLS OF NATIVE MATERIAL ARE TO BE CONSTRUCTED APPROXIMATELY 10 FEET UPSTREAM FROM EACH MANHOLE AND AS SHOWN ON SANITARY SEWER PLAN AND PROFILES.
13. NOTIFY AUTHORIZED INSPECTOR 48 HOURS PRIOR TO THE CONSTRUCTION OF THE SANITARY SEWER FACILITIES.
14. SANITARY SEWER SYSTEM (PIPE AND MANHOLES) TO BE PROVIDED BY CITY OF GRAND JUNCTION
15. PAVEMENT TRENCH TO BE PROVIDED BY OTHERS.

LEGEND

---	5280	EX MAJOR CONTOUR	⊕	EX ELECTRIC METER
---	5281	EX MINOR CONTOUR	⊕	EX ELECTRIC PEDESTAL
---		BOUNDARY	⊕	EX ELECTRIC TRANSFORMER
---		RIGHT OF WAY	⊕	EX LIGHT POLE
---		EX ELECTRICAL LINE	⊕	EX GUY WIRE
---		EX GAS LINE	⊕	EX STORM INLET
---		EX FIBER OPTIC LINE	⊕	EX STORM INLET
---		EX WATER LINE	⊕	EX ROOF DRAIN
---		EX OVERHEAD UTILITY LINE	⊕	EX SANITARY SEWER MANHOLE
---		EX STORM LINE	⊕	EX FIBER OPTIC PEDESTAL
---		EX SANITARY SEWER LINE	⊕	EX GAS METER
---		EX IRRIGATION LINE	⊕	EX MISCELLANEOUS UTILITY
---		EX CURB FLOW LINE	⊕	EX MISCELLANEOUS MANHOLE
---		EX IRON FENCE	⊕	EX HANDICAP PARKING
---		EX WOOD FENCE	⊕	EX UTILITY HAND HOLE
---		EX IRON FENCE	⊕	EX DECIDUOUS TREE
---		EX FENCE GATE	⊕	EX CONIFEROUS TREE
---		EX BUSHLINE	⊕	EX LANDSCAPE BOULDER
---		6" WIDE SOLID YELLOW STRIPING	⊕	EX LANDSCAPE BUSH
---		6" WIDE SOLID WHITE STRIPING	⊕	END OF INFORMATION
---		PR FENCE	⊕	FINISHED FLOOR ELEVATION
---		PR WALL	⊕	PR SANITARY MH
---		PR ASPHALT MATCH EX SECTION	⊕	
---		PR SANITARY SEWER	⊕	
---		PR CONCRETE MATCH EX SECTION	⊕	



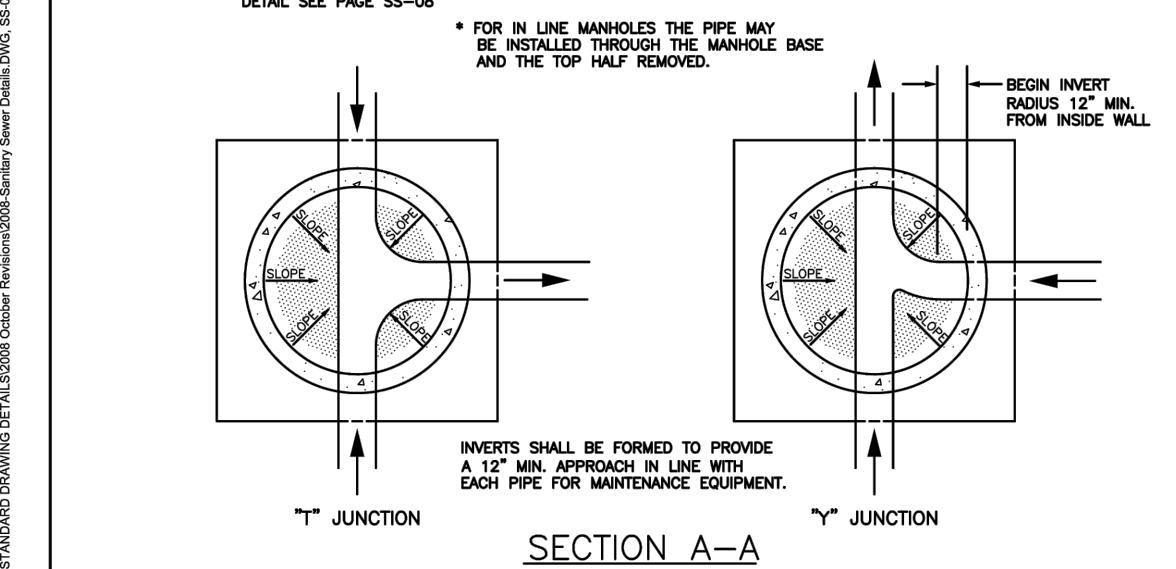
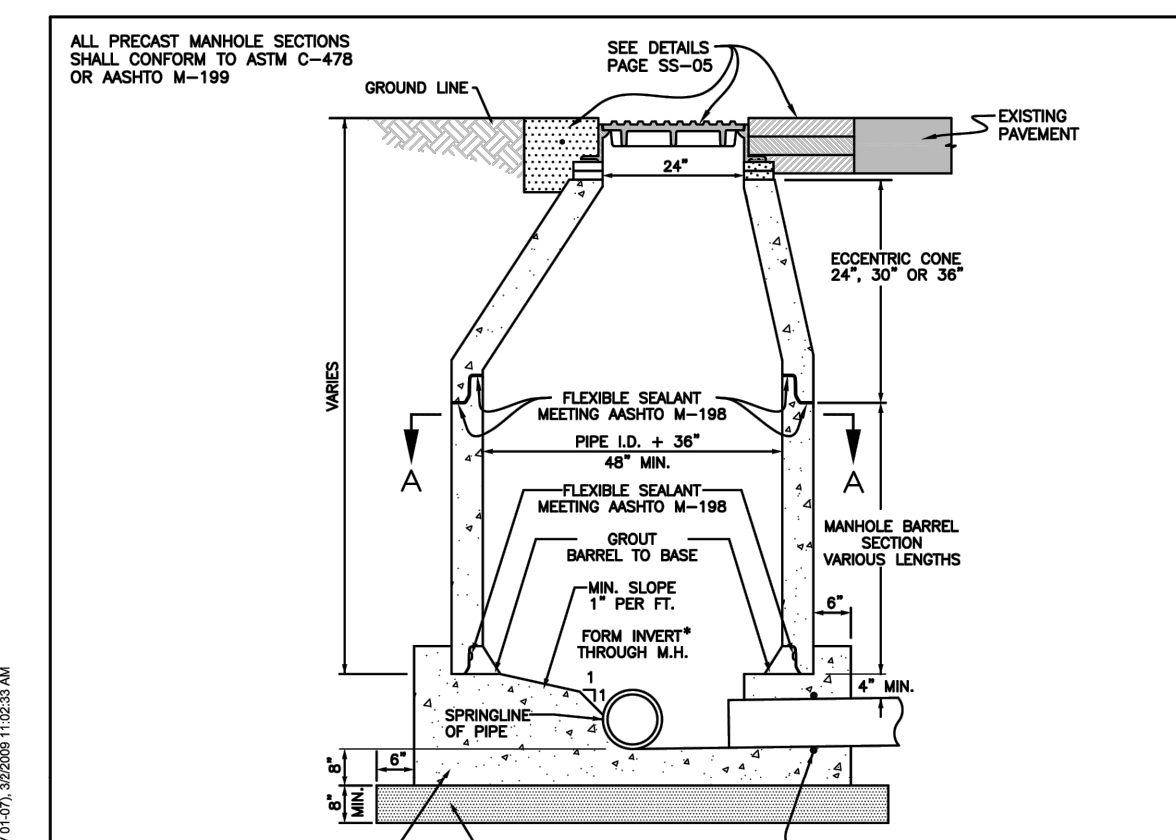


PERCENT BY WEIGHT PASSING SQUARE MESH SIEVES			
SIEVE SIZE	PIPE BEDDING, HAUNCH & INITIAL BACKFILL MATERIAL (CRUSHED ROCK, TYPE A)	GRANULAR STABILIZATION MATERIAL (SCREENED OR CRUSHED ROCK, TYPE B)	IMPORTED BACKFILL MATERIAL (USE ONLY WHERE SPECIFIED OR DIRECTED BY THE ENGINEER)
12 INCH	---	---	100
2 INCH	---	100	---
1 INCH	100	---	---
NO 4	20 MAX	15 MAX	---
NO 200	---	---	20 MAX ***

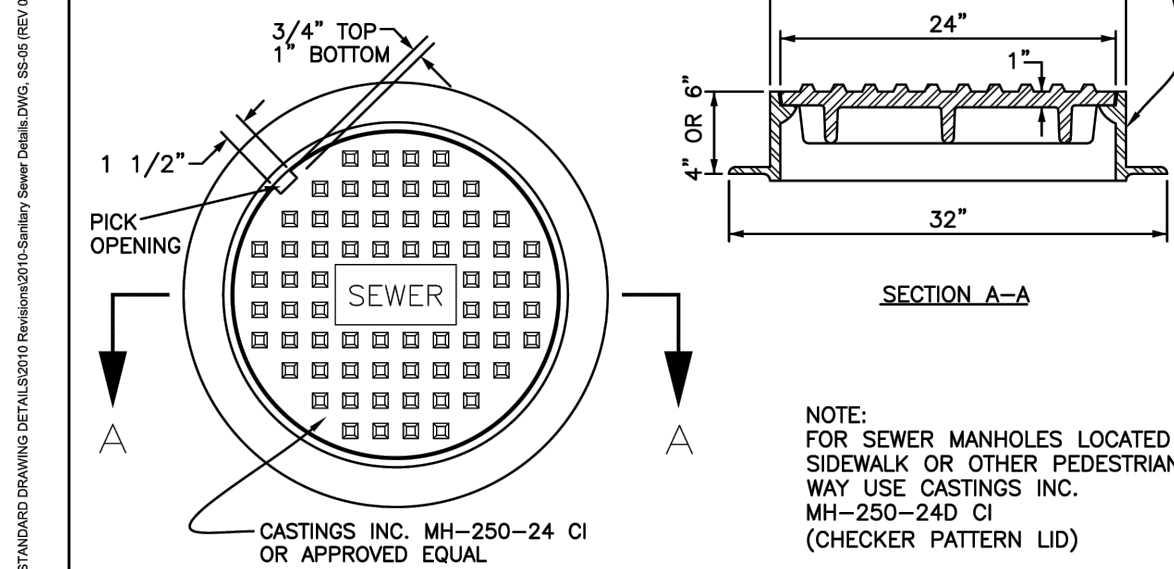
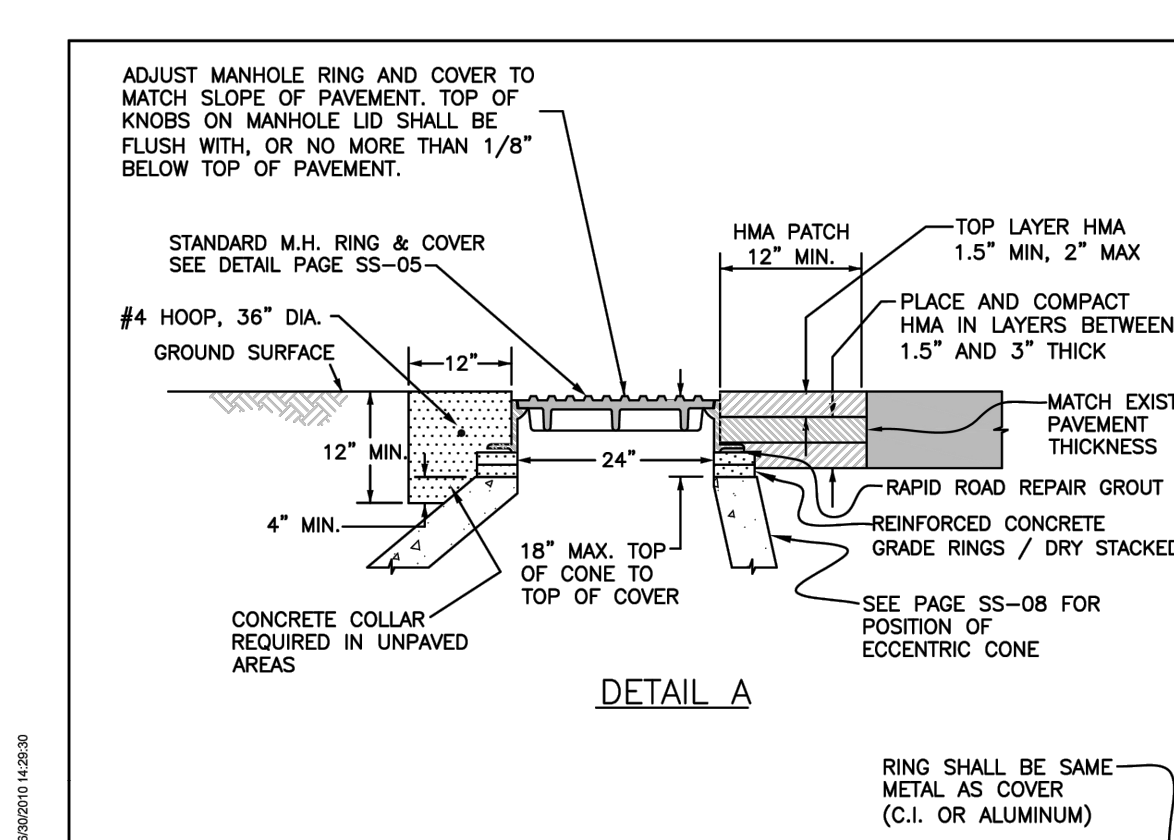
- * 24" COMPACTED BACKFILL REQUIRED OVER ALL PLASTIC PIPE PRIOR TO VEHICLE OR HEAVY EQUIPMENT LOADING.
- ** COMPACT PER AASHTO T-180 WHEN SPECIFIED, DIRECTED OR APPROVED BY THE ENGINEER.
- *** PLASTIC INDEX (PI) SHALL NOT BE MORE THAN 7.

ALL BACKFILL MATERIAL SHALL BE UNIFORMLY ADJUSTED TO WITHIN 2% OF THE OPTIMUM MOISTURE CONTENT PRIOR TO PLACEMENT AND COMPACTION.

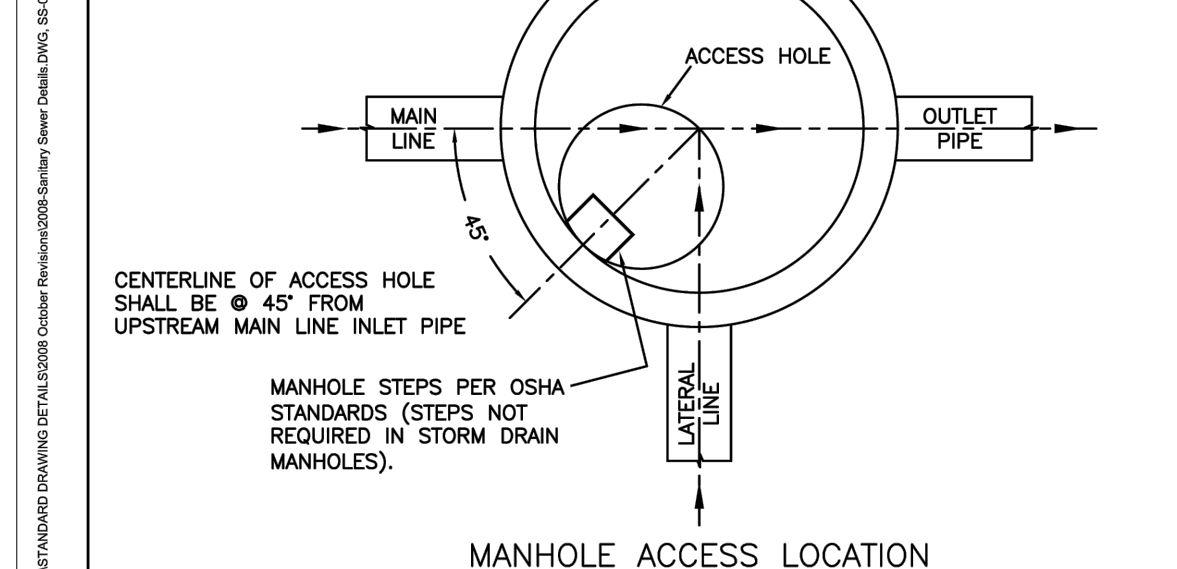
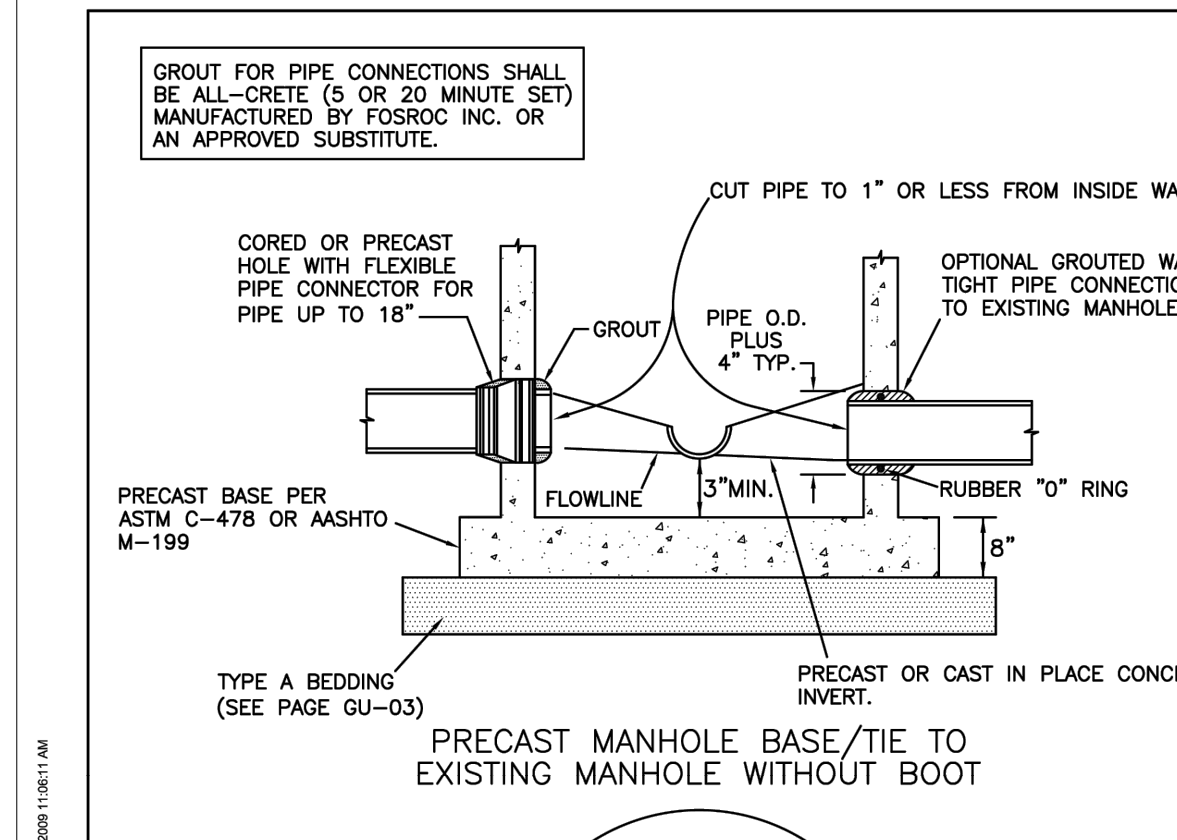
TYPICAL TRENCH DETAIL			
DEPARTMENT OF PUBLIC WORKS AND PLANNING ENGINEERING DIVISION CITY OF GRAND JUNCTION, COLORADO	GENERAL UTILITY DETAIL	APPROVED: <i>PN</i> REVISED: <i>JAY 1/22/22</i> DRAWN: <i>JAY</i>	PAGE GU-03



STANDARD MANHOLE - CAST IN PLACE BASE			
DEPARTMENT OF PUBLIC WORKS AND PLANNING ENGINEERING DIVISION CITY OF GRAND JUNCTION, COLORADO	STANDARD SANITARY SEWER DETAIL	APPROVED: <i>PN</i> REVISED: <i>TEP 7/22/21</i> DRAWN: <i>TL</i>	PAGE SS-02



STANDARD MANHOLE RING AND COVER			
DEPARTMENT OF PUBLIC WORKS AND PLANNING ENGINEERING DIVISION CITY OF GRAND JUNCTION, COLORADO	STANDARD SANITARY SEWER DETAIL	APPROVED: <i>SPS</i> REVISED: <i>JAY 7/22</i> DRAWN: <i>JAY</i>	PAGE SS-05



PRECAST MANHOLE BASE, PIPE CONNECTIONS AND ACCESS HOLE LOCATION			
DEPARTMENT OF PUBLIC WORKS AND PLANNING ENGINEERING DIVISION CITY OF GRAND JUNCTION, COLORADO	STANDARD SANITARY SEWER DETAIL	APPROVED: <i>PN</i> DATE: <i>11/1/2022</i> DRAWN: <i>JAY</i>	PAGE SS-08