

CITY OF GRAND JUNCTION

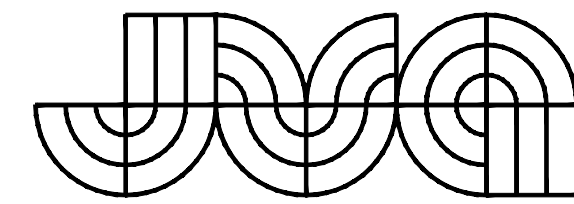
SANITARY SEWER REPLACEMENT PROJECT PHASE 1

GRAND JUNCTION, COLORADO

BID SET

CONTACTS

OWNER:	CITY OF GRAND JUNCTION 244 N. 7TH STREET GRAND JUNCTION, CO 81505	ERIC SCHOENY, P.E. (970) 256-4185 ERIC.SCHOENY@GJCITY.ORG
ENGINEER:	JVA, INC 817 COLORADO AVENUE, SUITE 301 GLENWOOD SPRINGS, CO 81601	ADAM RACETTE, P.E. (303) 565-4949 ARACETTE@JVAJVA.COM
SURVEYOR:	WHS, INC 1048 INDEPENDENT AVE, SUITE 750 GRAND JUNCTION, CO 81505	ROB WHITSON (970) 257-9101 RWHITSON@WHSMITHPC.COM

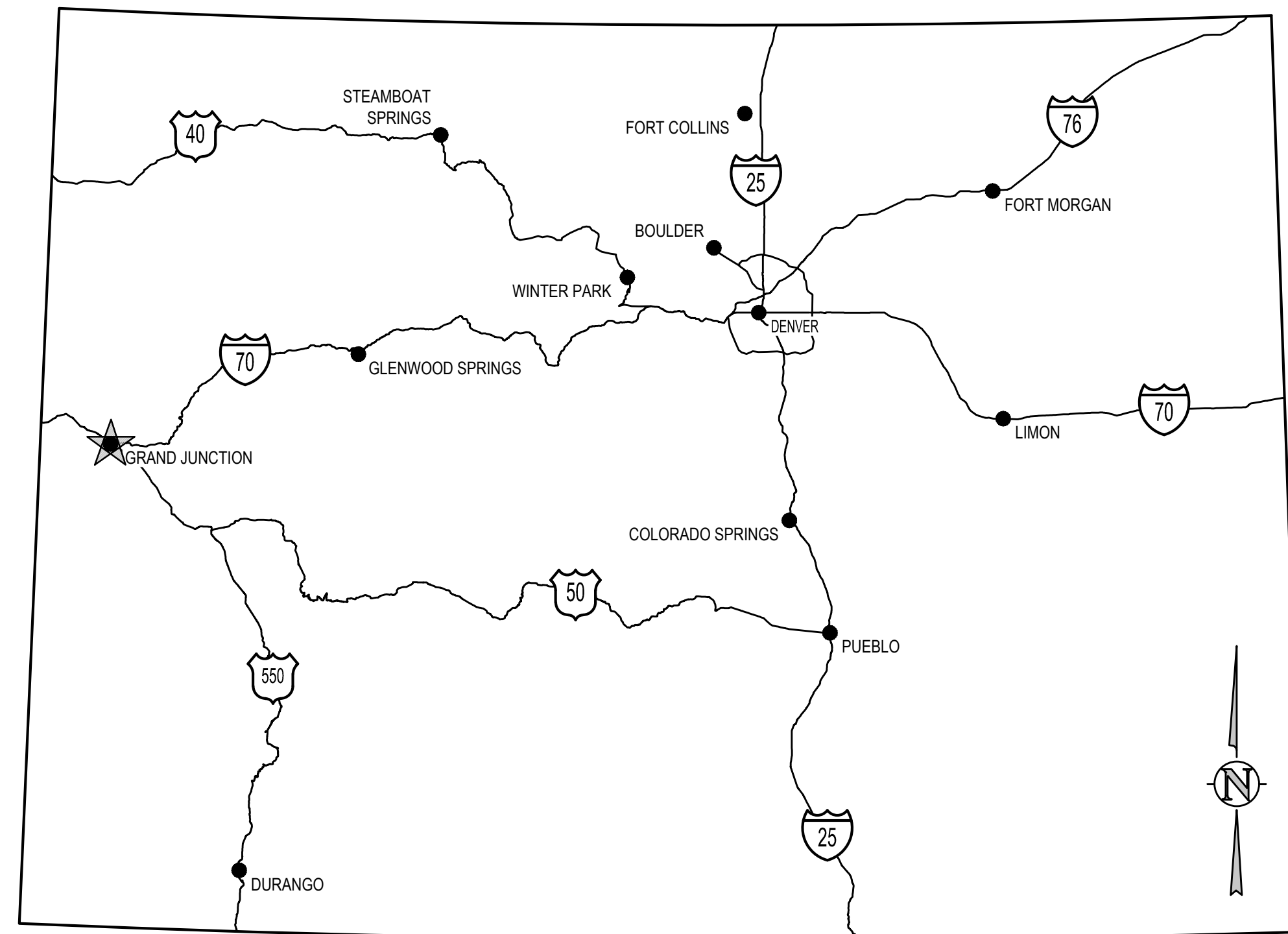


CONSULTING ENGINEERS
 JVA, Inc. 817 Colorado Ave., Suite 301
 Glenwood Springs, CO Zip 81601
 970.404.3100
 www.jvajva.com
 Boulder • Fort Collins • Winter Park
 Glenwood Springs • Denver

DRAWING INDEX

SHEET NO.	TITLE
G0.0	COVER SHEET
G0.1	LEGENDS, NOTES AND ABBREVIATIONS
G1.0	OVERALL SANITARY SEWER KEYMAP
C1.0	FORESIGHT CIRCLE SANITARY SEWER PLAN AND PROFILE
C2.0	HALL AVE SANITARY SEWER PLAN AND PROFILE
C2.1	HALL AVE SANITARY SEWER PLAN AND PROFILE
C3.0	OURAY AVE SANITARY SEWER PLAN AND PROFILE

MAY 2026

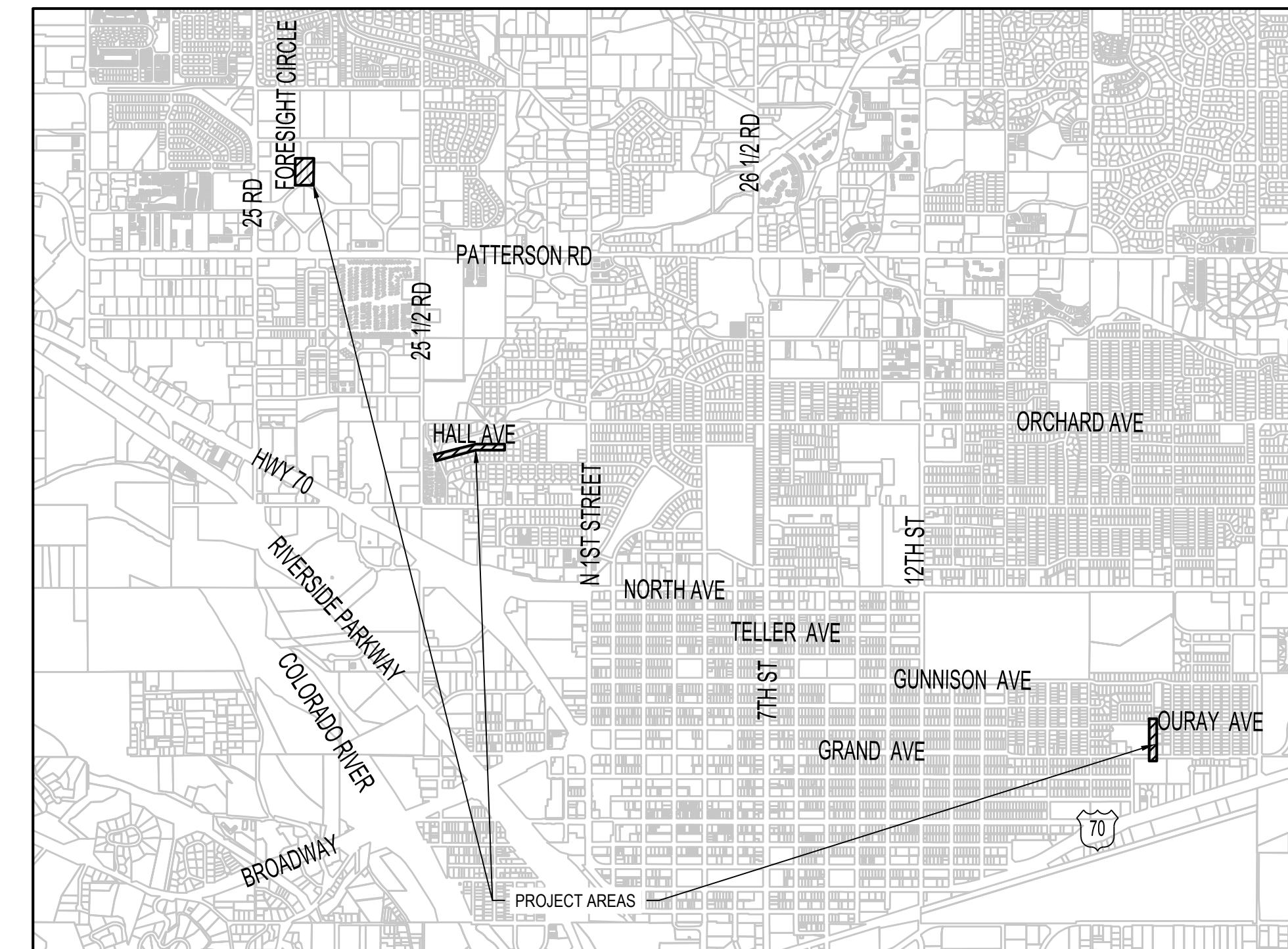
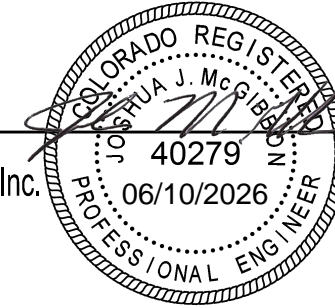


VICINITY MAP
NTS

PREPARED UNDER THE SUPERVISION OF

JOSH MCGIBBON

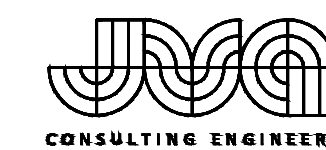
JVA, Inc.



PROJECT LOCATION MAP
NTS

K:\2026\1876181-Grand Junction 2026 Sewer Improvements\Drawings\251876181-ENR-COVER-NAK-01.dwg, 6/10/2025, 4:04 PM, ZCF

REVISION	DESCRIPTION	DATE	DRAWN BY	DATE	SCALE:
REVISION A			SAA	MAY 2026	PLAN & PROFILE
REVISION B			ZCF/AMF	MAY 2026	
REVISION C			JJM/AMR	MAY 2026	
REVISION D					
REVISION E					



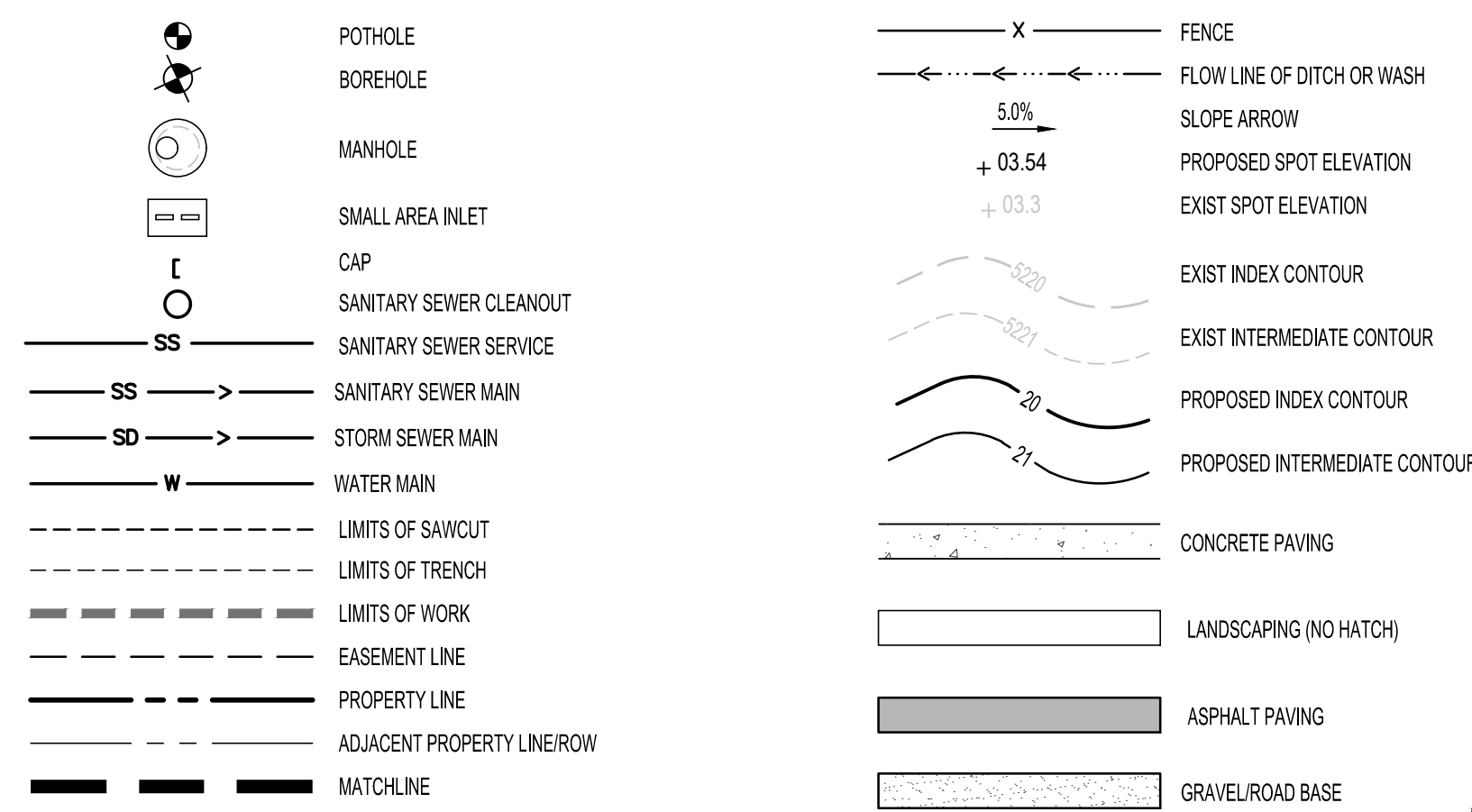
JVA, Inc.
817 Colorado Avenue, Suite 301
Glenwood Springs, CO 81601
970.404.3100
www.jvajva.com
Boulder • Fort Collins • Winter Park
Glenwood Springs • Denver

CITY OF GRAND JUNCTION
SANITARY SEWER REPLACEMENT PROJECT PHASE 1
COVER SHEET

ABBREVIATIONS

AASHTO	AMERICAN ASSOC. OF STATE HIGHWAY AND TRANSPORTATION OFFICIALS	HWY	HIGHWAY
ABAND	ABANDON	HWL	HIGH WATER LINE
AC	ASBESTOS CEMENT PIPE	HYDRANT	HYDRANT
ADDL	ADDITIONAL	INCL	INCLUDED
ADDM	ADDENDUM	ID	INSIDE DIAMETER
ADJ	ADJUSTABLE	IN	INLET
AL	ALUMINUM	INSUL	INSULATION
ALT	ALTERNATE	INV	INVERT
AMT	AMOUNT	JTS	IRRIGATION JOINTS
APPROX	APPROXIMATE	KL	KNOCKOUT
ARCH	ARCHITECTURAL	KPL	KICK PLATE
ARV	AR RELIEF VALVE	KWY	KEYWAY
ASTM	AMERICAN SOCIETY FOR TESTING AND MATERIALS	L	LEFT OR LITER
ASPH	ASPHALT	LSCAPE	LANDSCAPE(ING)
ASSY	ASSEMBLY	LF	LINEAR FOOT
ASYM	ASYMMETRICAL	LP	LOW POINT
AUTO	AUTOMATIC	LT	LIGHT
AVG	AVERAGE	LWL	LOW WATER LEVEL
AWWA	AMERICAN WATER WORKS ASSOC.	MAINT	MAINTENANCE
BC	BACK OF CURB	MAN	MANUAL
BFV	BUTTERFLY VALVE	MATL	MATERIAL
BG	FINISHED GRADE ADJACENT TO BOTTOM OF WALL	MAX	MAXIMUM
BLDG	BUILDING	ME	MATCH EXISTING
BLK	BLOCK	MECH	MECHANICAL
BM	BENCHMARK	MEP	MECHANICAL, ELECTRICAL, PLUMBING (ARCH)
BMP	BEST MANAGEMENT PRACTICE	MFR	MANUFACTURER
BS	BACKSIGHT	MH	MANHOLE
BOS	BOTTOM OF STEP	MIN	MINIMUM
BOT	BOTTOM	MISC	MISCELLANEOUS
BSMT	BASEMENT	MJ	MECHANICAL JOINT
BVCE	BEGIN VERTICAL CURVE ELEVATION	N	NORTH
BVCS	BEGIN VERTICAL CURVE STATION	NA	NOT APPLICABLE
BW	BOTTOM OF WALL	NC	NOT IN CONTRACT
CB	CATCH BASIN	NPT	NATIONAL PIPE THREAD
CCW	COUNTER CLOCKWISE	NTS	NOT TO SCALE
CDOT	COLORADO DEPARTMENT OF TRANSPORTATION	OS	OFFSET
CI	CAST IRON	OC	ON CENTER
CIPP	CURED IN PLACE PIPE	OD	OUTSIDE DIAMETER
CJ	CONSTRUCTION JOINT	OPP	OPPOSITE
CL	CENTER LINE OR CHAIN LINK	OPT	OPTIONAL
CLR	CLEAR	PC	POINT OF CURVATURE
CMP	CORRUGATED METAL PIPE	PCD	PRESSURE CLEAN OUT
CMU	CONCRETE MASONRY UNIT	PCR	POINT OF CURVE RETURN
CO	CLEANOUT	PI	POINT OF INTERSECTION
CONC	CONCRETE	PIV	POINT OF VERTICAL INTERSECTION
CONST	CONSTRUCTION	PL	PROPERTY LINE
CONT	CONTINUOUS(ATION)	PE	POLYETHYLENE
COR	CORNER	PREFAB	PREFABRICATED
CR	CONCENTRIC REDUCER	PRELIM	PRELIMINARY
CTR	CENTER	PREP	PREPARATION
CY	CUBIC YARDS	PROP	PROPOSED
DEMO	DEMOLITION	PRV	PRESSURE REDUCING VALVE OR
DET	DETAIL	PRV	PRESSURE RELIEF VALVE
DIA	DIAMETER	PSF	POUNDS PER SQUARE FOOT
DIAG	DIAGONAL	PSI	POUNDS PER SQUARE INCH
DIP	DUCTILE IRON PIPE	PT	POINT OF TANGENCY
DOM	DOMESTIC	PV	PLUG VALVE
DN	DOWN	PVC	POLYVINYL CHLORIDE OR
DNF	DID NOT FIND	PVC	POLYVINYL CHLORIDE OR
DR	DRAIN	PVMT	PAVEMENT
DWG	DRAWING	QTY	QUANTITY
DWL	DOWNHILL	R	RIGHT
E	EAST	RAD	RADIUS
EA	EACH	RCP	REINFORCED CONCRETE PIPE
ECC	ECCENTRIC	RD	ROOF DRAIN
EJ	EXPANSION JT	RE	REFERENCE
EL	ELEVATION	RECT	RECTANGULAR
ELB	ELBOW	RENF	REINFORCE (D) (ING) (MENT)
ELEC	ELECTRICAL	REQD	REQUIRED
ENGR	ENGINEER	ROW	RIGHT OF WAY
EOP	EDGE OF PAVEMENT	SAW	SANITARY SAWCUT
EQ	EQUAL	SD	STORM DRAIN
EQUIP	EQUIPMENT	SEC	SECTION
EQUIV	EQUIVALENT	SFT	SURVEY FEET
ESMT	EASEMENT	SPD	STANDARD PROCTOR DENSITY
EST	ESTIMATE	SPEC	SPECIFICATION
EVCE	END VERTICAL CURVE ELEVATION	SQ	SQUARE
EVCS	END VERTICAL CURVE STATION	SQ IN	SQUARE INCH
EW	EACH WAY	SQ FT	SQUARE FOOT
EXP JT	EXPANSION JOINT	SQ YD	SQUARE YARD
EXIST	EXISTING	SS	SANITARY SEWER
FND	FOUNDATION	SST	STAINLESS STEEL
FLD	FLARED END SECTION	STA	STATION
FFS	FINISH FLOOR	STD	STANDARD
FG	FINISH GRADE	STL	STEEL
FH	FIRE HYDRANT	STRUCT	STRUCTURAL
FL	FLOW LINE	SVC	SERVICES
FM	FORCEMAIN	SWMP	STORMWATER MANAGEMENT PLAN
FN	FENCE	SYM	SYMMETRICAL
FOC	FACE OF CONCRETE	TB	THRUST BLOCK
FS	FEET PER MINUTE	TBC	TOP BACK OF CURB
FPS	FEET PER SECOND	TBM	TEMPORARY BENCHMARK
FT	FEET	TEMP	TEMPORARY
FTG	FOOTING OR FITTING	TG	FINISHED GRADE ADJACENT TO TOP OF WALL
G	GAS	THK	THICK
GAL	GALLON	TOB	TOP OF BANK
GALV	GALVANIZED	TOC	TOP OF CONCRETE OR TOP OF CURB
GB	GRADE BREAK	TOT	TOP OF STEP
GCO	GRADE CLEANOUT	TOT	TOTAL
GP	GALVANIZED IRON PIPE	TW	TOP OF WALL OR CAP OF WALL
GND	GROUND	TYP	TYPICAL
GRD	GALLONS PER DAY	UNB	UNIFORM BUILDING CODE
GPM	GALLONS PER MINUTE	USE	UNDERGROUND ELECTRIC
GR	GRATE	UTL	UTILITY
GRTG	GRATING	UTL	UTILITY
GSP	GALVANIZED STEEL PIPE	VERT	VERTICAL
GV	GATE VALVE	VC	POINT OF VERTICAL CURVATURE
H	HIGH	VCP	VITRIFIED CLAY PIPE
HB	HOSE BIB	W	WIDE OR WIDTH
HE	HORIZONTAL ELLIPTICAL	WL	WATER LINE
HDWL	HEADWALL	W	WITH
HNDRL	HAND RAIL	W/O	WITHOUT
HORIZ	HORIZONTAL	WQCE	WATER QUALITY CONTROL ELEVATION
HP	HIGH POINT	WSE	WATER SURFACE ELEVATION
HR	HOSE	WW	WASTEWATER
HVAC	HEATING, VENTILATION, AIR CONDITIONING	X SECT	CROSS SECTION
		XFMR	ELECTRONIC TRANSFORMER
		XING	CROSSING
		YH	YARD HYDRANT

DESIGN LEGEND

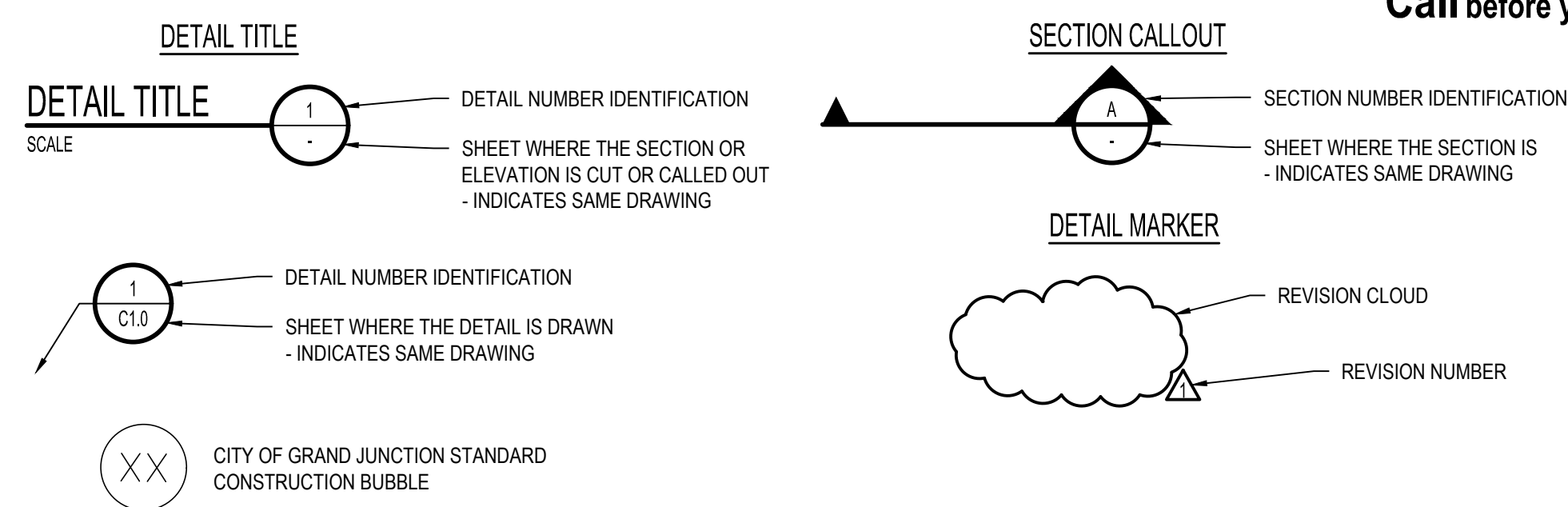


GENERAL NOTES

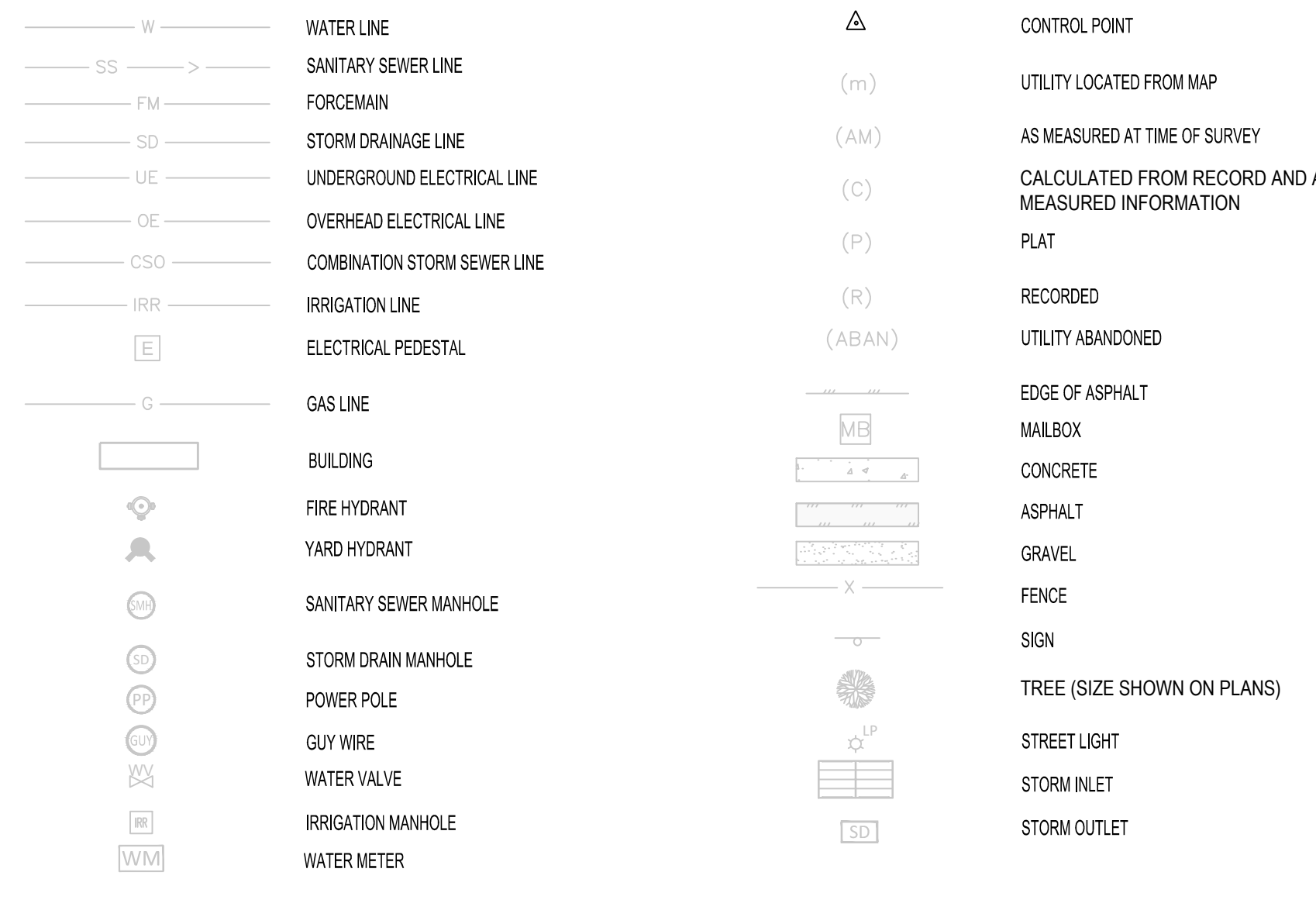
- ALL MATERIALS AND WORKMANSHIP SHALL BE IN CONFORMANCE WITH THE LATEST STANDARDS AND SPECIFICATIONS OF THE CITY OF GRAND JUNCTION, COLORADO DEPARTMENT OF TRANSPORTATION, GRAND JUNCTION FIRE PROTECTION REQUIREMENTS, AND APPLICABLE STATE AND LOCAL STANDARDS AND SPECIFICATIONS. THE CONTRACTOR SHALL HAVE IN POSSESSION AT THE JOB SITE AT ALL TIMES ONE (1) SIGNED COPY OF APPROVED PLANS, STANDARDS AND SPECIFICATIONS. CONTRACTOR SHALL CONSTRUCT AND MAINTAIN EMERGENCY ACCESS ROUTES TO THE SITE AND STRUCTURE AT ALL TIMES PER THE APPLICABLE GRAND JUNCTION FIRE PROTECTION DISTRICT REQUIREMENTS. THE CONTRACTOR SHALL OBTAIN WRITTEN APPROVAL FOR ANY VARIANCE TO THE ABOVE DOCUMENTS. NOTIFY ENGINEER OF ANY CONFLICTING STANDARDS OR SPECIFICATIONS. IN THE EVENT OF ANY CONFLICTING STANDARD OR SPECIFICATION, THE MORE STRINGENT OR HIGHER QUALITY STANDARD, DETAIL OR SPECIFICATION SHALL APPLY.
- THE CONTRACTOR SHALL OBTAIN, AT THEIR OWN EXPENSE, ALL APPLICABLE CODES, LICENSES, STANDARD SPECIFICATIONS, PERMITS, BONDS, ETC., WHICH ARE NECESSARY TO PERFORM THE PROPOSED WORK, INCLUDING, BUT NOT LIMITED TO A LOCAL AND STATE GROUNDWATER DISCHARGE AND COLORADO DEPARTMENT OF HEALTH AND ENVIRONMENT (CDPHE) STORMWATER DISCHARGE PERMIT ASSOCIATED WITH CONSTRUCTION ACTIVITY.
- THE CONTRACTOR SHALL BE RESPONSIBLE FOR NOTIFYING THE REQUIRED PARTY OWNER AND ENGINEER AT LEAST 48 HOURS PRIOR TO START OF ANY CONSTRUCTION, PRIOR TO BACKFILLING, AND AS REQUIRED BY JURISDICTIONAL AUTHORITY AND/OR PROJECT SPECIFICATIONS. THE CONTRACTOR SHALL CONTINUE WITH NOTIFICATIONS THROUGHOUT THE PROJECT AS REQUIRED BY THE STANDARDS AND SPECIFICATIONS.
- THE LOCATIONS OF EXISTING UTILITIES ARE SHOWN IN THE APPROXIMATE LOCATION BASED ON INFORMATION BY OTHERS. NOT ALL UTILITIES MAY BE SHOWN. THE CONTRACTOR SHALL DETERMINE THE EXACT SIZE, LOCATION AND TYPE OF ALL EXISTING UTILITIES WHETHER SHOWN OR NOT BEFORE COMMENCING WORK. THE ENGINEER AND/OR OWNER ASSUMES NO RESPONSIBILITY FOR THE ACCURACY OR COMPLETENESS SHOWN ON PLANS. THE CONTRACTOR SHALL BE FULLY AND SOLELY RESPONSIBLE FOR ANY AND ALL DAMAGES AND COSTS WHICH MIGHT OCCUR BY THE CONTRACTOR'S FAILURE TO EXACTLY LOCATE AND PRESERVE ANY AND ALL UTILITIES. THE CONTRACTOR SHALL NOTIFY ALL PUBLIC AND PRIVATE UTILITY COMPANIES AND DETERMINE THE LOCATION OF ALL EXISTING UTILITIES PRIOR TO PROCEEDING WITH GRADING AND CONSTRUCTION. ALL WORK PERFORMED IN THE AREA OF UTILITIES SHALL BE PERFORMED AND INSPECTED ACCORDING TO THE REQUIREMENTS OF THE UTILITY OWNER. LIKEWISE, THE CONTRACTOR SHALL BE RESPONSIBLE FOR LOCATING AND MAPPING ANY EXISTING UTILITY (INCLUDING DEPTH) WHICH MAY CONFLICT WITH THE PROPOSED CONSTRUCTION, AND FOR RELOCATING ENCOUNTERED UTILITIES AS DIRECTED BY THE ENGINEER. CONTRACTOR SHALL CONTACT AND RECEIVE APPROVAL FROM UTILITY OWNER AND ENGINEER BEFORE RELOCATING ANY ENCOUNTERED UTILITIES. CONTRACTOR RESPONSIBLE FOR SERVICE CONNECTIONS, AND RELOCATING AND RECONNECTING AFFECTED UTILITIES AS COORDINATED WITH UTILITY OWNER AND/OR ENGINEER, INCLUDING NON-MUNICIPAL UTILITIES (TELEPHONE, GAS, CABLE, ETC., WHICH SHALL BE COORDINATED WITH THE UTILITY OWNER). THE CONTRACTOR SHALL IMMEDIATELY CONTACT ENGINEER UPON DISCOVERY OF A UTILITY DISCREPANCY OR CONFLICT. AT LEAST 48 HOURS PRIOR TO CONSTRUCTION, THE CONTRACTOR SHALL NOTIFY THE UTILITY NOTIFICATION CENTER OF COLORADO (1-800-922-1987, WWW.UNCCO.ORG). SEE SURVEY UTILITY LOCATION INFORMATION BELOW.
- THE CONTRACTOR SHALL BE SOLELY AND COMPLETELY RESPONSIBLE FOR CONDITIONS AT AND ADJACENT TO THE JOB SITE, INCLUDING SAFETY OF ALL PERSONS AND PROPERTY DURING THE PERFORMANCE OF THE WORK. THE CONTRACTOR SHALL PREPARE A TRAFFIC CONTROL PLAN FOR OWNER AND/OR CITY APPROVAL AND PROVIDE ALL LIGHTS, SIGNS, BARRICADES, FENCING, FLAGMEN OR OTHER DEVICES NECESSARY TO PROVIDE FOR PUBLIC SAFETY. THIS REQUIREMENT SHALL APPLY CONTINUOUSLY AND NOT BE LIMITED TO NORMAL WORKING HOURS. THE CONTRACTOR AGREES TO COMPLY WITH THE PROVISIONS OF THE TRAFFIC CONTROL PLAN AND THE LATEST EDITION OF THE "MANUAL ON UNIFORM TRAFFIC CONTROL DEVICES," PART VI, FOR CONSTRUCTION SIGNAGE AND TRAFFIC CONTROL. ALL TEMPORARY AND PERMANENT TRAFFIC SIGNS SHALL COMPLY TO THE MANUAL ON UNIFORM TRAFFIC CONTROL DEVICES (MUTCD) WITH REGARD TO SIGN SHAPE, COLOR, SIZE, LETTERING, ETC. UNLESS OTHERWISE SPECIFIED. IF APPLICABLE, PART NUMBERS ON SIGNAGE DETAILS REFER TO MUTCD SIGN NUMBERS.
- THE CONTRACTOR SHALL BE RESPONSIBLE FOR REMOVING ANY GROUNDWATER ENCOUNTERED DURING THE CONSTRUCTION OF ANY PORTION OF THIS PROJECT. GROUNDWATER SHALL BE PUMPED, PIPED, REMOVED AND DISPOSED OF IN A MANNER WHICH DOES NOT CAUSE FLOODING OF EXISTING STREETS NOR EROSION ON ADJUTING PROPERTIES IN ORDER TO CONSTRUCT THE IMPROVEMENTS SHOWN ON THESE PLANS. GROUNDWATER TO BE PUMPED SHALL BE TESTED, PERMITTED, AND PUMPED PER THE STATE OF COLORADO AND LOCAL GROUNDWATER DISCHARGING PERMIT REQUIREMENTS.
- RIM AND GRATE ELEVATIONS SHOWN ON PLANS ARE APPROXIMATE ONLY AND ARE NOT TO BE TAKEN AS FINAL ELEVATIONS. THE CONTRACTOR SHALL ADJUST RIMS AND OTHER IMPROVEMENTS TO MATCH FINAL PAVEMENT AND FINISHED GRADE ELEVATIONS. ALL MANHOLES SHALL BE FINAL ADJUSTED AFTER PAVING SUCH THAT THE RIM IS 1/4" TO 1/2" BELOW FINISHED ASPHALT. MANHOLES IN UNPAVED AREAS SHALL BE SET SO THAT THE RIM IS 6" ABOVE FINISHED GRADE.
- THE EXISTING AND PROPOSED ELEVATIONS OF FLATWORK, SIDEWALKS, CURBS, THRESHOLDS, PAVING, ETC. AS SHOWN HEREON ARE BASED ON EXTRAPOLATION OF FIELD SURVEY DATA, EXISTING CONDITIONS, AND DATA PROVIDED BY OTHERS. AT CRITICAL AREAS INCLUDING BUT NOT LIMITED TO SANITARY SEWER TIE IN LOCATIONS, SANITARY SEWER SERVICE CONNECTIONS, AND CRITICAL STORM INFRASTRUCTURE CONTRACTOR SHALL HAVE FORMWORK INSPECTED AND APPROVED BY OWNER, OWNER'S REPRESENTATIVE, OR ENGINEER PRIOR TO PLACING CONCRETE. MINOR ADJUSTMENTS, AS APPROVED, TO PROPOSED GRADES, INVERTS, ETC. MAY BE REQUIRED TO PREVENT PONDING OR SLOPE NOT IN CONFORMANCE WITH MUNICIPAL STANDARDS. ALL FLATWORK MUST PREVENT PONDING AND PROVIDE POSITIVE DRAINAGE AWAY FROM EXISTING AND PROPOSED BUILDINGS, WALLS, ROOF DRAIN OUTFALLS, ACROSS DRIVES AND WALKS, ETC., TOWARDS THE PROPOSED INTENDED DRAINAGE FEATURES AND CONVEYANCES.
- FINAL LIMITS OF REQUIRED ASPHALT SAWCUTTING AND PATCHING MAY VARY FROM LIMITS SHOWN ON PLANS. CONTRACTOR TO PROVIDE SAWCUT AND PATCH WORK TO ACHIEVE POSITIVE DRAINAGE AND A SMOOTH TRANSITION TO EXISTING ASPHALT WITHIN SLOPES ACCEPTABLE TO THE ENGINEER AND WITHIN MUNICIPAL STANDARDS. CONTRACTOR SHALL PROVIDE ADDITIONAL SAWCUTTING AND PATCHING AT UTILITY WORK, CONNECTION POINTS TO EXISTING PAVEMENT AND FEATURES, ETC. THAT MAY NOT BE DELINEATED ON PLANS.
- ANY EXISTING MONITORING WELLS, CLEANOUTS, VALVE BOXES, ETC. TO BE PROTECTED AND TO REMAIN IN SERVICE. IF FEATURES EXIST, EXTEND OR LOWER TO FINAL SURFACE WITH LIKE KIND CAP WITH STANDARD CAST ACCESS LID WITH SAME MARKINGS. IN LANDSCAPED AREAS PROVIDE A CONCRETE COLLAR (18"x18"x6" THICK) AT ALL EXISTING AND PROPOSED MONITORING WELLS, CLEANOUTS, VALVE BOXES, ETC.
- OWNER TO APPROVE ALL PRIVATE CONCRETE FINISHING, JOINT PATTERNS AND COLORING REQUIREMENTS PRIOR TO CONSTRUCTION. SUBMIT JOINT LAYOUT PLAN TO OWNER FOR APPROVAL PRIOR TO CONSTRUCTION.
- PIPE LENGTHS AND HORIZONTAL CONTROL POINTS SHOWN ARE FROM CENTER OF STRUCTURES, END OF FLARED END SECTIONS, ETC. SEE STRUCTURE DETAILS FOR EXACT HORIZONTAL CONTROL LOCATION. CONTRACTOR IS RESPONSIBLE FOR ADJUSTING ACTUAL PIPE LENGTHS TO ACCOUNT FOR STRUCTURES AND LENGTH OF FLARED END SECTIONS.
- ALL SURPLUS MATERIALS, TOOLS, AND TEMPORARY STRUCTURES, FURNISHED BY THE CONTRACTOR, SHALL BE REMOVED FROM THE PROJECT SITE BY THE CONTRACTOR. ALL DEBRIS AND RUBBISH CAUSED BY THE OPERATIONS OF THE CONTRACTOR SHALL BE REMOVED, AND THE AREA OCCUPIED DURING CONSTRUCTION ACTIVITIES SHALL BE RESTORED TO ITS ORIGINAL CONDITION, WITHIN 48 HOURS OF PROJECT COMPLETION, UNLESS OTHERWISE DIRECTED BY THE MUNICIPALITY OR OWNER'S REPRESENTATIVE.
- THE CONTRACTOR IS REQUIRED TO PROVIDE AND MAINTAIN EROSION AND SEDIMENT CONTROL MEASURES IN ACCORDANCE WITH THE LOCAL JURISDICTION, THE STATE OF COLORADO MILE HIGH FLOOD DISTRICT URBAN STORM DRAINAGE CRITERIA MANUAL VOLUME 3, THE STANDARD PLANS OF THE COLORADO DEPARTMENT OF TRANSPORTATION, AND THE APPROVED EROSION CONTROL PLAN. JURISDICTIONAL AUTHORITY MAY REQUIRE THE CONTRACTOR TO PROVIDE ADDITIONAL EROSION CONTROL MEASURES AT THE CONTRACTOR'S EXPENSE DUE TO UNFORESEEN EROSION PROBLEMS OR IF THE PLANS DO NOT FUNCTION AS INTENDED. THE CONTRACTOR IS RESPONSIBLE FOR PROHIBITING SILT AND DEBRIS LADEEN RUNOFF FROM LEAVING THE SITE, AND FOR KEEPING ALL PUBLIC AREAS FREE OF MUD AND DEBRIS. THE CONTRACTOR IS RESPONSIBLE FOR RE-ESTABLISHING FINAL GRADES AND FOR REMOVING ACCUMULATED SEDIMENTATION FROM ALL AREAS INCLUDING SWALES AND DETENTION WATER QUALITY AREAS. CONTRACTOR SHALL REMOVE TEMPORARY EROSION CONTROL MEASURES AND REPAIR AREAS AS REQUIRED AFTER VEGETATION IS ESTABLISHED AND ACCEPTED BY OWNER AND MUNICIPALITY.
- ADA COMPLIANCE: THE CROSS-SLOPE OF ALL WALKS MUST BE LESS THAN 1:48 (2.0%) PERPENDICULAR TO DIRECTION OF TRAVEL. RUNNING SLOPE OF ACCESSIBLE WALKS MUST BE NOT STEEPER THAN 1:20 (5.0%) IN DIRECTION OF TRAVEL. MAXIMUM GRADE OF ACCESSIBLE CURB RAMPS AND RAMPS IS 1:12 (8.3%). CURB RAMPS SHALL PROVIDE A LANDING AT THE TOP AND RAMP RUNS PROVIDE LANDINGS AT THE BOTTOM AND TOP OF EACH RAMP RUN AT A SLOPE NOT TO EXCEED 1:48. RAMP RUNS EXCEEDING SIX INCHES SHALL INCLUDE HANDRAILS. ACCESSIBLE PARKING SPACES AND ACCESS AISLES SHALL NOT EXCEED 1:48 IN ALL DIRECTIONS. CONTRACTOR SHALL NOTIFY ENGINEER PRIOR TO PLACEMENT OF FLATWORK OF SITE CONDITIONS OR DISCREPANCIES WHICH PREVENT TYPICAL REQUIRED GRADES FROM BEING ACHIEVED. ALL RAMPS, STAIRS, EDGE PROTECTION, AND RAILINGS SHALL BE CONSTRUCTED IN ACCORDANCE WITH CURRENT ADA STANDARDS. ACCESSIBLE CURB RAMPS SHALL CONFORM TO THE CDOT M-STANDARDS (SEE DETAIL M-608-1, ETC). ACCESSIBLE FEATURE WITHIN THE PUBLIC RIGHTS-OF-WAY SHALL BE CONSTRUCTED TO CONFORM TO THE LOCAL AUTHORITY HAVING JURISDICTION REQUIREMENTS.
- PROTECT ALL TREES AND VEGETATION. PLACE CONSTRUCTION FENCING AT DRIP LINE OF TREES AND PLANTS NEAR THE WORK ZONE. DEEP WATER TREES WEEKLY. HAND EXCAVATION REQUIRED AT ROOT ZONES WHERE PROPOSED PAVING OR UTILITY WORK IS WITHIN DRIPLINE OF TREES.
- LOCATIONS OF CLEANOUTS, LIGHTS, SIGNAGE, JUNCTION BOXES, AND OTHER SIGNIFICANT SITE FEATURES TO BE STAKED FOR ENGINEER AND OR OWNER APPROVAL PRIOR TO WORK. CLEANOUTS, JUNCTION BOXES, AND ADJACENT GRADES TO BE RAISED ONE-HALF INCH AT ASPHALT/CONCRETE (OR 1" AT LANDSCAPING) TO PROVIDE POSITIVE DRAINAGE AWAY FROM FEATURES.
- SURVEY INFORMATION:
 - BENCHMARK INFORMATION: TOPOGRAPHIC INFORMATION WAS PROVIDED BY WILLIAM H. SMITH AND ASSOCIATES, INC. SEE GRAND JUNCTION TOPOGRAPHIC EXHIBITS DATED 08/19/2025. PROJECT BENCHMARK ELEVATION: 4550.00 FT AT MESA COUNTY CONTROL POINT SN13. THE VERTICAL DATUM IS NAVD88 WITH GEOID MODEL 12A TO COMPUTE ORTHOMETRIC ELEVATION AND THE HORIZONTAL DATUM IS THE MESA COUNTY LOCAL COORDINATE SYSTEM (MCLCS) IN THE GRAND VALLEY AREA (GVA) ZONE PER SURVEY. COORDINATE AND HORIZONTAL DATA SHOWN IN SURVEY AND REPORT ANY IRREGULARITIES OR DISCREPANCIES TO ENGINEER PRIOR TO CONSTRUCTION.
 - BASIS OF BEARINGS: COORDINATES SHOWN ARE REFERENCED FROM THE MESA COUNTY LOCAL COORDINATE SYSTEM (MCLCS). IN THE GVA ZONE (MCGVA) PUBLISHED AS THE SURVEY INFORMATION MANAGEMENT SYSTEM (SIMS) BY MESA COUNTY PUBLIC WORKS.
 - HORIZONTAL CONTROL INFORMATION: HORIZONTAL CONTROL COORDINATES ARE BASED ON THE REFERENCED SURVEY AND ARE PROVIDED BY THE FOLLOWING POINTS AS SHOWN ON THE PLANS:

POINT	NORTHING	EASTING	POINT	NORTHING	EASTING
SM13	N32276.19	E87382.80	ELEV4550.00	P113	N25684.13
OURAY 1	N37381.99	E97835.80	ELEV4606.69	OURAY 2	N37320.40
TELLER 1	N38715.31	E94142.19	ELEV4610.81	TELLER 2	N38770.83
FORESIGHT 1	N45935.34	E85027.33	ELEV4577.20	FORESIGHT 2	N45978.76
HALL 1	N41690.36	E87497.94	ELEV4584.14	HALL 2	N41596.85
 - HORIZONTAL CONTROL INFORMATION: HORIZONTAL CONTROL COORDINATES ARE BASED ON THE REFERENCED SURVEY. THE HORIZONTAL DATUM IS REFERENCED FROM THE MESA COUNTY LOCAL COORDINATE SYSTEM (MCLCS) IN THE GVA ZONE (MCGVA) PUBLISHED AS THE SURVEY INFORMATION MANAGEMENT SYSTEM (SIMS) BY MESA COUNTY PUBLIC WORKS. THE SAID GVA ZONE HAS THE FOLLOWING PUBLISHED PARAMETERS:

MESA COUNTY CONTROL POINTS		CONTROL POINT: SN13 - PRECISION A-1PPM		CONTROL POINT: P113 - PRECISION B-5PPM	
NORTHING:	50,000 SFT	NORTHING:	39,278.18 SFT (MCGVA)	NORTHING:	25,684.134 SFT (MCGVA)
EASTING:	100,000 SFT	EASTING:	87,382.602 SFT (MCGVA)	EASTING:	97,262.198 SFT (MCGVA)
PROJECT/SCALE FACTOR HEIGHT:	4,644 FT (NAVD 88)	NAVD88, G12A ELEVATION:	4550.004 SFT	NAVD 88, G12A ELEVATION:	4644.910 SFT
LATITUDE (DECIMALS):	39°06'22.72756"N	LATITUDE (DECIMAL):	39°04'36.74690" N	LATITUDE:	39°02'22.44231" N
LONGITUDE (DECIMALS):	108°32'01.43463" W	LONGITUDE (DECIMAL):	108°32'36.12657" W	LONGITUDE:	108°32'36.12657" W
SCALE FACTOR:	1.000218181798	ELLIPSOID HEIGHT:	1369.900 METERS	ELLIPSOID HEIGHT:	1398.919 METERS
 - COMMENT: 1/2" IRON ROD IN MONUMENT WELL
COMMENT: 1/2" IRON ROD IN MONUMENT WELL
- SURVEY UTILITY LOCATION INFORMATION PER THE SURVEYOR: SUBSURFACE UTILITIES INCLUDING SANITARY SEWER MAINS, SANITARY SEWER TAPS, WATER MAINS, WATER SERVICES, GAS LINES, AND ELECTRIC LINES ARE SHOWN IN APPROXIMATE HORIZONTAL AND VERTICAL LOCATIONS CONSISTENT WITH ASCE 38-02 QUALITY LEVEL "B" (INFORMATION OBTAINED BY THE APPLICATION OF APPROPRIATE SURFACE GEOPHYSICAL METHODS TO DETERMINE THE EXISTENCE AND HORIZONTAL POSITION OF VIRTUALLY ALL UTILITIES WITHIN THE PROJECT LIMITS. THE INFORMATION OBTAINED IN THIS MANNER IS SURVEYED TO PROJECT CONTROL.) AND UTILITIES INCLUDING STORM DRAINAGE, ARE QUALITY LEVEL "C" (INFORMATION OBTAINED BY SURVEYING AND PLOTTING VISIBLE ABOVE-GROUND UTILITY FEATURES AND BY USING PROFESSIONAL JUDGMENT IN CORRELATING THIS INFORMATION TO QUALITY LEVEL "B" INFORMATION DERIVED FROM EXISTING RECORDS OR ORAL RECOLLECTIONS), AND BASED ON FIELD MEASUREMENTS PROVIDED BY THE OWNER AND THE CONTRACTOR, IRRIGATION LINES, SANITARY SEWER SERVICES, AND MAPPED WATER LINES SHOWN IN THE PLANS ARE QUALITY LEVEL "D". SUBSURFACE UTILITIES ARE NOT DEPICTED TO THE EXTENT SET FORTH IN ASCE 38-02 QUALITY LEVEL "A" (INFORMATION OBTAINED THROUGH THE NONDESTRUCTIVE EXPOSURE OF UNDERGROUND UTILITIES, AND ALSO PROVIDES THE TYPE, SIZE, CONDITION, MATERIAL AND OTHER CHARACTERISTICS OF UNDERGROUND FEATURES.), TO THE EXTENT DEEMED NECESSARY FOR THE PROTECTION OF PERSONS AND PROPERTY, POULING OR OTHER PRECISE MAPPING MAY BE COMPLETED TO CONFIRM THE EXACT LOCATION OF ANY SUBSURFACE UTILITIES. NOTIFY OWNER AND ENGINEER WITH ALL UTILITY INFORMATION PRIOR TO CONSTRUCTION. VISIT [HTTPS://WWW.FHWA.DOT.GOV/PROGRAMADMIN/SINDEX.CFM](https://www.fhwa.dot.gov/programadmin/sindex.cfm) FOR MORE INFORMATION.
- THE CONTRACTOR AT THE CONTRACTOR'S EXPENSE SHALL FURNISH THE OWNER AND ENGINEER OF RECORD A COMPLETE SET OF CONSTRUCTION RECORD DRAWINGS ("AS-BUILTS") FOR THE CONSTRUCTED IMPROVEMENTS. THE AS-BUILT SET SHALL SHOW SUFFICIENT DIMENSION TIES TO PERMANENT SURFACE FEATURES OR NORTHING/EASTING POINTS FOR ALL BURRED FACILITIES TO ALLOW FOR FUTURE LOCATING. THE AS-BUILT SET SHALL SHOW AS-BUILT CONTOURS AND ELEVATIONS OF ASPHALT AND CONCRETE FLATWORK, FLOWLINES, GRADE BREAKS, STAIRS, CROSS-SLOPES, HIGH AND LOW POINTS, AND ADDITIONAL ELEVATIONS TO DEMONSTRATE IMPROVEMENTS WERE CONSTRUCTED PER PLANS. THE AS-BUILT SET SHALL SHOW ELEVATIONS OF ALL DETENTION WATER QUALITY FACILITIES, INCLUDING BUT NOT LIMITED TO BERMS, SPILLWAYS, BASIN BOTTOM, PIPE INVERTS, AND CONTROL STRUCTURE FEATURES (AS SURVEYED AND STAMPED BY A CERTIFIED P.L.S.). THE AS-BUILT SET SHALL ALSO INCLUDE ELEVATIONS OF MANHOLES, PIPES, INLETS, GRATES, AND SIZES OF ALL UTILITIES. THE AS-BUILT SET SHALL SHOW ANY AND ALL VARIATIONS FROM THE APPROVED PLAN. ENGINEER WILL PRODUCE FINAL RECORD DRAWINGS.



SURVEY LEGEND



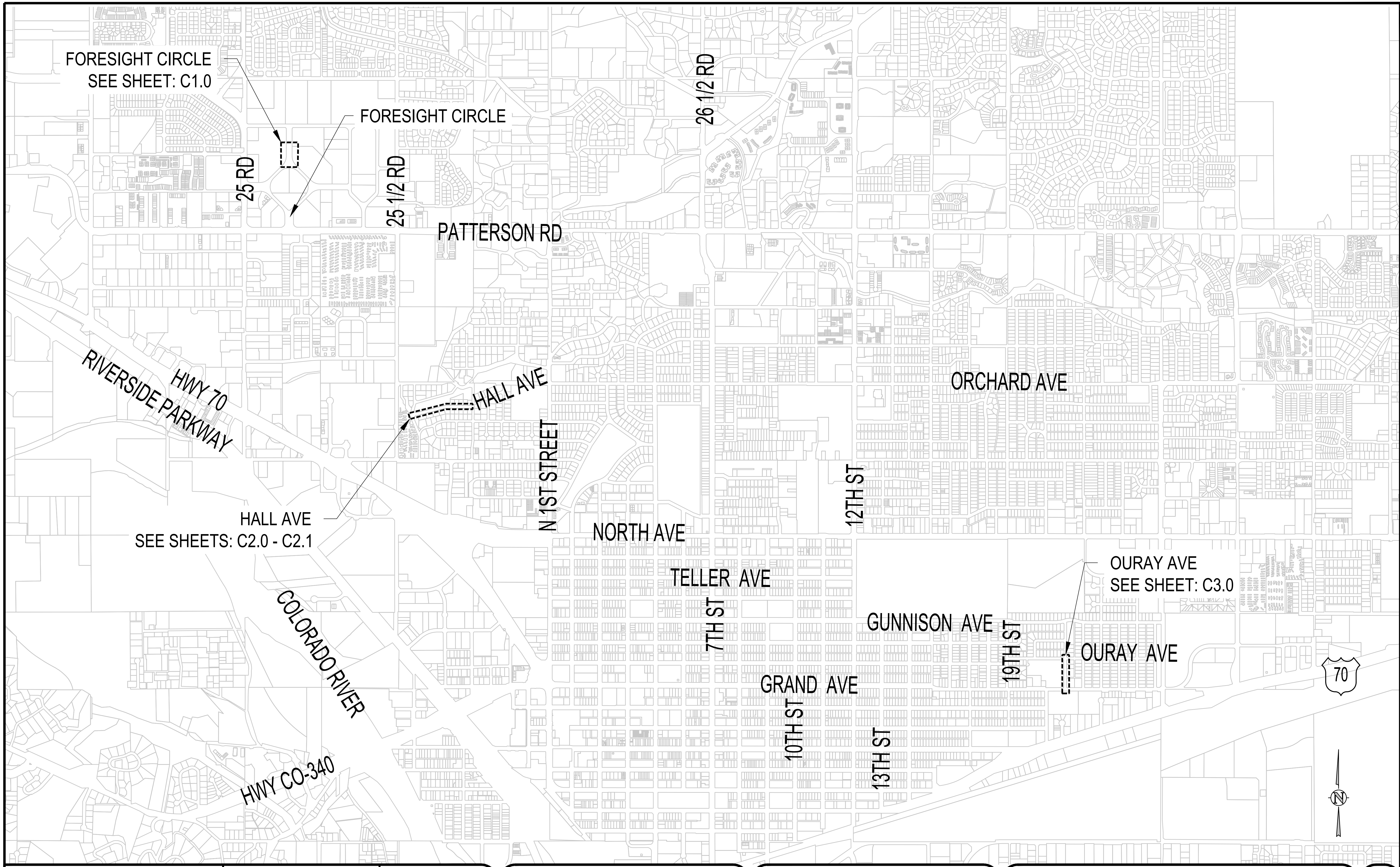
NOTE: SHADED ITEMS REPRESENT EXIST FEATURES

REVISION	DESCRIPTION	DATE	DRAWN BY	DATE	SCALE:
1			SAA	MAY 2026	PLAN & PROFILE
2			ZCF/AMF	MAY 2026	
3			JJM/AMR	MAY 2026	
4					



CITY OF GRAND JUNCTION
SANITARY SEWER REPLACEMENT PROJECT PHASE 1
LEGENDS, NOTES AND ABBREVIATIONS

GO.1



FORESIGHT CIRCLE
SEE SHEET: C1.0

FORESIGHT CIRCLE

25 RD

25 1/2 RD

26 1/2 RD

PATTERSON RD

RIVERSIDE PARKWAY
HWY 70

HALL AVE

ORCHARD AVE

HALL AVE
SEE SHEETS: C2.0 - C2.1

N1ST STREET

NORTH AVE

12TH ST

TELLER AVE

OURAY AVE
SEE SHEET: C3.0

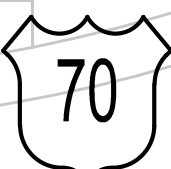
COLORADO RIVER

7TH ST

GUNNISON AVE

19TH ST

OURAY AVE

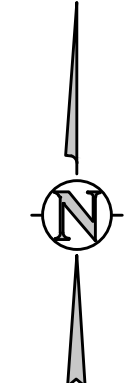


GRAND AVE

HWY CO-340

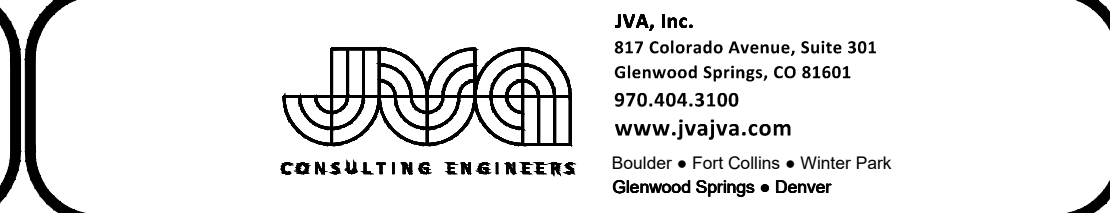
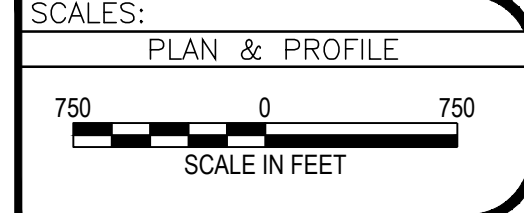
10TH ST

13TH ST



REVISION	DESCRIPTION	DATE
REVISION		
REVISION		
REVISION		
REVISION		

DRAWN BY	SAA	DATE	MAY 2026
DESIGNED BY	ZCE/AMF	DATE	MAY 2026
CHECKED BY	JJM/AMR	DATE	MAY 2026
APPROVED BY		DATE	

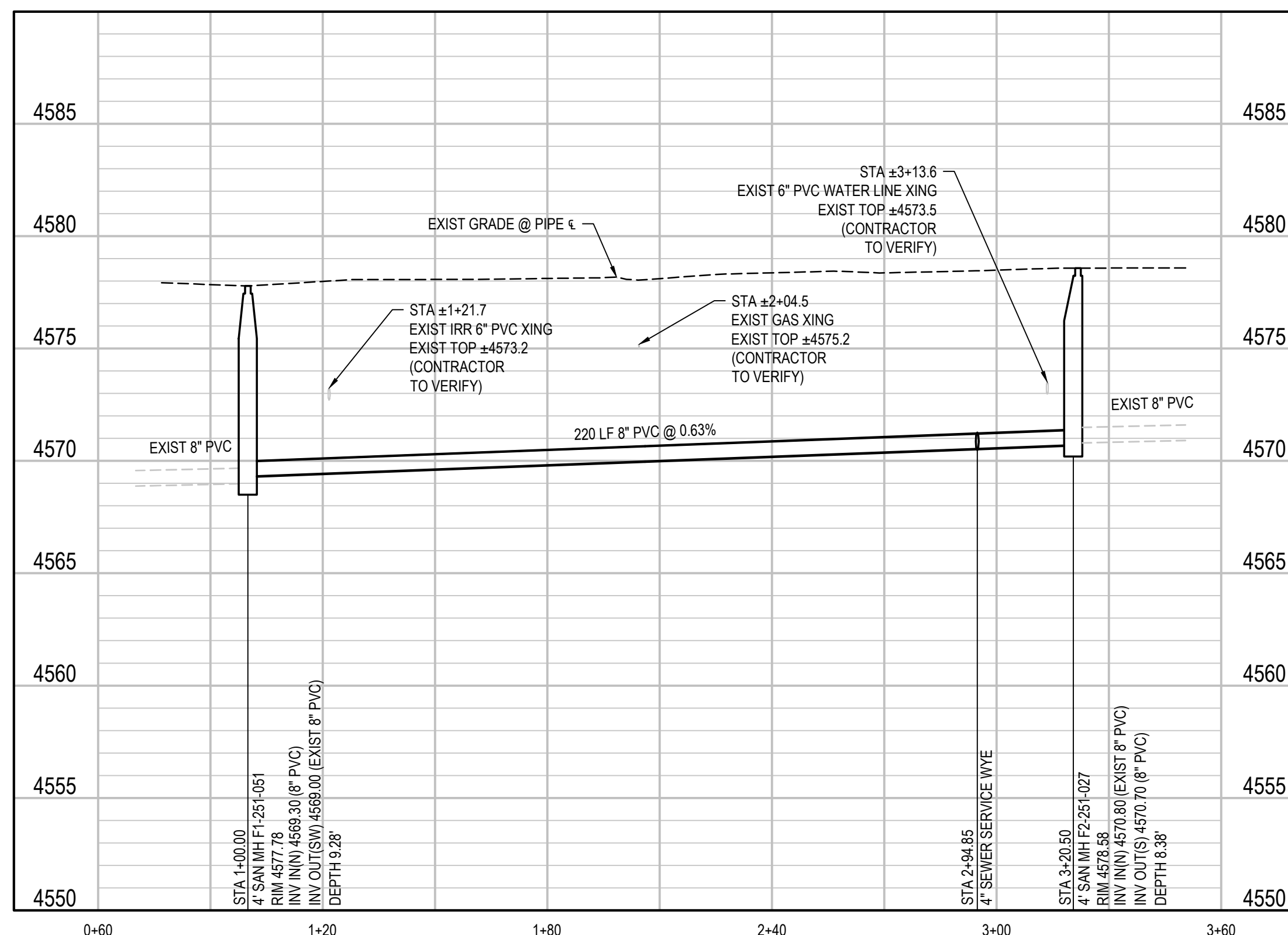
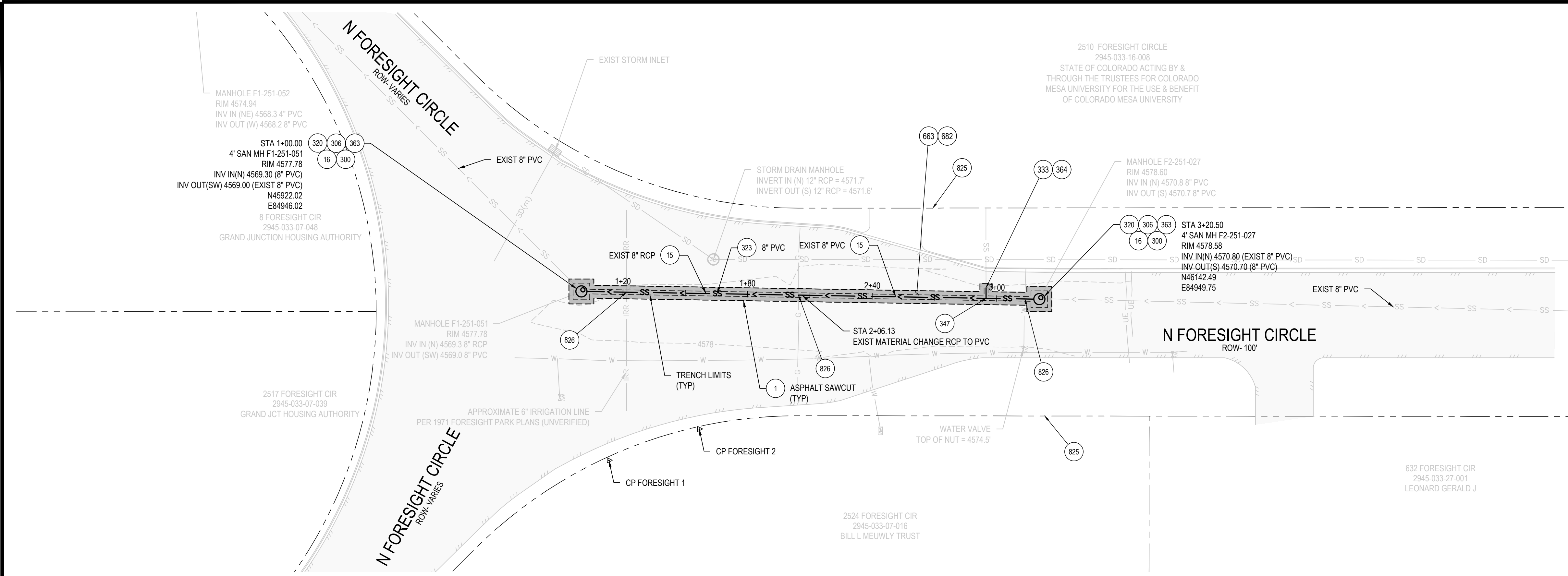


CITY OF GRAND JUNCTION
SANITARY SEWER REPLACEMENT PROJECT PHASE 1
OVERALL SANITARY SEWER KEYMAP

G1.0

CONSTRUCTION NOTES

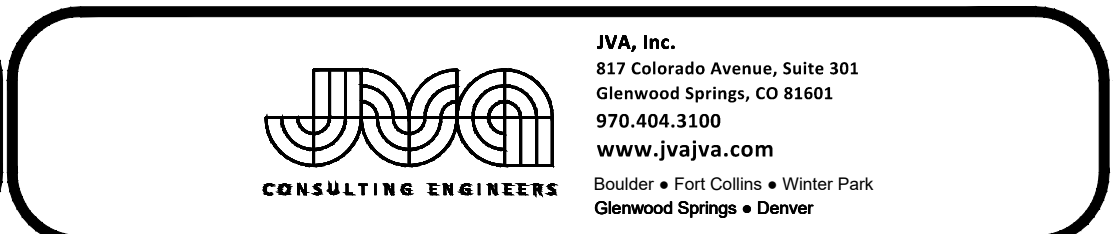
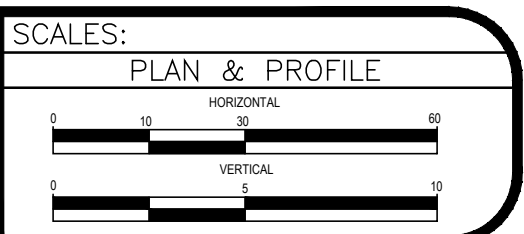
- 1 202 - REMOVAL OF ASPHALT MAT. CUT AND REMOVE ASPHALT AS SHOWN.
- 15 202 - REMOVAL OF PIPE AS SHOWN. (SIZE AND TYPE AS SHOWN ON PLAN)
- 16 202 - REMOVAL OF MANHOLE. CONTRACTOR SHALL SALVAGE RING AND COVER AND DELIVER TO CITY SHOPS.
- 300 102.11/108.5 - SANITARY SEWER BASIC MANHOLE (48" I.D.). INCLUDES CONNECTION OF ADJACENT SEWER LINE, FORMING INVERTS AND ADJUSTING TO FINAL GRADE. (SEE CITY OF GRAND JUNCTION STANDARD DETAIL SS-02). FIELD COAT MANHOLE INTERIOR WITH SYSTEM NO. 30 PER SECTION 09900 OF THE PROJECT MANUAL.
- 306 102.11/108.5 - MANHOLE BARREL SECTION (D=5') (48" I.D.).
- 320 102.11 - CONNECT MANHOLE TO EXISTING SANITARY SEWER (8" PIPE). CONTRACTOR SHALL USE A CAST-IN-PLACE BASE TO FORM INVERT AROUND THE EXISTING PIPE. "O" RING GASKETS OR OTHER WATER STOPS ARE TO BE PLACED AROUND THE INLET AND OUTLET PIPES TO ENSURE A WATER TIGHT SEAL IS PROVIDED AT THE MH BASE. CARE SHOULD BE TAKEN SO THAT THE EXISTING LINE DOES NOT SAG OR FLOAT DURING CONSTRUCTION OF THE BASE. THE TOP OF THE EXISTING PIPE SHALL BE CUT AND REMOVED TO PROVIDE FOR THE NEW INVERT IN. CONTRACTOR SHALL CONTROL SEWER FLOW AND NOT ALLOW DEBRIS TO ENTER THE PIPE.
- 323 102.9/108.2 - 8" GRAVITY SEWER PIPE (SDR 35 PVC). INCLUDES TYPE A BEDDING AND HAUNCHING MATERIAL AND BACKFILL OF TRENCH WITH NATIVE MATERIALS MEETING 103.16 EARTH BACKFILL MATERIAL.
- 333 102.9/108.2 - 4" SEWER SERVICE PIPE (SDR 35 PVC). INCLUDES TYPE A BEDDING AND HAUNCHING MATERIAL. BACKFILL OF TRENCH WITH NATIVE MATERIALS MEETING 103.16 EARTH BACKFILL MATERIAL, AND END-OF-SERVICE CAP.
- 347 102.9/108.3 - 8" X 4" SEWER SERVICE TAP. FULL BODY WYE (SEE STD. DETAIL SS-06).
- 363 BYPASS PUMPING WILL BE REQUIRED FOR CONSTRUCTION.
- 364 CONNECT TO EXISTING SEWER PIPE. THE CONTRACT PRICE FOR SEWER PIPE SHALL INCLUDE THE COST OF CONNECTION TO EXISTING PIPELINE
- 663 304 - AGGREGATE BASE COURSE (CLASS 6) (6" THICK)
- 682 401.08 - HOT BITUMINOUS PAVEMENT (PATCHING) (4" THICK) (GRADING SX, BINDER GRADE PG 64-28) (TWO 2" LIFTS)
- 809 PROTECT MANHOLE
- 825 CONTRACTOR IS RESPONSIBLE FOR REPAIR COSTS ASSOCIATED WITH ANY/ALL DAMAGE TO PRIVATE PROPERTY BEHIND ROW LINE OR EASEMENT LIMITS.
- 826 PROTECT EXISTING UTILITY LINE IN PLACE.



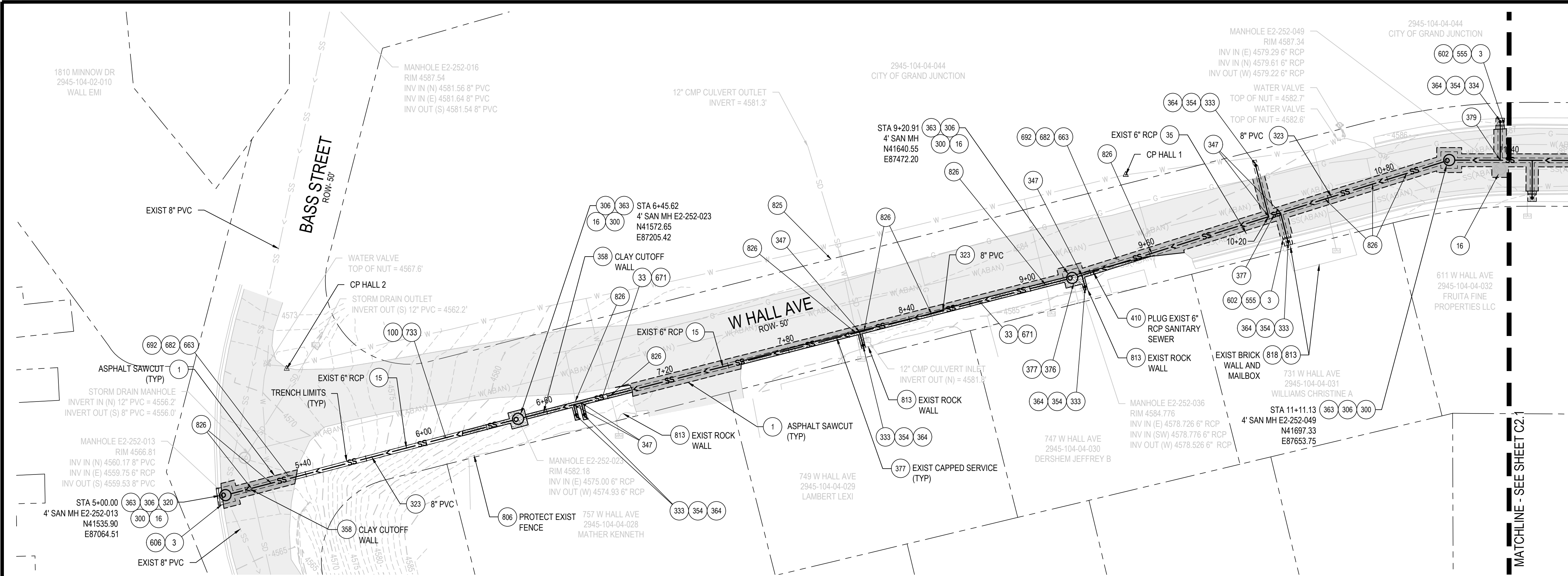
- UTILITY NOTES:
1. CONTRACTOR TO FIELD VERIFY ALL EXISTING UNDERGROUND UTILITIES PRIOR TO CONSTRUCTION. REFER TO GENERAL NOTES FOR UTILITY LOCATION AND PROTECTION.
 2. CONTRACTOR TO POTHOLE EXISTING UTILITIES AT PROPOSED UTILITY CROSSINGS IN ROW PRIOR TO CONSTRUCTION.
 3. EXISTING CAPPED SERVICE LINES TO BE REMOVED.
 4. FOR ALL EXISTING SERVICE LINES THAT DO NOT APPEAR TO BE IN SERVICE, CONTRACTOR SHALL COORDINATE WITH THE CITY TO LOCATE AND DYE TEST THE LINE TO CONFIRM IF THE SERVICE LINE NEEDS TO BE RECONNECTED.
 5. ALL SANITARY SEWER SERVICE LOCATIONS ARE APPROXIMATE. CONTRACTOR TO VERIFY EXISTING SEWER SERVICE LOCATIONS. COORDINATE ALL WORK WITH CITY AND OWNER
 6. EXISTING PVC SANITARY SEWER SERVICES SHALL BE RECONNECTED 5' FROM MAIN UNLESS OTHERWISE NOTED
 7. ALL EXISTING NON-PVC SANITARY SERVICES SHALL BE REMOVED AND REPLACED BEYOND THE LIMITS OF PAVEMENT AS DIRECTED BY THE ENGINEER IN THE FIELD.

REVISION	DESCRIPTION	DATE
REVISION A		
REVISION B		
REVISION C		
REVISION D		

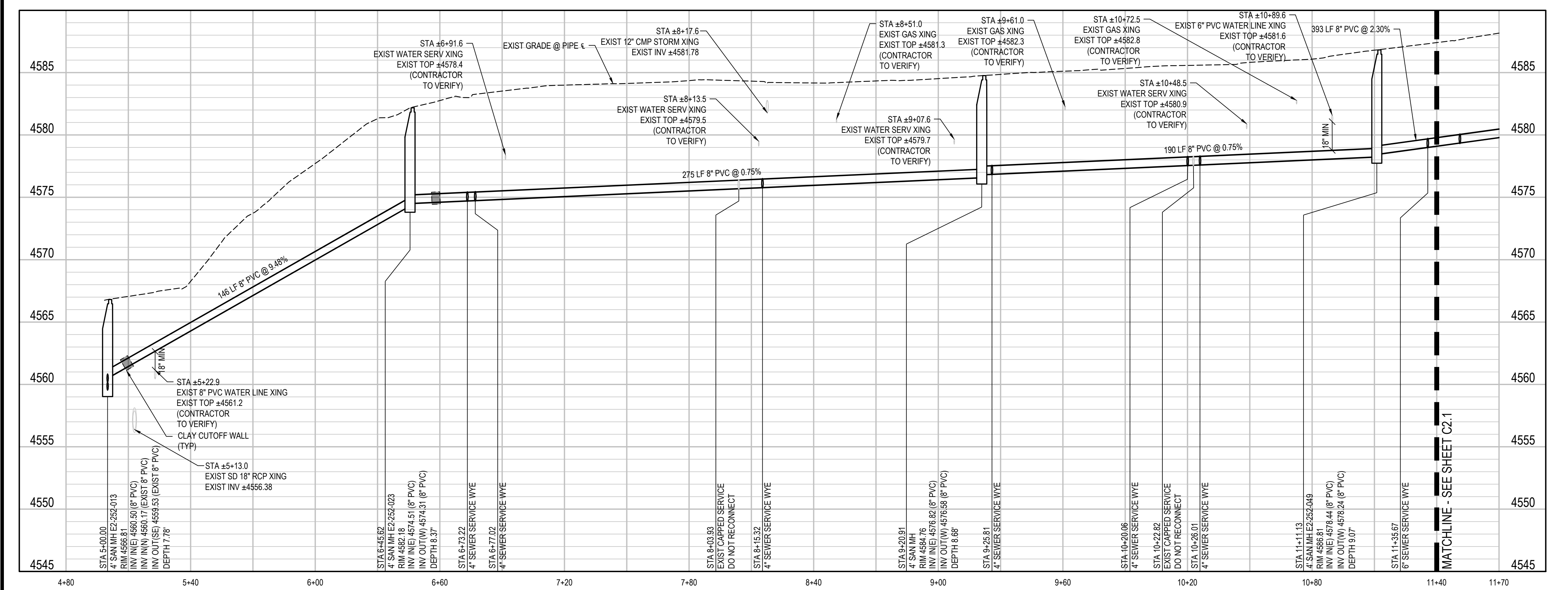
DRAWN BY SAA DATE MAY 2026
 DESIGNED BY ZCE/AMF DATE MAY 2026
 CHECKED BY JUM/AMR DATE MAY 2026
 APPROVED BY _____ DATE _____



CITY OF GRAND JUNCTION
 SANITARY SEWER REPLACEMENT PROJECT PHASE 1
 FORESIGHT CIRCLE SANITARY SEWER
 PLAN AND PROFILE



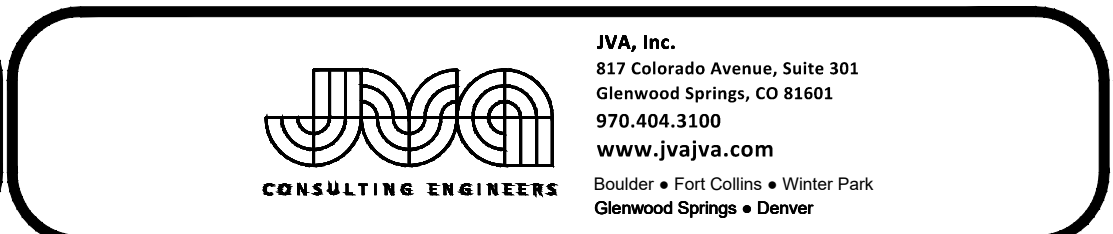
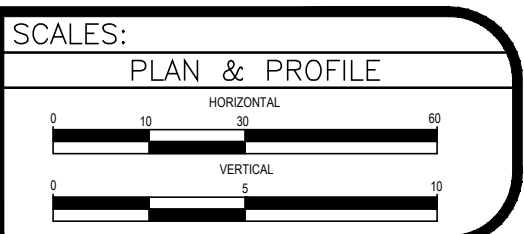
- CONSTRUCTION NOTES**
- 1 202 - REMOVAL OF ASPHALT MAT. CUT AND REMOVE ASPHALT AS SHOWN.
 - 3 202 - REMOVAL OF CONCRETE. SAW CUT AND REMOVE CONCRETE AS SHOWN. INCLUDES BUT NOT LIMITED TO CURB, GUTTER, SIDEWALK, DRIVEWAY, SLABS, V-PAN, CURB RAMPS, INTERSECTION CORNERS, APRONS, AND LANDSCAPE BORDERS.
 - 15 202 - REMOVAL OF PIPE AS SHOWN. (SIZE AND TYPE AS SHOWN ON PLAN)
 - 16 202 - REMOVAL OF MANHOLE. CONTRACTOR SHALL SALVAGE RING AND COVER AND DELIVER TO CITY SHOPS.
 - 33 REMOVAL OF EXISTING GRAVEL. STOCKPILE PER PROPERTY OWNERS RECOMMENDATION
 - 35 202 - ABANDON PIPE. ABANDON BY PLUGGING REMAINING ENDS WITH CONCRETE.
 - 100 210 - RESET LANDSCAPE GROUND COVER. CONTRACTOR SHALL REMOVE GROUND COVER AND ANY UNDERLYING WEED BARRIER AS NEEDED AND STOCKPILE MATERIALS. CONTRACTOR SHALL RESET THESE MATERIALS AND PROVIDE ADDITIONAL MATERIALS AS NEEDED TO RESTORE LANDSCAPING.
 - 300 102.11/108.5 - SANITARY SEWER BASIC MANHOLE (48" I.D.). INCLUDES CONNECTION OF ADJACENT SEWER LINE, FORMING INVERTS AND ADJUSTING TO FINAL GRADE. (SEE CITY OF GRAND JUNCTION STANDARD DETAIL SS-02). FIELD COAT MANHOLE INTERIOR WITH SYSTEM NO. 30 PER SECTION 09900 OF THE PROJECT MANUAL.
 - 306 102.11/108.5 - MANHOLE BARREL SECTION (D=5) (48" I.D.).
 - 320 102.11 - CONNECT MANHOLE TO EXISTING SANITARY SEWER (8" PIPE). CONTRACTOR SHALL USE A CAST-IN-PLACE BASE TO FORM INVERT AROUND THE EXISTING PIPE. "O" RING GASKETS OR OTHER WATER STOPS ARE TO BE PLACED AROUND THE INLET AND OUTLET PIPES TO ENSURE A WATER TIGHT SEAL IS PROVIDED AT THE MH BASE. CARE SHOULD BE TAKEN SO THAT THE EXISTING LINE DOES NOT SAG OR FLOAT DURING CONSTRUCTION OF THE BASE. THE TOP OF THE EXISTING PIPE SHALL BE CUT AND REMOVED TO PROVIDE FOR THE NEW INVERT IN. CONTRACTOR SHALL CONTROL SEWER FLOW AND NOT ALLOW DEBRIS TO ENTER THE PIPE.
 - 323 102.9/108.2 - 8" GRAVITY SEWER PIPE (SDR 35 PVC). INCLUDES TYPE A BEDDING AND HAUNCHING MATERIAL AND BACKFILL OF TRENCH WITH NATIVE MATERIALS MEETING 103.16 EARTH BACKFILL MATERIAL.
 - 333 102.9/108.2 - 4" SEWER SERVICE PIPE (SDR 35 PVC). INCLUDES TYPE A BEDDING AND HAUNCHING MATERIAL, BACKFILL OF TRENCH WITH NATIVE MATERIALS MEETING 103.16 EARTH BACKFILL MATERIAL, AND END-OF-SERVICE CAP.
 - 334 102.9/108.2 - 6" SEWER SERVICE PIPE (SDR 35 PVC). INCLUDES TYPE A BEDDING AND HAUNCHING MATERIAL, BACKFILL OF TRENCH WITH NATIVE MATERIALS MEETING 103.16 EARTH BACKFILL MATERIAL, AND END-OF-SERVICE CAP.
 - 347 102.9/108.3 - 8" X 4" SEWER SERVICE TAP. FULL BODY WYE (SEE STD. DETAIL SS-06).
 - 354 104.20 - INSTALL 2-WAY SANITARY SEWER SERVICE CLEANOUT (STD. DETAIL SS-07). INCLUDES CLEANOUT RING AND COVER AND CONCRETE COLLAR IN UNPAVED AREAS (SEE STD. DETAIL SS-07).
 - 358 103.10 - CLAY CUT-OFF WALL
 - 363 BYPASS PUMPING WILL BE REQUIRED FOR CONSTRUCTION.
 - 364 CONNECT TO EXISTING SEWER PIPE. THE CONTRACT PRICE FOR SEWER PIPE SHALL INCLUDE THE COST OF CONNECTION TO EXISTING PIPELINE
 - 376 DYE TEST SANITARY SEWER SERVICE
 - 377 EXIST CAPPED SERVICE, DO NOT RECONNECT
 - 379 102.9/108.3 - 8" X 6" SEWER SERVICE TAP. FULL BODY WYE (SEE STD. DETAIL SS-06).
 - 410 102.8/108.3 - END CAP / PLUG (SIZE AS SHOWN)
 - 555 608.06 - CONCRETE SIDEWALK (4" THICK)
 - 602 608.06 - CONCRETE CURB AND GUTTER (2' WIDE)
 - 606 608.06 - CONCRETE DRIVE OVER CURB AND GUTTER (2'-6" WIDE)
 - 663 304 - AGGREGATE BASE COURSE (CLASS 6) (6" THICK)
 - 671 304 - WASHED ROCK SURFACE COURSE FOR GRAVEL DRIVEWAYS. MATCH EXISTING TYPE. THICKNESS IS 2" MIN. AND 3" MAX.
 - 682 401.08 - HOT BITUMINOUS PAVEMENT (PATCHING) (4" THICK) (GRADING SX, BINDER GRADE PG 64-28) (TWO 2" LIFTS)
 - 692 CHIP AND SEAL PAVING. MATCH EXISTING THICKNESS
 - 733 212 - HYDROSEED WITH NATIVE SEED MIX.
 - 806 PROTECT FENCE
 - 813 PROTECT LANDSCAPE APPURTENANCE (TYPE AS SHOWN ON PLAN).
 - 818 PROTECT MAILBOX
 - 825 CONTRACTOR IS RESPONSIBLE FOR REPAIR COSTS ASSOCIATED WITH ANY/ALL DAMAGE TO PRIVATE PROPERTY BEHIND ROW LINE OR EASEMENT LIMITS.
 - 826 PROTECT EXISTING UTILITY LINE IN PLACE.



- UTILITY NOTES:**
1. CONTRACTOR TO FIELD VERIFY ALL EXISTING UNDERGROUND UTILITIES PRIOR TO CONSTRUCTION. REFER TO GENERAL NOTES FOR UTILITY LOCATION AND PROTECTION.
 2. CONTRACTOR TO POTHOLE TO POTHOLE EXISTING UTILITIES AT PROPOSED UTILITY CROSSINGS IN ROW PRIOR TO CONSTRUCTION.
 3. EXISTING CAPPED SERVICE LINES TO BE REMOVED.
 4. FOR ALL EXISTING SERVICE LINES THAT DO NOT APPEAR TO BE IN SERVICE, CONTRACTOR SHALL COORDINATE WITH THE CITY TO LOCATE AND DYE TEST THE LINE TO CONFIRM IF THE SERVICE LINE NEEDS TO BE RECONNECTED.
 5. ALL SANITARY SEWER SERVICE LOCATIONS ARE APPROXIMATE. CONTRACTOR TO VERIFY EXISTING SEWER SERVICE LOCATIONS. COORDINATE ALL WORK WITH CITY AND OWNER
 6. EXISTING PVC SANITARY SEWER SERVICES SHALL BE RECONNECTED 5' FROM MAIN UNLESS OTHERWISE NOTED
 7. ALL EXISTING NON-PVC SANITARY SERVICES SHALL BE REMOVED AND REPLACED BEYOND THE LIMITS OF PAVEMENT AS DIRECTED BY THE ENGINEER IN THE FIELD.

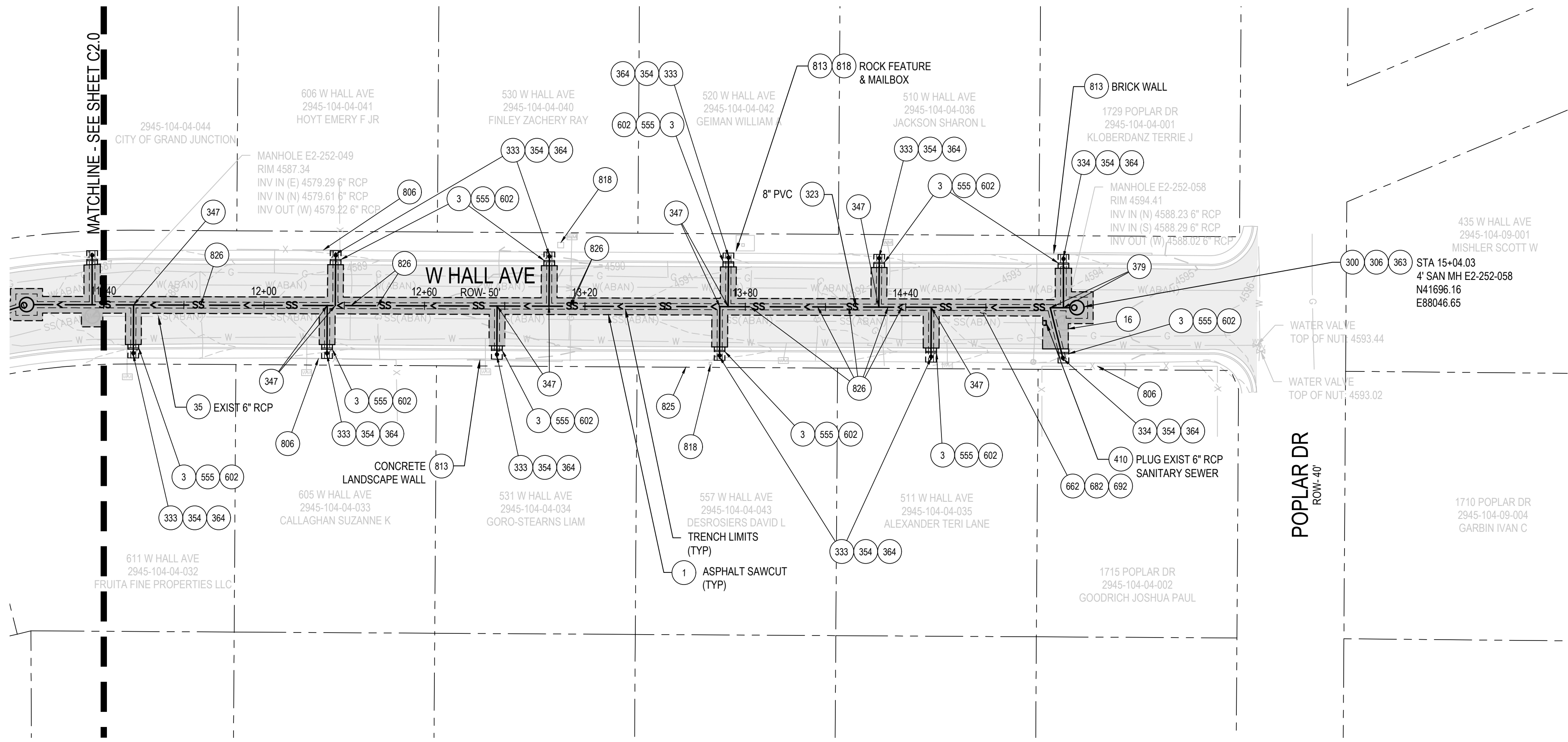
REVISION	DESCRIPTION	DATE

DRAWN BY SAA DATE MAY 2026
 DESIGNED BY ZCF/AMF DATE MAY 2026
 CHECKED BY JJM/AMR DATE MAY 2026
 APPROVED BY _____ DATE _____



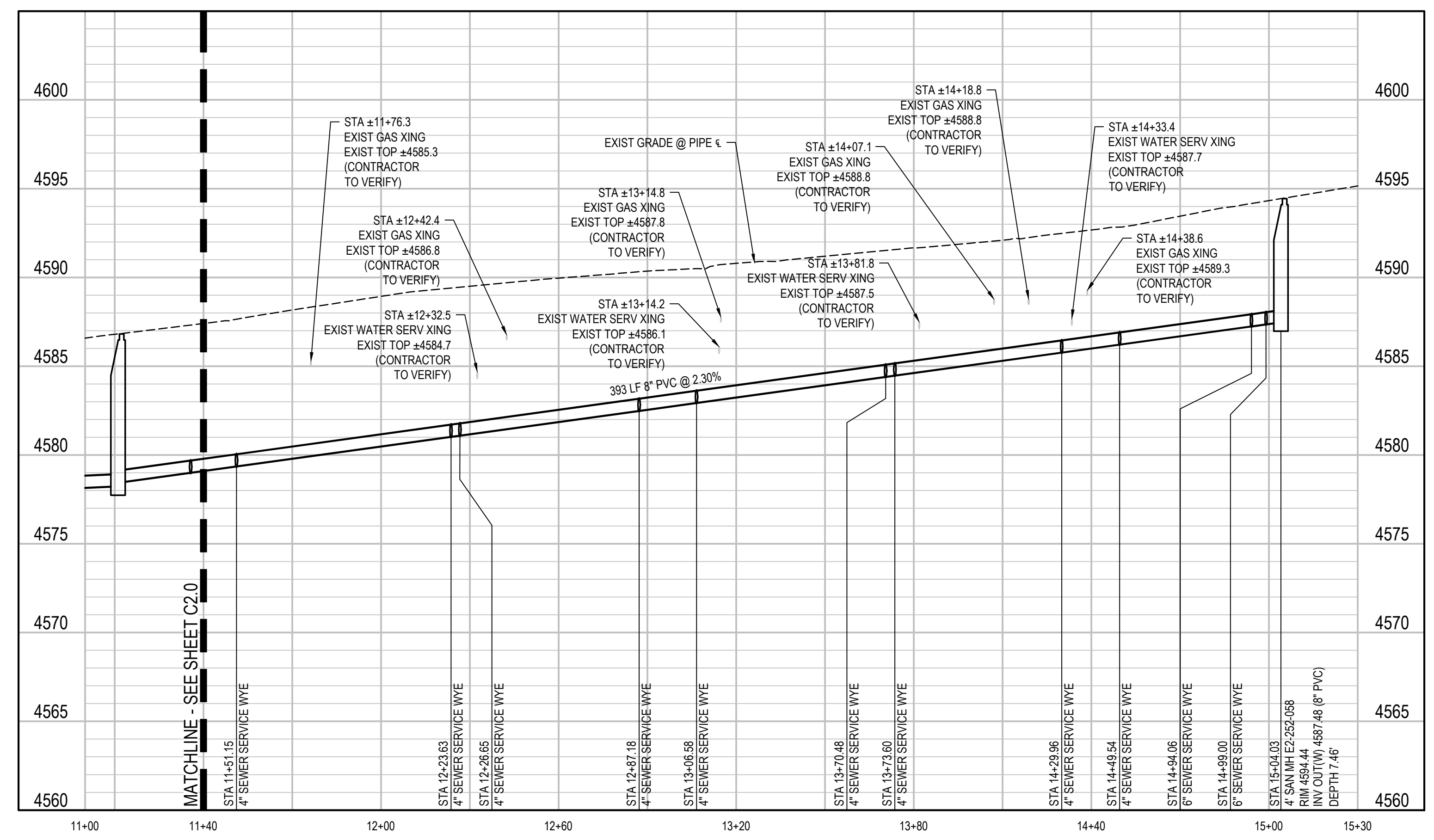
CITY OF GRAND JUNCTION
SANITARY SEWER REPLACEMENT PROJECT PHASE 1
HALL AVE SANITARY SEWER
PLAN AND PROFILE

C2.0



CONSTRUCTION NOTES

- 1 202 - REMOVAL OF ASPHALT MAT. CUT AND REMOVE ASPHALT AS SHOWN.
- 3 202 - REMOVAL OF CONCRETE. SAW CUT AND REMOVE CONCRETE AS SHOWN. INCLUDES BUT NOT LIMITED TO CURB, GUTTER, SIDEWALK, DRIVEWAY, SLABS, V-PAN, CURB RAMPS, INTERSECTION CORNERS, APRONS, AND LANDSCAPE BORDERS.
- 15 202 - REMOVAL OF PIPE AS SHOWN. (SIZE AND TYPE AS SHOWN ON PLAN)
- 16 202 - REMOVAL OF MANHOLE. CONTRACTOR SHALL SALVAGE RING AND COVER AND DELIVER TO CITY SHOPS.
- 35 202 - ABANDON PIPE. ABANDON BY PLUGGING REMAINING ENDS WITH CONCRETE.
- 300 102.11/108.5 - SANITARY SEWER BASIC MANHOLE (48" I.D.). INCLUDES CONNECTION OF ADJACENT SEWER LINE, FORMING INVERTS AND ADJUSTING TO FINAL GRADE. (SEE CITY OF GRAND JUNCTION STANDARD DETAIL SS-02). FIELD COAT MANHOLE INTERIOR WITH SYSTEM NO. 30 PER SECTION 09900 OF THE PROJECT MANUAL.
- 306 102.11/108.5 - MANHOLE BARREL SECTION (D>5') (48" I.D.).
- 323 102.9/108.2 - 8" GRAVITY SEWER PIPE (SDR 35 PVC). INCLUDES TYPE A BEDDING AND HAUNCHING MATERIAL AND BACKFILL OF TRENCH WITH NATIVE MATERIALS MEETING 103.16 EARTH BACKFILL MATERIAL.
- 333 102.9/108.2 - 4" SEWER SERVICE PIPE (SDR 35 PVC). INCLUDES TYPE A BEDDING AND HAUNCHING MATERIAL. BACKFILL OF TRENCH WITH NATIVE MATERIALS MEETING 103.16 EARTH BACKFILL MATERIAL, AND END-OF-SERVICE CAP.
- 334 102.9/108.2 - 6" SEWER SERVICE PIPE (SDR 35 PVC). INCLUDES TYPE A BEDDING AND HAUNCHING MATERIAL. BACKFILL OF TRENCH WITH NATIVE MATERIALS MEETING 103.16 EARTH BACKFILL MATERIAL, AND END-OF-SERVICE CAP.
- 347 102.9/108.3 - 8" X 4" SEWER SERVICE TAP. FULL BODY WYE (SEE STD. DETAIL SS-06).
- 354 104.20 - INSTALL 2-WAY SANITARY SEWER SERVICE CLEANOUT (STD. DETAIL SS-07). INCLUDES CLEANOUT RING AND COVER AND CONCRETE COLLAR IN UNPAVED AREAS (SEE STD. DETAIL SS-07).
- 363 BYPASS PUMPING WILL BE REQUIRED FOR CONSTRUCTION.
- 364 CONNECT TO EXISTING SEWER PIPE. THE CONTRACT PRICE FOR SEWER PIPE SHALL INCLUDE THE COST OF CONNECTION TO EXISTING PIPELINE.
- 379 102.9/108.3 - 8" X 6" SEWER SERVICE TAP. FULL BODY WYE (SEE STD. DETAIL SS-06).
- 410 102.8/108.3 - END CAP / PLUG (SIZE AS SHOWN)
- 555 608.06 - CONCRETE SIDEWALK (4" THICK)
- 602 608.06 - CONCRETE CURB AND GUTTER (2" WIDE)
- 663 304 - AGGREGATE BASE COURSE (CLASS 6) (6" THICK)
- 682 401.08 - HOT BITUMINOUS PAVEMENT (PATCHING) (4" THICK) (GRADING SX, BINDER GRADE PG 64-28) (TWO 2" LIFTS)
- 692 CHIP AND SEAL PAVING. MATCH EXISTING THICKNESS
- 806 PROTECT FENCE
- 813 PROTECT LANDSCAPE APPURTENANCE (TYPE AS SHOWN ON PLAN).
- 818 PROTECT MAILBOX
- 825 CONTRACTOR IS RESPONSIBLE FOR REPAIR COSTS ASSOCIATED WITH ANY/ALL DAMAGE TO PRIVATE PROPERTY BEHIND ROW LINE OR EASEMENT LIMITS.
- 826 PROTECT EXISTING UTILITY LINE IN PLACE.



- UTILITY NOTES:
1. CONTRACTOR TO FIELD VERIFY ALL EXISTING UNDERGROUND UTILITIES PRIOR TO CONSTRUCTION. REFER TO GENERAL NOTES FOR UTILITY LOCATION AND PROTECTION.
 2. CONTRACTOR TO POTHOLE EXISTING UTILITIES AT PROPOSED UTILITY CROSSINGS IN ROW PRIOR TO CONSTRUCTION.
 3. EXISTING CAPPED SERVICE LINES TO BE REMOVED.
 4. FOR ALL EXISTING SERVICE LINES THAT DO NOT APPEAR TO BE IN SERVICE, CONTRACTOR SHALL COORDINATE WITH THE CITY TO LOCATE AND DYE TEST THE LINE TO CONFIRM IF THE SERVICE LINE NEEDS TO BE RECONNECTED.
 5. ALL SANITARY SEWER SERVICE LOCATIONS ARE APPROXIMATE. CONTRACTOR TO VERIFY EXISTING SEWER SERVICE LOCATIONS. COORDINATE ALL WORK WITH CITY AND OWNER
 6. EXISTING PVC SANITARY SEWER SERVICES SHALL BE RECONNECTED 5' FROM MAIN UNLESS OTHERWISE NOTED
 7. ALL EXISTING NON-PVC SANITARY SERVICES SHALL BE REMOVED AND REPLACED BEYOND THE LIMITS OF PAVEMENT AS DIRECTED BY THE ENGINEER IN THE FIELD.

REVISION	DESCRIPTION	DATE	DRAWN BY	DATE	SCALE:
REVISION 1			SAA	MAY 2026	PLAN & PROFILE
REVISION 2			DESIGNED BY ZCF/AMF	MAY 2026	
REVISION 3			CHECKED BY JUM/AMR	MAY 2026	
REVISION 4			APPROVED BY		
REVISION 5					



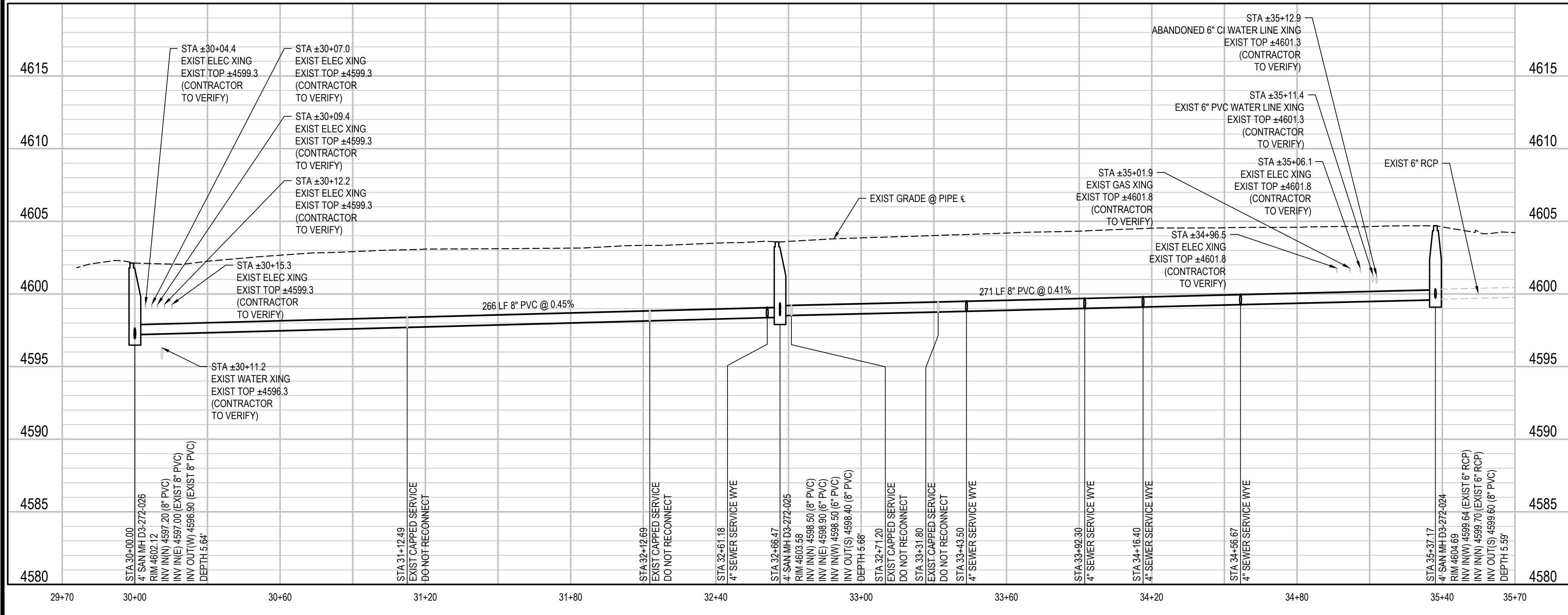
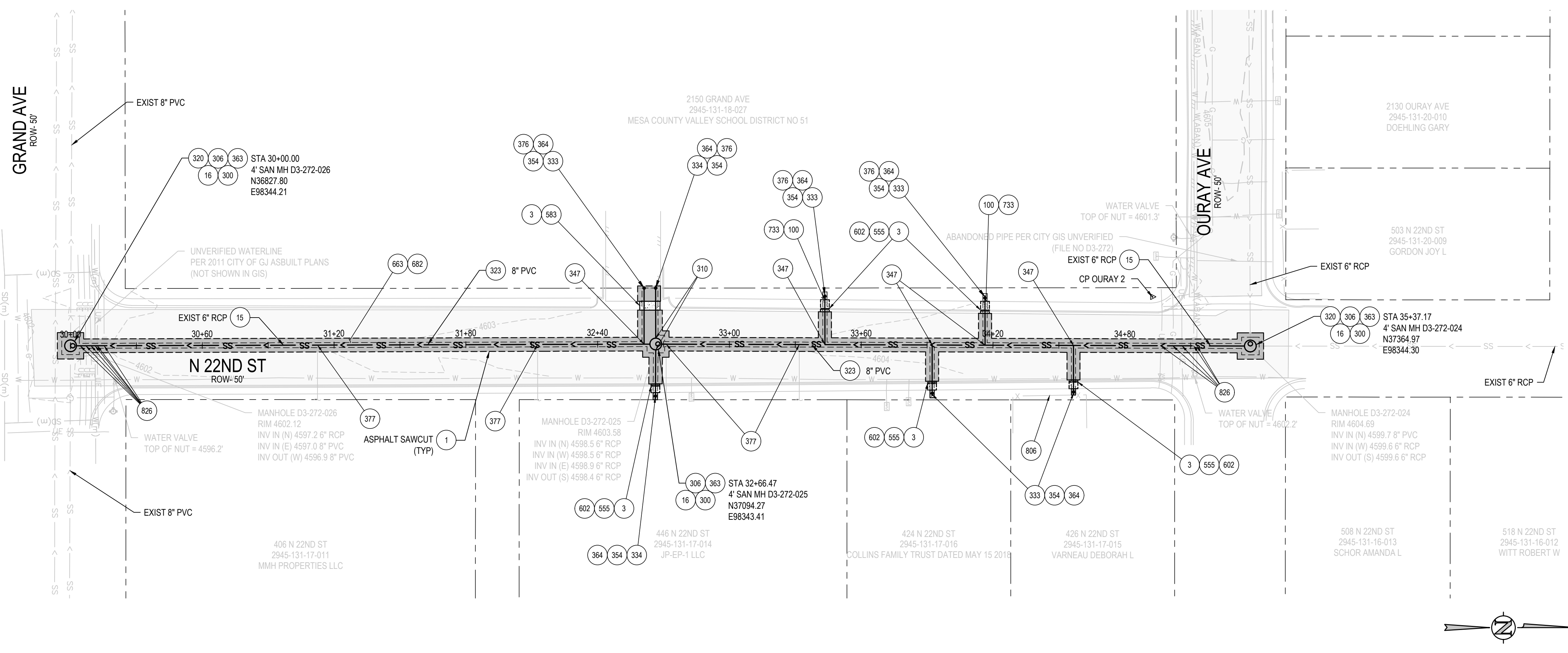
CITY OF GRAND JUNCTION
SANITARY SEWER REPLACEMENT PROJECT PHASE 1
HALL AVE SANITARY SEWER
PLAN AND PROFILE

C2.1

CONSTRUCTION NOTES

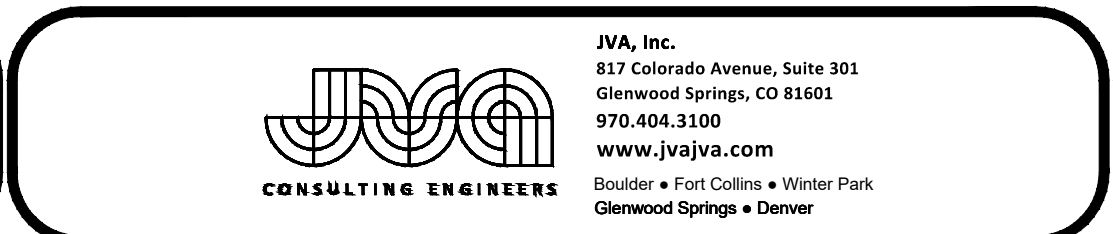
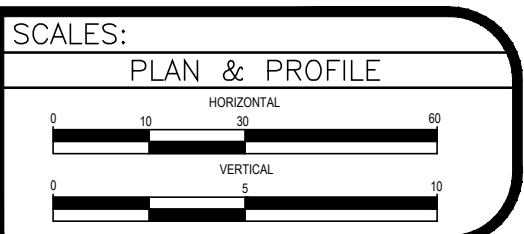
- 1 202 - REMOVAL OF ASPHALT MAT. CUT AND REMOVE ASPHALT AS SHOWN.
- 3 202 - REMOVAL OF CONCRETE. SAW CUT AND REMOVE CONCRETE AS SHOWN. INCLUDES BUT NOT LIMITED TO CURB, GUTTER, SIDEWALK, DRIVEWAY, SLABS, V-PAN, CURB RAMPS, INTERSECTION CORNERS, APRONS, AND LANDSCAPE BORDERS.
- 15 202 - REMOVAL OF PIPE AS SHOWN. (SIZE AND TYPE AS SHOWN ON PLAN)
- 16 202 - REMOVAL OF MANHOLE. CONTRACTOR SHALL SALVAGE RING AND COVER AND DELIVER TO CITY SHOPS.
- 100 210 - RESET LANDSCAPE GROUND COVER. CONTRACTOR SHALL REMOVE GROUND COVER AND ANY UNDERLYING WEED BARRIER AS NEEDED AND STOCKPILE MATERIALS. CONTRACTOR SHALL RESET THESE MATERIALS AND PROVIDE ADDITIONAL MATERIALS AS NEEDED TO RESTORE LANDSCAPING.
- 300 102.11/108.5 - SANITARY SEWER BASIC MANHOLE (48" I.D.). INCLUDES CONNECTION OF ADJACENT SEWER LINE, FORMING INVERTS AND ADJUSTING TO FINAL GRADE. (SEE CITY OF GRAND JUNCTION STANDARD DETAIL SS-02). FIELD COAT MANHOLE INTERIOR WITH SYSTEM NO. 30 PER SECTION 09900 OF THE PROJECT MANUAL.
- 306 102.11/108.5 - MANHOLE BARREL SECTION (D=5') (48" I.D.).
- 310 102.11/108.5 - CONNECT TO EXISTING MANHOLE (6" PIPE). (SEE CITY OF GRAND JUNCTION STANDARD DETAIL SS-08).
- 320 102.11 - CONNECT MANHOLE TO EXISTING SANITARY SEWER (6" & 8" PIPE). CONTRACTOR SHALL USE A CAST-IN-PLACE BASE TO FORM INVERT AROUND THE EXISTING PIPE. "O" RING GASKETS OR OTHER WATER STOPS ARE TO BE PLACED AROUND THE INLET AND OUTLET PIPES TO ENSURE A WATER TIGHT SEAL IS PROVIDED AT THE MH BASE. CARE SHOULD BE TAKEN SO THAT THE EXISTING LINE DOES NOT SAG OR FLOAT DURING CONSTRUCTION OF THE BASE. THE TOP OF THE EXISTING PIPE SHALL BE CUT AND REMOVED TO PROVIDE FOR THE NEW INVERT IN. CONTRACTOR SHALL CONTROL SEWER FLOW AND NOT ALLOW DEBRIS TO ENTER THE PIPE.
- 323 102.9/108.2 - 8" GRAVITY SEWER PIPE (SDR 35 PVC). INCLUDES TYPE A BEDDING AND HAUNCHING MATERIAL AND BACKFILL OF TRENCH WITH NATIVE MATERIALS MEETING 103.16 EARTH BACKFILL MATERIAL.
- 333 102.9/108.2 - 4" SEWER SERVICE PIPE (SDR 35 PVC). INCLUDES TYPE A BEDDING AND HAUNCHING MATERIAL, BACKFILL OF TRENCH WITH NATIVE MATERIALS MEETING 103.16 EARTH BACKFILL MATERIAL, AND END-OF-SERVICE CAP.
- 334 102.9/108.2 - 6" SEWER SERVICE PIPE (SDR 35 PVC). INCLUDES TYPE A BEDDING AND HAUNCHING MATERIAL, BACKFILL OF TRENCH WITH NATIVE MATERIALS MEETING 103.16 EARTH BACKFILL MATERIAL, AND END-OF-SERVICE CAP.
- 347 102.9/108.3 - 8" X 4" SEWER SERVICE TAP. FULL BODY WYE (SEE STD. DETAIL SS-06).
- 354 104.20 - INSTALL 2-WAY SANITARY SEWER SERVICE CLEANOUT (STD. DETAIL SS-07). INCLUDES CLEANOUT RING AND COVER AND CONCRETE COLLAR IN UNPAVED AREAS (SEE STD. DETAIL SS-07).
- 363 BYPASS PUMPING WILL BE REQUIRED FOR CONSTRUCTION.
- 364 CONNECT TO EXISTING SEWER PIPE. THE CONTRACT PRICE FOR SEWER PIPE SHALL INCLUDE THE COST OF CONNECTION TO EXISTING PIPELINE
- 376 DYE TEST SANITARY SEWER SERVICE
- 377 EXIST CAPPED SERVICE, DO NOT RECONNECT
- 555 608.06 - CONCRETE SIDEWALK (4" THICK)
- 581 608.06 - CONCRETE DRAINAGE PAN (6" WIDE)
- 583 608.06 - CONCRETE DRAINAGE PAN (4" WIDE)
- 602 608.06 - CONCRETE CURB AND GUTTER (2" WIDE)
- 663 304 - AGGREGATE BASE COURSE (CLASS 6) (6" THICK)
- 682 401.08 - HOT BITUMINOUS PAVEMENT (PATCHING) (4" THICK) (GRADING SX, BINDER GRADE PG 64-28) (TWO 2" LIFTS)
- 733 212 - HYDROSEED WITH NATIVE SEED MIX.
- 806 PROTECT FENCE
- 813 PROTECT LANDSCAPE APPURTENANCE (TYPE AS SHOWN ON PLAN).
- 825 CONTRACTOR IS RESPONSIBLE FOR REPAIR COSTS ASSOCIATED WITH ANY/ALL DAMAGE TO PRIVATE PROPERTY BEHIND ROW LINE OR EASEMENT LIMITS.
- 826 PROTECT EXISTING UTILITY LINE IN PLACE.

- UTILITY NOTES:
- CONTRACTOR TO FIELD VERIFY ALL EXISTING UNDERGROUND UTILITIES PRIOR TO CONSTRUCTION. REFER TO GENERAL NOTES FOR UTILITY LOCATION AND PROTECTION.
 - CONTRACTOR TO POTHOLE EXISTING UTILITIES AT PROPOSED UTILITY CROSSINGS IN ROW PRIOR TO CONSTRUCTION.
 - EXISTING CAPPED SERVICE LINES TO BE REMOVED.
 - FOR ALL EXISTING SERVICE LINES THAT DO NOT APPEAR TO BE IN SERVICE, CONTRACTOR SHALL COORDINATE WITH THE CITY TO LOCATE AND DYE TEST THE LINE TO CONFIRM IF THE SERVICE LINE NEEDS TO BE RECONNECTED.
 - ALL SANITARY SEWER SERVICE LOCATIONS ARE APPROXIMATE. CONTRACTOR TO VERIFY EXISTING SEWER SERVICE LOCATIONS. COORDINATE ALL WORK WITH CITY AND OWNER
 - EXISTING PVC SANITARY SEWER SERVICES SHALL BE RECONNECTED 5' FROM MAIN UNLESS OTHERWISE NOTED
 - ALL EXISTING NON-PVC SANITARY SERVICES SHALL BE REMOVED AND REPLACED BEYOND THE LIMITS OF PAVEMENT AS DIRECTED BY THE ENGINEER IN THE FIELD.



REVISION	DESCRIPTION	DATE

DRAWN BY	SAA	DATE	MAY 2026
DESIGNED BY	ZCF/AMF	DATE	MAY 2026
CHECKED BY	JJM/AMR	DATE	MAY 2026
APPROVED BY		DATE	



CITY OF GRAND JUNCTION
 SANITARY SEWER REPLACEMENT PROJECT PHASE 1
 OURAY AVE SANITARY SEWER
 PLAN AND PROFILE

C3.0