

RESOLUTION NO. 113-07

**A RESOLUTION VACATING A 20' UTILITY EASEMENT WITHIN LOT 1, BLOCK 1
OF THE ELAM SUBDIVISION, LOCATED ON THE
MESA STATE COLLEGE CAMPUS, 1100 NORTH AVENUE**

RECITALS:

A request for the vacation of a utility easement has been submitted in accordance with the Zoning and Development Code. The applicant has requested that the 20' utility easement located in Lot 1, Block 1, Elam Subdivision, be vacated. The 20-foot utility easement was dedicated in Book 3929, Pages 816-820 of the Mesa County Clerk and Recorders Office.

In a public hearing, the Planning Commission reviewed the request for the vacation request and determined that it satisfied the criteria as set forth and established in Section 2.11.C of the Zoning and Development Code. The proposed vacation is also consistent with the purpose and intent of the Growth Plan.

NOW, THEREFORE, BE IT RESOLVED BY THE CITY COUNCIL OF THE CITY OF GRAND JUNCTION THAT THE AREA DESCRIBED BELOW IS HEREBY VACATED.

All that certain part of an easement reserved for utility purposes in the City of Grand Junction, Ordinance No. 3759 vacating portions of Bunting Avenue and an alley, as recorded in Book 3929 at Pages 816-820 in the Office of the Mesa County Clerk and Recorder, said easement also being shown on the plat of Elam Subdivision, as recorded at Reception Number 2261431 in the Office of the Mesa County Clerk and Recorder, said certain part being more particularly described as follows:

Commencing at the southeast corner of Section 11, Township One South, Range One West of the Ute Meridian, City of Grand Junction, County of Mesa, State of Colorado, whence a hinge nail for the Northeast corner of Mesa College Campus Subdivision bears N00°03'39"E, a distance of 1316.66 feet, (according to the plat of said Elam Subdivision); thence N89°51'30"W, on the southerly line of Mesa College Campus Subdivision, for a distance of 669.85 feet; thence N00°00'59"W for a distance of 40.00 feet; thence S89°51'30"E for a distance of 50.00 feet; thence N00°00'59"W for a distance of 629.65 feet; thence S60°14'39"W for a distance of 80.62 feet to the point of beginning; thence the following eight courses and distances:

1. N89°59'26"W for a distance of 125.12 feet;
2. S00°00'25"E for a distance of 449.84 feet;
3. N89°51'14"W for a distance of 20.00 feet;
4. N00°00'25"W for a distance of 449.79 feet;
5. N89°59'26"W for a distance of 121.75 feet to a point on the easterly right-of-way line of Houston Avenue:

6. N00°00'25"W, on said easterly right-of-way line, for a distance of 20.02 feet;
7. S89°59'15"E for a distance of 266.86 feet;
8. S00°00'59"E for a distance of 20.00 feet to the beginning.

(containing 14,336 square feet, more or less)

SEE ATTACHED EXHIBIT "A"

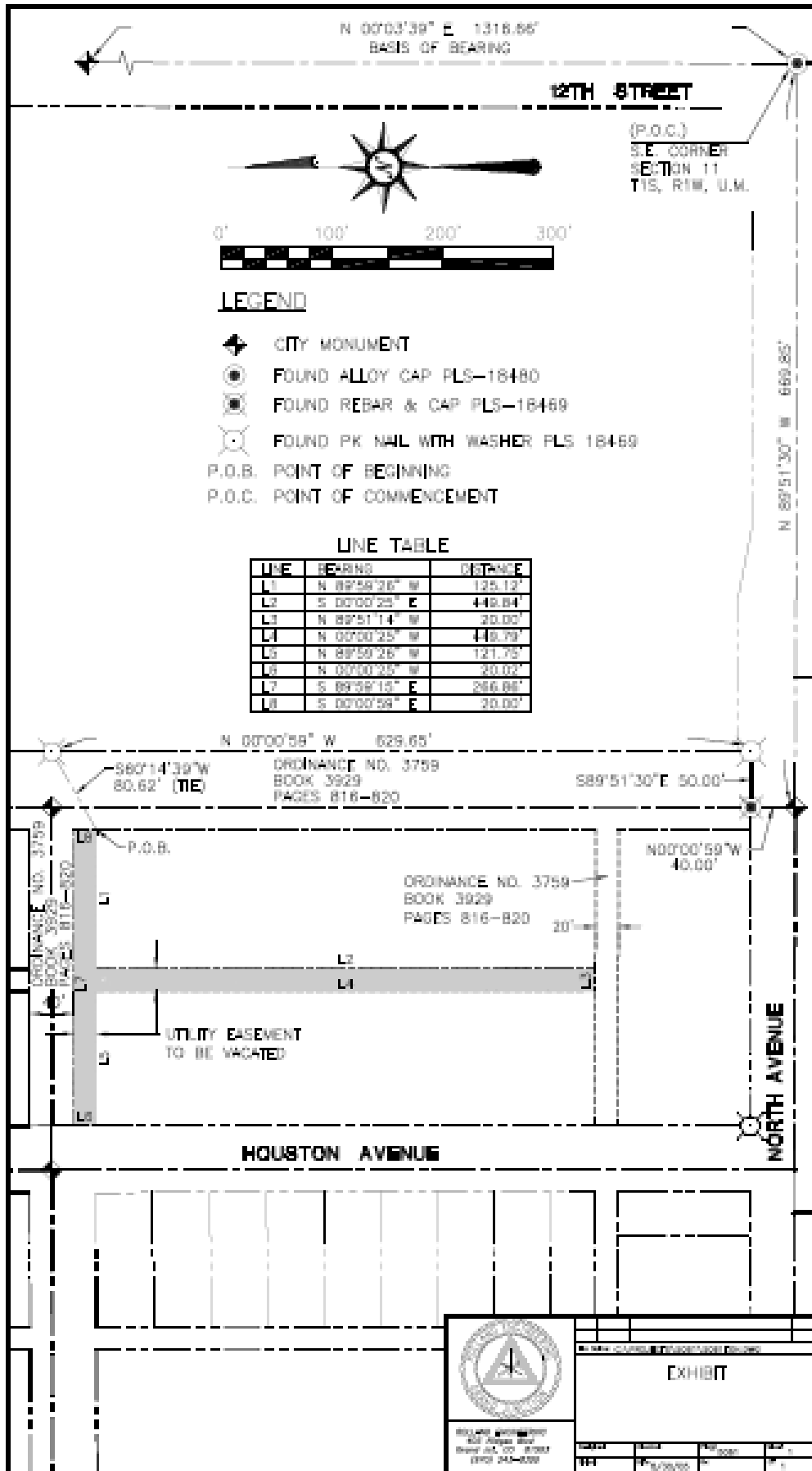
PASSED on this 30th day of July, 2007.

ATTEST:

/s/: Stephanie Tuin
City Clerk

/s/: James J. Doody
President of Council

EXHIBIT "A"



C:\PROGRA~1\ESRI\ARX\ARX\ARX.DWG, REVISION, REVISION, 7/10/2007 2:55:21 PM