

Parks and Recreation Advisory Board Minutes

Regular Meeting – February 5, 2015

Item 1: Meeting Called to Order by Dr. Scott McBrayer at 12:03 p.m.

Meeting Location: Parks and Recreation Administration Conference Room

Roll Call

Board Members Present: Scott Coleman
Bob Wiig
Gary Schroen
Dr. Scott McBrayer
Kristy Emerson
Kyle Emert
Marc Litzen
Jim Doody (Ex-Officio)

Parks & Recreation Staff Present: Rob Schoeber, Director
Tressa Fisher, Administrative Specialist
Traci Wieland, Recreation Superintendent
Mike Vendegna, Parks Superintendent

Guests: Libby Collins, Mesa Land Trust
Rob Bleiberg, Mesa Land Trust

Item 2: Approval of Minutes

Scott Coleman moved to approve the January 5, 2015 Parks and Recreation Advisory Board minutes with the discussed amendments. Marc Litzen seconded. The minutes were approved unanimously.

Motion adopted by the Parks and Recreation Advisory Board: Yes 7 No 0

Item 3: Three Sister's Park Plan

Libby Collins and Rob Bleiberg with Mesa Land Trust presented the proposed Three Sisters Park plan for the Board's approval (See attached). The property, which was deeded to the City in 2012 as a turn-key park, has consisted of three acquisitions totaling over 200 acres and costing over \$2 million, with Great Outdoors Colorado (GOCO) being a primary funder. As part of the agreement with the City to purchase the property, a park plan has been established for the public and is available on the Mesa Land Trust website.

Gary Schroen moved to approve the Three Sisters Park Plan as presented. Marc Litzen seconded. The motion was approved unanimously.

Motion adopted by the Parks and Recreation Advisory Board: Yes 7 No 0

Item 4: Whitman Park Survey

Rob Schoeber distributed the Whitman Park survey results, which included 119 responses (See attached). The stakeholder's group will be meeting later this afternoon to discuss the results and to attempt to move forward with some conceptual designs based on the results (similar to the development process of the

Matchett Park master plan). There currently are not any funds budgeted for changes to the park at this time; the committee is simply working to provide City Council with some options for a future decision.

Item 5: Canyon View Playground Update

Traci Wieland reported the Play to Dream Foundation has worked intensively with John Leane's family to come up with design for the new playground at Canyon View Park. The entire playground is proposed to be handicap accessible with a pour-n-place surface. The project is scheduled for a mid-May opening date that will include a large grand opening celebration.

Item 6: For the Good of the Community

Rob Schoeber briefly discussed the recent acid bottles found on playgrounds in the Denver area. In response, the City of Grand Junction has increased patrols in the parks and are on the lookout for similar situations.

Item 7: Adjourn

Meeting adjourned at 1:00 p.m.

Respectfully submitted,

Tressa Fisher
Administration Specialist



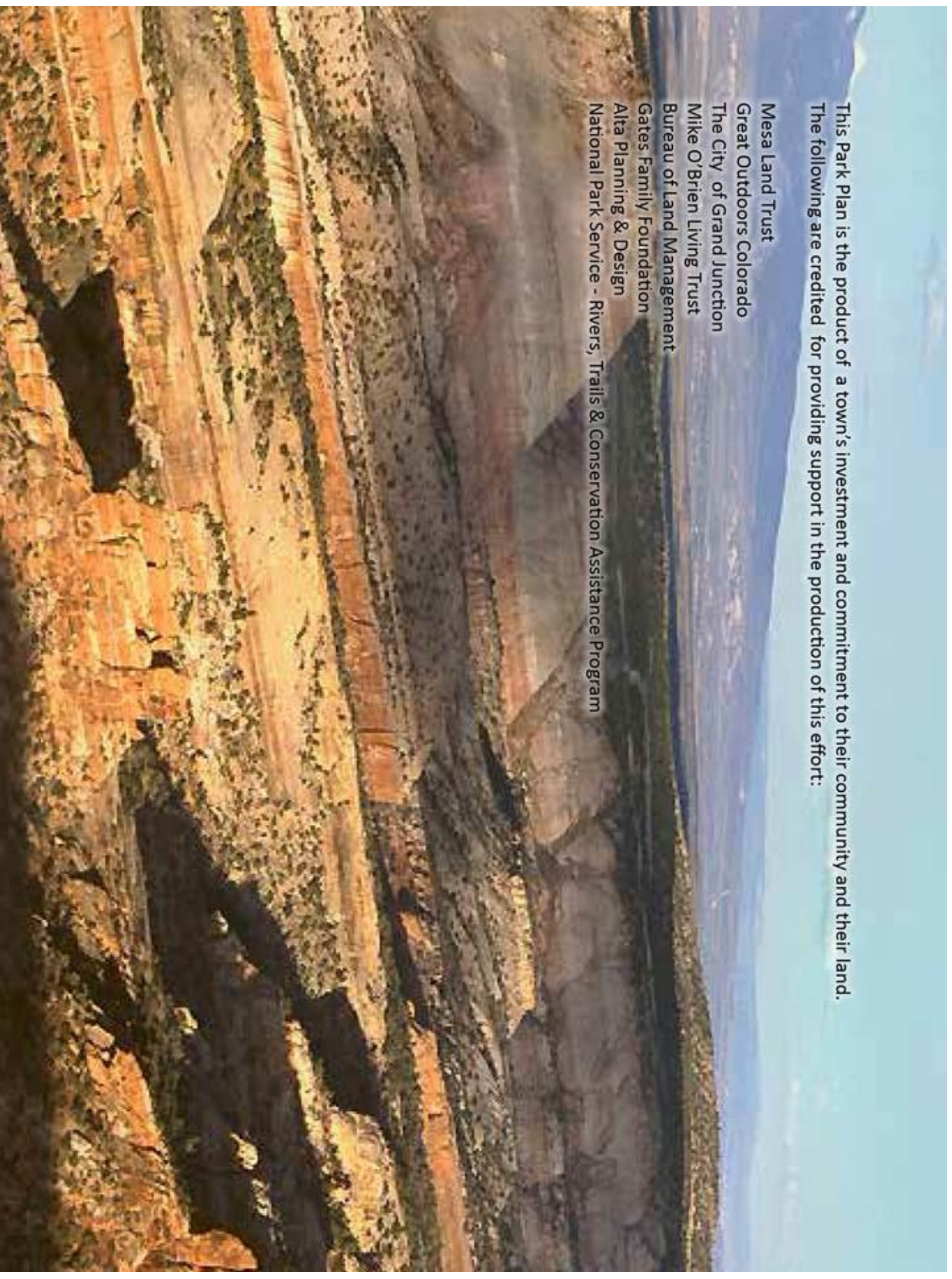
Three Sisters Park DRAFT Master Plan

Grand Junction, Colorado January 2015



This Park Plan is the product of a town's investment and commitment to their community and their land.
The following are credited for providing support in the production of this effort:

Mesa Land Trust
Great Outdoors Colorado
The City of Grand Junction
Mike O'Brien Living Trust
Bureau of Land Management
Gates Family Foundation
Alta Planning & Design
National Park Service - Rivers, Trails & Conservation Assistance Program





Goals of the Park Plan

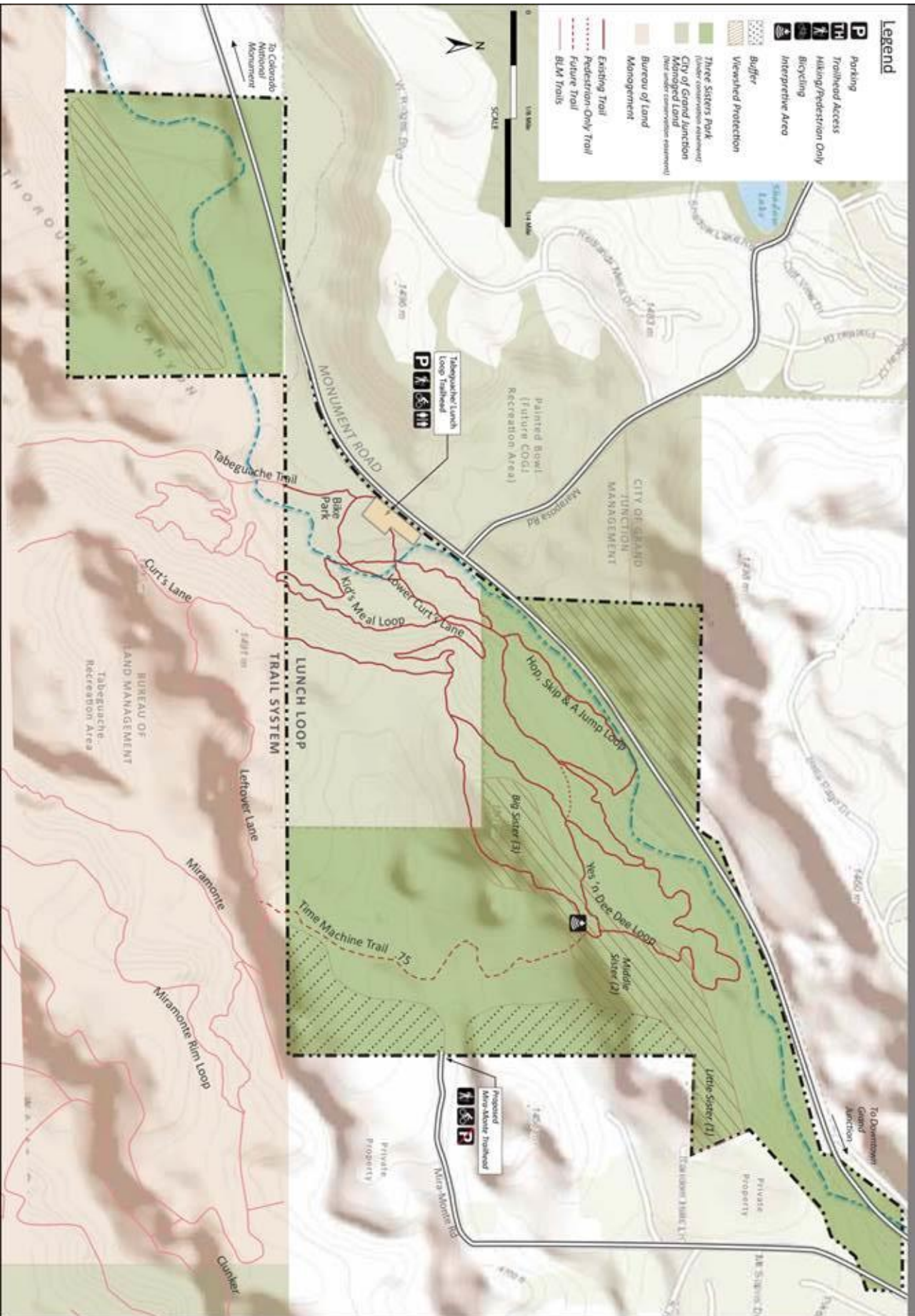
- Enhance the visitor experience
 - Trail users, runners, walkers, mountain bikers, dog walkers
 - Preserving views
 - Develop trails appealing to multiple trail users
 - Trail use, restoration, research, volunteer opportunities
- Sustain sound management of Park by City, BLM, and Mesa Land Trust
- Ensure conservation values through conservation easement

Trends in Community Use and Support

- Over 120,000 visits per year
- A 5 fold increase in 5 years
- 775,000 vehicles a year visit Colorado National Monument – well over half of those drive along Monument Road through the East Gate Entrance
- Extensive community participation in projects
- Mesa Land Trust was able to raise \$2.3 million, through over 1000 donations to protect landscapes along Monument Road



Three Sisters Park, Grand Junction CO



Community Use & Participation

BLM

COPMOBA

Endoholics and Single Track Sisters
Striders and Westslope Runners

Hilltop's Youth Crew

Junior Service League

Local Chapters of the Boy Scouts

CMU Faculty, Students

Tamarisk Coalition

Great Old Broads of the Wilderness

Volunteers for Outdoor Colorado

Grand Valley Trails Alliance

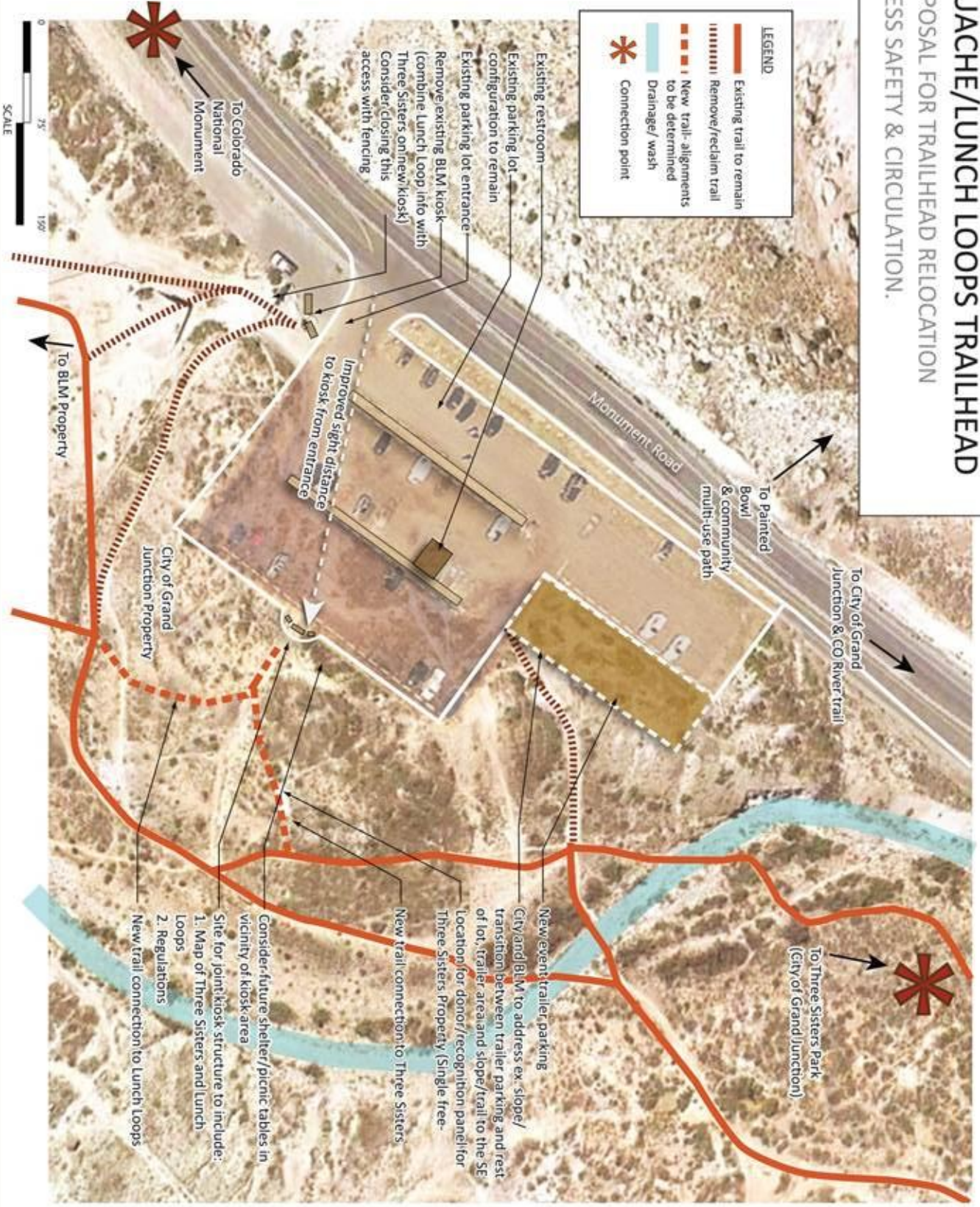
Aridlands Natural Resource Partners

Westwater Engineering

Colorado Division of Reclamation and Mining Safety



TABEGUACHE/LUNCH LOOPS TRAILHEAD ONE PROPOSAL FOR TRAILHEAD RELOCATION TO ADDRESS SAFETY & CIRCULATION.

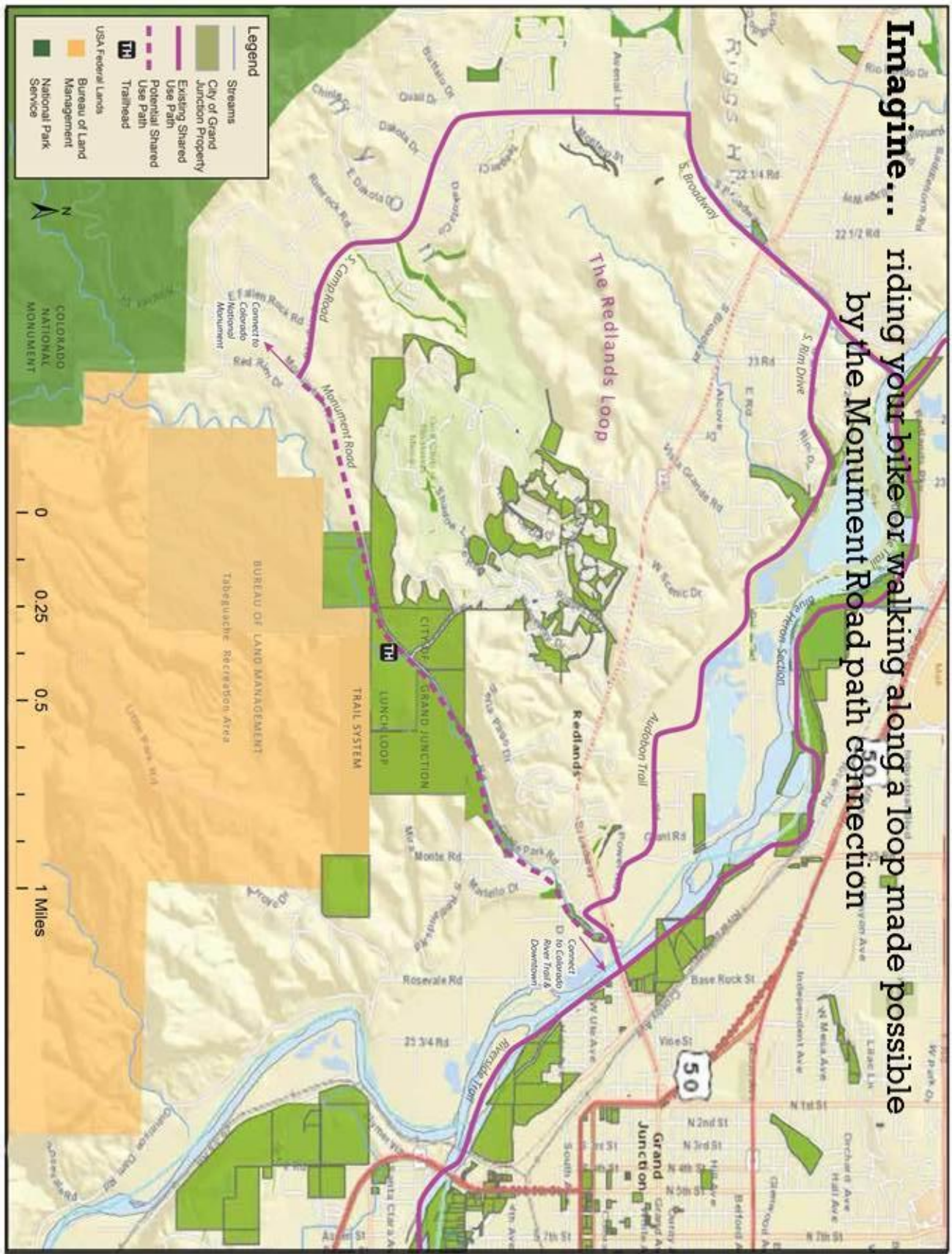


Connect... bike paths, the Riverfront Trail, downtown Grand Junction, and neighborhoods with a shared-use path.



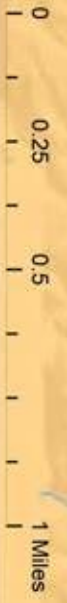
Imagine...

riding your bike or walking along a loop made possible by the Monument Road path connection



Legend

- Streams
- City of Grand Junction Property
- Existing Shared Use Path
- Potential Shared Use Path
- Trailhead
- USA Federal Lands
- Bureau of Land Management
- National Park Service



Question 1

Please rank the following options by dragging and dropping in order of your priorities. (#1 being the highest priority and #13 being the lowest priority)

#	Answer	1	2	3	4	5	6	7	8	9	10	11	12	13	Responses	Mean
1	Additional Park Features (playground, picnic tables, shelter, etc.)	14	20	13	6	5	7	3	2	3	5	4	4	4	119	4.3
2	Community Recreation Space (gymnasiums, meeting rooms, senior facilities, etc.)	10	10	15	16	12	6	11	7	6	6	5	5	0	119	5.1
3	Fitness Trail / Walking Track	17%	8%	13%	13%	10%	5%	9%	6%	5%	5%	4%	0%	0%	119	5.3
4	Arboretum (educational trail highlighting species of trees, flowers, shrubs, etc.)	4%	8%	11%	16%	8%	14%	12%	9%	6%	4%	1%	1%	1	119	5.5
5	Low Intensity Recreation (outdoor chess, table tennis, bocce ball, etc.)	4%	20%	13%	13%	11%	6%	7%	5%	4%	6%	5%	4	4	119	6.2
6	Outdoor Exhibits (park could be leased to museum)	3%	11%	5%	7%	13%	15%	11%	9%	12%	5%	4%	3%	0%	119	6.2
7	Public Event Plaza (fence entire space and utilize for special events and public gatherings)	9	12	11	11	3	8	18	14	13	10	8	0	2	119	6.2
8	Food Truck Park (seasonal)	8%	10%	9%	9%	3%	7%	15%	12%	11%	8%	7%	0%	2%	119	7.5
9	Dog Park	3%	6%	8%	7%	5%	8%	2%	7%	8%	13%	9%	13%	7%	119	7.7
10	Disc Golf Course	3%	5%	5%	7%	7%	4%	10%	18%	14%	7%	6%	8%	6%	119	7.9
11	Private Concessions (long-term leases with outdoor recreation operators (e.g. miniature golf))	3%	8%	1%	5%	7%	10%	11%	6%	13%	8%	13%	10%	5%	119	8.0
12	Art (do nothing)	0	2	6	4	15	17	7	15	7	20	8	14	4	119	8.0
13	State Park	0%	2%	5%	3%	13%	10%	6%	13%	6%	17%	7%	12%	3%	119	8.1
Total		1%	1%	1%	1%	1%	1%	1%	1%	1%	1%	1%	1%	1%	119	10.3

Question 2

There are a number of options available to increase parking in the downtown area. Please rank the following options by

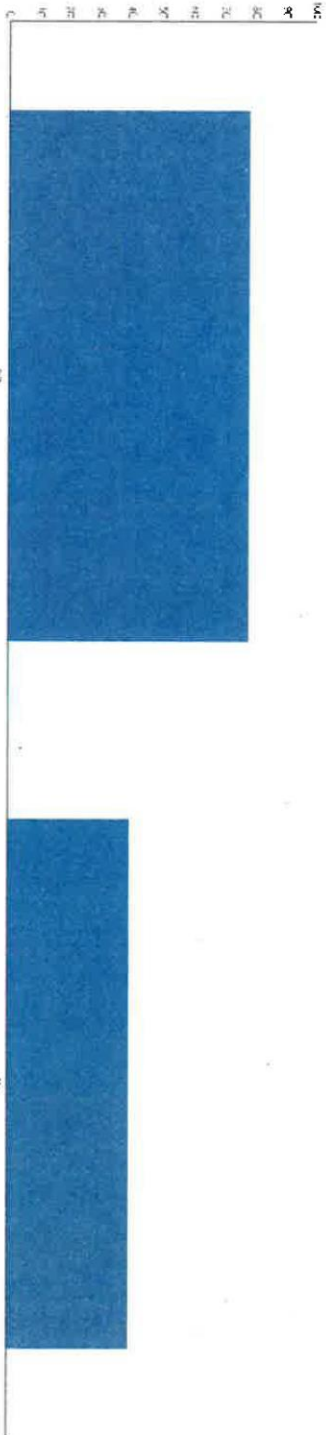
#	Answer	1	2	3	4	5	Responses	Mean
1	On-Street Parking (diagonal parking located on 4th Street and / or Live Avenue)	27	40	17	16	8	108	2.4
2	Museum Parking (relocating current museum parking to Whitman Park space allowing expansion for museum)	25%	17%	10%	15%	7%		
3	Flow-Through Parking Lot on the East and West Sides of the Park Similar to Sherwood Park	28	21	28	24	7	108	2.6
4	Reduce Park Size for Parking Spaces	25%	17%	10%	15%	7%		
5	Parking Garage	11	19	29	33	16	108	3.2
Total		13%	40%	30%	11%	50%		

Question 3

Would you support a sale, exchange, or long-term lease with this park property?

#	Answer	Bar	Response	%
1	Yes	66.10%	78	66.10%
2	No	33.90%	40	33.90%
	Total	100.00%	118	100.00%

Min Value	Max Value	Average Value	Variance	Standard Deviation	Total Responses	Total Respondents
1	2	1.3	0.2	0.5	118	118



#	Answer	Bar	Response	%
1	Yes	66.10%	78	66.10%
2	No	33.90%	40	33.90%
	Total	100.00%	118	100.00%

Question 4
 The City is moving forward with Las Colonias Park and Matchett Park developments. Please rank the Whitman Park renovation in terms of importance related to the other park developments.

#	Answer	Bar	Response	%
1	Much Higher	9.24%	11	9.24%
2	Higher	17.65%	21	17.65%
3	About the Same	21.01%	25	21.01%
6	Slightly Lower	15.13%	18	15.13%
7	Much Lower	36.97%	44	36.97%
	Total	0.00%	119	100.00%

Min Value	Max Value	Average Value	Variance	Standard Deviation	Total Responses	Total Respondents
1	7	4.6	5.4	2.3	119	119



Please use this space to include any general comments or suggestions you have.

- 1 Improvements to Whitman Park must include provisions to reduce/eliminate transient/homeless loitering, which in my opinion has reduced the general public's use of the park.
- 2 Without parking close by, the only folks who will use the park will be the same ones using it now. At age 70, it will have to be a lot more friendly to users other than those folks, for me to go
- 3 Sale or lease to the museum or multiple use with the museum would be the best option
- 4 Please clean this park up.....it looks terrible
- 5 Proximity to bus terminal will always be a problem due to nature of many bus users. Parking is a big problem. Park is relatively "downtown" and I don't think people are ready to come downtown
- 6 If the museum doesn't see any potential for the park, I think the city should use the park for future development. Either the city build on it or sell it to be developed. make sure it doesn't go idle
- 7 Using the park for parking would help to get the transients out of the area where people coming to the city could have a better first impression of the city.
- 8 Where will the homeless move if the park becomes unavailable to them? They are already at 9th and Ute and at Hawthorne Park. Probably at others too. If the homeless problem can be
- 9 Results of this study should not be used because none of the options included estimated cost.
- 10 Until the problem of vagrants in the park is solved, nothing the city does will make the park a viable option for the community. If the city decided to build a community recreation center, this
- 11 Traffic patterns are the worst problem for the park ----- it's just in the wrong place now. Parking for G.J.P.D. and the Museum makes the most sense to me. But again, there would be a
- 12 Why don't you run a survey of how well Charter customers feel about the service they are getting since you contracted them? Ask how many people would prefer a 1 year contract renewal, etc.
- 13 Perhaps, I am reading too much into this effort. Nevertheless, it seems as if this is the response to the inability/unwillingness to control the vagrant problem in the park. At sometime, the City
- 14 In order for the park to be a success, the first order of business is to move the existing people out of the area. You cannot expect anyone to want to use a park when it is filled with vagrants. I
- 15 Clean it up. Try to move the transients
- 16 The issue of transients / homeless people needs to seriously addressed. Otherwise, the city will just be investing time and money to make a nicer park for them. I do not feel comfortable or safe
- 17 Would love to see this park reclaimed as a place to picnic. Holiday Gatherings, Strolling. A true urban park for everyone not for the homeless. We own property downtown and I would never walk
- 18 Bigger issue is public safety of current park that deters use by general public
- 19 Afraid to use Whitman Park.....we do not go there ever. Turning it into a parking lot might be a good thing.
- 20 A safe place for food truck Fridays would be awesome and this would be a great park for it!
- 21 Parks are usually a benefit to the surrounding neighborhood but Whitman is a detriment. Whitman park neighbors do not benefit from the park setting as they are all commercial, civic, or
- 22 The situation with the traffic makes this a not very usable space. It's green and it's pretty.
- 23 The main objective should be to eliminate the loitering in this park. When I think of a park, I think of family friendly and a great place to take your kids to play. I would never dream of taking my
- 24 Ms. Sam; You will notice, I did not answer a couple of the pages simply, because there wasn't a choice there, that I could make. First of all, IMO, nothing good will come of this until the problem
- 25 This park is developed but nobody wants to use it because it is always full of vagrants. Not the place you want to take the family to for an outing. On the sale of the property I put no. That is not
- 26 Put the kid-friendly, interactive fountain (like the one you shut down on Main Street) in Whitman park! Purchase a big sculpture from local "found art" artist Lyle Nichols in Palisade for display in
- 27 Can't have too much park space.
- 28 The biggest improvement that was made to the park was when the bushes and trees were trimmed back so that the park could be visually monitored.
- 29 Due to location and size, I think this park is low priority.
- 30 open more atv trails
- 31 Matchette park is just fine the way it is. I use it on a regular basis, and I use it because I like it the way it is. If Matchette park gets developed I will use it less.
- 32 If parking isn't provided, it's hard to see how anything else works.
- 33 The historical significance of the park should be considered in making decisions.

- 34 Traffic circles should be eliminated. They are dangerous!
- 35 We need our open spaces and parks BUT that park has limited use by tax-paying individuals. It is historical and adjacent to our Museum of Western Colorado. It is a shame that tourists and tax-36 This city park has been neglected for years.
- 37 If you could sell the property to a private business then there would be more tax revenue for the downtown.
- 38 Whitman Park has become a home for vagrants and it's an eye sore. The City should not allow it to be.
- 39 I believe a healthy downtown atmosphere that is family friendly as currently exists on main street is key to keeping this area attractive and safe for residents. South of main it feels less safe at40 With the high volume of traffic on all four sides of the park and lack of parking, it is foolish to think of any improvement that would significantly increase the number of users. All this is an effort41 Whitman park is worthless in its present state, going so far as to add to the crime and drug problems. The park should be razed along with the entire block west of Whitman to Pitkin Ave in front42 Where will the "loiterers" go? It seems to me that's the part of the issue not addressed.
- 43 Some of the listed ideas for the park are great, but I can't envision them working until the homeless people loitering situation is resolved. The loitering and panhandling in Grand Junction gives a44 The location of Whitman, being flanked on all sides by busy streets makes it impractical for any actual park activity ...too dangerous for children or dog play, or adults running after balls, etc. It45 The city should use the park space instead of allowing the homeless to use it as the center for their begging business. Make sure that whatever is done doesn't result in the homeless moving to46 Which park will they relocate to? In my opinion, by redesignating Whitman to other uses, you are just setting up another park to become the future favorite loitering location. Do you have a47 Put your resources on Machett Park and make it mostly trails and trees for walking.
- 48 Up grading Whitman park will not address the homeless problem. I feel resources should be used elsewhere, as Whitman park is not in a very desirable or easily accessed area of town.
- 49 I would go for a trade of property if a better location or better possibilities would be in the trade.
- 50 anxious to see Matchett park started.
- 51 Is it possible to make this survey more confusing and complicated? Probably the worst format I have ever seen.
- 52 First let me clarify that I have a problem with the premise of this questionnaire. I see loitering as a main purpose of a park. If you want to complain that burns hang out there then you need to53 We need to have some sort of a resolution to the homeless problem. My family is not comfortable using the park as it is now occupied by large numbers of homeless.
- 54 I think it would be a good idea to partner as much as possible with the existing museum. It seems that there are some common interests, and with the close proximity of the two entities it would55 This park is located between really busy streets. Some of the proposed uses may pose safety concerns. This is somewhat of a gateway spot for downtown. Changing the use to some of the56 As an amateur local historian I would be unforgiving if the city chose to sale, reduce or lease this historic property. The fact that none of the four corner parks (Emerson, Washington, Hawthorne57 The two references to privatizing/long-term leases are a little confusing. I would support long-term leasing to a private recreation operator for PART of the park, because it could privatize58 I think the one way system on Ute and Pitkin should move one street south and connect Whitman Park with Museum Property, close Ute between 5th and 4th streets and adding parking there59 While I would love to see the backside of the burns, I think that, in this day and age of correctness, we are stuck with them. I do wish that you would repaint the little blue room a different color.
- 60 Something needs to be done to re-invigorate that area and making the park an safer, healthier area would do just that. What ever is done, we need to recognize that there is a situation there61 Most importantly is to get rid of the panhandlers and improve the overall looks of the park. For people passing through the city and seeing this is just downright wrong and sends the wrong62 The park is unusable by the rest of the population because of the vagrants. The vagrants have to go somewhere and tend to be in that area because of the services near by. We need to be63 GI is currently struggling to maintain and upkeep their existing parks. Expansion of new facilities should happen ONLY when we are able to keep or improve existing amenities and facilities in64 Just getting the vagrants out of this park will help it tremendously. No one will use this park while a bunch of burns and alcoholics are sitting around there. It is such a beautiful park with shade65 every possible use/improvements has to consider, initially, if improvements will be used by residents other than homeless. If not, I opt for no changes to Whitman; spend time and resources on66 This is a highly visible area in the city. I think it reflects badly for visitors to our city when they pass through and see the park as it is currently. I have heard numerous poor comments about