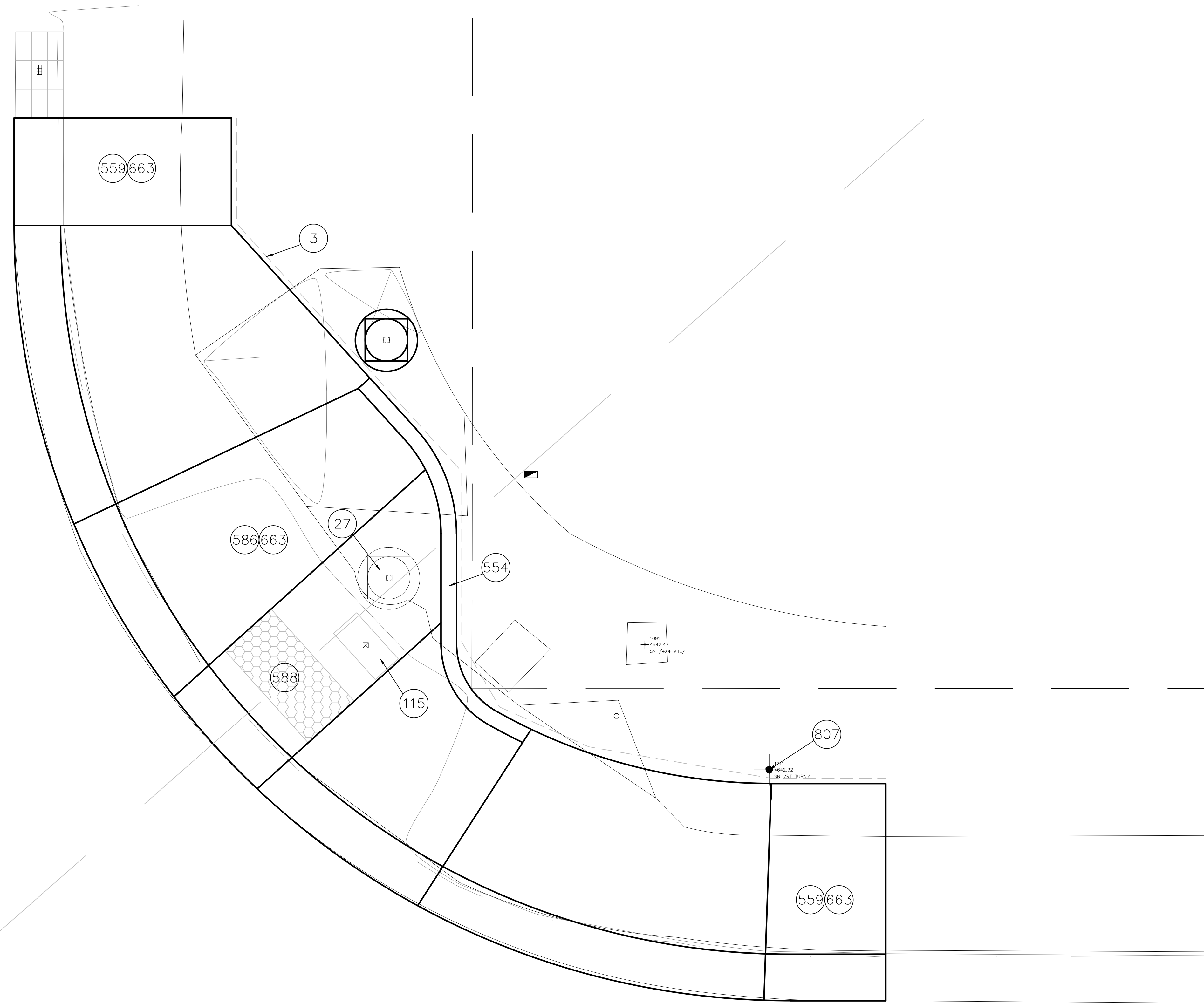


12TH STREET



PROJECT NO. _____

- 3 202 - REMOVAL OF CONCRETE. SAW CUT AND REMOVE CONCRETE AS SHOWN. INCLUDES BUT NOT LIMITED TO CURB, GUTTER, SIDEWALK, DRIVEWAY, SLABS, V-PAN, CURB RAMPS, INTERSECTION CORNERS, APRONS, AND LANDSCAPE BORDERS.
- 27 202 - REMOVE TRAFFIC SIGNAL POLE BASE (REMOVE TOP 12" OF BASE AND BOLTS. FILL HOLE WITH CLASS 6 AGGREGATE BASE COURSE.)
- 115 210 - ADJUST TRAFFIC PULLBOX TO FINISHED GRADE.
- 554 608.06 - CONCRETE CURB (6" WIDE, HEIGHT VARIES) CURB SHALL BE POURED MONOLITHIC WITH RAMP
- 559 608.06 - MONOLITHIC VERTICAL CURB, GUTTER AND SIDEWALK (7' WIDE)
- 586 608.06 - CONCRETE CURB RAMP
- 588 608.06 - DETECTABLE WARNING
- 663 304 - AGGREGATE BASE COURSE (CLASS 6) (6" THICK)
- 807 PROTECT SIGN.

ORCHARD AVENUE

REVISION	DESCRIPTION	DATE	DRAWN BY	DATE
REVISION			JKT	5/2015
REVISION				
REVISION				
REVISION				

SCALE
N.T.S.



PUBLIC WORKS
AND UTILITIES
ENGINEERING DIVISION

12TH AND ORCHARD REPAIRS

N:\landproj\2015 C & SW\DWG\12th and Orchard.dwg, 7/15/2015 1:45:38 PM