

*Atterson*

1. Population estimates existing and estimated to 1978.

	<u>Permanent Resident Pop.</u>
January 1976	26,500
January 1977	29,500
January 1978	32,000

2. Permanent and transient population estimates for June 1, 1976.

a) Permanent Resident Population	28,250
b) Temporary Resident Population	<u>1,980</u>
TOTAL RESIDENT POPULATION	30,230
c) Number of Mesa County Residents entering Grand Junction for work or personal business	15,180
d) Number of transients entering Grand Junction.	<u>7,890</u>
TOTAL DAYTIME POPULATION	53,300

3. Existing street mileage within Grand Junction City limits.

a) End December 1974	116.58 mi.
b) Added during 1975	<u>1.89 mi.</u>
TOTAL END DECEMBER 1975	118.47 mi.

---

---

# Projected Population 1978

37,000

35,000

33,000

31,000

29,000

27,000

25,000

JANUARY  
1976

JUNE  
1976

JANUARY  
1977

JUNE  
1977

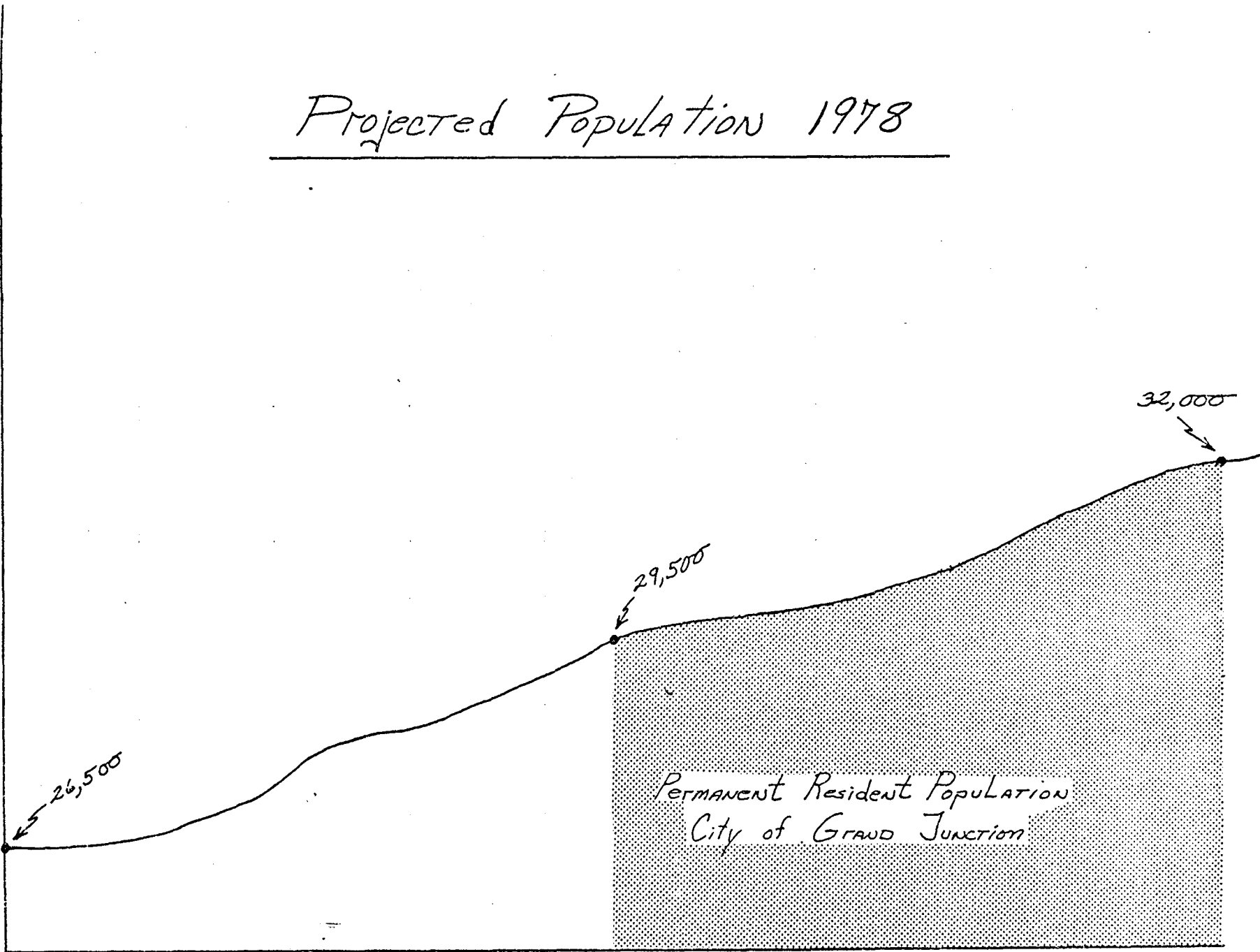
JANUARY  
1978

26,500

29,500

32,000

PERMANENT RESIDENT POPULATION  
CITY OF GRAND JUNCTION



4. Number of new sewer and water taps issued by the City of Grand Junction.

	MONTH	Number of Sewer Taps Issued	Number of Water Taps Issued
1975	January	2	2
	February	8	9
	March	7	3
	April	5	11
	May	30	8
	June	13	15
	July	18	7
	August	12	39
	September	27	16
	October	21	10
	November	21	6
	December	32	6
1976	January	1	6
	February	8	5
	March	23	10
	April	23	24
	May	10	18

Total taps since  
January 1975

261

195

5. Future Development in existing city limits.

The following data is based on maximum possible development, under present zoning, of those areas, within the city limits of Grand Junction, which are presently not developed.

	Area Name or Location*	Number of Acres	Present Zone	Number Projected Units
Residential	Bookcliff Enclave	20	R-3	400
	Brodak Enclave	65	PD-8	280
	Spring Valley Area	200	R-1-B	430
	El Corona Bulk	5	R-1-B	20
	Orchard Ave. Annex	50	R-2-A	210
	Lakeside	5	PD-12	88
	Lamplight Park	35	R-1-C	74
				1,502
Bus./Comm.	Area A	40	C-1	100
	Area B	40a	C-1	100
		10a	C-2	25
		10a	I-1	10
	Area C	20a	I-2	10
				145

\*See accompanying map for location of areas

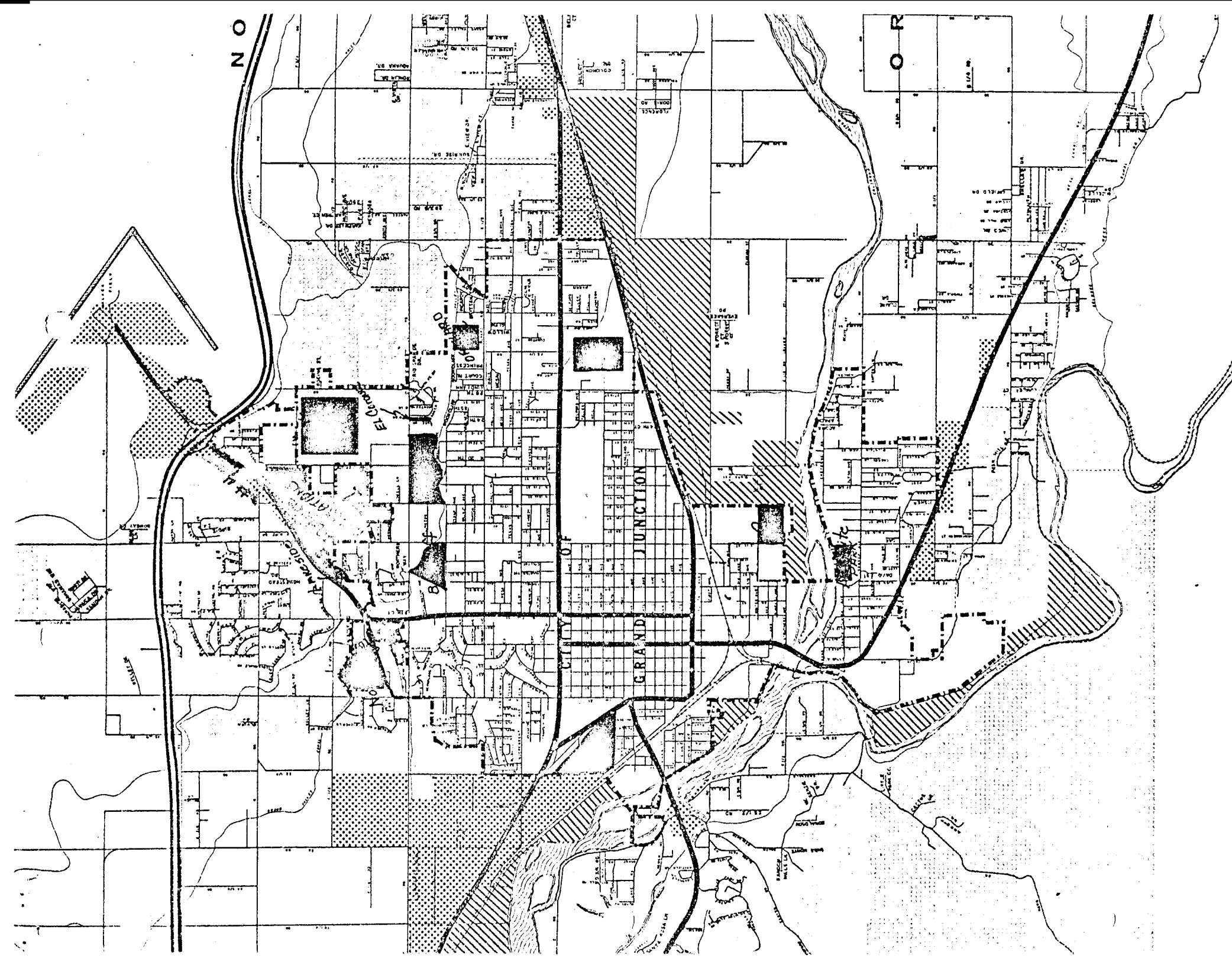
6. Potential Annexations and present city size.

a) Total area presently within city limits 5,797.50 acres  
9.05 sq. miles

b) Potential Annexations (see map)

- (1) Between 12th St. to 27 1/2 Road from F 1/2 to Horizon Drive
- (2) Enclave existing west of 7th St. and North of Patterson Road
- (3) Between Horizon Drive and 12th St. North of F 1/2 Road
- (4) Between Horizon Drive and the County Club from G Road to I-70

The approximate total acreage of the above potential annexations is 260.00 acres



COMPARISON OF LICENSE LATE SALES

Type	1974 Ending February	1975 Ending February	1976 Ending February
Passengers	21,983	26,925	28,165
Rentals	354	310	
Trucks	7,844	9,936	10,252
Lrg Trucks	646	793	858
Rec. Trks	35	295	471
Farm Trks	1,327	1,347	1,490
Tractors	239	235	222
Farm Tractors	21	21	21
Trailers	3,238	4,048	4,553
Mobile Homes	225	188	982
Motorcycles	818	1,081	1,124
SME	379	394	438
Dealers	419	506	543
Mtcy Dealers	9	15	17
Metro	28	34	36
Radio Ham Op	24	13	19
Handicap		4	4
Tab	240	246	242
	37,829	46,391	49,437

Type	1974 Ending April 30	1975 Ending April	1976 Ending April 30
Passengers	27,567	29,576	32,319
Rentals	417	441	721
Trucks	10,299	11,196	12,080
Lrg Trucks	848	917	962
Rec. Trucks	72	361	577
Farm Trucks	1,678	1,631	1,681
Tractors	345	281	255
Farm Tractors	24	25	18
Trailers	4,708	5,162	5,936
Mob Homes	343	244	2,891
Motorcycles	1,809	1,744	1,826
SME	452	516	523
Dealers	545	539	564
Mtcy Dealers	18	15	18
Metro	42	35	43
Radio Ham OP	29	29	29
Tab (Z)	275	331	276
Handicap	4	4	8
	49,475	53,047	60,006

Accumulating Totals

February

May

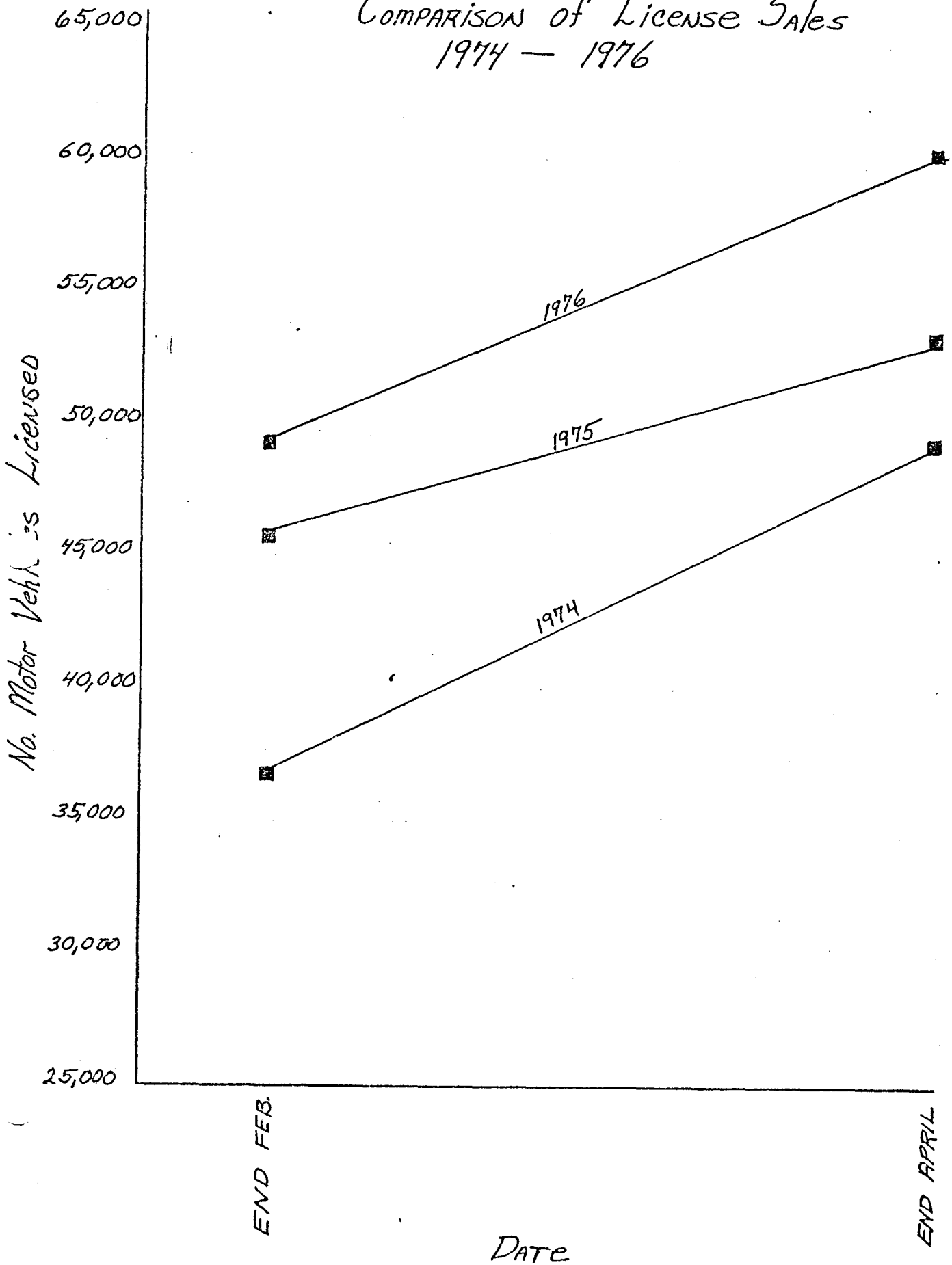
March

June

Type	1975	1976	1975	1976	1975	1976
	January	January	February	February	March	March
A-Passengers	15,688	15,344	26,925	28,165	28,655	31,209
Rentals	76		310		441	
B-Trucks	5,336	5,257	9,936	10,252	10,732	11,548
D-Lrg Trucks	387	400	793	858	864	928
E-Rec Trks	146	208	295	471	334	551
F-Farm Trks	682	858	1,447	1,490	1,560	1,681
G-Trac	103	77	235	222	259	244
I-Farm Trac	19	16	21	21	25	24
H-Handicap	3		4	4	4	4
J-Trailers	2,459	2,701	4,048	4,553	4,649	5,303
K-Mob Homes	115		118		215	
M-Motorcycles	587	619	1,081	1,124	1,462	1,504
O-SME	216	240	394	442	465	496
P-Dealers	274	234	506	543	525	564
Q-Mtcy Dlrs	7	7	15	17	15	17
R-Metro	10	15	34	36	34	40
T-Ham Op	10	13	13	19	29	29
Z-Tabs	93	119	212	242	231	261
K-S-Lrg Mob Homes		26	34	1,106	47	1,794
Totals	26,211	26,134	46,191	49,568	50,546	56,197

21 Type	April 1975	April 1976	May 1975	May 1976	June 1975	June 1976
A-Passengers	29,576	32,319	30,387	33,086	31,099	
Rentals	441		441		441	
C-Trucks	11,196	12,080	11,547	12,437	11,838	
D-Lrg Trks	917	962	941	987	972	
E-Rec Trks	361	577	384	599	409	
<del>EXTREME</del> F-Farm	1,631	1,750	1,688	1,795	1,721	
G-Tractors	281	255	290	271	298	
H-Handicap	4	8	4	4	4	
I-Farm Trac	25	24	25	26	25	
J-Trailers	5,162	5,936	5,726	6,476	6,191	
K-Mob Homes	244		260		274	
M-Motcys	1,744	1,826	2,014	2,088	2,239	
O-SME	516	523	542	536	554	
P-Dealers	539	564	544	592	548	
Q-Mtcy Dlrs	15	18	18	18	18	
R-Metro	39	43	39	44	40	
T-Ham Op	29	29	29	29	30	
Z-Tabs	283	276	299	278	300	
K-S-Lrg Mob Homes		2,891		3,081		
TOTALS	53,003	60,081	55,178	62,347	57,001	

# COMPARISON of License Sales 1974 - 1976

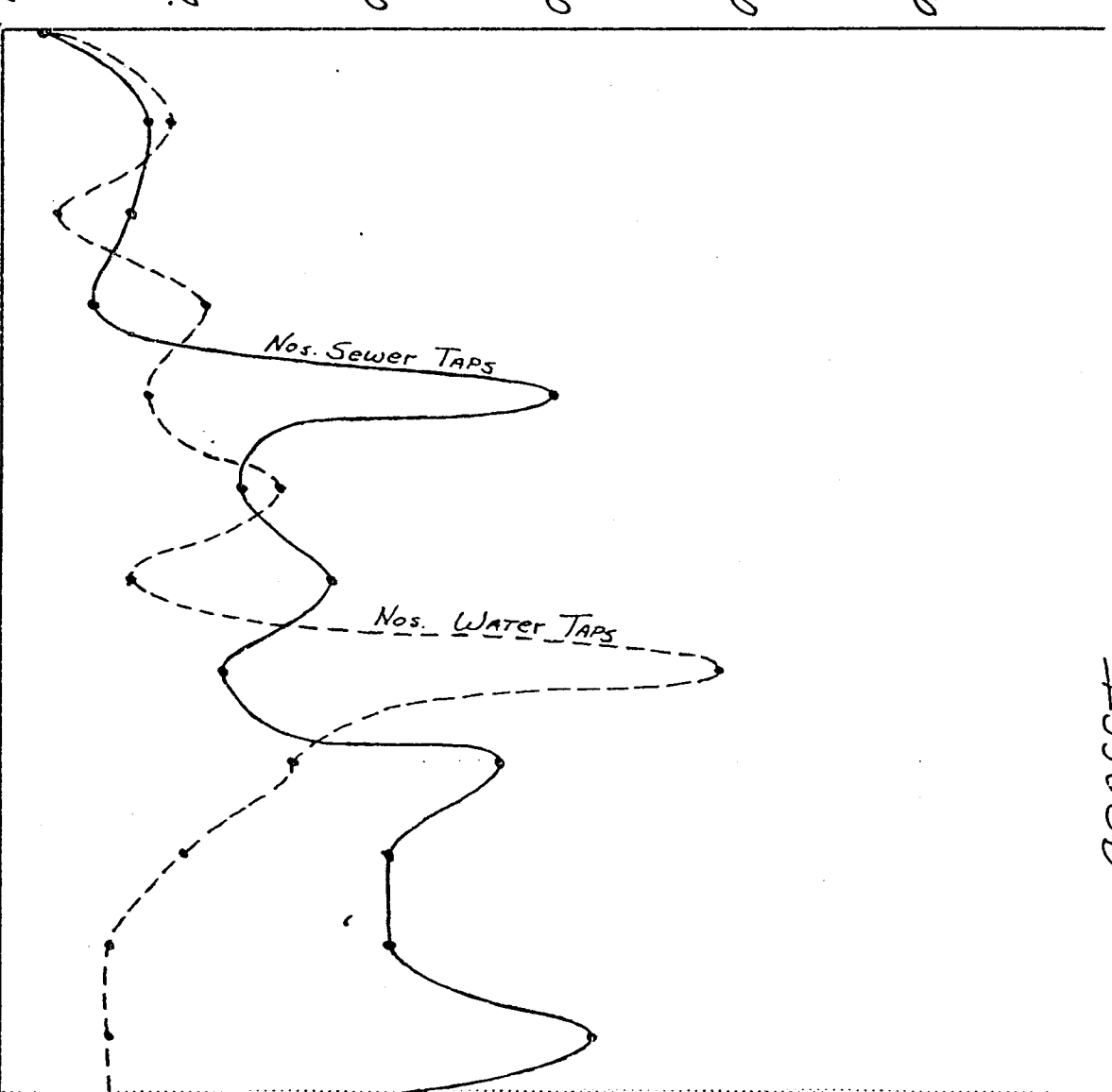




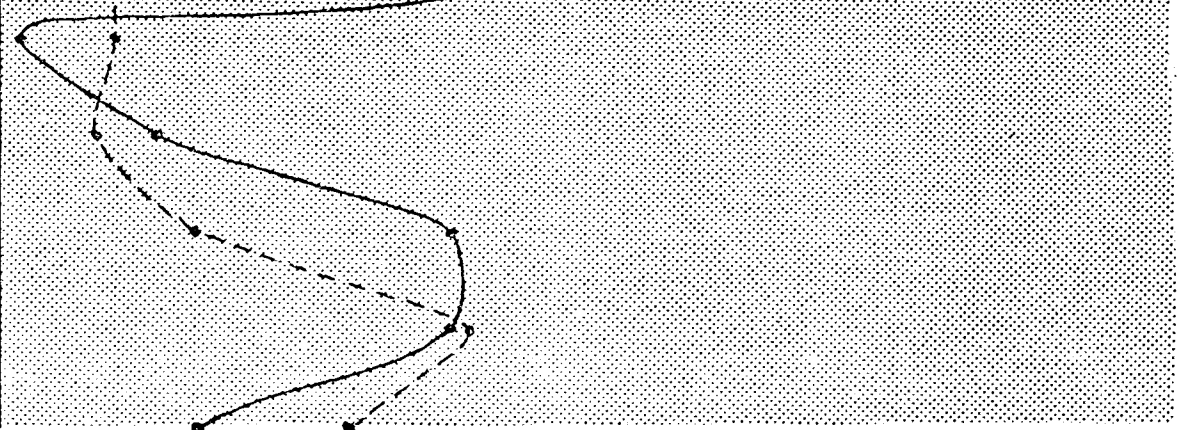
# # Permits Issued / Month

0 10 20 30 40 50

1975  
JANUARY  
FEBRUARY  
MARCH  
APRIL  
MAY  
JUNE  
JULY  
AUGUST  
September  
October  
November  
December  
1975



1976  
JANUARY  
FEBRUARY  
MARCH  
APRIL  
MAY



Sewer & Water Tap Permits  
Issued