

ARCHITECTURAL DESCRIPTION: Apartment building, two stories with flat parapet roof. Exposed concrete foundation. Concrete steps with stepped concrete piers and coping lead up to inset entrance. Shed roof canopy roofed with red tiles, with exposed rafter ends in center of facade. French main door framed by side lights with French style muntins. Windows around building are singles and pairs, double hung, wood sash, four vertical lights over one. Entry and central windows in second story are flanked by pilasters. They rise full height to a round arch-shaped parapet. On east and west sides of facade, the parapet is cut through by projecting shed roofs over the windows. The roofs have red Spanish tiles and exposed rafter ends. Building is faced with rough stucco painted beige. Window frames and sills, main door and lights, parapet coping, coping on piers is red.
 Sprawling shrubs and tall evergreens across facade. Red lava rock in raised beds on either side of central walk. Graveled yard near street.

PHOTOGRAPHS (include photographs showing each side of building and any associated buildings)

Film roll no.: 26
 Negative no.: 14

Photographer: Carolyn Howard
 Location of negatives: City Of Grand Junction

CONSTRUCTION HISTORY (include description and dates of major additions, alterations, or demolitions): The "A" on the name La Questa on the facade has disappeared. Additional construction or modifications not noted in Assessor's records.

HISTORICAL BACKGROUND (discuss important persons and events associated with this building): Since its construction ca. 1925-1950, this four unit apartment was owned by Genevieve and John W. Lang. They were absentee owners with a variety of tenants until ca. 1937 when Genevieve, then a widow, became an occupant. By ca. 1946, the residence was advertised as the "La Questa Apartments."

INFORMATION SOURCES (be specific): Plat Map, Appraisal Card, Lot and Block Books, Grand Junction City Directories.

SIGNIFICANCE (check appropriate categories)

Architectural significance:
 represents the work of a master
 possess high artistic value
 represents a type, period, or method of construction

Historical significance:
 associated with significant person(s)
 associated with significant event
 associated with a pattern of events
 contributes to an historic district

National Register eligibility:
 Individual yes no
 Criteria: A B C D
 Area(s) of significance: Architecture

Contributes to a potential district:
 yes no
 District name:

Period of significance: 1925

THEME(S):

STATEMENT OF SIGNIFICANCE (briefly justify the significance checked above): The 1920s interest in Spanish styles influences the facade of this 1925 apartment building. It retains its original appearance. Although not eligible for the National Register, this house may contribute to a local register.

INVENTORY COMPLETED BY: Museum Group Staff

DATE: 3/29/96

AFFILIATION: Museum of Western Colorado

PHONE: (970) 241-9117

ADDRESS: PO Box 20000-5020, Grand Junction, Colorado 81502-5020

PROJECT NAME: Grand Junction Historic Resources Survey, Phase 2



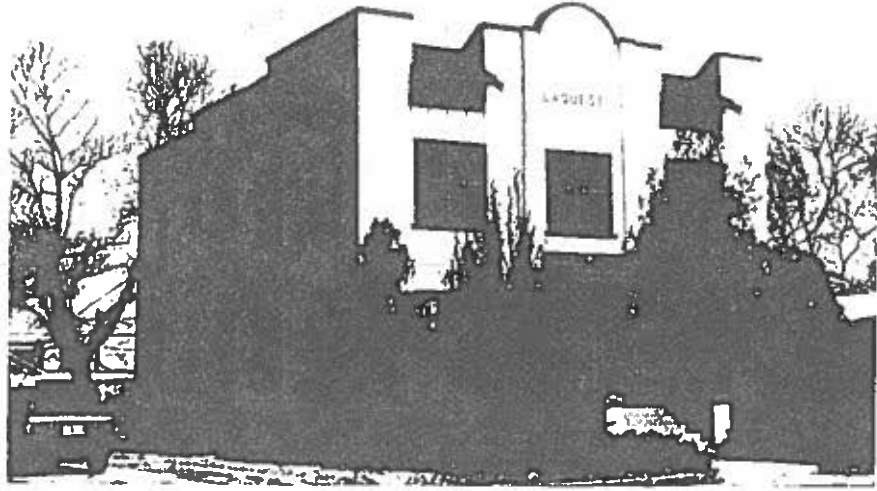
350 Gunnison Ave., Grand Junction, Mesa Co, CO

2945-142-22-009

02/06/1996

Roll 26 Frame 14 View N Dir NE

SME 8288



350 Gunnison Ave., Grand Junction, Mesa Co, CO
2945-142-22-009 02/06/1996
Roll 26 Frame 14 View N Dir NE

SME 8288