



**ARCHITECTURAL DESCRIPTION:** One story with gable front and wing. Concrete front steps and stoop lead to small entry porch integral in west side of front wing, and paneled front door. Windows are double hung wood sash, eight-over-eight. Stucco siding, concrete foundation and steps, are painted white. Window and door surrounds, plank window shutters, and gable cornices are blue. Gray composition shingle roof with brick chimney on north slope. Landscaped with lawn and large elm on west lawn. Ash and small maple on parking area. Garage at rear, ca. 1944, with drop siding, front gable, and aluminum garage door.

**PHOTOGRAPHS (include photographs showing each side of building and any associated buildings)**

Film roll no.: 7  
Negative no.: 15

Photographer: Carolyn Howard  
Location of negatives: City Of Grand Junction

**CONSTRUCTION HISTORY (include description and dates of major additions, alterations, or demolitions):** Metal frame windows and door. Additional construction or modifications not noted in Assessor's Records.

**HISTORICAL BACKGROUND (discuss important persons and events associated with this building):** Occupied by Clyde S. Clodfelter, an observer for the U.S. Weather Bureau from 1945-1946.

**INFORMATION SOURCES (be specific):** Appraisal Card, Ownership Card, Lot and Block Books, Grand Junction City Directories.

**SIGNIFICANCE (check appropriate categories)**

**Architectural significance:**

represents the work of a master

possess high artistic value

represents a type, period, or method of construction

**National Register eligibility:**

Individual  yes  no

Criteria:  A  B  C  D

Area(s) of significance: Architecture

Period of significance: 1944

**Historical significance:**

associated with significant person(s)

associated with significant event

associated with a pattern of events

contributes to an historic district

**Contributes to a potential district:**

yes no

District name:

**THEME(s):**

**STATEMENT OF SIGNIFICANCE (briefly justify the significance checked above):** This Minimal Traditional style house is one of many in this area. Although not eligible for the National Register, this house may contribute to a local register.

**INVENTORY COMPLETED BY:** Museum Group Staff

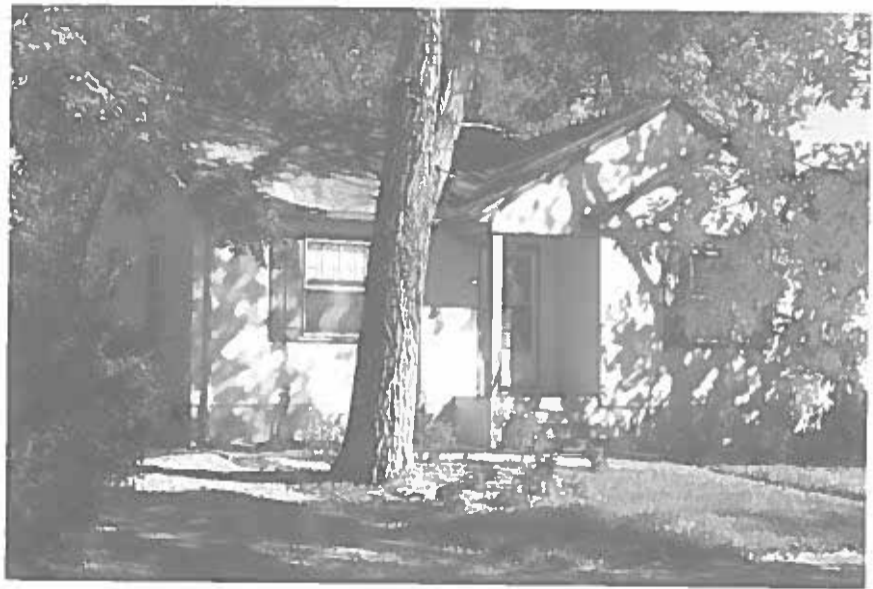
**DATE:** 2/14/96

**AFFILIATION:** Museum of Western Colorado

**PHONE:** (970) 241-9117

**ADDRESS:** PO Box 20000-5020, Grand Junction, Colorado 81502-5020

**PROJECT NAME:** Grand Junction Historic Resources Survey, Phase 2



1410 White Ave.  
Grand Junction, Mesa Co, CO  
2945-133-02-017  
5ME7509

10/05/1995  
Roll 7 Frame 15  
View S Dir N/NE  
5ME7509