

ARCHITECTURAL DESCRIPTION: Two story, hip roof with deck and cross gables. Mud sill foundation skirted with siding. Concrete steps and stoop with wrought iron railing. Red brick soldier risers on steps and stoop. Small porch on east facade with gabled portico and full length columns on both corners. A settle on east and west sides of porch. Arched, paneled front door with small light and sidelights. Windows are double hung, one-over-one. Louvered shutters on facade and on some windows on west and east elevations. First floor facade window is transom. Cutaway bay on east elevation. White drop siding with white trim and red shutters and red settles. Red composition shingle roof. Pedimented gables with kick on south, west and east have white fishscale wood shingles. South gable has Palladian window. Outside wood stair on east elevation leads to upstairs apartment. Shed roof portico at top of stairs with flush door.

Front walk in a sweeping curve. Landscaped with lawn and a cedar tree at each end of facade. Two elm trees in parking area.

PHOTOGRAPHS (include photographs showing each side of building and any associated buildings)

Film roll no.: 12
 Negative no.: 22

Photographer: Carolyn Howard
 Location of negatives: City Of Grand Junction

CONSTRUCTION HISTORY (include description and dates of major additions, alterations, or demolitions): Doors, steps, stairs on east elevation. Additional construction or modifications not noted in Assessor's Records.

HISTORICAL BACKGROUND (discuss important persons and events associated with this building): Owned from ca. 1910 through 1920 by Gilbert, and after his death in 1911, by wife Anna Rupp. From 1921 through 1932, it was owned and lived in for a time by Fred and Agnes Holmes. Fred Holmes was manager of Holy Sugar. After 1932, it went through a series of owners and rental tenants.

INFORMATION SOURCES (be specific): Plat Map, Appraisal Card, Lot and Block Books, Grand Junction City Directories.

SIGNIFICANCE (check appropriate categories)

Architectural significance:
 represents the work of a master
 possess high artistic value
 represents a type, period, or method of construction

Historical significance:
 associated with significant person(s)
 associated with significant event
 associated with a pattern of events
 contributes to an historic district

National Register eligibility:
 Individual yes no
 Criteria: A B C D
 Area(s) of significance: Architecture

Contributes to a potential district:
 yes no
 District name:

Period of significance: 1900

THEME(S):

STATEMENT OF SIGNIFICANCE (briefly justify the significance checked above): An Edwardian style house with a roof line noticeable for large gables. House entry remodeled in the 1930s with round arched door, brick steps, portico, and east stairway. Although not eligible for the National Register, this house may contribute to a local register.

INVENTORY COMPLETED BY: Museum Group Staff

DATE: 2/14/96

AFFILIATION: Museum of Western Colorado

PHONE: (970) 241-9117

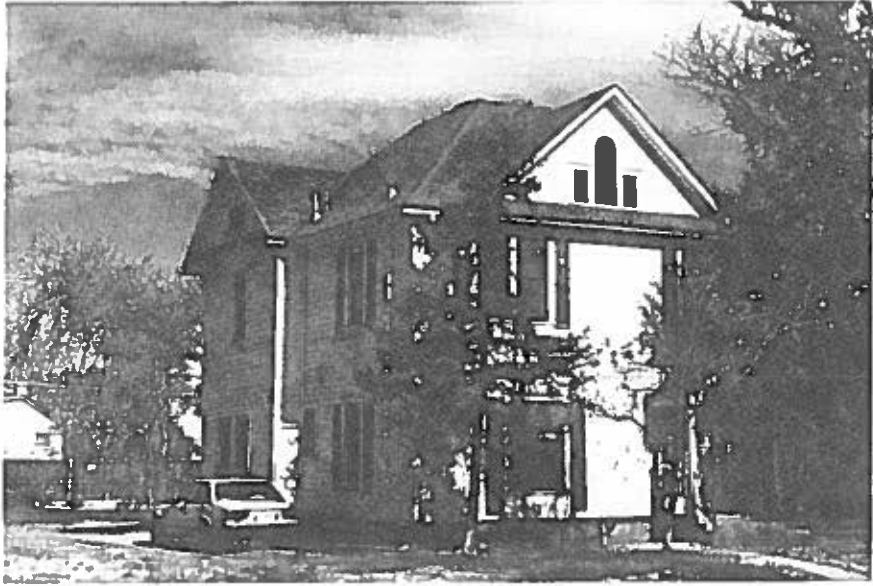
ADDRESS: PO Box 20000-5020, Grand Junction, Colorado 81502-5020

PROJECT NAME: Grand Junction Historic Resources Survey, Phase 2



1024 Main St.,
Grand Junction, Mesa Co, CO
2945-144-14-011
5ME7693

11/07/1995
Roll 12 Frame 22
View S Dir NE
5ME7693



1024 Main St.,
Grand Junction, Mesa Co, CO
2945-144-14-011
5ME7693

11/07/1995
Roll 12 Frame 22
View S Dir NE
5ME7693