

ARCHITECTURAL DESCRIPTION: One story, hip roof with front gable. Concrete block foundation. Concrete steps lead up to gabled screened front porch across 7/8 of facade. Half-wall with siding. Four half columns with siding across porch facade. Screen door. Latticework on porch foundation. Flush front door with three diagonal lights. Windows are double hung wood sash, one-over-one. Projecting bay window on west elevation under the flared eave. White drop siding with black windows surrounds and knees braces on front gables. Gray composition shingle roof with flared eaves. Front gable has ribbon of three small windows. Exposed rafter ends and bargeboard ends and knee braces are all elaborately shaped. One brick chimney on ridge. Another brick chimney on north slope.

Landscaped with lawn and planters with hedges and forsythia across porch. Roses along east lawn edge. Hedge across west lawn edge. Garage with front gable, gray composition shingle roof, vertical board siding, and swinging batten doors.

PHOTOGRAPHS (include photographs showing each side of building and any associated buildings)

Film roll no.: 13
Negative no.: 20

Photographer: Carolyn Howard
Location of negatives: City Of Grand Junction

CONSTRUCTION HISTORY (include description and dates of major additions, alterations, or demolitions): Additional construction or modifications not noted in Assessor's Records.

HISTORICAL BACKGROUND (discuss important persons and events associated with this building): First owned by John M. and Emma Porter in 1910. The house went through a succession of absentee owners and tenants from 1915 until 1920 when it was occupied by Reuben and Cornelia Wiler. Mr. Wiler was a fireman and engineer for the Denver and Rio Grande Western Railroad. He passed away in 1941 and Cornelia lived there at least through 1946.

INFORMATION SOURCES (be specific): Plat Map, Appraisal Card, Lot and Block Books, Grand Junction City Directories.

SIGNIFICANCE (check appropriate categories)

Architectural significance:
 represents the work of a master
 possess high artistic value
 represents a type, period, or method of construction

Historical significance:
 associated with significant person(s)
 associated with significant event
 associated with a pattern of events
 contributes to an historic district

National Register eligibility:
 Individual yes no
 Criteria: A B C D
 Area(s) of significance: Architecture

Contributes to a potential district:
 yes no
 District name:

Period of significance: 1905

THEME(S):

STATEMENT OF SIGNIFICANCE (briefly justify the significance checked above): The roof of this house is particularly detailed, with flared eaves, and exposed rafter ends and barge board tails cut in deep patterns. Knee braces under the front eaves are also elaborately cut. Although not eligible for the National Register, this house may contribute to a local register.

INVENTORY COMPLETED BY: Museum Group Staff

DATE: 2/14/96

AFFILIATION: Museum of Western Colorado

PHONE: (970) 241-9117

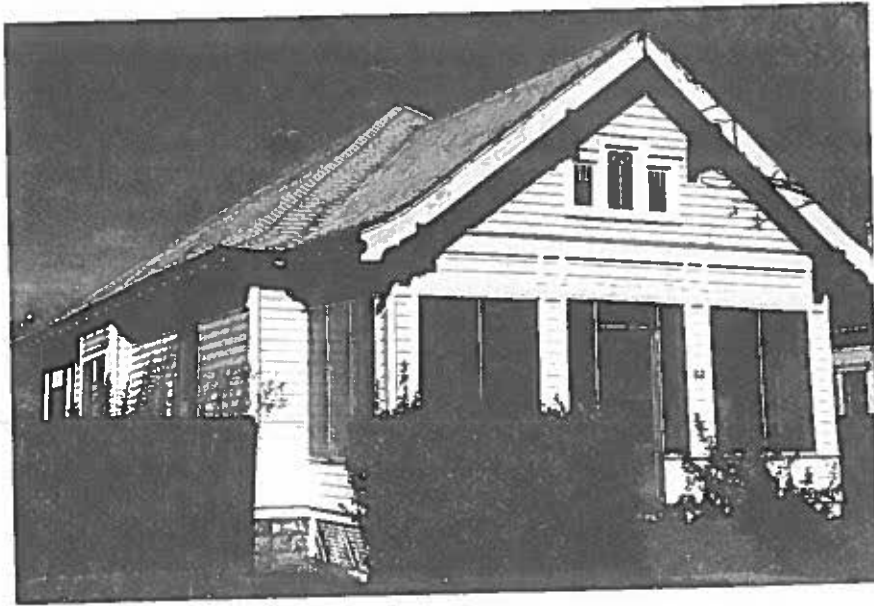
ADDRESS: PO Box 20000-5020, Grand Junction, Colorado 81502-5020

PROJECT NAME: Grand Junction Historic Resources Survey, Phase 2



812 Ute Ave.,
Grand Junction, Mesa Co, CO
2945-144-28-011
SME7712

11/07/1995
Roll 13 Frame 20
View S Dir N/NE
SME7712



812 Ute Ave.,
Grand Junction, Mesa Co, CO
2945-144-28-011
SME7712