

ARCHITECTURAL DESCRIPTION: One story with side gable. Battered foundation. Concrete steps with wire cut brick piers. Concrete coping on piers with two ornamental concrete classic urns on piers. Sunporch/entry extends full width of facade under extended shed roof. Porch is glazed with ribbons of large single pane lights on all three sides of porch with 4 x 4 mullions. Siding on half-walls. Squared columns flank the door and are on front corners. Front door is paneled with three vertical lights. Windows around the house have been replaced with large, fixed pane, single lights like the porch. Projecting bay window with shed roof on south elevation. Light gray false bevel siding. Door and window surrounds, corner boards and knee braces under eaves are white. Composition shingle roof with exposed rafters and knee braces under eaves. Brick chimney on east slope.

Minimal lawn is edged by concrete curbing with a low white picket fence along curb. Trellis with silverface vine on south elevation of sunporch.

Two car garage at rear with battered foundation, false bevel siding, composition shingle roof with flared eaves, one large double hung window and five small windows, paneled side door and contemporary metal garage door.

PHOTOGRAPHS (include photographs showing each side of building and any associated buildings)

Film roll no.: 14
Negative no.: 7

Photographer: Carolyn Howard
Location of negatives: City Of Grand Junction

CONSTRUCTION HISTORY (include description and dates of major additions, alterations, or demolitions): Windows have been replaced. Additional construction or modifications not noted in Assessor's Records.

HISTORICAL BACKGROUND (discuss important persons and events associated with this building): Home to Hugh E. Colescott, one of Grand Junction's small grocery owners from 1930 through 1946. Prior to that, it was home to John A. Dixon, a plumber, from 1918 to 1930. It was first purchased by James H. Rankin in 1915.

INFORMATION SOURCES (be specific): Plat Map, Appraisal Card, Lot and Block Books, Grand Junction City Directories.

SIGNIFICANCE (check appropriate categories)

Architectural significance:
 represents the work of a master
 possess high artistic value
 represents a type, period, or method of construction

Historical significance:
 associated with significant person(s)
 associated with significant event
 associated with a pattern of events
 contributes to an historic district

National Register eligibility:
 Individual yes no
 Criteria: A B C D
 Area(s) of significance: Architecture

Contributes to a potential district:
yes no
 District name:

Period of significance: 1915

THEME(S):

STATEMENT OF SIGNIFICANCE (briefly justify the significance checked above): A long narrow Bungalow. The windows have been replaced with single lights, which are not appropriate. Although not eligible for the National Register, this house may contribute to a local register.

INVENTORY COMPLETED BY: Museum Group Staff

DATE: 2/14/96

AFFILIATION: Museum of Western Colorado

PHONE: (970) 241-9117

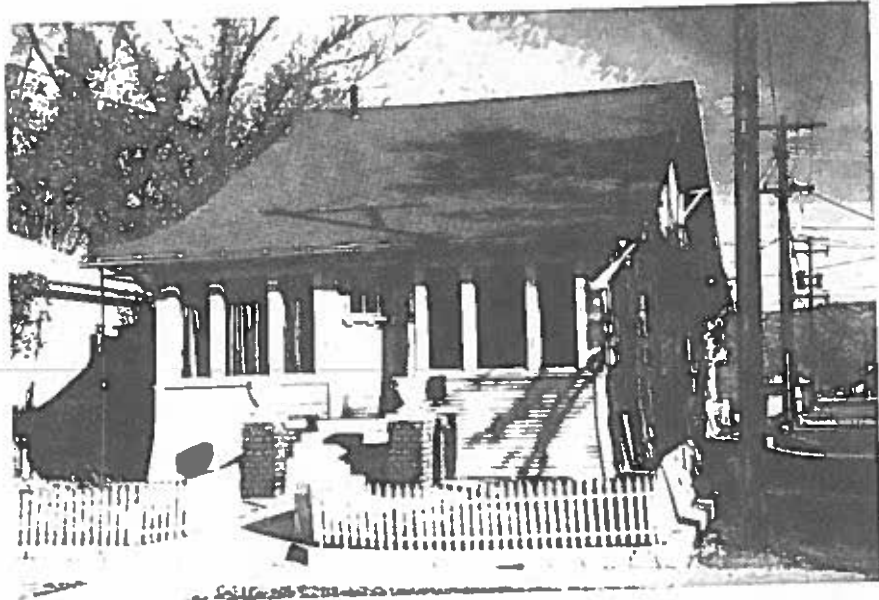
ADDRESS: PO Box 20000-5020, Grand Junction, Colorado 81502-5020

PROJECT NAME: Grand Junction Historic Resources Survey, Phase 2



318 S. 7th St.,
Grand Junction, Mesa Co, CO
2945-144-32-003
5ME7720

11/07/1995
Roll 14 Frame 7
View W Dir E/NE
5ME7720



318 S. 7th St.,
Grand Junction, Mesa Co, CO
2945-144-32-003
SME7720