

ARCHITECTURAL DESCRIPTION: One story with side gable roof and wing with gable on east half of facade. Wood steps with stoop and single iron rail lead up to entry with continuous shed roof in center of facade. Wood screen door. Front door is paneled with fan light. Majority of windows are double hung wood sash, six-over-one. Large fixed sash window with sixteen lights in facade. All windows have plank shutters and wood screens. Concrete basement windows with three lights. Tan false bevel wood siding. Gable of wing has tan vertical wood siding. Window frames and surrounds, shutters, basement, stoop and steps, screen and front door, raking cornice and cornice returns are brown. Gray composition shingle roof with eaves close to the wall. Brick chimney on south slope.

Lawn with two saplings and mature trees in front yard. Large bush near entrance. Backyard enclosed by low chain-link fence.

PHOTOGRAPHS (include photographs showing each side of building and any associated buildings)

Film roll no.: 29
Negative no.: 5

Photographer: Carolyn Howard
Location of negatives: City Of Grand Junction

CONSTRUCTION HISTORY (include description and dates of major additions, alterations, or demolitions): Additional construction or modifications not noted in Assessor's records.

HISTORICAL BACKGROUND (discuss important persons and events associated with this building): The first owners/occupants of the house, ca. 1941-1951, were Thelma and Eugene Bancroft. Eugene was a mechanic for the State Highway Department.

INFORMATION SOURCES (be specific): Plat Map, Appraisal Card, Lot and Block Books, Grand Junction City Directories.

SIGNIFICANCE (check appropriate categories)

Architectural significance:
 represents the work of a master
 possess high artistic value
 represents a type, period, or method of construction

Historical significance:
 associated with significant person(s)
 associated with significant event
 associated with a pattern of events
 contributes to an historic district

National Register eligibility:
Individual yes no
Criteria: A B C D
Area(s) of significance: Architecture

Contributes to a potential district:
 yes no
District name:

THEME(S):

Period of significance: 1941

STATEMENT OF SIGNIFICANCE (briefly justify the significance checked above): This house retains features of its era: a large multi-pane window, plank shutters and vertical gable siding. Although not eligible for the National Register, this house may contribute to a local register.

INVENTORY COMPLETED BY: Museum Group Staff

DATE: 5/31/86

AFFILIATION: Museum of Western Colorado

PHONE: (970) 241-9117

ADDRESS: PO Box 20000-5020, Grand Junction, Colorado 81502-5020

PROJECT NAME: Grand Junction Historic Resources Survey, Phase 2



THIS PAPER
MANUFACTURED
BY KODAK

THIS PAPER
MANUFACTURED
BY KODAK

THIS PAPER
MANUFACTURED
BY KODAK

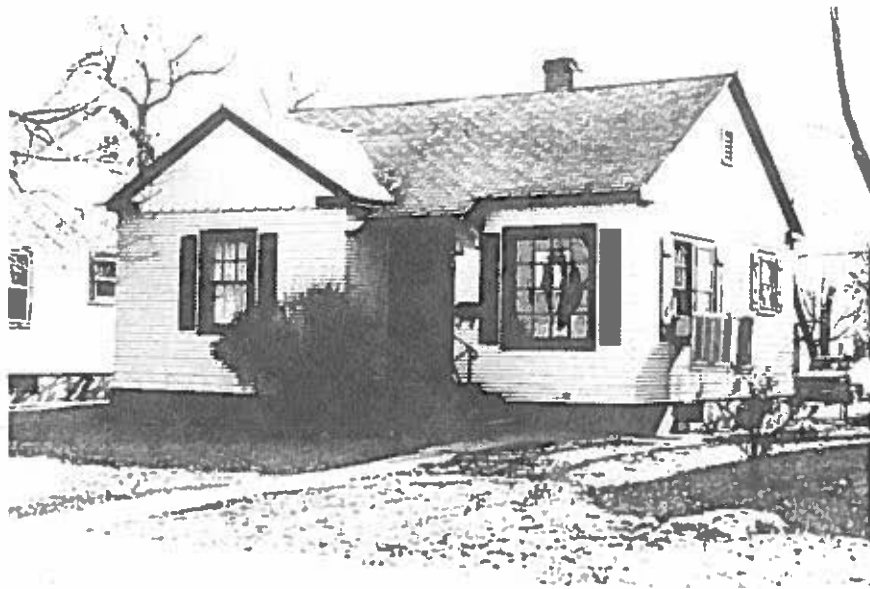
215 Belford Ave., Grand Junction, Mesa Co, CO

2945-142-11-003

02/07/1996

Roll 29 Frame 5 View N Dir S/SE

5mE8313



215 Belford Ave., Grand Junction, Mesa Co, CO
2945-142-11-003 02/07/1996
Roll 29 Frame 5 View N Dir S/SE
SME 8313