



**ARCHITECTURAL DESCRIPTION:** One story, with side gables. Concrete foundation. Concrete steps lead to porch with gabled roof, supported by a trio of slender steel full length pipes on the two front corners. Wood frame storm door. Front door is paneled and has a fan light. Windows around house are mainly double hung, wood sash, one-over-one. In center of facade is a large, fixed sash window with eight large lights. On west facade is a ribbon of three single light metal frame casements. Storm windows have white wood frames. On east elevation is a large fixed sash window with eight lights. Siding is dark brown wood shingles. Door and window surrounds, front and storm door, bargeboards and knee braces are white. Gray composition shingle roof. Gabled wing on the west elevation is flush with the facade, and has an extended roof. White painted brick chimney on north slope. Landscaped with lawn, and large trimmed evergreens across facade and east elevation. Two elm trees on parking area. A one car garage at the rear with front gable, gray composition shingle roof, dark brown wood shingle siding, and batten sliding door.

**PHOTOGRAPHS** (include photographs showing each side of building and any associated buildings)

Film roll no.: 29  
Negative no.: 24

Photographer: Carolyn Howard  
Location of negatives: City Of Grand Junction

**CONSTRUCTION HISTORY** (include description and dates of major additions, alterations, or demolitions): Siding, windows, storm door and windows. Additional construction or modifications not noted in Assessor's records.

**HISTORICAL BACKGROUND** (discuss important persons and events associated with this building): The first occupant of the house, constructed ca. 1922, was sheepman Jesse W. Osborn and his wife Zoe, residents ca. 1926-1930. Elizabeth Agnes and Frank Gower, a railroader, were the owners ca. 1931-1940, and the occupants, ca. 1935-1938. Frieda and Henry Blake, Richard Warren Motor Company, were the occupants, ca. 1939. Vida and Kenneth Anderson, office manager for Pacific Fruit, were the owners/occupants, ca. 1941-1942. Maxine and William McGowan (aka McGowen), a railroad brakeman, were the owners/occupants, ca. 1943 to at least 1980.

**INFORMATION SOURCES** (be specific): Plat Map, Appraisal Card, Lot and Block Books, Grand Junction City Directories.

**SIGNIFICANCE** (check appropriate categories)

**Architectural significance:**  
 represents the work of a master  
 possess high artistic value  
 represents a type, period, or method of construction

**Historical significance:**  
 associated with significant person(s)  
 associated with significant event  
 associated with a pattern of events  
 contributes to an historic district

**National Register eligibility:**  
 Individual  yes  no  
 Criteria:  A  B  C  D  
 Area(s) of significance: Architecture

**Contributes to a potential district:**  
yes no  
 District name:

Period of significance: 1922

**THEME(S):**

**STATEMENT OF SIGNIFICANCE** (briefly justify the significance checked above): Thoroughly remodeled, the entrance was changed from N.5th Street to Belford Avenue. Windows and siding are from the 1950s. Although not eligible for the National Register, this house may contribute to a local register.

**INVENTORY COMPLETED BY:** Museum Group Staff

**DATE:** 5/31/96

**AFFILIATION:** Museum of Western Colorado

**PHONE:** (970) 241-9117

**ADDRESS:** PO Box 20000-5020, Grand Junction, Colorado 81502-5020

**PROJECT NAME:** Grand Junction Historic Resources Survey, Phase 2



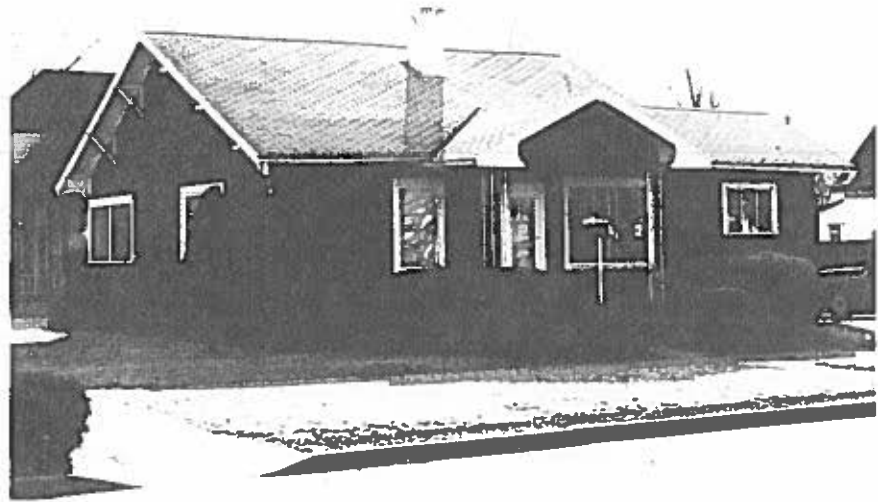
927 N. 5th St., Grand Junction, Mesa Co, CO

2945-142-09-007

02/07/1996

Roll 29 Frame 24 View N Dir S/SW

5mE8441



927 N. 5th St., Grand Junction, Mesa Co, CO  
2945-142-09-007 02/07/1996  
Roll 29 Frame 24 View N Dir S/SW  
*SME8441*