

ARCHITECTURAL DESCRIPTION: One story with front gable and wing. Concrete foundation. Hip roof wraparound open porch on east half of facade and half of west elevation. Concrete porch floor is nearly flush with the ground. Full height, 4x4 posts on the corners. In front of the door is a concrete stop. Door is paneled with a light and a metal frame storm door. A second paneled door with a light opens from the wing to the porch and has a concrete step. Windows around the house are double hung, wood sash, one-over-one. Light green asbestos shingle siding and trim. Tan composition shingle roof. Eaves are boxed with fascia boards.

Lawn. Small tree by east porch elevation. Other small trees on west elevation.

One car garage has alley access. Front gable roof has grey roll composition roofing. Green stained board and batten siding and doors. There are two metal storage sheds in the backyard.

PHOTOGRAPHS (include photographs showing each side of building and any associated buildings)

Film roll no.: 38

Negative no.: 3

Photographer: Carolyn Howard

Location of negatives: City Of Grand Junction

CONSTRUCTION HISTORY (include description and dates of major additions, alterations, or demolitions): Concrete porch floor and asbestos shingle siding. Additional construction or modifications not noted in Assessor's records.

HISTORICAL BACKGROUND (discuss important persons and events associated with this building): The house was first owned/occupied, ca. 1901-1904, by Maria Rainey (widow of James L). Vera and Mark J. McKeel, a clerk and later a meatcutter, were the owners/occupants, ca. 1905-1946. Kenneth W. McKeel, a railroad brakeman, was the occupant, ca. 1946.

INFORMATION SOURCES (be specific): Plat Map, Appraisal Card, Lot and Block Books, Grand Junction City Directories.

SIGNIFICANCE (check appropriate categories)

Architectural significance:

represents the work of a master

possess high artistic value

represents a type, period, or method of construction

Historical significance:

associated with significant person(s)

associated with significant event

associated with a pattern of events

contributes to an historic district

National Register eligibility:

Individual yes no

Criteria: A B C D

Area(s) of significance: Architecture

Contributes to a potential district:

yes no

District name:

Period of significance: 1900

THEME(S):

STATEMENT OF SIGNIFICANCE (briefly justify the significance checked above): The lowered porch floor of concrete is occasionally seen. It replaces a deteriorated wood porch. Although not eligible for the National Register, this house may contribute to a local register.

INVENTORY COMPLETED BY: Museum Group Staff

DATE: 5/31/96

AFFILIATION: Museum of Western Colorado

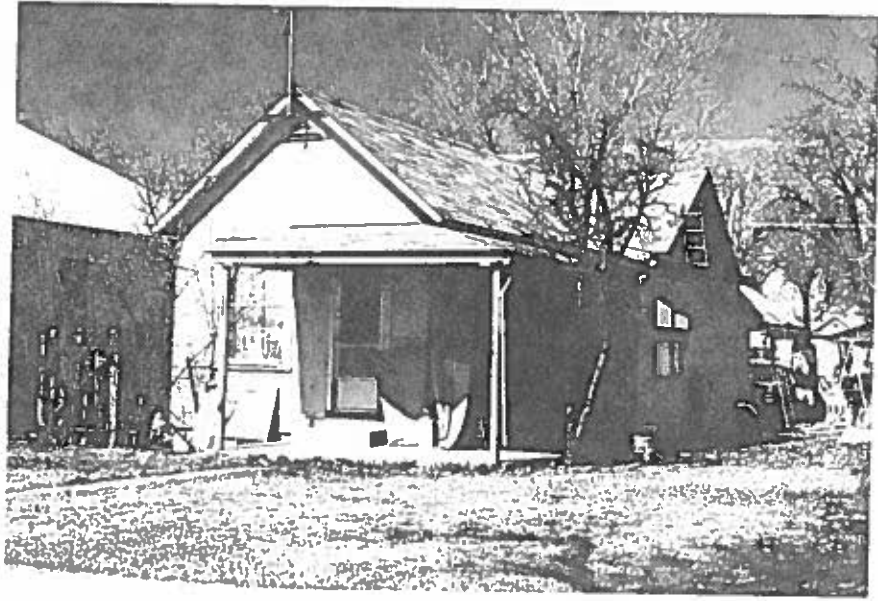
PHONE: (970) 241-9117

ADDRESS: PO Box 20000-5020, Grand Junction, Colorado 81502-5020

PROJECT NAME: Grand Junction Historic Resources Survey, Phase 2



326 Hill Ave. , Grand Junction, Mesa Co, CO
2945-142-15-013 03/11/1996
Roll 38 Frame 3 View S Dir N/NW
SME8465



326 Hill Ave. , Grand Junction, Mesa Co, CO
2945-142-15-013 03/11/1996
Roll 38 Frame 3 View S Dir N/NW

SME8465