

ARCHITECTURAL DESCRIPTION: One story, front gable roof. Rusticated concrete block foundation. Concrete steps on center of facade lead to a sunporch/entry that extends across 3/4's of facade with gable roof. Porch half wall of simple drop siding extends down to ground level. Half height, squared corner posts. Porch glazing consists of ribbons of wood frame, eight light windows on all three sides of porch. Screens over all windows. Porch has French door. Main door is glazed. Windows around house are double hung wood sash, one over one, with metal storms. Squared bay on east elevation with continuous shed roof. Light gray, simple drop siding. Porch gable has light gray shake shingles which alternate with turquoise fishscale shingles. Corner boards, water table, cornices and raking cornices, porch door frame, and window surrounds are dark gray. Window frames are turquoise. Light green composition roof shingles with overhanging eaves. Brick chimney on east slope.

Grass lawn with young tree next to street. Two small bushes along facade. Tall wood fence enclosed backyard.

Gravel drive on west side of lot leads to a one car garage in rear. Front gable roof covered with dark gray composition shingles. Wide, lapped board aluminum siding is light gray. Raking cornices and corner boards are dark gray.

PHOTOGRAPHS (include photographs showing each side of building and any associated buildings)

Film roll no.: 44
Negative no.: 19

Photographer: Carolyn Howard
Location of negatives: City Of Grand Junction

CONSTRUCTION HISTORY (include description and dates of major additions, alterations, or demolitions): Rear porch enclosed, 1985. May have been moved onto location. Additional construction or modifications not noted in Assessor's records. *STORM WINDOWS*

HISTORICAL BACKGROUND (discuss important persons and events associated with this building): Although listed as being built in 1909, this house does not show up on the tax records prior to 1922 when it was the home of owners Myrtle and James White, a thresher, who lived there through 1936. The house then served as a rental through at least 1947, with tenants including a printer, clerk, salesman and assistant manager of Gibson Lumber Company.

INFORMATION SOURCES (be specific): Plat Map, Appraisal Card, Lot and Block Books, Grand Junction City Directories.

SIGNIFICANCE (check appropriate categories)

Architectural significance:
 represents the work of a master
 possess high artistic value
 represents a type, period, or method of construction

Historical significance:
 associated with significant person(s)
 associated with significant event
 associated with a pattern of events
 contributes to an historic district

National Register eligibility:
 Individual yes no
 Criteria: A B C D
 Area(s) of significance: Architecture

Contributes to a potential district:
 yes no
 District name:

Period of significance: 1937

THEME(S):

STATEMENT OF SIGNIFICANCE (briefly justify the significance checked above): One of three houses in this area of town, with the same mass, bay window, an porches with lower pitch than the principal. Although not eligible for the National Register, this house may contribute to a local register.

AND

INVENTORY COMPLETED BY: Museum Group Staff

DATE: 5/31/96

AFFILIATION: Museum of Western Colorado

PHONE: (970) 241-9117

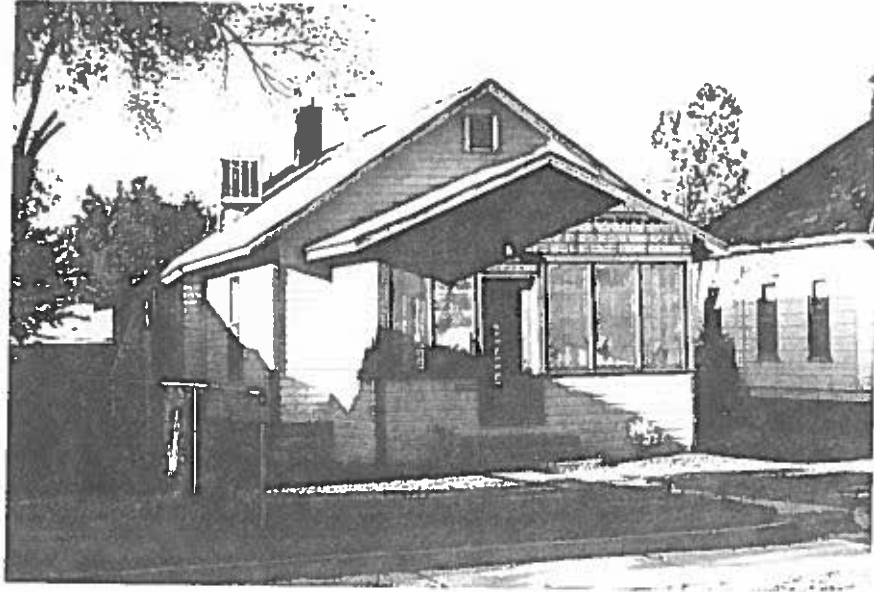
ADDRESS: PO Box 20000-5020, Grand Junction, Colorado 81502-5020

PROJECT NAME: Grand Junction Historic Resources Survey, Phase 2



1411 Main St., Grand Junction, Mesa Co, CO
2945-133-15-002 05/14/1996
Roll 44 Frame 19 View N Dir SW

run 500/2



1411 Main St., Grand Junction, Mesa Co, CO
2945-133-15-002 05/14/1996
Roll 44 Frame 19 View N Dir SW
5ME8563