

ARCHITECTURAL DESCRIPTION: One story with flat roof. The 7th Street elevation has a shallow recessed bay in the center two-thirds. Formerly the entry, it is now walled with brown brick with a maroon vinyl canopy. Two single light windows in the brick wall have brick rowlock sills. The White Avenue elevation has five bays, divided by full-height pilasters. The three bays each have a large glass block window with 91 blocks, with no surrounds. Center bay has the entry. Door is metal frame with a full light and push bars, with a maroon vinyl canopy overhead. The fifth bay has a large single light window in a metal frame. By the west corner of that elevation is an unused metal frame door with a full light and push bars. Glass block windows on the west and north elevations. The walls are light buff stucco. The flat roof has an even parapet. Near the top of the parapet are visor roofs on the north and south elevations. The visors have two courses of red Spanish tiles.

Red gravel is on the parking. A Shademaster honey locust and two small red leaf trees are in red concrete planters.

PHOTOGRAPHS (include photographs showing each side of building and any associated buildings)

Film roll no.: 43
Negative no.: 17

Photographer: Carolyn Howard
Location of negatives: City Of Grand Junction

CONSTRUCTION HISTORY (include description and dates of major additions, alterations, or demolitions): 7th Street entrance closed and walled. Additional construction or modifications not noted in Assessor's records.

HISTORICAL BACKGROUND (discuss important persons and events associated with this building): Originally owned by U.P. and Mary Harris (ca. 1948-1957) this building was known as the Harris Good Food Drive-In from 1952-1959. After several vacant years, it became the Rimrock Book Store in 1961 and was still listed as this business in 1965.

INFORMATION SOURCES (be specific): Plat Map, Appraisal Card, Lot and Block Books, Grand Junction City Directories.

SIGNIFICANCE (check appropriate categories)

Architectural significance:
 represents the work of a master
 possess high artistic value
 represents a type, period, or method of construction

Historical significance:
 associated with significant person(s)
 associated with significant event
 associated with a pattern of events
 contributes to an historic district

National Register eligibility:
 Individual yes no
 Criteria: A B C D
 Area(s) of significance: Architecture

Contributes to a potential district:
 yes no
 District name:

Period of significance: 1948

THEME(S):

STATEMENT OF SIGNIFICANCE (briefly justify the significance checked above): Originally a restaurant, then a bookstore, this building now houses law offices. The closed entry is the major change. Although not eligible for the National Register, this building may contribute to a local register.

INVENTORY COMPLETED BY: Museum Group Staff

DATE: 5/31/96

AFFILIATION: Museum of Western Colorado

PHONE: (970) 241-9117

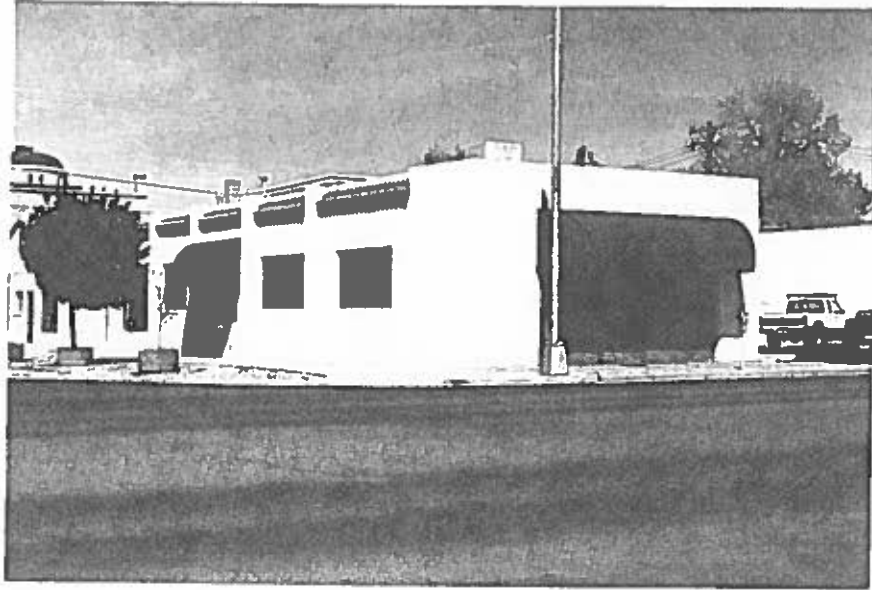
ADDRESS: PO Box 20000-5020, Grand Junction, Colorado 81502-5020

PROJECT NAME: Grand Junction Historic Resources Survey, Phase 2



660 White Ave. (301 N. 7th St.), Grand Junction, Mesa Co, CO
2945-144-06-005 04/30/1996
Roll 43 Frame 17 View S Dir NW •

SME9575



660 White Ave. (301 N. 7th St.), Grand Junction, Mesa Co, CO
2945-144-06-005 04/30/1996
Roll 43 Frame 17 View S Dir NW •
5ME8575