

ARCHITECTURAL DESCRIPTION: One and two story with flat roofs and stepped parapets. Concrete foundation. Concrete step leads to door in the center of the facade which is metal frame with a full light and a push bar. On the south edge of the door is a full-height, single light sidelight. South of the entry are two single light windows in metal frames. Door, sidelight, and the two single light windows are amber glass, or have an applied film. North of the door are three windows of glass blocks, with forty blocks each. Door and windows are flush with the stucco walls, with no surrounds. Large metal automotive door on the south of the facade. At the far south is a chain-link gate at the entry to an enclosed loading dock. On the south elevation are three glass block windows. The north third of the building is two story, brick, with a stucco facade. The concrete block addition to the south is one story, and is stuccoed on the facade and south elevation. The peach colored stucco is textured.

PHOTOGRAPHS (include photographs showing each side of building and any associated buildings)

Film roll no.: 41
Negative no.: 10

Photographer: Carolyn Howard
Location of negatives: City Of Grand Junction

CONSTRUCTION HISTORY (include description and dates of major additions, alterations, or demolitions): Addition. Stucco siding. Windows and door. Additional construction or modifications not noted in Assessor's records.

HISTORICAL BACKGROUND (discuss important persons and events associated with this building): Originally belonging to the Juanita Sales Company, this building was known as the Grand Junction Bottling Company ca 1921-1935. It then became the Grand Junction Coca-Cola Bottling Company ca. 1937 through at least 1947.

INFORMATION SOURCES (be specific): Plat Map, Appraisal Card, Lot and Block Books, Grand Junction City Directories. Grand Junction Historic Survey, 1981.

SIGNIFICANCE (check appropriate categories)

Architectural significance:
 represents the work of a master
 possess high artistic value
 represents a type, period, or method of construction

Historical significance:
 associated with significant person(s)
 associated with significant event
 associated with a pattern of events
 contributes to an historic district

National Register eligibility:
Individual yes no
Criteria: A B C D
Area(s) of significance: Architecture

Contributes to a potential district:
yes no
District name:

Period of significance: 1917

THEME(S):

STATEMENT OF SIGNIFICANCE (briefly justify the significance checked above): A 1917 building and additions which have been unified by stucco siding and modern door and windows.

INVENTORY COMPLETED BY: Museum Group Staff

DATE: 5/31/96

AFFILIATION: Museum of Western Colorado

PHONE: (970) 241-9117

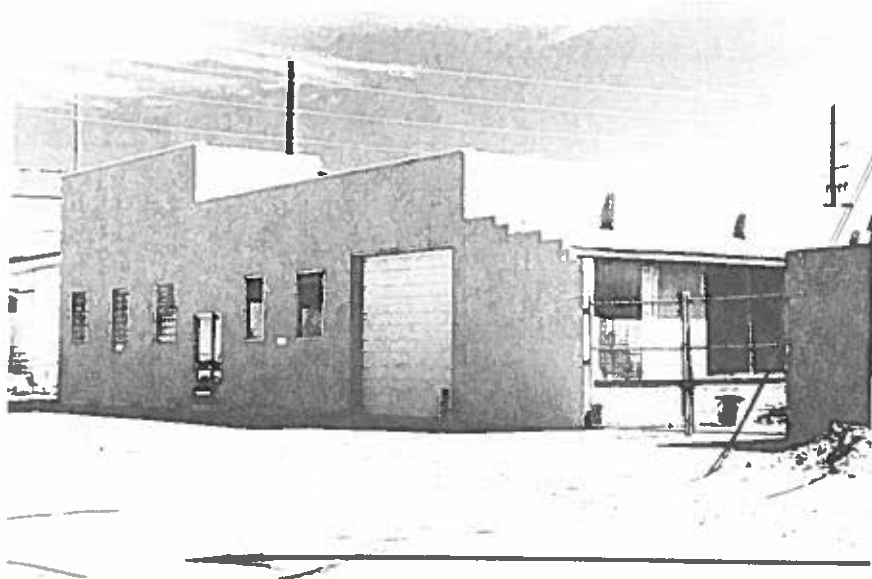
ADDRESS: PO Box 20000-5020, Grand Junction, Colorado 81502-5020

PROJECT NAME: Grand Junction Historic Resources Survey, Phase 2



420 S. 6th St., Grand Junction, Mesa Co, CO
2945-143-41-004 04/29/1996
Roll 41 Frame 10 View W Dir NE •

SME8577



420 S. 6th St., Grand Junction, Mesa Co, CO
2945-143-41-004 04/29/1996
Roll 41 Frame 10 View W Dir NE •
SME8577