

ARCHITECTURAL DESCRIPTION: Two story, cross gable roof. Concrete basement skirted with muted ocher brick. Double pane basement windows. Concrete steps on center of facade with massive brick piers and concrete coping, lead to hip roof porch that wraps around the northeast corner of the house. The porch facade has three full height, squared, brick piers and a quarter height squared pier with concrete coping. Attached to the quarter height pier, is a brick half-wall with concrete coping. House has two main doors that are French, one has wood frame screen door. Enclosed east side of porch has two large, full height brick piers on porch facade. Porch glazing consists of ribbons of double hung, wood sash windows, one-over-one, with wood frame screens. Between the windows are mullions. Wood shingles on half-wall. Majority of windows are double hung, wood sash, one-over-one. Gable faces on east and west elevation have a ribbon of three sash windows, three over one. Large fixed pane picture windows with transoms on facade. First floor of house has red brick siding laid in common bond. Second story gable faces have pale yellow wood shingles. Small gable wing projects from west side of facade. Sunporch posts, window frames and surrounds, and wood frame screens are dark brown. Raking comices are pale yellow. Gray composition shingle roof. Brick chimney on south slope. Full height brick fireplace chimney is on the west eave wall. Small brick arch niches on brick porch piers.

Yard near house has lava rock. Grass backyard with mature tree. Broad sidewalk along street has a small maple in a grated opening.

PHOTOGRAPHS (include photographs showing each side of building and any associated buildings)

Film roll no.: 43
Negative no.: 5

Photographer: Carolyn Howard
Location of negatives: City Of Grand Junction

CONSTRUCTION HISTORY (include description and dates of major additions, alterations, or demolitions): Porch enclosed. Entries for apartments. Additional construction or modifications not noted in Assessor's records.

HISTORICAL BACKGROUND (discuss important persons and events associated with this building): This house was first owned/occupied by Grace and Charles Nichols, a clerk and later a railroad ticket agent, ca. 1923-1937. Beatrice and Victor DeMerschman lived in the house ca. 1939-1940 before converting it to the DeMerschman Apartments, with an average of four tenants per year.

INFORMATION SOURCES (be specific): Plat Map, Appraisal Card, Lot and Block Books, Grand Junction City Directories. Sanborn Fire Insurance Maps: 1961, 1947.

SIGNIFICANCE (check appropriate categories)

Architectural significance:
 represents the work of a master
 possess high artistic value
 represents a type, period, or method of construction

Historical significance:
 associated with significant person(s)
 associated with significant event
 associated with a pattern of events
 contributes to an historic district

National Register eligibility:
 Individual yes no
 Criteria: A B C D
 Area(s) of significance: Architecture

Contributes to a potential district:
 yes no
 District name:

Period of significance: 1922

THEME(S):

STATEMENT OF SIGNIFICANCE (briefly justify the significance checked above): A large Bungalow which has been converted to ten small apartments. It still retains much of its original appearance. Although not eligible for the National Register, this house may contribute to a local register.

INVENTORY COMPLETED BY: Museum Group Staff

DATE: 5/31/96

AFFILIATION: Museum of Western Colorado

PHONE: (970) 241-9117

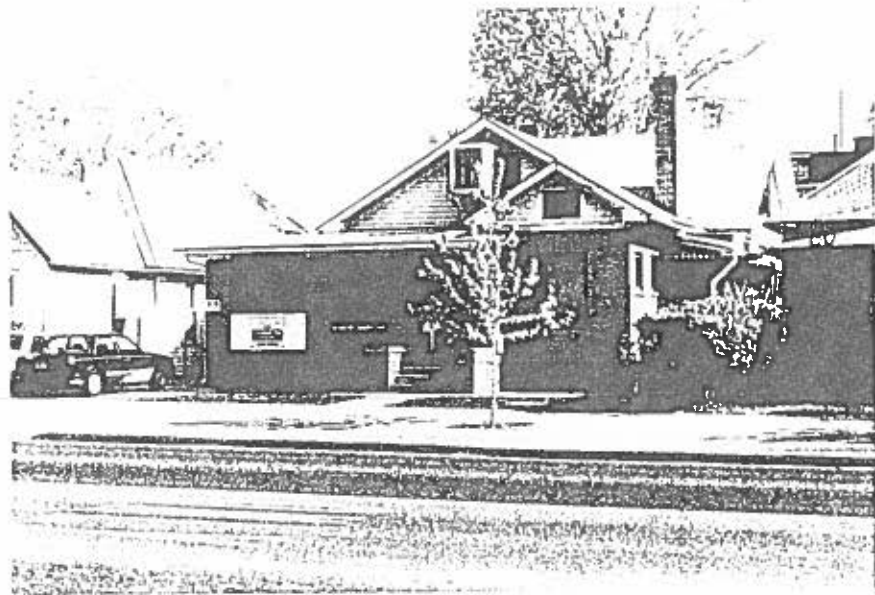
ADDRESS: PO Box 20000-5020, Grand Junction, Colorado 81502-5020

PROJECT NAME: Grand Junction Historic Resources Survey, Phase 2



609 Grand Ave., Grand Junction, Mesa Co, CO
2945-143-06-002 04/29/1996
Roll 43 Frame 5 View N Dir S/SE •

SME8616



609 Grand Ave., Grand Junction, Mesa Co, CO
2945-143-06-002 04/29/1996
Roll 43 Frame 5 View N Dir S/SE •

JME 86/8