



Purchasing Division

ADDENDUM NO. 1

DATE: February 11, 2016
FROM: City of Grand Junction Purchasing Division
TO: All Offerors
RE: IFB-4168-16-DH Motor Control Centers Replacements for Persigo WWTP Phase IV

Offerors responding to the above referenced solicitation are hereby instructed that the requirements have been clarified, modified, superseded and supplemented as to this date as hereinafter described.

Please make note of the following clarifications:

1. Q. Can you please provide us a list of critical operations equipment for the project?
 - A. Belt Filter Press, Polymer mixing system and pumps, Plant water booster pumps, sludge pumps, conveyers, compressors and the DAF equipment.
2. Q. Where are the VFD's for the blowers located?
 - A. The VFD's are in the MCC's.
3. Q. When are you not processing? When are the blowers not running?
 - A. After 2:00 PM M-F and weekends. One blower needs to run 24-7 so one can be put on a generator.
4. Q. What are you going to require for "as-builts"?
 - A. Correct labeling of all breakers and buckets.
5. Q. What are your most critical days for operations?
 - A. Mondays are the most critical.
6. Q. Who will be responsible for programming?
 - A. The Owner will be responsible for programming.
7. Q. Does this project have to be GFI or not?

- A. Yes it will need to be GFI
8. Q. Are there any one line drawings for the MCC or component spec sheets for the equipment being supported by the MCC shown on Page 19?
- A. Please see the original line drawings. NOTE: These are drawings are upwards of 35 years old and are **not** accurate.
9. Existing curbing shall be removed and new curbing installed to the proper dimensions of the new equipment, by the Contractor.
10. Contractor needs to be award of the logistics of the project. The majority of this project is located on the second floor of the building.
11. Contractor needs to utilize shipping splits for equipment delivery.
12. Contractor needs to pay attention to the mains and conduits coming in through the floor, and take these into account for the project.
13. See attached revised load list developed from the site visit.
14. See attached site visit sign in sheet.

The original solicitation for the project noted above is amended as noted.

All other conditions of subject remain the same.

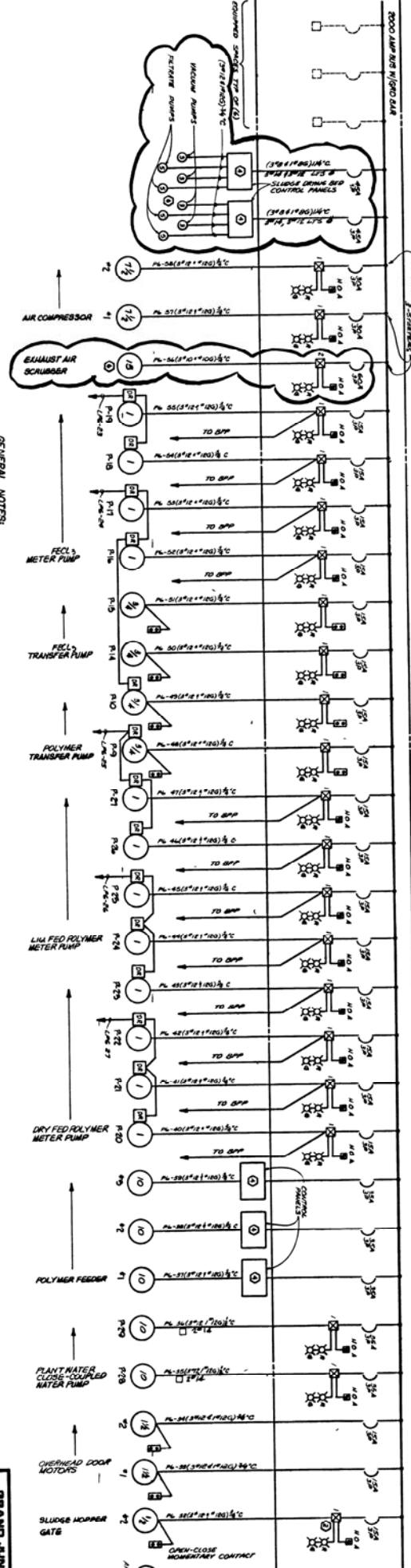
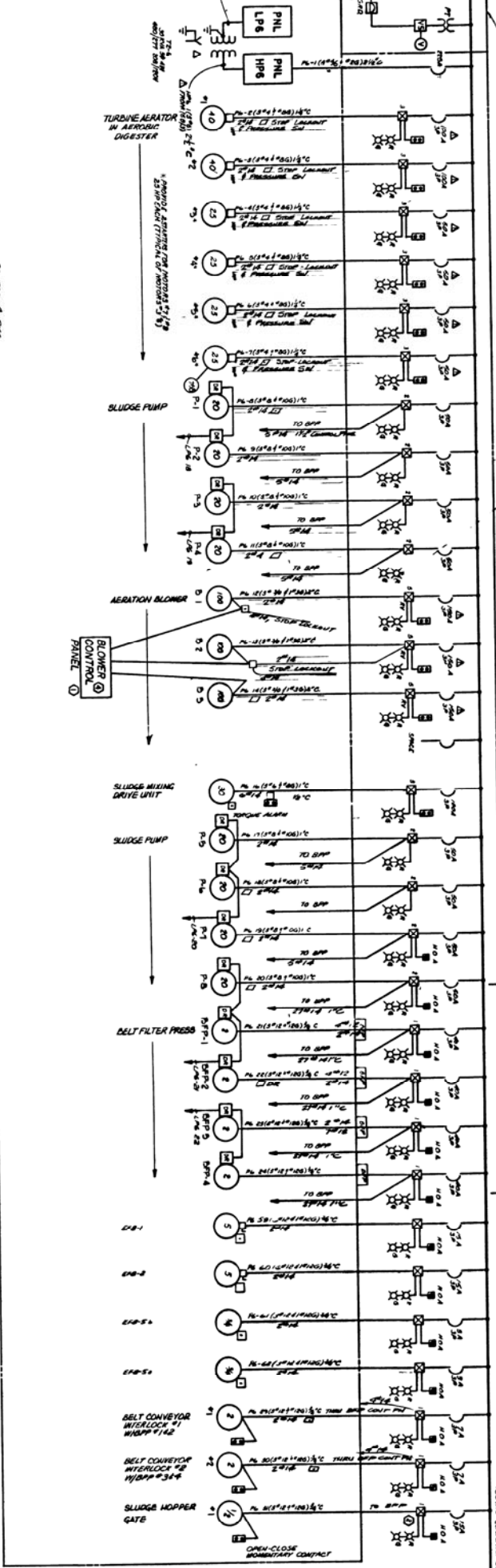
Respectfully,



Duane Hoff Jr., Senior Buyer
City of Grand Junction, Colorado

CONSTRUCTION SCHEDULE "B" SEE SPECIFICATIONS

MCC-6 (SLUDGE PROCESSING BLDG.)



WORK NOTES:

1. ALL MOTORS TO HAVE ELASATED TIME SETTERS LOCATED IN THE MCC.
2. HEAVY AND COORDINATE EXISTING WIRING REQUIREMENTS FOR CONTROLS.
3. WIRING CONTROLS COORDINATE EXISTING SIGNALS, STARTS, STOP AND STOPPING.
4. ALL WIRING TO BE CONTROLLED BY MCC AT STARTER.
5. ALL CIRCUIT BREAKERS IN MCC TO BE WATED AT 480V AC.
6. FEEDER TO PANEL 105 SHOULD BE IN 2" C.
7. Polymer transfer pump (P-1 and P-2) should be changed from 115V to 230V.
8. The plant water close-coupled water pump (P-10 and P-11) should be changed from 230V to 480V. Change transfer wires to (3) 1/2" (3) 1/2" & (1) 3/4" 250 CIRCUIT BREAKER.

GENERAL NOTES:

1. ALL MOTORS TO HAVE ELASATED TIME SETTERS LOCATED IN THE MCC.
2. HEAVY AND COORDINATE EXISTING WIRING REQUIREMENTS FOR CONTROLS.
3. WIRING CONTROLS COORDINATE EXISTING SIGNALS, STARTS, STOP AND STOPPING.
4. ALL WIRING TO BE CONTROLLED BY MCC AT STARTER.
5. ALL CIRCUIT BREAKERS IN MCC TO BE WATED AT 480V AC.
6. FEEDER TO PANEL 105 SHOULD BE IN 2" C.
7. Polymer transfer pump (P-1 and P-2) should be changed from 115V to 230V.
8. The plant water close-coupled water pump (P-10 and P-11) should be changed from 230V to 480V. Change transfer wires to (3) 1/2" (3) 1/2" & (1) 3/4" 250 CIRCUIT BREAKER.

AS RECORDED FROM INFORMATION FROM CONTRACTOR'S DATA.

(Except As Noted)

CONSTRUCTION SCHEDULE "B" SEE SPECIFICATIONS

DATE	BY	REVISION
12/15/14	AS	ISSUE
12/16/14	AS	REVISED FOR FINAL REVIEW
12/17/14	AS	REVISED FOR FINAL REVIEW
12/18/14	AS	REVISED FOR FINAL REVIEW
12/19/14	AS	REVISED FOR FINAL REVIEW
12/20/14	AS	REVISED FOR FINAL REVIEW
12/21/14	AS	REVISED FOR FINAL REVIEW
12/22/14	AS	REVISED FOR FINAL REVIEW
12/23/14	AS	REVISED FOR FINAL REVIEW
12/24/14	AS	REVISED FOR FINAL REVIEW
12/25/14	AS	REVISED FOR FINAL REVIEW
12/26/14	AS	REVISED FOR FINAL REVIEW
12/27/14	AS	REVISED FOR FINAL REVIEW
12/28/14	AS	REVISED FOR FINAL REVIEW
12/29/14	AS	REVISED FOR FINAL REVIEW
12/30/14	AS	REVISED FOR FINAL REVIEW
12/31/14	AS	REVISED FOR FINAL REVIEW

SECTION 31E ONE LINE DIAGRAM MCC-6

GRAND JUNCTION / MESA 6 COLORADO WASTE WATER TREATMENT PLANT

SHAWNEE CONSULTANTS

DESIGNED BY: SHAWNEE CONSULTANTS
 CHECKED BY: SHAWNEE CONSULTANTS
 DATE: 12/15/14

MCC-6 Sludge Processing					
Qty	Description	Device Type	Rating	Designation	Expansion Space
1	Lighting Panel	Breaker	225A	Lighting Panel HP6	
1	Welding Receptacle	Breaker	50A	Welding Receptacle	
2	Exhaust Fan (2 speed)	FVNR	10HP	Exhaust Fan EF8-1, Exhaust Fan EF8-2	
2	Exhaust Fan	FVNR	1HP	Exhaust Fan EF8-5a,Exhaust Fan EF8-5b	
1	Exhaust Fan	FVNR	25HP	Exhaust Fan EF8-6	
1	Sludge Mixing Unit	FVNR	50HP	Sludge Mixing Unit	
8	Sludge Pumps	Breaker	50A	Sludge Pump 1-8	
2	Conveyor Belts	FVNR	2HP	Conveyor Belt 1 and 2	
4	Belt Filter Press	Breaker	40A	Belt Filter Press 1-4	
3	Polymer Mixers	Breaker	35A	Polymer Mixer 1-3	
2	Truck Bay Doors	Breaker	15A	Bay Door East, Bay Door West	
1	Grease Beacher	FVNR	2HP	Grease Beacher	
2	Plant Water Booster Pumps	FVNR	10HP	Plant Water Booster Pump P-30, P-31	
1	Air Handling Unit	Breaker	50A	AHU	
1	Air Handling Unit	Breaker	15A	AHU	
1	Air Compressor	FVNR	25HP	Air Compressor	
3	Aeration Blowers	VFD	125HP	Aeration Blowers 1-3	
1	Polymer Transfer Pumps	Breaker	7A	Polymer Transfer Pump	
4	Polymer Solution Pumps	Breaker	7A	Polymer Solution Pump 1-4	
1	UH-8-10	Breaker	25A	UH 8-10	
1	UH-8-11	Breaker	25A	UH 8-11	
1	VCP-610	Breaker	100A	VCP-610	
1	LCP 301	Breaker	35A	LCP 301	
1	Pre-Heater	FVNR	100A	AHU Pre-Heater	

Solicitation Name:	Motor Control Centers Replacements for Persigo WWTP Phase IV
Solicitation #:	IFB-4168-16-DH
Date:	2/4/2016
Time:	10:30am

SIGN-IN SHEET



	Company Name	Representative Name	Phone	Email
1	CAM Electric Inc	Chris McNatt	970-249-6617	camcnatta@aol.com
2	Iconductor Electric	Jason Wickham	970-858-6774	Jason@iconductorelectric.com
3	Iconductor Electric	Tim Fellet	"	Tim@iconductorelectric.com
4	BODEC Electric	Christian Tabone	435-650-9568	CTabone@bodecinc.com
5	White Star Electric	Lee Eberhart	970-256-9419	lee@whitestarelectric.com
6	Sturgeon Electric	Shane Moe	970-985-3345	smoe@mygroup.com
7	Dare - Case Contracting	Daryl Becker	970-640-5280	Daryl@Darecontracting.com
8				
9				
10				
11				
12				
13				
14				