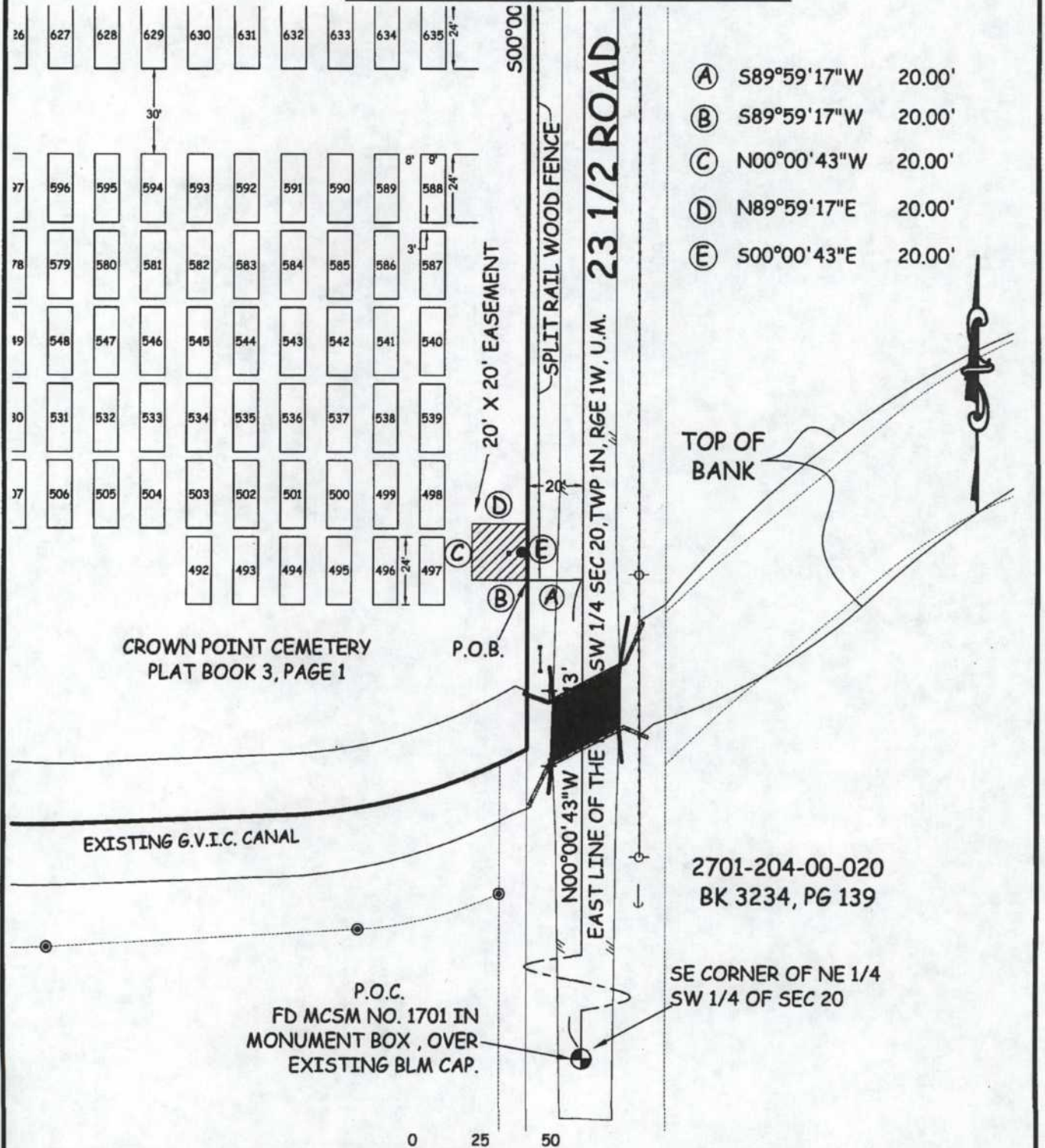


EXHIBIT "B"



- (A) S89°59'17"W 20.00'
- (B) S89°59'17"W 20.00'
- (C) N00°00'43"W 20.00'
- (D) N89°59'17"E 20.00'
- (E) S00°00'43"E 20.00'

CROWN POINT CEMETERY
PLAT BOOK 3, PAGE 1

EXISTING G.V.I.C. CANAL

P.O.C.
FD MCSM NO. 1701 IN
MONUMENT BOX, OVER
EXISTING BLM CAP.

2701-204-00-020
BK 3234, PG 139

SE CORNER OF NE 1/4
SW 1/4 OF SEC 20

ABBREVIATIONS

- R.O.W. RIGHT OF WAY
- SEC. SECTION
- TWP. TOWNSHIP
- RGE. RANGE
- U.M. UTE MERIDIAN
- P.O.C. POINT OF COMMENCEMENT
- P.O.B. POINT OF BEGINNING
- SSMH SANITARY SEWER MAN HOLE



1 inch = 50 ft.
LINEAL UNITS = US SURVEY FOOT

The sketch and description shown hereon has been derived from subdivision plats and deed descriptions as they appear in the office of the Mesa County Clerk and Recorder. This sketch does not constitute a legal survey, and is not intended to be used as a means for establishing or verifying property boundary lines.

THIS IS NOT A SURVEY

DRAWN BY: PTK
DATE: 4-21-10
SCALE: 1" = 50'
APPR. BY: PTK

CITY OF GRAND JUNCTION
CROWN POINT CEMETERY
NW 1/4 SW 1/4 SEC 20
TWP 1N, RGE 1W, U.M

CITY OF
Grand Junction
COLORADO

