



Purchasing Division

ADDENDUM NO. 1

DATE: August 16, 2016
FROM: City of Grand Junction Purchasing Division
TO: All Offerors
RE: B ½ Rd. Overpass at U.S. 50 Multimodal Conversion Project IFB-4199-16-DH

Offerors responding to the above referenced solicitation are hereby instructed that the requirements have been clarified, modified, superseded and supplemented as to this date as hereinafter described.

Please make note of the following clarifications:

1. The location for the mandatory Pre-Bid meeting will now take place in the City Hall Breakroom located on the first floor of City Hall just down the hall from the City Council Auditorium. Time and date remain unchanged.
2. The project electrical plans have been updated. Replace the electrical plans (sheets 82 - 94) with the attached updated electrical plans included with this addendum.

The original solicitation for the project noted above is amended as noted.

All other conditions of subject remain the same.

Respectfully,

A handwritten signature in black ink, appearing to read "Duane Hoff Jr.", is written over a horizontal line.

Duane Hoff Jr., Senior Buyer
City of Grand Junction, Colorado

Schedule of Lighting Devices										
ITEM No.				613-30005		613-40012		See note 2		
LONG DESCRIPTION				LIGHT STANDARD AND LUMINAIRE (PEDESTRIAN)		LIGHT STANDARD FOUNDATION SPECIAL		LUMINAIRE LED (66 WATT)		NOTES
UNITS				EACH(BY OTHERS)		EACH		EACH		
SHEET NO.	I.D. NO.	STATION	OFFSET	PLAN	AS CONST	PLAN	AS CONST	PLAN	AS CONST	
LE3	SA-1	5+28.87	R=17.27	1		1		1		1,2
LE3	SA-2	6+19.71	R=22.08	1		1		1		1,2
LE3	SA-3	7+19.65	R=18.66	1		1		1		1,2
LE3	SA-4	8+17.38	R=20.34	1		1		1		1,2
LE4	SA-5	9+20.07	R=20.96	1		1		1		1,2
LE4	SA-6	10+22.11	R=20.88	1		1		1		1,2
LE4	SA-7	11+24.19	R=20.74	1		1		1		1,2
LE4	SA-8	12+26.30	R=20.57	1		1		1		1,2
LE4	SA-9	13+23.15	R=17.00	1		1		1		1,2
LE5	SA-10	14+39.15	R=14.99	1		1		1		1,2
LE5	SA-11	15+55.15	R=17.41	1		1		1		1,2
LE5	SA-12	16+71.15	R=21.00	1		1		1		1,2
LE5	SA-13	17+87.15	R=24.16	1		1		1		1,2
LE6	SA-14	19+2.39	R=32.90	1		1		1		1,2
LE6	SA-15	20+18.03	R=39.06	1		1		1		1,2
LE6	SA-16	21+13.07	R=26.67	1		1		1		1,2
LE6	SA-17	22+7.89	R=39.00	1		1		1		1,2
LE6	SA-18	23+15.89	R=39.00	1		1		1		1,2
LE7	SA-19	24+23.89	R=39.00	1		1		1		1,2
LE7	SA-20	25+31.89	R=39.00	1		1		1		1,2
LE7	SA-21	26+39.89	R=39.00	1		1		1		1,2
LE7	SA-22	27+43.72	R=39.00	1		1		1		1,2
LE7	SA-23	28+61.72	R=39.00	1		1		1		1,2
LE8	SA-24	29+70.20	R=39.00	1		1		1		1,2
LE8	SA-25	30+69.91	R=39.00	1		1		1		1,2
LE8	SA-26	31+69.91	R=38.98	1		1		1		1,2
LE8	SA-27	32+53.91	R=38.99	1		1		1		1,2
LE8	SA-28	33+37.30	R=39.00	1		1		1		1,2
TABLE TOTALS				28		28		28		

SCHEDULE OF LIGHTING DEVICES NOTES:

- FOUNDATION TOP HEIGHT EQUAL TO ADJACENT SIDEWALK
- LUMINAIRE LED (66 WATT) IS TO BE INCLUDED IN THE COST OF PAY ITEM 613-30005 LIGHT STANDARD AND LUMINAIRE (PEDESTRIAN)
- FOUNDATION TOP HEIGHT AS SHOWN IN DETAIL.

Tabulation of Approximate Quantities(BASE PROJECT)					
Item No.	Ref. No.	Construction Note Description	Quantity	Unit	NOTES
	613-01200	2 Inch Electrical Conduit (Plastic)	2807	LF	
	613-00207	2 Inch Electrical Conduit (RIGID STEEL CONDUIT)	236	LF	1
	613-07001	Type One Pull Box	27	EA	3
	613-07010	Pull Box (Surface Mounted)	1	EA	1,2
	613-10000	Wiring	1	LS	
	613-30005	Light Standard and Luminaire (Pedestrian)	28	EA	
	613-40012	Light Standard Foundation (Special)	28	EA	
	613-50106	Lighting Control Center (Special)	1	EA	

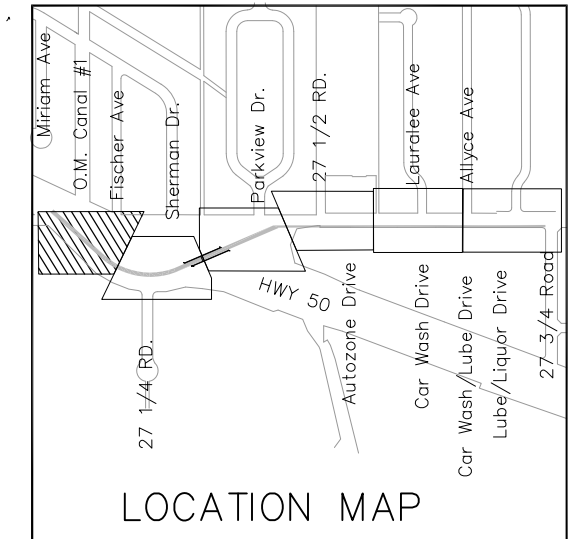
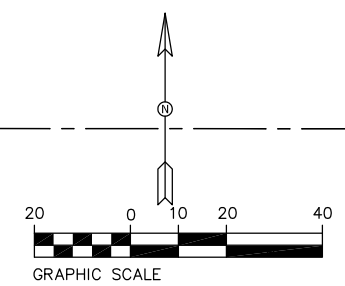
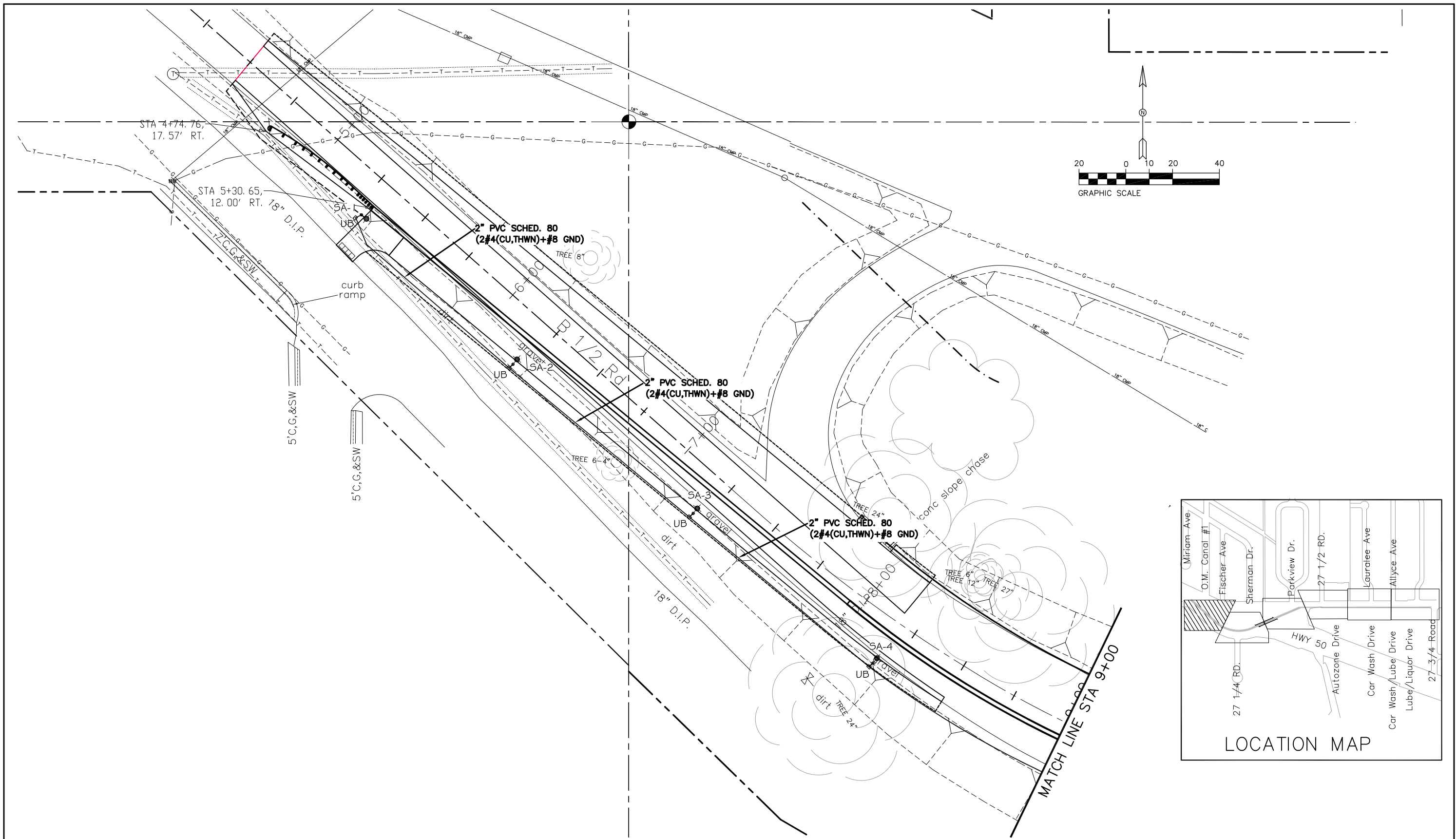
SUMMARY NOTES:

- INSTALLED UNDER BRIDGE DECK FOR CONNECTION TO BRIDGE MOUNTED LIGHT.
- NEMA 3R
- INCLUDE MINIMUM 6" OF PEA GRAVEL FOR DRAINAGE, REFERENCE DETAIL C3 DRAWING LE12



Know what's below.
Call before you dig.

Print Date: 8-15-2016	0000	Sheet Revisions				As Constructed		LIGHTING SCHEDULES AND TABULATIONS		Project No./Code	
File Name:		Date:	Comments	Init.		No Revisions:	TAP M555-032				
Horiz. Scale: AS SHOWN						Revised:	Designer: AJM	Structure Numbers	20736		
Unit Information: City of GJ Unit Leader Initials: LC						Void:	Detailer: AJM	Subset Sheets: LE2 of 13	Sheet Number		
ACM CONSULTING AND ENGINEERING PH: (970) 245-7292 EMAIL: JOELM@ACMENGRS.COM											



Print Date: 8-15-2016
 File Name:
 Horiz. Scale: AS SHOWN Vert. Scale: NA
 Unit Information: City of GJ Unit Leader Initials: LC
 ACM CONSULTING AND ENGINEERING
 PH: (970) 245-7292
 EMAIL: JOELM@ACMENGRS.COM

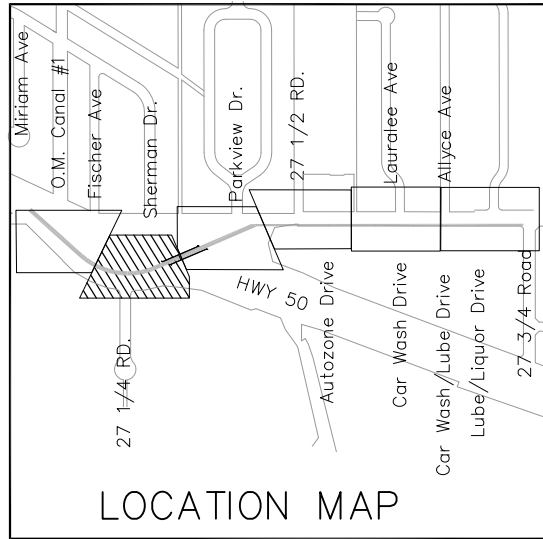
Sheet Revisions		
Date:	Comments	Init.



As Constructed
 No Revisions:
 Revised:
 Void:

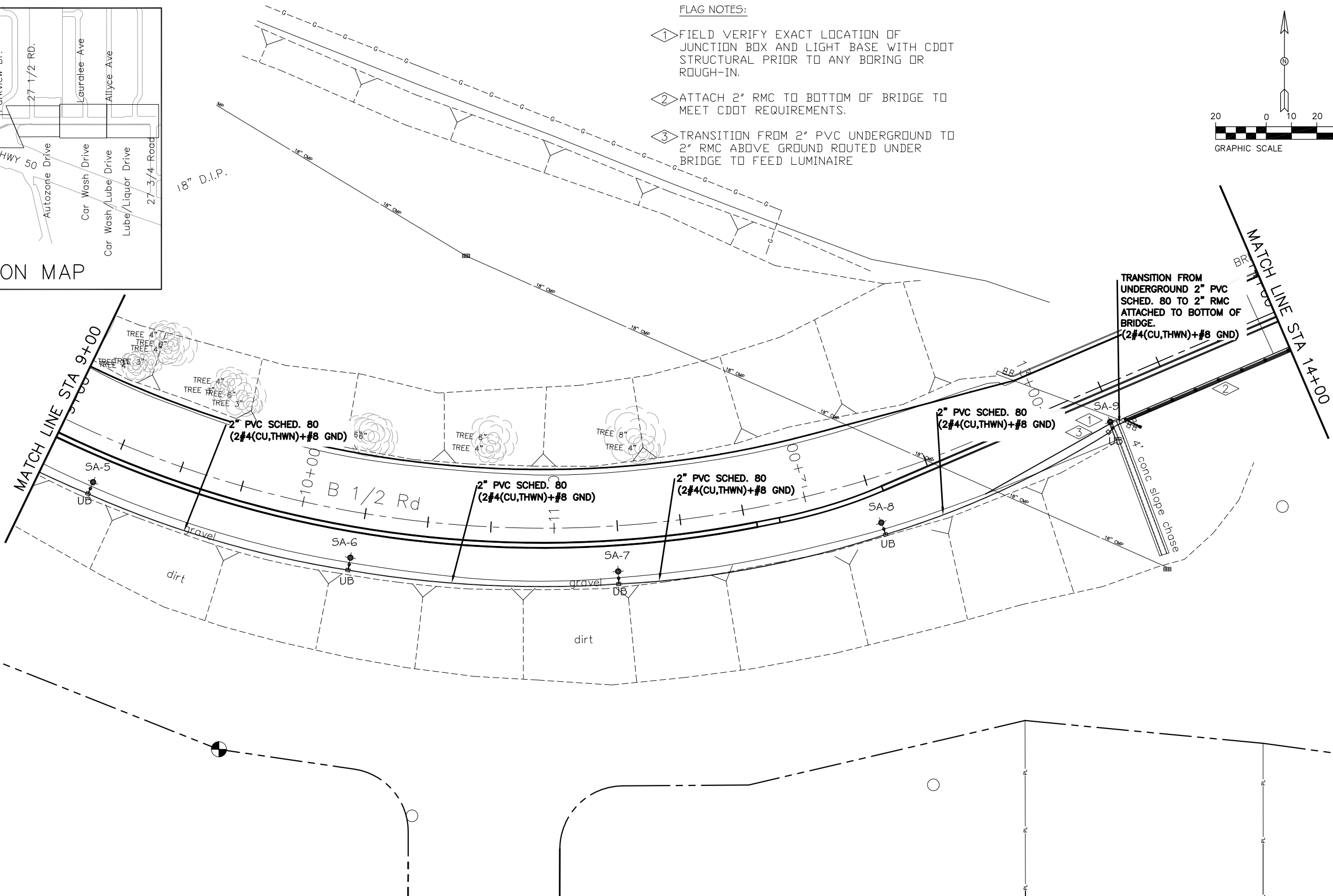
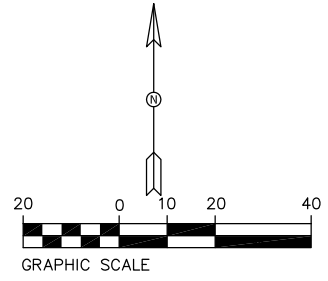
SITE ELECTRICAL PLAN
 Sta. 4+50 TO 9+00
 Designer: AJM
 Detailer: AJM
 LIGHTING
 Structure Numbers
 Subset Sheets: LE3 of 13

Project No./Code
 TAP M555-032
 20736
 Sheet Number



FLAG NOTES:

- 1 FIELD VERIFY EXACT LOCATION OF JUNCTION BOX AND LIGHT BASE WITH CDOT STRUCTURAL PRIOR TO ANY BORING OR ROUGH-IN.
- 2 ATTACH 2" RMC TO BOTTOM OF BRIDGE TO MEET CDOT REQUIREMENTS.
- 3 TRANSITION FROM 2" PVC UNDERGROUND TO 2" RMC ABOVE GROUND ROUTED UNDER BRIDGE TO FEED LUMINAIRE



Print Date: 8-15-2016

File Name:
 Horiz. Scale: AS SHOWN Vert. Scale: NA
 Unit Information: City of GJ Unit Leader Initials: LC
 ACM CONSULTING AND ENGINEERING
 PH: (970) 245-7292
 EMAIL: JOELM@ACMENGRS.COM

0000

Sheet Revisions

Date:	Comments	Init.



As Constructed

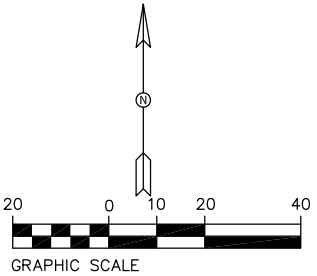
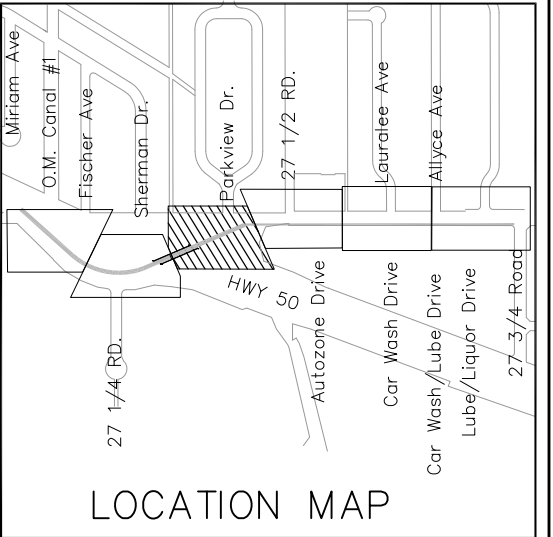
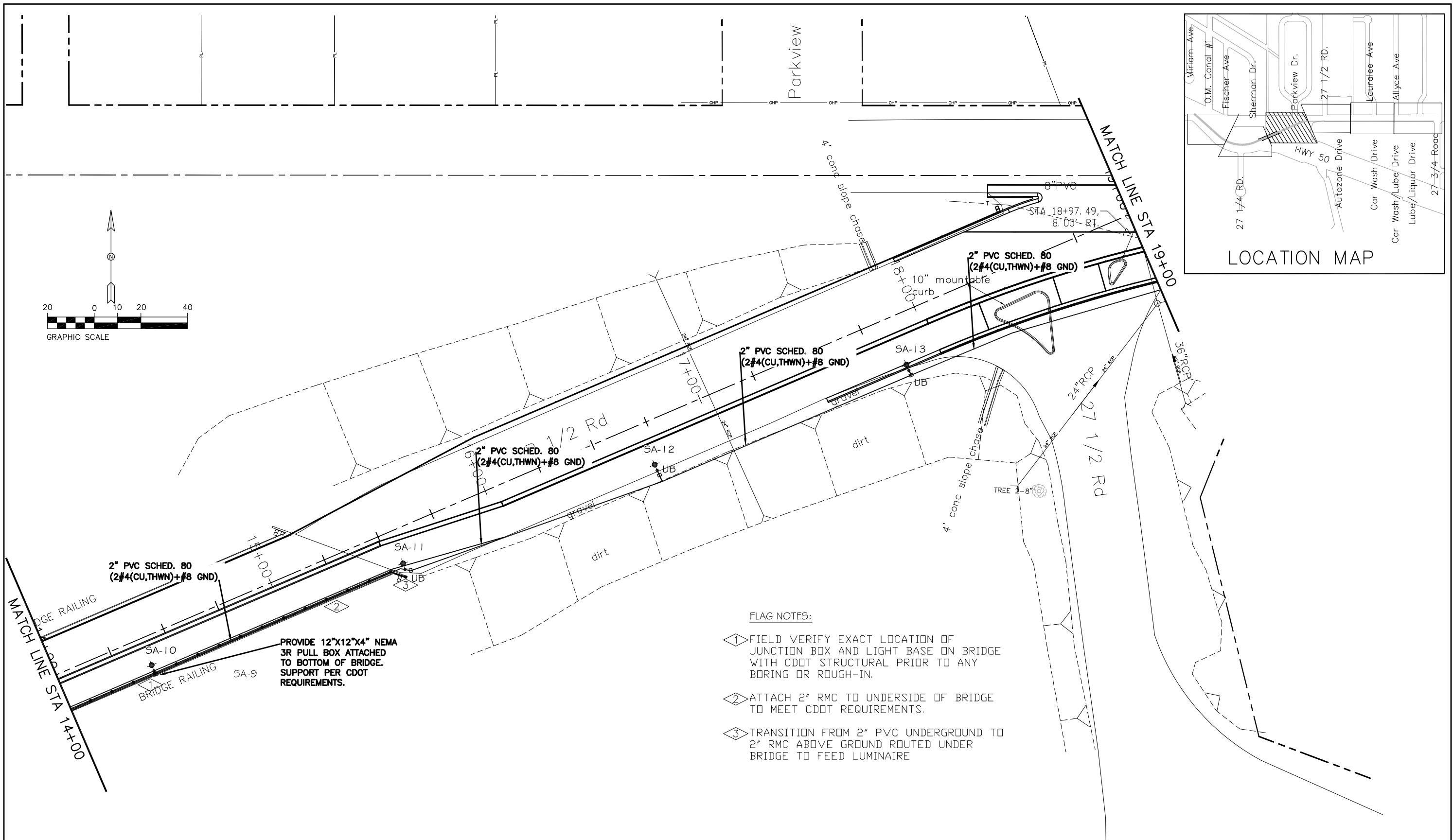
No Revisions:
 Revised:
 Void:

SITE ELECTRICAL PLAN
 Sta. 9+00 TO 14+00

Designer: AJM
 Detailer: AJM
 LIGHTING
 Structure Numbers
 Subset Sheets: LE4 of 13

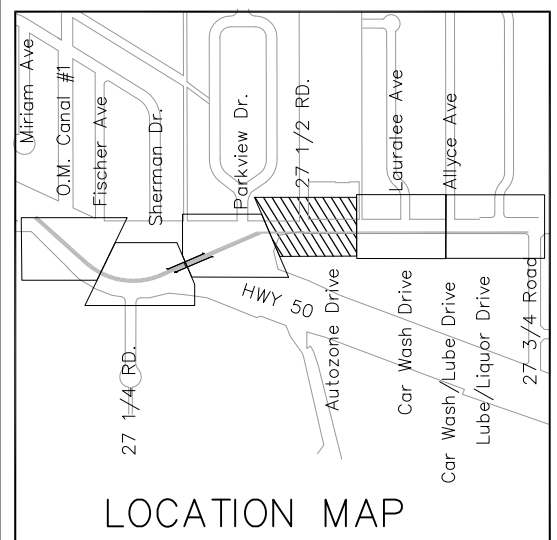
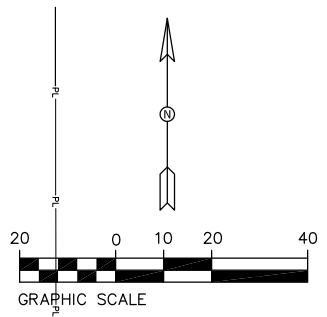
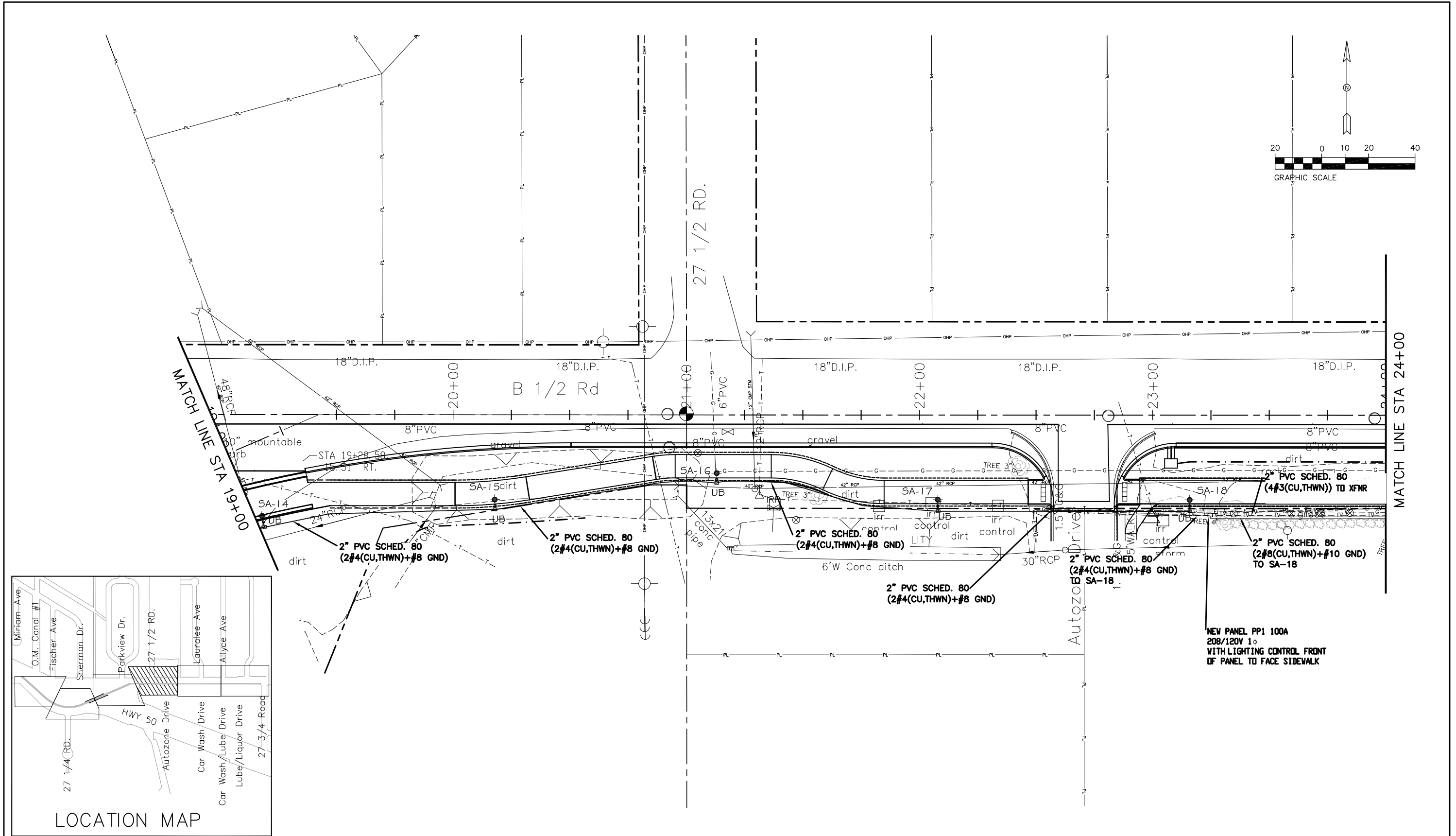
Project No./Code

TAP M555-032
 20736
 Sheet Number



- FLAG NOTES:
- ① FIELD VERIFY EXACT LOCATION OF JUNCTION BOX AND LIGHT BASE ON BRIDGE WITH CDOT STRUCTURAL PRIOR TO ANY BORING OR ROUGH-IN.
 - ② ATTACH 2" RMC TO UNDERSIDE OF BRIDGE TO MEET CDOT REQUIREMENTS.
 - ③ TRANSITION FROM 2" PVC UNDERGROUND TO 2" RMC ABOVE GROUND ROUTED UNDER BRIDGE TO FEED LUMINAIRE

Print Date: 8-15-2016	Sheet Revisions				As Constructed	SITE ELECTRICAL PLAN		Project No./Code
File Name:	Date:	Comments:	Init.:		No Revisions:	Sta. 14+00 TO 19+00		TAP M555-032
Horiz. Scale: AS SHOWN					Revised:	Designer: AJM	Structure Numbers:	20736
Unit Information: City of GJ Unit Leader Initials: LC					Void:	Detailer: AJM	Subset Sheets: LE5 of 13	Sheet Number
ACM CONSULTING AND ENGINEERING PH: (970) 245-7292 EMAIL: JOELM@ACMENGRS.COM						LIGHTING		



Print Date: 8-15-2016
 File Name:
 Horiz. Scale: AS SHOWN Vert. Scale: NA
 Unit Information: City of GJ Unit Leader Initials: LC
 ACM CONSULTING AND ENGINEERING
 PH: (970) 245-7292
 EMAIL: JOELM@ACMENGRS.COM

Sheet Revisions		
Date:	Comments	Init.

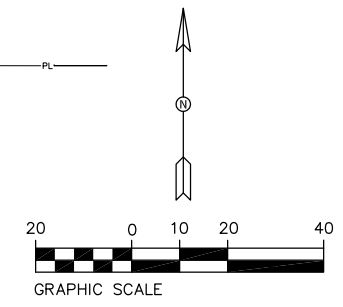


As Constructed
 No Revisions:
 Revised:
 Void:

SITE ELECTRICAL PLAN
 Sta. 19+00 TO 24+00
 Designer: AJM
 Detailer: AJM
 LIGHTING
 Structure Numbers
 Subset Sheets: LE6 of 13

Project No./Code
 TAP M555-032
 20736
 Sheet Number

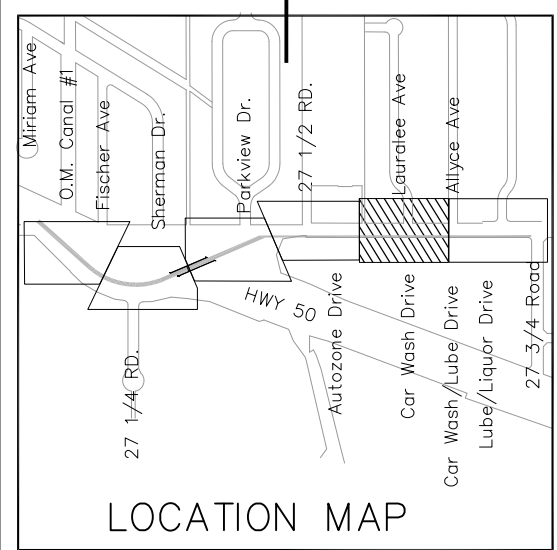
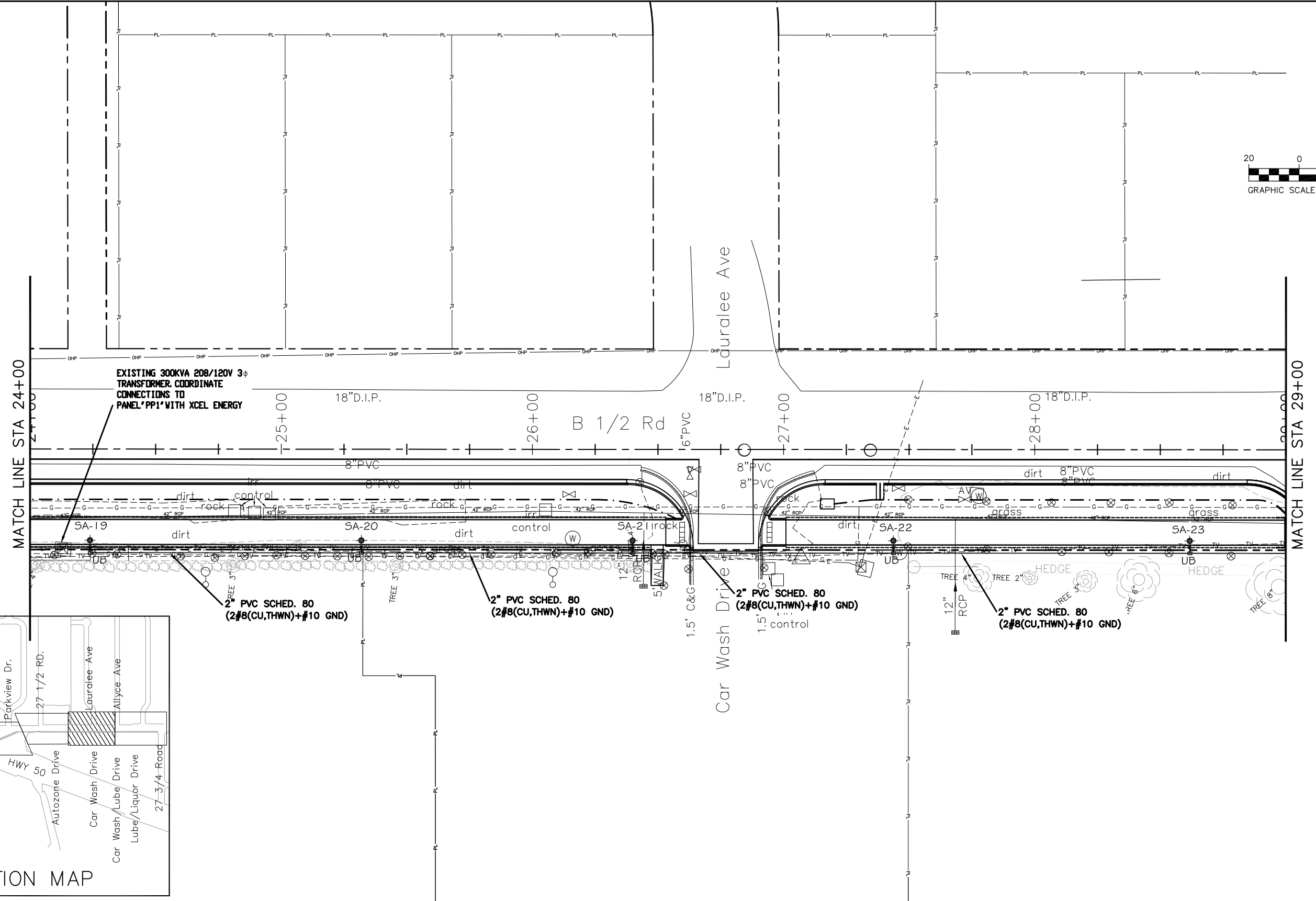
0000



MATCH LINE STA 24+00

MATCH LINE STA 29+00

EXISTING 300KVA 208/120V 3 ϕ
TRANSFORMER. COORDINATE
CONNECTIONS TO
PANEL 'PP1' WITH XCEL ENERGY



Print Date: 8-15-2016
File Name:
Horiz. Scale: AS SHOWN Vert. Scale: NA
Unit Information: City of GJ Unit Leader Initials: LC
ACM CONSULTING AND ENGINEERING
PH: (970) 245-7292
EMAIL: JOELM@ACMENGRS.COM

0000

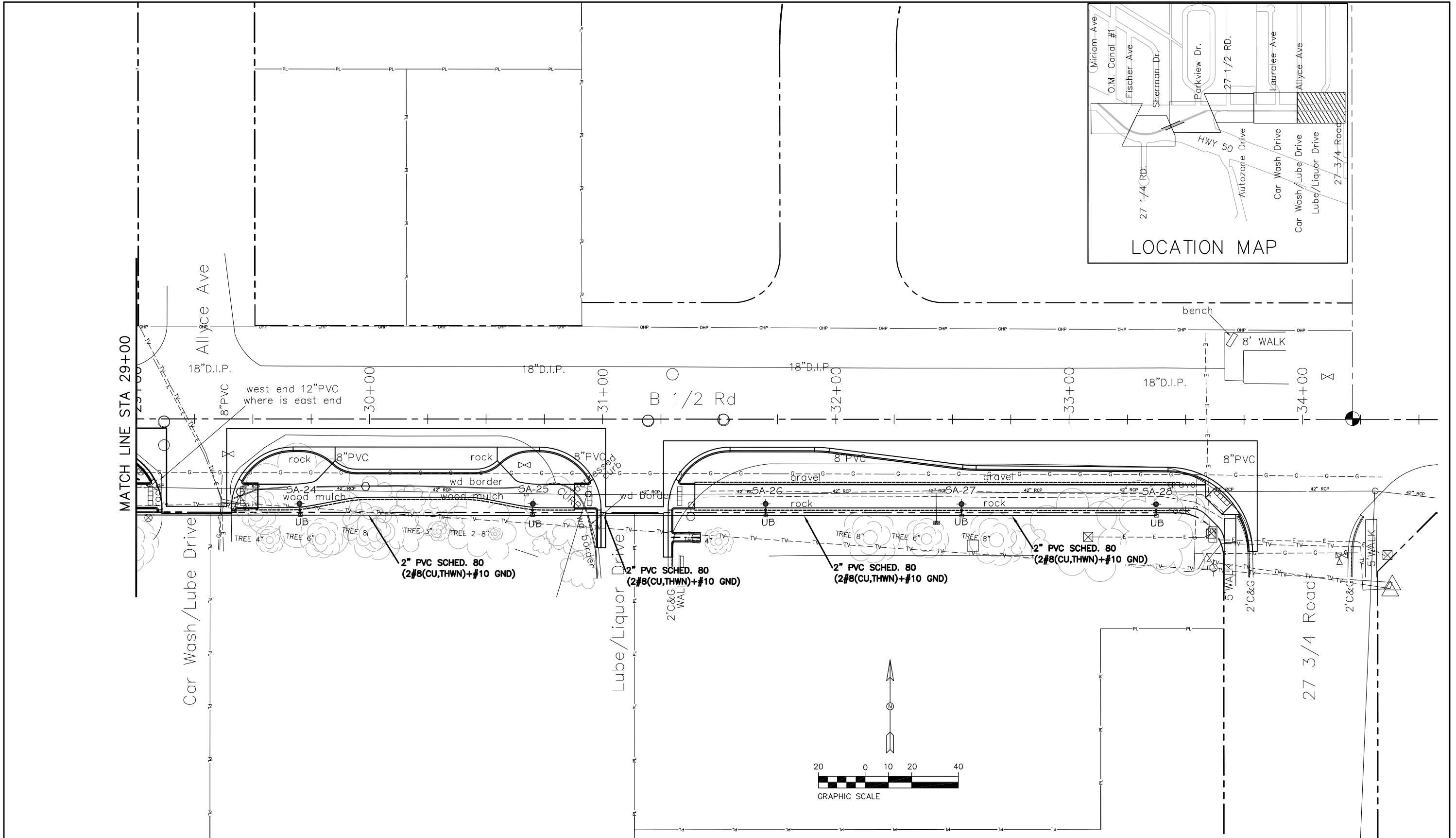
Sheet Revisions		
Date:	Comments	Init.



As Constructed
No Revisions:
Revised:
Void:

SITE ELECTRICAL PLAN Sta. 24+00 TO 29+00	
Designer: AJM	Structure Numbers
Detailer: AJM	
LIGHTING	Subset Sheets: LE7 of 13

Project No./Code
TAP M555-032
20736
Sheet Number



Print Date: 8-15-2016
 File Name:
 Horiz. Scale: AS SHOWN Vert. Scale: NA
 Unit Information: City of GJ Unit Leader Initials: LC
 ACM CONSULTING AND ENGINEERING
 PH: (970) 245-7292
 EMAIL: JOELM@ACMENGRS.COM

Sheet Revisions		
Date:	Comments	Init.

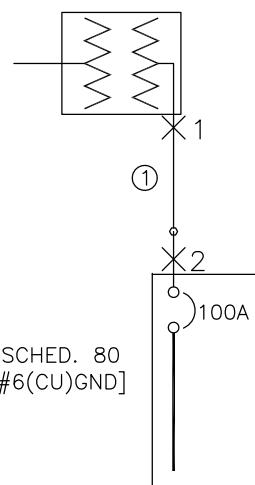


As Constructed
 No Revisions:
 Revised:
 Void:

SITE ELECTRICAL PLAN
 Sta. 29+00 TO 34+00
 Designer: AJM
 Detailer: AJM
 LIGHTING
 Structure Numbers
 Subset Sheets: LE8 of 13

Project No./Code
 TAP M555-032
 20736
 Sheet Number

EXISTING PAD MOUNTED TRANSFORMER 300KVA 208/120 VOLT, 1PH



CABLE LEGEND

① 1 SET(S) [2" PVC SCHED. 80 (3#3(CU, THWN)+1#6(CU)GND)]

NEW MILBANK POWER PEDESTAL #CP3B5110A22SL1 NEMA 3R

PP1
100A MCB 32CT SWITCHED AND UN-SWITCHED AS SHOWN 208/120V 1PH, 3W

ONE-LINE DIAGRAM

SHORT CIRCUIT SCHEDULE		
TAG	AIC	LENGTH (FT)
X1	42940	0
X2	4469	93.1

GENERAL NOTES:

- IN AS MUCH AS DESIGN REQUIRES THAT CERTAIN ASSUMPTIONS BE MADE REGARDING EXISTING CONDITIONS, AND BECAUSE SOME OF THESE ASSUMPTIONS CANNOT BE VERIFIED. FIELD COORDINATION DURING CONSTRUCTION SERVICES IS IMPERATIVE. CONTRACTORS BIDDING THIS WORK MUST MAKE REASONABLE ALLOWANCES FOR UNFORESEEN CONTINGENCIES.
- THE SERVING ELECTRICAL ASSOCIATION SHALL ADVISE THE OWNER/ENGINEER PRIOR TO SERVICE MODIFICATION REQUIRING COST TO THE OWNER.
- REFERENCE CIVIL AND STRUCTURAL DRAWING PLANS FOR COORDINATION AND LOCATION OF ALL UNDER GROUND SYSTEMS.
- ALL WORK SHALL BE COORDINATED WITH OTHER TRADES AS REQUIRED: REFERENCE CIVIL STRUCTURAL DRAWINGS.
- ALL WIRING IS SHOWN DIAGRAMMATICALLY ON DRAWINGS, FIELD VERIFY ALL CONDITIONS PRIOR TO ROUGH-IN.
- ALL ELECTRICAL WORK SHALL COMPLY WITH THE LATEST EDITION OF NATIONAL ELECTRICAL CODE AND ALL APPLICABLE LOCAL CODES.
- ALL WIRE TO BE #10 UNLESS NOTED OTHERWISE.
- CONDUCTOR COUNT IS SHOWN FOR REFERENCE ONLY. CONTRACTOR SHALL ENSURE THAT ANY AND ALL DEVICES AND EQUIPMENT ARE CIRCUITED PROPERLY. CONTRACTOR SHALL ENSURE THAT NO EQUIPMENT OR DEVICES ARE COMBINED OTHER THAN WHAT IS DEPICTED.
- FIELD VERIFY ALL DIMENSIONS, DO NOT SCALE DRAWINGS.
- COORDINATE INSTALLATION OF METER AND ELECTRICAL REQUIREMENTS WITH XCEL ENERGY.
- NEW PEDESTAL PP1 MUST MEET ALL XCEL ENERGY REQUIREMENTS I.E. COLD SEQUENCE PADLOCK SLIP LATCH ON METER COVER, HOLD OPEN BAR ON METER HOOD.

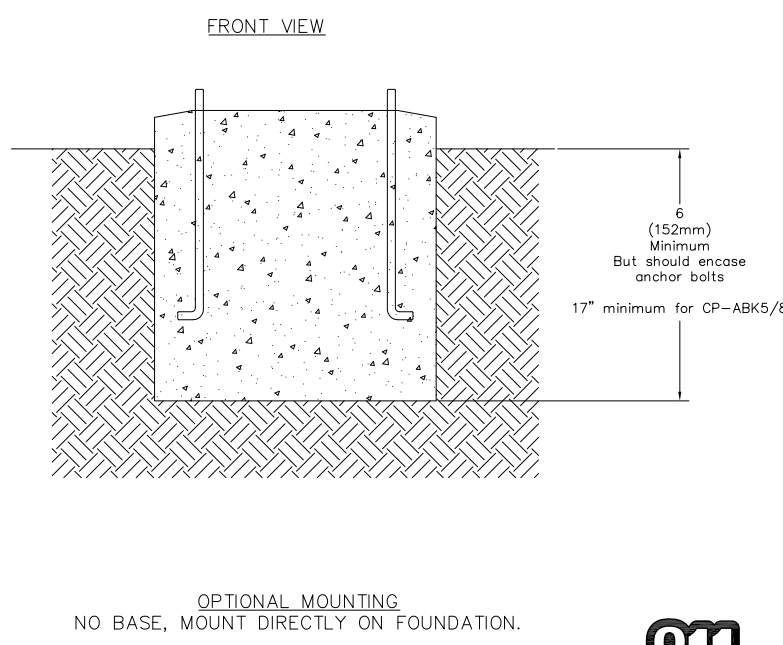
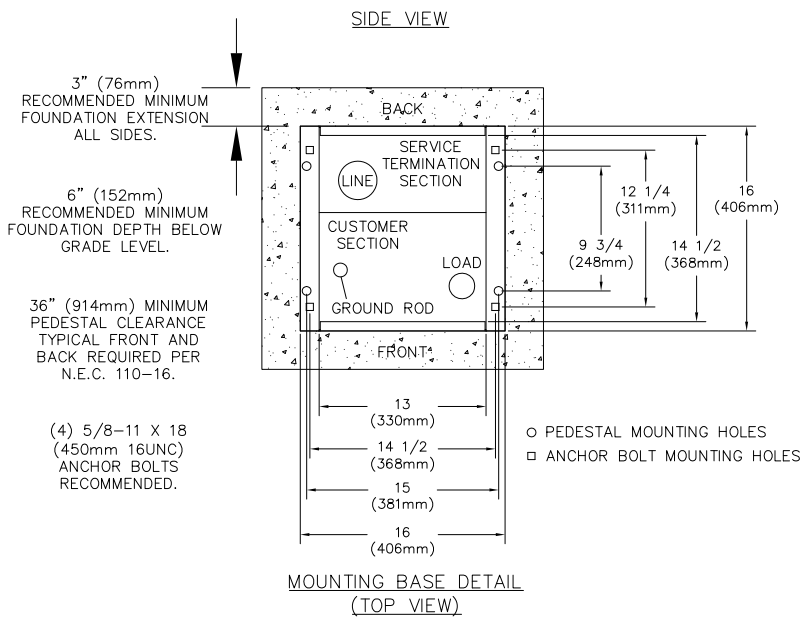
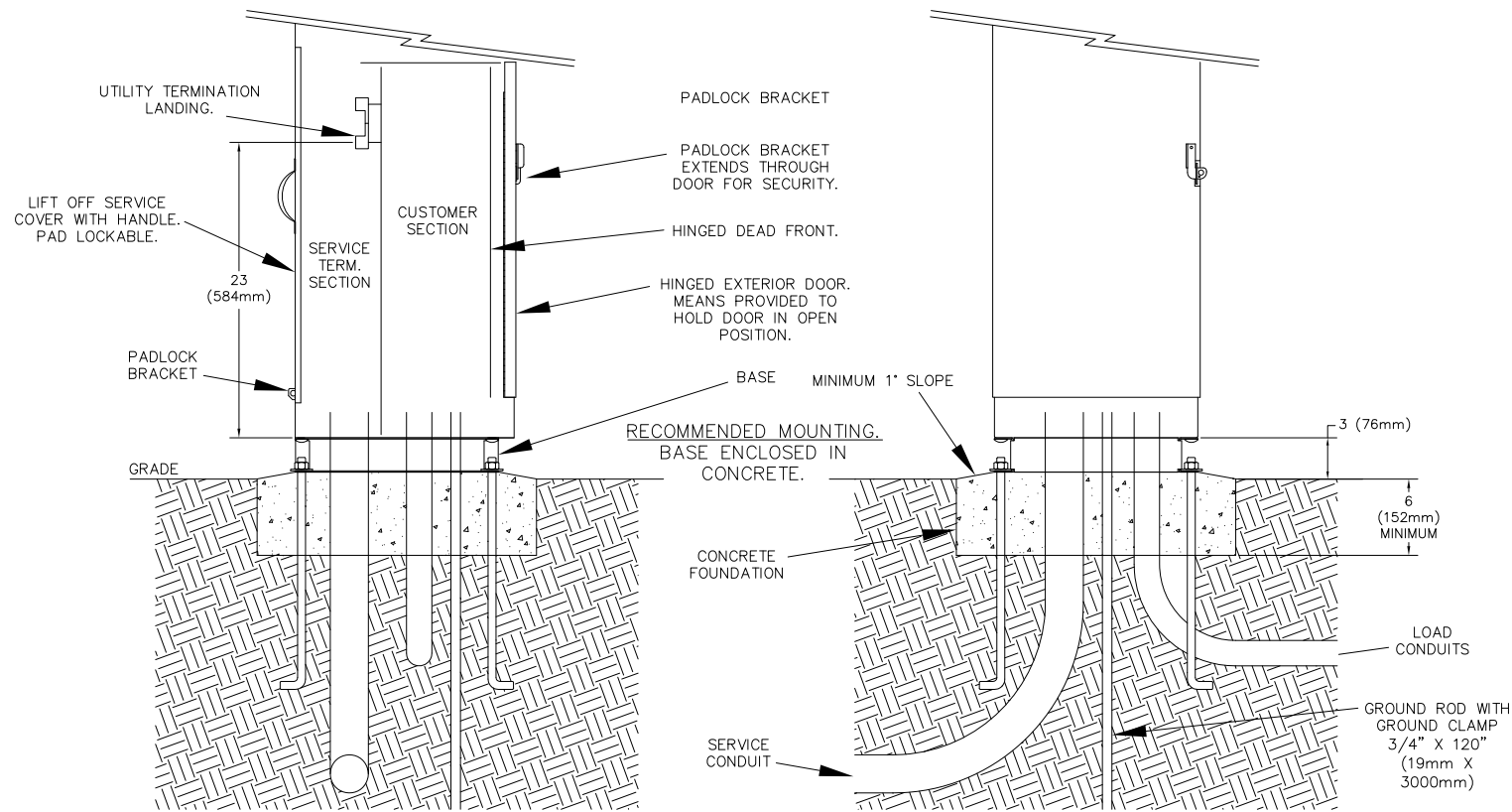
PANEL: BUS-PP1	DC DEVICE TYPE: Breaker	ENCLOSURE: NEMA 3R	MAINS(A): BKR	CONTINUOUS(A): 100
LOCATION: BUS-XFMR	DEVICE FAMILY: Bolt On	MOUNTING: Surface	WIRING: Single-Phase 3-Wire	BUS SC RATING(A): 12000
FED FROM: BUS-PP1		VOLTAGE: 208/120		FAULT CURRENT(A): 4469

UN-SWITCHED CIRCUIT DIRECTORY														
DC AMPS P	NOTES	DESCRIPTION	DEMAND CODE	VA	CKT	PHASE A	LOADS B	VA C	CKT	VA	DEMAND CODE	DESCRIPTION	NOTES	DC AMPS P
100 2		MAIN	GENERAL	-	0	1	180	150	2	180	GENERAL	CONTROL POWER		15 1
" "		" "				3			4	300	GENERAL	SWITCHED LC CONTROL		60 2
						5			6	-		" "		" "
						7			8					
						9			10					
						11			12					
						13			14					
						15			16					
SWITCHED CIRCUIT DIRECTORY														
20 2		CBL-SW	NONE	1188	17	924	924	18	660	NONE	CBL-NE			20 2
" "		" "		-	19			20	-		" "			" "
					21			22						
					23			24						
					25			26						
					27			28						
					29			30						
					31			32						
ALL CONNECTED	KVA	3P AVE	AMPS	* PHASE TOTALS	VA	AMPS	BUS TOTALS	KVA						
TOTAL CONNECTED	2.25		6.2	* A-N	1204.4	10.0	CONNECTED	2.25						
TOTAL DEMAND	2.25		6.2	* B-N	1047.9	8.7	DEMAND	2.25						



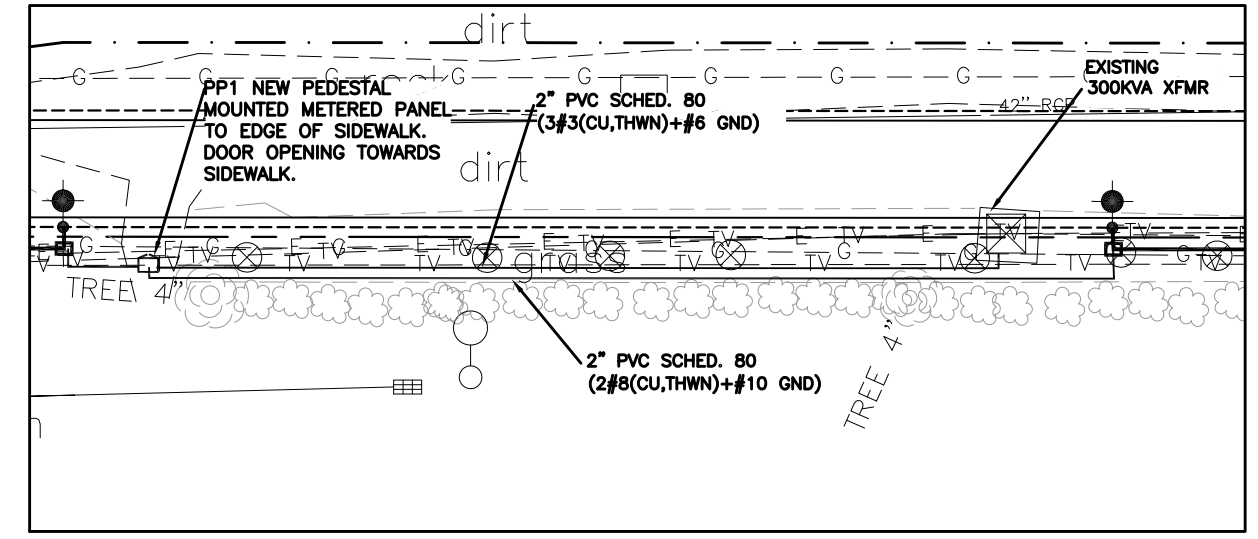
Know what's below. Call before you dig.

Print Date: 8-15-2016	Sheet Revisions				As Constructed	ELECTRICAL DETAILS, ONE-LINE		Project No./Code
File Name:	Date:	Comments:	Init.		No Revisions:			TAP M555-032
Horiz. Scale: AS SHOWN	Vert. Scale: NA				Revised:	Designer: AJM	Structure Numbers:	20736
Unit Information: City of GJ Unit Leader Initials: LC					Void:	Detailer: AJM	Subset Sheets: LE9 of 13	Sheet Number
ACM CONSULTING AND ENGINEERING PH: (970) 245-7292 EMAIL: JOELM@ACMENGRS.COM						LIGHTING		



NOTES

- CONTROL CABINET SHALL BE U/L LISTED "INDUSTRIAL CONTROL PANEL" PER UL 508.
- CONSTRUCTION SHALL BE NEMA 3R, 12 GA. A60 STEEL POWDER COATED MINT GREEN WITH PHOTO ELECTRIC CELL IN SERVICE CABINET. ELECTRICAL CONTRACTOR TO PROVIDE PHOTOCCELL.
- VOLTAGE RATINGS OF SERVICE EQUIPMENT SHALL CONFORM TO THE SERVICE VOLTAGES INDICATED ON THE PLANS.
- SERVICE EQUIPMENT ENCLOSURE AND METERING EQUIPMENT SHALL MEET THE REQUIREMENTS OF THE SERVING UTILITY. WHEN THE SERVING UTILITY PROVIDES BOTH METERED AND UN-METERED CIRCUITS, A SEPARATE BUS SHALL BE PROVIDED FOR EACH CIRCUIT. THE METER AREA SHALL HAVE A SEALING, LOCKABLE, RAIN TIGHT COVER THAT CAN BE REMOVED WITHOUT THE USE OF TOOLS.
- SERVICE EQUIPMENT SHALL BE FACTORY WIRED AND CONFORM TO NEMA STANDARDS.
- THE EXTERIOR DOOR SHALL HAVE PROVISIONS FOR PADLOCKING. THE PADLOCK HOLE SHALL BE A MINIMUM DIAMETER OF 11mm.
- ALL TERMINALS FOR INCOMING SERVICE CONDUCTORS SHALL BE COMPATIBLE WITH EITHER COPPER OR ALUMINUM CONDUCTORS SIZED TO SUIT THE CONDUCTORS SHOWN ON THE PLAN. TERMINAL LUGS SHALL BE COPPER OR TIN-PLATED ALUMINUM. SOLID NEUTRAL TERMINAL STRIP SHALL BE RATED 125A UNLESS OTHERWISE SPECIFIED AND FOR USE WITH COPPER OR ALUMINUM CONDUCTORS. THE TERMINAL SHOULD INCLUDE BUT NOT BE LIMITED TO:
 - INCOMING TERMINALS (LANDING LUGS)
 - NEUTRAL LUGS
 - SOLID NEUTRAL TERMINAL STRIP.
 - TERMINAL STRIPS FOR CONDUCTORS WITHIN THE ENCLOSURE.
- AT LEAST 4 STANDARD SINGLE POLE 208V AND 1 SINGLE POLE 120 CIRCUIT BREAKER SPACES (20mm NOMINAL) SHALL BE PROVIDED FOR BRANCH CIRCUITS. CIRCUIT BREAKER INTERIORS SHALL BE COPPER. INTERIORS SHALL ACCEPT PLUG-IN OR CABLE-IN/ CABLE-OUT CIRCUIT BREAKERS.
- PLUG-IN CIRCUIT BREAKERS MAY BE MOUNTED IN THE VERTICAL OR HORIZONTAL POSITION. CABLE-IN/ CABLE-OUT CIRCUIT BREAKERS SHALL BE MOUNTED IN THE VERTICAL POSITION.
- FASTENERS ON THE EXTERIOR OF THE ENCLOSURE SHALL BE VANDAL RESISTANT AND SHALL NOT BE REMOVABLE FROM THE EXTERIOR. ALL NUTS, BOLTS, SCREWS, WASHERS, AND HINGES SHALL BE STAINLESS STEEL.
- PHENOLIC NAME PLATES SHALL BE PROVIDED AS REQUIRED.
- A PLASTIC COVERED WIRING DIAGRAM SHALL BE ATTACHED TO THE INSIDE OF THE FRONT DOOR.
- FOUNDATION SHALL EXTEND 50mm MINIMUM BEYOND EDGE OF ENCLOSURE.



B TYPICAL POWER PEDESTAL/LIGHTING CONTROL CENTER (SPECIAL) PLAN
1 NOT TO SCALE

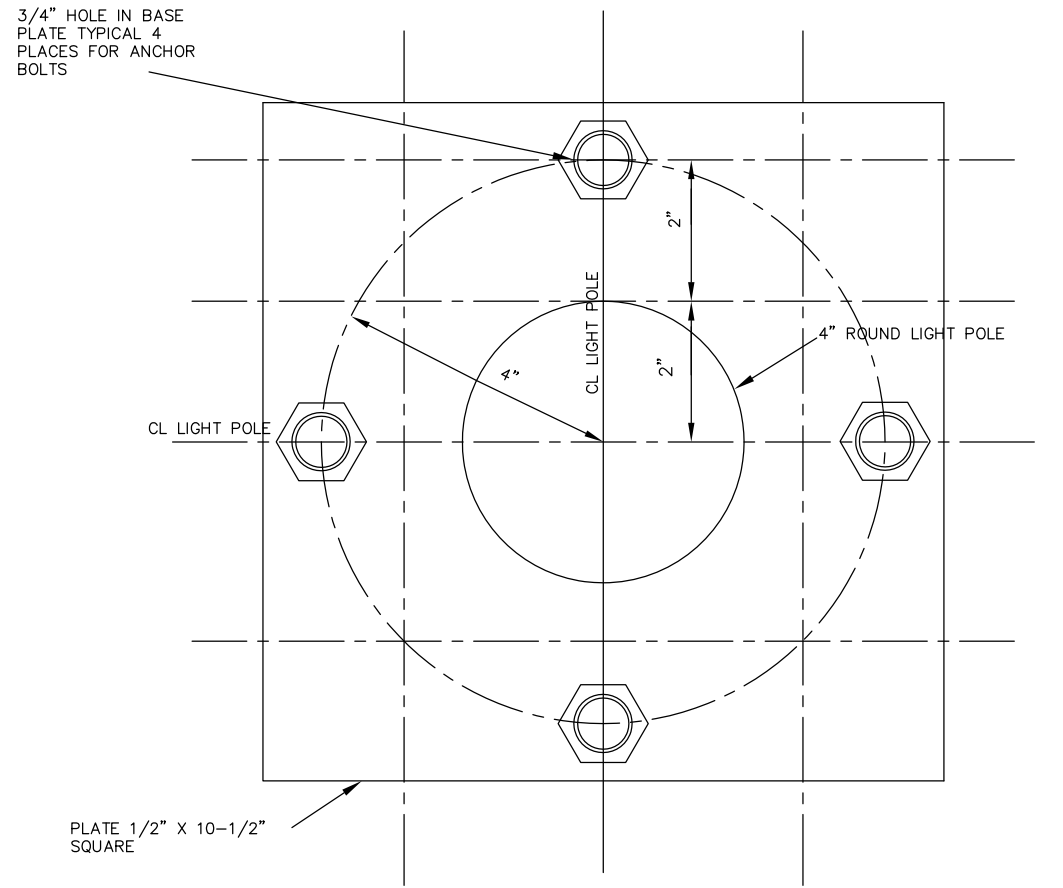
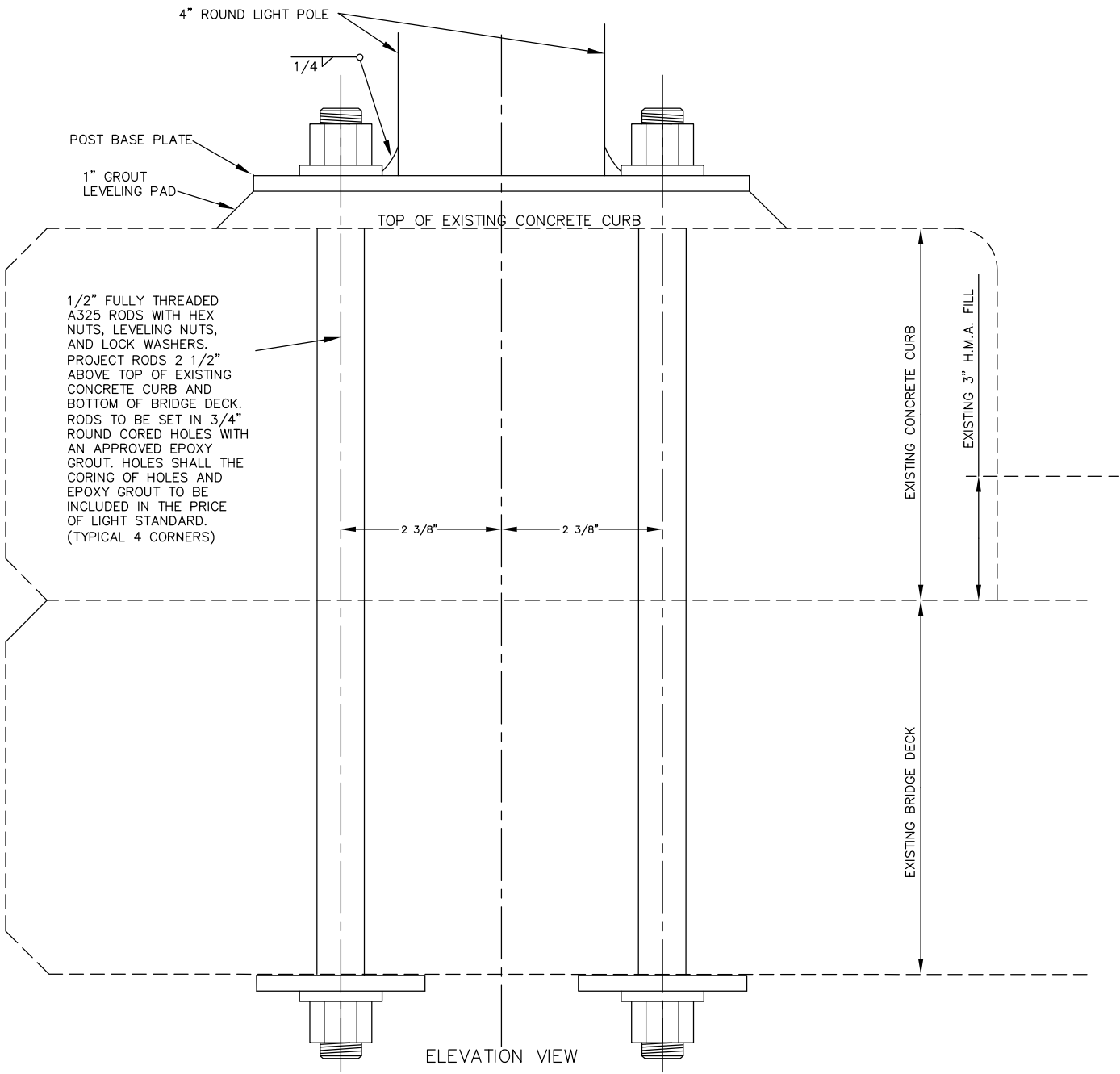
B TYPICAL LIGHTING CONTROL CENTER AND POWER PEDESTAL(SPECIAL) LOCATION PLAN
2 NOT TO SCALE



Print Date: 8-15-2016	Sheet Revisions			CITY OF Grand Junction COLORADO	As Constructed	LIGHTING CONTROL CENTER DETAILS		Project No./Code
File Name:	Date:	Comments:	Init.:		No Revisions:			TAP M555-032
Horiz. Scale: AS SHOWN					Revised:	Designer: AJM	Structure Numbers	20736
Unit Information: City of GJ Unit Leader Initials: LC					Void:	Detailer: AJM	Subset Sheets: LE10 of 13	Sheet Number
ACM CONSULTING AND ENGINEERING PH: (970) 245-7292 EMAIL: JOELM@ACMENGRS.COM								

NOTES

- COORDINATE INSTALLATION OF POLE AND LUMINAIRE WITH CDOT STRUCTURAL ENGINEER PRIOR TO BORING AND INSTALLATION OF LIGHT FOUNDATION AND 2" ELECTRICAL ACCESS.
- OBTAIN AND MATCH TEMPLATE OF POLE MOUNTING PATTERN FROM POLE PROVIDER PRIOR TO CASTING LIGHT FOUNDATION FOR POLE LOCATED ON OVERPASS.
- POLE ON OVERPASS TO HAVE A TOTAL HEIGHT SUCH THAT BOTTOM OF LUMINAIRE IS 12' ABOVE PATH SURFACE ON OVER PASS.



C TYPICAL POLE BASE PLATE
2 NOT TO SCALE

C TYPICAL LIGHT POLE CONNECTION TO EXISTING CONCRETE CURB & BRIDGE DECK
1 NOT TO SCALE

Print Date: 8-15-2016
 File Name:
 Horiz. Scale: AS SHOWN Vert. Scale: NA
 Unit Information: City of GJ Unit Leader Initials: LC
 ACM CONSULTING AND ENGINEERING
 PH: (970) 245-7292
 EMAIL: JOELM@ACMENGRS.COM

Sheet Revisions		
Date:	Comments	Init.



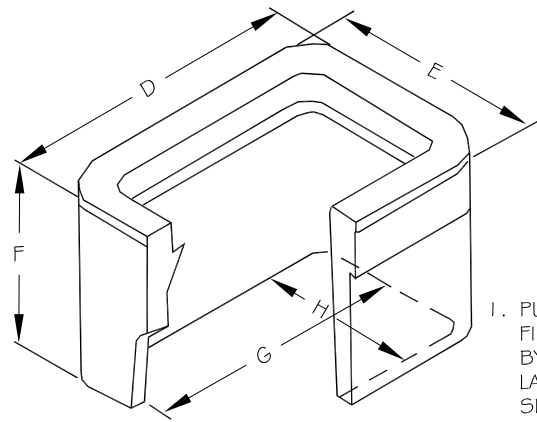
As Constructed
No Revisions:
Revised:
Void:

LIGHT POLE BRIDGE CONNECTION DETAILS		
Designer: AJM	Structure Numbers	
Detailer: AJM		
LIGHTING	Subset Sheets: LE11 of 13	

Project No./Code
TAP M555-032
20736
Sheet Number

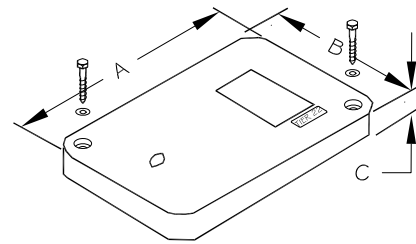


Know what's below.
Call before you dig.



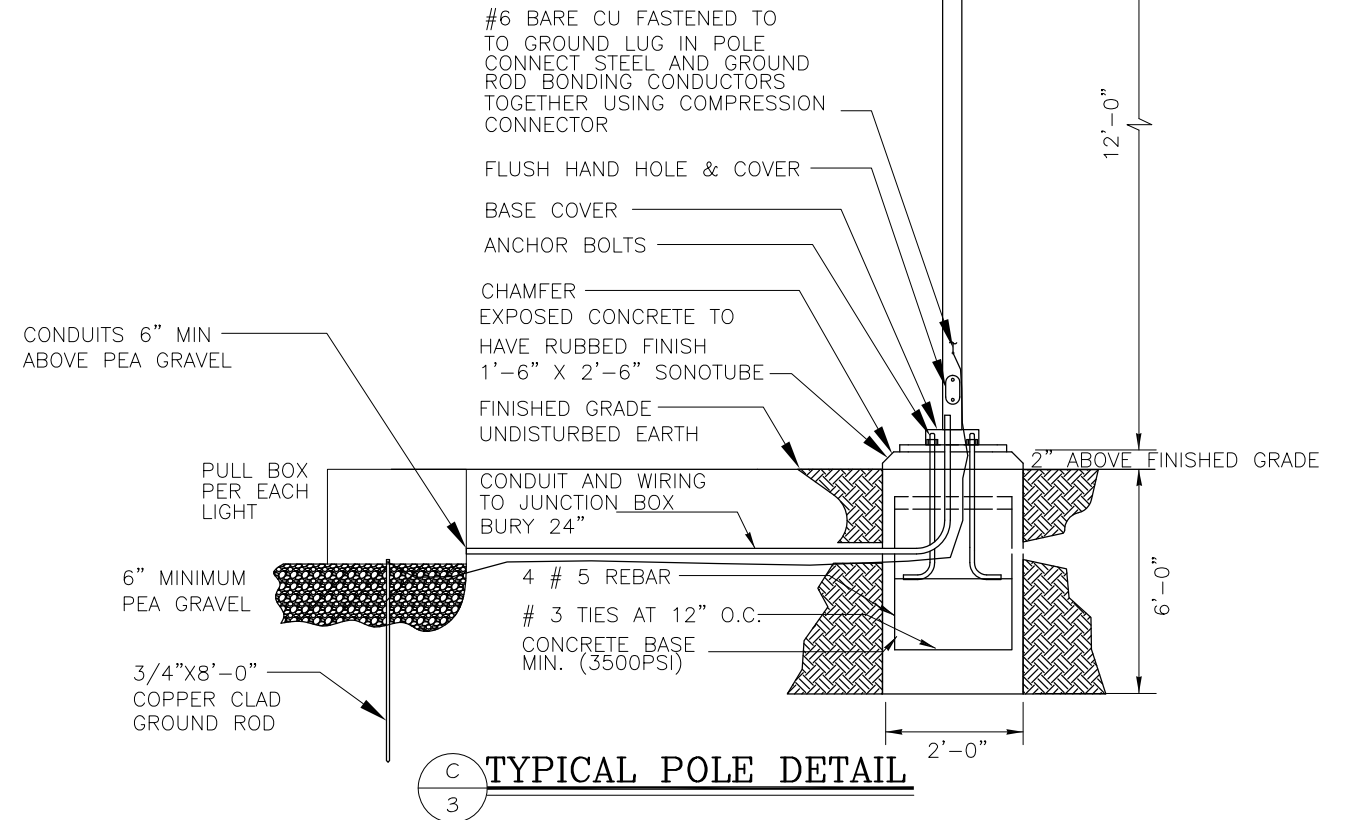
UTILITY BOX DIMENSIONS

- A 18-1/8"
- B 11-1/4"
- C 1-1/4"
- D 20-1/2"
- E 13-3/8"
- F 12"
- G 15-3/4"
- H 8-7/8"



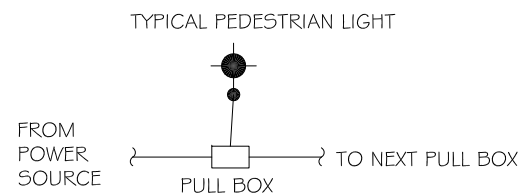
- PULL BOXES, PULL BOX COVERS AND EXTENSIONS SHALL BE MADE OF FIBERGLASS REINFORCED POLYMER CONCRETE. PULL BOXES SHALL BE VERIFIED BY A 3RD PARTY NATIONALLY RECOGNIZED INDEPENDENT TESTING LABORATORY AS MEETING ALL TEST PROVISIONS OF THE LATEST ANSI/SCTE 77 SPECIFICATION FOR UNDERGROUND ENCLOSURE INTEGRITY, TIER 22 RATING. CERTIFICATION DOCUMENTS SHALL BE SUBMITTED WITH MATERIALS SUBMITTALS. THE PULL BOX SHALL HAVE A DETACHABLE COVER WITH A SKID RESISTANT SURFACE AND HAVE THE WORDS ELECTRICAL CAST INTO THE SURFACE. PAINTING THE WORDS SHALL NOT BE ACCEPTED. MARKINGS SHOWING THE TIER 22 RATING MUST BE LABELED OR STENCILED ON THE INSIDE AND OUTSIDE OF THE BOX AND THE ON THE UNDER SIDE OF THE COVER. THE COVER SHALL BE ATTACHED TO THE PULL BOX BODY BY MEANS OF A MINIMUM 3/8 - 7 UNIFIED NATIONAL COURSE (UNC) STAINLESS STEEL PENTA HEAD BOLTS AND SHALL HAVE TWO LIFT SLOTS TO AID IN THE REMOVAL OF THE LID.
- PULL SLOTS SHALL BE RATED FOR A MINIMUM PULL OUT OF 3,000 POUNDS. MAGNESIUM CHLORIDE TESTS SHOULD BE PERFORMED IN ACCORDANCE WITH THE LATEST ANSI/SCTE 77 SPECIFICATION FOR UNDERGROUND ENCLOSURE INTEGRITY, TIER 22 RATING.
- PROVIDE AT LEAST 6 INCHES OF PEA GRAVEL MEASURED FROM BOTTOM OF PULL BOX FOR DRAINAGE. PEA GRAVEL IS INCLUDED IN PULL BOX PAY ITEM.

C
I UTILITY BOX DETAIL



POLE DETAIL NOTES:

- ORDER STEINBERG URBAN LINE 4" ROUND STRAIGHT STEEL POLES, #450P414/BK. OBTAIN POLE MOUNTING TEMPLATE PATTERN FROM MANUFACTURER PRIOR TO ROUGH-IN.
- PROVIDE EACH PEDESTRIAN LIGHT INSTALLED IN THIS CONTRACT WITH J-BOX.
- MOUNT ALL LIGHTS PERPENDICULAR TO PATHWAY TO MAXIMIZE LIGHT ON PATHWAY.
- GROUND ROD TO BE LOCATED IN PULLBOX TOP OF GROUND ROD TO BE SO THAT TOP IS EVEN WITH PEA GRAVEL.
- AT EACH POLE BASE HAND HOLE, PROVIDE A BREAKAWAY, WATERPROOF, IN-LINE FUSE HOLDER WITH FNQ-R 2A FUSE FOR HOT CONDUCTORS. BUSSMAN #HEY-AW-DRLC-J OR APPROVED EQUAL. COORDINATE ORDER WITH WIRE SIZES SHOWN ON DRAWING.
- LIGHT STANDARD FOUNDATION EMBEDMENT DEPTH, DIMENSIONS AND REINFORCEMENT PER CDOT M-613-1 STANDARD DETAIL.
- DIMENSION FOR ANCHOR BOLT SPACING BY POLE MANUFACTURER.



I. EACH LIGHT LOCATION TO HAVE PULL BOX

C
2 UTILITY BOX CONNECTION DETAIL

LUMINAIRE SCHEDULE PEDESTRIAN					
TYPE	MANUFACTURER MODEL NUMBER	APPROVAL	VOLTAGE MOUNTING # OF LAMPS	BALLAST LAMPE TYPE LAMP CAT. #	DESCRIPTION
SA	STERNBERG LIGHTING 1A-1527LED-R-SV1-4ARC35T2-MDL03-EZ/OAPT/450P414/BK	OWNER REQUESTED	208 POLE 1	ELECTRONIC LED 66 W	PEDESTRIAN LUMINAIRE, ARM MOUNTED, LED, CUTOFF, ORDER POLE SO THAT LAMP HEIGHT IS 12' AFG MEASURED AT BOTTOM OF LUMINAIRE. ORDER WITH OAPT ARM. POLE AND ARM COLOR TO MATCH. ORDER WITH 4" ROUND STRAIGHT ALUMINUM POLES.

Print Date: 8-15-2016

File Name:

Horiz. Scale: AS SHOWN

Vert. Scale: NA

Unit Information: City of GJ Unit Leader Initials: LC

ACM CONSULTING AND ENGINEERING
PH: (970) 245-7292
EMAIL: JOELM@ACMENGRS.COM

Sheet Revisions

Date:	Comments	Init.



As Constructed

No Revisions:

Revised:

Void:

LIGHTING DETAILS, SCHEDULES

Designer: AJM
Detailer: AJM

Structure Numbers

LIGHTING

Subset Sheets: LE12 of 13

Project No./Code

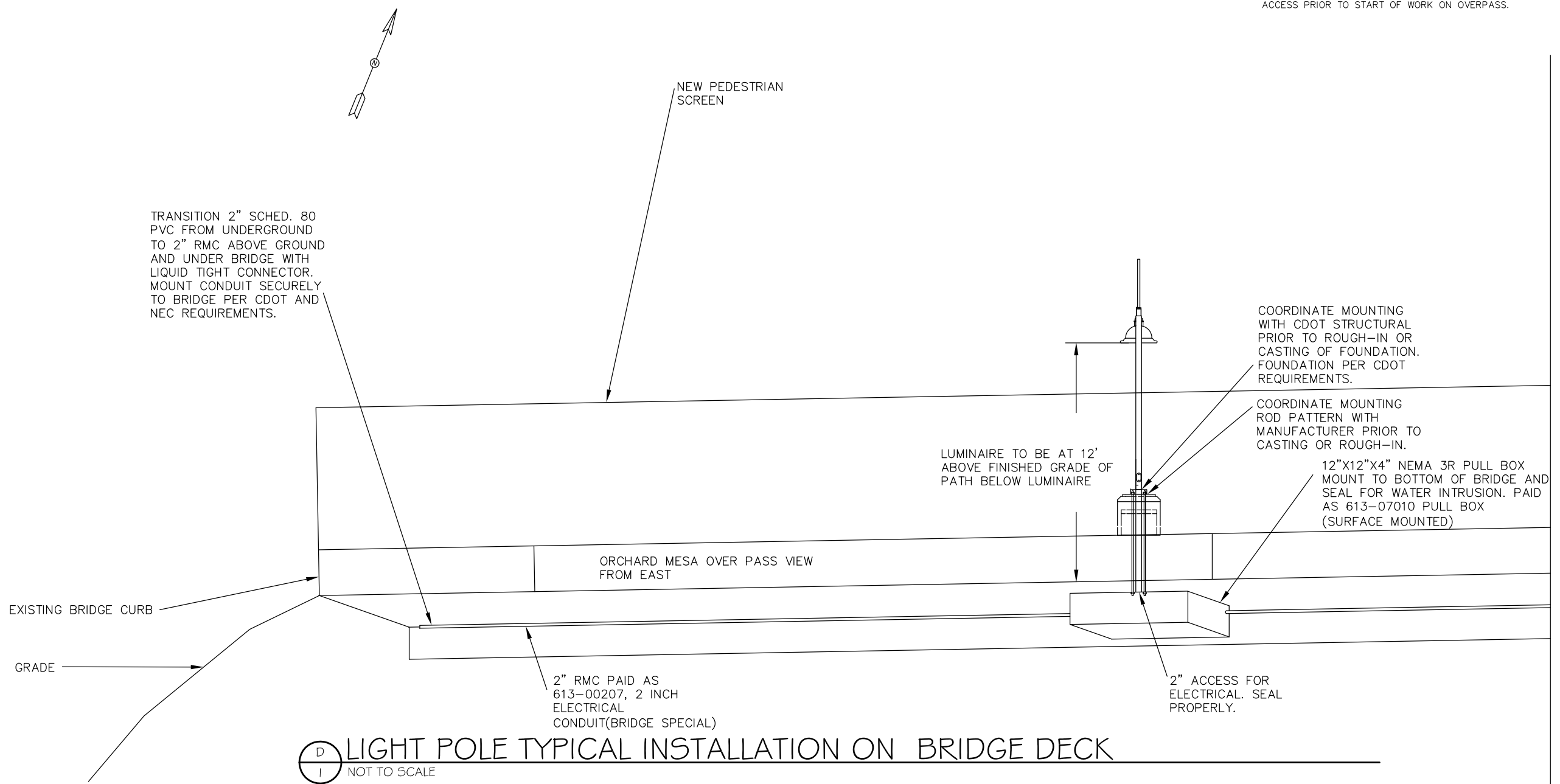
TAP M555-032

20736

Sheet Number

NOTES

1. FIELD VERIFY EXACT LOCATION WITH OWNER PRIOR TO ROUGH-IN.
2. COORDINATE WITH CDOT STRUCTURAL ENGINEER FOR BORING OF LIGHT FOUNDATION AND 2" ELECTRICAL ACCESS PRIOR TO START OF WORK ON OVERPASS.



D LIGHT POLE TYPICAL INSTALLATION ON BRIDGE DECK
I NOT TO SCALE

Print Date: 8-15-2016		Sheet Revisions				As Constructed		LIGHT POLE BRIDGE CONNECTION DETAILS		Project No./Code
File Name:		Date:	Comments:	Init.:		No Revisions:	Designer: AJM	Structure Numbers:	TAP M555-032	
Horiz. Scale: AS SHOWN						Revised:	Detailer: AJM		20736	
Unit Information: City of GJ Unit Leader Initials: LC						Void:	LIGHTING	Subset Sheets: LE13 of 13	Sheet Number	
ACM CONSULTING AND ENGINEERING PH: (970) 245-7292 EMAIL: JOELM@ACMENGRS.COM										