



Purchasing Division

ADDENDUM NO. 1

DATE: December 5, 2017
FROM: City of Grand Junction Purchasing Division
TO: All Offerors
RE: Professional Engineering Services for Parks Raw Water Irrigation Supply Phase I

Offerors responding to the above referenced solicitation are hereby instructed that the requirements have been clarified, modified, superseded and supplemented as to this date as hereinafter described.

Please make note of the following clarifications:

1. Q. Will the City be providing the required surveying for the project?
A. As stated in 4.3.1, City will provide any additional surveying required for the project.
2. Q. Who is responsible for Geotechnical services?
A. Geotechnical services shall be the responsibility of the Firm. For the purposes of the fee portion of the proposal anticipate four bores.
3. Q. Are existing pipes cast iron or steel? Please clarify.
A. -16 inch Cast iron from Station 7+00 through 52+00
-16 inch Cast iron or asbestos cement from Station 52+00 (Santa Clara) to 58+00 (Grand Mesa Ave)
-20 inch Cast Iron from 78+00 (Struthers and 5th Street) to 86+00 (Struthers and 7th Street)
-24 inch Steel from 86+00 to 98+00.
4. Q. Will the City be able to confirm the state of integrity of existing pipes?
A. City will work with the Firm on potential conflict areas, as noted by green circle areas on conceptual design, as well as verifying the integrity of the existing pipes.
5. Q. Does CDOT want "open trenches" or "boring"?
A. The initial discussion with CDOT was for open trenching. The selected Firm shall help determine the cost effectiveness of open trenching vs boring.
6. Q. Are "rights of ways" addressed for this project?
A. All rights of ways appear to be in order.
7. Q. Can the City provide "as-builts" for the reservoirs?
A. See Attached drawings:
 - a. Settling Basin
 - b. Improvements to Water Supply System Filter Plant Area – Asbuilt 1948
 - c. Duck Pond Park Lift Station Elimination – Water line Replacement Plans - 2005
8. Q. What type of outlet structure are you looking for?
A. Contractor is to core through wall, place and grout pipe and place a valve on the outside of wall.

9. Q. Will the facility be in operation year round?
- A. The facility is anticipated to be in service from early March through November. Plan must be able to winterize any exposed pipe. Isolation valves on either side are required.
10. Q. Are there "as-builts" for the bridge?
- A. CDOT maintains as-builts for all of their bridges. If selected, Region 3 staff can provide digital copies to the Firm.
- B. Additional information is provided at the following links. The bridge structure is broken into two structures: H-02-CA (west portion) and H-02DZ (east portion)
- a. <http://dtdapps.coloradodot.info/bridges/H-02-CA/photos.htm>
- b. <http://dtdapps.coloradodot.info/bridges/H-02-DZ/photos.htm>
11. Q. Is CDOT totally set on leaving the line run down the west side of the bridge?
- A. CDOT would be flexible to other alternatives. The west side was selected due to the inside bay of the east side was already occupied. Utilization of the first bay allows for top down construction.
12. Q. Can the line run on the outside of the west girder?
- A. CDOT current practice is not to allow utilities on the outside girders of bridges and in this case a gas line is already present.
13. Q. Will the City also be seeking professional Construction Management and Inspection services in support of this project?
- A. Construction management will be provided by the City of Grand Junction. The consultant would most likely be retained for inspection services as they pertain to the bridge structure but element of scope is not to be included in fee proposal and will be negotiated separately.
14. Q. What is the intended delivery method the City will be using to deliver this project?
- A. Project delivery is anticipated to be design, bid, build.
15. Q. Would the City prefer SCADA design for control of the Gunnison River Pump Station, and inflow from the Kannah Creek or Purdy Mesa Flow line, to the raw water reservoir? Just Gunnison River Pump Station?
- A. SCADA design is limited to Gunnison River Pump Station and the raw water reservoir. Inflows from the Kannah Creek and Purdy Mesa Flow lines are already controlled at the water treatment plant.
16. Q. At what phase of design would the City prefer to hold design review meetings?
- A. Meetings are proposed at Project Kickoff, 30%, and 90% and during the pre-bid meeting.

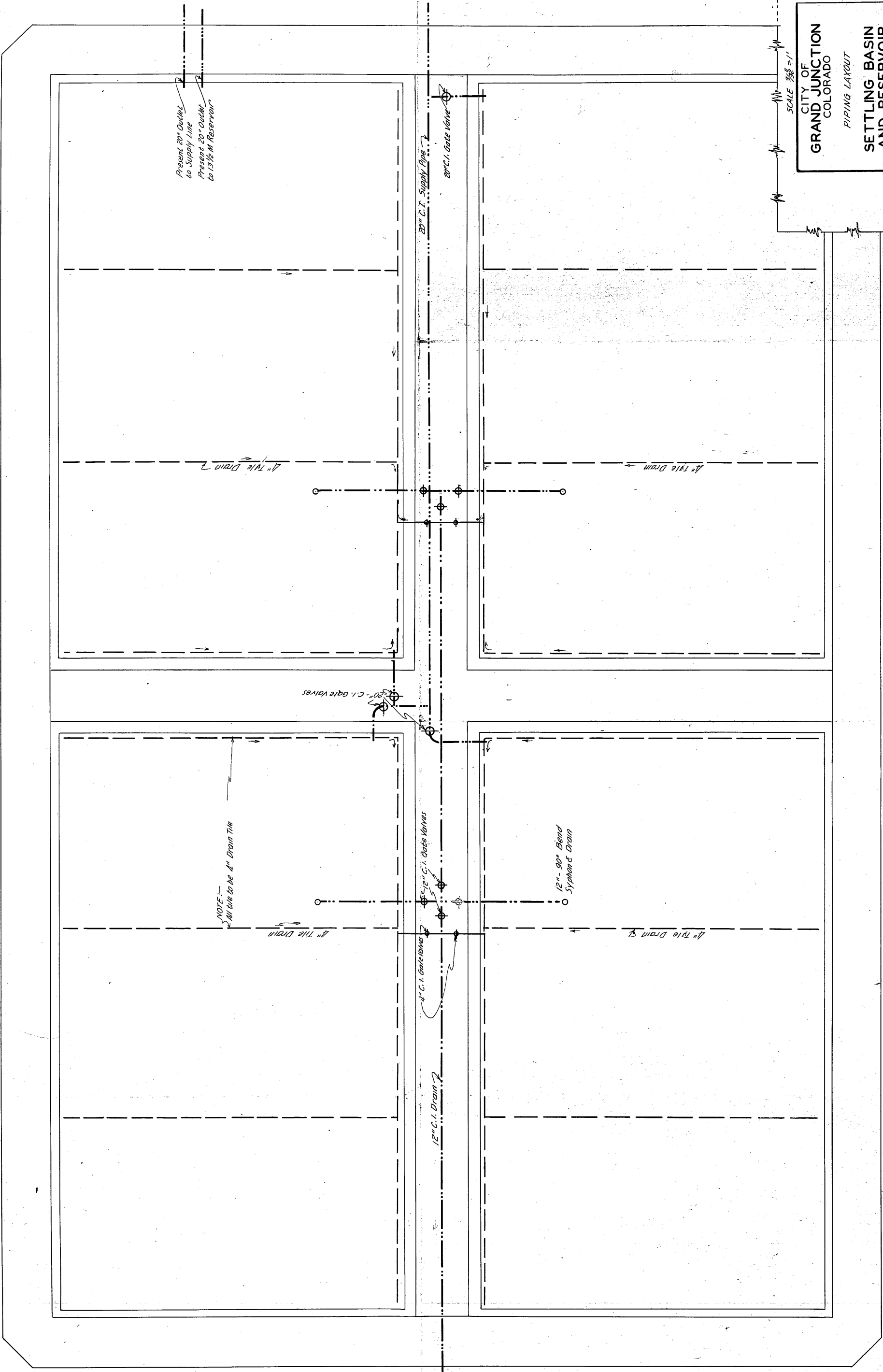
The original solicitation for the project noted above is amended as noted.

All other conditions of subject remain the same.

Respectfully,



Duane Hoff Jr., Senior Buyer
City of Grand Junction, Colorado



Present 20" Outlet
to Supply Line
Present 20" Outlet
to 13 1/2 M Reservoir

NOTE: All tile to be 4" Drain Tile

CITY OF
GRAND JUNCTION
COLORADO

PIPING LAYOUT

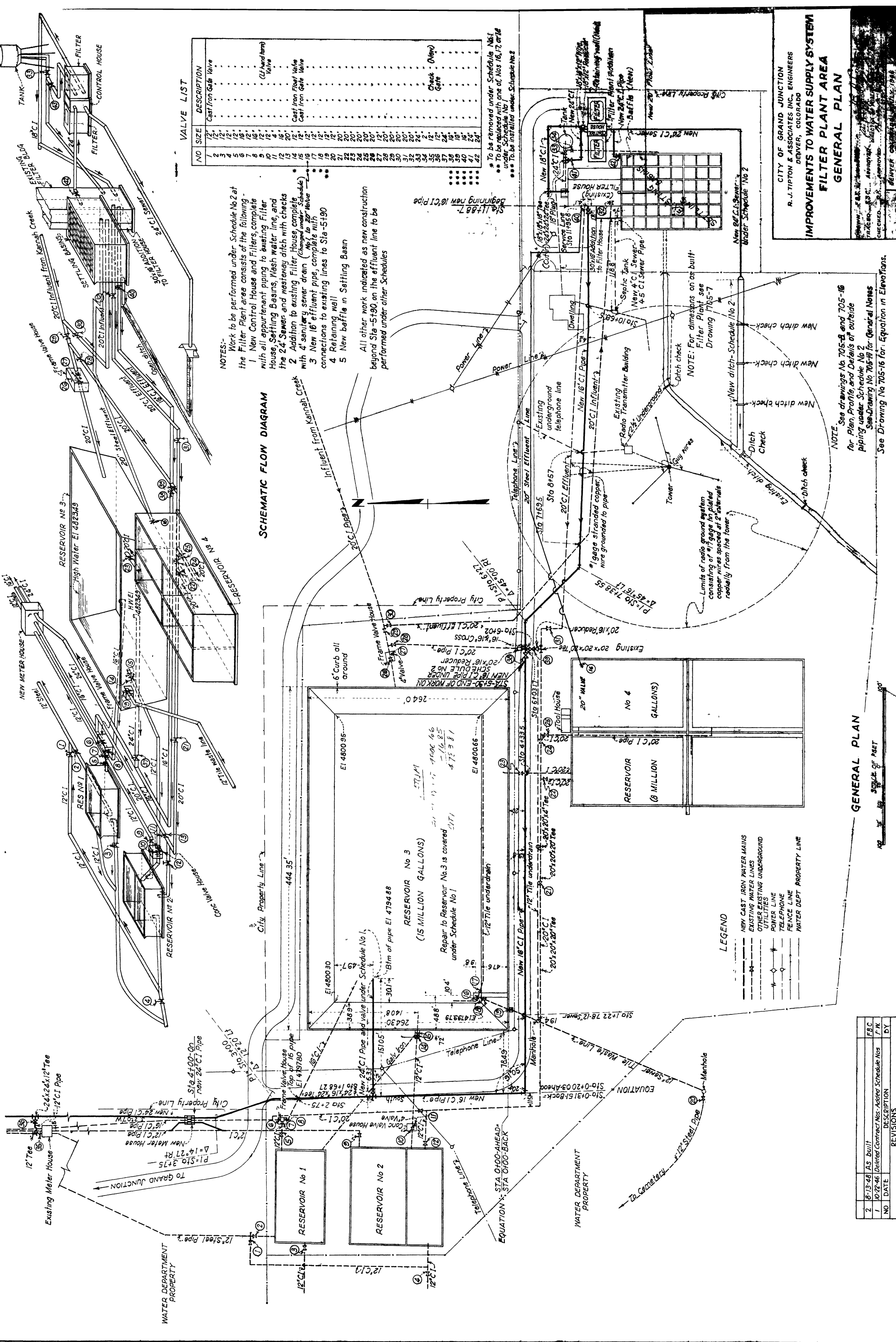
SETTLING BASIN
AND RESERVOIR

SCALE 3/8" = 1'

DRAWN BY: J.F.S.
O.K'd BY: J.F.S.
DATE: 8/29/1933

APPROVED: STATE ENGR. (RKA)
DATE: 8/29/1933





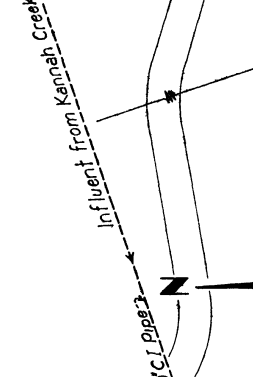
VALVE LIST

NO	SIZE	DESCRIPTION
1	12"	Cast Iron Gate Valve
2	12"	Cast Iron Gate Valve
3	12"	Cast Iron Gate Valve
4	12"	Cast Iron Gate Valve
5	12"	Cast Iron Gate Valve
6	12"	Cast Iron Gate Valve
7	12"	Cast Iron Gate Valve
8	12"	Cast Iron Gate Valve
9	12"	Cast Iron Gate Valve
10	12"	Cast Iron Gate Valve
11	12"	Cast Iron Gate Valve
12	12"	Cast Iron Gate Valve
13	12"	Cast Iron Gate Valve
14	12"	Cast Iron Gate Valve
15	12"	Cast Iron Gate Valve
16	12"	Cast Iron Gate Valve
17	12"	Cast Iron Gate Valve
18	12"	Cast Iron Gate Valve
19	12"	Cast Iron Gate Valve
20	12"	Cast Iron Gate Valve
21	20"	Cast Iron Gate Valve
22	20"	Cast Iron Gate Valve
23	20"	Cast Iron Gate Valve
24	20"	Cast Iron Gate Valve
25	20"	Cast Iron Gate Valve
26	20"	Cast Iron Gate Valve
27	20"	Cast Iron Gate Valve
28	20"	Cast Iron Gate Valve
29	20"	Cast Iron Gate Valve
30	20"	Cast Iron Gate Valve
31	20"	Cast Iron Gate Valve
32	20"	Cast Iron Gate Valve
33	20"	Cast Iron Gate Valve
34	20"	Cast Iron Gate Valve
35	20"	Cast Iron Gate Valve
36	20"	Cast Iron Gate Valve
37	20"	Cast Iron Gate Valve
38	18"	Cast Iron Gate Valve
39	18"	Cast Iron Gate Valve
40	18"	Cast Iron Gate Valve
41	18"	Cast Iron Gate Valve
42	24"	Cast Iron Gate Valve
43	24"	Cast Iron Gate Valve
44	24"	Cast Iron Gate Valve
45	24"	Cast Iron Gate Valve
46	24"	Cast Iron Gate Valve
47	24"	Cast Iron Gate Valve
48	24"	Cast Iron Gate Valve
49	24"	Cast Iron Gate Valve
50	24"	Cast Iron Gate Valve
51	24"	Cast Iron Gate Valve
52	24"	Cast Iron Gate Valve
53	24"	Cast Iron Gate Valve
54	24"	Cast Iron Gate Valve
55	24"	Cast Iron Gate Valve
56	24"	Cast Iron Gate Valve
57	24"	Cast Iron Gate Valve
58	24"	Cast Iron Gate Valve
59	24"	Cast Iron Gate Valve
60	24"	Cast Iron Gate Valve
61	24"	Cast Iron Gate Valve
62	24"	Cast Iron Gate Valve
63	24"	Cast Iron Gate Valve
64	24"	Cast Iron Gate Valve
65	24"	Cast Iron Gate Valve
66	24"	Cast Iron Gate Valve
67	24"	Cast Iron Gate Valve
68	24"	Cast Iron Gate Valve
69	24"	Cast Iron Gate Valve
70	24"	Cast Iron Gate Valve
71	24"	Cast Iron Gate Valve
72	24"	Cast Iron Gate Valve
73	24"	Cast Iron Gate Valve
74	24"	Cast Iron Gate Valve
75	24"	Cast Iron Gate Valve
76	24"	Cast Iron Gate Valve
77	24"	Cast Iron Gate Valve
78	24"	Cast Iron Gate Valve
79	24"	Cast Iron Gate Valve
80	24"	Cast Iron Gate Valve
81	24"	Cast Iron Gate Valve
82	24"	Cast Iron Gate Valve
83	24"	Cast Iron Gate Valve
84	24"	Cast Iron Gate Valve
85	24"	Cast Iron Gate Valve
86	24"	Cast Iron Gate Valve
87	24"	Cast Iron Gate Valve
88	24"	Cast Iron Gate Valve
89	24"	Cast Iron Gate Valve
90	24"	Cast Iron Gate Valve
91	24"	Cast Iron Gate Valve
92	24"	Cast Iron Gate Valve
93	24"	Cast Iron Gate Valve
94	24"	Cast Iron Gate Valve
95	24"	Cast Iron Gate Valve
96	24"	Cast Iron Gate Valve
97	24"	Cast Iron Gate Valve
98	24"	Cast Iron Gate Valve
99	24"	Cast Iron Gate Valve
100	24"	Cast Iron Gate Valve
101	24"	Cast Iron Gate Valve
102	24"	Cast Iron Gate Valve
103	24"	Cast Iron Gate Valve
104	24"	Cast Iron Gate Valve
105	24"	Cast Iron Gate Valve
106	24"	Cast Iron Gate Valve
107	24"	Cast Iron Gate Valve
108	24"	Cast Iron Gate Valve
109	24"	Cast Iron Gate Valve
110	24"	Cast Iron Gate Valve
111	24"	Cast Iron Gate Valve
112	24"	Cast Iron Gate Valve
113	24"	Cast Iron Gate Valve
114	24"	Cast Iron Gate Valve
115	24"	Cast Iron Gate Valve
116	24"	Cast Iron Gate Valve
117	24"	Cast Iron Gate Valve
118	24"	Cast Iron Gate Valve
119	24"	Cast Iron Gate Valve
120	24"	Cast Iron Gate Valve
121	24"	Cast Iron Gate Valve
122	24"	Cast Iron Gate Valve
123	24"	Cast Iron Gate Valve
124	24"	Cast Iron Gate Valve
125	24"	Cast Iron Gate Valve
126	24"	Cast Iron Gate Valve
127	24"	Cast Iron Gate Valve
128	24"	Cast Iron Gate Valve
129	24"	Cast Iron Gate Valve
130	24"	Cast Iron Gate Valve
131	24"	Cast Iron Gate Valve
132	24"	Cast Iron Gate Valve
133	24"	Cast Iron Gate Valve
134	24"	Cast Iron Gate Valve
135	24"	Cast Iron Gate Valve
136	24"	Cast Iron Gate Valve
137	24"	Cast Iron Gate Valve
138	24"	Cast Iron Gate Valve
139	24"	Cast Iron Gate Valve
140	24"	Cast Iron Gate Valve
141	24"	Cast Iron Gate Valve
142	24"	Cast Iron Gate Valve
143	24"	Cast Iron Gate Valve
144	24"	Cast Iron Gate Valve
145	24"	Cast Iron Gate Valve
146	24"	Cast Iron Gate Valve
147	24"	Cast Iron Gate Valve
148	24"	Cast Iron Gate Valve
149	24"	Cast Iron Gate Valve
150	24"	Cast Iron Gate Valve
151	24"	Cast Iron Gate Valve
152	24"	Cast Iron Gate Valve
153	24"	Cast Iron Gate Valve
154	24"	Cast Iron Gate Valve
155	24"	Cast Iron Gate Valve
156	24"	Cast Iron Gate Valve
157	24"	Cast Iron Gate Valve
158	24"	Cast Iron Gate Valve
159	24"	Cast Iron Gate Valve
160	24"	Cast Iron Gate Valve
161	24"	Cast Iron Gate Valve
162	24"	Cast Iron Gate Valve
163	24"	Cast Iron Gate Valve
164	24"	Cast Iron Gate Valve
165	24"	Cast Iron Gate Valve
166	24"	Cast Iron Gate Valve
167	24"	Cast Iron Gate Valve
168	24"	Cast Iron Gate Valve
169	24"	Cast Iron Gate Valve
170	24"	Cast Iron Gate Valve
171	24"	Cast Iron Gate Valve
172	24"	Cast Iron Gate Valve
173	24"	Cast Iron Gate Valve
174	24"	Cast Iron Gate Valve
175	24"	Cast Iron Gate Valve
176	24"	Cast Iron Gate Valve
177	24"	Cast Iron Gate Valve
178	24"	Cast Iron Gate Valve
179	24"	Cast Iron Gate Valve
180	24"	Cast Iron Gate Valve
181	24"	Cast Iron Gate Valve
182	24"	Cast Iron Gate Valve
183	24"	Cast Iron Gate Valve
184	24"	Cast Iron Gate Valve
185	24"	Cast Iron Gate Valve
186	24"	Cast Iron Gate Valve
187	24"	Cast Iron Gate Valve
188	24"	Cast Iron Gate Valve
189	24"	Cast Iron Gate Valve
190	24"	Cast Iron Gate Valve
191	24"	Cast Iron Gate Valve
192	24"	Cast Iron Gate Valve
193	24"	Cast Iron Gate Valve
194	24"	Cast Iron Gate Valve
195	24"	Cast Iron Gate Valve
196	24"	Cast Iron Gate Valve
197	24"	Cast Iron Gate Valve
198	24"	Cast Iron Gate Valve
199	24"	Cast Iron Gate Valve
200	24"	Cast Iron Gate Valve

NOTES:
 Work to be performed under Schedule No 2 at the Filter Plant area consists of the following:
 1 New Control House and Filters, complete with all appurtenant piping to existing Filter House, Settling Basins, Mash water line, and the 24" Sewer and wastewater ditch with checks
 2 Addition to existing Filter House, complete with 4" sanitary sewer drain (changed under Schedule No 1 to 24" Valve)
 3 New 16" effluent pipe, complete with connections to existing lines to Sta-5190
 4 Retaining wall
 5 New baffle in Settling Basin

All other work indicated as new construction beyond Sta-5190 on the effluent line to be performed under other Schedules

SCHEMATIC FLOW DIAGRAM



CITY OF GRAND JUNCTION
 R. J. TIPTON & ASSOCIATES INC., ENGINEERS
 DENVER, COLORADO

IMPROVEMENTS TO WATER SUPPLY SYSTEM
FILTER PLANT AREA
GENERAL PLAN

Checked: [Signature]
 Date: [Date]

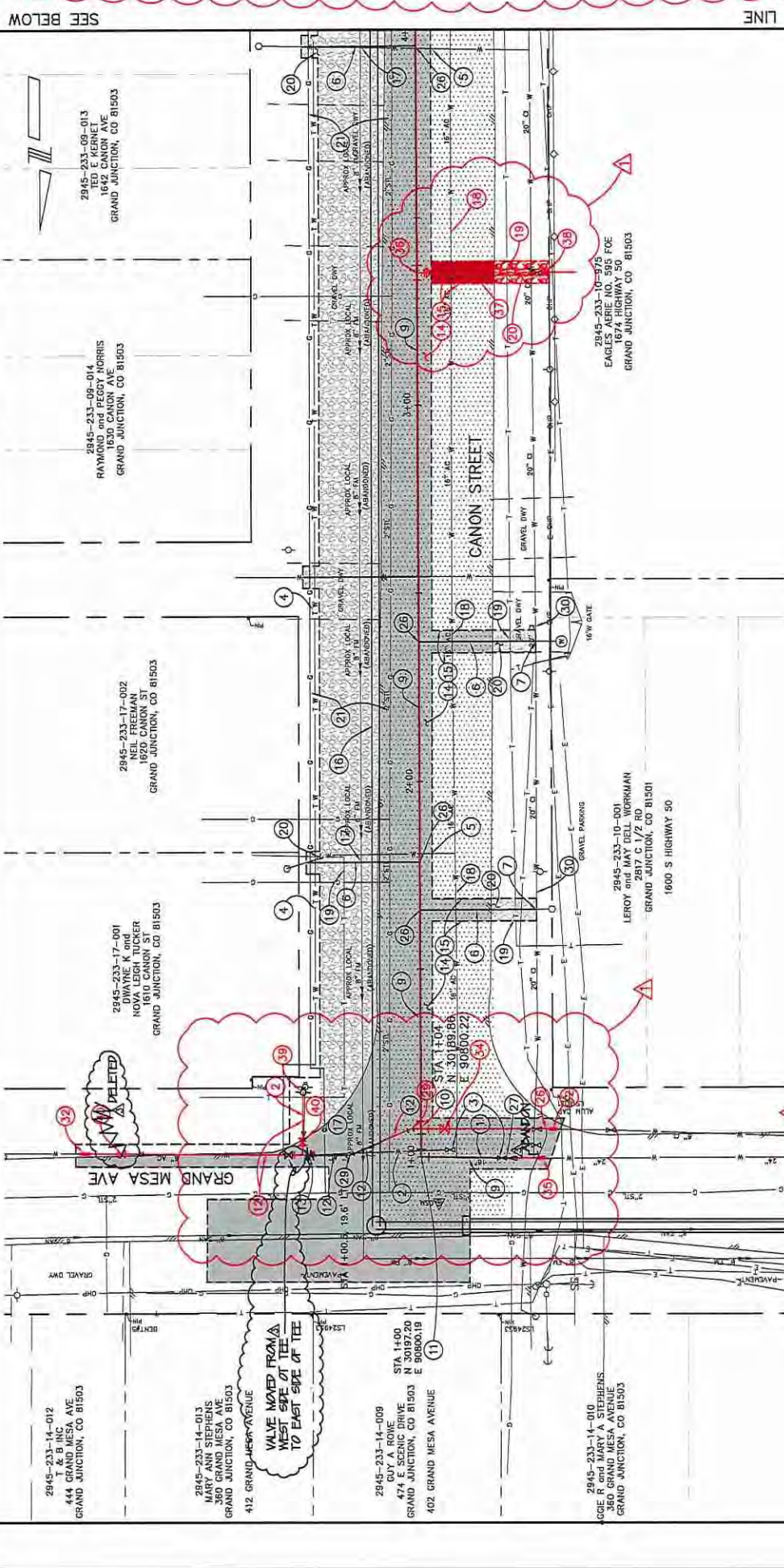
NOTE: See drawings No. 705-18 and 705-16 for Plan, Profile, and Details of outside piping under Schedule No 2
 See Drawing No. 705-19 for General Notes
 See Drawing No. 705-16 for Equation in Elevations.

- LEGEND**
- NEW CAST IRON WATER MAINS
 - EXISTING WATER LINES
 - OTHER EXISTING UNDERGROUND UTILITIES
 - POWER LINE
 - TELEPHONE
 - FENCE LINE
 - WATER DEPT. PROPERTY LINE

GENERAL PLAN
 SCALE OF PLAN

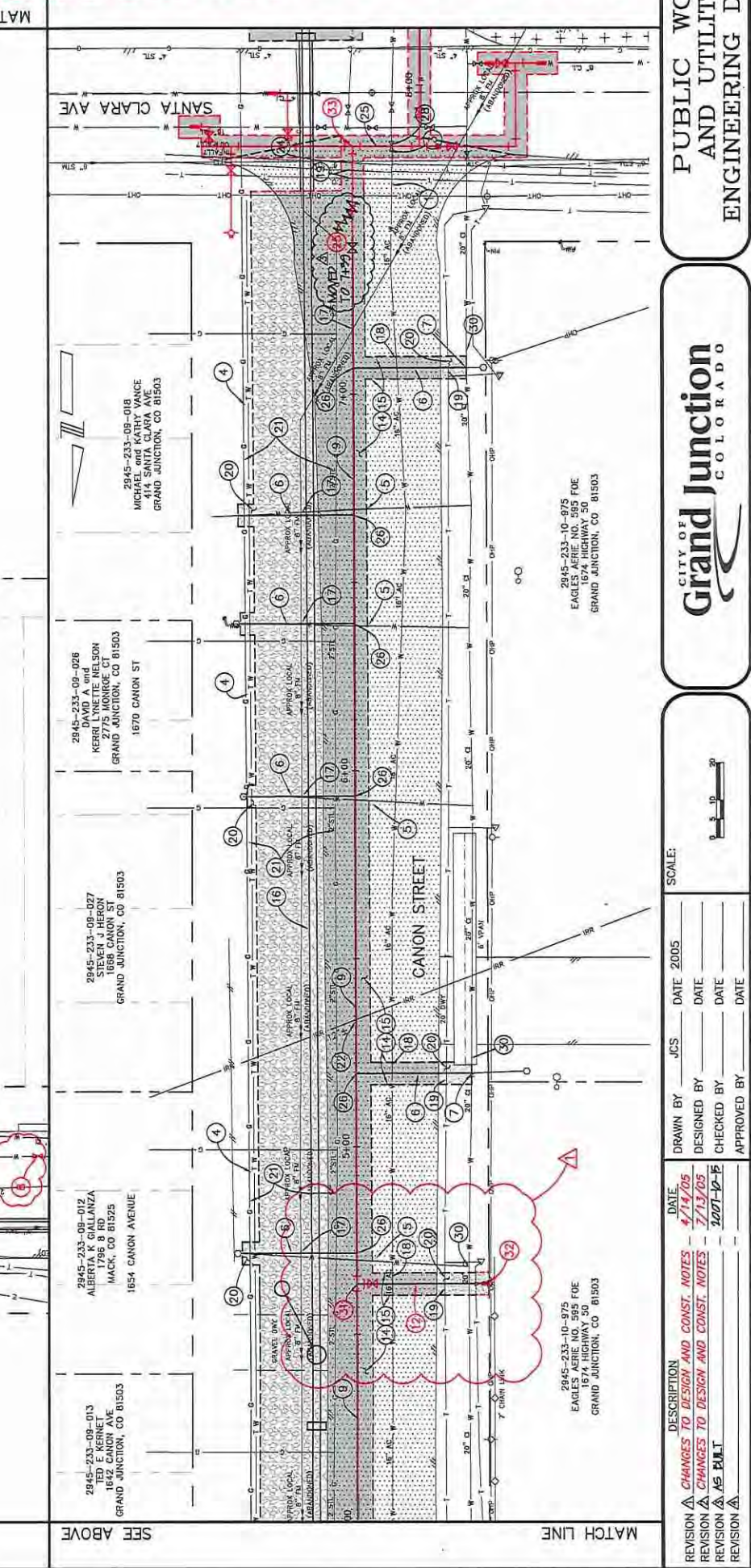
NO	DATE	DESCRIPTION	BY
2	8-13-48	As built	FBC
1	10-22-46	Ordered Contract Nos. Added Schedule Nos	F/M

- 1 202 - REMOVE EXISTING 16" AC WATERLINE.
- 2 202 - REMOVE EXISTING 6" AC WATERLINE.
- 3 202 - REMOVE EXISTING WATER VALVE AND RETURN TO CITY SHOPS.
- 4 CITY CREWS WILL BE PROVIDING WATER SERVICE THROUGH A TEMPORARY WATER LINE FOR THE RESIDENCES ON THE EAST SIDE OF CANON.
- 5 202 - CAP EXISTING WATER SERVICE. WATER SERVICE WILL BE CAPPED OFF AT THE WEST EDGE OF TRENCH. REMOVE EXISTING WATER SERVICE AS NEEDED TO FACILITATE WATER CONSTRUCTION. THE CONTRACT UNIT SHALL INCLUDE THE COST OF REMOVING EXISTING WATER SERVICE.
- 6 104 - EXTEND WATER SERVICE FROM METER PIT FOR SERVICES ON THE EAST SIDE OF CANON AND FROM THE EXISTING WATER LINE FOR SERVICES ON THE WEST SIDE OF CANON AS NEEDED TO CONNECT TO THE CORP STOP ON THE NEW WATER LINE. THERE WILL BE NO SEPARATE PAY FOR EXCAVATIONS TO COMPLETE WORK AFTER WATER MAIN TESTING.
- 7 TURN OF CORP STOP AT EXISTING WATER LINE. THE CONTRACT UNIT PRICE FOR WATER LINE SHALL INCLUDE THE COST OF TURNING OFF CORP STOPS AS NEEDED.
- 8 FURNISH AND INSTALL 24" BUTTERFLY VALVE. CONNECT VALVE TO EXISTING 24" DIP WATER MAIN (MJ BY MJ). THE CONTRACT UNIT PRICE FOR THE 24" BUTTERFLY VALVE SHALL INCLUDE THE COST OF ALL CONNECTIONS.
- 9 104 - FURNISH AND INSTALL 24" C-905 CLASS 185 DR225 PVC WATERLINE TRENCH BACKFILL SHALL MEET THE REQUIREMENTS OF CITY SPECIFICATION 103.15, 103.16, AND TYPICAL TRENCH DETAIL GU-03.
- 10 104 - FURNISH AND INSTALL A 24" X 24" X 6" DIP CROSS. CONNECT (MJ BY MJ) TO 24" PVC. (MJ BY MJ) TO 6" PVC. THE CONTRACT UNIT PRICE FOR 24" X 24" X 6" DIP CROSS SHALL INCLUDE THE COST OF ALL CONNECTIONS. RESTRAIN ALL JOINTS ON THE 24" PVC AND 6" PVC WATER LINES WITHIN 5' OF THE CROSS. (REFER TO PAGE W-07 OF THE STANDARD CONTRACT DOCUMENTS)
- 11 104 - FURNISH AND INSTALL A 24" - 90" DIP BEND. CONNECT (MJ BY MJ) TO 24" PVC. PLACE CONCRETE THURST BLOCK AT 90° BEND TO RESTRAIN 24" PVC WATER MAIN. THE CONTRACT UNIT PRICE FOR 24" - 90" DIP BEND SHALL INCLUDE THE COST OF ALL CONNECTIONS. (REFER TO PAGE W-07 OF THE STANDARD CONTRACT DOCUMENTS)
- 12 104 - FURNISH AND INSTALL 6" C-900, CLASS 150, DR18, PVC WATERLINE. ALL JOINTS SHALL HAVE JOINT RESTRAINT.
- 13 FURNISH AND INSTALL 6" GATE VALVE AND 6" X 6" DIP. ALL CONNECTIONS SHALL BE RESTRAINED. THE CONTRACT UNIT PRICE FOR THE 6" GATE VALVE AND 6" X 6" DIP SHALL INCLUDE THE COST OF ALL CONNECTIONS.
- 14 103.3 - ASPHALT REMOVAL, CUT AND REMOVE PAVEMENT AS SHOWN.
- 15 401 - HOT BITUMINOUS PAVEMENT (3" THICK) (GRADING SX) 304 - AGGREGATE BASE COURSE (CLASS 6) (6" THICK) (SEE CITY OF GRAND JUNCTION STANDARD DETAIL GU-03)
- 16 SEE SHEETS 7, 8, AND 9 FOR SEWER LINE CONSTRUCTION.
- 17 202 - REMOVE PIPE - ABANDONED 8" FORCE MAIN TO BE REMOVED AS NEEDED TO FACILITATE WATER INSTALLATION.
- 18 AFTER CITY CREWS HAVE ESTABLISHED TEMPORARY WATER SERVICES THE EXISTING 16" AC WATER LINE WILL BE TAKEN OUT OF SERVICE.
- 19 PROTECT UNDERGROUND TELEPHONE LINE. TELEPHONE LINE SHALL REMAIN IN SERVICE DURING CONSTRUCTION.
- 20 304 - AGGREGATE BASE COURSE (CLASS 6) (4" THICK)
- 21 EXISTING GAS LINE TO BE RELOCATED BY XCEL ENERGY TO THIS PROPOSED LOCATION. PROTECT NEW GAS LINE. NEW GAS LINE SHALL REMAIN IN SERVICE DURING CONSTRUCTION. ABANDON GAS LINE MAY BE REMOVED AS NEEDED TO FACILITATE WATER CONSTRUCTION.
- 22 PROTECT IRRIGATION PIPE. IRRIGATION PIPE SHALL REMAIN IN SERVICE DURING CONSTRUCTION.
- 23 NOT USED
- 24 202 - REMOVE 6" STORM DRAIN PIPE AS NEEDED FOR EXCAVATION. 102.106 - 6" STORM DRAIN (C-900 PVC). THE COST OF CONNECTIONS TO EXISTING PIPE SHALL BE CONSIDERED INCIDENTAL AND WILL NOT BE MEASURED AND PAID FOR SEPARATELY.
- 25 FURNISH AND INSTALL 24" BUTTERFLY VALVE. CONNECT VALVE TO 24" PVC WATER MAIN (MJ BY MJ). THE CONTRACT UNIT PRICE FOR THE 24" BUTTERFLY VALVE SHALL INCLUDE THE COST OF ALL CONNECTIONS.
- 26 FURNISH AND INSTALL A TAPPING SADDLE AND CORP STOP.



MATCH LINE

- 27 202 - REMOVE EXISTING 24" X 16" REDUCER. THE CONTRACT UNIT PRICE FOR REMOVING 16" AC WATERLINE SHALL INCLUDE THE COST OF REMOVING THIS REDUCER.
- 28 104 - FURNISH AND INSTALL A 24" X 24" X 16" DIP. CONNECT 16" LEG OF TEE (SOUTH) TO SOLID SLEEVE AND SOLID SLEEVE TO EXISTING 16" DI WATER LINE. CONNECT 24" LEG (EAST) TO 24" PVC WATER MAIN (MJ BY MJ). CONNECT 24" LEG OF TEE (WEST) TO RESTRAINED CAP. RESTRAIN ALL JOINTS ON THE 24" PVC WATER LINE WITHIN 135' OF THE TEE. PLACE CONCRETE THURST BLOCK NORTH OF TEE TO RESTRAIN EXISTING 16" AC WATER LINE. THE CONTRACT UNIT SHALL INCLUDE THE COST OF SOLID SLEEVE, RESTRAINED CAP, AND CONNECTIONS TO PIPE.
- 29 104 - FURNISH AND INSTALL A 6" - 22 1/2" DIP BEND. CONNECT (MJ BY MJ) TO 24" PVC AND 6" PVC. THE CONTRACT UNIT PRICE FOR BENDS SHALL INCLUDE THE COST OF ALL CONNECTIONS (REFER TO PAGES W-07 OF THE STANDARD CONTRACT DOCUMENTS)
- 30 PROTECT EXISTING 20" CI WATER MAIN IN PLACE. WATER MAIN SHALL REMAIN IN SERVICE DURING CONSTRUCTION.
- 31 104 - FURNISH AND INSTALL A 24" X 24" X 6" DIP TEE. CONNECT (MJ BY MJ) TO 24" PVC AND 6" PVC. FURNISH AND INSTALL 6" GATE VALVE. CONNECT (MJ BY MJ) TO 6" PVC. THE CONTRACT UNIT PRICE FOR TEE AND VALVE SHALL INCLUDE THE COST FOR ALL CONNECTIONS. RESTRAIN ALL JOINTS ON THE 24" AND 6" PVC WATER LINES WITHIN 18" OF THE TEE. (REFER TO PAGE W-07 OF THE STANDARD CONTRACT DOCUMENTS)
- 32 104 - FURNISH AND INSTALL SOLID SLEEVE OR DRESSER COUPLING (HIGH MAX). CONNECT EXISTING 6" AC WATER LINE TO NEW 6" PVC WATER LINE USING DRESSER. CONNECT EXISTING 6" CI WATER LINE TO NEW 6" PVC WATER LINE USING SOLID SLEEVE. THE CONTRACT UNIT PRICE FOR 6" WATERLINE SHALL INCLUDE THE COST OF SOLID SLEEVE OR DRESSER AND CONNECTIONS TO EXISTING PIPE.
- 33 104 - FURNISH AND INSTALL A 24" X 24" X 24" DIP. CONNECT THE WEST AND NORTH LEGS OF THE TEE TO 24" PVC WATER MAIN (MJ BY MJ). CONNECT SOUTH LEG OF TEE TO RESTRAINED CAP. THE CONTRACT UNIT SHALL INCLUDE THE COST OF RESTRAINED CAP AND CONNECTIONS TO PIPE. **SEE SHEET 11**
- 34 104 - FURNISH AND INSTALL 6" GATE VALVE. CONNECT (MJ BY MJ) TO 6" PVC WATER LINE. THE CONTRACT UNIT PRICE FOR 6" GATE VALVE SHALL INCLUDE THE COST FOR ALL CONNECTIONS.
- 35 104 - FURNISH AND INSTALL SOLID SLEEVE. CONNECT EXISTING 24" DIP WATER LINE TO NEW 24" PVC WATER LINE ON THE WEST SIDE OF THE EXISTING 24" X 24" X 20" TEE. THE CONTRACT UNIT PRICE FOR 24" X 24" X 20" TEE SHALL INCLUDE THE COST OF SOLID SLEEVE AND CONNECTIONS TO EXISTING PIPE.
- 36 104 - FURNISH AND INSTALL A 24" X 24" X 4" DIP TEE. CONNECT (MJ BY MJ) TO 24" PVC AND 4" PVC. FURNISH AND INSTALL 4" GATE VALVE. CONNECT (MJ BY MJ) TO 4" PVC. THE CONTRACT UNIT PRICE FOR TEE AND VALVE SHALL INCLUDE THE COST FOR ALL CONNECTIONS. RESTRAIN ALL JOINTS ON THE 24" AND 4" PVC WATER LINES WITHIN 18" OF THE TEE. (REFER TO PAGE W-07 OF THE STANDARD CONTRACT DOCUMENTS)
- 37 104 - FURNISH AND INSTALL 4" C-900, CLASS 150, DR18, PVC WATERLINE. ALL JOINTS SHALL HAVE JOINT RESTRAINT.
- 38 104 - FURNISH AND INSTALL SOLID SLEEVE. CONNECT EXISTING 4" PVC FIRE LINE TO NEW 4" PVC WATER LINE. INCLUDE THE COST OF SOLID SLEEVE AND CONNECTIONS TO EXISTING PIPE.
- 39 202/04 - REMOVE EXISTING HYDRANT AND RETURN TO CITY SHOPS. FURNISH AND INSTALL 6" GATE VALVE.
- 40 104 - FURNISH AND INSTALL 6" GATE VALVE. CONNECT VALVE TO 6" PVC WATER MAIN (MJ BY MJ). THE CONTRACT UNIT PRICE FOR 6" GATE VALVE SHALL INCLUDE THE COST OF ALL CONNECTIONS.



MATCH LINE

**DUCK POND PARK LIFT STATION
ELIMINATION AND GRAVITY SEWER CONSTRUCTION
WATER LINE REPLACEMENT PLANS
CANON STREET**

**PUBLIC WORKS
AND UTILITIES
ENGINEERING DIVISION**

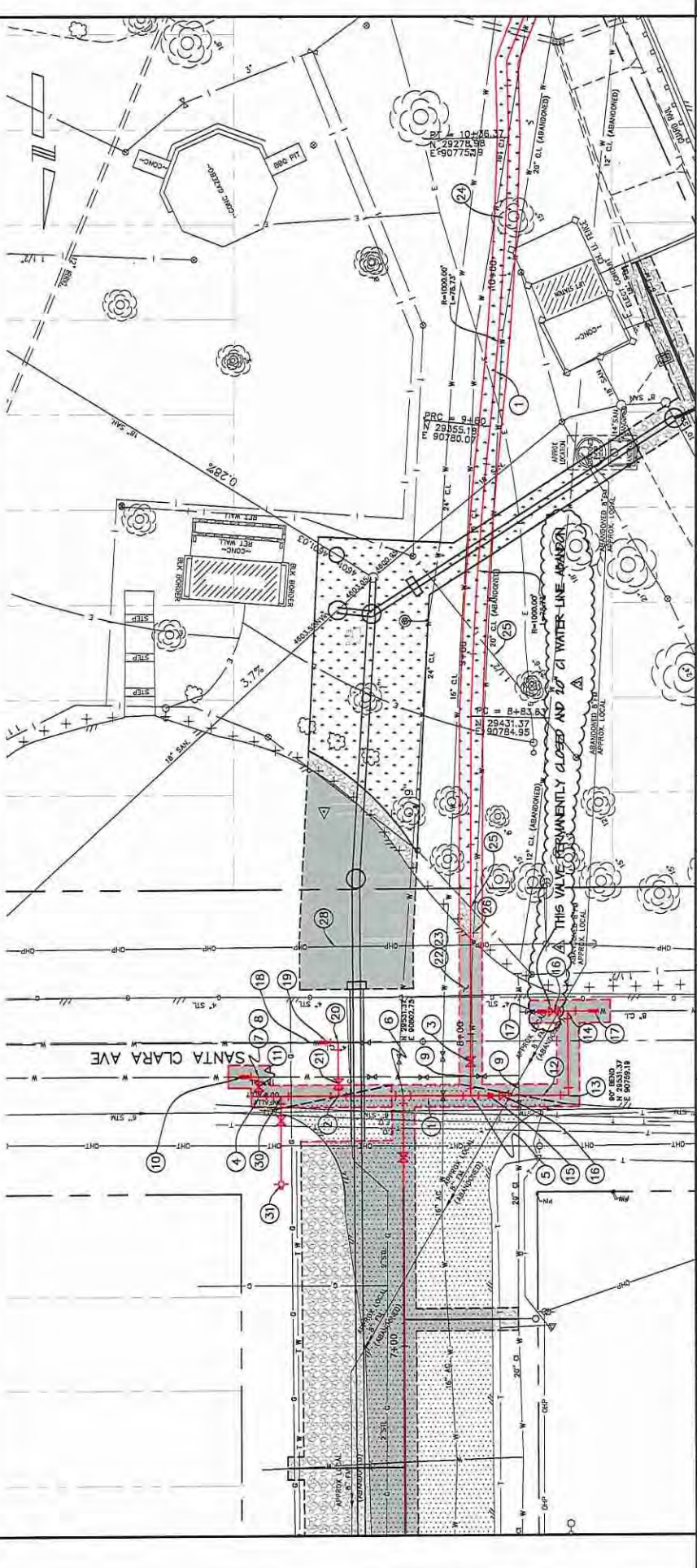
**CITY OF Grand Junction
COLORADO**

REVISION	DATE	DESIGNED BY	DATE
1	4/14/05	JCS	2005
2	7/13/05	DESIGNED BY	DATE
3	2007-02-15	CHECKED BY	DATE
4		APPROVED BY	DATE

DESCRIPTION: **CHANGES TO DESIGN AND CONST. NOTES**
 4/14/05
CHANGES TO DESIGN AND CONST. NOTES
 7/13/05
CHANGES TO DESIGN AND CONST. NOTES
 2007-02-15

SCALE: _____

- 1 104 - FURNISH AND INSTALL 24" C-905, CLASS 165, DR25, PVC WATERLINE. TRENCH BACKFILL SHALL MEET THE REQUIREMENTS OF CITY SPECIFICATION 103.15, 103.16, AND TYPICAL TRENCH DETAIL GU-03.
- 2 104 - FURNISH AND INSTALL A 24"x24"x14" DIP TEE, CONNECT (MJ BY MJ) TO 14" AND 24" PVC. PLACE CONCRETE THRUST BLOCK AT TEE TO RESTRAIN 24" PVC WATER MAIN. THE CONTRACT UNIT PRICE FOR 24"x24"x14" DIP TEE SHALL INCLUDE THE COST OF ALL CONNECTIONS. (REFER TO PAGE W-07 OF THE STANDARD CONTRACT DOCUMENTS)
- 3 FURNISH AND INSTALL 24" BUTTERFLY VALVE. CONNECT VALVE TO 24" PVC WATER MAIN (MJ BY MJ). THE CONTRACT UNIT PRICE FOR 24" BUTTERFLY VALVE SHALL INCLUDE THE COST OF ALL CONNECTIONS.
- 4 104 - FURNISH AND INSTALL A 24" X 24" X 16" DIP TEE. CONNECT 16" LEG OF TEE (SOUTH) TO 16" BUTTERFLY VALVE. CONNECT 24" LEG (EAST) TO MAIN (MJ BY MJ). RESTRAIN 24" LEG (EAST) TO RESTRAINED CAP. RESTRAIN ALL JOINTS ON THE 24" PVC WATER LINE WITHIN 40' OF THE TEE. PLACE CONCRETE THRUST BLOCK NORTH OF THE TEE TO RESTRAIN EXISTING 16" CI WATER LINE. THE CONTRACT UNIT PRICE FOR 24" X 24" X 16" DIP TEE SHALL INCLUDE THE COST OF, RESTRAINED CAP, AND CONNECTIONS TO PIPE.
- 5 104 - FURNISH AND INSTALL A 24"x24"x24" DIP TEE. CONNECT EAST AND SOUTH LEGS OF THE TEE TO 24" PVC WATER MAIN (MJ BY MJ). CONNECT WEST LEG TO 24"x8" DIP REDUCER. RESTRAIN ALL JOINTS ON THE 24" PVC WATER LINE FROM WATER STA. 6+42 TO STA. 9+10 (268 LF.) AND THE 24" WATER MAIN GOING EAST ON SANTA CLARA (40 LF.). PLACE CONCRETE THRUST BLOCK NORTH OF THE TEE. THE CONTRACT UNIT PRICE FOR THE 24"x24"x24" DIP TEE SHALL INCLUDE THE COST OF ALL CONNECTIONS.
- 6 104 - FURNISH AND INSTALL A 24" X 24" X 24" DIP TEE. CONNECT ALL LEGS OF THE TEE TO 24" PVC WATER MAIN (MJ BY MJ). PLACE CONCRETE THRUST BLOCK SOUTH OF TEE. THE CONTRACT UNIT PRICE FOR 24" X 24" X 24" DIP TEE SHALL INCLUDE THE COST OF CONNECTIONS TO PIPE.
- 7 104 - FURNISH AND INSTALL 16" C-905, CLASS 165, DR25, PVC WATERLINE. ALL JOINTS SHALL HAVE JOINT RESTRAINT.
- 8 104 - FURNISH AND INSTALL A 16" 90° DIP BEND, CONNECT (MJ BY MJ) TO 16" PVC. PLACE CONCRETE THRUST BLOCK AT 90° BEND TO RESTRAIN 16" PVC WATER MAIN. THE CONTRACT UNIT PRICE FOR 16" 90° DIP BEND SHALL INCLUDE THE COST OF ALL CONNECTIONS. (REFER TO PAGES W-07 OF THE STANDARD CONTRACT DOCUMENTS)
- 9 PROTECT EXISTING 20" CI WATER MAIN IN PLACE. WATER MAIN SHALL REMAIN IN SERVICE DURING CONSTRUCTION.
- 10 104 - FURNISH AND INSTALL SOLID SLEEVE. CONNECT EXISTING 16" CI WATER LINE TO NEW 16" PVC WATER LINE USING SOLID SLEEVE. THE CONTRACT UNIT PRICE FOR 16" WATERLINE SHALL INCLUDE THE COST OF SOLID SLEEVE AND CONNECTIONS TO EXISTING PIPE.
- 11 104 - FURNISH AND INSTALL 16" BUTTERFLY VALVE. CONNECT VALVE TO 16" PVC WATER MAIN (MJ BY MJ). THE CONTRACT UNIT PRICE FOR 16" BUTTERFLY VALVE SHALL INCLUDE THE COST OF ALL CONNECTIONS.
- 12 104 - FURNISH AND INSTALL 8" C-900, CLASS 150, DR18, PVC WATERLINE. ALL JOINTS SHALL HAVE JOINT RESTRAINT.
- 13 104 - FURNISH AND INSTALL A 8" - 90° DIP BEND, CONNECT (MJ BY MJ) TO 8" PVC. PLACE CONCRETE THRUST BLOCK AT 90° BEND TO RESTRAIN 8" PVC WATER MAIN. THE CONTRACT UNIT PRICE FOR 8" 90° DIP BEND SHALL INCLUDE THE COST OF ALL CONNECTIONS. (REFER TO PAGE W-07 OF THE STANDARD CONTRACT DOCUMENTS)
- 14 104 - FURNISH AND INSTALL A 8"x8"x8" DIP TEE. CONNECT ALL LEGS OF THE TEE TO 8" PVC WATER MAIN (MJ BY MJ). PLACE CONCRETE THRUST BLOCK SOUTH OF TEE. THE CONTRACT UNIT PRICE FOR 8"x8"x8" DIP TEE SHALL INCLUDE THE COST OF CONNECTIONS TO PIPE.
- 15 104 - FURNISH AND INSTALL A 24"x8" DIP REDUCER, CONNECT (MJ BY MJ) TO 24"x24"x24" DIP TEE AND 8" GATE VALVE. THE CONTRACT UNIT PRICE FOR 8"x8"x24" DIP TEE SHALL INCLUDE THE COST OF CONNECTIONS TO PIPE.
- 16 104 - FURNISH AND INSTALL 8" GATE VALVE. CONNECT VALVE TO 8" PVC WATER MAIN (MJ BY MJ). THE CONTRACT UNIT PRICE FOR 8" GATE VALVE SHALL INCLUDE THE COST OF ALL CONNECTIONS.
- 17 104 - FURNISH AND INSTALL SOLID SLEEVE. CONNECT EXISTING 8" CI WATER LINE TO NEW 8" PVC WATER LINE USING SOLID SLEEVE. THE CONTRACT UNIT PRICE FOR 8" WATERLINE SHALL INCLUDE THE COST OF SOLID SLEEVE AND CONNECTIONS TO EXISTING PIPE.
- 18 104 - FURNISH AND INSTALL 14" C-905, CLASS 165, DR25, PVC WATERLINE. ALL JOINTS SHALL HAVE JOINT RESTRAINT.
- 19 104 - FURNISH AND INSTALL SOLID SLEEVE. CONNECT EXISTING 14" PVC WATER LINE TO NEW 14" PVC WATER LINE. THE CONTRACT UNIT PRICE FOR 14" WATER LINE SHALL INCLUDE THE COST OF SOLID SLEEVE AND CONNECTIONS TO EXISTING PIPE.
- 20 104 - FURNISH AND INSTALL A 14" 90° DIP BEND, CONNECT (MJ BY MJ) TO 14" PVC. PLACE CONCRETE THRUST BLOCK AT 90° BEND TO RESTRAIN 14" PVC WATER MAIN. THE CONTRACT UNIT PRICE FOR 14" 90° DIP BEND SHALL INCLUDE THE COST OF ALL CONNECTIONS. (REFER TO PAGES W-07 OF THE STANDARD CONTRACT DOCUMENTS)
- 21 104 - FURNISH AND INSTALL 14" BUTTERFLY VALVE. CONNECT VALVE TO 14" PVC WATER MAIN (MJ BY MJ). THE CONTRACT UNIT PRICE FOR 14" BUTTERFLY VALVE SHALL INCLUDE THE COST OF ALL CONNECTIONS.
- 22 103.3 - ASPHALT REMOVAL CUT AND REMOVE PAVEMENT AS SHOWN.
- 23 401-HOT BITUMINOUS PAVEMENT (3" THICK) (GRADING SX) 304 - AGGREGATE BASE COURSE (CLASS 6) (6" THICK) (SEE CITY OF GRAND JUNCTION STANDARD DETAIL GU-03)
- 24 202 - REMOVE TREE
- 25 210 - RESET SPRINKLER SYSTEM.
- 26 210 - RESET POST
- 27 210 - RESET GUARDRAIL AS NEEDED FOR WATER LINE CONSTRUCTION AND PAVEMENT RESTORATION.
- 28 PROTECT OVERHEAD POWER LINE. OVERHEAD POWER LINE SHALL REMAIN IN SERVICE DURING CONSTRUCTION.
- 29 PROTECT UNDERGROUND ELECTRIC LINE. ELECTRIC LINE SHALL REMAIN IN SERVICE DURING CONSTRUCTION.
- 30 FURNISH AND INSTALL 6" GATE VALVE AND 24" X 24" X 6" DIP TEE. ALL CONNECTIONS SHALL BE RESTRAINED. THE CONTRACT UNIT PRICE FOR THE 6" GATE VALVE AND 24" X 24" X 6" DIP TEE SHALL INCLUDE THE COST OF ALL CONNECTIONS.
- 31 FURNISH AND INSTALL FIRE HYDRANT ASSEMBLY.



PROJECT CONTROL DATA	
POINT	NORTHING EASTING STATION OFFSET ELEVATION DESCRIPTION
702	30976.29 80338.28 2+82.28 38.43 4828.05 NO. 5 REBAR
700	30208.76 80401.59 4828.01 65.38 4828.01 65.38
402	30208.76 80795.54 13+24.64 6.15 4825.15 CITY SURVEY MONUMENT
407	12851.07 80797.80 20+58.50 17.40 4824.08 CITY SURVEY MONUMENT

Station	Description
4625	CONNECT NEW 24" WATER LINE TO EXISTING 24"x24"x24" TEE
4620	PROVIDE A MINIMUM OF 6" CLEARANCE UNDER NEW 16" WATER LINE
4615	
4610	
4605	
4600	
4595	

REVISION A NEW DRAWING FOR CONTINUATION OF 7/19/05

REVISION B NEW 24" WATER LINE IN CANON STREET 1/27/05

REVISION C ADDITIONAL EXISTING TOPO 1/27/05

REVISION D AS BUILT 1/27/05

DATE 7/19/05

DATE 1/27/05

DATE 1/27/05

DATE 1/27/05

DRAWN BY JCS

DESIGNED BY

CHECKED BY

APPROVED BY

DATE 2005

DATE

DATE

DATE

SCALE:

8+00 9+00 10+00

DESCRIPTION

7+00 8+00 9+00 10+00

REVISION A NEW DRAWING FOR CONTINUATION OF 7/19/05

REVISION B NEW 24" WATER LINE IN CANON STREET 1/27/05

REVISION C ADDITIONAL EXISTING TOPO 1/27/05

REVISION D AS BUILT 1/27/05

DATE 7/19/05

DATE 1/27/05

DATE 1/27/05

DATE 1/27/05

DRAWN BY JCS

DESIGNED BY

CHECKED BY

APPROVED BY

DATE 2005

DATE

DATE

DATE

SCALE:

8+00 9+00 10+00

DESCRIPTION

7+00 8+00 9+00 10+00

REVISION A NEW DRAWING FOR CONTINUATION OF 7/19/05

REVISION B NEW 24" WATER LINE IN CANON STREET 1/27/05

REVISION C ADDITIONAL EXISTING TOPO 1/27/05

REVISION D AS BUILT 1/27/05

DATE 7/19/05

DATE 1/27/05

DATE 1/27/05

DATE 1/27/05

DRAWN BY JCS

DESIGNED BY

CHECKED BY

APPROVED BY

DATE 2005

DATE

DATE

DATE

SCALE:

8+00 9+00 10+00

DESCRIPTION

7+00 8+00 9+00 10+00

REVISION A NEW DRAWING FOR CONTINUATION OF 7/19/05

REVISION B NEW 24" WATER LINE IN CANON STREET 1/27/05

REVISION C ADDITIONAL EXISTING TOPO 1/27/05

REVISION D AS BUILT 1/27/05

DATE 7/19/05

DATE 1/27/05

DATE 1/27/05

DATE 1/27/05

DRAWN BY JCS

DESIGNED BY

CHECKED BY

APPROVED BY

DATE 2005

DATE

DATE

DATE

SCALE:

8+00 9+00 10+00

DESCRIPTION

7+00 8+00 9+00 10+00

REVISION A NEW DRAWING FOR CONTINUATION OF 7/19/05

REVISION B NEW 24" WATER LINE IN CANON STREET 1/27/05

REVISION C ADDITIONAL EXISTING TOPO 1/27/05

REVISION D AS BUILT 1/27/05

DATE 7/19/05

DATE 1/27/05

DATE 1/27/05

DATE 1/27/05

DRAWN BY JCS

DESIGNED BY

CHECKED BY

APPROVED BY

DATE 2005

DATE

DATE

DATE

SCALE:

8+00 9+00 10+00

DESCRIPTION

7+00 8+00 9+00 10+00

REVISION A NEW DRAWING FOR CONTINUATION OF 7/19/05

REVISION B NEW 24" WATER LINE IN CANON STREET 1/27/05

REVISION C ADDITIONAL EXISTING TOPO 1/27/05

REVISION D AS BUILT 1/27/05

DATE 7/19/05

DATE 1/27/05

DATE 1/27/05

DATE 1/27/05

DRAWN BY JCS

DESIGNED BY

CHECKED BY

APPROVED BY

DATE 2005

DATE

DATE

DATE

SCALE:

8+00 9+00 10+00

DESCRIPTION

7+00 8+00 9+00 10+00

REVISION A NEW DRAWING FOR CONTINUATION OF 7/19/05

REVISION B NEW 24" WATER LINE IN CANON STREET 1/27/05

REVISION C ADDITIONAL EXISTING TOPO 1/27/05

REVISION D AS BUILT 1/27/05

DATE 7/19/05

DATE 1/27/05

DATE 1/27/05

DATE 1/27/05

DRAWN BY JCS

DESIGNED BY

CHECKED BY

APPROVED BY

DATE 2005

DATE

DATE

DATE

SCALE:

8+00 9+00 10+00

DESCRIPTION

7+00 8+00 9+00 10+00

REVISION A NEW DRAWING FOR CONTINUATION OF 7/19/05

REVISION B NEW 24" WATER LINE IN CANON STREET 1/27/05

REVISION C ADDITIONAL EXISTING TOPO 1/27/05

REVISION D AS BUILT 1/27/05

DATE 7/19/05

DATE 1/27/05

DATE 1/27/05

DATE 1/27/05

DRAWN BY JCS

DESIGNED BY

CHECKED BY

APPROVED BY

DATE 2005

DATE

DATE

DATE

SCALE:

8+00 9+00 10+00

DESCRIPTION

7+00 8+00 9+00 10+00

REVISION A NEW DRAWING FOR CONTINUATION OF 7/19/05

REVISION B NEW 24" WATER LINE IN CANON STREET 1/27/05

REVISION C ADDITIONAL EXISTING TOPO 1/27/05

REVISION D AS BUILT 1/27/05

DATE 7/19/05

DATE 1/27/05

DATE 1/27/05

DATE 1/27/05

DRAWN BY JCS

DESIGNED BY

CHECKED BY

APPROVED BY

DATE 2005

DATE

DATE

DATE

SCALE:

8+00 9+00 10+00

DESCRIPTION

7+00 8+00 9+00 10+00

REVISION A NEW DRAWING FOR CONTINUATION OF 7/19/05

REVISION B NEW 24" WATER LINE IN CANON STREET 1/27/05

REVISION C ADDITIONAL EXISTING TOPO 1/27/05

REVISION D AS BUILT 1/27/05

DATE 7/19/05

DATE 1/27/05

DATE 1/27/05

DATE 1/27/05

DRAWN BY JCS

DESIGNED BY

CHECKED BY

APPROVED BY

DATE 2005

DATE

DATE

DATE

SCALE:

8+00 9+00 10+00

DESCRIPTION

7+00 8+00 9+00 10+00

REVISION A NEW DRAWING FOR CONTINUATION OF 7/19/05

REVISION B NEW 24" WATER LINE IN CANON STREET 1/27/05

REVISION C ADDITIONAL EXISTING TOPO 1/27/05

REVISION D AS BUILT 1/27/05

DATE 7/19/05

DATE 1/27/05

DATE 1/27/05

DATE 1/27/05

DRAWN BY JCS

DESIGNED BY

CHECKED BY

APPROVED BY

DATE 2005

DATE

DATE

DATE

SCALE:

8+00 9+00 10+00

DESCRIPTION

7+00 8+00 9+00 10+00

REVISION A NEW DRAWING FOR CONTINUATION OF 7/19/05

REVISION B NEW 24" WATER LINE IN CANON STREET 1/27/05

REVISION C ADDITIONAL EXISTING TOPO 1/27/05

REVISION D AS BUILT 1/27/05

DATE 7/19/05

DATE 1/27/05

DATE 1/27/05

DATE 1/27/05

DRAWN BY JCS

DESIGNED BY

CHECKED BY

APPROVED BY

DATE 2005

DATE

DATE

DATE

SCALE:

8+00 9+00 10+00

DESCRIPTION

7+00 8+00 9+00 10+00

REVISION A NEW DRAWING FOR CONTINUATION OF 7/19/05

REVISION B NEW 24" WATER LINE IN CANON STREET 1/27/05

REVISION C ADDITIONAL EXISTING TOPO 1/27/05

REVISION D AS BUILT 1/27/05

DATE 7/19/05

DATE 1/27/05

DATE 1/27/05

DATE 1/27/05

DRAWN BY JCS

DESIGNED BY

CHECKED BY

APPROVED BY

DATE 2005

DATE

DATE

DATE

SCALE:

8+00 9+00 10+00

DESCRIPTION

7+00 8+00 9+00 10+00

REVISION A NEW DRAWING FOR CONTINUATION OF 7/19/05

REVISION B NEW 24" WATER LINE IN CANON STREET 1/27/05

REVISION C ADDITIONAL EXISTING TOPO 1/27/05

REVISION D AS BUILT 1/27/05

DATE 7/19/05

DATE 1/27/05

DATE 1/27/05

DATE 1/27/05

DRAWN BY JCS

DESIGNED BY

CHECKED BY

APPROVED BY

DATE 2005

DATE

DATE

DATE

SCALE:

8+00 9+00 10+00

DESCRIPTION

7+00 8+00 9+00 10+00

REVISION A NEW DRAWING FOR CONTINUATION OF 7/19/05

REVISION B NEW 24" WATER LINE IN CANON STREET 1/27/05

REVISION C ADDITIONAL EXISTING TOPO 1/27/05

REVISION D AS BUILT 1/27/05

DATE 7/19/05

DATE 1/27/05

DATE 1/27/05

DATE 1/27/05

DRAWN BY JCS

DESIGNED BY

CHECKED BY

APPROVED BY

DATE 2005

DATE

DATE

DATE

SCALE:

8+00 9+00 10+00

DESCRIPTION

7+00 8+00 9+00 10+00

REVISION A NEW DRAWING FOR CONTINUATION OF 7/19/05

REVISION B NEW 24" WATER LINE IN CANON STREET 1/27/05

REVISION C ADDITIONAL EXISTING TOPO 1/27/05

REVISION D AS BUILT 1/27/05

DATE 7/19/05

DATE 1/27/05

DATE 1/27/05

DATE 1/27/05

DRAWN BY JCS

DESIGNED BY

CHECKED BY

APPROVED BY

DATE 2005

DATE

DATE

DATE

SCALE:

8+00 9+00 10+00

DESCRIPTION

7+00 8+00 9+00 10+00

REVISION A NEW DRAWING FOR CONTINUATION OF 7/19/05

REVISION B NEW 24" WATER LINE IN CANON STREET 1/27/05

REVISION C ADDITIONAL EXISTING TOPO 1/27/05

REVISION D AS BUILT 1/27/05

DATE 7/19/05

DATE 1/27/05

DATE 1/27/05

DATE 1/27/05

DRAWN BY JCS

DESIGNED BY

CHECKED BY

APPROVED BY

DATE 2005

DATE

DATE

DATE

SCALE:

8+00 9+00 10+00

DESCRIPTION

7+00 8+00 9+00 10+00

REVISION A NEW DRAWING FOR CONTINUATION OF 7/19/05

REVISION B NEW 24" WATER LINE IN CANON STREET 1/27/05

REVISION C ADDITIONAL EXISTING TOPO 1/27/05

REVISION D AS BUILT 1/27/05

DATE 7/19/05

DATE 1/27/05

DATE 1/27/05

DATE 1/27/05

DRAWN BY JCS

DESIGNED BY

CHECKED BY

APPROVED BY

DATE 2005

DATE

DATE

DATE

SCALE:

8+00 9+00 10+00

DESCRIPTION

7+00 8+00 9+00 10+00

REVISION A NEW DRAWING FOR CONTINUATION OF 7/19/05

REVISION B NEW 24" WATER LINE IN CANON STREET 1/27/05

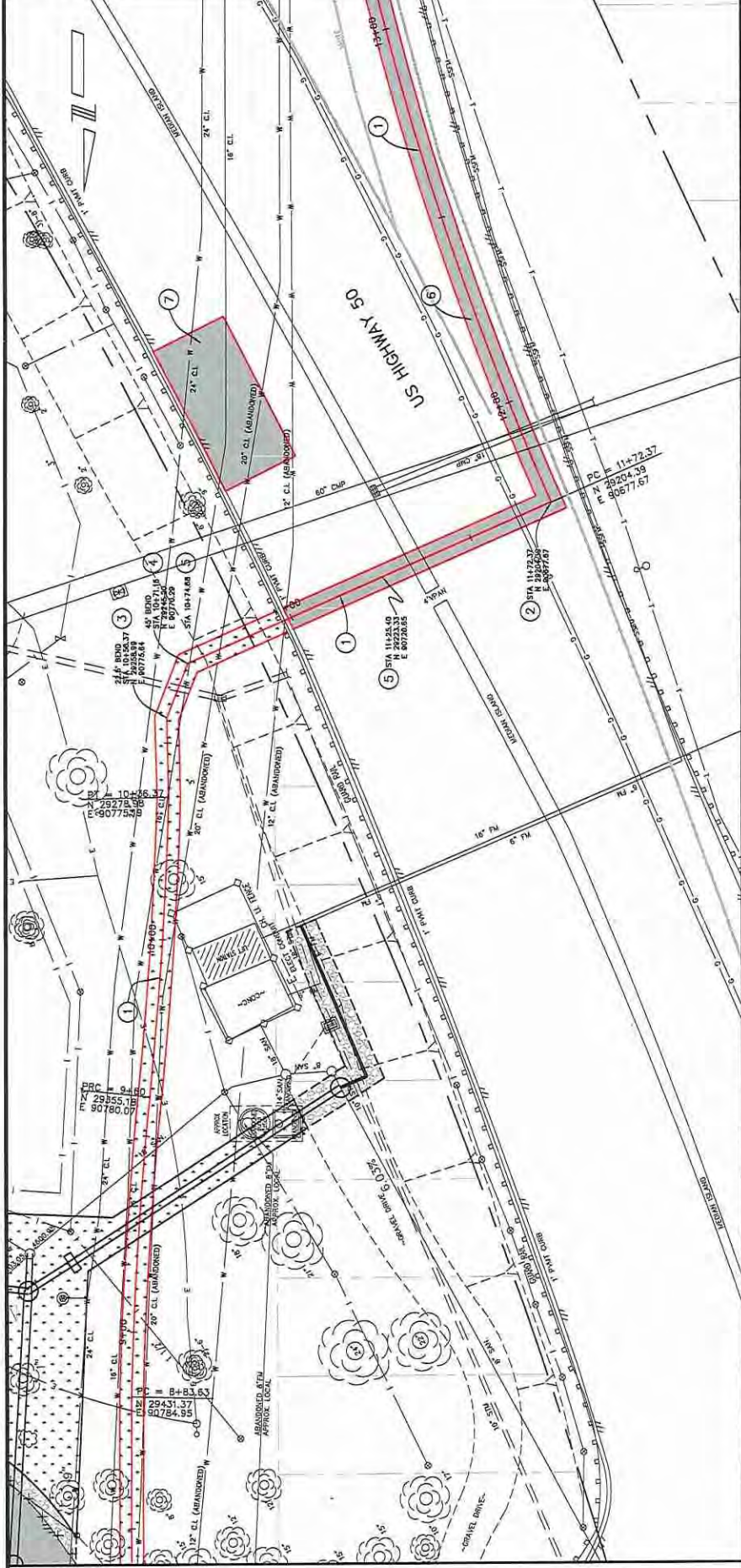
REVISION C ADDITIONAL EXISTING TOPO 1/27/05

REVISION D AS BUILT 1/27/05

CONSTRUCTION NOTES

- 104 - FURNISH AND INSTALL 24" C-905, CLASS 165, DR25, PVC WATERLINE.
ADDITIONAL REQUIREMENTS WHEN WATER LINE IS INSTALLED WITHIN CDOT ROW: (WATER LINE STA. 10+88 TO STA. 14+50) MINIMUM COVER TO TOP OF PIPE SHALL BE 54" (FINISHED GRADE TO TOP OF PIPE).
206 - STRUCTURAL BACKFILL (FLOW-FILL)
THE TOP 36" OF BACKFILL MATERIAL (FROM BOTTOM OF ASPHALT) SHALL BE FLOWFILL. FLOWFILL WILL BE PAID FOR SEPARATELY. THE PAID QUANTITY FOR FLOWFILL WILL HAVE A MAXIMUM WIDTH OF 6 FEET AND MAXIMUM DEPTH OF 36".
TRAFFIC CONTROL PLAN MUST BE REVIEWED AND APPROVED BY CDOT PRIOR TO ISSUING PERMIT AND START OF WORK. REQUIREMENTS AS LISTED ON ATTACHED PAGE 2 OF UTILITY PERMIT APPLICATION.
NO CONSTRUCTION ACTIVITY OR LANE CLOSURES (OTHER THAN TRAFFIC CONTROL SETUP) MAY OCCUR OUTSIDE OF 9 PM TO 6 AM.
FINAL PAVEMENT SURFACE MUST BE IN PLACE BEFORE LANES CAN RE-OPENED.
ONE LANE OF TRAFFIC IN EACH DIRECTION WILL BE MAINTAINED DURING THE WORK. FLAGGERS WILL BE REQUIRED IF NEEDED TO DIRECT TRAFFIC.
- 104 - FURNISH AND INSTALL A 24" - 90° DIP BEND, CONNECT (MJ BY MJ) TO 24" PVC, PLACE CONCRETE THRUST BLOCK AT 90° BEND TO RESTRAIN 24" PVC WATER MAIN. THE CONTRACT UNIT PRICE FOR 24" - 90° DIP BEND SHALL INCLUDE THE COST OF ALL CONNECTIONS. (REFER TO PAGE W-07 OF THE STANDARD CONTRACT DOCUMENTS)
- 104 - FURNISH AND INSTALL A 24" - 22 1/2° DIP BEND, CONNECT (MJ BY MJ) TO 24" PVC WATER MAIN. PLACE CONCRETE THRUST BLOCK AT 22 1/2° BEND. THE CONTRACT UNIT PRICE FOR BENDS SHALL INCLUDE THE COST OF ALL CONNECTIONS (REFER TO PAGES W-07 OF THE STANDARD CONTRACT DOCUMENTS)
- 104 - FURNISH AND INSTALL A 24" - 45° DIP BEND (HORIZONTAL). THE CONTRACT UNIT PRICE FOR BENDS SHALL INCLUDE THE COST OF ALL CONNECTIONS (REFER TO PAGES W-07 OF THE STANDARD CONTRACT DOCUMENTS)
- 104 - FURNISH AND INSTALL A 24" - 45° DIP BEND (VERTICAL). THE CONTRACT UNIT PRICE FOR BENDS SHALL INCLUDE THE COST OF ALL CONNECTIONS (REFER TO PAGES W-07 OF THE STANDARD CONTRACT DOCUMENTS)
- ASPHALT REMOVAL AND T-TOP PATCH WITHIN CDOT ROW:
103.3 - ASPHALT REMOVAL: CUT AND REMOVE PAVEMENT 6" WIDE AS SHOWN. MILL (2" THICK) AND REMOVE ASPHALT PAVEMENT FOR AN ADDITIONAL 2 FEET ON BOTH SIDES OF THE FULL DEPTH REMOVAL. 2 FEET IS THE MINIMUM WIDTH. WIDTH OF MILL SHALL BE GREATER THAN 2 FEET IF NECESSARY TO KEEP JOINT OUT OF WHEEL PATH.
401-HOT BITUMINOUS PAVEMENT (6" THICK) (GRADING SX) (BINDER GRADE PG 64-22). HBP SHALL BE PLACED ON FLOWFILL BACKFILL MATERIAL.
7 REPAIR PAVEMENT DAMAGED BY WATER LINE LEAK. AS SHOWN, OR AS DIRECTED BY CITY.
304.08 - SUBGRADE STABILIZATION (CLASS 6 ABC) (CIP). SUBGRADE STABILIZATION SHALL BE A MINIMUM OF 12" IN DEPTH. DEPTH MAY BE INCREASED AS DIRECTED BY CITY TO REMOVE SATURATED SUBGRADE.
401-HOT BITUMINOUS PAVEMENT (6" THICK) (GRADING SX) (BINDER GRADE PG 64-22).

SEE BELOW



PROJECT CONTROL DATA	
POINT	NORTHING EASTING STATION OFFSET ELEVATION DESCRIPTION
702	30876.29 90338.28 24+82.29 38.43 4628.05 NO. 5 REBAR
700	30208.76 91401.55 4628.01 CGS. PIVOT MARK
402	30209.28 90799.54 13+24.64 6.10 4628.03 CITY SURVEY MONUMENT
401	28291.87 108237.88 10+34.50 17.10 4628.03 CITY SURVEY MONUMENT

4625	9+00	REMOVE EXISTING 20" WATER LINE AS NEEDED TO CONSTRUCT NEW 24" WATERLINE
4620	10+00	REMOVE EXISTING 16" WATER LINE AS NEEDED TO CONSTRUCT NEW 24" WATERLINE
4615	10+71.16	INSTALL 45° BEND (HORIZONTAL)
4610	10+74.68	INSTALL 45° BEND (VERTICAL)
4605	11+25.40	INSTALL 45° BEND (VERTICAL)
4600	11+25.40	PROVIDE A MINIMUM OF 6" CLEARANCE UNDER EXISTING 18" STORM
4595	12+00	

10+00 11+00 12+00

SCALE: 1" = 10'

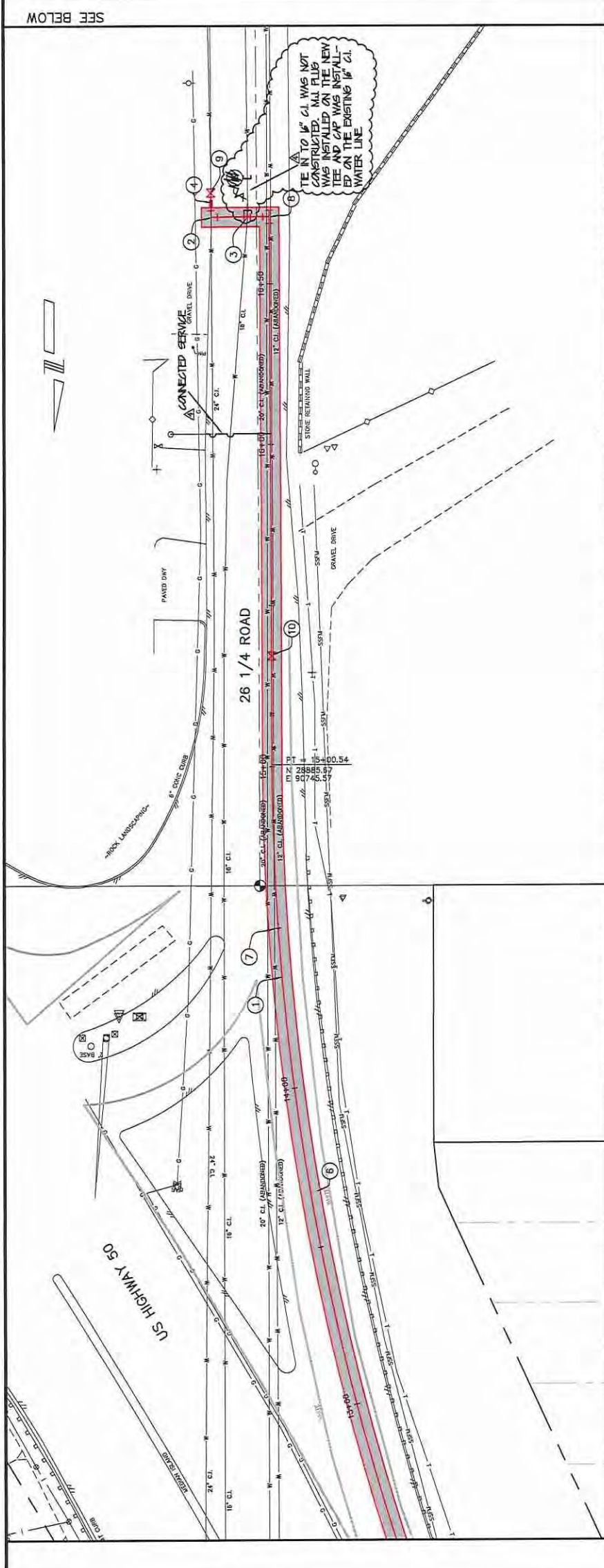
DATE: 7/19/06
 DESIGNED BY: [Signature]
 CHECKED BY: [Signature]
 APPROVED BY: [Signature]

DESCRIPTION: NEW DRAWING FOR CONTINUATION OF NEW 24" WATER LINE IN CANON STREET
 REVISION: ADDITIONAL EXISTING TOPO
 REVISION: AS BUILT

CITY OF Grand Junction COLORADO
 PUBLIC WORKS AND UTILITIES ENGINEERING DIVISION

DUCK POND PARK LIFT STATION
 ELIMINATION AND GRAVITY SEWER CONSTRUCTION
 WATER LINE REPLACEMENT PLANS
 CANON STREET

12



PROJECT CONTROL DATA	
POINT	NORTHING
702	30976.29
700	30709.76
697	29537.07
701	30401.95
699	29264.64
697	29137.60
703	31124.64
701	30000.00
699	29873.00
700	30709.76
698	29537.07
702	30976.29
704	31700.00
702	30540.00
700	30413.00
698	30286.00
696	30159.00
694	30032.00
692	29905.00
690	29778.00
688	29651.00
686	29524.00
684	29397.00
682	29270.00
680	29143.00
678	29016.00
676	28889.00
674	28762.00
672	28635.00
670	28508.00
668	28381.00
666	28254.00
664	28127.00
662	28000.00
660	27873.00
658	27746.00
656	27619.00
654	27492.00
652	27365.00
650	27238.00
648	27111.00
646	26984.00
644	26857.00
642	26730.00
640	26603.00
638	26476.00
636	26349.00
634	26222.00
632	26095.00
630	25968.00
628	25841.00
626	25714.00
624	25587.00
622	25460.00
620	25333.00
618	25206.00
616	25079.00
614	24952.00
612	24825.00
610	24698.00
608	24571.00
606	24444.00
604	24317.00
602	24190.00
600	24063.00
598	23936.00
596	23809.00
594	23682.00
592	23555.00
590	23428.00
588	23301.00
586	23174.00
584	23047.00
582	22920.00
580	22793.00
578	22666.00
576	22539.00
574	22412.00
572	22285.00
570	22158.00
568	22031.00
566	21904.00
564	21777.00
562	21650.00
560	21523.00
558	21396.00
556	21269.00
554	21142.00
552	21015.00
550	20888.00
548	20761.00
546	20634.00
544	20507.00
542	20380.00
540	20253.00
538	20126.00
536	20000.00
534	19873.00
532	19746.00
530	19619.00
528	19492.00
526	19365.00
524	19238.00
522	19111.00
520	18984.00
518	18857.00
516	18730.00
514	18603.00
512	18476.00
510	18349.00
508	18222.00
506	18095.00
504	17968.00
502	17841.00
500	17714.00
498	17587.00
496	17460.00
494	17333.00
492	17206.00
490	17079.00
488	16952.00
486	16825.00
484	16698.00
482	16571.00
480	16444.00
478	16317.00
476	16190.00
474	16063.00
472	15936.00
470	15809.00
468	15682.00
466	15555.00
464	15428.00
462	15301.00
460	15174.00
458	15047.00
456	14920.00
454	14793.00
452	14666.00
450	14539.00
448	14412.00
446	14285.00
444	14158.00
442	14031.00
440	13904.00
438	13777.00
436	13650.00
434	13523.00
432	13396.00
430	13269.00
428	13142.00
426	13015.00
424	12888.00
422	12761.00
420	12634.00
418	12507.00
416	12380.00
414	12253.00
412	12126.00
410	12000.00
408	11873.00
406	11746.00
404	11619.00
402	11492.00
400	11365.00
398	11238.00
396	11111.00
394	10984.00
392	10857.00
390	10730.00
388	10603.00
386	10476.00
384	10349.00
382	10222.00
380	10095.00
378	9968.00
376	9841.00
374	9714.00
372	9587.00
370	9460.00
368	9333.00
366	9206.00
364	9079.00
362	8952.00
360	8825.00
358	8698.00
356	8571.00
354	8444.00
352	8317.00
350	8190.00
348	8063.00
346	7936.00
344	7809.00
342	7682.00
340	7555.00
338	7428.00
336	7301.00
334	7174.00
332	7047.00
330	6920.00
328	6793.00
326	6666.00
324	6539.00
322	6412.00
320	6285.00
318	6158.00
316	6031.00
314	5904.00
312	5777.00
310	5650.00
308	5523.00
306	5396.00
304	5269.00
302	5142.00
300	5015.00
298	4888.00
296	4761.00
294	4634.00
292	4507.00
290	4380.00
288	4253.00
286	4126.00
284	3999.00
282	3872.00
280	3745.00
278	3618.00
276	3491.00
274	3364.00
272	3237.00
270	3110.00
268	2983.00
266	2856.00
264	2729.00
262	2602.00
260	2475.00
258	2348.00
256	2221.00
254	2094.00
252	1967.00
250	1840.00
248	1713.00
246	1586.00
244	1459.00
242	1332.00
240	1205.00
238	1078.00
236	951.00
234	824.00
232	697.00
230	570.00
228	443.00
226	316.00
224	189.00
222	62.00
220	-65.00
218	-192.00
216	-319.00
214	-446.00
212	-573.00
210	-700.00
208	-827.00
206	-954.00
204	-1081.00
202	-1208.00
200	-1335.00
198	-1462.00
196	-1589.00
194	-1716.00
192	-1843.00
190	-1970.00
188	-2097.00
186	-2224.00
184	-2351.00
182	-2478.00
180	-2605.00
178	-2732.00
176	-2859.00
174	-2986.00
172	-3113.00
170	-3240.00
168	-3367.00
166	-3494.00
164	-3621.00
162	-3748.00
160	-3875.00
158	-4002.00
156	-4129.00
154	-4256.00
152	-4383.00
150	-4510.00
148	-4637.00
146	-4764.00
144	-4891.00
142	-5018.00
140	-5145.00
138	-5272.00
136	-5399.00
134	-5526.00
132	-5653.00
130	-5780.00
128	-5907.00
126	-6034.00
124	-6161.00
122	-6288.00
120	-6415.00
118	-6542.00
116	-6669.00
114	-6796.00
112	-6923.00
110	-7050.00
108	-7177.00
106	-7304.00
104	-7431.00
102	-7558.00
100	-7685.00
98	-7812.00
96	-7939.00
94	-8066.00
92	-8193.00
90	-8320.00
88	-8447.00
86	-8574.00
84	-8701.00
82	-8828.00
80	-8955.00
78	-9082.00
76	-9209.00
74	-9336.00
72	-9463.00
70	-9590.00
68	-9717.00
66	-9844.00
64	-9971.00
62	-10098.00
60	-10225.00
58	-10352.00
56	-10479.00
54	-10606.00
52	-10733.00
50	-10860.00
48	-10987.00
46	-11114.00
44	-11241.00
42	-11368.00
40	-11495.00
38	-11622.00
36	-11749.00
34	-11876.00
32	-12003.00
30	-12130.00
28	-12257.00
26	-12384.00
24	-12511.00
22	-12638.00
20	-12765.00
18	-12892.00
16	-13019.00
14	-13146.00
12	-13273.00
10	-13400.00
8	-13527.00
6	-13654.00
4	-13781.00
2	-13908.00
0	-14035.00

- PROJECT NO. 904-F10114
- CONSTRUCTION NOTES
- 104 - FURNISH AND INSTALL 24" C-905, CLASS 165, DR25, PVC WATERLINE.
ADDITIONAL REQUIREMENTS WHEN WATER LINE IS INSTALLED WITHIN CDOT ROW: (WATER LINE STA. 10+88 TO STA. 14+50) MINIMUM COVER TO TOP OF PIPE SHALL BE 54" (FINISHED GRADE TO TOP OF PIPE).
 - THE FIRST 36" OF BACKFILL MATERIAL (FROM BOTTOM OF ASPHALT) SHALL BE FLOWELL FLOWELL WILL BE PAID FOR SEPARATELY. THE PAID QUANTITY FOR FLOWELL WILL HAVE A MAXIMUM WIDTH OF 6 FEET AND MAXIMUM DEPTH OF 36".
 - TRAFFIC CONTROL PLAN MUST BE REVIEWED AND APPROVED BY CDOT PRIOR TO ISSUING PERMIT AND START OF WORK. REQUIREMENTS AS LISTED ON ATTACHED PAGE 2 OF UTILITY PERMIT APPLICATION.
 - NO CONSTRUCTION ACTIVITY OR LANE CLOSURES (OTHER THAN TRAFFIC CONTROL SETUP) MAY OCCUR OUTSIDE OF 9 PM TO 6 AM.
 - FINAL PAVEMENT SURFACE MUST BE IN PLACE BEFORE LANES CAN RE-OPENED.
 - ONE LANE OF TRAFFIC IN EACH DIRECTION WILL BE MAINTAINED DURING THE WORK. FLAGGERS WILL BE REQUIRED IF NEEDED TO DIRECT TRAFFIC.
 - 104 - FURNISH AND INSTALL A 24" - 90° DIP BEND, CONNECT (MJ BY MJ) TO 24" PVC, PLACE CONCRETE THRUST BLOCK AT 80" BEND TO RESTRAIN 24" PVC WATER MAIN. THE CONTRACT UNIT PRICE FOR 24" - 90° DIP BEND SHALL INCLUDE THE COST OF ALL CONNECTIONS. (REFER TO PAGE W-07 OF THE STANDARD CONTRACT DOCUMENTS)
 - 104 - FURNISH AND INSTALL A 24" X 24" X 24" X 16" DIP TEE. CONNECT 16" LEG OF TEE (SOUTH) TO SOLID SLEEVE AND SOLID SLEEVE TO EXISTING 16" CI WATER LINE. CONNECT 24" LEGS TO 24" PVC WATER MAIN (MJ BY MJ). PLACE CONCRETE THRUST BLOCK NORTH OF TEE TO RESTRAIN EXISTING 16" CI WATER LINE. THE CONTRACT UNIT PRICE FOR 24" X 24" X 24" X 16" DIP TEE SHALL INCLUDE THE COST OF SOLID SLEEVE, AND CONNECTIONS TO PIPE.
 - 104 - FURNISH AND INSTALL SOLID SLEEVE. CONNECT EXISTING 24" CI WATER LINE TO NEW 24" PVC WATER LINE. THE CONTRACT UNIT PRICE FOR 24" WATERLINE SHALL INCLUDE THE COST OF SOLID SLEEVE AND CONNECTIONS TO EXISTING PIPE.
 - 104 - FURNISH AND INSTALL SOLID SLEEVE. CONNECT EXISTING 16" CI WATER LINE TO NEW 16" PVC WATER LINE USING SOLID SLEEVE. THE CONTRACT UNIT PRICE FOR 16" WATERLINE SHALL INCLUDE THE COST OF SOLID SLEEVE AND CONNECTIONS TO EXISTING PIPE.
 - ASPHALT REMOVAL AND T-TOP PATCH WITHIN CDOT ROW.
 - 103.3 - ASPHALT REMOVAL. CUT AND REMOVE PAVEMENT 6" WIDE AS SHOWN. MILL (2" THICK) AND REMOVE ASPHALT PAVEMENT FOR AN ADDITIONAL 2 FEET ON BOTH SIDES OF THE FULL DEPTH REMOVAL. 2 FEET IS THE MINIMUM WIDTH. WIDTH OF MILL SHALL BE GREATER THAN 2 FEET IF NECESSARY TO KEEP JOINT OUT OF WHEEL PATH.
 - 401-HOT BITUMINOUS PAVEMENT (6" THICK) (GRADING SX) (UNDER GRADE PG 64-22). HBP SHALL BE PLACED ON FLOWELL BACKFILL MATERIAL.
 - END OF ADDITIONAL REQUIREMENTS FOR CDOT ROW.
 - 104 - FURNISH AND INSTALL A 24" X 24" X 24" DIP TEE. CONNECT 24" LEGS OF TEE (NORTH AND EAST) 24" PVC WATER MAIN (MJ BY MJ). CONNECT 24" LEG OF TEE (SOUTH) TO RESTRAINED CAP. PLACE CONCRETE THRUST BLOCK WEST AND SOUTH OF TEE. CONCRETE THRUST BLOCK SHOULD BE PLACED IN SUCH A WAY THAT IT DOES NOT PREVENT FUTURE TIE IN TO THE SOUTH LEG OF THE TEE. THE CONTRACT UNIT PRICE FOR 24" X 24" X 24" DIP TEE SHALL INCLUDE THE COST OF THE RESTRAINED CAP AND CONNECTIONS TO PIPE.
 - 24" BUTTERFLY VALVE INSTALLED BY CITY CREWS. THIS VALVE HAS BEEN INSTALLED WITH A THRUST RESTRAINT WALL, ALLOWING PRESSURE TO REMAIN ON THE SOUTH SIDE OF THE VALVE DURING CONNECTION OF 24" PVC ON THE NORTH SIDE.
 - FURNISH AND INSTALL 24" BUTTERFLY VALVE. CONNECT VALVE TO 24" PVC WATER MAIN (MJ BY MJ). THE CONTRACT UNIT PRICE FOR THE 24" BUTTERFLY VALVE SHALL INCLUDE THE COST OF ALL CONNECTIONS.

SEE BELOW

DUCK POND PARK LIFT STATION
ELIMINATION AND GRAVITY SEWER CONSTRUCTION
WATER LINE REPLACEMENT PLANS
CANON STREET

PUBLIC WORKS



Las Colonias Business Park Site

Colorado River

Eagle Rim Park

Domestic water taps to be eliminated with this project

Future domestic taps to be eliminated

Parks Raw Water Irrigation Supply Phase I Overview

Riverside Park

Jarvis site

Botanical Gardens

Amphiheater

Duck Pond Park

Riverside Pkwy at Hwy 50

Parks Raw Water Irrigation Supply Line from Water Plant

Downtown

Riverside Parkway

US Hwy 50

RIVERSIDE PKWY

D RD

15th St

15th St

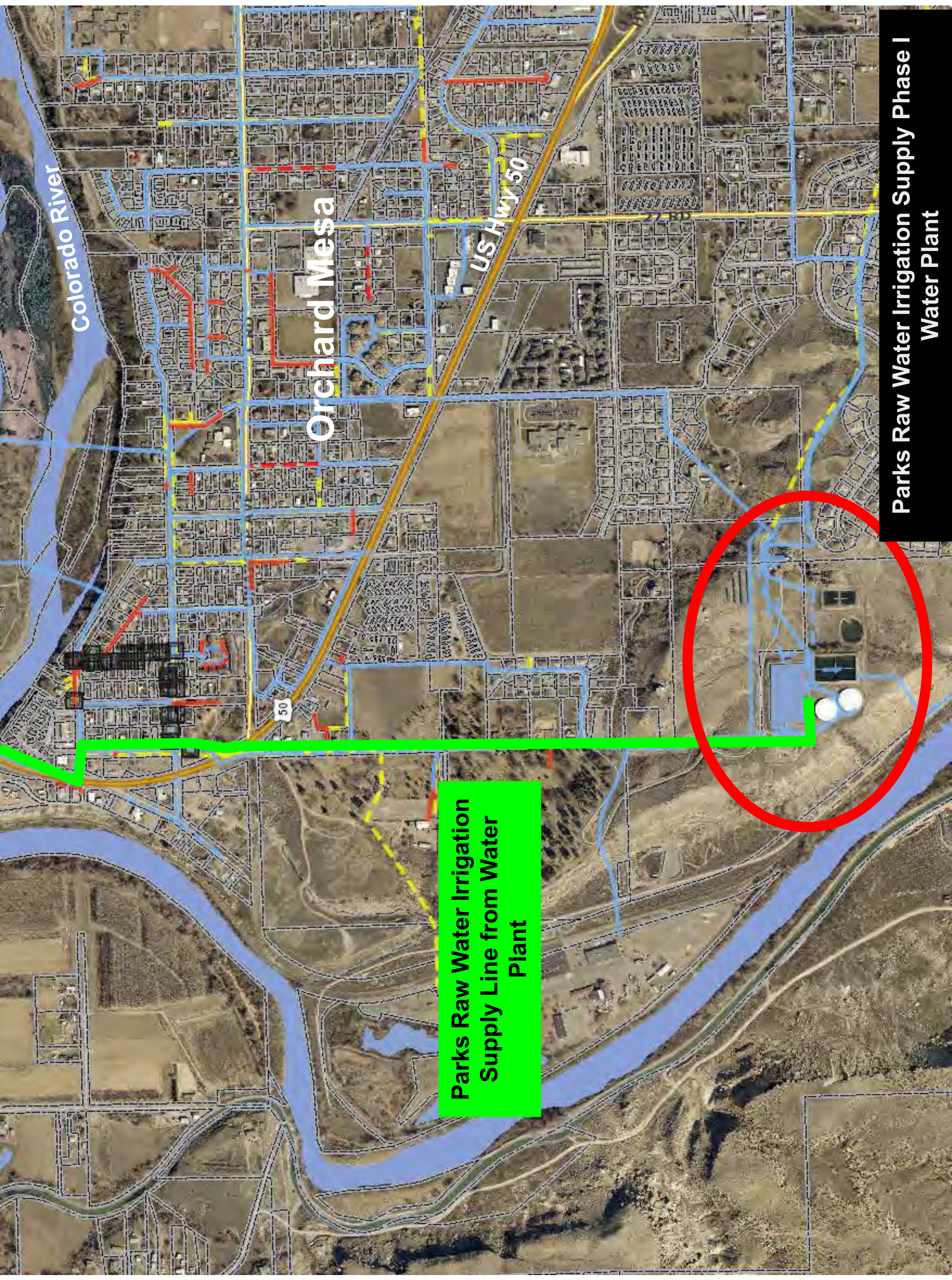
RIVERSIDE PKWY

UNAWEEP AVE

B-11/2 RD

ROSEVALE RD

27th Rd



Colorado River

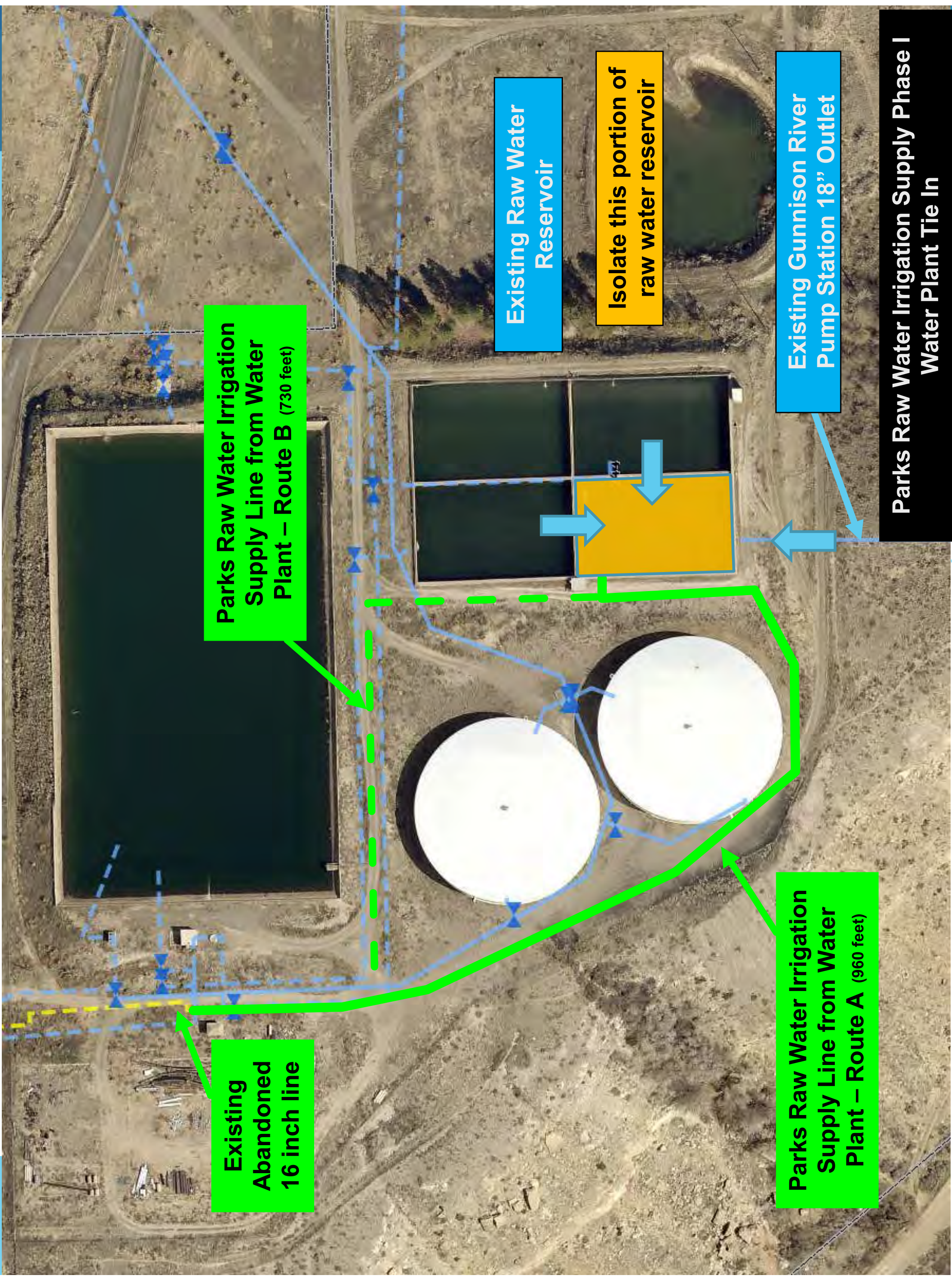
Orchard Mesa

US Hwy 50

50

Parks Raw Water Irrigation
Supply Line from Water
Plant

Parks Raw Water Irrigation Supply Phase I
Water Plant



Parks Raw Water Irrigation Supply Line from Water Plant – Route B (730 feet)

Existing Abandoned 16 inch line

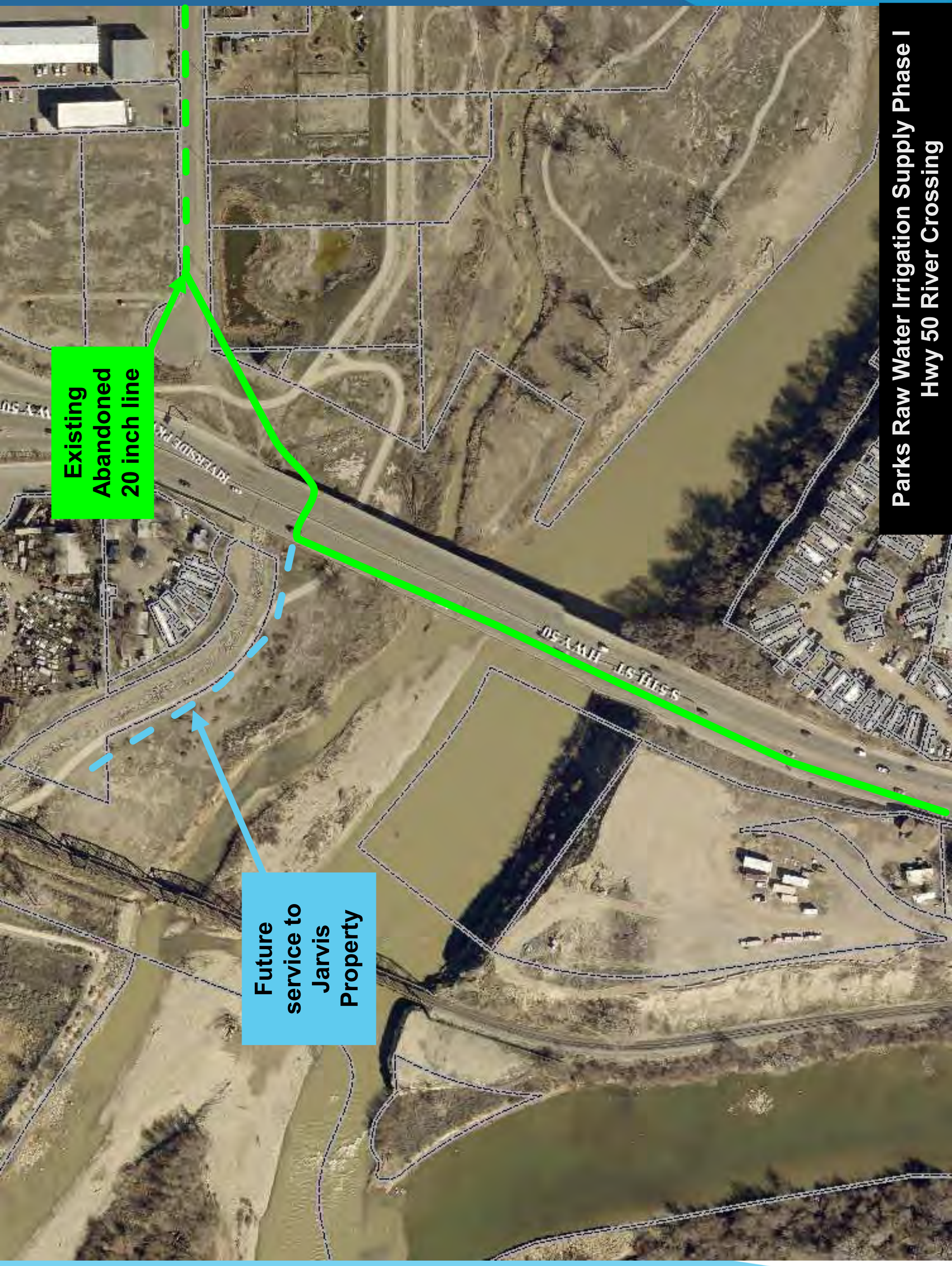
Parks Raw Water Irrigation Supply Line from Water Plant – Route A (960 feet)

Existing Raw Water Reservoir

Isolate this portion of raw water reservoir

Existing Gunnison River Pump Station 18" Outlet

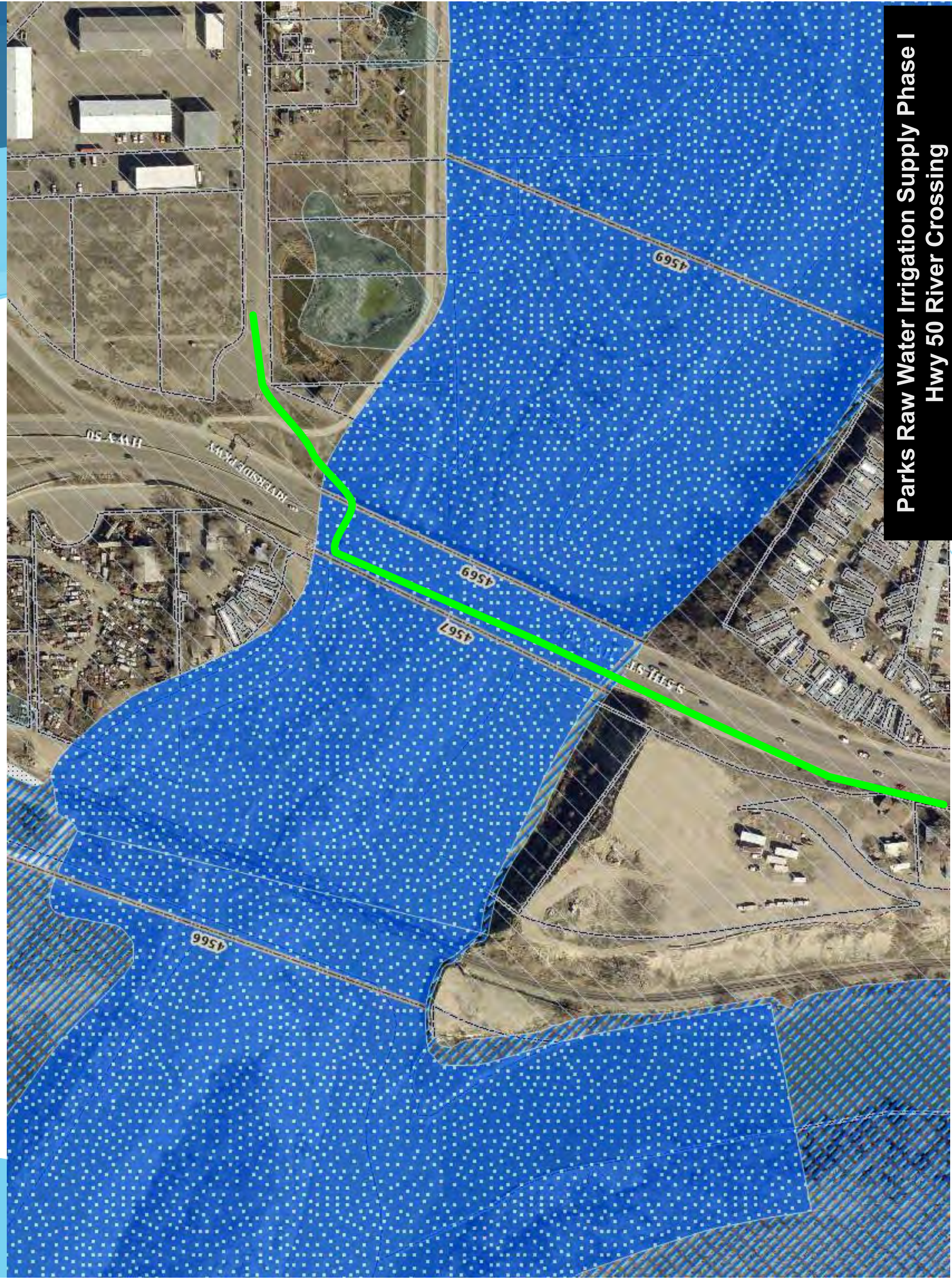
Parks Raw Water Irrigation Supply Phase I Water Plant Tie In



**Existing
Abandoned
20 inch line**

**Future
service to
Jarvis
Property**

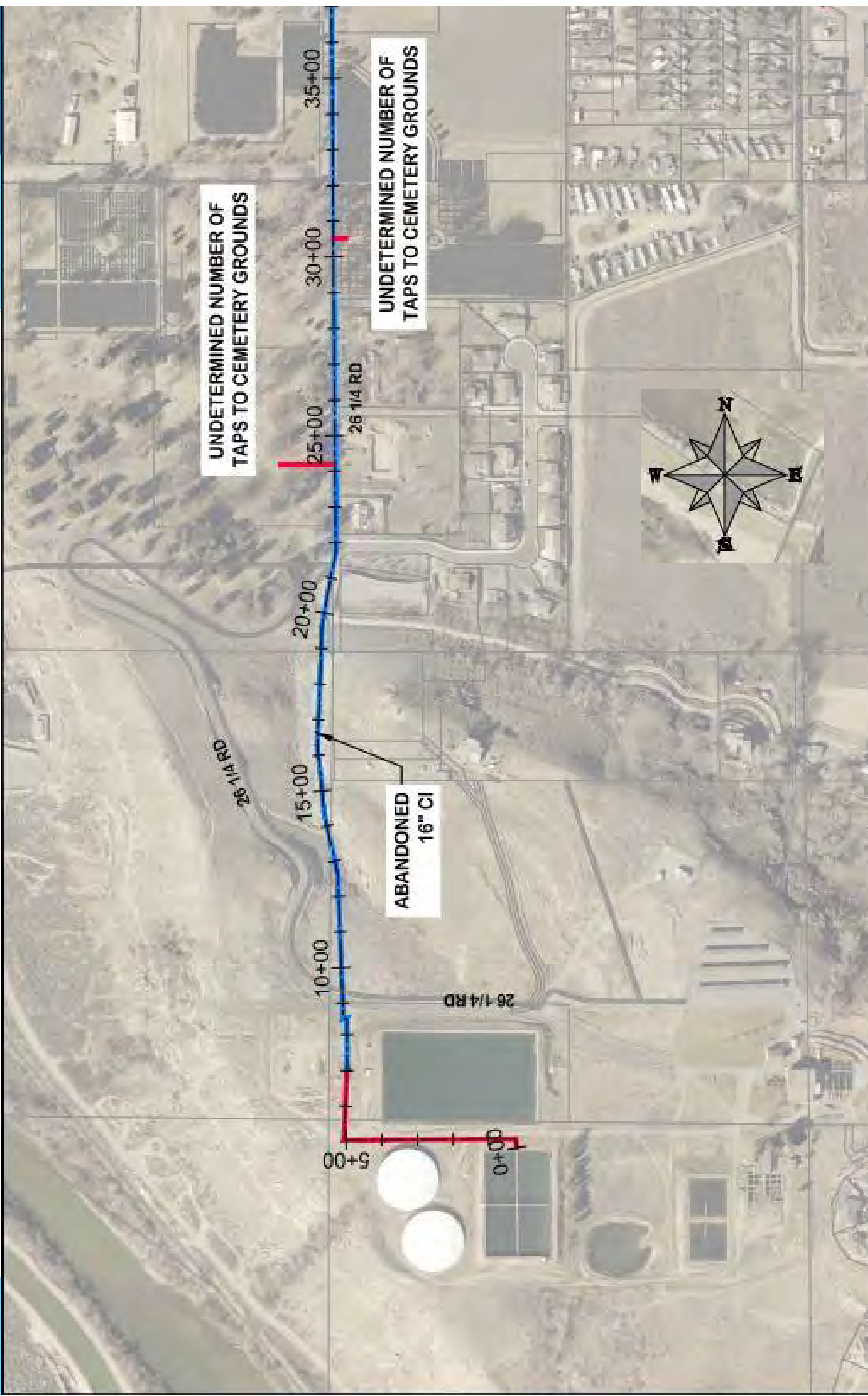
**Parks Raw Water Irrigation Supply Phase I
Hwy 50 River Crossing**



**Parks Raw Water Irrigation Supply Phase I
Hwy 50 River Crossing**



**Parks Raw Water Irrigation Supply Phase I
Hwy 50 River Crossing – View looking north
from Rivefront Trail**



PROJECT NO.





LEGEND

- POTENTIAL CONFLICT LOCATION
- NEW LINE INSTALLATION
- CURED IN PLACE OR SLIP LINE INSIDE ABANDONED PIPE

NUMBER & LOCATION OF TAPS WILL NEED TO BE VERIFIED