



Purchasing Division

ADDENDUM NO. 1

DATE: February 2, 2018
FROM: City of Grand Junction Purchasing Division
TO: All Offerors
RE: 2018 Waterline Replacement Project – Elm Avenue (28 ¼ Road – 28 ¾ Road)
IFB-4464-18-DH

Offerors responding to the above referenced solicitation are hereby instructed that the requirements have been clarified, modified, superseded and supplemented as to this date as hereinafter described.

Please make note of the following clarifications:

Replace the original Bid Schedule with the updated Bid Schedule that is attached to this Addendum.

Replace Sheet 8 of the construction plans with the updated Sheet 8 that is attached to this Addendum. A mistake with the construction notes was discovered at the intersection of Elm Ave. and Elm Drive.

Question #1 – Will the project be using GV-B (4,000 psi) or Class D (4,500 psi)?

Answer – This Project will require the CDOT Class D (4,500 psi) concrete mix design per the 2017 CDOT Standard Specifications for Road and Bridge Construction for all surface concrete including: curb, gutter, and sidewalks, drainage pans, and concrete intersection corners.

For capping the sewer pipe or encasing the sewer pipe in concrete, the City will allow the use of either the CDOT Class D (4,500 psi) mix design or the Class GV-B (4,000 psi) mix design per Section 601.02 in the City of Grand Junction's Standard Contract Documents for Capital Improvements Construction.

Question #2 – Bid Item #9, Gate Valve (8") (MJ), shows quantity of 4, but on the plans I see 5. 14+65.28, 26+44.93, 28+47, 28+71.89 (note says two 8", but not actually shown). Also would have to run some 8" pipe between 8"x3" tee and 8" valves according to note #411 and bid item #11 (8"x3" MJ Tee), is this what is actually wanted?

Answer – After reviewing the plans, the quantity of 8" Gate Valves (MJ) has been changed to 3 total. A call-out error was found on sheet 8 at Station 28+71.89. A revised sheet 8 is included with this Addendum.

Yes, 8" pipe would be necessary between the 8" valve and the 8"x3" tee. The 3" gate valve should bolt directly to the 8"x3" tee fitting.

Question #3 – Bid Item #13, Elbow (6" x 45-deg) (MJ), shows a quantity of 8, but only 4 are shown on the plans, 14+56.20, 14+65.31, 26+44.97, and 26+49.00...are the rest for utility conflicts?

Answer – Yes, it's anticipated that additional elbows may be needed due to utility conflict(s).

Question #4 – Bid Item #14, Elbow (8" x 45-deg) (MJ), shows a quantity of 2, but only 1 is shown on the plans, 36+04.51...are the rest for utility conflicts?

Answer – Yes, it's anticipated that additional elbows may be needed due to utility conflict(s). The quantity of Elbows (8" x 45-deg) has been increased to 5.

Question #5 – Bid Item #15, Elbow (8" x 22.5-deg) (MJ), shows a quantity of 2, but I see 0?

Answer – The City would like to have a unit price on 8" x 22.5-deg elbows just in case this degree of elbow is needed for any reason during the project there is already an established unit price for this item.

Question #6 – Bid Item #23 and #27, Tapping Saddle (8" x 1") and Corporation Stop (1"), shows a quantity of 5, but I see 4 (32+21, 33+16, 33+20, 34+81)?

Answer – The quantity should stay at 5. There's a 1" water service at station 32+24.

Clarification #1 – The Contractor is allowed to temporarily close the intersection of Elm Ave. and 28 ½ Road to traffic (all directions) during the stated working hours for the waterline installation within the intersection. The Contractor's traffic control company shall provide traffic control plans to the City highlighting the necessary detour routes for this intersection closure.

Clarification #2 – The City of Grand Junction will complete the bacteriological (chemical and physical) quality testing and the chlorine residual tests. Contractor shall assist the City's Water Dept. in collecting water samples at necessary locations. The Contractor is responsible for providing chlorine for pipeline disinfection and for flushing the waterline. If necessary, the City Water Dept. can assist in flushing operations by providing a flush box.

Clarification #3 – The City has contacted the local school bus representative and it appears this stretch of Elm Ave. is not on the main routes for student pick-up and drop-off. However, there may be children with special needs that First Student needs to provide transportation services to on an as needed basis. In all cases, the Contractor will need to accommodate the services of school buses during the construction project.

The original solicitation for the project noted above is amended as noted.

All other conditions of subject remain the same.

Respectfully,



Duane Hoff Jr., Senior Buyer
City of Grand Junction, Colorado

Bid Schedule: 2018 Waterline Replacement Project - Elm Avenue

ADDENDUM #1

Item No.	CDOT, City Ref.	Description	Quantity	Units	Unit Price	Total Price
1	108.2	Water Main (1-1/2") (HDPE) (Service Line) (If lead service line is encountered, water service shall be replaced to meter) (Includes cost of connection to existing pipe)	10.	Lin. Ft.	\$ _____	\$ _____
2	108.2	Water Main (2") (HDPE) (Service Line) (If lead service line is encountered, water service shall be replaced to meter) (Includes cost of connection to existing pipe)	10.	Lin. Ft.	\$ _____	\$ _____
3	108.2	Water Main (3") (Class 200 PSI) (ASTM D-2241) (Includes cost of connection to existing waterline using a Hymax Coupling)	25.	Lin. Ft.	\$ _____	\$ _____
4	108.2	Water Main (6") (C-900 PVC, DR-18) (Includes cost of connection to existing waterline / valve / fitting)	240.	Lin. Ft.	\$ _____	\$ _____
5	108.2	Water Main (8") (C-900 PVC, DR-18) (Includes cost of connection to existing waterline / valve / fitting)	2,570.	Lin. Ft.	\$ _____	\$ _____
6	108.2	Imported Trench Backfill (Class 3) (Includes haul and disposal of unsuitable excavated material) (Assumed Unit Weight = 133 lbs/ft ³)	750.	Ton	\$ _____	\$ _____
7	108.3	Gate Valve (3") (MJ)	1.	Each	\$ _____	\$ _____
8	108.3	Gate Valve (6") (MJ)	8.	Each	\$ _____	\$ _____
9	108.3	Gate Valve (8") (MJ)	3.	Each	\$ _____	\$ _____
10	108.3	Tee (6" x 6") (Swivel Tee)	1.	Each	\$ _____	\$ _____
11	108.3	Tee (8" x 3") (MJ)	1.	Each	\$ _____	\$ _____
12	108.3	Tee (8" x 6") (Swivel Tee)	7.	Each	\$ _____	\$ _____
13	108.3	Elbow (6" x 45-deg) (MJ)	8.	Each	\$ _____	\$ _____
14	108.3	Elbow (8" x 45-deg) (MJ) (Use as necessary due to a utility conflict)	5.	Each	\$ _____	\$ _____
15	108.3	Elbow (8" x 22.5-deg) (MJ)	2.	Each	\$ _____	\$ _____

Bid Schedule: 2018 Waterline Replacement Project - Elm Avenue

ADDENDUM #1

Item No.	CDOT, City Ref.	Description	Quantity	Units	Unit Price	Total Price
16	108.3	Reducer (8" x 6") (MJ)	1.	Each	\$ _____	\$ _____
17	108.3	Fire Hydrant Assembly	6.	Each	\$ _____	\$ _____
18	108.3	6" Offset Fittings (D=18") (MJxMJ) (Use as necessary due to a utility conflict)	4.	Each	\$ _____	\$ _____
19	108.3	8" Offset Fittings (D=18") (MJxMJ) (Use as necessary due to a utility conflict)	4.	Each	\$ _____	\$ _____
20	108.4	3/4" Water Service Line (Type K Copper) (If Lead or Poly service line is encountered, water service shall be replaced to meter) (Includes cost of connection to existing pipe)	220.	Lin. Ft.	\$ _____	\$ _____
21	108.4	1" Water Service Line (Type K Copper) (If Lead or Poly service line is encountered, water service shall be replaced to meter) (Includes cost of connection to existing pipe)	25.	Lin. Ft.	\$ _____	\$ _____
22	108.4	Tapping Saddle (8" x 3/4")	44.	Each	\$ _____	\$ _____
23	108.4	Tapping Saddle (8" x 1")	5.	Each	\$ _____	\$ _____
24	108.4	Tapping Saddle (8" x 1-1/2")	1.	Each	\$ _____	\$ _____
25	108.4	Tapping Saddle (8" x 2")	1.	Each	\$ _____	\$ _____
26	108.4	Corporation Stop (3/4")	44.	Each	\$ _____	\$ _____
27	108.4	Corporation Stop (1")	5.	Each	\$ _____	\$ _____
28	108.4	Corporation Stop (1-1/2")	1.	Each	\$ _____	\$ _____
29	108.4	Corporation Stop (2")	1.	Each	\$ _____	\$ _____
30	108.4	Meter setter and meter pit (Install Only) (City Furnished)	4.	Each	\$ _____	\$ _____
31	108.7	Granular Stabilization Material (Type B) (Crushed Rock) (Includes haul and disposal of unsuitable excavated material) (Assumed Unit Weight = 138 lbs/ft ³)	300.	Ton	\$ _____	\$ _____

Bid Schedule: 2018 Waterline Replacement Project - Elm Avenue ADDENDUM #1

Item No.	CDOT, City Ref.	Description	Quantity	Units	Unit Price	Total Price
32	202	Abandon Existing Water Valve (Close valve, remove top half of existing valve box, fill cavity to finished subgrade with flow-fill material)	6.	Each	\$ _____	\$ _____
33	202	Abandon Pipe (Abandon pipe by plugging ends with concrete)	7.	Each	\$ _____	\$ _____
34	202	Removal of Existing Fire Hydrant (Return Hydrant to City Water Dept.)	5.	Each	\$ _____	\$ _____
35	202	Removal of Existing Meter Pit	4.	Each	\$ _____	\$ _____
36	202	Removal of Existing Pipe (6" & 8" C.I. Pipe)	130.	Lin. Ft.	\$ _____	\$ _____
37	202	Removal of Existing Water Valve	3.	Each	\$ _____	\$ _____
38	202	Removal of Asphalt Mat (Planing) (2" Depth) (T-Top Section) (2' Wide) (Elm Avenue) (Per City Standard Detail GU-03)	1,000.	Sq. Yd.	\$ _____	\$ _____
39	202	Removal of Asphalt Mat (Planing) (4' Wide, Full Depth) (Per City Standard Detail GU-03)	1,500.	Sq. Yd.	\$ _____	\$ _____
40	202	Removal of Concrete (Includes but not limited to curb, gutter, sidewalk, driveway, slabs, V-pan, curb ramps, intersection corners, aprons, and landscape borders.)	540.	Sq. Ft.	\$ _____	\$ _____
41	203	Disposal of Radioactive Material (City Shops Location) (Mill Tailings are not anticipated to be found on Elm Ave.)	30.	Cu. Yd.	\$ _____	\$ _____
42	206	Structure Backfill (Flow-Fill) (As Required)	25.	Cu. Yd.	\$ _____	\$ _____
43	208	Concrete Washout Facility	1.	Lump Sum	---	\$ _____
44	208	Storm Drain Inlet Protection (Silt-Sack) (Includes Maintenance & Removal of Inlet Protection)	2.	Each	\$ _____	\$ _____

Bid Schedule: 2018 Waterline Replacement Project - Elm Avenue

ADDENDUM #1

Item No.	CDOT, City Ref.	Description	Quantity	Units	Unit Price	Total Price
45	210	Repair damage to unlocated irrigation lines, various sizes and materials (1" to 12" dia.)	4.	Each	\$ _____	\$ _____
46	210	Reset Landscape Appurtenance (Landscape Cobble Rock) (2837 Elm Ave.) (Match in Kind)	1.	Lump Sum	---	\$ _____
47	210	Reset Landscape Appurtenance (Wood Landscape Barrier) (2841 Elm Ave.)	1.	Lump Sum	---	\$ _____
48	210	Reset Ground Sign	1.	Each	\$ _____	\$ _____
49	210	Reset Fence (Wire Fence)	6.	Lin. Ft.	\$ _____	\$ _____
50	212	Sod (Includes 4" Thick of Topsoil placed prior to sod placement)	260.	Sq. Ft.	\$ _____	\$ _____
51	304	Aggregate Base Course (Class 6) (12" Thick)	1,500.	Sq. Yd.	\$ _____	\$ _____
52	304	Aggregate Base Course (Class 6) (4" Thick)(2' Wide)(Roadway Shoulder)	270.	Sq. Yd.	\$ _____	\$ _____
53	401	Hot Bituminous Pavement (Patching) (2" Thick) (Grading SX, PG 64-22) (GYR=75) (One 2" Lift) (Bottom Mat) (See City Standard Detail GU-03)	1,500.	Sq. Yd.	\$ _____	\$ _____
54	401	Hot Bituminous Pavement (Patching) (2" Thick) (Grading SX, PG 64-22) (GYR=75) (One 2" lift) (Top Mat) (Top Mat includes T-Top area) (See City Standard Detail GU-03)	2,200.	Sq. Yd.	\$ _____	\$ _____
55	401	Cold Mix Asphalt (4" Thick) (Temporary) (Use as necessary, as directed by Project Engineer)	50.	Sq. Yd.	\$ _____	\$ _____
56	407	Emulsified Asphalt (Tack Coat)	220.	Gallon	\$ _____	\$ _____
57	608	Concrete Curb, Gutter and Sidewalk (Match in Kind)	120.	Sq. Ft.	\$ _____	\$ _____
58	608	Concrete Drainage Pan (8" Thick) (See City Standard Detail C-12) (Includes #5 Rebar for Tie-Bars)	120.	Sq. Ft.	\$ _____	\$ _____

Bid Schedule: 2018 Waterline Replacement Project - Elm Avenue

ADDENDUM #1

Item No.	CDOT, City Ref.	Description	Quantity	Units	Unit Price	Total Price
59	608	Concrete Intersection Corner (Match in Kind)	160.	Sq. Ft.	\$ _____	\$ _____
60	608	Detectable Warning (Wet Set) (One Detectable Warning is 4 Sq. Ft.)	8.	Sq. Ft.	\$ _____	\$ _____
61	608	Cap Top Half of Sewer Pipe in concrete per Std. Detail GU-04 (20' long)	1.	Each	\$ _____	\$ _____
62	608	Encase Sewer Pipe in Concrete per Std. Detail GU-04 (20' long)	1.	Each	\$ _____	\$ _____
63	620	Portable Sanitary Facility	1.	Each	\$ _____	\$ _____
64	625	Construction Surveying	1.	Lump Sum	---	\$ _____
65	626	Mobilization	1.	Lump Sum	---	\$ _____
66	629	Survey Monumentation (Complete in Place) (As Needed)	2.	Each	\$ _____	\$ _____
67	630	Traffic Control Plan	1.	Lump Sum	---	\$ _____
68	630	Traffic Control (Complete in Place)	1.	Lump Sum	---	\$ _____
69	630	Flagging	180.	Hour	\$ _____	\$ _____
70	SC 3.3.21	Quality Control Testing	1.	Lump Sum	---	\$ _____
MCR		Minor Contract Revisions	---	---	---	\$ <u>30,000.00</u>

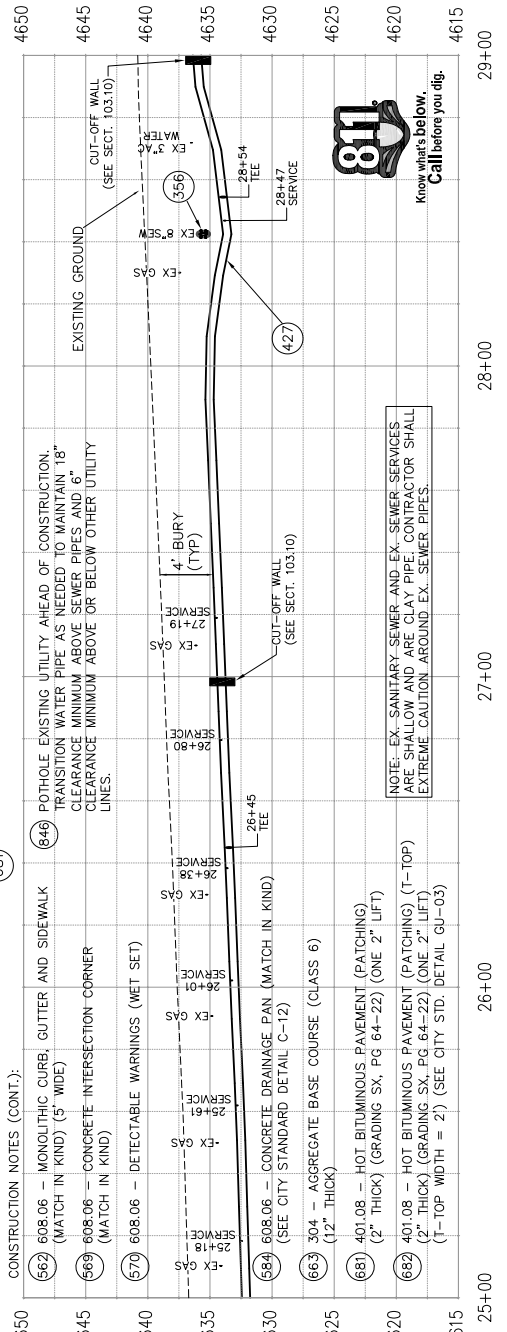
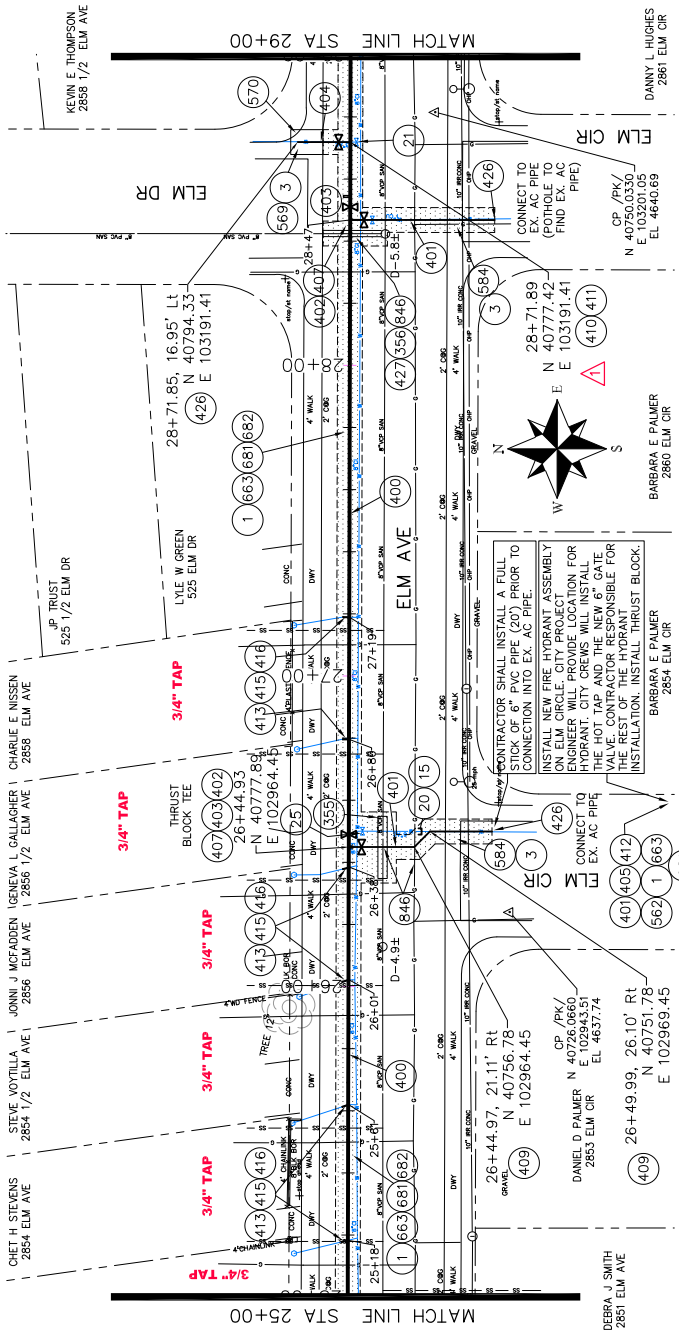
Bid Amount: \$ _____

Bid Amount: _____ dollars

Contractor Name:
Contractor Address:
Contractor Phone #:

CONSTRUCTION NOTES:

- 1) 202 - REMOVAL OF ASPHALT MAT. CUT AND REMOVE ASPHALT AS SHOWN. (FULL DEPTH) (INDICATED BY DOTTED HATCH PATTERN)
- 3) 202 - REMOVAL OF CONCRETE. SAW CUT AND REMOVE. CONCRETE AS SHOWN. (INDICATED BY CROSS HATCH PATTERN) INCLUDES BUT NOT LIMITED TO CURB, GUTTER, SIDEWALK, DRIVEWAY, SLABS, V-PAN, CURB RAMPS, INTERSECTION CORNERS, APRONS, AND LANDSCAPE BORDERS.
- 15) 202 - REMOVAL OF PIPE AS SHOWN. (SIZE AND TYPE AS SHOWN ON PLAN)
- 20) ABANDON PIPE. ABANDON BY PLUGGING REMAINING ENDS WITH CONCRETE.
- 21) 202 - REMOVE EXISTING WATER VALVE.
- 25) 002 - ABANDON EXISTING WATER VALVE. CLOSE VALVE. REMOVE TOP HALF OF EXISTING VALVE. BOX, FILL CAVITY TO FINISHED SUBGRADE WITH FLOW FILL MATERIAL.
- 355) 104.40 - CAP TOP HALF OF SEWER IN CONCRETE PER STD. DETAIL GU-04. (WATER LINE LESS THAN 18" ABOVE SEWER LINE)
- 356) 104.40 - ENCASE ENTIRE SEWER IN REINFORCED CONCRETE PER STD. DETAIL GU-04. (ALL CASES WHERE WATER LINE BELOW SEWER LINE OR AT WATERWAY CROSSING)
- 400) 102.7/108.2 - 8" WATER MAIN PIPE (C-900 PVC) (SDR-18) INCLUDES TYPE A BEDDING AND HAUNCHING MATERIAL AND BACKFILL OF TRENCH WITH NATIVE MATERIALS MEETING 103.16 EARTH BACKFILL MATERIAL.
- 401) 102.7/108.2 - 6" WATER MAIN PIPE (C-900 PVC) (SDR-18) INCLUDES TYPE A BEDDING AND HAUNCHING MATERIAL AND BACKFILL OF TRENCH WITH NATIVE MATERIALS MEETING 103.16 EARTH BACKFILL MATERIAL.
- 402) 102.8b/108.3 - 6" GATE VALVE (M)U
- 403) 102.8b/108.3 - 8" GATE VALVE (M)U
- 404) 102.7/108.2 - 3" WATER MAIN PIPE (CLASS 200 PSI, ASTM D-2241) (INCLUDES COST OF A HMMX COUPLING FOR CONNECTION BETWEEN PLASTIC PIPE AND EX. 3" AC PIPE)
- 405) 6" HOT TAP & 6" GATE VALVE (FURNISHED AND INSTALLED BY THE CITY'S WATER DEPT.) (CONTRACTOR SHALL EXCAVATE AREA FOR HOT TAP AND COORDINATE WORK SCHEDULE WITH THE CITY)
- 407) 102.8/108.3 - 8" x 6" TEE (SWVEL TEE)
- 409) 102.8/108.3 - 6", 45° ELBOW (M)U
- 410) 102.8b/108.3 - 3" GATE VALVE (M)U
- 411) 102.8b/108.3 - 8" x 3" TEE (M)U
- 412) 102.8/108.3 - FIRE HYDRANT ASSEMBLY
- 413) 102.7c/108.4 - WATER SERVICE LINE (TYPE K COPPER) (SIZE AS SHOWN ON PLAN) IF LEAD OR POLY SERVICE LINE IS ENCOUNTERED, WATER SERVICE LINE SHALL BE REPLACED TO METEER.
- 415) 102.8b/108.4 - TAPPING SADDLE (SIZE AS SHOWN ON PLAN)
- 416) 102.8/108.4 - CORPORATION STOP (SIZE AS SHOWN ON PLAN)
- 426) CONNECT TO EXISTING WATER PIPE/VALVE/FITTING. (CONTRACTOR TO VERIFY EXISTING WATER PIPE SHALL INCLUDE THE COST OF CONNECTION TO EXISTING PIPELINE)
- 427) DEFLECT PIPE AS SHOWN



- CONSTRUCTION NOTES (CONT.):
- 562) 608.06 - MONOLITHIC CURB, GUTTER AND SIDEWALK (MATCH IN KIND) (5" WIDE)
 - 569) 608.06 - CONCRETE INTERSECTION CORNER (MATCH IN KIND)
 - 570) 608.06 - DETECTABLE WARNINGS (WET SET)
 - 589) 608.06 - CONCRETE DRAINAGE PAN (MATCH IN KIND) (SEE CITY STANDARD DETAIL C-12)
 - 663) 304 - AGGREGATE BASE COURSE (CLASS 6) (12" THICK)
 - 681) 601.08 - HOT BITUMINOUS PAVEMENT (PATCHING) (2" THICK) (GRADING SX, PG 64-22) (ONE 2" LIFT)
 - 682) 601.08 - HOT BITUMINOUS PAVEMENT (PATCHING) (1-TOP) (2" THICK) (GRADING SX, PG 64-22) (ONE 2" LIFT) (1-TOP WIDTH = 2) (SEE CITY STD. DETAIL GU-03)
 - 846) POTHOLE EXISTING UTILITY AHEAD OF CONSTRUCTION. TRANSITION WATER PIPE AS NEEDED TO MAINTAIN 18" CLEARANCE MINIMUM ABOVE SEWER PIPES AND 6" CLEARANCE MINIMUM ABOVE OR BELOW OTHER UTILITY LINES.

REVISION	DESCRIPTION	DRAWN BY	DATE
REVISION	ADDENDUM #1 - Revised Sheet & A	JCS	2017/2/23
REVISION		DESIGNED BY	DATE
REVISION		ALC	2017
REVISION		APPROVED BY	DATE
REVISION		TPC	2017

SCALES: PLAN & PROFILE: 1" = 40'

CITY OF Grand Junction COLORADO

PUBLIC WORKS ENGINEERING DIVISION

ELM AVE. WATERLINE REPLACEMENT PROJECT
28 1/4 TO 28 3/4 ROAD

8