



Purchasing Division

ADDENDUM NO. 4

DATE: February 16, 2018
FROM: City of Grand Junction Purchasing Division
TO: All Offerors
RE: Las Colonias Business Park Phase I and Phase IA IFB-4476-18-DH

Offerors responding to the above referenced solicitation are hereby instructed that the requirements have been clarified, modified, superseded and supplemented as to this date as hereinafter described.

Please make note of the following clarifications:

1. **Is the seeding shown on the Storm Water Management plan to be included in the bid?**
No, delete the bonded fiber matrix seed note shown on storm water management plan sheet(s).
2. **Special Provision 4** – Spelling correction in SP - 4, material shall be screened not screed.
3. **Since the Contractor may be handling mill tailings will there be a line item for this on the schedule of values?** No, if by chance mill tailings are encountered the Contractor shall stockpile contaminated material in a designate area located on site.
4. **Will there be a revised bid schedule in the next addendum? Addendum No. 2 did not have one included.** See Addendum No. 3.
5. **Is the project still bidding on February 21, 2018 at 3:30 PM?** Yes
6. **Do you have a copy of the plan holders list? Could you please send me a copy of it?** The City does not keep plan holders list, as we utilize the Rocky Mountain E-Purchasing System. However, we do post the Pre-Bid Meeting Sign In Sheet on our website at <http://www.gjcity.org/business-and-economic-development/bids/>
7. **Do you have any addenda released for the project? Can you also send me a copy of it, please?** All City of Grand Junction solicitation documents, including addendums, drawings, scope, specifications, pre-bid meeting sign in sheets, etc., can be found on our website at <http://www.gjcity.org/business-and-economic-development/bids/>
8. **The solicitation and bid schedule for this project's phases are combined, so can work scopes be performed on both phases concurrently, or does Phase 1/1A have to have any portion or all work completed prior to starting on the next phase?** All work is proposed to be performed concurrently. The Contractor shall consider Phase I/IA as one contiguous project.

9. **During the mandatory pre-bid meeting, there was a request for an existing earthwork contour file, is there still going to be a CAD file made available for bidding take-off purposes?** Existing contour maps were requested to be released at the prebid meeting. These maps can be found in Addendum No. 3. There will be no CAD file made available for take-offs.
10. **During the mandatory pre-bid meeting, it was mentioned that Huddleston-Berry is going to be contracted by The City of GJ for this project, what responsibility does that leave the bidding GC with for item 84-Geotech?** See Addendum No. 3 for clarification.
11. **If uranium mill tailings/contaminated materials are encountered on this project, does the bidding GC need to have contingent cost in their bid for haul-off and disposal in any particular item? Or will this work be handled through change order/minor contract revisions?** Refer to Addendum No. 4, Question #3.
12. **On the addendum item #19, 1- 6"x6" tee was added but I don't see it on the new plans, can you tell me where this is so I know what connections it needs?** Refer to the Las Colonias Business Park Phase I Improvement Plan Set, Sheet 10 (6" Raw Water Line).
13. **6" Raw Water Line Appurtenances** – The lineal foot cost for installation of the 6" C-900 raw water line shall include appurtenances shown on attached Valve Location Plan Sheets 1 and 1a.
 - 3"x 6" Schedule 40 Tee or Harco Saddle – 18 EA.
 - 3" CL 200 PVC Riser (approx. 2' ea.) – +/- 36 LF.
 - 3" PVC Cap – 18 EA.
 - 10" Dia. Valve Box – 18 EA.
 - Maxicom Irr. Control Wire – 3,472 LF.

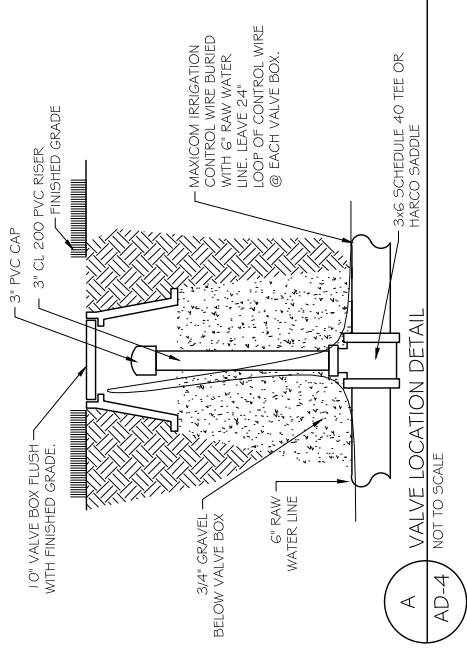
The original solicitation for the project noted above is amended as noted.

All other conditions of subject remain the same.

Respectfully,

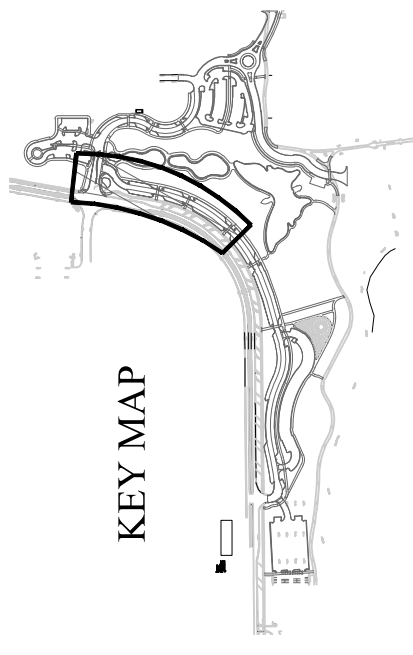
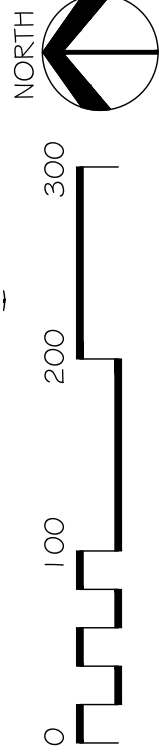
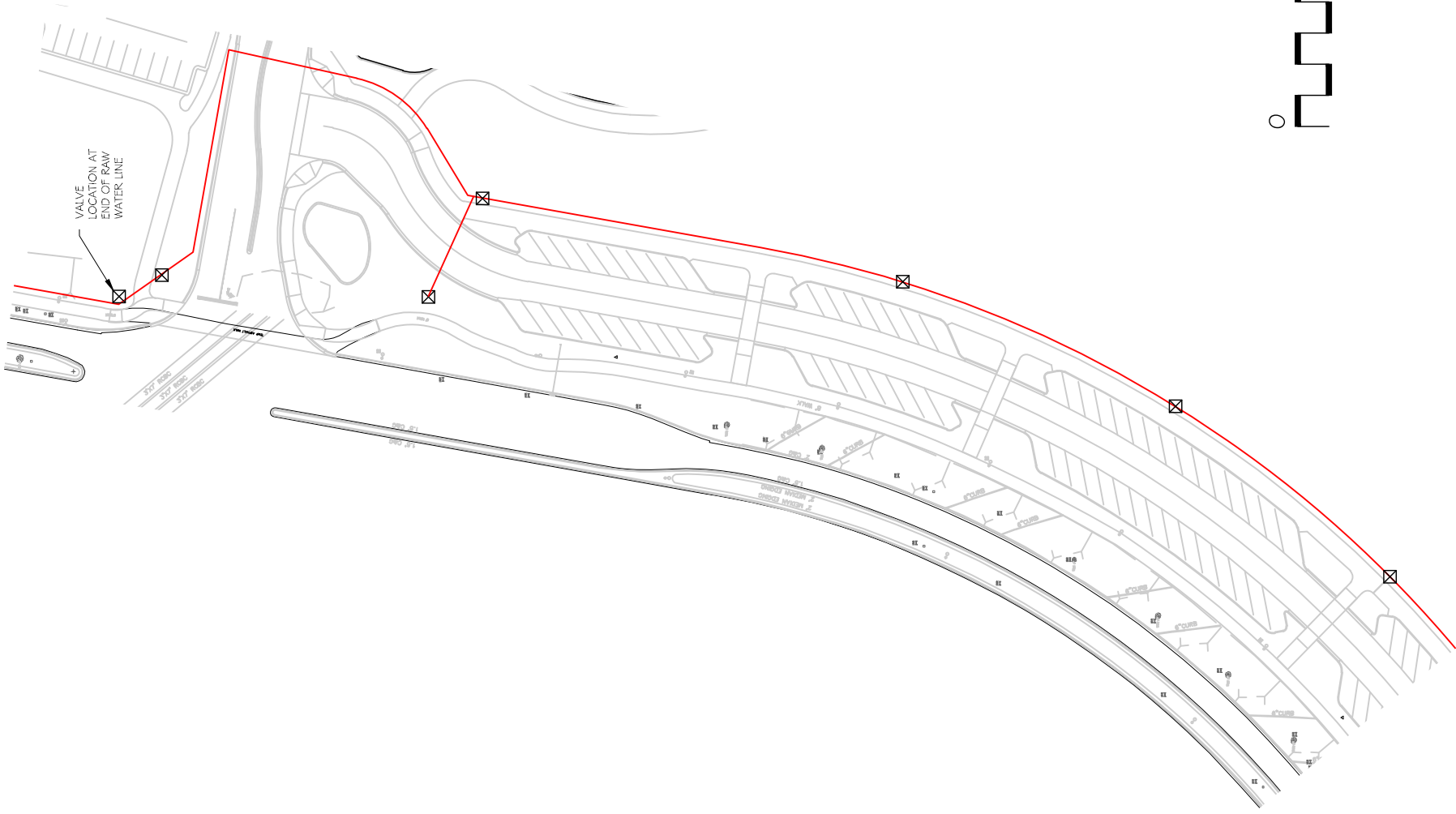


Duane Hoff Jr., Senior Buyer
City of Grand Junction, Colorado



LEGEND

- ☒ VALVE LOCATION
- 6" RAW WATER LINE



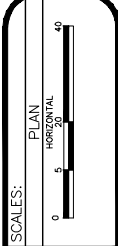
CLAVONNE ROBERTS & ASSOCIATES, INC.
LAND PLANNING AND
LANDSCAPE ARCHITECTURE



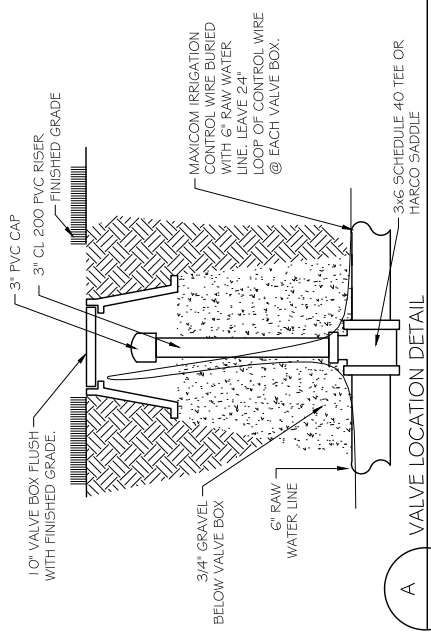
PUBLIC WORKS
ENGINEERING DIVISION

LAS COLONIAS BUSINESS PARK
PHASE 1
Addenda 4 Valve Location Plan

REVISION	DESCRIPTION	DATE	DRAWN BY	CR	DATE	2018
REVISION			DESIGNED BY	CR	DATE	2018
REVISION			CHECKED BY	MH	DATE	2018
REVISION			APPROVED BY	ZZ	DATE	2018



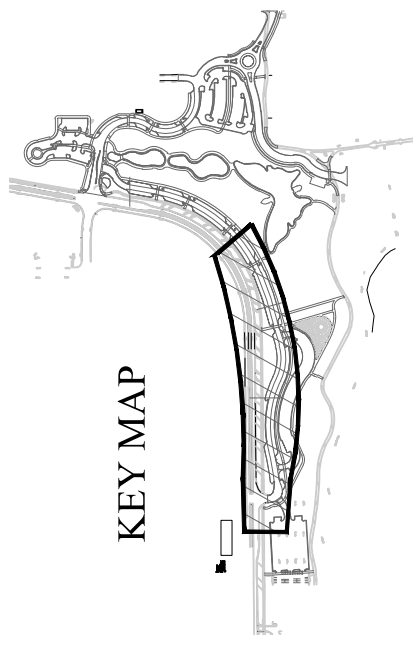
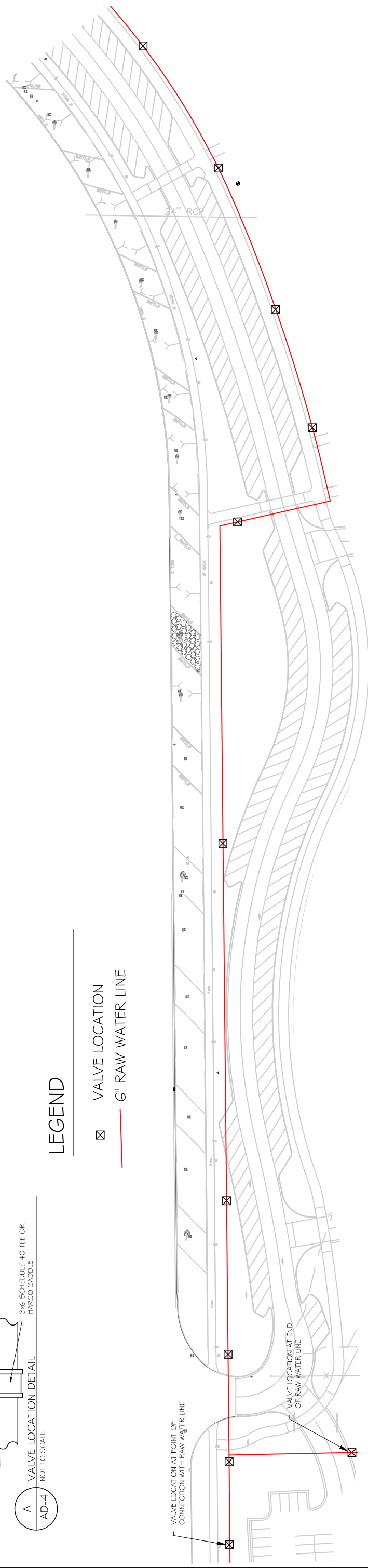
AD4
1



A
AD-4
NOT TO SCALE

LEGEND

- ☒ VALVE LOCATION
- 6" RAW WATER LINE



KEY MAP

CLAVONNE ROBERTS & ASSOCIATES, INC.
LAND PLANNING AND
LANDSCAPE ARCHITECTURE

REVISION	DESCRIPTION	DATE	DRAWN BY	CR	DATE	2018
REVISION			DESIGNED BY	CR	DATE	2018
REVISION			CHECKED BY	MH	DATE	2018
REVISION			APPROVED BY	ZZ	DATE	2018



PUBLIC WORKS
ENGINEERING DIVISION

LAS COLONIAS BUSINESS PARK
PHASE 1A
Addenda 4 Valve Location Plan

AD4
1a