



Purchasing Division

ADDENDUM NO. 4

DATE: April 27, 2018
FROM: City of Grand Junction Purchasing Division
TO: All Offerors
RE: 2018 7th Street Reconstruction – North Ave. to Orchard Ave. IFB-4513-18-DH

Offerors responding to the above referenced solicitation are hereby instructed that the requirements have been clarified, modified, superseded and supplemented as to this date as hereinafter described.

Please make note of the following clarifications:

1. Q: Could you provide elevations for the manholes and some detail on the inlets?

A: Please see the attached revised plans. Please also note that the storm sewer laterals have been reduced to a 12" diameter as well.

2. Q: Can we get the elevations for the 4" connections on the Addendum 3 Storm Sewer?

A: The 4" connections indicated in the quantities are for potential sanitary service adjustments that may be necessary for the placement of the new storm sewer. These quantities are provided as a contingency in case the situation arises.

3. Q: Our company has already procured the bid bond for this project with the bid stated as 4/27/18 per addendum 2. Will the city accept the bid bond with the bid date listed, or will they require a new bid bond be procured with the new bid date as listed in Addendum 3.

A: Provided your bond company has no issues with the adjusted date, this will be acceptable to the City. Be advised that the bid quantities have changed, which would likely adjust the overall bid cost and should be reflected in the bid bond amount as well.

4. Contractor's shall utilize the attached, revised/updated Price Bid Schedule when submitting their bid responses.

The original solicitation for the project noted above is amended as noted.

All other conditions of subject remain the same.

Respectfully,

A handwritten signature in black ink, appearing to read "Duane Hoff Jr.", written over a white background.

Duane Hoff Jr., Senior Buyer
City of Grand Junction, Colorado

Bid Schedule: ADDENDUM 4 - 2018 7th Street Reconstruction - North Ave. to Orchard Ave.

Contractor: _____

Item No.	CDOT, City Ref.	Description	Quantity	Units	Unit Price	Total Price
1	108.2	12" Storm Drain Pipe (SDR 35 or approved equal)	30.	LF	\$ _____	\$ _____
2	108.2	18" Storm Drain Pipe (SDR 35 or approved equal)	1,370.	LF	\$ _____	\$ _____
3	108.2	4" Sanitary Sewer Pipe (SDR-35 PVC) Price to Include connections to	150.	LF	\$ _____	\$ _____
4	108.5	Storm Sewer Basic Manhole (48" I.D.)	4.	EA	\$ _____	\$ _____
5	108.6	Single Storm Drain Inlet (Vertical Curb)	2.	EA	\$ _____	\$ _____
6	202	Asphalt Removal (Planing)(Thickness Varies - Maximum 12")	16,930.	SY	\$ _____	\$ _____
7	202	Removal of Fence (6' Height Chain Link)	32.	LF	\$ _____	\$ _____
8	202	Removal of Fence (6' Height Wooden Picket - 6" wide picket)	24.	LF	\$ _____	\$ _____
9	203	Excavation and Embankment (Potholing) (See SP-6)	Lump Sum		---	\$ _____
10	203	Excavation and Embankment (Unclassified Excavation)	7,843.	CY	\$ _____	\$ _____
11	208	Erosion Control (Complete-In-Place)	Lump Sum		---	\$ _____
12	209	Dust Abatement	77.	Days	\$ _____	\$ _____
13	210	Adjust Valve Box (water)	23.	EA	\$ _____	\$ _____
14	210	Adjust Valve Box (Reference and Reset Survey Monuments)	6.	EA	\$ _____	\$ _____
15	210	Adjust Manhole Ring and Cover (Sanitary and Storm Sewer)	17.	EA	\$ _____	\$ _____
16	210	Adjust Manhole Ring and Cover (Others)	2.	EA	\$ _____	\$ _____
17	210	Reset Fence (6' Height Chain Link)	32.	LF	\$ _____	\$ _____
18	210	Reset Fence (6' Height Wood Picket - 6" wide picket)	24.	LF	\$ _____	\$ _____
19	304	Aggregate Base Course (Class 6) - 15" Pavement Section	13,055.	Tons	\$ _____	\$ _____
20	304	Aggregate Base Course (Class 3) - 18" Subgrade Stabilization	4,375.	Tons	\$ _____	\$ _____
21	306	Reconditioning (12")	16,930.	SY	\$ _____	\$ _____
22	401	Hot Mix Asphalt (5" thick) (Grading SX, Binder Grade 64-22)	4,705.	Tons	\$ _____	\$ _____
23	401	Hot Mix Asphalt (2" thick) (Grading SX, Binder Grade 76-28)	1,884.	Tons	\$ _____	\$ _____
24	420	Geosynthetics - Mirafi RS580i or equivalent	4,530.	SY	\$ _____	\$ _____
25	608/304	Concrete Curb and Gutter (2' Wide) To Include 6" of Class 6 Aggregate Base Course	50.	LF	\$ _____	\$ _____

Bid Schedule: ADDENDUM 4 - 2018 7th Street Reconstruction - North Ave. to Orchard Ave.

Contractor: _____

Item No.	CDOT, City Ref.	Description	Quantity	Units	Unit Price	Total Price
26	608/304	Concrete Sidewalk (4" Thick) to Include 6" of Class 6 Aggregate Base Course	30.	SY	\$ _____	\$ _____
27	608/304	Concrete Drive way Section (6"Thick) to Include 6" of Class 6 Aggregate Base Course	570.	SY	\$ _____	\$ _____
28	620	Sanitary Facility		Lump Sum	---	\$ _____
29	625	Construction Surveying		Lump Sum	---	\$ _____
30	626	Mobilization		Lump Sum	---	\$ _____
31	627-30405	Preformed Thermoplastic Pavement Marking (Word/Symbol)	373.	SF	\$ _____	\$ _____
32	627-30410	Preformed Thermoplastic Pavement Marking (X-Walk/Stopline)	976.	SF	\$ _____	\$ _____
33	630	Traffic Control (Complete In Place)		Lump Sum	---	\$ _____
34	630	Flagging	720.	HR	\$ _____	\$ _____
35	630	Traffic Control Plan		Lump Sum	---	\$ _____
INC		Incentive HMA 64-22	---	---	---	\$ 15,000.00
INC		Incentive HMA 76-28	---	---	---	\$ 10,000.00
MCR		Minor Contract Revisions	---	---	---	\$ 100,000.00
					Bid Amount:	\$ _____

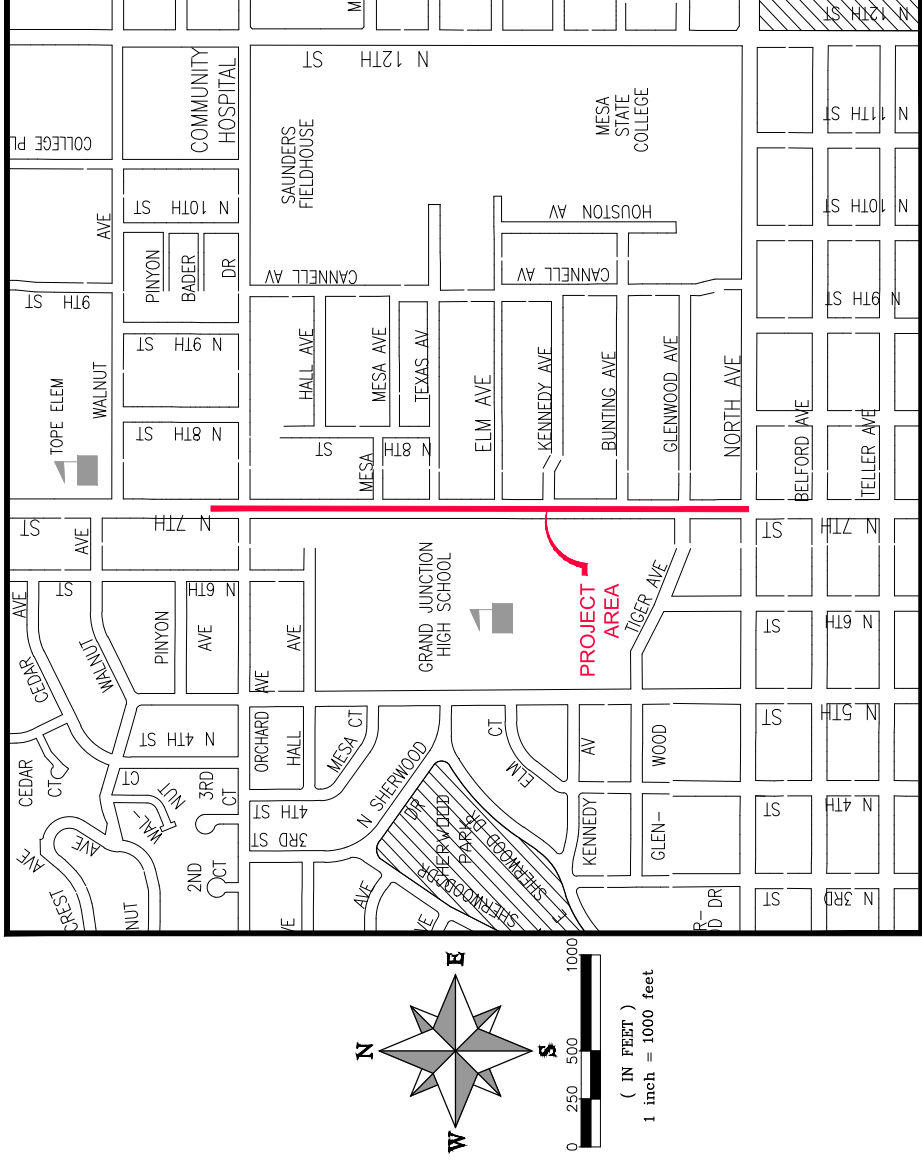
Bid Amount:

_____ **dollars**

7TH STREET RECONSTRUCTION MARCH, 2018

- 1 _____ Cover Sheet
- 2 _____ Standard Abbreviations, Legend, and Symbols
- 3 _____ Plan View Sta 0+00 - Sta 15+00
- 4 _____ Plan View Sta 15+00 - Sta 28+00
- 5 _____ Profile View Storm Sewer
- 6 _____ Section Views Sta 0+50 - Sta 7+50
- 7 _____ Section Views Sta 8+00 - Sta 15+00
- 8 _____ Section Views Sta 15+50 - Sta 22+50
- 9 _____ Section Views Sta 23+00 - Sta 27+00 & Typical Section Detail
- 10 _____ Storm Sewer Details

VICINITY MAP



UTILITIES AND AGENCIES							
AGENCY	NAME	POSITION	ROLE	MAILING ADDRESS	STREET ADDRESS	CITY, STATE	VOICE-WK FAX
CITY OF GRAND JUNCTION	ERIC MOCKO	PROJECT ENGINEER	PROJECT ENGINEER	333 WEST AVE BLDG C	333 WEST AVE BLDG C	GRAND JCT., CO 81501	(970) 256-4017 (970) 256-4022
	LEE COOPER	PROJECT ENGINEER	SANITARY SEWER	333 WEST AVE BLDG C	333 WEST AVE BLDG C	GRAND JCT., CO 81501	(970) 256-4155 (970) 256-4022
GRAND VALLEY IRRIGATION CO.	PHIL BERTRAND	MANAGER	IRRIGATION	688 26 RD	688 26 RD	GRAND JCT., CO 81506	(970) 242-2762
	JEFF VALDEZ	MANAGER	CABLE TV	2502 FORESIGHT CIRCLE	2502 FORESIGHT CIRCLE	GRAND JCT., CO 81504	(970) 245-8750 (970) 245-6803
CENTURYLINK	CHRIS JOHNSON	ENGINEER	TELEPHONE	2524 BLICHMANN AVE	2524 BLICHMANN AVE	GRAND JCT., CO 81504	(970) 244-4311 (970) 240-4349
	STEVE PIBURN	UNIT MANAGER	ELECTRIC	2538 BLICHMANN AVE	2538 BLICHMANN AVE	GRAND JCT., CO 81506	(970) 244-2664 (970) 244-2664
XCEL	SARAH BARRICAU	UNIT MANAGER	GAS	2538 BLICHMANN AVE	2538 BLICHMANN AVE	GRAND JCT., CO 81506	(970) 244-2656 (970) 244-2656



*Public Works
Engineering Division*



Know what's below.
Call before you dig.

NOTE: NOTIFY AFFECTED UTILITY VENDOR 48 HOURS PRIOR TO EXCAVATIONS THAT WILL EXPOSE UTILITY LINES. THE COVER SHEET WILL HAVE A LISTING OF UTILITY VENDORS AND TELEPHONE NUMBERS.

REVISION	DESCRIPTION	DATE

DRAWING STATUS:	<input type="radio"/> PROGRESS	<input type="radio"/> FINAL CONSTRUCTION DRAWINGS
DESIGNED BY:	ERIC MOCKO	
REVIEWED BY:	Trent C. Prall, Public Works Director	
AUTHORIZED FOR CONSTRUCTION	Trent C. Prall, Public Works Director	
ACCEPTED AS CONSTRUCTED	Trent C. Prall, Public Works Director	

PROJECT NO. _____

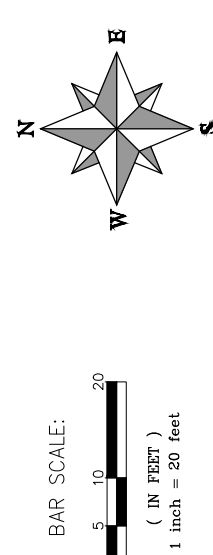
ABBREVIATIONS	DESCRIPTION	DATE	DRAWN BY	DATE
AASHTO	AMERICAN ASSOCIATION OF STATE HIGHWAY & TRANSPORTATION OFFICIALS			
ABC	AGGREGATE BASE COURSE			
AC	ASBESTOS CEMENT			
AP	ANGLE POINT			
ASB	ANCHORED STRAW BALES			
ASTM	AMERICAN SOCIETY FOR TESTING MATERIALS			
AWWA	AMERICAN WATER WORKS ASSOCIATION			
BC	BACK OF CURB			
BF	BUTTERFLY VALVE			
BOW	BACK OF WALK			
BCR	BEGIN CURB RETURN			
BOT	BOTTOM			
BSWMP	BOTTOM STORM WATER MANAGEMENT PRACTICES			
CC	CORRUGATED ALUMINUM PIPE			
CADOT	COLORADO DEPARTMENT OF TRANSPORTATION			
CAI	CAST IRON			
C.C.& SW	CURB, GUTTER & SIDEWALK			
C	CENTER LINE			
CLIP	CORRUGATED METAL PIPE			
CO	CLEAN OUT			
COMB	COMBINATION (AS IN STORM SEWER AND SANITARY SEWER)			
CONC	CONCRETE			
CSM	CITY SURVEY MONUMENT			
CSP	CORRUGATED STEEL PIPE			
CU	COPPER			
DI	DUCTILE IRON			
LWY	DRIVEWAY			
EG	END CURB RETURN			
EG	EDGE OF GUTTER			
EL	ELEVATION			
EP	EXISTING			
EX	EXISTING			
FB	FULL BODY			
FC	FACE OF CURB			
F	FLOW LINE			
FL	FLOW LINE GRADE			
FM	FORCE MAIN			
FO	FIBER OPTICS			
FS	FAR SIDE			
FTG	FOOTING			
G	GAS			
GB	GAS BREAK			
GW	GAS METER			
GW	GATE VALVE			
HBP	HOT BITUMINOUS PAVEMENT			
HDPE	HIGH DENSITY POLYETHYLENE			
INV	INVERT			
IRR	IRRIGATION			
L	LENGTH OF ARC			
LC	LONG CHORD			
LL	LONG ARCT			
LS	LONG ARC			
LT	LEFT			
MB	MAILBOX			
MCSM	MESA COUNTY SURVEY MONUMENT			
MH	MANHOLE			
MJ	MECHANICAL JOINT			
N/A	NOT APPLICABLE			
N/A	NOT IN CONTRACT			
NIC	NOT IN CONTRACT			
NOP	NO ONE PERSON			
NRCP	NON-REINFORCED CONCRETE PIPE			
NS	NEAR SIDE			
NTS	NOT TO SCALE			
OHP	OVERHEAD POWER			
OHT	OVERHEAD TELEPHONE			
PO	POINT OF INTERSECTION			
POC	POINT OF COMPOUND CURVATURE			
PE	POLYETHYLENE			
PERF	PERFORATED			
PI	POINT OF INTERSECTION			
PIP	PLASTIC IRRIGATION PIPE			
POC	POINT ON CURVE			
POT	POINT ON TANGENT			
PRC	POINT OF REVERSE CURVATURE			
PT	POINT OF TANGENCY			
PVC	POLYVINYL CHLORIDE			
R	RADIUS			
RC	REINFORCED CONCRETE PIPE			
REQ'D	REQUIRED			
RG	RESTRAINED GLANDS			
RJ	ROUND JOINT			
ROW	RIGHT OF WAY			
RP	RAIL ROAD			
RR	RAIL ROAD			
RS	SHORT RADIUS			
RT	RIGHT			
S	SLOPE			
SAN	SANITARY			
SC	SHORT CHORD			
SCD	SCHEDULE CONTRACT DOCUMENTS			
SCH	SCHEDULE			
SF	SILT FENCE			
SL	SECTION LINE			
SSRB	STANDARD SPECIFICATIONS FOR ROAD & BRIDGE CONSTRUCTION			
SSUU	STANDARD SPECIFICATIONS FOR CONSTRUCTION OF UNDERGROUND UTILITIES			
STA	STATION			
STA	STATION			
STL	STEEL			
TM	TELEPHONE			
TAN	LENGTH OF TANGENT			
TC	TOP OF CURB			
TH	TEST HOLE			
TV	TELEVISION			
(TYP)	TYPICAL			
UU	UNDERGROUND UTILITIES			
V	VERTICAL CURVE			
VPC	VERTICAL POINT OF CURVATURE			
VPC	VERTICAL POINT OF COMPOUND CURVATURE			
VFCC	VERTICAL POINT OF REVERSE CURVATURE			
VPRC	VERTICAL POINT OF REVERSE CURVATURE			
VPI	VERTICAL POINT OF INTERSECTION			
VPT	VERTICAL POINT OF TANGENCY			
W	WATER			
Δ	DELTA ANGLE			

LEGEND	SCALES: PLAN & PROFILE
BSWMP	HORIZONTAL: 1" =
DRAINAGE BASIN BOUNDARY	VERTICAL: 1" =
ASB	
ANCHORED STRAW BALES	
BSWMP	
ANCHORED STEEL PIPE	
AMERICAN WATER WORKS ASSOCIATION	
BACK OF CURB	
BUTTERFLY VALVE	
BUILDING	
CONCRETE CURB AND GUTTER	
CONCRETE CURB, GUTTER, & SIDEWALK	
CONCRETE DITCH	
CONCRETE SIDEWALK	
CULVERT	
EARTH DITCH	
EDGE OF GRAVEL	
EDGE OF PAVEMENT	
FENCE (BARBED WIRE)	
FENCE (CHAIN LINK)	
FENCE (IRON)	
FENCE (PLASTIC)	
FENCE (TEMPORARY CONSTRUCTION)	
FENCE (WOOD)	
FENCE (WOVEN WIRE)	
GUARD RAIL	
HATCHING: ASPHALT REMOVAL	
HATCHING: CONCRETE REMOVAL	
HATCHING: STAGING AREA	
LINE (CENTER OF IMPROVEMENTS)	
LINE (CITY LIMITS)	
LINE (CONTROL)	
LINE (EASEMENT)	
LINE (MONUMENT/SECTION)	
LINE (PROPERTY)	
LINE (RIGHT OF WAY)	
MATCH LINE	SEE SHEET NO. ?
PIPE (IRRIGATION)	
PIPE (SIPHON)	

SYMBOLS	SYMBOLS
BENCH MARK	PROPOSED CONCRETE CURB AND GUTTER
CATCH BASIN	PROPOSED CONCRETE CURB, GUTTER, & SIDEWALK
CLEAN OUT	PROPOSED CONCRETE SIDEWALK
CURB STOP	PROPOSED "WET" UTILITIES (CONSTRUCTION NOTE WILL INDICATE TYPE, SIZE, AND MATERIAL OF NEW MAIN)
FIRE HYDRANT	ALL PROPOSED FEATURES NOT SHOWN IN LEGEND WILL BE SHOWN THE SAME AS THEIR EXISTING COUNTERPART, BUT INDICATED BY BOLDER LINETYPE
GUY WIRE ANCHOR	RAIL ROAD
HEADGATE	RETAINING WALL
IRRIGATION PUMP	STRIPING (CONTINUOUS WHITE)
MAILBOX	STRIPING (DASHED WHITE)
MANHOLE (ELECTRIC)	STRIPING (CONTINUOUS YELLOW)
MANHOLE (GAS)	STRIPING (DASHED YELLOW)
MANHOLE (SANITARY/STORM)	TOP OF SLOPE
MANHOLE (TELEPHONE)	CONTOUR LINES (SHOWN BETWEEN TOP & TOE)
MANHOLE (TV)	TOE OF SLOPE
MANHOLE (WATER)	TRAFFIC DETECTOR LOOP
METER (GAS)	UTILITY LINE (ABANDON) (THIS CASE A WATER LINE)
METER (WATER)	UTILITY LINE (CABLE TV)
PEDESTAL (TELEPHONE)	UTILITY LINE (ELECTRIC)
PEDESTAL (TV)	UTILITY LINE (FIBER OPTIC)
PROPERTY PIN	UTILITY LINE (GAS)
PULL BOX	UTILITY LINE (HIGH VOLTAGE OVERHEAD POWER)
REDUCER FITTING	UTILITY LINE (OVERHEAD POWER)
SIGN OR POST (SIGN TYPE NOTED)	UTILITY LINE (OVERHEAD TELEPHONE)
SPRINKLER HEAD	UTILITY LINE (SANITARY SEWER)
STREET LIGHT	UTILITY LINE (SANITARY SEWER FORCE MAIN)
SURVEY MONUMENT (CITY)	UTILITY LINE (SANITARY SEWER SERVICE)
SURVEY MONUMENT (TYPE NOTED)	UTILITY LINE (STORM SEWER)
TEST HOLE	UTILITY LINE (STORM SEWER, PERFORATED)
TRAFFIC PAINT MARKING	UTILITY LINE (STORM/SANITARY SEWER SEWER COMBINATION)
TRAFFIC SIGNAL POLE AND MAST ARM	UTILITY LINE (TELEPHONE)
UTILITY POLE	UTILITY LINE (WATER)
VALVE (GAS)	
VALVE (IRRIGATION)	
VALVE (WATER)	
VEGETATION (HEDGE OR BUSH)	
VEGETATION (TREE STUMP)	
VEGETATION (TREE) (CALIPER SIZE NOTED)	
WATER HYDRANT	
WEIR	
YARD LIGHT	

PROJECT NO. _____

NORTH ARROW:



BAR SCALE:
0 5 10 20
(IN FEET)
1 inch = 20 feet

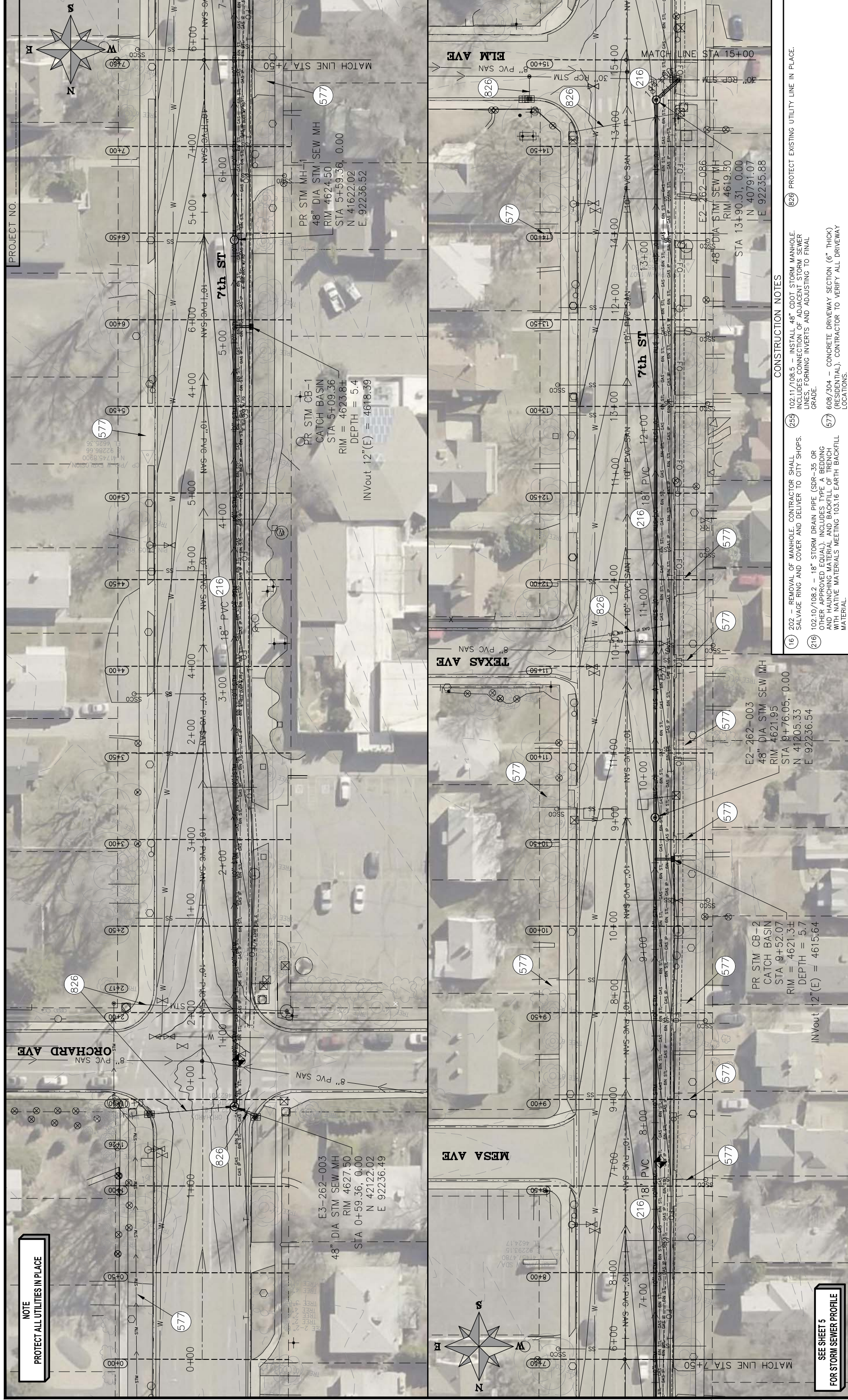
REVISION Δ	DATE	DRAWN BY	DATE
REVISION Δ	DATE	DESIGNED BY	DATE
REVISION Δ	DATE	CHECKED BY	DATE
REVISION Δ	DATE	APPROVED BY JCS	DATE 4-02

CITY OF
Grand Junction
COLORADO

PUBLIC WORKS
ENGINEERING DIVISION

CITY OF GRAND JUNCTION
STANDARD ABBREVIATIONS, LEGEND,
AND SYMBOLS

2



NOTE
PROTECT ALL UTILITIES IN PLACE

SEE SHEET 5
FOR STORM SEWER PROFILE

- CONSTRUCTION NOTES**
- (16) 202 - REMOVAL OF MANHOLE. CONTRACTOR SHALL SALVAGE RING AND COVER AND DELIVER TO CITY SHOPS.
 - (216) 10210/108.2 - 18" STORM DRAIN PIPE (SDR-35 OR OTHER APPROVED EQUAL). INCLUDES TYPE A BEDDING AND HAUNCHING MATERIAL AND BACKFILL OF TRENCH WITH NATIVE MATERIALS MEETING 103.16 EARTH BACKFILL MATERIAL.
 - (255) 10211/108.5 - INSTALL 48" CDOT STORM MANHOLE. INCLUDES CONNECTION OF ADJACENT STORM SEWER LINES. FORMING INVERTS AND ADJUSTING TO FINAL GRADE.
 - (826) 608/304 - CONCRETE DRIVEWAY SECTION (6" THICK (RESIDENTIAL)). CONTRACTOR TO VERIFY ALL DRIVEWAY LOCATIONS.
 - (826) PROTECT EXISTING UTILITY LINE IN PLACE.

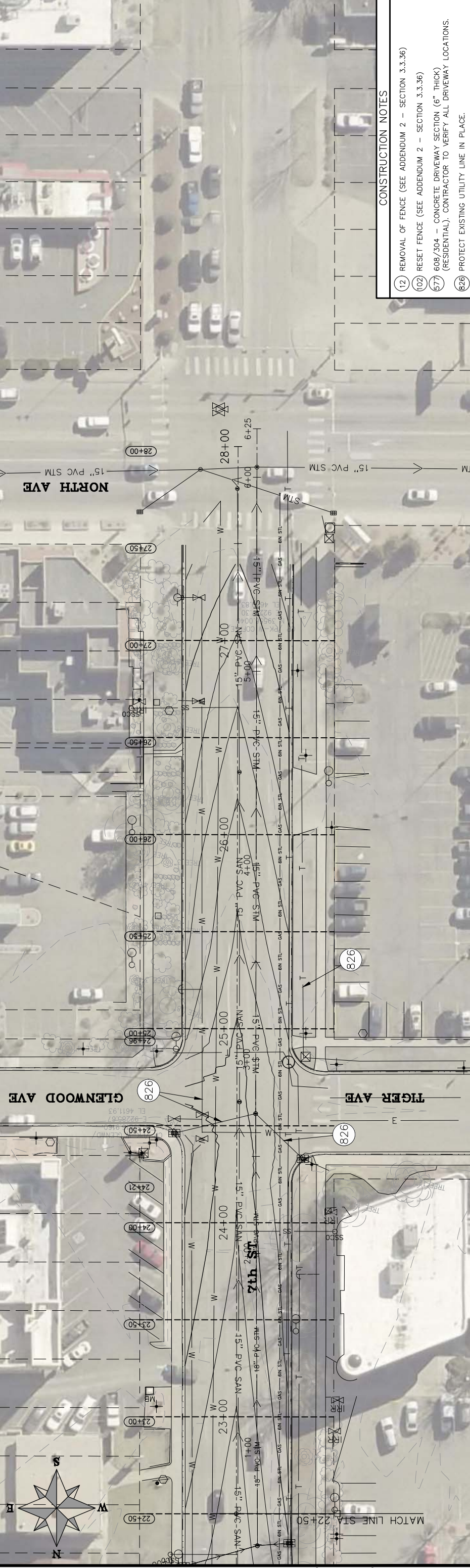
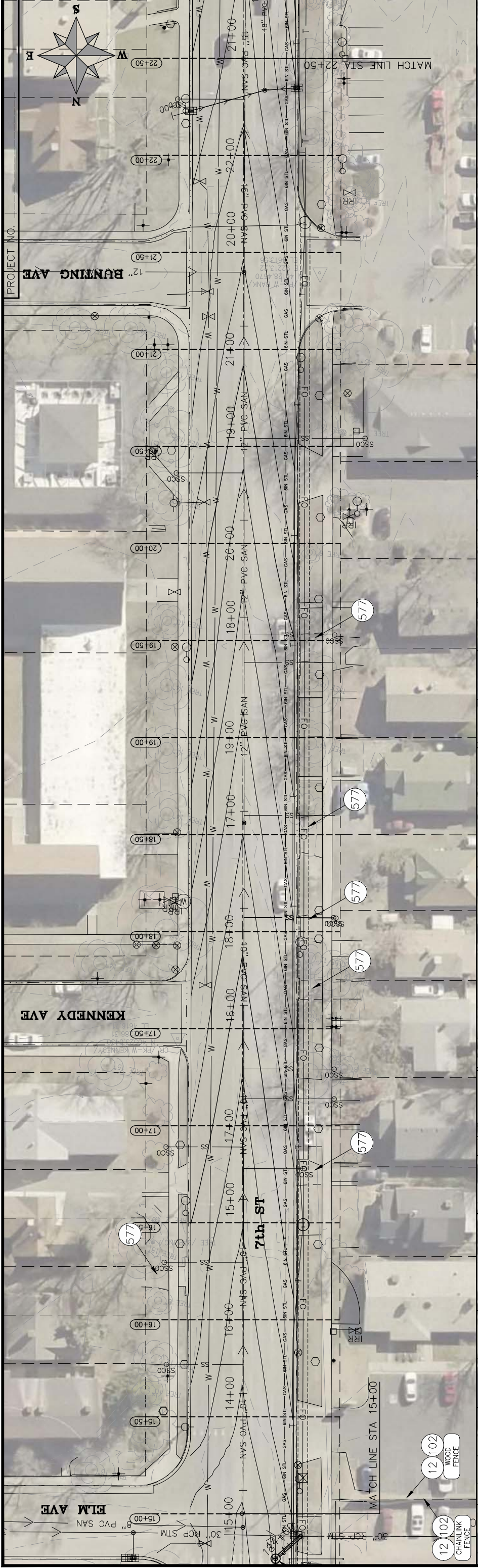
REVISION	DATE	DRAWN BY	DATE	DESCRIPTION
REVISION	DATE	DESIGNED BY	DATE	
REVISION	DATE	CHECKED BY	DATE	
REVISION	DATE	APPROVED BY	DATE	



PUBLIC WORKS
ENGINEERING DIVISION

7TH STREET RECONSTRUCTION
STA 0+00 - STA 15+00

\\landproj\2018 7th Street Reconstruction\dwg\7th Reconstr.dwg_03_4/26/2018 2:03:44 PM



- CONSTRUCTION NOTES**
- 12 REMOVAL OF FENCE (SEE APPENDUM 2 - SECTION 3.3.36)
 - 102 RESET FENCE (SEE APPENDUM 2 - SECTION 3.3.36)
 - 577 608/304 - CONCRETE DRIVEWAY SECTION (6" THICK (RESIDENTIAL). CONTRACTOR TO VERIFY ALL DRIVEWAY LOCATIONS.
 - 826 PROTECT EXISTING UTILITY LINE IN PLACE.

REVISION	DATE	DESCRIPTION	DATE	APPROVED BY
REVISION	DATE	DESCRIPTION	DATE	APPROVED BY
REVISION	DATE	DESCRIPTION	DATE	APPROVED BY
REVISION	DATE	DESCRIPTION	DATE	APPROVED BY

DRAWN BY _____ DATE _____
 DESIGNED BY _____ DATE _____
 CHECKED BY _____ DATE _____
 APPROVED BY _____ DATE _____

SCALES: PLAN & PROFILE
 HORIZONTAL: 1" = 50'
 12.5' 25'
 VERTICAL: 1" = _____

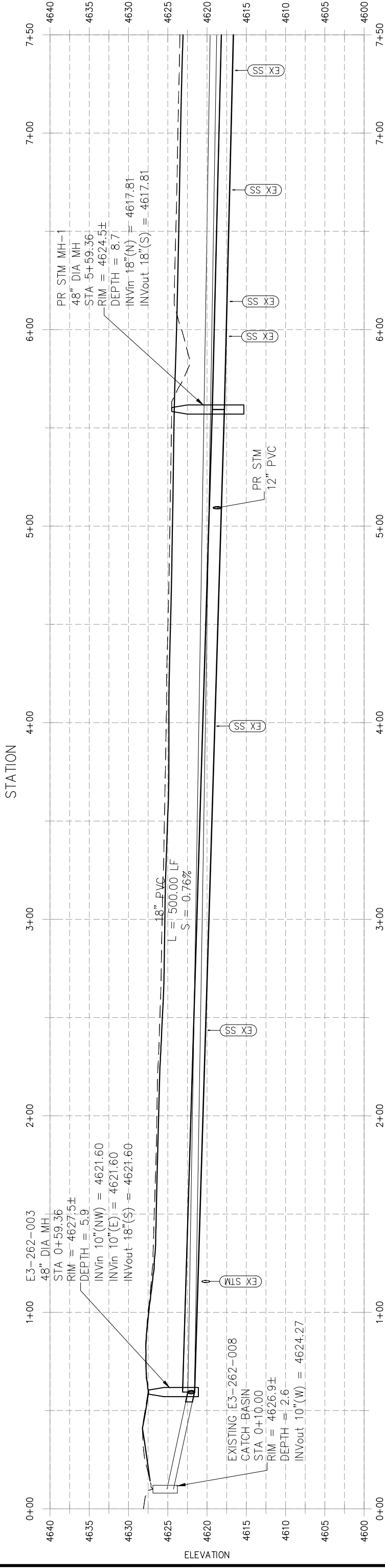
Grand Junction
 COLORADO

CITY OF
PUBLIC WORKS
ENGINEERING DIVISION

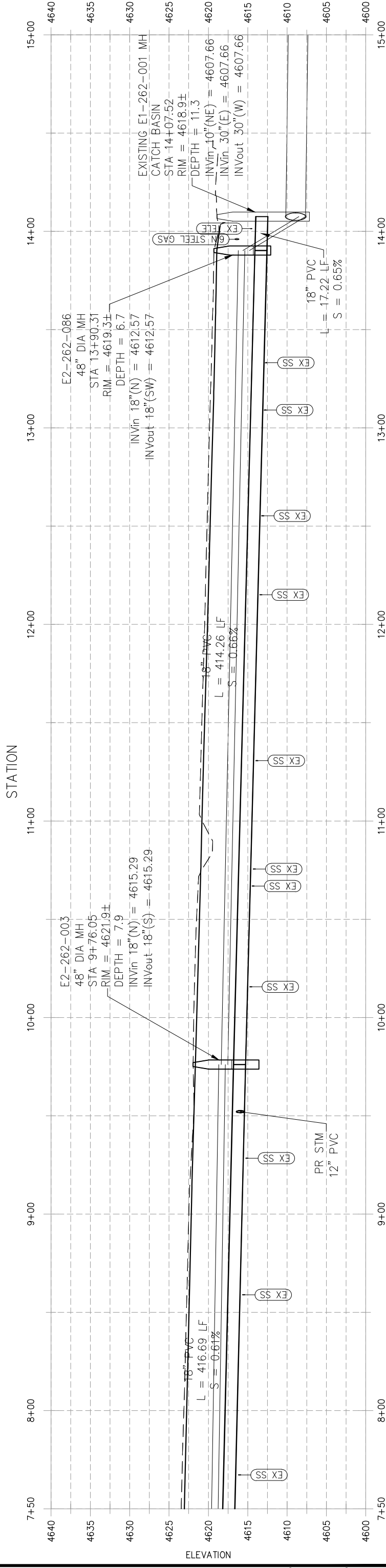
7TH STREET RECONSTRUCTION
 STA 0+00 - STA 28+00

4

PROJECT NO.



STORM SEWER from 0+00.00 to 7+50.00
VERT EXAGGERATION: 4.00



STORM SEWER from 7+50.00 to 15+00.00
VERT EXAGGERATION: 4.00

REVISION	DESCRIPTION	DATE	DRAWN BY	DATE
50				
25				
1				

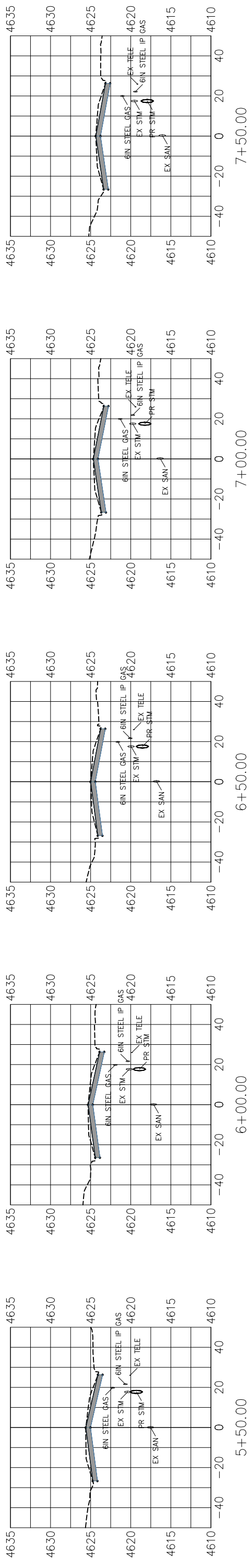
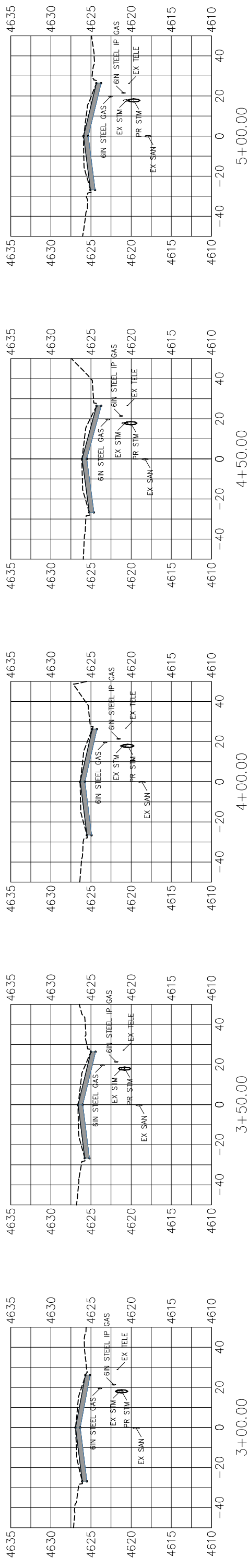
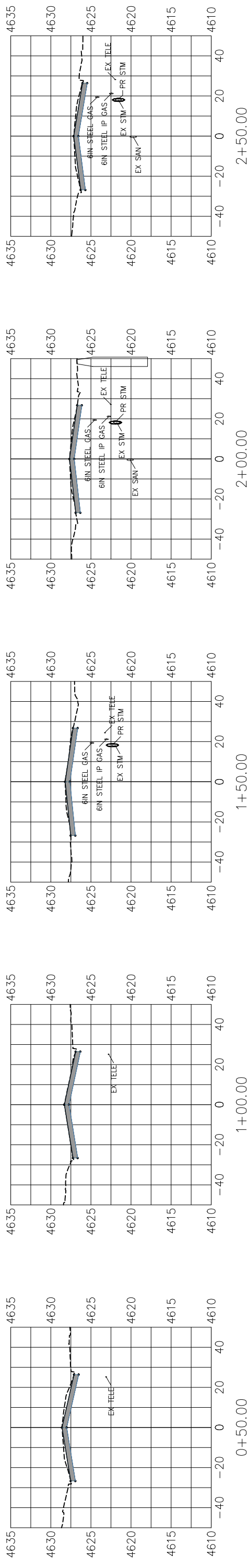


PUBLIC WORKS
ENGINEERING DIVISION

7TH STREET RECONSTRUCTION
STORM SEWER PROFILE
STA 0+00 - STA 15+00

N:\landproj\2018 7th Street Reconstruction\dwg\7th Reconstr.dwg, 05/4/26/2018 2:41:15 PM

PROJECT NO.



REVISION	DESCRIPTION	DATE	DRAWN BY	DATE

DATE	DESIGNED BY
DATE	CHECKED BY
DATE	APPROVED BY

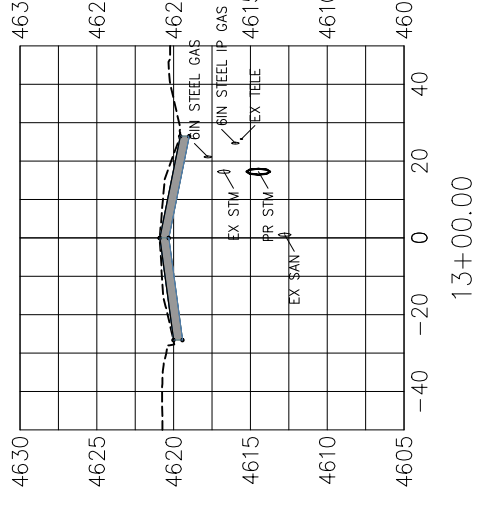
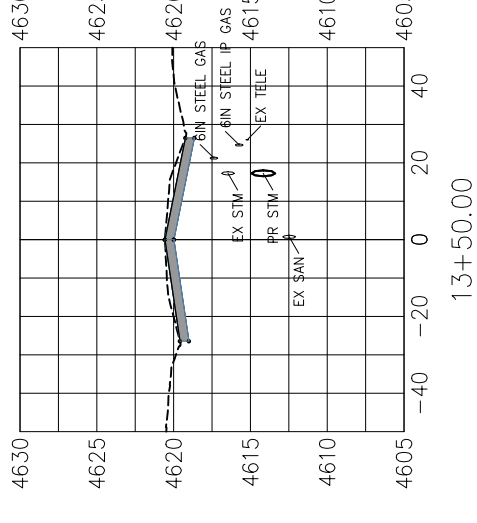
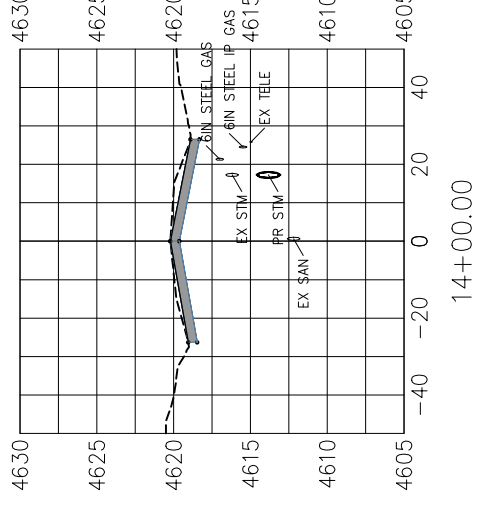
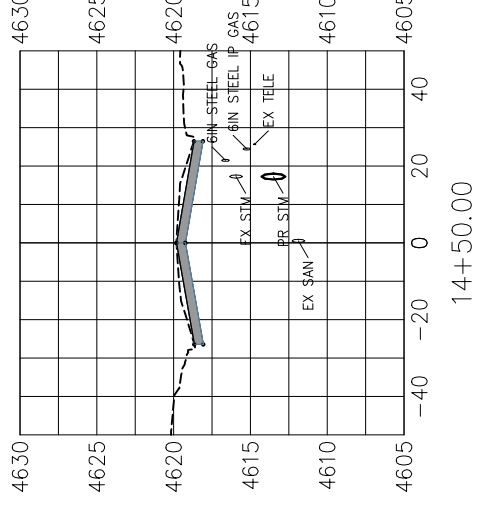
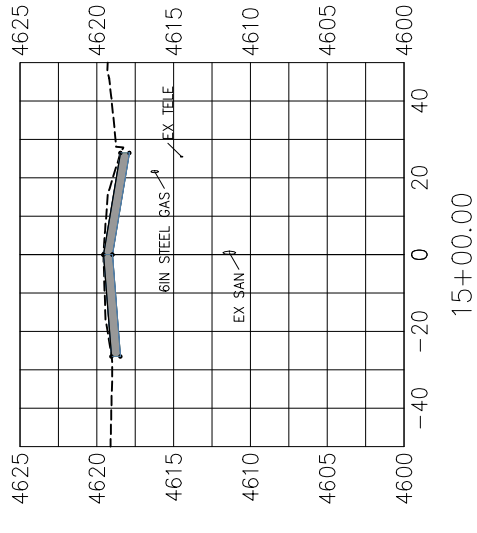
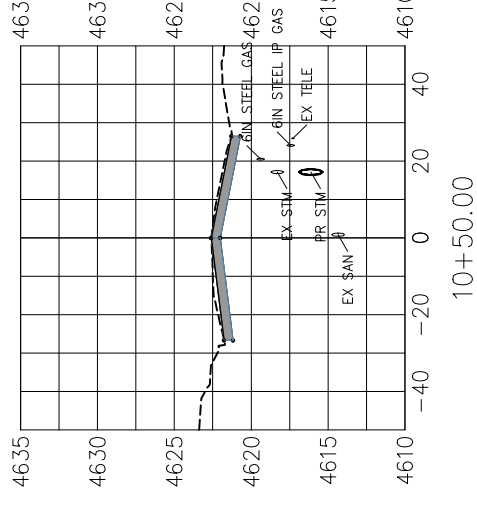
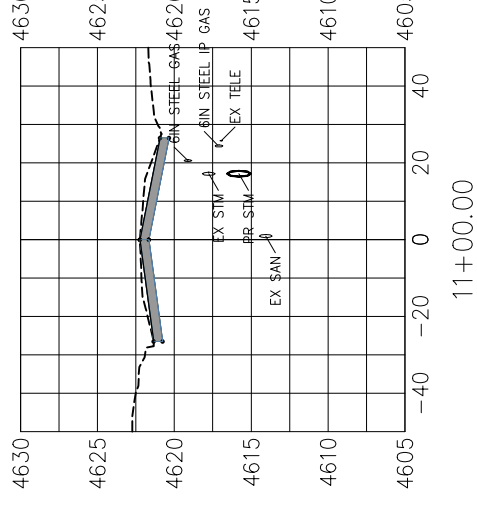
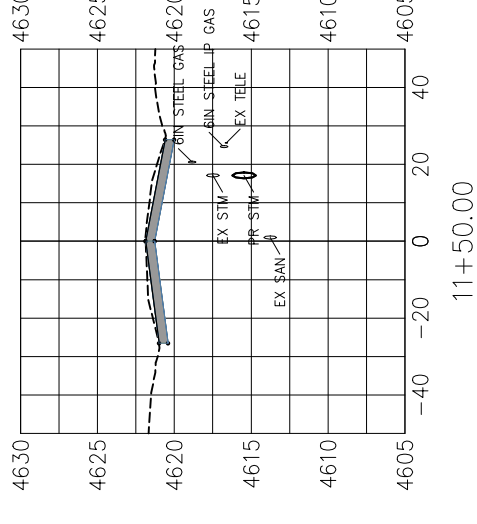
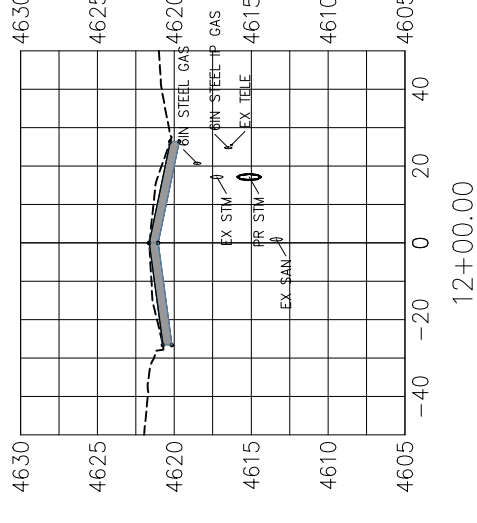
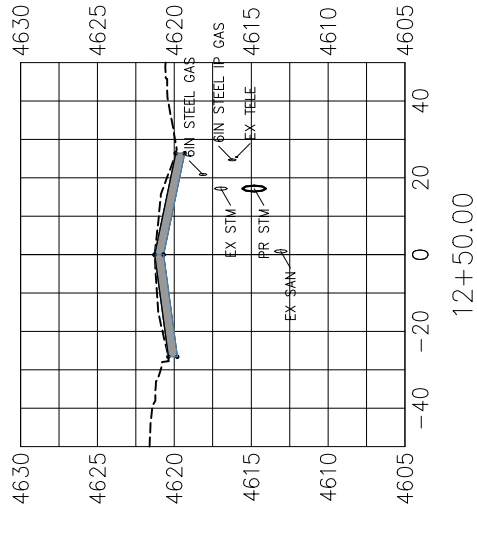
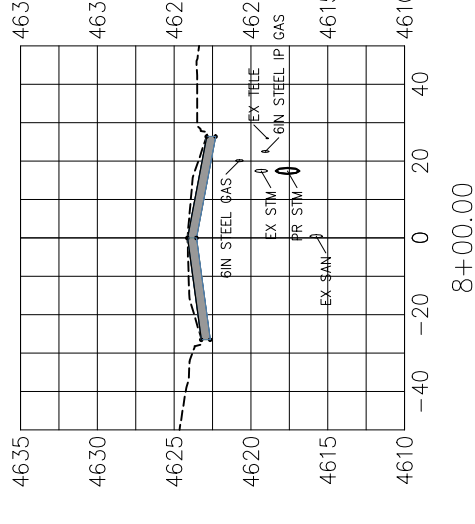
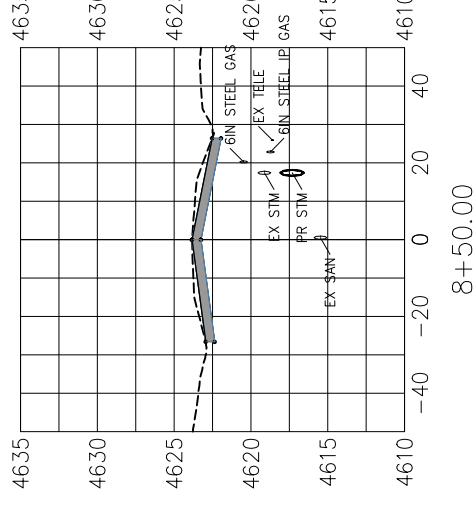
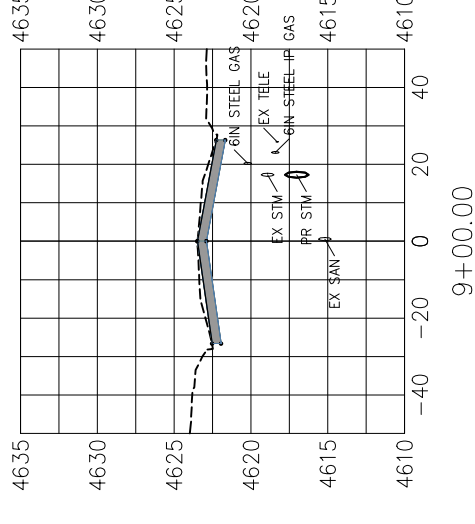
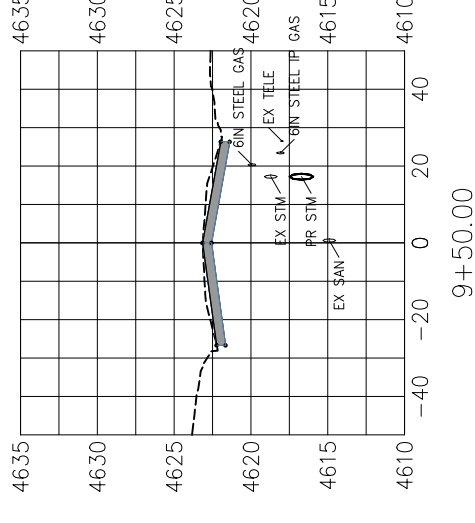
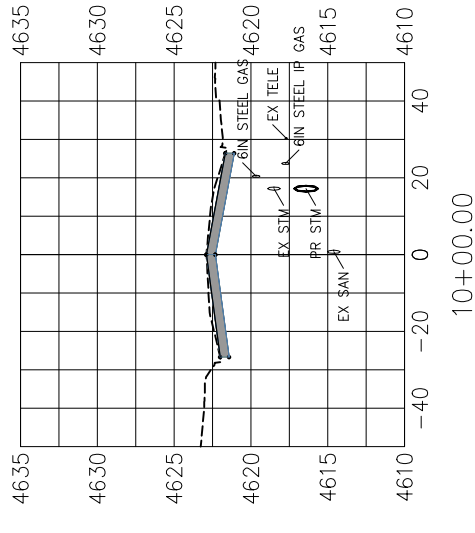
SCALES: PLAN & PROFILE
 HORIZONTAL: 1" = 50'
 0 12.5 25 50
 VERTICAL: 1" = 12.5'
 0 3.13 6.25 12.5



PUBLIC WORKS
 ENGINEERING DIVISION

7TH STREET RECONSTRUCTION
 SECTION VIEWS
 STA 0+50 - STA 7+50

PROJECT NO.



REVISION	DESCRIPTION	DATE	DRAWN BY	DATE
REVISION			DESIGNED BY	DATE
REVISION			CHECKED BY	DATE
REVISION			APPROVED BY	DATE

SCALES: PLAN & PROFILE
 HORIZONTAL: 1" = 50'
 0 12.5 25 50
 VERTICAL: 1" = 12.5'
 0 3.13 6.25 12.5

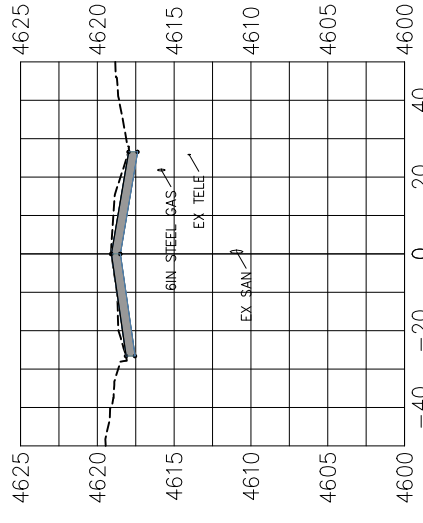


PUBLIC WORKS
 ENGINEERING DIVISION

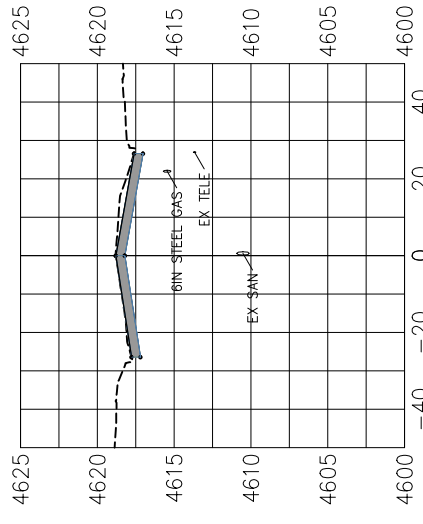
7TH STREET RECONSTRUCTION
 SECTION VIEWS
 STA 8+00 - STA 15+00

\\landproj\2018 7th Street Reconstruction\dwg\7th Reconstr.dwg_07_4/26/2018 2:04:48 PM

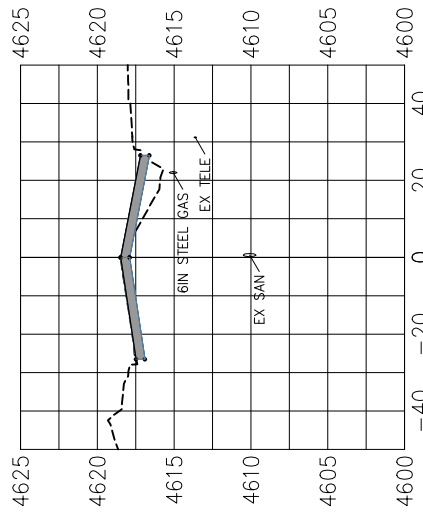
PROJECT NO. _____



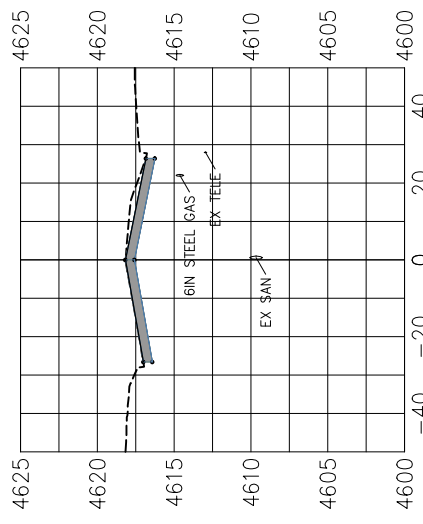
15+50.00



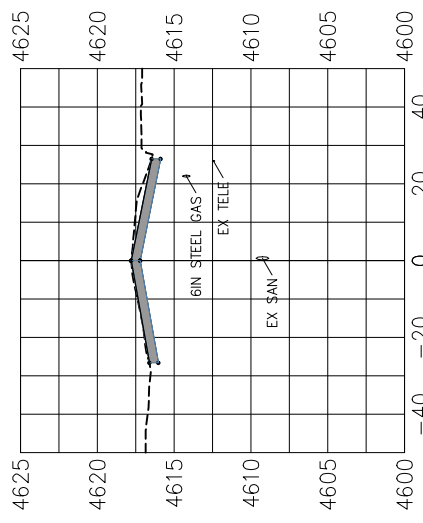
16+00.00



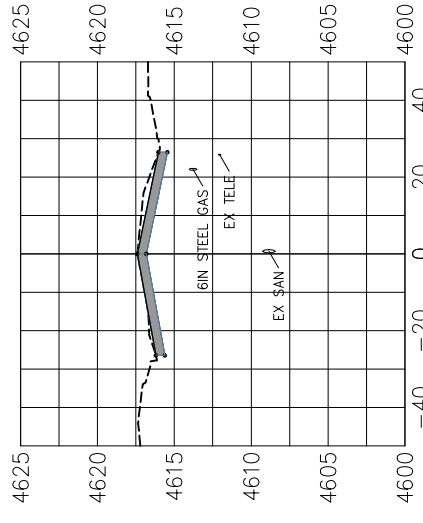
16+50.00



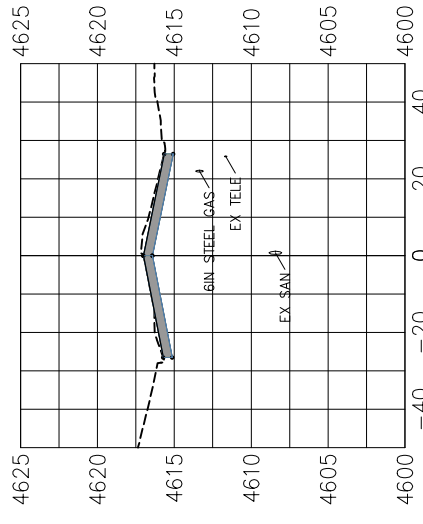
17+00.00



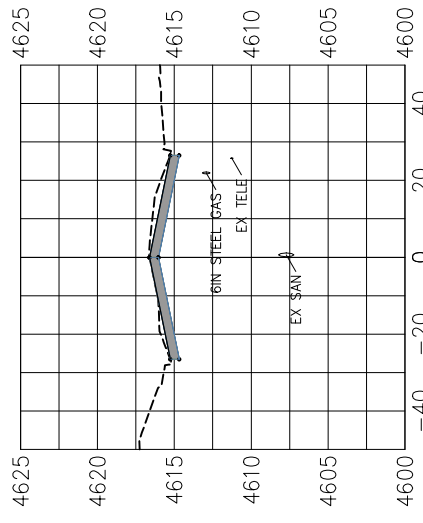
17+50.00



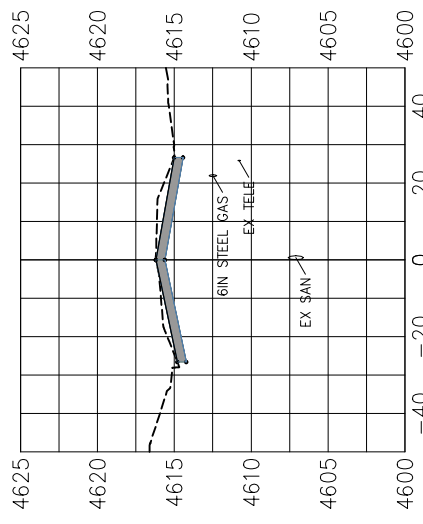
18+00.00



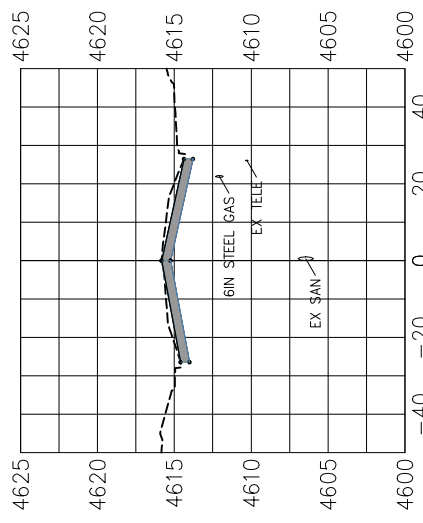
18+50.00



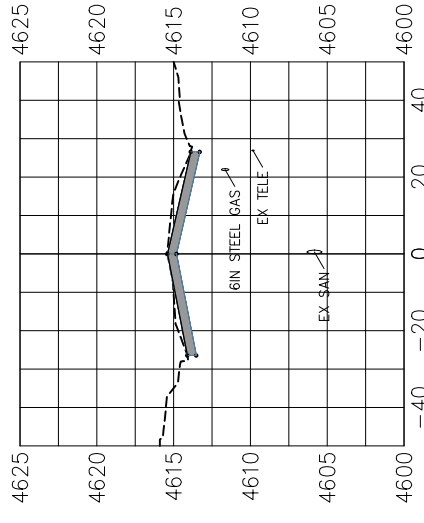
19+00.00



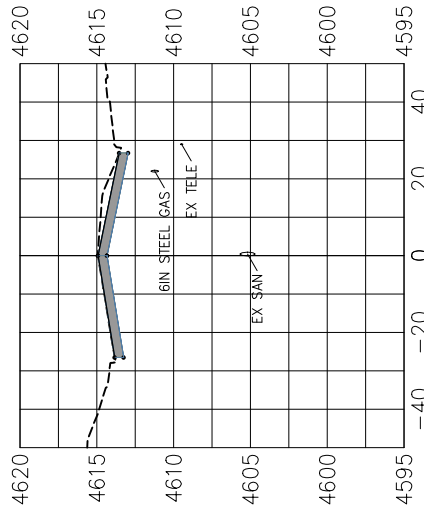
19+50.00



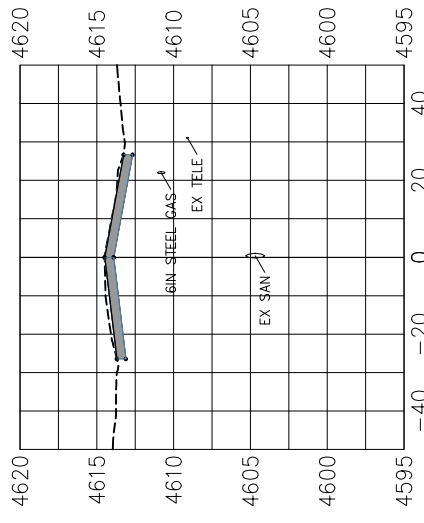
20+00.00



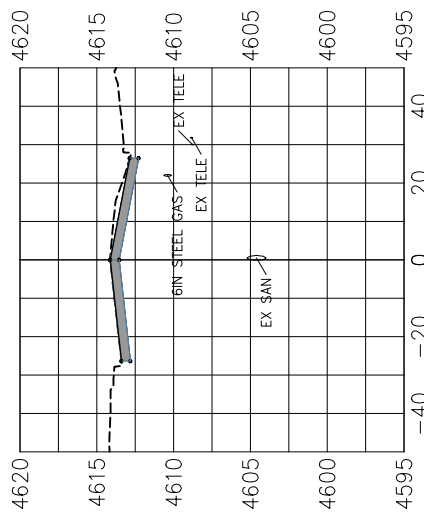
20+50.00



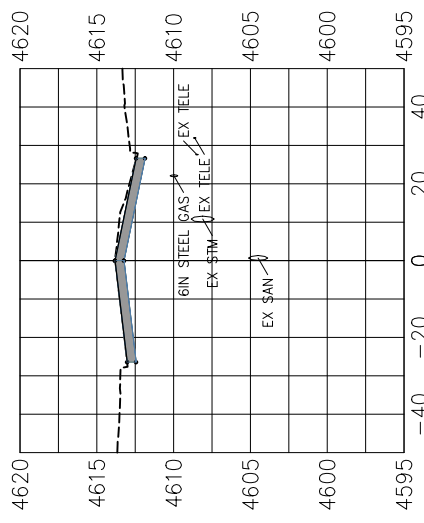
21+00.00



21+50.00



22+00.00



22+50.00

REVISION	DESCRIPTION	DATE	DRAWN BY	DATE

DESIGNED BY	DATE
CHECKED BY	DATE
APPROVED BY	DATE

SCALES: PLAN & PROFILE	
HORIZONTAL: 1" = 50'	0 12.5 25
VERTICAL: 1" = 12.5'	0 3.13 6.25 12.5

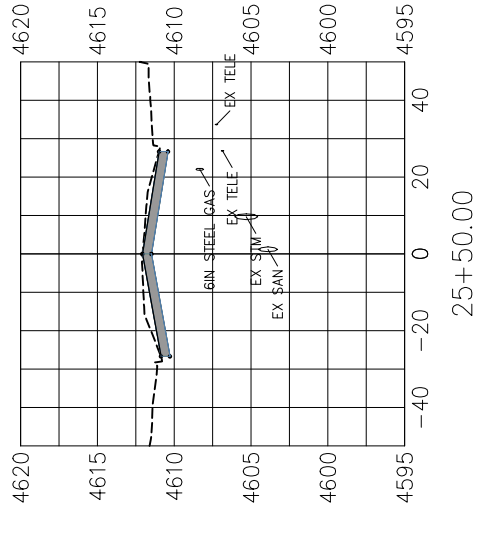
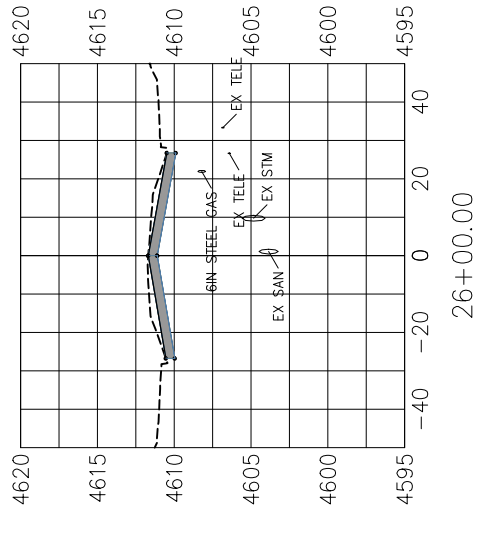
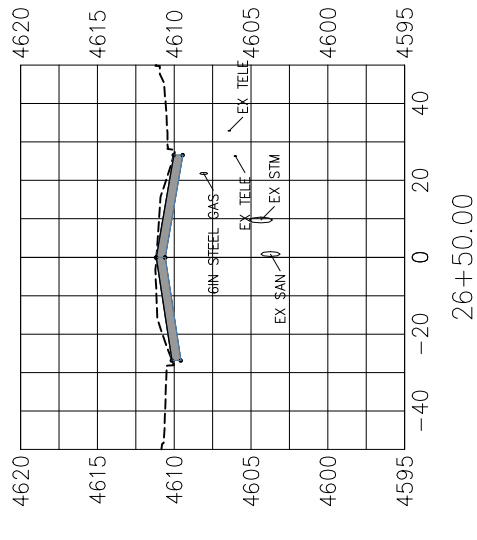
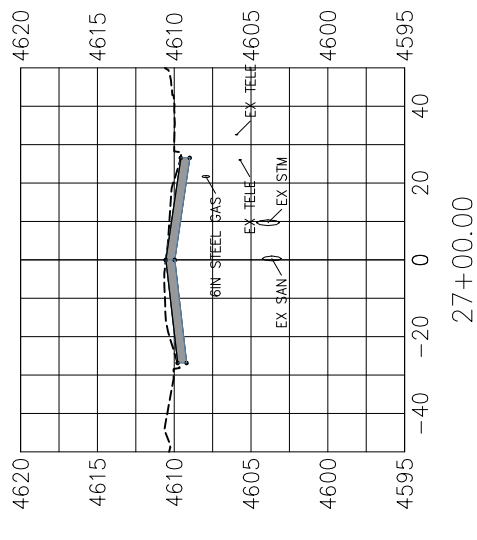
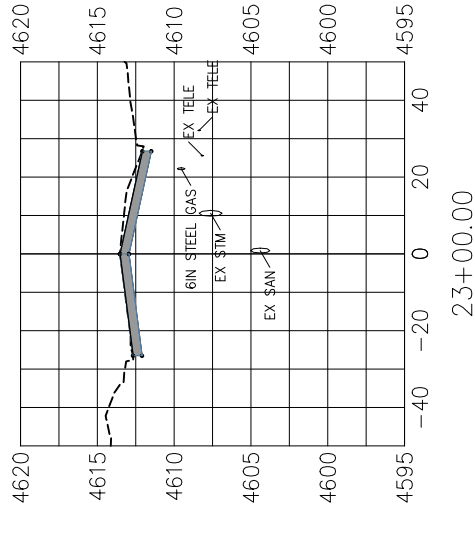
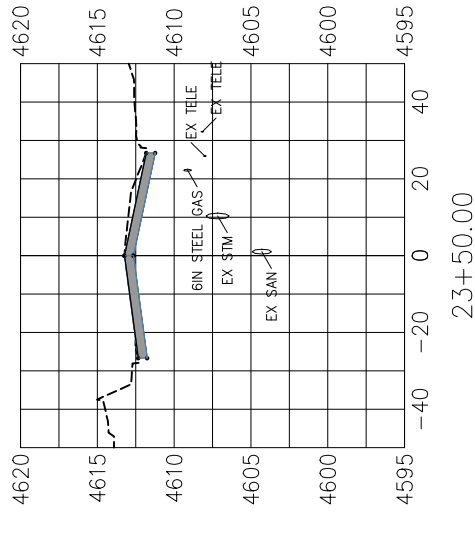
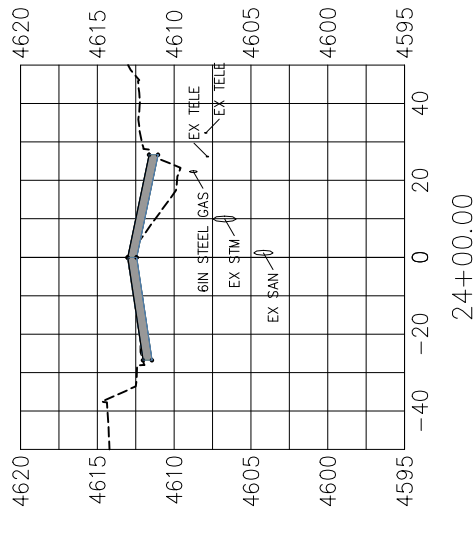
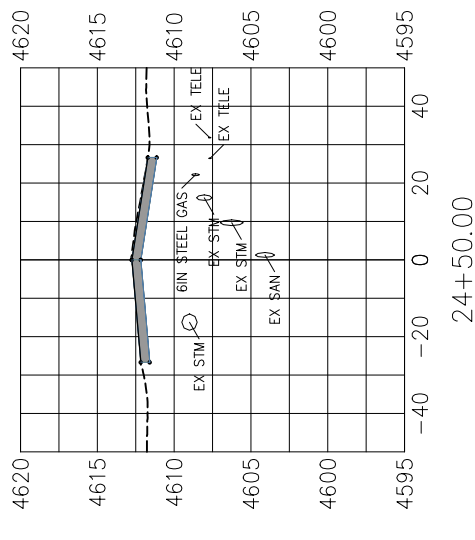
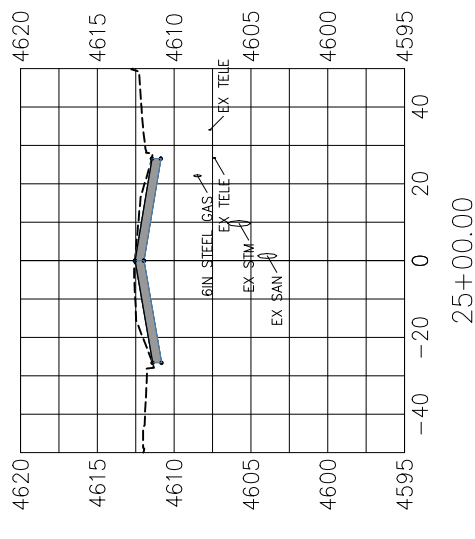


**PUBLIC WORKS
ENGINEERING DIVISION**

**7TH STREET RECONSTRUCTION
SECTION VIEWS
STA 15+50 - STA 22+50**

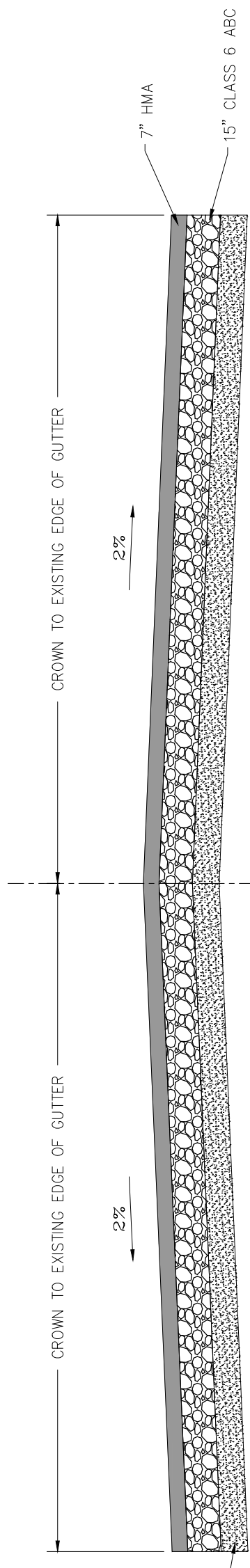
N:\landproj\2018 7th Street Reconstruction\dwg\7th Reconstr.dwg, 4/26/2018 2:04:58 PM

PROJECT NO. _____



TYPICAL SECTION

SCALE: 1" = 5'



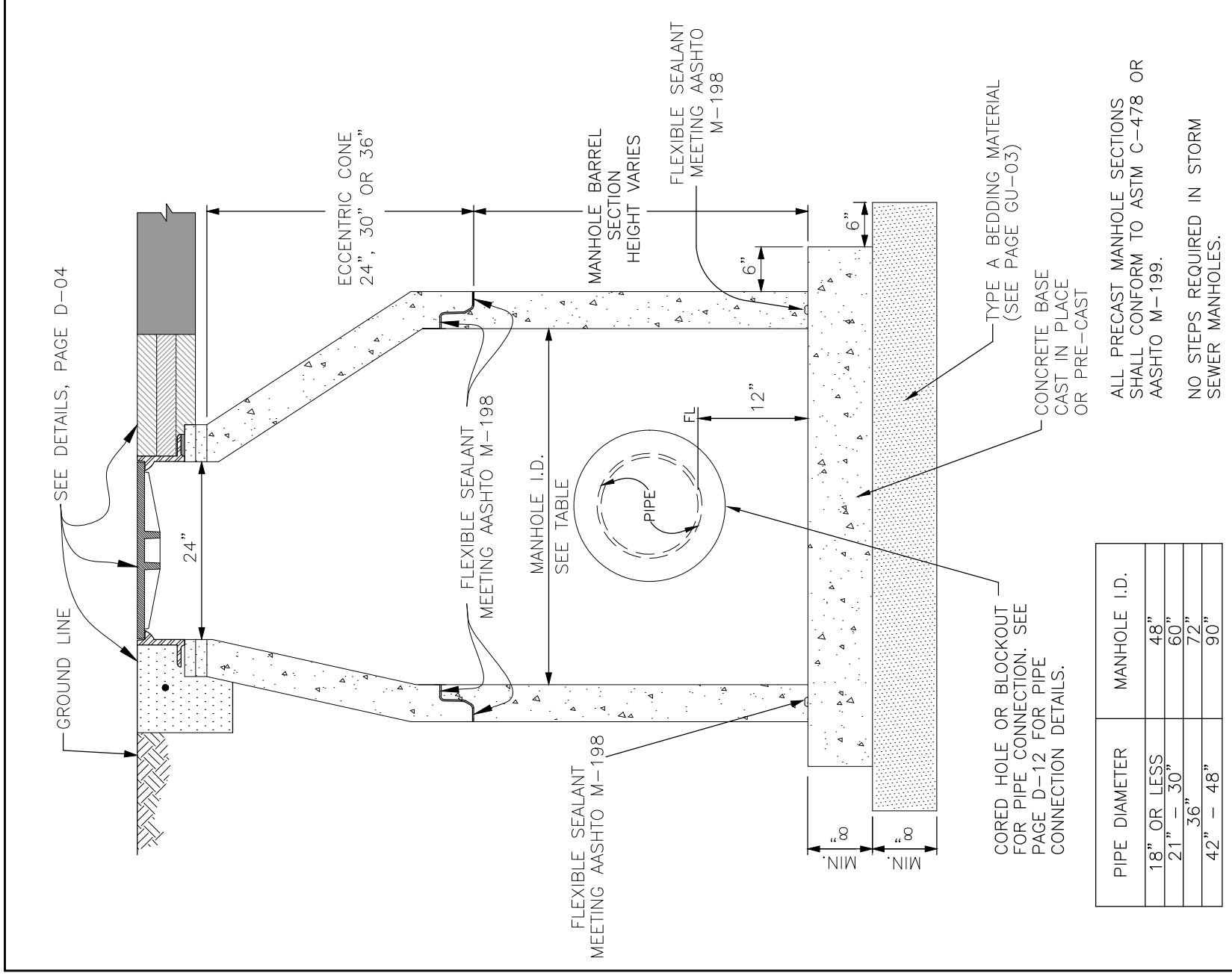
12" MOISTURE CONDITIONED SUB GRADE OR
18" CLASS 3 ABC STABILIZATION AS NEEDED
UNDERLAIN BY MIRAFI RS 580i (OR
APPROVED EQUAL) AS NEEDED

REVISION	DESCRIPTION	DATE	DRAWN BY	DATE
△				
△				
△				
△				



PUBLIC WORKS
ENGINEERING DIVISION

7TH STREET RECONSTRUCTION
SECTION VIEWS
STA 23+00 - STA 27+00



PIPE DIAMETER	MANHOLE I.D.
18" OR LESS	48"
21" - 30"	60"
36"	72"
42" - 48"	90"

STANDARD STORM SEWER MANHOLE

DEPARTMENT OF PUBLIC WORKS AND PLANNING
 ENGINEERING DIVISION
 CITY OF GRAND JUNCTION, COLORADO

STANDARD STORM DRAIN
 DETAIL

APPROVED: DN
 REVISION: FEB 2001
 DRAWN: TLT

PAGE
 D-03

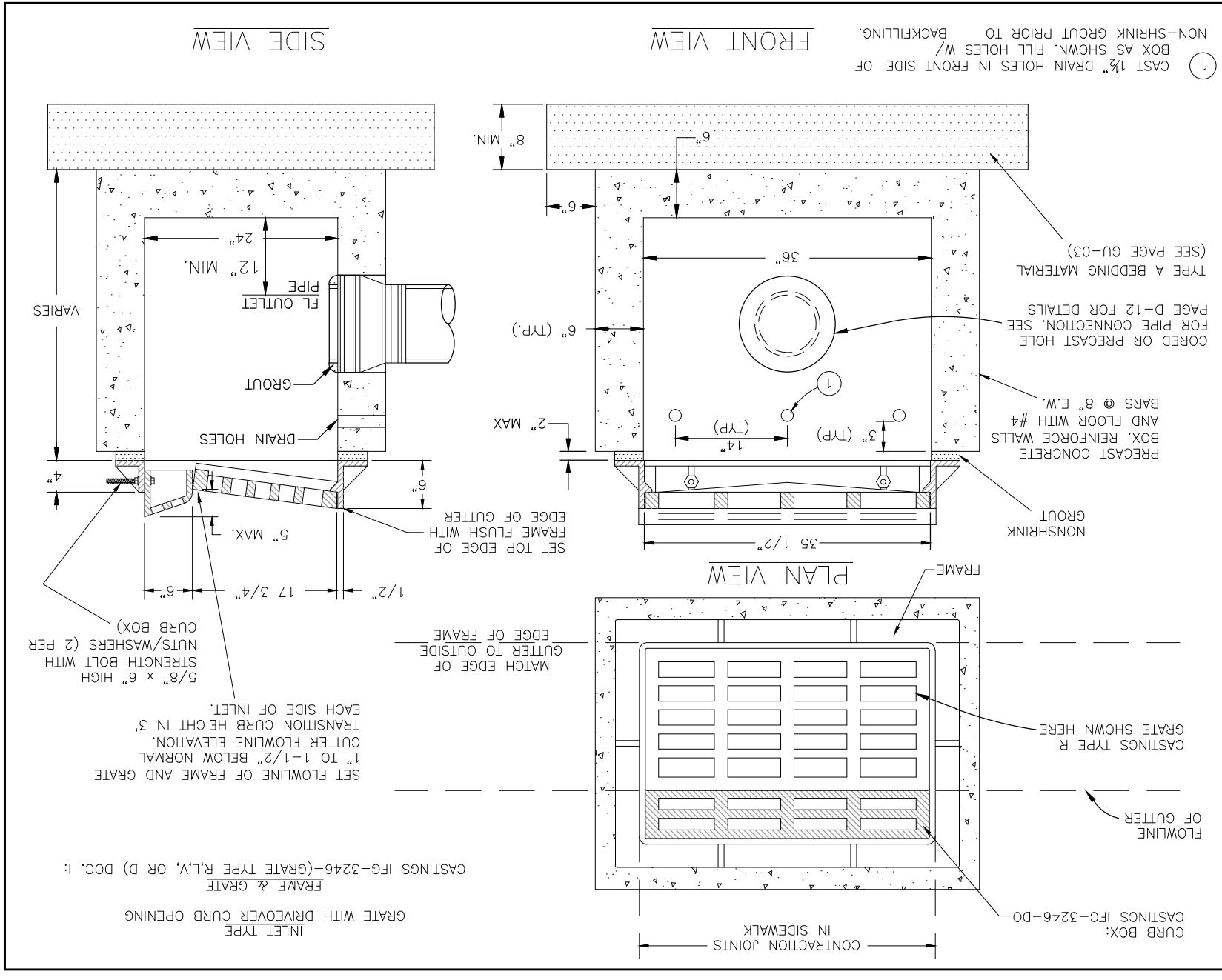
REVISION	DATE	DESCRIPTION

SCALES: PLAN & PROFILE
 NOT TO SCALE



**PUBLIC WORKS
 ENGINEERING DIVISION**

**7TH STREET RECONSTRUCTION
 SECTION VIEWS
 STA 23+00 - STA 27+00**



STORM DRAIN INLET WITH DRIVE OVER CURB OPENING

DEPARTMENT OF PUBLIC WORKS AND PLANNING
 ENGINEERING DIVISION
 CITY OF GRAND JUNCTION, COLORADO

STANDARD STORM DRAIN
 DETAIL

APPROVED: DN
 DATE: APRIL 2001
 DRAWN: GM

PAGE
 D-06