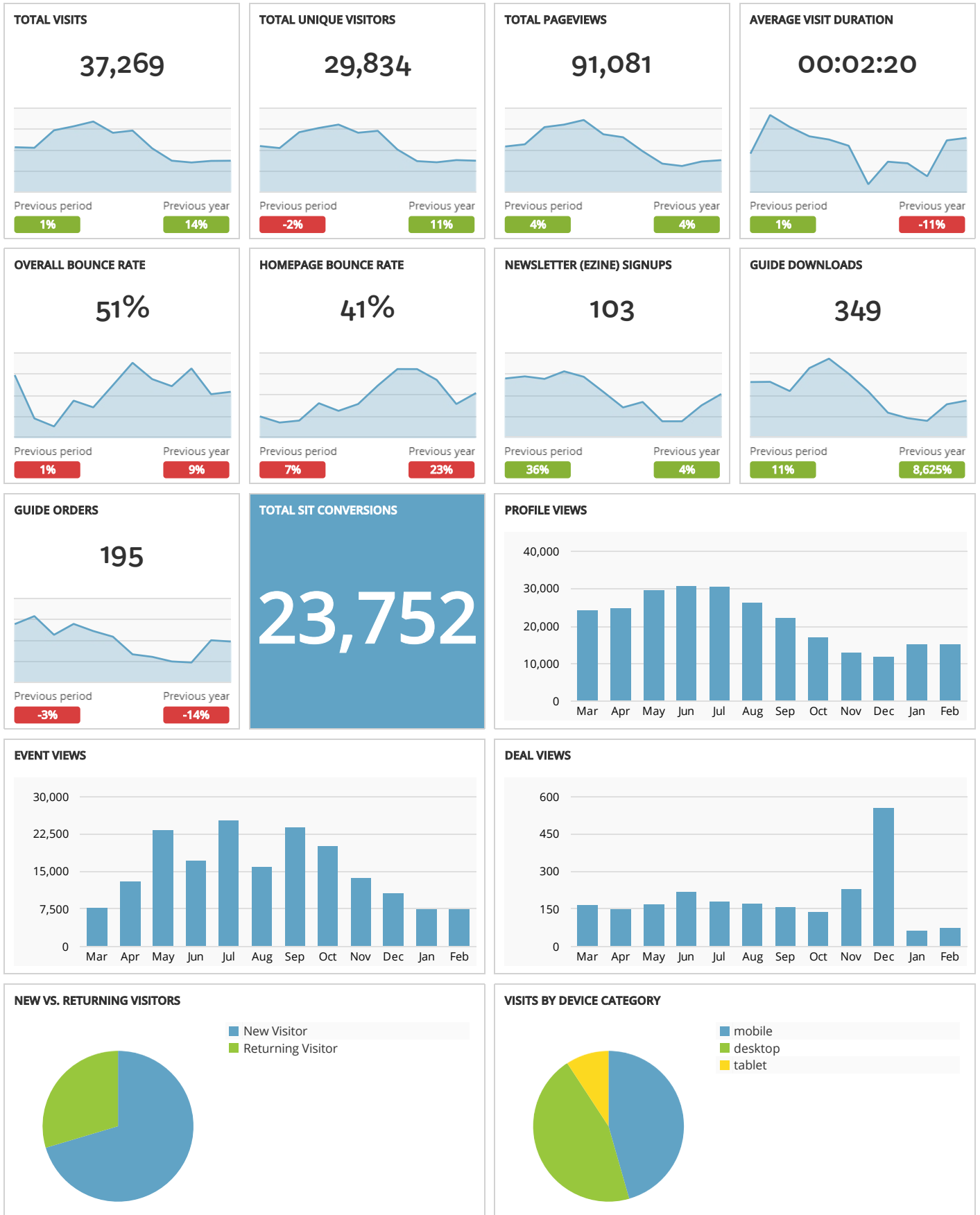


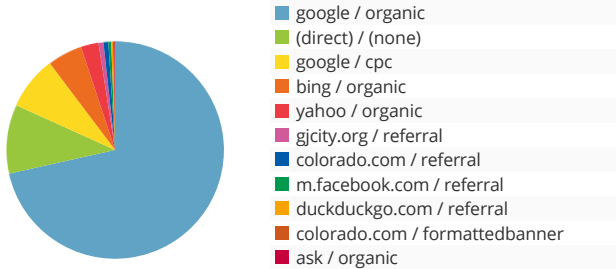
Visit Grand Junction Monthly Dashboard

Report for Feb 1, 2018 - Feb 28, 2018



TRAFFIC AND ENGAGEMENT BY MEDIUM (YEAR OVER YEAR)

	Visits		Average Time On Site		Bounce Rate	
organic	28,878	+8%	00:02:26	-7%	50.68%	+10%
(none)	3,728	+17%	00:01:48	-32%	60.17%	+9%
cpc	2,898	+1,223%	00:02:07	+36%	49.65%	-17%
referral	1,610	-25%	00:02:29	-6%	49.44%	+4%
formattedbanner	78	+255%	00:01:41	-46%	50.00%	=
email	33	-84%	00:01:48	-52%	39.39%	-2%
media	30	+100%	00:00:07	+100%	76.67%	+100%
display	12	-88%	00:04:06	+1,208%	16.67%	-80%
email	1	+100%	00:00:00	+100%	100.00%	+100%
traveler+enews	1	+100%	00:06:21	+100%	0.00%	+100%

VISITS BY SOURCE/MEDIUM

VISITS BY STATE (YEAR OVER YEAR)

	Visits	
Colorado	19,735	+8%
Texas	2,216	+14%
California	1,685	+18%
Utah	1,353	+10%
Illinois	750	+27%
Arizona	646	+38%
Florida	605	+19%
Oregon	546	+208%
Minnesota	447	+55%
New York	412	+26%

VISITS BY CITY (YEAR OVER YEAR)

	Visits	
Grand Junction	8,197	+7%
Denver	5,124	+6%
Dallas	1,160	+16%
Fruita	410	-6%
Salt Lake City	409	+14%
Chicago	395	+41%
Colorado Springs	389	+11%
Aurora	382	-3%
Montrose	372	+31%
Los Angeles	335	+11%

MOST-VIEWED PAGES (MONTH OVER MONTH)

	Pageviews		Bounce Rate	
www.visitgrandjunction.com/	8,160	+1%	41%	+7%
www.visitgrandjunction.com/events-calendar	7,029	+2%	50%	+11%
www.visitgrandjunction.com/things-to-do	4,777	+38%	32%	+32%
www.visitgrandjunction.com/all-restaurants	1,886	+5%	51%	-3%
www.visitgrandjunction.com/hiking-trails	1,867	+15%	31%	+12%
www.visitgrandjunction.com/attractions-culture	1,788	+20%	46%	-18%
www.visitgrandjunction.com/family-activities	1,782	+21%	37%	-16%
www.visitgrandjunction.com/12-incredible-hikes-grand-junction	1,511	+22%	67%	+3%
www.visitgrandjunction.com/hotels-lodging	1,274	+4%	34%	-1%
www.visitgrandjunction.com/10-things-you-can-only-experience-grand-junction	1,202	-21%	65%	+6%

TOP LANDING PAGES BY VISITS (MONTH OVER MONTH)

	Visits	
www.visitgrandjunction.com/	6,383	+3%
www.visitgrandjunction.com/events-calendar	3,076	+6%
www.visitgrandjunction.com/things-to-do	2,174	+80%
www.visitgrandjunction.com/areas/grand-mesa	642	+5%
www.visitgrandjunction.com/10-things-you-can-only-experience-grand-junction	628	-33%
www.visitgrandjunction.com/all-restaurants	622	+11%
www.visitgrandjunction.com/12-incredible-hikes-grand-junction	607	+33%
www.visitgrandjunction.com/hiking-trails	606	+10%
www.visitgrandjunction.com/family-activities	576	-4%
www.visitgrandjunction.com/events/banff-mountain-film-festival-world-tour	491	+320%

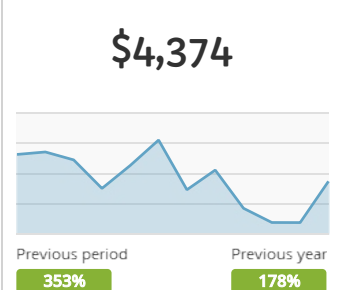
CAMPAIGN TRAFFIC BY SOURCE/MEDIUM (MONTH OVER MONTH)

	Visits	Pageviews/Visit	Avg. Time on Site	Bounce Rate
google / cpc	2,898 +4,225%	2.9 +77%	00:02:07 -41%	50% -21%
colorado.com / formattedbanner	78 -37%	2.9 0%	00:01:41 -11%	50% +7%
centro / media	30 +100%	1.2 +100%	00:00:07 +100%	77% +100%
welcome / email	21 +11%	2.9 -26%	00:02:25 -48%	38% -10%
come / display	10 +25%	3.2 +60%	00:01:56 +43%	10% -60%
newsletter / email	9 -44%	1.4 -8%	00:00:23 -31%	56% -19%
MASTER LIST Newsletter Mailing List / email	3 +100%	2.0 +100%	00:01:46 +100%	0% +100%
adtaxi / display	2 +100%	2.0 +100%	00:14:58 +100%	50% -50%
5280.com / traveler+enews	1 +100%	6.0 +100%	00:06:21 +100%	0% +100%
colorado_tourism / email	1 +100%	1.0 +100%	00:00:00 +100%	100% +100%

ARES PRODUCT REPORT (MONTH OVER MONTH)

	Transactions	Revenue
Fairfield Inn & Suites Grand Junction Downtown/Historic Main Street	13 +333%	\$1,431.04 +390%
SpringHill Suites Grand Junction Downtown/Historic Main Street	13 +225%	\$1,527.00 +276%
Grand Vista Hotel	7 +250%	\$381.00 +323%
Super 8 Grand Junction Colorado	2 +100%	\$114.00 +100%
Courtyard Grand Junction	1 +100%	\$114.71 +100%
Days Inn Grand Junction	1 +100%	\$45.13 +100%
Hampton Inn Grand Junction Downtown/Historic Main Street	1 +100%	\$149.00 +100%
Knights Inn Grand Junction	1 +100%	\$59.49 +100%
La Quinta Inn & Suites Grand Junction	1 =	\$85.00 =
Ramada Grand Junction	1 +100%	\$48.00 +100%

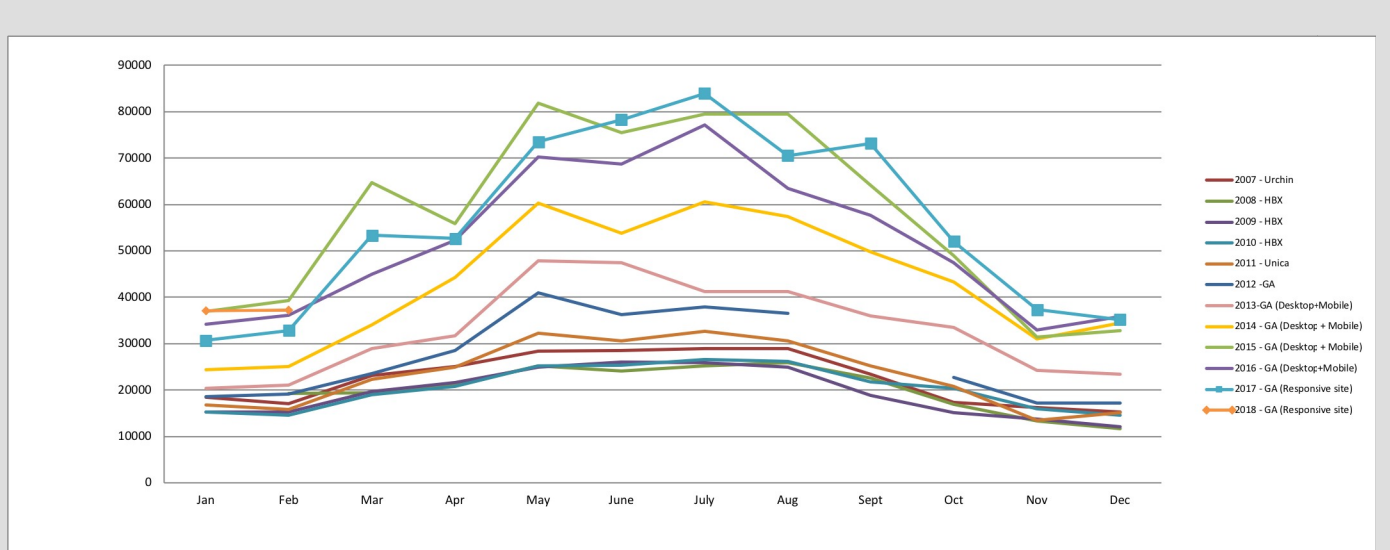
REVENUE OVER TIME



ORGANIC SEARCH TERMS VIA GOOGLE SEARCH CONSOLE (MONTH OVER MONTH)

	Clicks	Impressions	Avg. position
canyon view park	22 -24%	306 -9%	5.7 -2%
grand junction visitors center	8 +14%	45 +10%	21.2 -9%
canyon view park grand junction	5 +150%	81 +200%	5.9 -44%
canyon view park grand junction co	5 +100%	24 +2,300%	4.3 +333%
zephyr	5 +400%	32 +68%	7.3 +2%
canyon view park grand junction colorado	3 +100%	10 +100%	5.0 +100%
restaurants near me	3 +200%	147 +9%	1.0 =
grand valley grill	2 -80%	8 -58%	7.3 +133%
zephyr grand junction co	2 =	12 +140%	3.5 +250%
breakfast near me	1 +100%	32 +14%	1.0 =

VISITS OVER TIME



ENEWSLETTERS (SORTED BY TOTAL DELIVERED)

There is no data for this period

