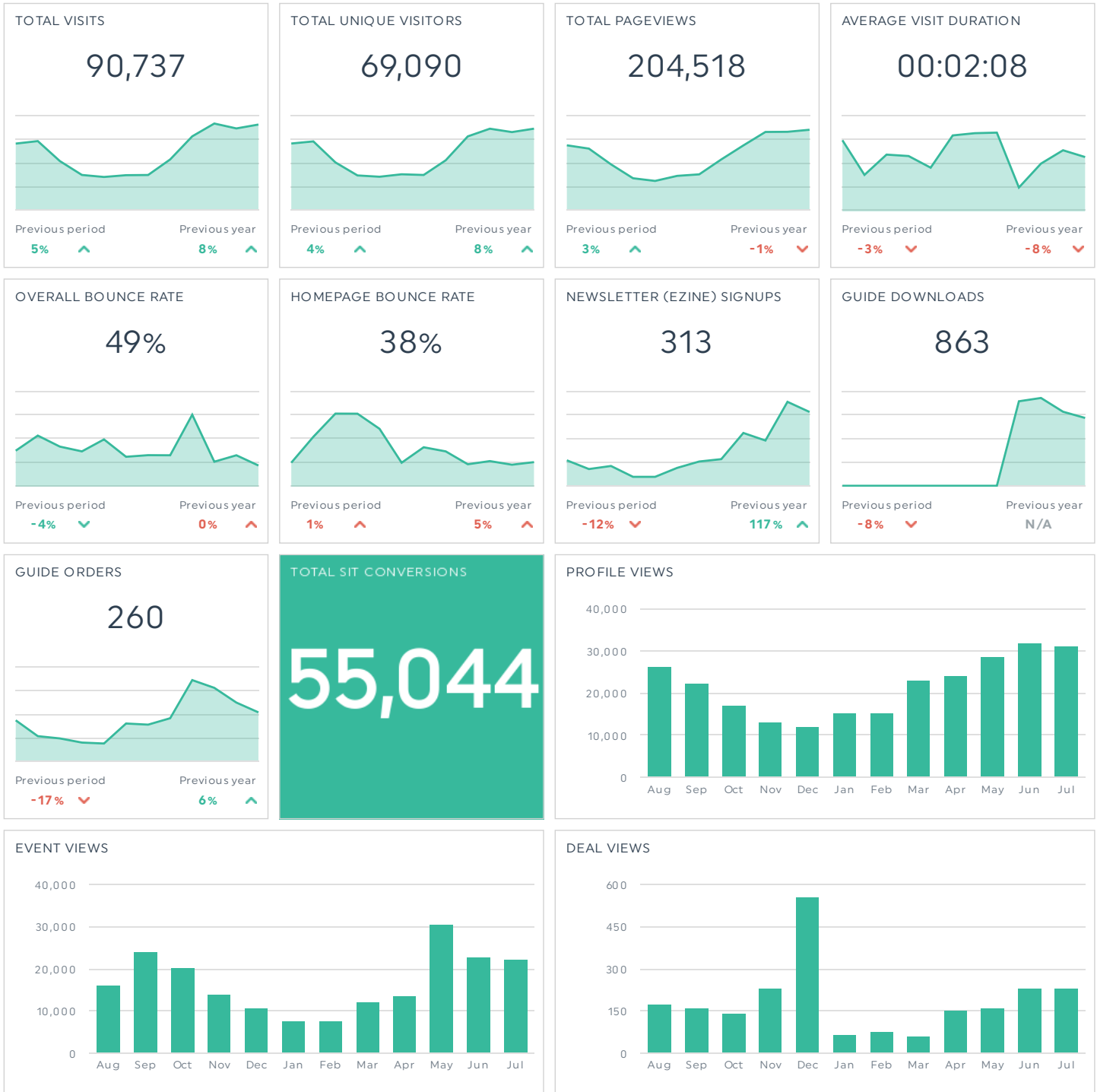


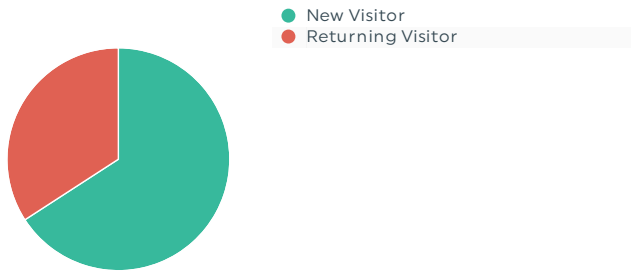


REPORT FOR : JUL 1, 2018 - JUL 31, 2018

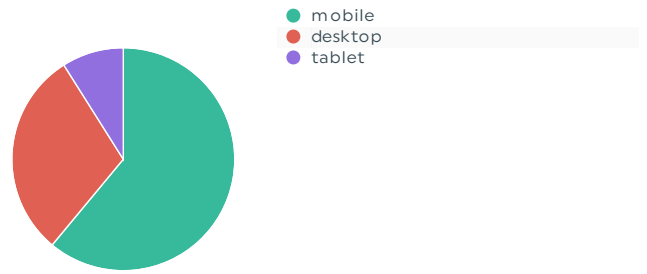
# VISIT GRAND JUNCTION MONTHLY DASHBOARD



NEW VS. RETURNING VISITORS



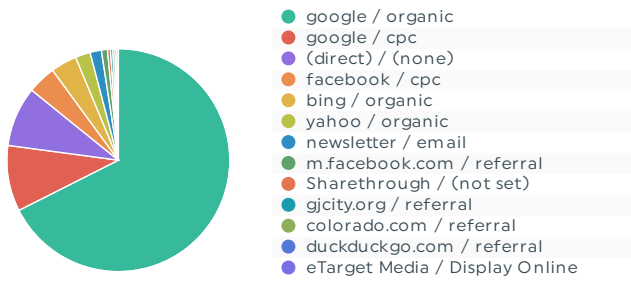
VISITS BY DEVICE CATEGORY



TRAFFIC AND ENGAGEMENT BY MEDIUM (YEAR OVER YEAR)

	Visits		Average Time O...		Bounce Rate	
organic	64,902	-1% ▼	00:02:12	-8% ▼	47.99%	+1% ▲
cpc	12,109	+290% ▲	00:02:06	-33% ▼	48.14%	+32% ▲
(none)	7,660	+1% ▲	00:01:43	-19% ▼	58.25%	+5% ▲
referral	3,524	-26% ▼	00:02:08	+4% ▲	50.51%	-9% ▼
email	1,508	+74% ▲	00:02:24	-12% ▼	50.93%	-8% ▼
(not set)	451	+45,000% ▲	00:00:32	+100% ▲	85.81%	-14% ▼
Display Online	203	+100% ▲	00:02:20	+100% ▲	34.48%	+100% ▲
Native	194	+100% ▲	00:00:12	+100% ▲	90.72%	+100% ▲
media	173	+100% ▲	00:01:09	+100% ▲	65.90%	+100% ▲
formattedbanner	5	-96% ▼	00:02:13	+71% ▲	0.00%	-100% ▼
Press_Release	3	-57% ▼	00:01:55	-49% ▼	0.00%	-100% ▼

VISITS BY SOURCE/MEDIUM



VISITS BY STATE (YEAR OVER YEAR)

	Visits	
Colorado	52,032	+5% ▲
Texas	7,099	+13% ▲
Utah	4,437	+32% ▲
California	4,027	+6% ▲
Illinois	1,760	+13% ▲
Arizona	1,149	-14% ▼
Florida	1,042	+17% ▲
New York	895	+16% ▲
Missouri	868	+15% ▲
Minnesota	838	+19% ▲
Nevada	826	+0% ▲

VISITS BY CITY (YEAR OVER YEAR)

	Visits	
Grand Junction	18,768	+1% ▲
Denver	16,668	+1% ▲
Dallas	4,624	+20% ▲
Salt Lake City	1,686	+21% ▲
Los Angeles	1,256	+6% ▲
Colorado Springs	1,181	+42% ▲
Fruita	1,094	-4% ▼
Chicago	1,076	+20% ▲
Aurora	1,033	+12% ▲
Clifton	738	+6% ▲
Montrose	731	+12% ▲

MOST-VIEWED PAGES (MONTH OVER MONTH)

	Pageviews		Bounce Rate	
www.visitgrandjunction.com/	15,232	+10% ▲	38%	+1% ▲
www.visitgrandjunction.com/events-calendar	13,712	0% ▼	44%	-11% ▼
www.visitgrandjunction.com/things-to-do	12,330	+2% ▲	24%	-6% ▼
www.visitgrandjunction.com/attractions-culture	4,057	+1% ▲	53%	-1% ▼
www.visitgrandjunction.com/10-things-you-can-only-experience-grand-junction	3,685	+65% ▲	61%	+4% ▲
www.visitgrandjunction.com/exploring-grand-mesa-national-forest	3,300	+13% ▲	54%	-12% ▼
www.visitgrandjunction.com/family-activities	3,243	-1% ▼	41%	+9% ▲
www.visitgrandjunction.com/all-restaurants	2,933	+9% ▲	47%	-13% ▼
www.visitgrandjunction.com/areas/colorado-national-monument	2,923	+20% ▲	47%	-4% ▼
www.visitgrandjunction.com/guide-getting-water-grand-junction	2,727	-9% ▼	77%	-14% ▼
www.visitgrandjunction.com/areas/grand-mesa	2,723	+2% ▲	40%	0% ▼

TOP LANDING PAGES BY VISITS (MONTH OVER MONTH)

	Visits	
www.visitgrandjunction.com/	11,750	+11% ▲
www.visitgrandjunction.com/events-calendar	6,504	-1% ▼
www.visitgrandjunction.com/things-to-do	5,866	+3% ▲
www.visitgrandjunction.com/10-things-you-can-only-experience-grand-junction	2,413	+135% ▲
www.visitgrandjunction.com/guide-getting-water-grand-junction	2,263	-11% ▼
www.visitgrandjunction.com/selecting-perfect-palisade-peaches	2,021	+137% ▲
www.visitgrandjunction.com/exploring-grand-mesa-national-forest	1,862	+14% ▲
www.visitgrandjunction.com/areas/grand-mesa	1,512	+0% ▲
www.visitgrandjunction.com/12-incredible-hikes-grand-junction	1,479	+5% ▲
www.visitgrandjunction.com/events/colorado-riverfest	1,419	+1,083% ▲
www.visitgrandjunction.com/events/independence-day-parade-downtown-gj	1,222	+277% ▲

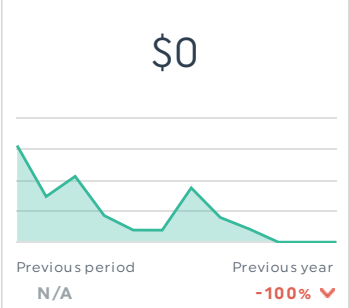
CAMPAIGN TRAFFIC BY SOURCE/MEDIUM (MONTH OVER MONTH)

	Visits	Pageviews/Visit	Avg. Time on Site	Bounce Rate
google / cpc	8,424 +10% ▲	3.4 -1% ▼	00:02:49 +1% ▲	36% -1% ▼
facebook / cpc	3,642 -8% ▼	1.3 -2% ▼	00:00:28 -4% ▼	76% -8% ▼
newsletter / email	1,450 +31% ▲	2.4 -6% ▼	00:02:24 -11% ▼	51% -5% ▼
eTarget Media / Display Online	203 +100% ▲	2.8 +100% ▲	00:02:20 +100% ▲	34% +100% ▲
Sharethrough / Native	194 +100% ▲	1.1 +100% ▲	00:00:12 +100% ▲	91% +100% ▲
colorado.com / media	111 +41% ▲	2.3 +11% ▲	00:01:47 -5% ▼	51% -6% ▼
welcome / email	55 -43% ▼	2.7 -22% ▼	00:02:24 -47% ▼	36% +20% ▲
centro / media	43 +100% ▲	1.3 +100% ▲	00:00:02 +100% ▲	88% +100% ▲
trueview / cpc	42 +180% ▲	1.6 +2% ▲	00:02:10 +782% ▲	71% -3% ▼
sojern / media	19 -71% ▼	1.0 -13% ▼	00:00:00 -100% ▼	100% +10% ▲
colorado.com / formattedbanner	5 -79% ▼	3.6 +27% ▲	00:02:13 -55% ▼	0% -100% ▼

ARES PRODUCT REPORT (MONTH OVER MONTH)

	Transactions		Revenue	
Americas Best Value Inn	0	+100% ▲	\$0.00	+100%
Candlewood Suites Grand Junction NW	0	+100% ▲	\$0.00	+100%
Castle Creek Bed & Breakfast	0	+100% ▲	\$0.00	+100%
Clarion Inn Grand Junction	0	+100% ▲	\$0.00	+100%
Columbine Motel	0	+100% ▲	\$0.00	+100%
Comfort Inn Grand Junction	0	+100% ▲	\$0.00	+100%
Courtyard Grand Junction	0	+100% ▲	\$0.00	+100%
Days Inn Grand Junction	0	+100% ▲	\$0.00	+100%
DoubleTree by Hilton Grand Junction	0	+100% ▲	\$0.00	+100%
Econo Lodge Grand Junction	0	+100% ▲	\$0.00	+100%
Fairfield Inn & Suites Grand Junction Downtown/Historic Main Street	0	+100% ▲	\$0.00	+100%

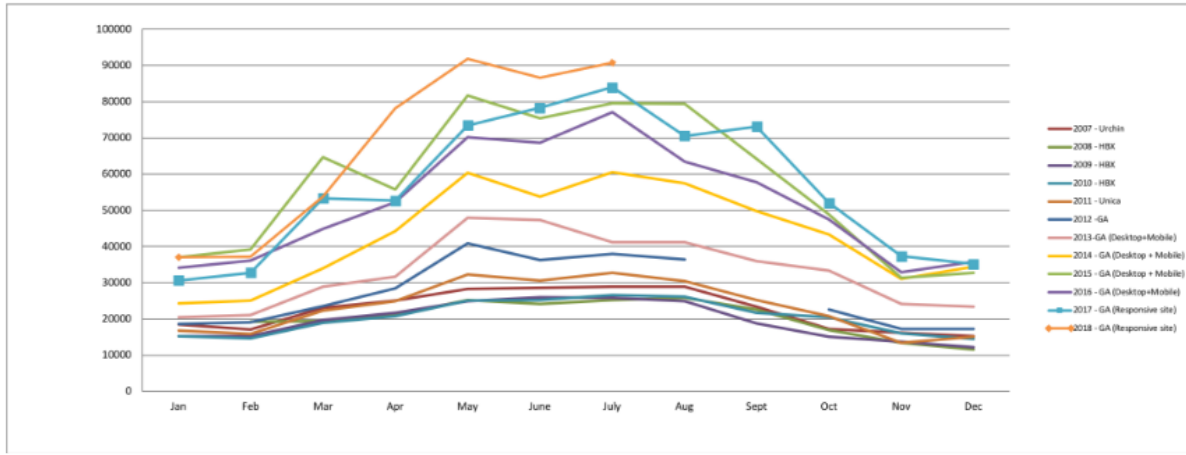
REVENUE OVER TIME



ORGANIC SEARCH TERMS VIA GOOGLE SEARCH CONSOLE (MONTH OVER MONTH)

	Clicks	Impressions	Avg. position
canyon view park	72 +76% ▲	465 +18% ▲	3.5 +27% ▲
canyon view park grand junction	44 +57% ▲	313 +33% ▲	3.6 -21% ▼
grand junction visitor center	17 +70% ▲	122 +45% ▲	6.3 +41% ▲
restaurants near me	8 +14% ▲	338 +21% ▲	1.0 -3% ▼
grand junction visitors center	6 +20% ▲	40 -22% ▼	23.3 +32% ▲
zephyr grand junction	6 -33% ▼	20 -33% ▼	4.0 =
colorado state parks free days 2018	5 +100% ▲	16 +100% ▲	4.8 +100% ▲
grand valley grill	5 =	11 -8% ▼	6.5 +84% ▲
canyon view park grand junction co	4 +100% ▲	24 +85% ▲	11.8 -28% ▼
parks in grand junction	4 +100% ▲	95 -28% ▼	1.0 =
restaurants in grand junction	4 +100% ▲	71 +129% ▲	1.0 =

VISITS OVER TIME



NEWSLETTERS (SORTED BY TOTAL DELIVERED)

There is no data for this period

