

Grand Junction Regional Communications Center

Month / Year October 2018

Staffing

Positions budgeted 55

Positions staffed 45

Training

Number of Trainees 10

Entry Level 3

Intermediate 2

Probationary 5

Activity

GJPD Calls for Service 6,843

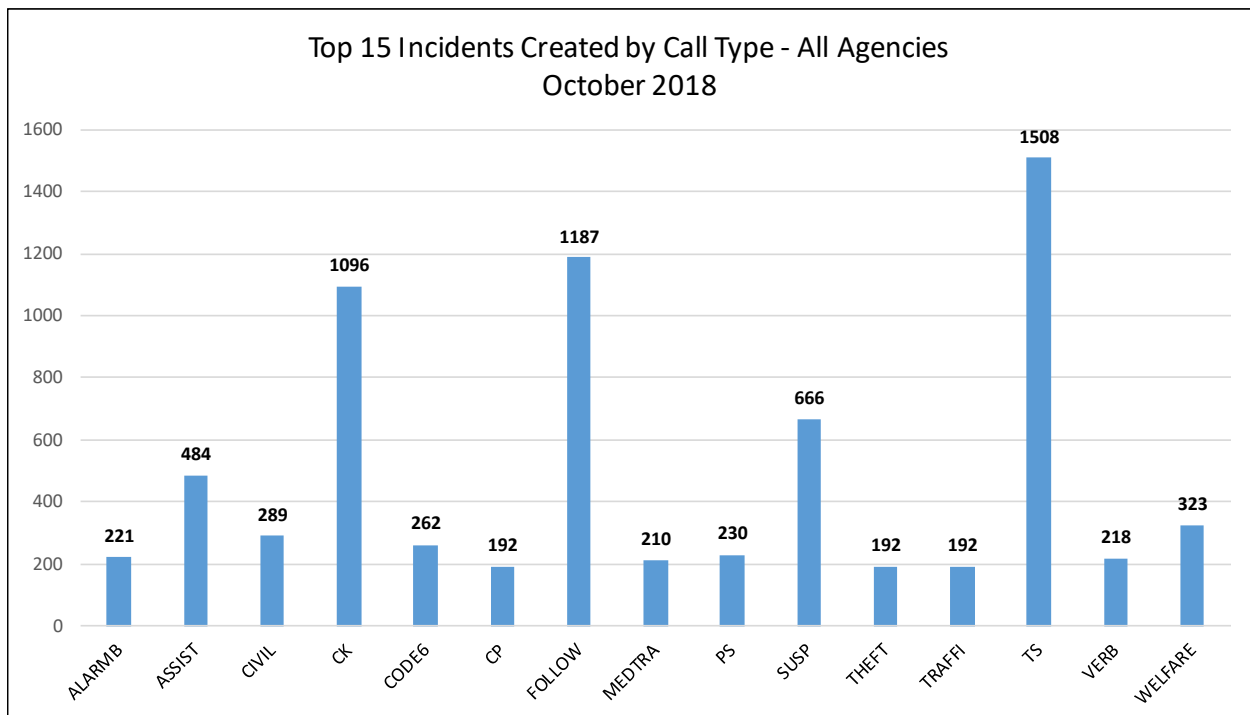
All Law Enforcement CFS 11,712

All Fire/EMS CFS 2,043

All Agency Phone Calls* 25,517

All Agency CFS 13,755

Mobile Comm. Vehicle Used 0



Grand Junction Regional Communications Center

Incident Summary by Agency - October 2018			
Law Enforcement		Fire/EMS	
Collbran Marshal's Office	12	Central Orchard Mesa Fire Dept	13
Colorado National Monument	41	Clifton Fire Dept	297
DeBeque Marshal's Office	66	DeBeque Fire Dept	11
Fruita Police Dept	686	East Orchard Mesa Fire Dept	2
Grand Junction Police Dept	6,843	Gateway Fire Dept	9
Mesa County Sheriff's Office	3,682	Glade Park Fire Dept	1
Mesa Co Criminal Justice Services	85	Grand Jct Regional Airport	4
Mesa County Valley School Dist	7	Grand Jct Fire Dept	1,413
Palisade Police Dept	287	Lands End Fire Dept	15
VA Police Dept	3	Lower Valley Fire Dept	173
		Mesa County Fire Marshal	2
		Palisade Fire Dept	82
		Plateau Valley Fire Dept	17
		St. Mary's CareFlight Transport	4

**GRAND JUNCTION POLICE DEPARTMENT
PROFESSIONAL STANDARDS**

**OCCURRENCE DETAIL REPORT
Reporting period: 10/1/2018 - 10/31/2018**

Department review

Internal commendation

10/20/2018 2018-00077 Officers responded to a male who had stopped breathing. Upon arrival they took over CPR, which was being performed by a family member. EMS later arrived and were able to sustain a pulse for the male and he was transported for continued treatment. The officers provided great chest compressions and were integral in regaining heart function and definitely contributed to sustaining his life.

Employee 1 Commend employee *Lifesaving award*
Employee 2 Commend employee *Lifesaving Award*

2 Internal commendation

Use of force

10/21/2018 2018-00136 Officers responded to a fight in progress call and were confronted with a subject that was out of control and aggressively coming at and trying to fight officers. After being pushed back twice by an officer the subject attempted to rush and tackle the officer. The officer attempted to take the subject to the ground without success and another officer applied the LVNR in an attempt to gain control. Ultimately four officers attempted to get the subject under control and the subject was rendered unconscious with a Level 3 LVNR and was taken into custody.

Employee 1 Followed policy *RTR followed policy and response was appropriate for a probable ACE event.*
Employee 2 Followed policy *RTR followed policy and response was appropriate for a probable ACE event.*
Employee 3 Followed policy *RTR followed policy and response was appropriate for a probable ACE event.*
Employee 4 Followed policy *RTR followed policy and response was appropriate for a probable ACE event.*

4 Use of force

**GRAND JUNCTION POLICE DEPARTMENT
PROFESSIONAL STANDARDS**

**OCCURRENCE DETAIL REPORT
Reporting period: 10/1/2018 - 10/31/2018**

Outside Commendation

Outside commendation

10/1/20182018-00128 DC Nordine forwarded a voicemail from Nancy Dennis who advised her daughter, Tabitha, was involved in a crash that Officer responded to. Nancy advised the officer was really nice and did a great job handling the incident and consoling her daughter. Nancy wanted the officer to be recognized for his performance.

Employee 1 None *Great Customer Service*

10/10/2018 2018-00133 Payton was involved in a traffic crash and it was her first ever. The Officer who arrived on scene was very professional, absolutely wonderful, very kind and handled the situation so well. He is an exemplary officer, the exact example of those officers we want in this town. He went above and beyond and she really appreciated that.

Employee 1 None *Great Customer Service*

2 Outside commendation

END OF REPORT

Colorado Mesa University
Activity Report
Oct 2018

For Internal Use Only



	PD Oct 2017	CSO Oct 2017	Total Oct 2017	PD Oct 2018	CSO Oct 2018	Total Oct 2018	% Difference SAME MONTH LAST YR	YTD 2017	YTD 2018	% Change YTD
Campus Patrol/Checks/Other:										
Foot Patrol (min)	5070	1460	6530	8987	0	8987	38%	45773	45712	0%
Bicycle Patrol (min)	0	0	0	0	0	0	N/A	1530	0	-100%
Academic Building Checks	194	45	239	269	0	269	13%	1612	1510	-6%
Library Checks	35	4	39	36	0	36	-8%	269	269	0%
Residence Hall Checks	72	2	74	118	0	118	59%	589	982	67%
WCCC Checks	15	2	17	6	0	6	-65%	88	68	-23%
Campus / Other Meetings (min)	46	20	66	3710	0	3710	N/A	595	7274	N/A
Skills Instructor Hours	22	0	22	18.5	0	18.5	-16%	86	93.5	9%
Campus Activity G1										
Dispatched Incidents	129	14	143	256	0	256	79%	919	1079	17%
Reports	31	2	33	24	0	24	-27%	213	170	-20%
Felony Arrests	1	0	0	0	0	0	N/A	5	9	80%
Summons/Arrests	6	0	6	5	0	5	-17%	48	47	-2%
Arrests Others	0	0	0	1	0	1	N/A	14	18	29%
Warnings	30	0	30	37	0	37	23%	247	235	-5%
Traffic Summons	8	0	8	6	0	6	-25%	50	87	74%
Sex Assaults	0	0	0	5	0	5	N/A	4	13	225%
George Area Activity G2										
	Oct-17	Oct-18	Inc/Dec	%Change	YTD 17	YTD 18	% Change YTD			
Dispatched Incidents	155	126	-29	-19%	1200	985	-18%			
Reports	27	10	-17	-63%	236	151	-36%			
Felony Arrests	1	0	-1	-100%	4	9	125%			
Summons/Arrest	6	8	2	33%	27	24	-11%			
Arrest Other	2	3	1	50%	48	22	-54%			
Warnings	17	18	1	6%	207	169	-18%			
Traffic Summons	1	4	3	300%	38	17	-55%			
Sex Assaults	1	0	-1	-100%	2	3	50%			
Parking Summons	2	4	2	100%	42	28	-33%			
Traffic Stops	6	16	10	167%	156	87	-44%			
Party Calls	10	9	-1	-10%	81	38	-53%			

***Starting August 2018
Campus and Other
Meetings are now being
tracked by minutes instead
of number of meetings.

Colorado Mesa University
Activity Report
Oct 2018

For Internal Use Only

Special Events/Activity Log:

Weekly Meeting With John Marshall (5)	225 min	
December Commencement meeting	60 min	
Dr Reece Presentation (3 Officers)	60 min	35 attendees
Students of Concern (4)	240 min	
Meeting with Pua (2)	60 min	
FYI Presentations (13 total)	780 min	300 attendees
DV Presentation	60 min	25 attendees
SART Training	360 min	
CJ Meet and Greet (2 Officers)	120 min	6 attendees
Student Services Director's Meeting (2)	120 min	
WCCC Oral Board Prep	60 min	21 attendees
Prof. Hein's Q&A (4 Officers)	75 min	50 attendees
Admission's Meeting (5)	150 min	6 attendees
Party Smart (4)	120 min	16 attendees
American Gov't Presentation	75 min	50 attendees
Campus Safety Talk (2)	105 min	32 attendees
Admission's Meeting (4)	120 min	
Dispatch Tour	90 min	
Records Tour	90 min	
10th Circuit Court of Appeals	240 min	

Party Smart:

10/13/2018	868 Hall Ave
10/20/2018	923 Rood Ave
10/26/2018	1353 N 24th St.
10/26/2018	1428 Mesa Ave
10/27/2018	2021 N. 17th St
10/27/2018	1716 N. 19th St
10/27/2018	1330 Elm Ave
10/31/2018	1364 Mesa Ave

October 2018 - Code Enforcement Monthly Summary Report

Total New Cases for the Month 70

Total Closed Cases for Month 78

Citations

Warning 12

Voluntary Compliance Request 19

Notice of Violation 27

Administrative Citation 3

Summons 1

Total Active Cases 117

Year to Date

Total New Cases Year to Date 737

Total Closed Cases Current Year 670

Citations YTD

Warning 148

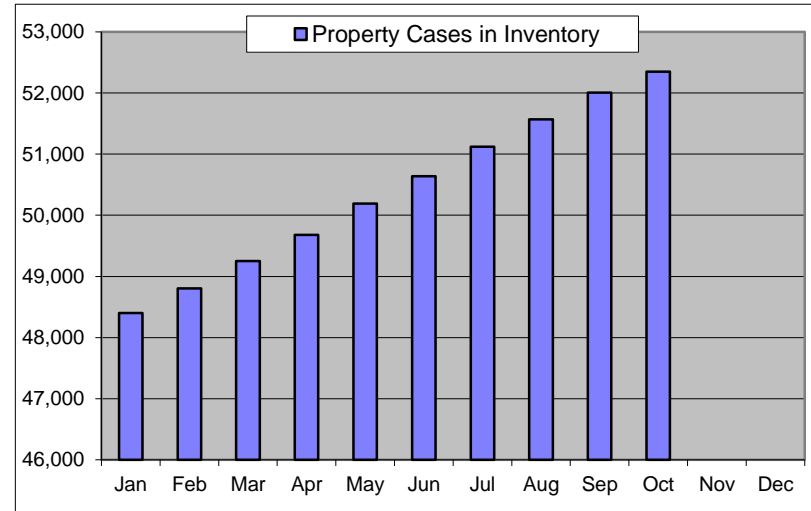
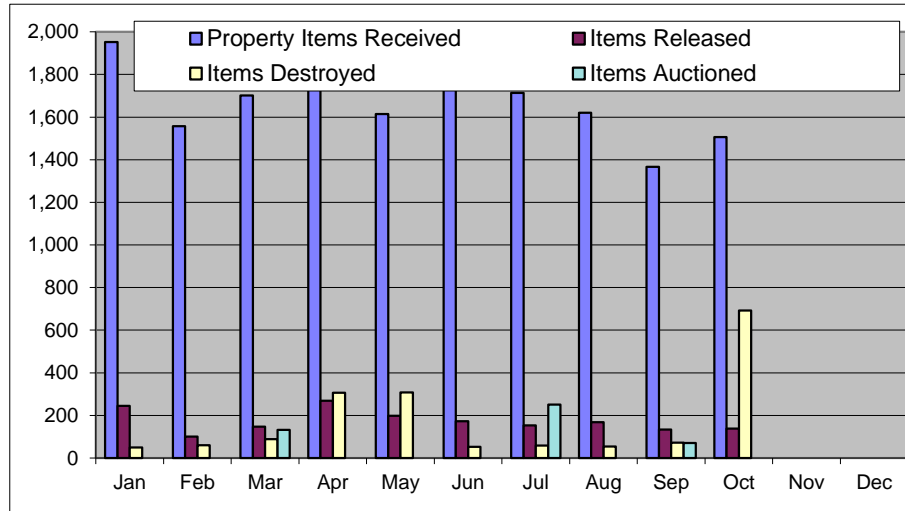
Voluntary Compliance Request 193

Notice of Violation 198

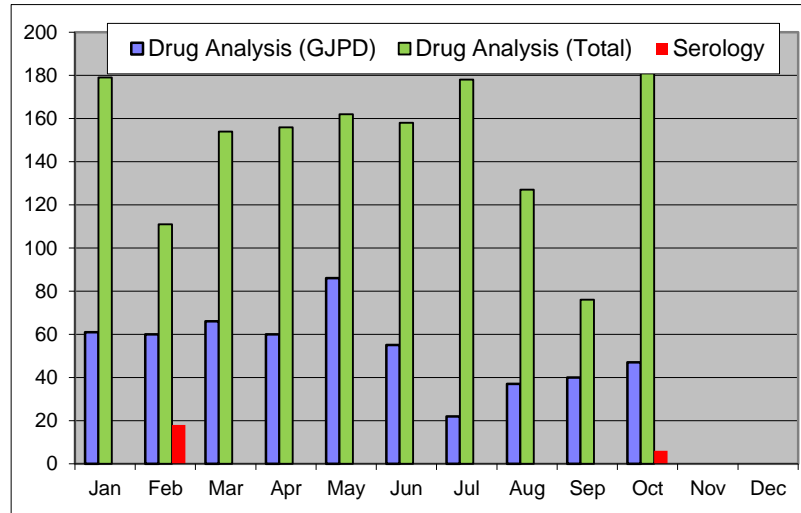
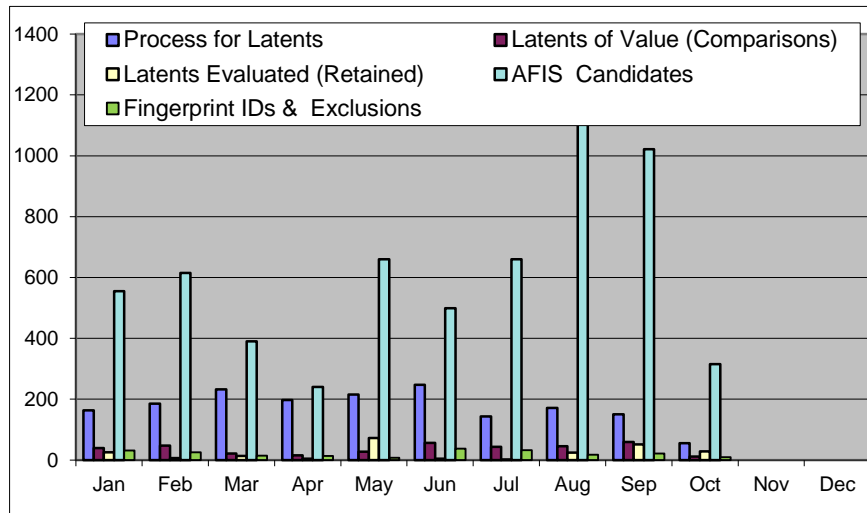
Administrative Citation 18

Summons 4

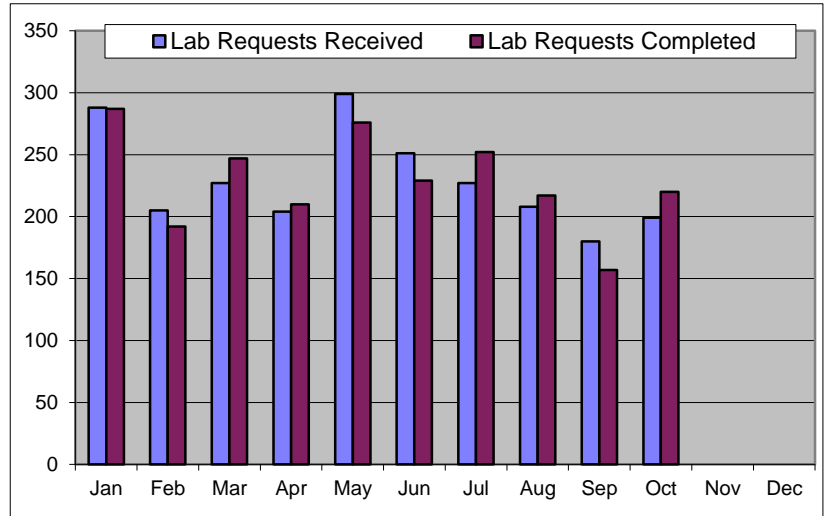
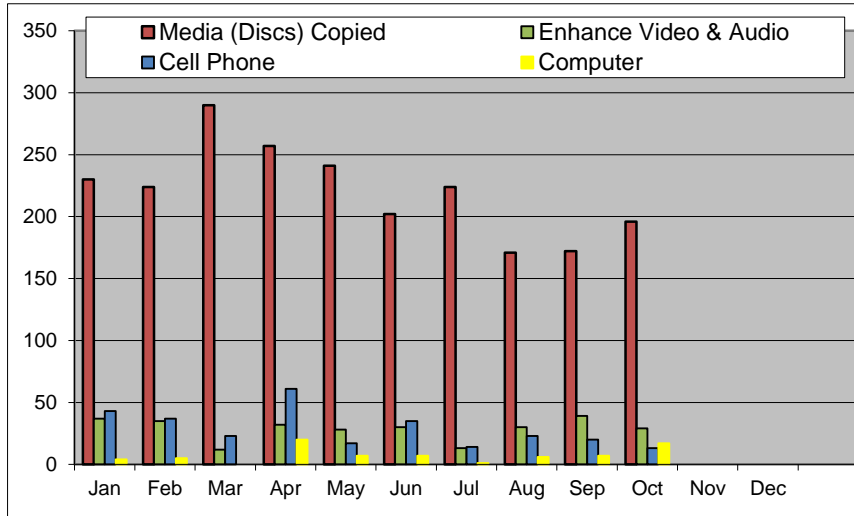
POLICE LABORATORY PRODUCTIVITY DATA - 2018								
	Property Items Received	Items Released	Items Destroyed	Items Auctioned	Items Out	Property Cases Received	Property Cases in Inventory	
Jan	1,952	245	50	0	295	472	48,400	
Feb	1,558	100	60	0	160	433	48,802	
Mar	1,702	147	88	132	367	483	49,252	
Apr	1,765	268	306	0	574	421	49,678	
May	1,614	198	307	0	505	519	50,189	
Jun	1,734	173	53	0	226	527	50,639	
Jul	1,714	153	58	250	461	475	51,121	
Aug	1,620	168	54	0	222	476	51,571	
Sep	1,366	134	72	71	277	452	52,007	
Oct	1,507	138	692	0	830	420	52,351	
Nov					0			
Dec					0			
							(Average)	
Totals	16,532	1724	1740	453	3,917	4678	50,401	



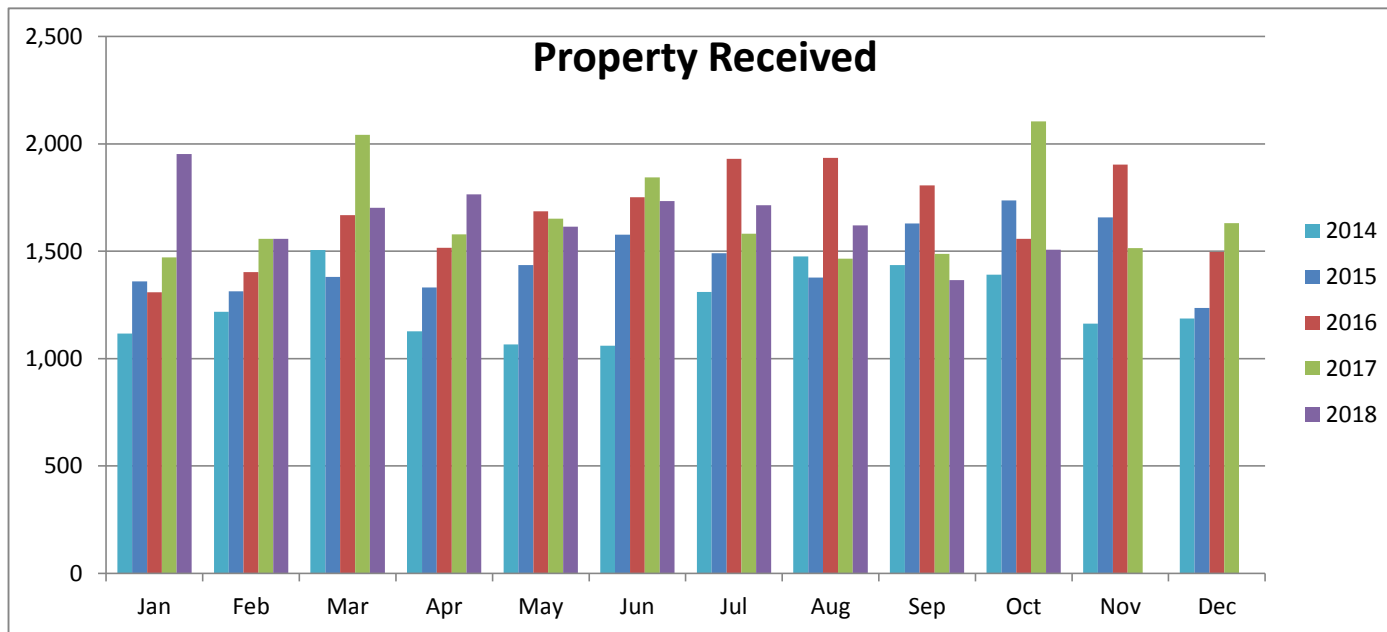
POLICE LABORATORY PRODUCTIVITY DATA - 2018								
	Process for Latents	Latents of Value (Comparisons)	Latents Evaluated (Retained)	AFIS Candidates	Fingerprint IDs & Exclusions	Serology	Drug Analysis (GJPD)	Drug Analysis (Total)
Jan	163	40	26	555	32	0	61	179
Feb	185	48	7	615	26	18	60	111
Mar	232	22	14	390	15	0	66	154
Apr	197	16	5	240	14	0	60	156
May	215	28	73	660	8	0	86	162
Jun	247	57	5	499	38	0	55	158
Jul	144	44	2	660	33	0	22	178
Aug	171	46	25	1155	18	0	37	127
Sep	151	60	52	1022	22	0	40	76
Oct	56	12	29	315	10	6	47	184
Nov								
Dec								
Totals	1761	373	238	6111	216	24	534	1485



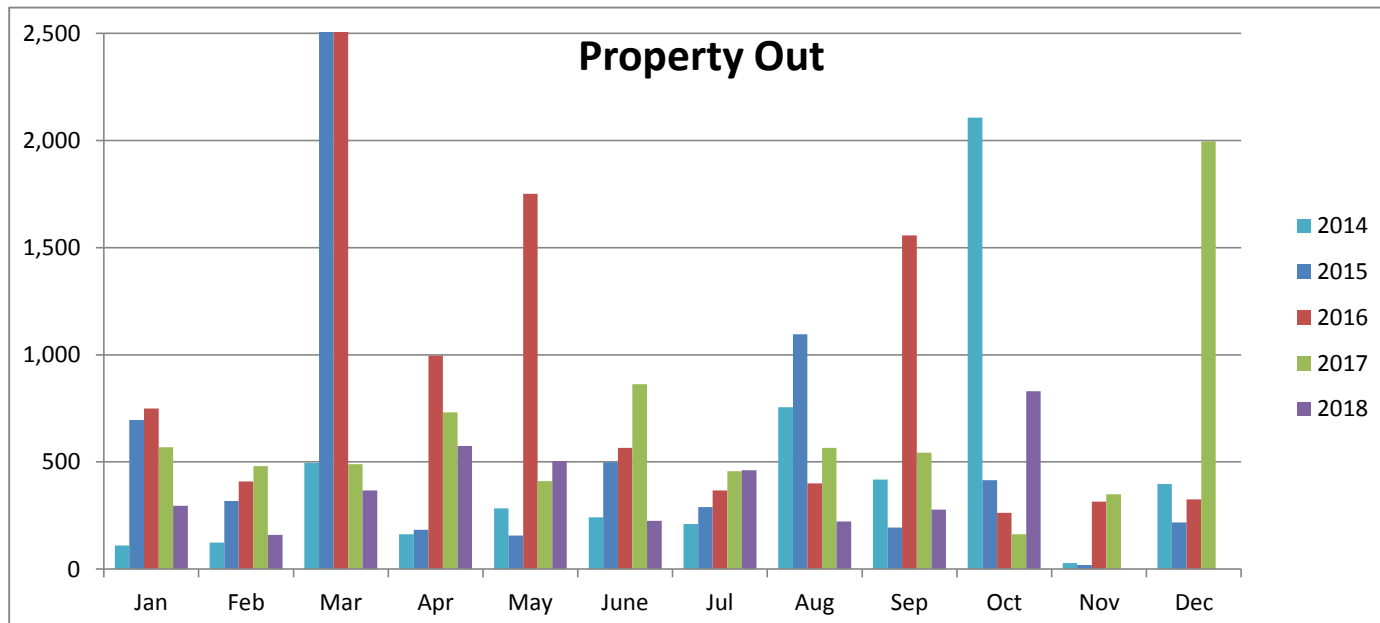
POLICE LABORATORY PRODUCTIVITY DATA - 2018								
	Cell Phone	Computer	Media (Discs) Copied	Enhance Video & Audio	BWC Video	Lab Requests Received	Lab Requests Completed	Average Days to Complete
Jan	43	4	230	37	0	288	287	8
Feb	37	5	224	35	2	205	192	6
Mar	23	0	290	12	4	227	247	5
Apr	61	20	257	32	2	204	210	4
May	17	7	241	28	4	299	276	6
Jun	35	7	202	30	1	251	229	6
Jul	14	1	224	13	0	227	252	4
Aug	23	6	171	30	1	208	217	4
Sep	20	7	172	39	1	180	157	3
Oct	13	17	196	29	0	199	220	2
Nov								
Dec								
Totals	286	74	2207	285	15	2288	2287	5



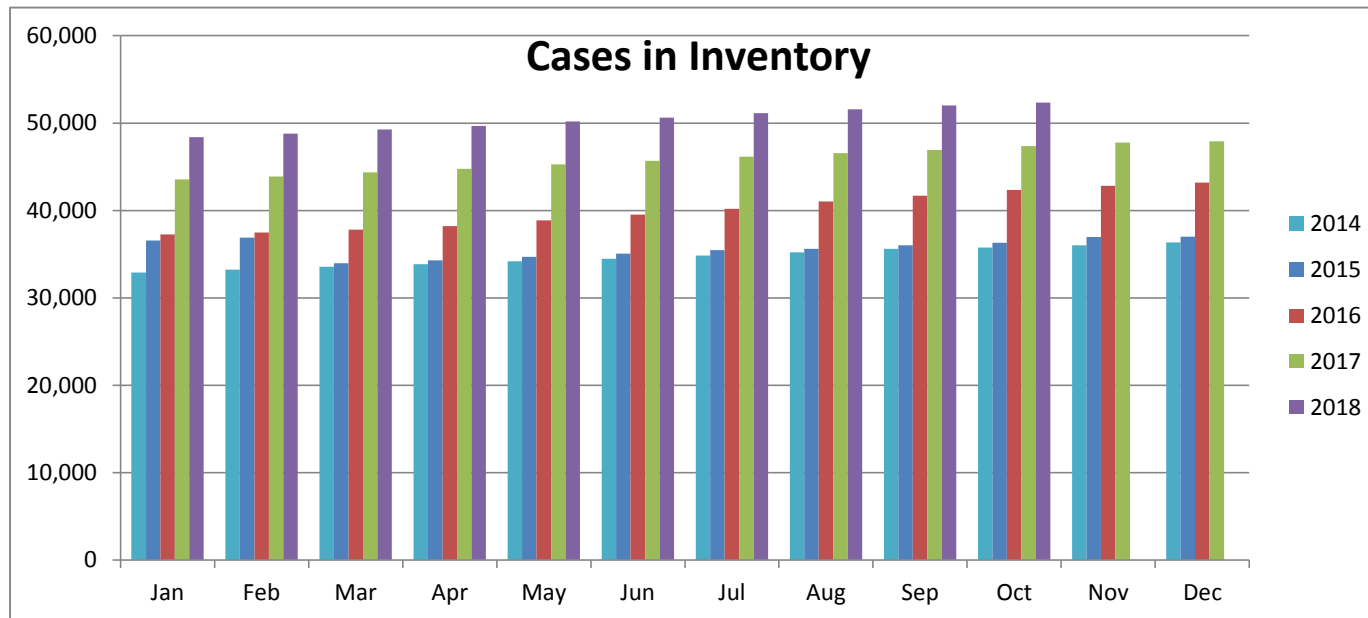
Property Received										
	2014	2015	2016	2017	2018	YTD 14-15	YTD 15-16	YTD 16-17	YTD 17-18	%14-18
Jan	1,116	1,359	1,308	1,471	1,952	22%	-4%	12%	33%	75%
Feb	1,218	1,313	1,402	1,557	1,558	14%	1%	12%	16%	50%
Mar	1,506	1,380	1,668	2,042	1,702	6%	8%	16%	3%	36%
Apr	1,127	1,331	1,516	1,578	1,765	8%	9%	13%	5%	40%
May	1,065	1,436	1,685	1,651	1,614	13%	11%	9%	4%	42%
Jun	1,060	1,577	1,751	1,844	1,734	18%	11%	9%	2%	46%
Jul	1,310	1,490	1,930	1,581	1,714	18%	14%	4%	3%	43%
Aug	1,476	1,377	1,934	1,465	1,620	14%	17%	0%	4%	38%
Sep	1,436	1,629	1,807	1,487	1,366	14%	16%	-2%	2%	33%
Oct	1,391	1,736	1,557	2,104	1,507	15%	13%	1%	-1%	30%
Nov	1,163	1,658	1,903	1,515		17%	13%	-1%		
Dec	1,187	1,235	1,497	1,630		0%	14%	0%		
Total	15,055	17,521	19,958	19,925	16,532	16%	14%	0%	-17%	



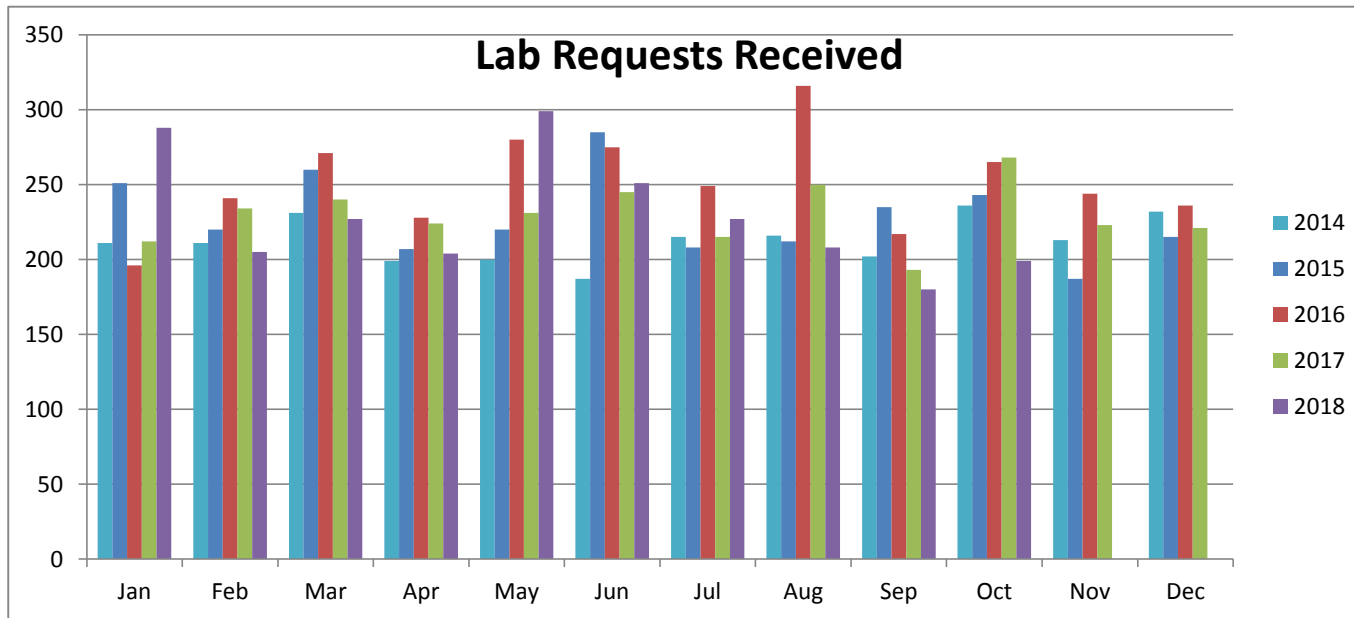
Property Items Out										
	2014	2015	2016	2017	2018	YTD 14-15	YTD 15-16	YTD 16-17	YTD 17-18	%14-18
Jan	111	696	749	568	295	527%	8%	-24%	-48%	166%
Feb	124	318	409	481	160	331%	14%	-9%	-57%	94%
Mar	495	5,851	2,519	490	367	840%	-46%	-58%	-47%	13%
Apr	162	184	995	732	574	690%	-34%	-51%	-39%	57%
May	283	156	1,751	410	505	513%	-11%	-58%	-29%	62%
June	241	499	566	863	226	444%	-9%	-49%	-40%	50%
Jul	210	289	367	457	461	392%	-8%	-46%	-35%	59%
Aug	755	1,096	400	565	222	282%	-15%	-41%	-38%	18%
Sep	418	194	1,557	543	277	232%	0%	-45%	-40%	10%
Oct	2,107	415	263	163	830	98%	-1%	-45%	-26%	-20%
Nov	28	20	315	349		97%	2%	-43%		
Dec	397	218	325	1,996		86%	3%	-25%		
	5,331	9,936	10,216	7,617	3,917	86%	3%	-25%	-49%	



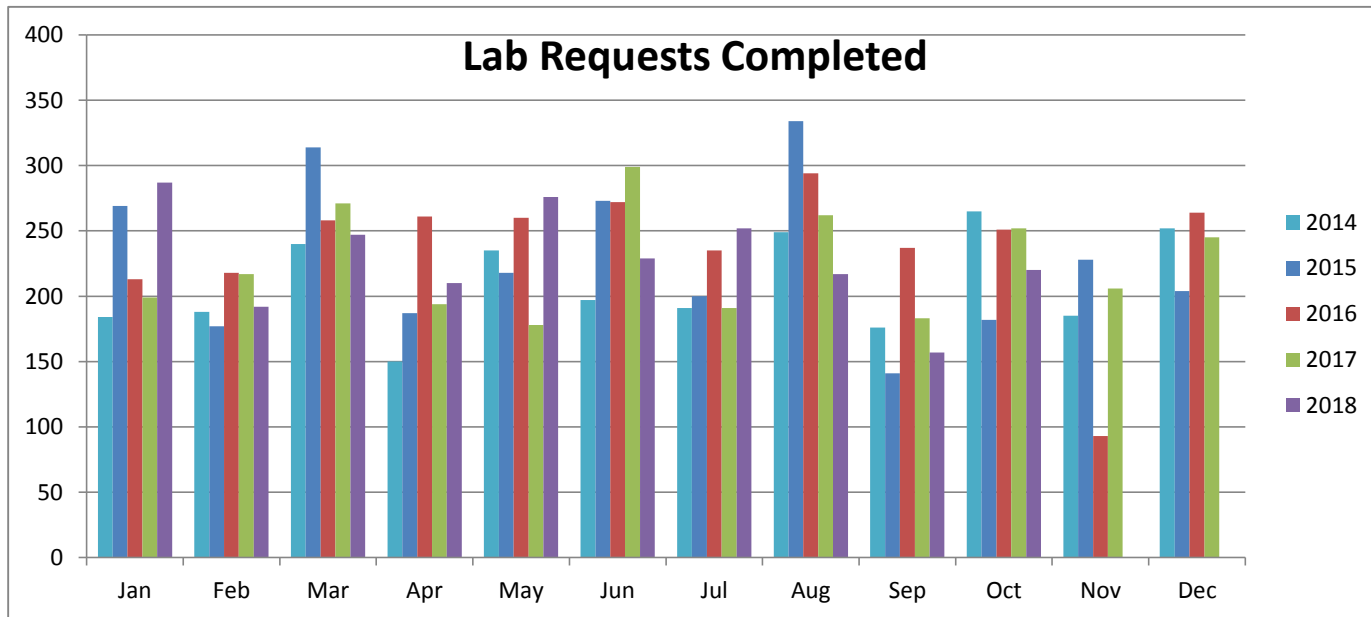
Average Cases In Inventory										
	2014	2015	2016	2017	2018	YTD 14-15	YTD 15-16	YTD 16-17	YTD 17-18	%14-18
Jan	32,915	36,551	37,250	43,547	48,400	11%	2%	17%	11%	47%
Feb	33,242	36,879	37,484	43,897	48,802	11%	2%	17%	11%	47%
Mar	33,566	33,946	37,808	44,351	49,252	1%	11%	17%	11%	47%
Apr	33,841	34,304	38,205	44,752	49,678	1%	11%	17%	11%	47%
May	34,194	34,675	38,873	45,286	50,189	1%	12%	16%	11%	47%
Jun	34,487	35,077	39,527	45,696	50,639	2%	13%	16%	11%	47%
Jul	34,855	35,461	40,169	46,153	51,121	2%	13%	15%	11%	47%
Aug	35,197	35,604	41,012	46,571	51,571	1%	15%	14%	11%	47%
Sep	35,610	36,029	41,682	46,910	52,007	1%	16%	13%	11%	46%
Oct	35,772	36,314	42,344	47,354	52,351	2%	17%	12%	11%	46%
Nov	36,005	36,964	42,833	47,763		3%	16%	12%		
Dec	36,327	37,005	43,200	47,917		2%	17%	11%		
Average	416,011	35,734	40,032	45,850	50,401	-91%	12%	15%	10%	



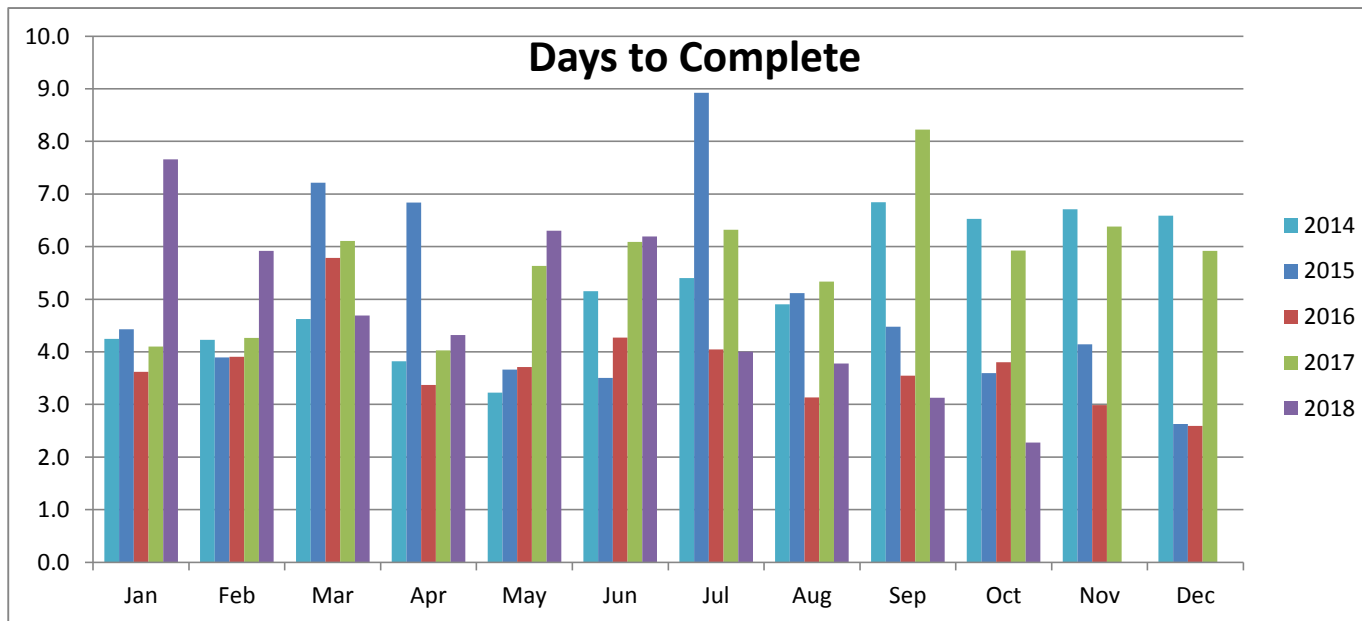
Lab Requests Received										
	2014	2015	2016	2017	2018	YTD 14-15	YTD 15-16	YTD 16-17	YTD 17-18	14-18%
Jan	211	251	196	212	288	19%	-22%	8%	36%	36%
Feb	211	220	241	234	205	12%	-7%	2%	11%	17%
Mar	231	260	271	240	227	12%	-3%	-3%	5%	10%
Apr	199	207	228	224	204	10%	0%	-3%	2%	8%
May	200	220	280	231	299	10%	5%	-6%	7%	16%
Jun	187	285	275	245	251	16%	3%	-7%	6%	19%
Jul	215	208	249	215	227	14%	5%	-8%	6%	17%
Aug	216	212	316	250	208	12%	10%	-10%	3%	14%
Sep	202	235	217	193	180	12%	8%	-10%	2%	12%
Oct	236	243	265	268	199	11%	8%	-9%	-1%	9%
Nov	213	187	244	223		9%	10%	-9%		
Dec	232	215	236	221		7%	10%	-9%		
Total	2,553	2,743	3,018	2,756	2,288	7%	10%	-9%	-17%	



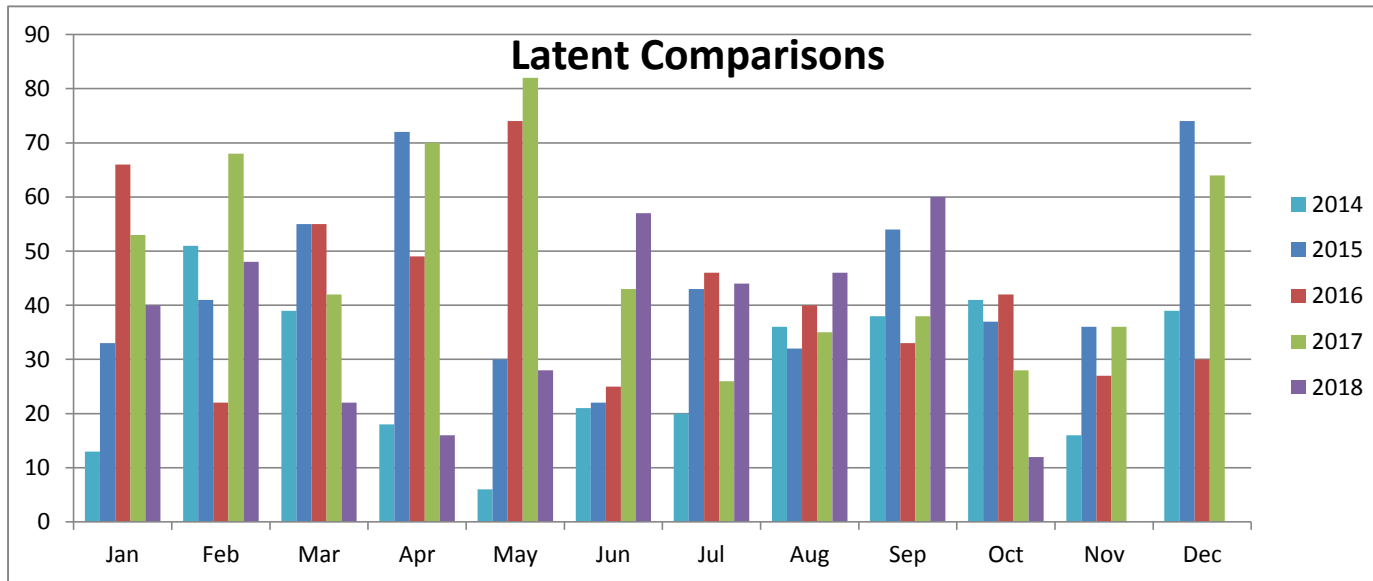
Lab Requests Completed										
	2014	2015	2016	2017	2018	YTD 14-15	YTD 15-16	YTD 16-17	YTD 16-17	%14-18
Jan	184	269	213	199	287	46%	-21%	-7%	44%	56%
Feb	188	177	218	217	192	20%	-3%	-3%	15%	29%
Mar	240	314	258	271	247	24%	-9%	0%	6%	19%
Apr	150	187	261	194	210	24%	0%	-7%	6%	23%
May	235	218	260	178	276	17%	4%	-12%	14%	22%
Jun	197	273	272	299	229	20%	3%	-8%	6%	21%
Jul	191	200	235	191	252	18%	5%	-10%	9%	22%
Aug	249	334	294	262	217	21%	2%	-10%	5%	17%
Sep	176	141	237	183	157	17%	6%	-11%	4%	14%
Oct	265	182	251	252	220	11%	9%	-10%	2%	10%
Nov	185	228	93	206		12%	3%	-5%		
Dec	252	204	264	245		9%	5%	-6%		
Total	2,512	2,727	2,856	2,697	2,287	9%	5%	-6%	-15%	



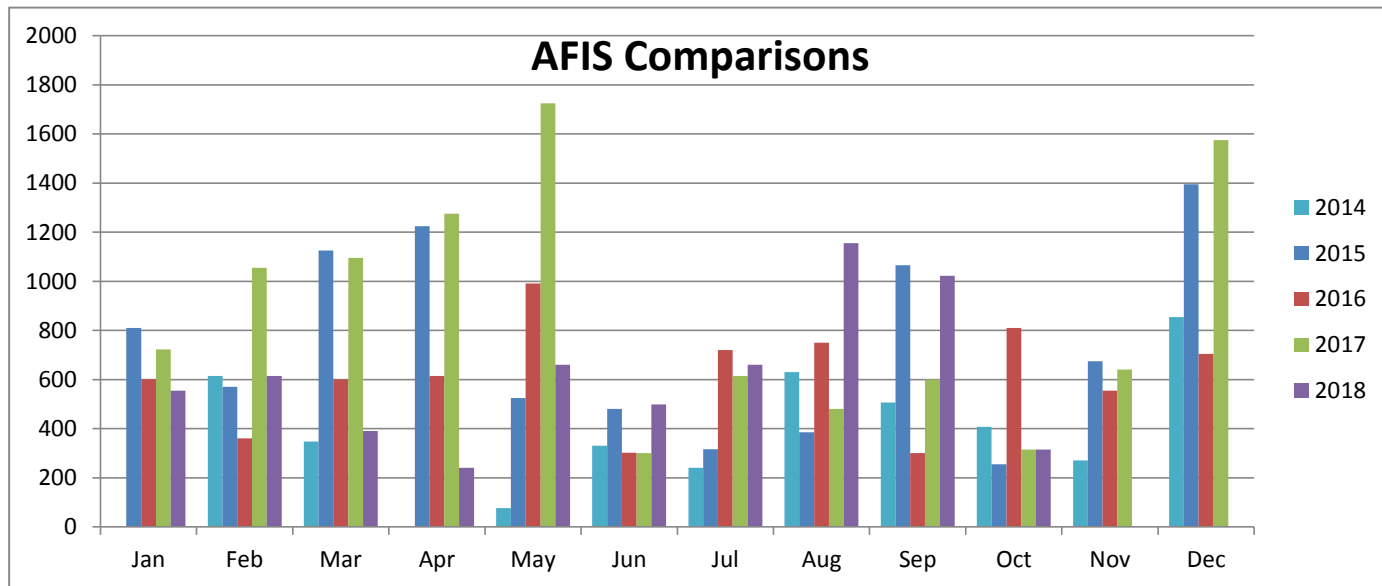
Lab Requests: Average Days to Complete										
	2014	2015	2016	2017	2018	YTD 14-15	YTD 15-16	YTD 16-17	YTD 17-18	%14-18
Jan	4.2	4.4	3.6	4.1	7.7	-3%	-18%	13%	87%	80%
Feb	4.2	3.9	3.9	4.3	5.9	-2%	-10%	11%	62%	60%
Mar	4.6	7.2	5.8	6.1	4.7	19%	-14%	9%	26%	40%
Apr	3.8	6.8	3.4	4.0	4.3	32%	-25%	11%	22%	34%
May	3.2	3.7	3.7	5.6	6.3	29%	-22%	18%	20%	43%
Jun	5.2	3.5	4.3	6.1	6.2	17%	-17%	23%	16%	39%
Jul	5.4	8.9	4.0	6.3	4.0	25%	-25%	27%	7%	27%
Aug	4.9	5.1	3.1	5.3	3.8	22%	-27%	32%	2%	20%
Sep	6.8	4.5	3.5	8.2	3.1	13%	-26%	42%	-8%	8%
Oct	6.5	3.6	3.8	5.9	2.3	5%	-24%	43%	-14%	-1%
Nov	6.7	4.1	3.0	6.4		0%	-24%	48%		
Dec	6.6	2.6	2.6	5.9		-6%	-23%	53%		
Average	5	5	4	6	5	-6%	-23%	53%	-15%	



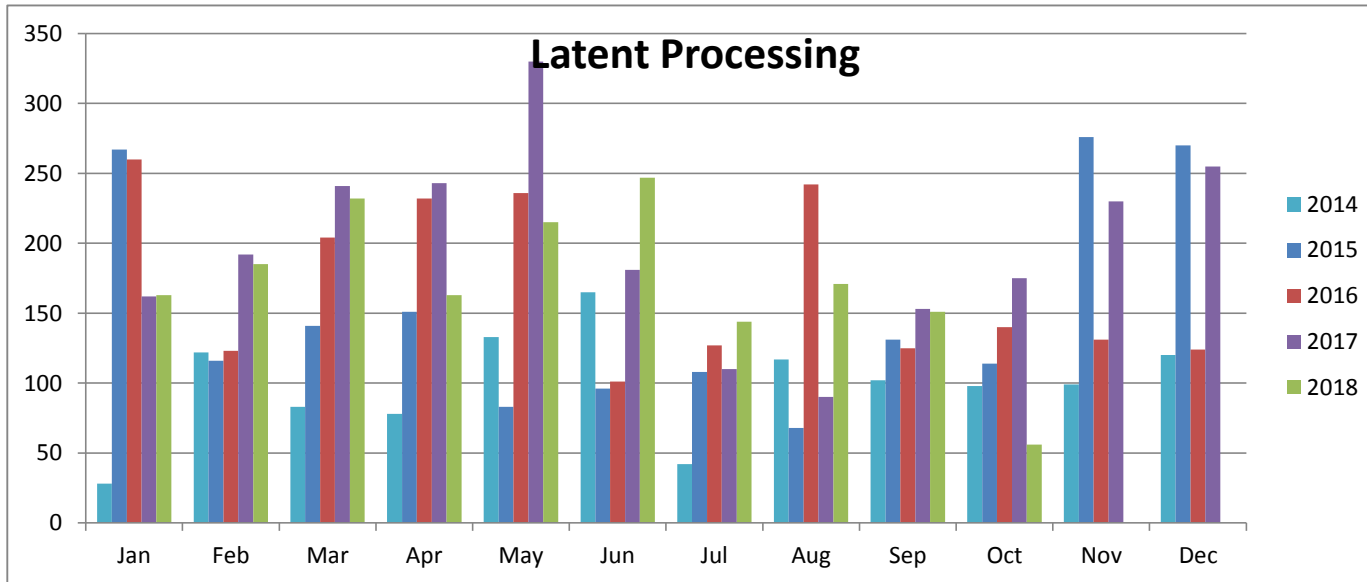
Latent Comparisons										
	2014	2015	2016	2017	2018	YTD 14-15	YTD 15-16	YTD 16-17	YTD 17-18	%14-18
Jan	13	33	66	53	40	154%	100%	-20%	-25%	208%
Feb	51	41	22	68	48	16%	19%	38%	-27%	38%
Mar	39	55	55	42	22	25%	11%	14%	-33%	7%
Apr	18	72	49	70	16	66%	-4%	21%	-46%	4%
May	6	30	74	82	28	82%	15%	18%	-51%	21%
Jun	21	22	25	43	57	71%	15%	23%	-41%	43%
Jul	20	43	46	26	44	76%	14%	14%	-34%	52%
Aug	36	32	40	35	46	61%	15%	11%	-28%	48%
Sep	38	54	33	38	60	58%	7%	11%	-21%	49%
Oct	41	37	42	28	12	48%	8%	7%	-23%	32%
Nov	16	36	27	36		52%	5%	9%		
Dec	39	74	30	64		57%	-4%	15%		
Total	338	529	509	585	373	57%	-4%	15%	-36%	



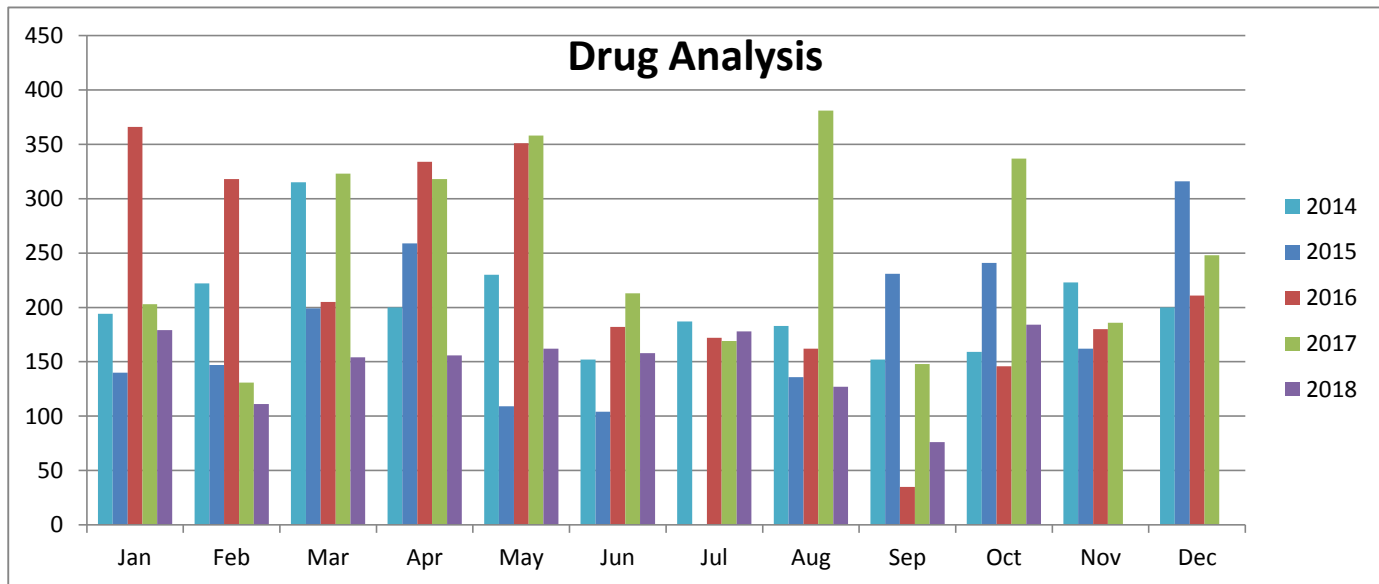
AFIS Comparisons										
	2014	2015	2016	2017	2018	YTD 14-15	YTD 15-16	YTD 16-17	YTD 17-18	%14-18
Jan	0	810	602	723	555	#N/A	-26%	20%	-23%	#N/A
Feb	615	570	360	1055	615	124%	-30%	85%	-34%	90%
Mar	348	1125	600	1095	390	160%	-38%	84%	-46%	62%
Apr	0	1225	615	1275	240	287%	-42%	91%	-57%	87%
May	76	525	991	1725	660	310%	-26%	85%	-58%	137%
Jun	330	480	302	300	499	246%	-27%	78%	-52%	116%
Jul	241	316	720	615	660	214%	-17%	62%	-47%	125%
Aug	630	385	750	480	1155	143%	-9%	47%	-34%	113%
Sep	507	1066	300	600	1022	137%	-19%	50%	-26%	111%
Oct	408	255	810	315	315	114%	-10%	35%	-25%	94%
Nov	271	675	555	641		117%	-11%	34%		
Dec	855	1395	705	1575		106%	-17%	42%		
Total	4281	8827	7310	10,399	6,111	106%	-17%	-16%	-41%	



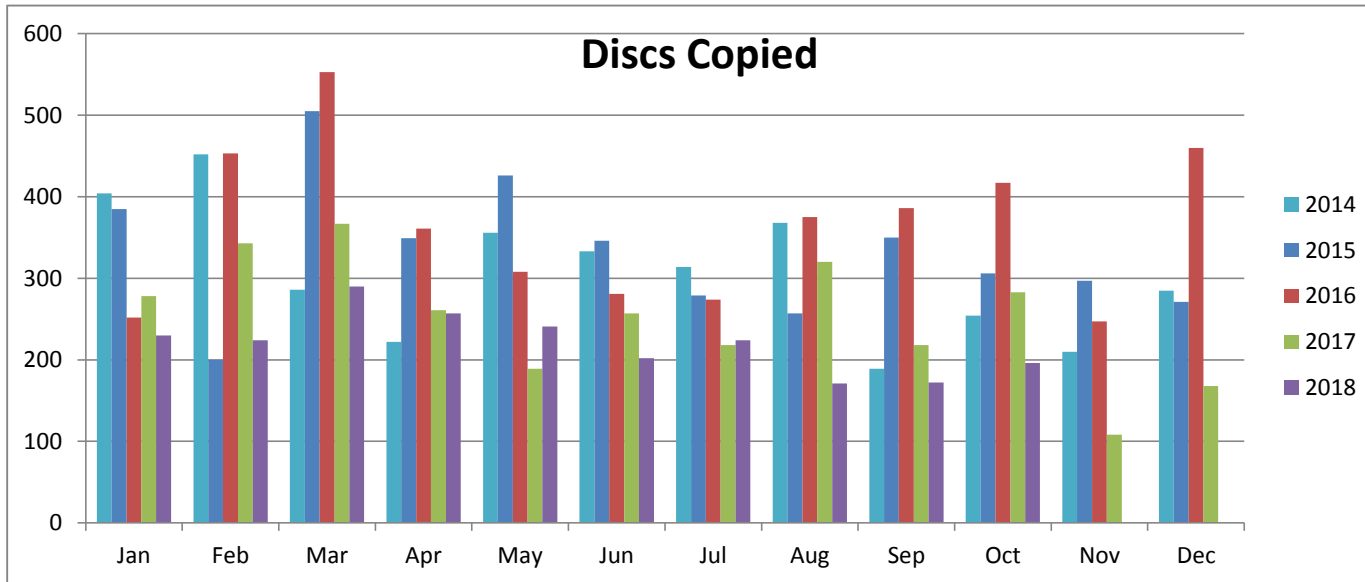
Process for Latents										
	2014	2015	2016	2017	2018	YTD 14-15	YTD 15-16	YTD 16-17	YTD 17-18	%14-18
Jan	28	267	260	162	163	854%	-3%	-38%	1%	482%
Feb	122	116	123	192	185	155%	0%	-8%	-2%	132%
Mar	83	141	204	241	232	125%	12%	1%	-3%	149%
Apr	78	151	232	243	163	117%	21%	2%	-11%	139%
May	133	83	236	330	215	71%	39%	11%	-18%	116%
Jun	165	96	101	181	247	40%	35%	17%	-11%	98%
Jul	42	108	127	110	144	48%	33%	14%	-8%	107%
Aug	117	68	242	90	171	34%	48%	2%	-2%	98%
Sep	102	131	125	153	151	33%	42%	3%	-2%	92%
Oct	98	114	140	175	56	32%	40%	5%	-8%	78%
Nov	99	276	131	230		45%	24%	10%		
Dec	120	270	124	255		53%	12%	16%		
Total	1,187	1,821	2,045	2,362	1727	53%	12%	16%	-27%	



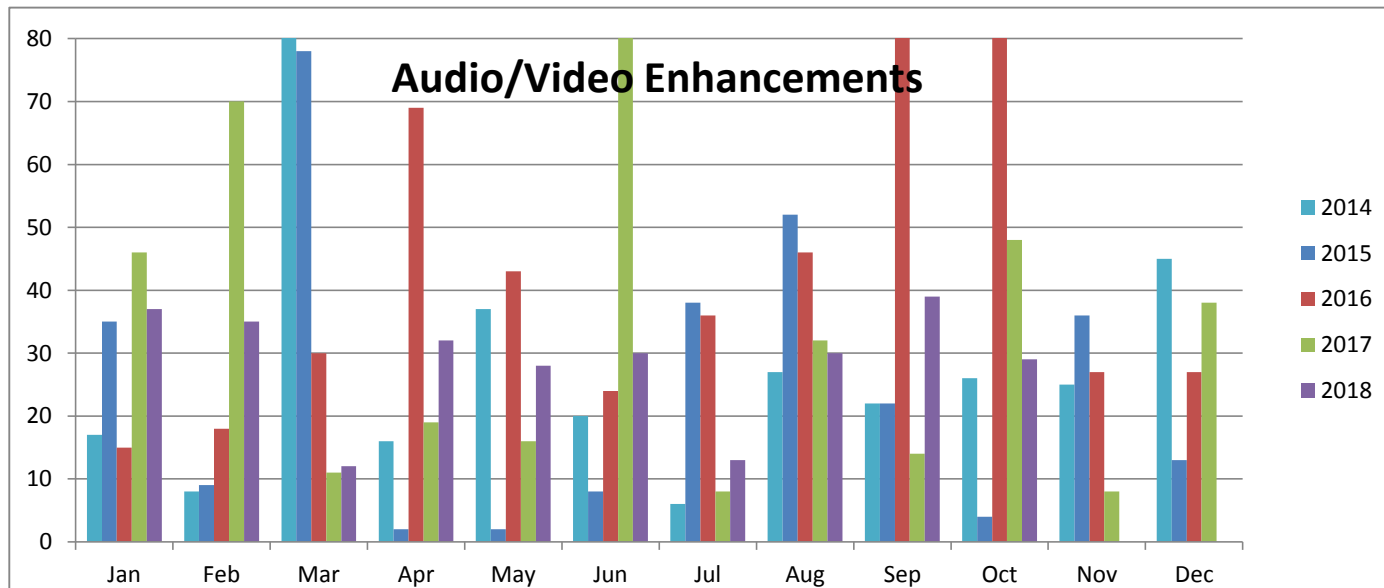
Drug Analysis										
	2014	2015	2016	2017	2018	YTD 14-15	YTD 15-16	YTD 16-17	YTD 17-18	%14-18
Jan	194	140	366	203	179	-28%	161%	-45%	-12%	-8%
Feb	222	147	318	131	111	-31%	138%	-51%	-13%	-30%
Mar	315	199	205	323	154	-34%	83%	-26%	-32%	-39%
Apr	200	259	334	318	156	-20%	64%	-20%	-38%	-36%
May	230	109	351	358	162	-26%	84%	-15%	-43%	-34%
Jun	152	104	182	213	158	-27%	83%	-12%	-40%	-30%
Jul	187	0	172	169	178	-36%	101%	-11%	-36%	-27%
Aug	183	136	162	381	127	-35%	91%	0%	-42%	-27%
Sep	152	231	35	148	76	-28%	60%	6%	-42%	-29%
Oct	159	241	146	337	184	-21%	45%	14%	-42%	-26%
Nov	223	162	180	186		-22%	42%	13%		
Dec	200	316	211	248		-15%	30%	13%		
Total	2,417	2,044	2,662	3,015	1,485	-15%	30%	-44%	-51%	



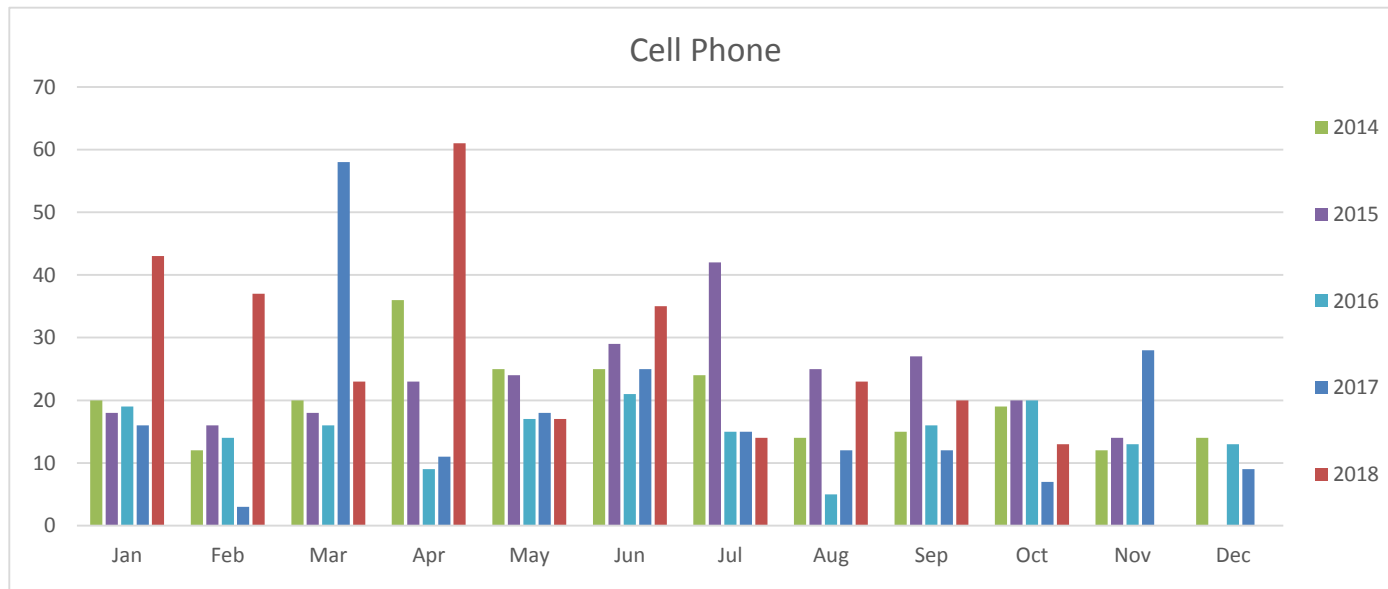
Media Discs Copied										
	2014	2015	2016	2017	2018	YTD 14-15	YTD 15-16	YTD 16-17	YTD 17-18	% 14-18
Jan	404	385	252	278	230	-5%	-35%	10%	-17%	-43%
Feb	452	200	453	343	224	-32%	21%	-12%	-27%	-47%
Mar	286	505	553	367	290	-5%	15%	-21%	-25%	-35%
Apr	222	349	361	261	257	5%	13%	-23%	-20%	-27%
May	356	426	308	189	241	8%	3%	-25%	-14%	-28%
Jun	333	346	281	257	202	8%	0%	-23%	-15%	-30%
Jul	314	279	274	218	224	5%	0%	-23%	-13%	-30%
Aug	368	257	375	320	171	0%	4%	-22%	-18%	-33%
Sep	189	350	386	218	172	6%	5%	-24%	-18%	-31%
Oct	254	306	417	283	196	7%	8%	-25%	-19%	-31%
Nov	210	297	247	108		9%	6%	-27%		
Dec	285	271	460	168		8%	10%	-31%		
Total	3,673	3,971	4,367	3,010	2,207	8%	10%	-31%	-27%	



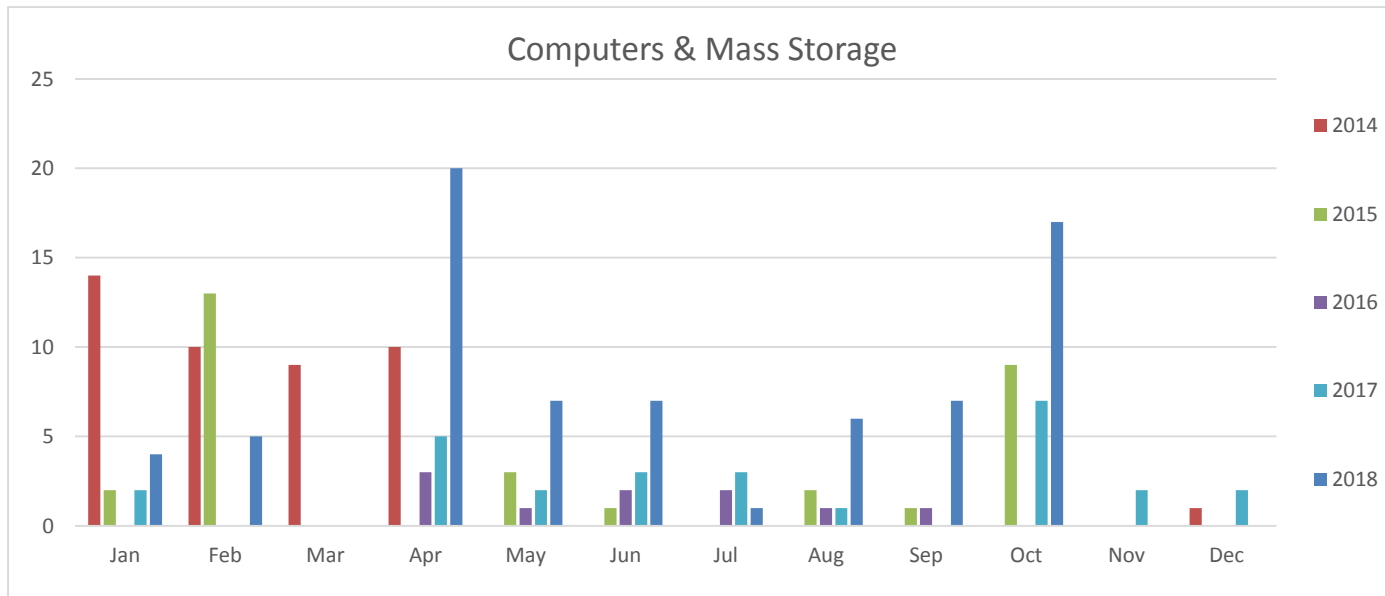
Audio / Video Enhancements										
	2014	2015	2016	2017	2018	YTD 14-15	YTD 15-16	YTD 16-17	YTD 17-18	%14-18
Jan	17	35	15	46	37	106%	-57%	207%	-20%	118%
Feb	8	9	18	70	35	76%	-25%	252%	-38%	188%
Mar	277	78	30	11	12	-60%	-48%	102%	-34%	-72%
Apr	16	2	69	19	32	-61%	6%	11%	-21%	-64%
May	37	2	43	16	28	-65%	39%	-7%	-11%	-59%
Jun	20	8	24	143	30	-64%	49%	53%	-43%	-54%
Jul	6	38	36	8	13	-55%	37%	33%	-40%	-51%
Aug	27	52	46	32	30	-45%	25%	23%	-37%	-47%
Sep	22	22	127	14	39	-43%	66%	-12%	-29%	-40%
Oct	26	4	98	48	29	-45%	102%	-20%	-30%	-38%
Nov	25	36	27	8		-41%	86%	-22%		
Dec	45	13	27	38		-43%	87%	-19%		
Total	526	299	560	453	285	-43%	87%	-19%	-37%	



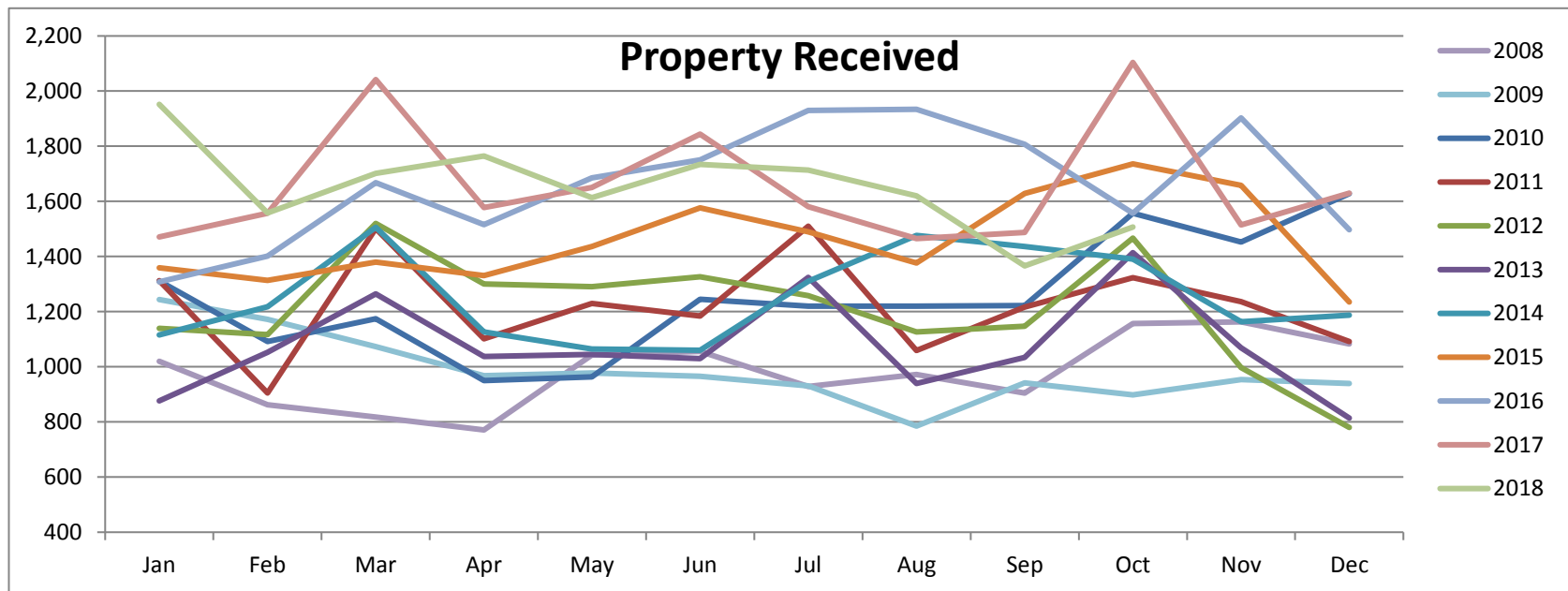
Cell Phone Forensics										
	2014	2015	2016	2017	2018	YTD 14-15	YTD 15-16	YTD 16-17	YTD 17-18	%14-18
Jan	20	18	19	16	43	-10%	6%	-16%	169%	115%
Feb	12	16	14	3	37	6%	-3%	-42%	321%	150%
Mar	20	18	16	58	23	0%	-6%	57%	34%	98%
Apr	36	23	9	11	61	-15%	-23%	52%	86%	86%
May	25	24	17	18	17	-12%	-24%	41%	71%	60%
Jun	25	29	21	25	35	-7%	-25%	36%	65%	57%
Jul	24	42	15	15	14	5%	-35%	32%	58%	42%
Aug	14	25	5	12	23	11%	-41%	36%	60%	44%
Sep	15	27	16	12	20	16%	-41%	29%	61%	43%
Oct	19	20	20	7	13	15%	-37%	16%	62%	36%
Nov	12	14	13	28		15%	-36%	24%		
Dec	14	0	13	9		8%	-30%	20%		
Total	236	256	178	214	286	8%	-30%	20%	34%	



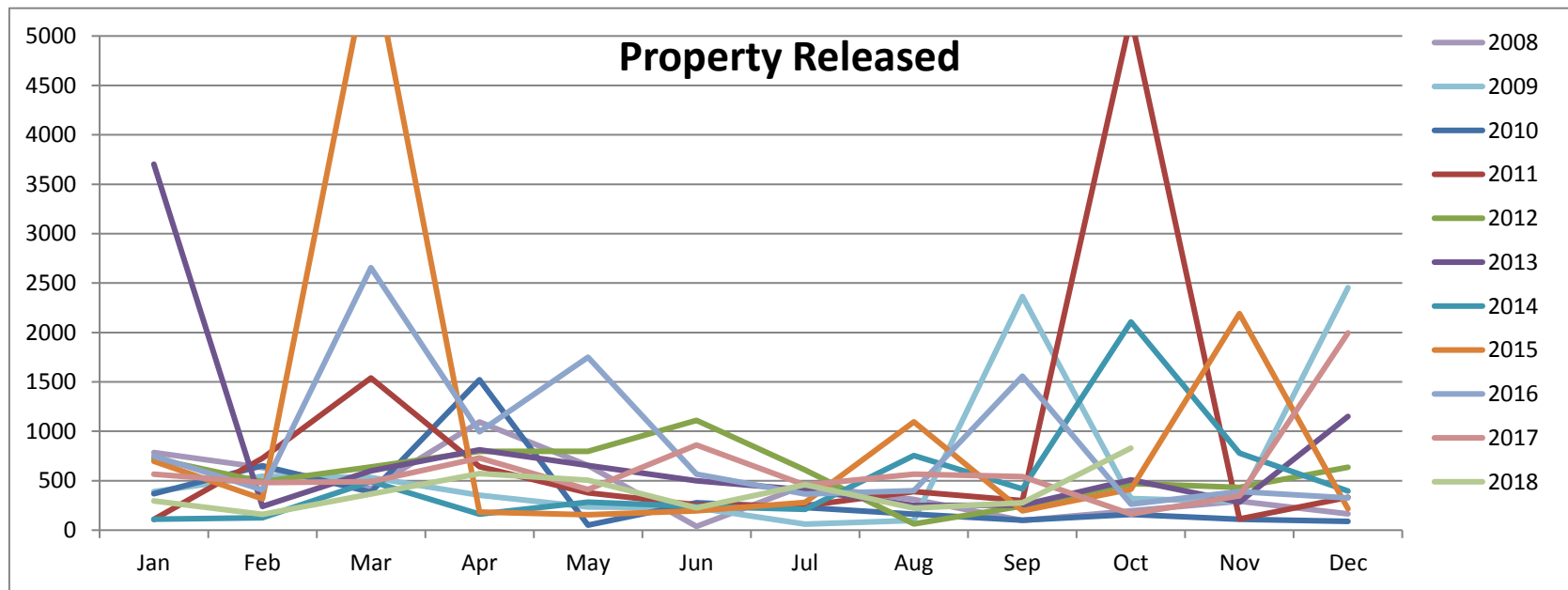
Computer Forensics										
	2014	2015	2016	2017	2018	YTD 14-15	YTD 15-16	YTD 16-17	YTD 17-18	%14-18
Jan	14	2	0	2	4	-86%	-100%	#N/A	100%	-71%
Feb	10	13	0	0	5	-38%	-100%	#N/A	350%	-63%
Mar	9	0	0	0	0	-55%	-100%	#N/A	350%	-73%
Apr	10	0	3	5	20	-65%	-80%	133%	314%	-33%
May	0	3	1	2	7	-58%	-78%	125%	300%	-16%
Jun	0	1	2	3	7	-56%	-68%	100%	258%	0%
Jul	0	0	2	3	1	-56%	-58%	88%	193%	2%
Aug	0	2	1	1	6	-51%	-57%	78%	213%	16%
Sep	0	1	1	0	7	-49%	-55%	60%	256%	33%
Oct	0	9	0	7	17	-28%	-68%	130%	222%	72%
Nov	0	0	0	2		-28%	-68%	150%		
Dec	1	0	0	2		-30%	-68%	170%		
Total	44	31	10	27	74	-30%	-68%	170%	174%	



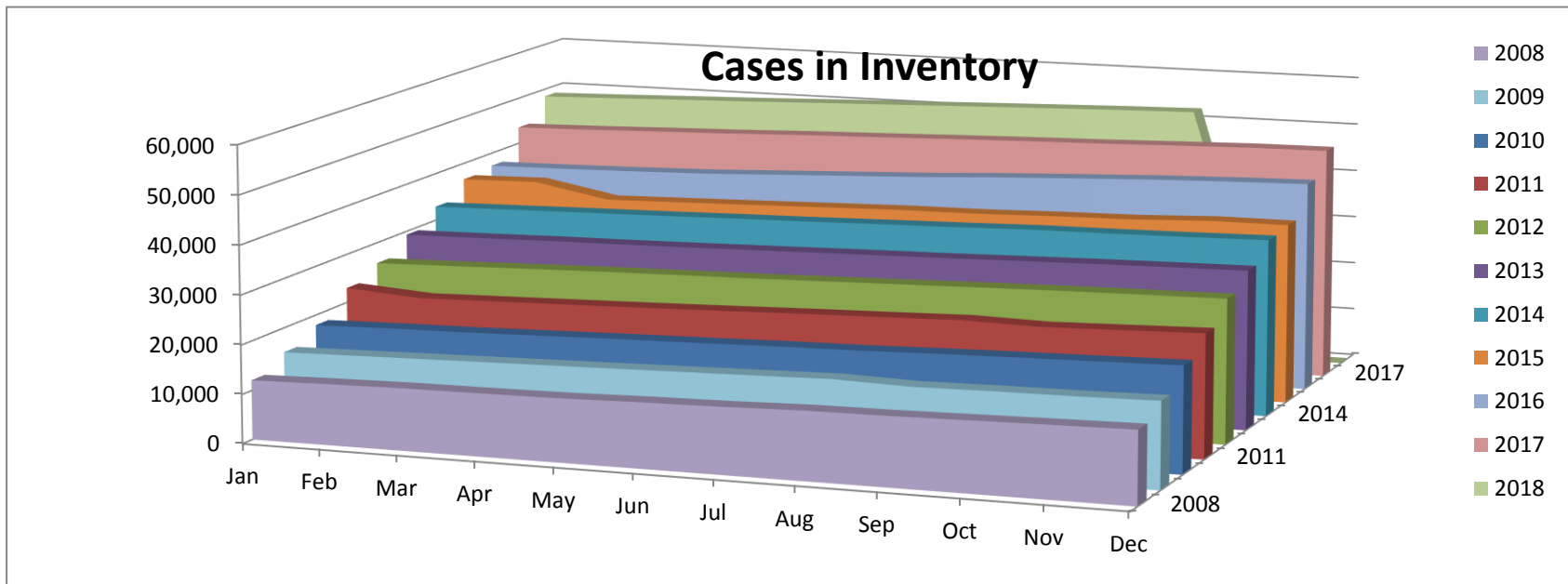
Property Received (By Item)												
	2008	2009	2010	2011	2012	2013	2014	2015	2016	2017	2018	%08-18
Jan	1,020	1,244	1,311	1,312	1,140	876	1,116	1,359	1,308	1,471	1,952	91%
Feb	862	1,172	1,092	905	1,117	1,053	1,218	1,313	1,402	1,557	1,558	87%
Mar	818	1,073	1,174	1,502	1,520	1,265	1,506	1,380	1,668	2,042	1,702	93%
Apr	771	968	950	1,101	1,300	1,037	1,127	1,331	1,516	1,578	1,765	101%
May	1043	977	963	1,230	1,291	1,045	1,065	1,436	1,685	1,651	1,614	90%
Jun	1056	966	1,245	1,184	1,327	1,030	1,060	1,577	1,751	1,844	1,734	85%
Jul	929	931	1,220	1,510	1,258	1,324	1,310	1,490	1,930	1,581	1,714	85%
Aug	972	785	1,220	1,059	1,126	940	1,476	1,377	1,934	1,465	1,620	83%
Sep	905	942	1,222	1,217	1,147	1,034	1,436	1,629	1,807	1,487	1,366	79%
Oct	1157	898	1,557	1,323	1,467	1,414	1,391	1,736	1,557	2,104	1,507	73%
Nov	1,163	954	1,453	1,236	997	1,069	1,163	1,658	1,903	1,515		
Dec	1083	940	1,628	1,092	780	814	1,187	1,235	1,497	1,630		
Total	11,779	11,850	15,035	14,671	14,470	12,901	15,055	17,521	19,958	19,925	16,532	



Property Out (by Item)												
	2008	2009	2010	2011	2012	2013	2014	2015	2016	2017	2018	%08-18
Jan	785	389	368	109	726	3,703	111	696	749	568	295	-62%
Feb	632	544	652	727	489	240	124	318	409	481	160	-68%
Mar	421	533	383	1,541	638	600	495	5,851	2,656	490	367	-55%
Apr	1095	353	1,522	642	798	812	162	184	995	732	574	-52%
May	654	235	51	377	799	654	283	156	1,751	410	505	-47%
Jun	38	227	277	256	1,111	499	241	195	566	863	226	-41%
Jul	454	61	228	247	608	408	210	281	367	457	461	-37%
Aug	310	98	162	391	63	251	755	1,096	400	565	222	-36%
Sep	99	2,364	102	299	245	252	418	194	1,557	543	277	-31%
Oct	194	319	160	5,188	471	509	2,107	415	263	163	830	-16%
Nov	293	288	111	114	432	284	779	2,192	391	349		
Dec	165	2,453	89	331	635	1,152	397	218	325	1,996		
Total	5,140	7,864	4,105	10,222	7,015	9,364	6,082	11,796	10,429	7,617	3,917	

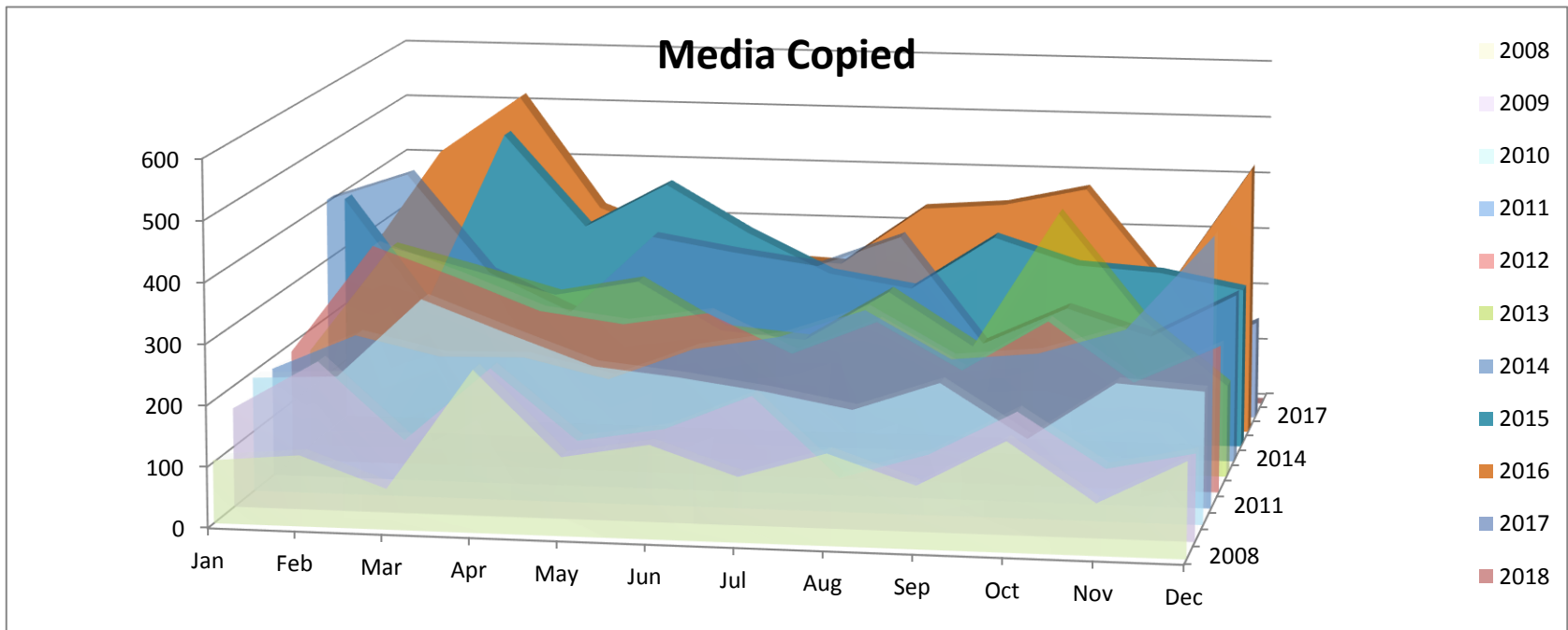


Cases in Inventory (Average)												
	2008	2009	2010	2011	2012	2013	2014	2015	2016	2017	2018	% 08-18
Jan	12,095	15,064	17,935	23,021	25,723	29,292	32,915	36,551	37,250	43,547	48,400	300%
Feb	12,419	15,384	18,298	21,934	26,111	29,545	33,242	36,879	37,484	43,897	48,802	293%
Mar	12,678	15,708	18,538	22,292	26,549	29,870	33,566	33,946	37,808	44,351	49,252	288%
Apr	12,761	16,025	18,932	22,640	26,947	30,073	33,841	34,304	38,205	44,752	49,678	289%
May	12,917	16,324	19,314	23,021	27,256	30,360	34,194	34,675	38,873	45,286	50,189	289%
Jun	13,288	16,665	19,634	23,438	27,530	30,691	34,487	35,077	39,527	45,696	50,639	281%
Jul	13,541	16,983	20,011	23,905	27,910	31,032	34,855	35,461	40,169	46,153	51,121	278%
Aug	13,962	17,354	20,278	24,289	28,290	31,314	35,197	35,604	41,012	46,571	51,571	269%
Sep	14,078	16,910	20,706	24,725	28,679	31,694	35,610	36,029	41,682	46,910	52,007	269%
Oct	14,351	17,167	21,054	24,409	29,030	32,050	35,772	36,314	42,344	47,354	52,351	265%
Nov	14,616	17,279	21,356	24,847	29,300	32,346	36,005	36,964	42,833	47,763		
Dec	14,866	17,566	21,674	25,296	29,517	32,591	36,327	37,005	43,200	47,917		
Average	13,464	16,536	19,811	23,651	27,737	30,905	34,668	35,734	40,032	45,850	50,401	274%



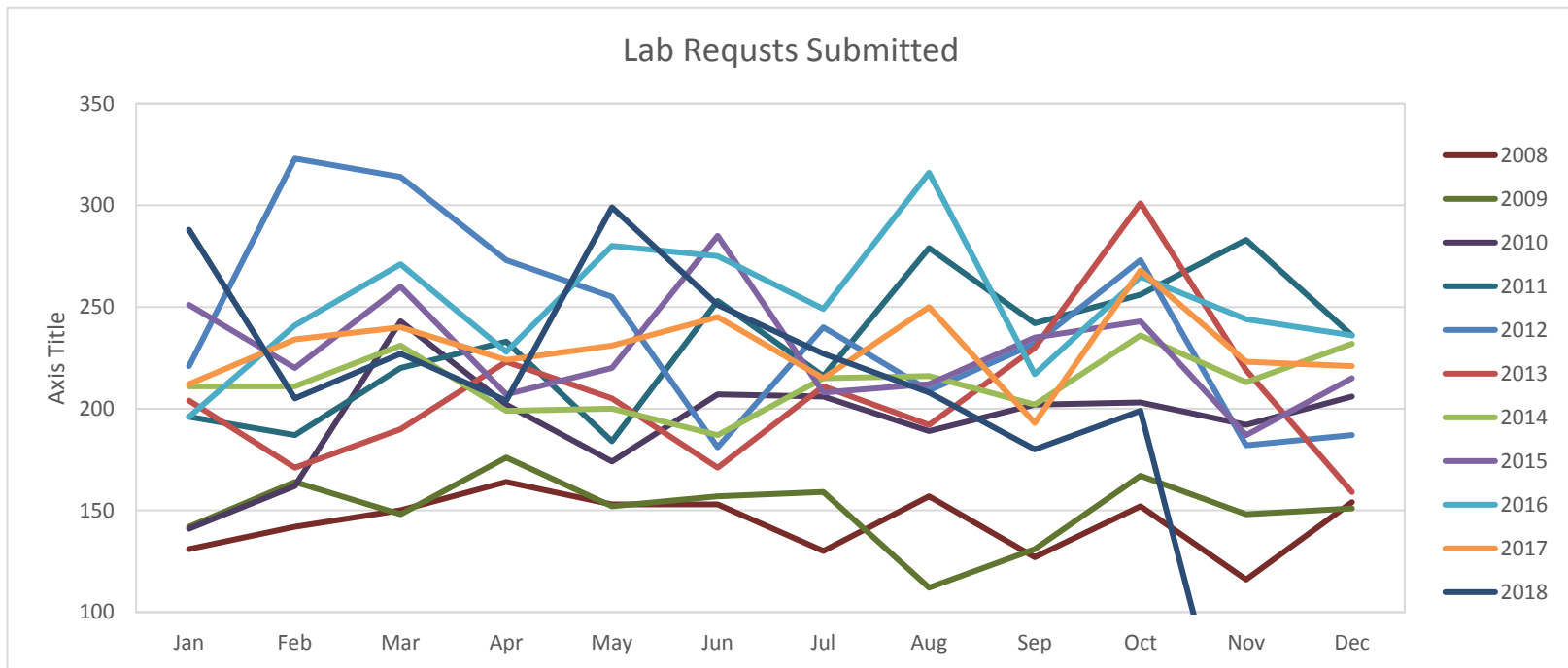
10 Yr. 2008-2018
 Lab / Evidence Productivity Report for October 2018

Media (Tapes, CD, DVD) Copied												
	2008	2009	2010	2011	2012	2013	2014	2015	2016	2017	2018	%08-18
Jan	104	164	190	181	186	164	404	385	252	278	230	121%
Feb	117	246	197	242	371	347	452	200	453	343	224	105%
Mar	67	121	330	211	322	312	286	505	553	367	290	158%
Apr	266	244	278	214	269	274	222	349	361	261	257	81%
May	129	130	228	182	251	301	356	426	308	189	241	82%
Jun	154	154	214	237	274	222	333	346	281	257	202	73%
Jul	107	213	195	262	210	210	314	279	274	218	224	77%
Aug	150	84	170	311	268	296	368	257	375	320	171	68%
Sep	103	127	219	234	191	208	189	350	386	218	172	68%
Oct	180	202	132	248	278	437	254	306	417	283	196	60%
Nov	85	114	228	292	180	264	210	297	247	108		
Dec	158	144	219	451	246	154	285	271	460	168		
Total	1620	1943	2600	3065	3046	3189	3673	3971	4367	3010	2207	

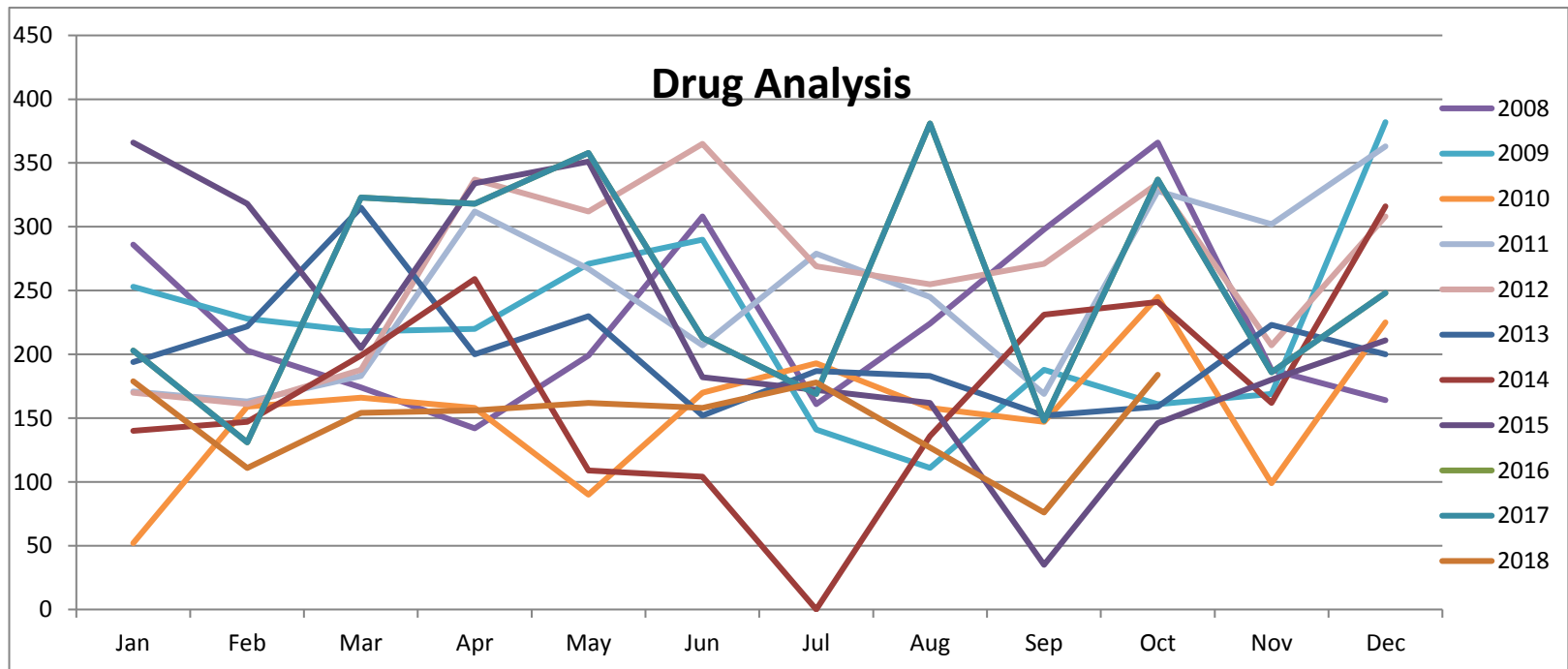


10 Yr. 2008-2018
 Lab / Evidence Productivity Report for October 2018

Lab Requets Submitted												
	2008	2009	2010	2011	2012	2013	2014	2015	2016	2017	2018	%08-18
Jan	131	142	141	196	221	204	211	251	196	212	288	120%
Feb	142	164	162	187	323	171	211	220	241	234	205	81%
Mar	150	148	243	220	314	190	231	260	271	240	227	70%
Apr	164	176	202	233	273	223	199	207	228	224	204	57%
May	153	152	174	184	255	205	200	220	280	231	299	65%
Jun	153	157	207	253	181	171	187	285	275	245	251	65%
Jul	130	159	206	216	240	211	215	208	249	215	227	66%
Aug	157	112	189	279	209	192	216	212	316	250	208	62%
Sep	127	131	202	242	232	230	202	235	217	193	180	60%
Oct	152	167	203	256	273	301	236	243	265	268	199	57%
Nov	116	148	192	283	182	219	213	187	244	223		
Dec	154	151	206	236	187	159	232	215	236	221		
Total	1729	1807	2327	2785	2890	2476	2553	2743	3018	2756	2288	



DRUG ANALYSIS												
	2008	2009	2010	2011	2012	2013	2014	2015	2016	2017	2018	% 08-18
Jan	286	253	52	171	170	201	194	140	366	203	179	-37%
Feb	203	228	159	163	161	160	222	147	318	131	111	-41%
Mar	174	218	166	183	188	300	315	199	205	323	154	-33%
Apr	142	220	158	312	337	209	200	259	334	318	156	-25%
May	199	271	90	267	312	199	230	109	351	358	162	-24%
Jun	308	290	170	207	365	397	152	104	182	213	158	-30%
Jul	161	141	193	279	269	222	187	0	172	169	178	-25%
Aug	224	111	158	245	255	222	183	136	162	381	127	-28%
Sep	298	188	147	169	271	208	152	231	35	148	76	-35%
Oct	366	161	245	328	334	388	159	241	146	337	184	-37%
Nov	188	169	99	302	207	184	223	162	180	186		
Dec	164	382	225	363	308	246	200	316	211	248		
Total	2713	2632	1862	2989	3,177	2936	2417	2044	2662	3015	1485	



Records Management

Month / Year

October 2018

Staffing

Positions budgeted	<u>8</u>	Positions staffed	<u>8</u>
Training Hours	<u>62</u>	Non proficient staff	<u>1</u>

LERMS Record Merges

Total Merges	<u>1,636</u>
Case Narratives Merged	<u>677</u>
Arrest Narratives Merged	<u>89</u>
Traffic Accidents	<u>194</u>
Arrests	<u>472</u>
FIR Cards	<u>34</u>
Traffic Citations	<u>240</u>
TOTAL	<u>3,342</u>

Documents scanned 2,154

Warrants

Arrest Warrants	<u>42</u>
FTA / COC	<u>181</u>
TOTAL	<u>223</u>

Registered Sex Offenders

Annual Registrations	<u>43</u>
Quarterly Registrations	<u>30</u>
Total RSO Contacts	<u>77</u>

Customer Service Activity

Open Records Requests 397

Summary

Amy attended two hours of Extreme Ownership training.

Pam, Bev, Cori, Katie and Kelly attended twelve hours of Colorado Open Records Act Training hosted jointly by the GJPD & MCSO.

Victim Services Program

Month / Year October 2018

Staffing

Positions budgeted	1	Positions staffed	1
Number VAP volunteers	21+ 7 in training	Training hours (on duty)	21
VAP calls taken by coordinator		VAP Training Hours	
	2		2 + 16.5 hours for VAP Academy recruits
New victims served by coordinator through VRA mail notification, office visits, phone calls, (not counting victims from follow-up VAP contacts)		Meetings/Events Attended	4
	30		

Victim Advocate Activity

Number of first-response calls	32
Number of victims from call-outs	55
Total hours on active calls	63.75
TOTAL HR. VOLUNTEERED	1,606

Types of calls (first response only)

Domestic Violence	12
Unattended Deaths	5
Sexual Assaults	5
Assaults	3
Suicide	
Robbery/Agg. Robbery	
Homicide	
Felony menacing	
Sex assault on a child	
Traffic crash	1 + 1 sec.
Kidnapping	
Vehicular homicide	
Child abuse	
Harassment	
Other: 2 death notification, violation of PO, criminal mischief, missing person	5
TOTAL	32

Victim Services Program

Summary

Meetings/events:

- Coordinator attended monthly meeting of Western Slope Volunteer Management Association
- Coordinator participated in SART panel at CMU during their annual training
- Coordinator participated in oral boards for two VALE Board-funded grants
- Coordinator attended quarterly meeting of statewide law enforcement coordinators, held during the COVA Conference in Keystone

Training:

- Fall VAP Academy concluded after 16.5 hours of training on various topics
- Monthly VAP meeting included a presentation by co-responder team members Officer Kristine Gregory and Clinician Eric Gustavson
- Coordinator completed required 2.5 hours of education for City of Grand Junction employees
- Six VAPs attended the annual COVA Conference in Keystone, funded by VALE Board scholarships

Other:

- Volunteer placed 82 follow-up calls to victims of inactivated property crimes (talked directly with 29 victims; others were left voice messages).