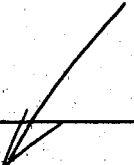
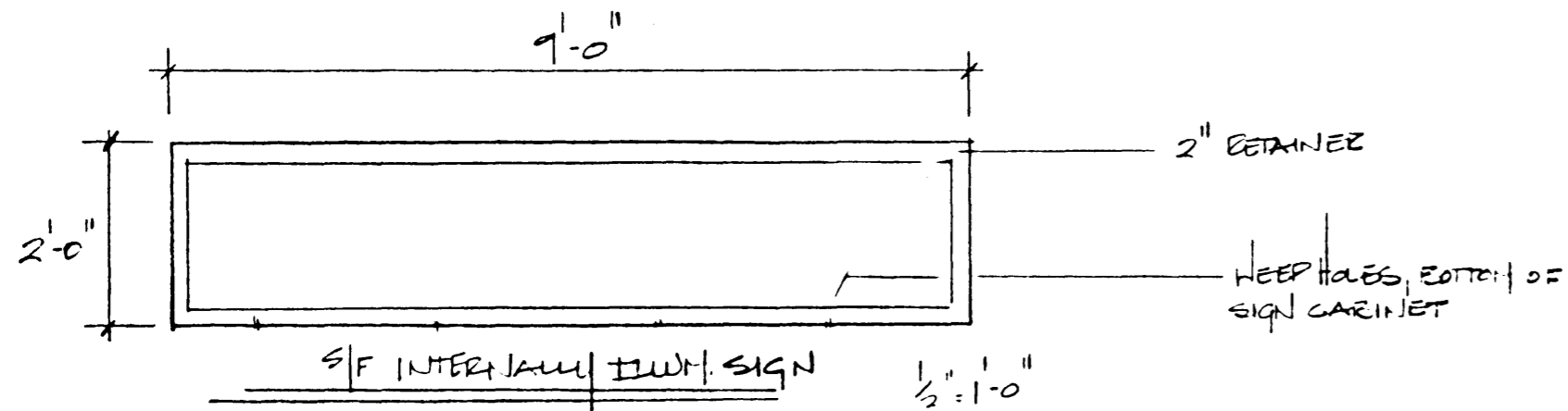


E



SENTINEL SQUARE

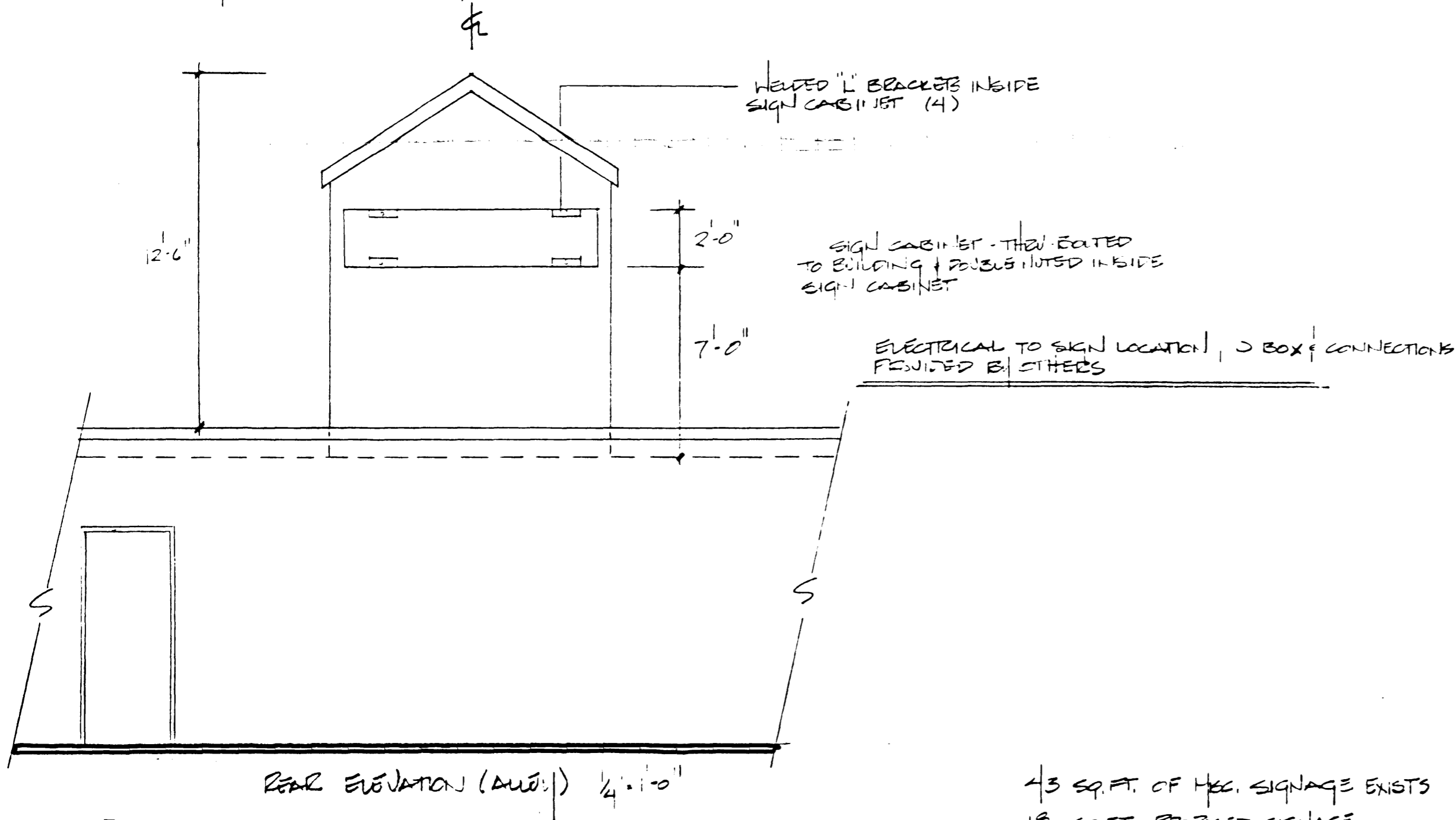
634 MAIN ST.



SIGN CABINET, BALLAST, LAMPS, & ELECTRICAL ARE EXISTING

4 LAMP V.H.C. ILLUMINATION (2) 4' (2) 5'

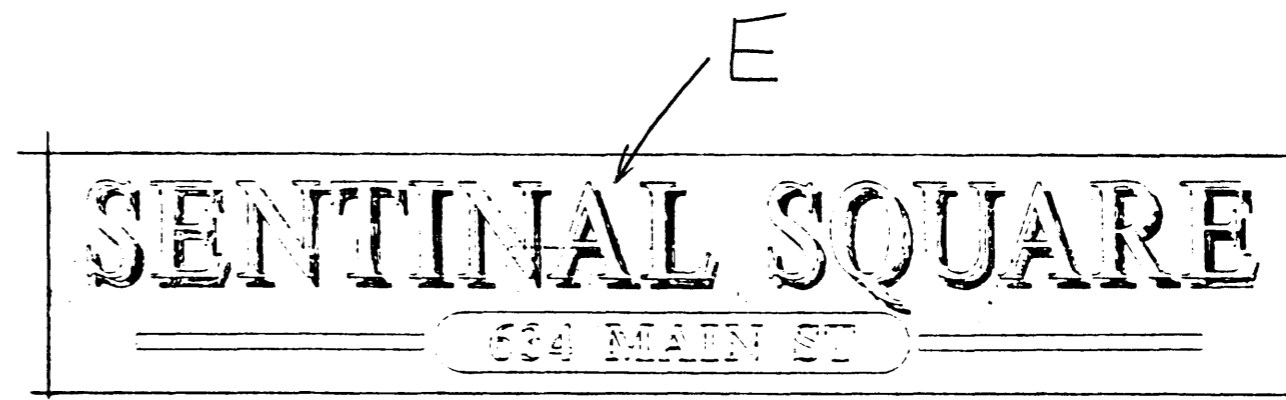
ALL ELECTRICAL - WIRING - BALLAST ETC. ENCLOSED IN PROPER
 WATER-TIGHT METAL BOX - 1/2\"/>



REAR ELEVATION (AWAY) 4'-11-0"

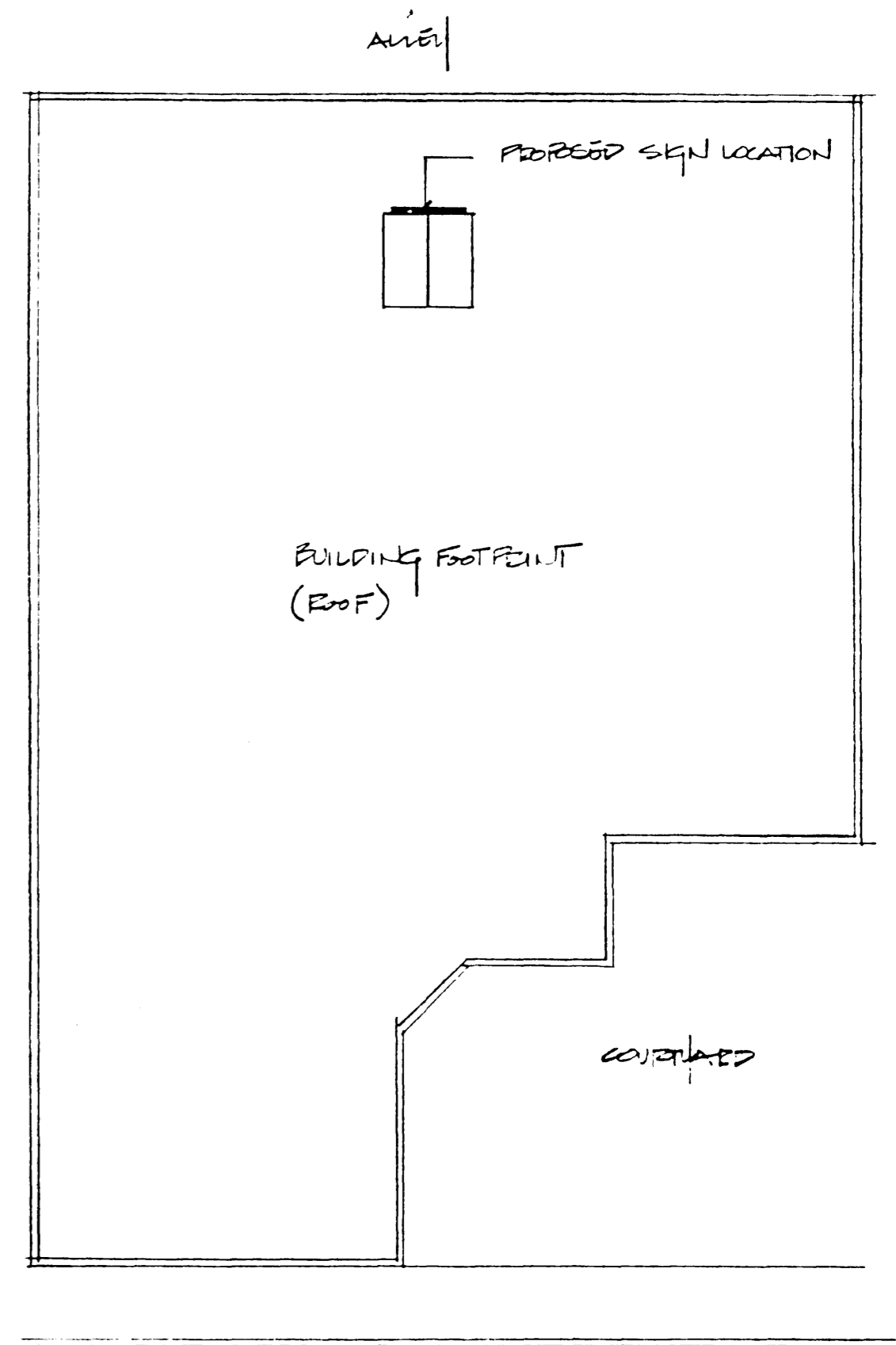
43 SQ. FT. OF EXC. SIGNAGE EXISTS
 18 SQ. FT. PROPOSED SIGNAGE
 61 TOTAL

SIGNAGE - SENTINEL SQUARE
 634 MAIN ST.



SIGN FACE 3/4" = 1'-0"

SENTINEL SQUARE - GREEN JINJLU - TRANSLUCENT
 MED. GREEN DROP SHADOWS
 634 MAIN ST - WHITE - FIELD & BARS - TRANSLUCENT MAROON JINJLU



MAIN ST.