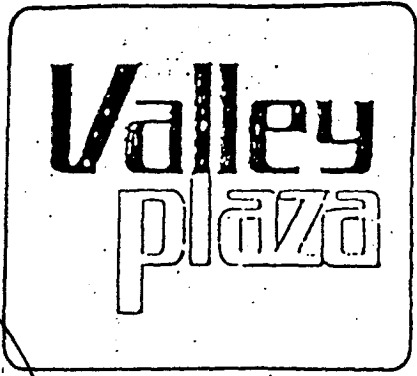




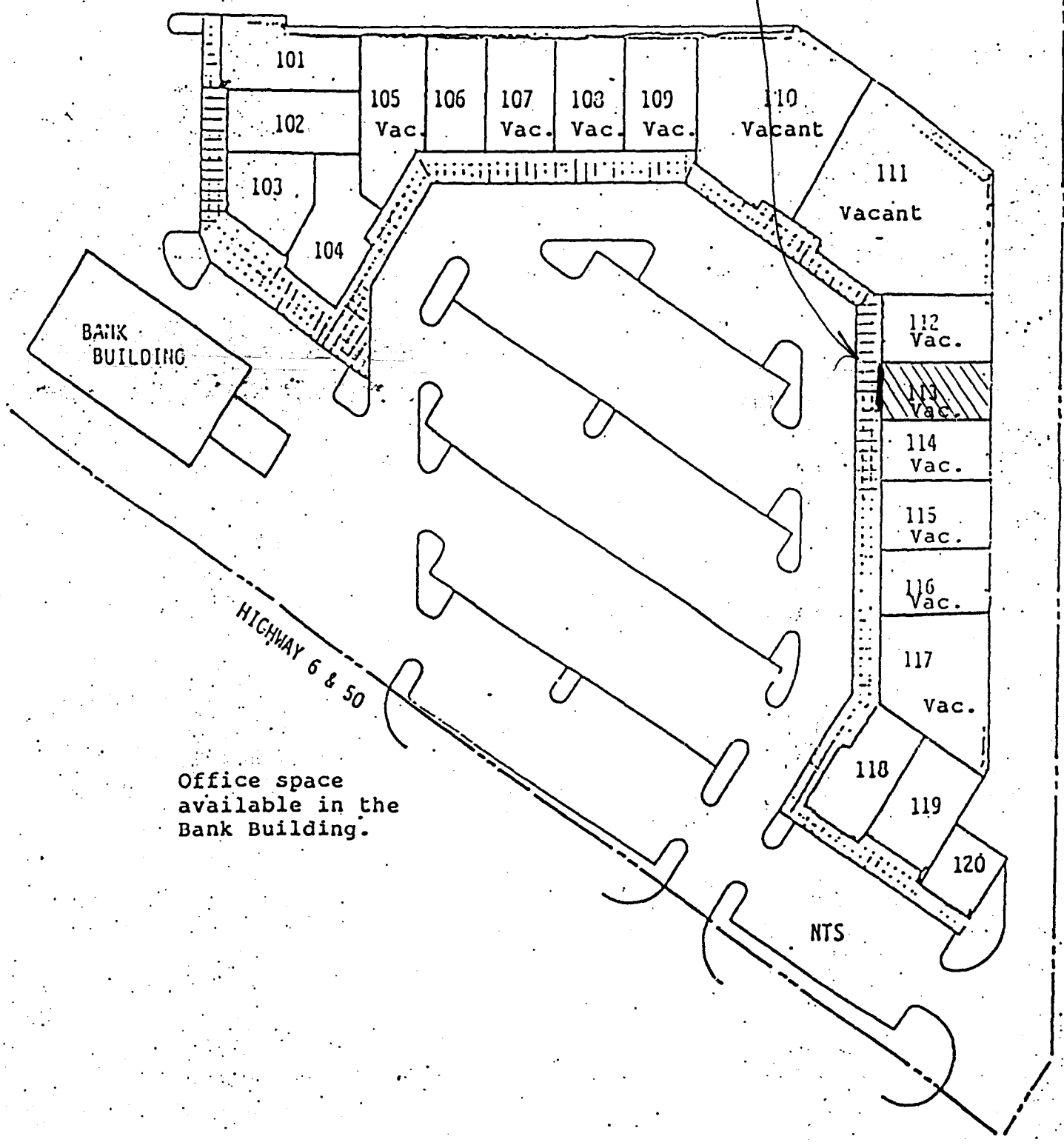
← 16' →

PLANTS + RETALS  
OF GD.

↑ 30' ↓



Sign is FLAT on ~~ROOF~~ FACADE OF Building.

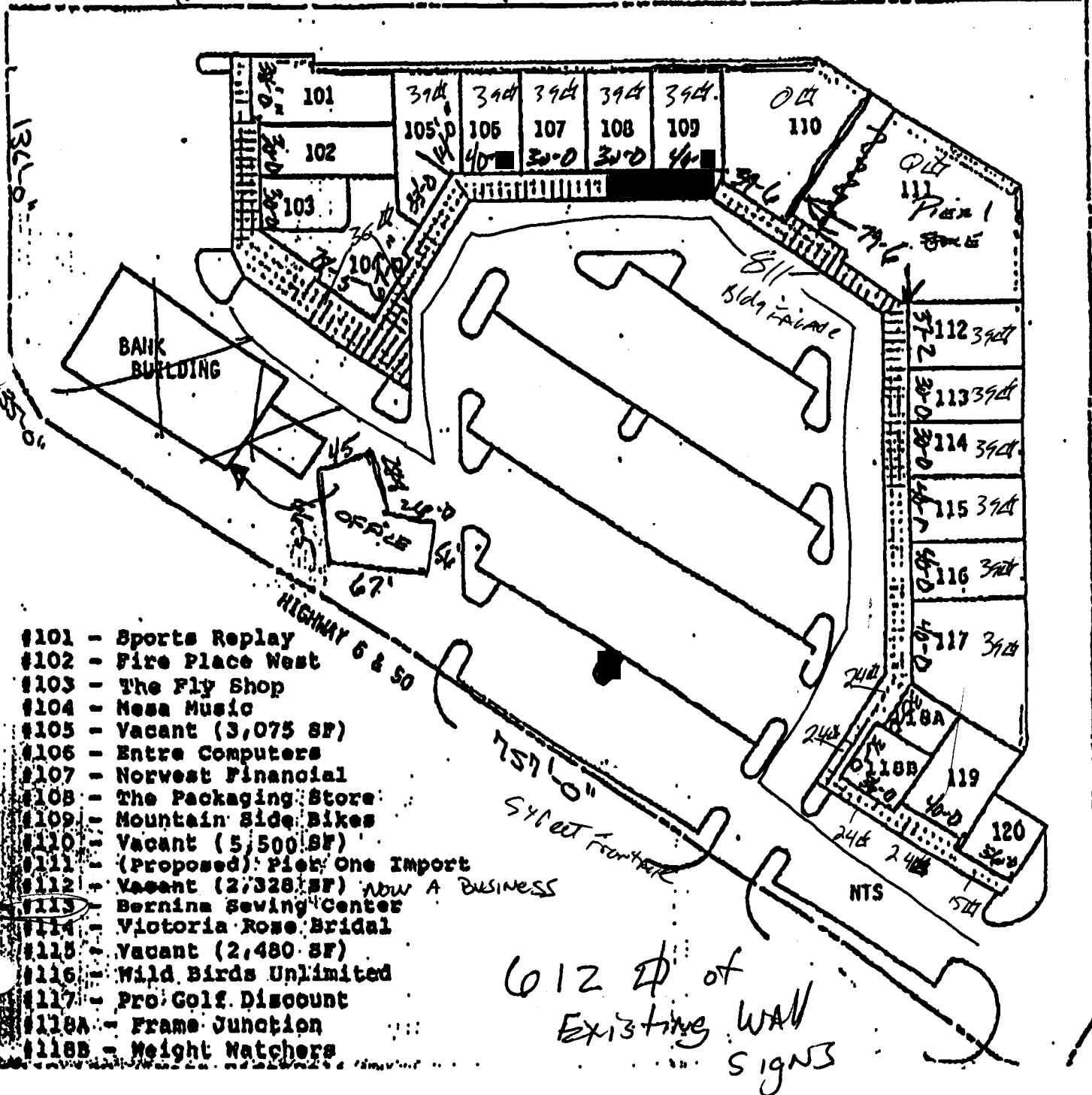


Office space available in the Bank Building.

Other signs for  
permits for  
this center in 1994  
Sign Folder



- Sq. Ft. of Shopping = 58,035 sq  
- Sq. Ft. of Office = 10,754 sq



- #101 - Sports Replay
- #102 - Fire Place West
- #103 - The Fly Shop
- #104 - Mesa Music
- #105 - Vacant (3,075 SF)
- #106 - Entre Computers
- #107 - Norwest Financial
- #108 - The Packaging Store
- #109 - Mountain Side Bikes
- #110 - Vacant (5,500 SF)
- #111 - (Proposed) Pick One Import
- #112 - Vacant (2,328 SF) NOW A BUSINESS
- #113 - Bernina Sewing Center
- #114 - Victoria Rose Bridal
- #115 - Vacant (2,480 SF)
- #116 - Wild Birds Unlimited
- #117 - Pro Golf Discount
- #118A - Frame Junction
- #118B - Weight Watchers

612 ft of  
Existing wall  
signs