



# SIGN CLEARANCE

ⓐ

Community Development Department  
250 North 5<sup>th</sup> Street  
Grand Junction CO 81501  
(970) 244-1430

Clearance No.	<u>77968</u>
Date Submitted	<u>12/5/00</u>
Fee \$	<u>25.00</u>
Zone	<u>C-2</u>

TAX SCHEDULE	<u>2945-091-00-104</u>	CONTRACTOR	<u>Western Neon Sign Co.</u>
BUSINESS NAME	<u>Circuit City</u>	LICENSE NO.	<u>2200334</u>
STREET ADDRESS	<u>2451 Hwy 6 + 50</u>	ADDRESS	<u>3183 HALL AVE 81504</u>
PROPERTY OWNER	<u>Reed Miller</u>	TELEPHONE NO.	<u>523-4045</u>
OWNER ADDRESS	<u>2455 Hwy 6 + 50 G.J.</u>	CONTACT PERSON	<u>John A</u>

<input checked="" type="checkbox"/> 1. FLUSH WALL	2 Square Feet per Linear Foot of Building Facade
<input type="checkbox"/> 2. ROOF	2 Square Feet per Linear Foot of Building Facade
<input type="checkbox"/> 3. FREE-STANDING	2 Traffic Lanes - 0.75 Square Feet x Street Frontage
	4 or more Traffic Lanes - 1.5 Square Feet x Street Frontage
<input type="checkbox"/> 4. PROJECTING	0.5 Square Feet per each Linear Foot of Building Facade
<input type="checkbox"/> 5. OFF-PREMISE	See #3 Spacing Requirements; Not > 300 Square Feet or < 15 Square Feet

Externally Illuminated       Internally Illuminated       Non-Illuminated

(1 - 5) Area of Proposed Sign: 28' Square Feet      Existing power

(1,2,4) Building Façade: 179'8" Linear Feet

(1 - 4) Street Frontage: 389' Linear Feet

(2 - 5) Height to Top of Sign: 17' Feet      Clearance to Grade: 15' Feet

(5) Distance from all Existing Off-Premise Signs within 600 Feet: NA Feet

**EXISTING SIGNAGE/TYPE:**

<u>(A) pole sign</u>	<u>115.5</u> Sq. Ft.
<u>(B)(C)(D)(E)(F)(G)(H)(K) FW</u>	<u>321.77</u> Sq. Ft.
<u>(J) Removed Appliances FW</u>	<u>34.66</u> Sq. Ft.
Total Existing:	_____ Sq. Ft.

**FOR OFFICE USE ONLY**

Signage Allowed on Parcel:

Building	<u>360</u> Sq. Ft.
Free-Standing	<u>493.5</u> Sq. Ft.
Total Allowed:	<u>493.5</u> Sq. Ft.

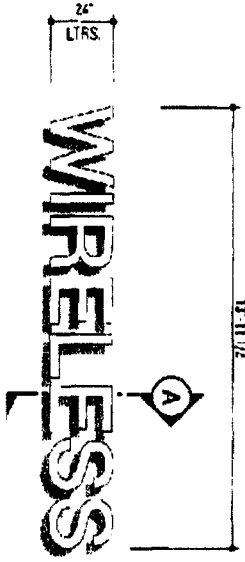
COMMENTS: Removed "Appliances" sign 3466 to install new "wireless" sign of 28 square feet.

NOTE: No sign may exceed 300 square feet. A separate sign clearance is required for each sign. Attach a sketch, to scale, of proposed and existing signage including types, dimensions and lettering. Attach a plot plan, to scale, showing: abutting streets, alleys, easements, driveways, encroachments, property lines, distances from existing buildings to proposed signs and required setbacks. **A SEPARATE PERMIT FROM THE BUILDING DEPARTMENT IS ALSO REQUIRED.**

I hereby attest that the information on this form and the attached sketches are true and accurate.

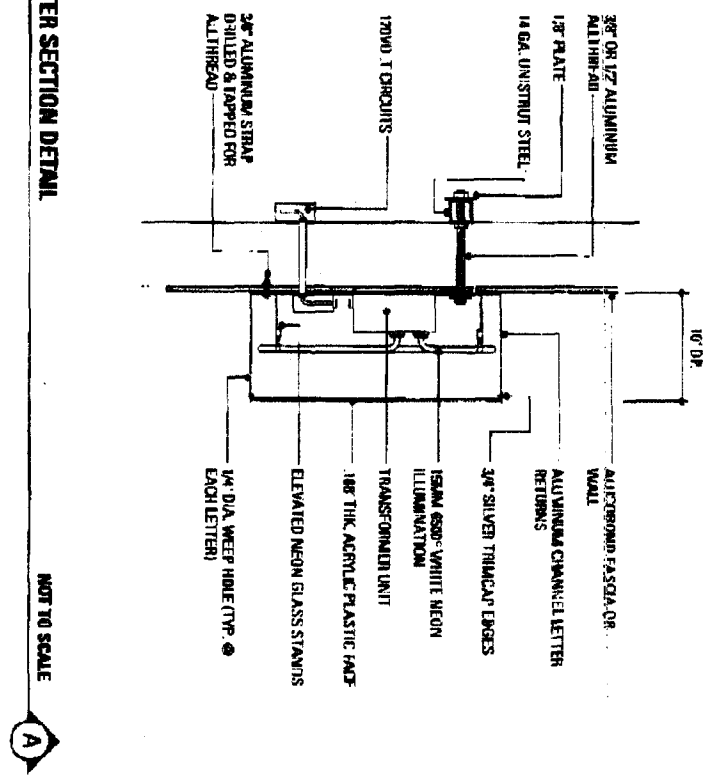
[Signature]      11-27-00      [Signature]      12-6-00  
 Applicant's Signature      Date      Community Development Approval      Date

(White: Community Development)      (Canary: Applicant)      (Pink: Building Dept)      (Goldenrod: Code Enforcement)



**LETTERS SPECIFICATIONS:**  
 INTERNALLY ILLUMINATED FABRICATED ALUMINUM CHANNEL LETTERS W/ 1/8" THK WHITE FR30B  
 ACRYLIC PLASTIC FACES & 3/4" SILVER THINCAP SERIES. STEP RETURNS PAINTED TO MATCH SILVER  
 MATTHEWS 41-SR. 15MM WHITE NEON ILLUMINATION

**LETTER SECTION DETAIL**



NOT TO SCALE

24" LETTERS

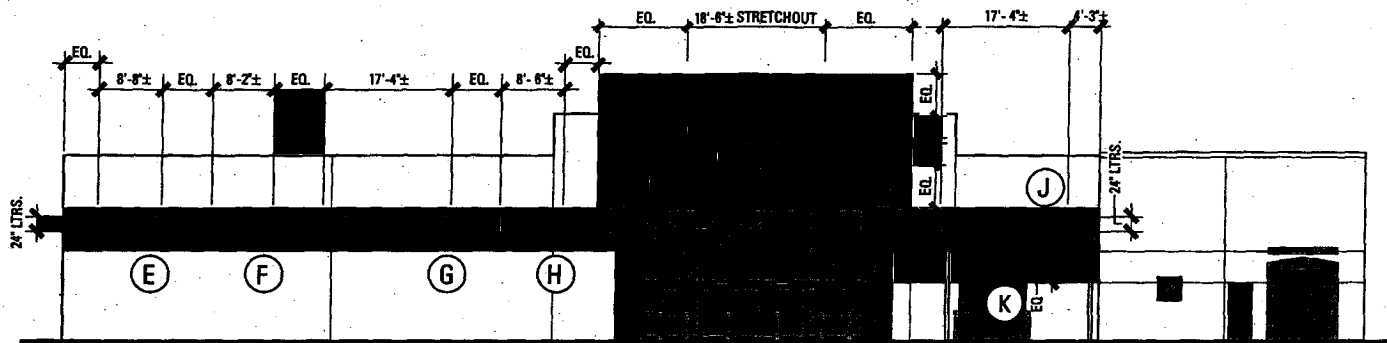
SCALE: 1/8" = 1'-0"

PROJECT NO.	0254-01
CLIENT	Circuit City S. Highway 50 & 6 @ 24 1/2 Rd., Grand Junction, CO.
DESIGNER	Gary Greene
DATE	November 21, 2000
SCALE	1/8" = 1'-0"
DESIGNED BY	A.M.

**ORIGINAL CONCEPT**  
 This design is the exclusive property  
 of Integrated Sign Associates  
 and cannot be reproduced  
 in whole or in part without their  
 prior written consent.







**LETTERS ("AUDIO", "VIDEO", "COMPUTERS", "MUSIC", "APPLIANCES"):**

SELF-CONTAINED INTERNALLY ILLUMINATED FABRICATED ALUMINUM CHANNEL LETTERS W/ 1/8" THK. WHITE #7328 ACRYLIC PLASTIC FACES & 3/4" SILVER TRIMCAP EDGES. 15MM WHITE NEON ILLUMINATION. 10" DP. RETURNS PAINTED TO MATCH SILVER MATTHEWS 41-342. LETTERS TO BE SURFACE MOUNTED TO ALUCOBOND PANELS (AS PER DETAIL).

**LETTERS ("CIRCUIT CITY"):**

SELF-CONTAINED FABRICATED OPEN ALUMINUM CHANNEL LETTERS W/ EXPOSED QUADRUPLE TUBE 15MM 6500° WHITE NEON ILLUMINATION. RETURNS & LETTER INTERIORS (FACE & RETURNS) PAINTED TO MATCH SILVER-MATTHEWS 41-342. LETTERS TO BE SURFACE MOUNTED TO ALUCOBOND PANELS.

**SIGN PANEL:**

S/F NON-ILLUMINATED FABRICATED .090" ALUMINUM SIGN PANEL W/ 1 1/2" DP. RETURNS. FACE & RETURNS PAINTED TO MATCH DUPONT IMRON RED #4402. 3M SATIN ALUMINUM #7725-120 VINYL OVERLAY BORDER (5/8" WD.) & 3M #7725-10 WHITE VINYL OVERLAY COPY.

**WEST ELEVATION**

1/16" = 1'-0"

7653-97

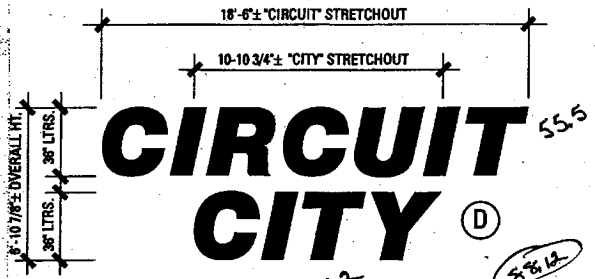
4

AS SHOWN  
 Client: City of Chicago  
 S. Highway 50 St @ 24 1/2 Rd., Grand Junction, CO.  
 DATE: 10/10/00  
 DRAWN BY: CARY GREENE

ORIGINAL CONCEPT  
 The design is the exclusive property  
 of Integrated Sign Associates  
 and cannot be reproduced



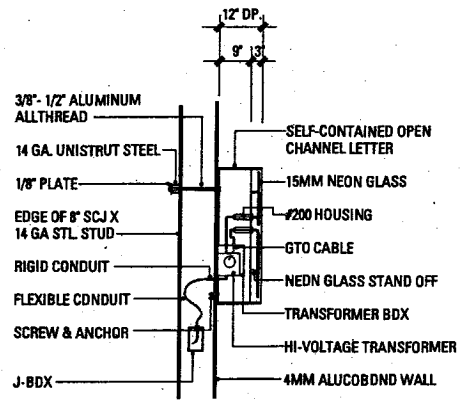
Integrated SIGN ASSOCIATES  
 a visual communications company



**LETTERS ('CIRCUIT CITY'):**  
 SELF-CONTAINED FABRICATED OPEN CHANNEL ALUMINUM LETTERS W/ EXPOSED QUADRUPLE TUBE 15MM Ø500° WHITE NEON ILLUMINATION. RETURNS & LETTER INTERIDRS (FACE & RETURNS) PAINTED TO MATCH SILVER-MATTHEWS 41-342. LETTERS TO BE SURFACE MOUNTED TO ALUCOBDND PANELS (AS PER DETAIL).

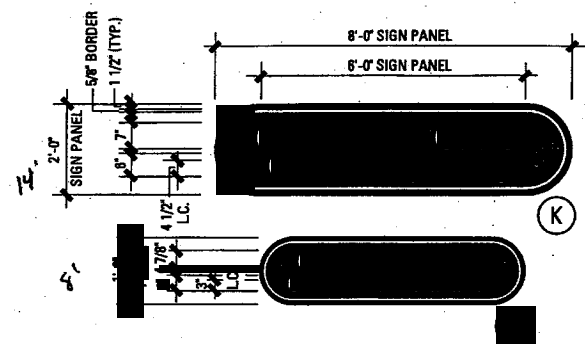
**OPEN CHANNEL LETTERS ENLARGED LAYOUT**

1/8"=1'-0"



**OPEN CHANNEL LETTER DETAIL**

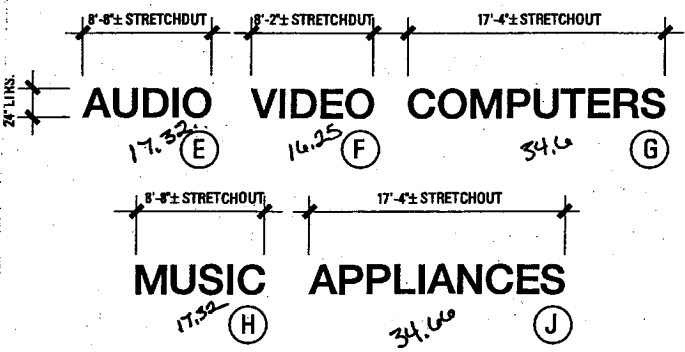
3/8"=1'-0"



**SIGN PANELS:**  
 S/F NDN-ILLUMINATED FABRICATED .090" ALUMINUM SIGN PANEL W 1 1/2" DP. RETURNS. FACE & RETURNS PAINTED TO MATCH DUPONT IMRON RED #4402. 3M SATIN ALUMINUM #7725-120 VINYL OVERLAY BORDER (5/8" WD.) & 3M #7725-10 WHITE VINYL OVERLAY COPY (TYPICAL).

**S/F WALL SIGN PANELS**

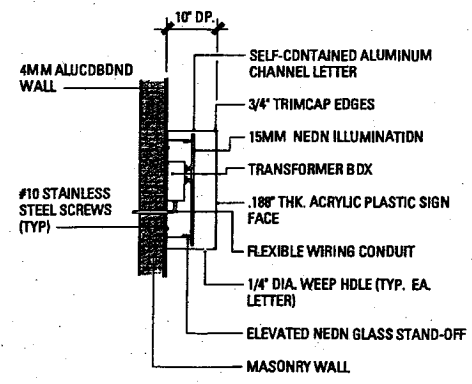
3/8"=1'-0"



**LETTERS:**  
 NEW SELF-CONTAINED INTERNALLY ILLUMINATED FABRICATED ALUMINUM CHANNEL LETTERS W/.188" THK. WHITE #7328 ACRYLIC PLASTIC FACES & 3/4" SILVER TRIMCAP EDGES. 15MM WHITE NEDN ILLUMINATION. 10" DP. RETURNS PAINTED TO MATCH SILVER MATTHEWS 41-342. LETTERS TO BE SURFACE MOUNTED TO ALUCOBDND PANELS (AS PER DETAIL).

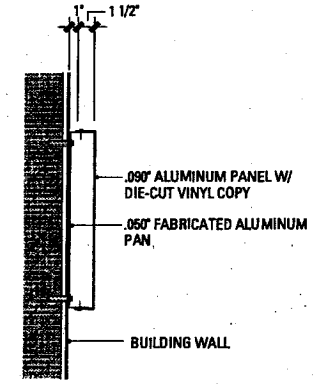
**ALUMINUM CHANNEL LETTERS ENLARGED LAYOUT**

1/8"=1'-0"



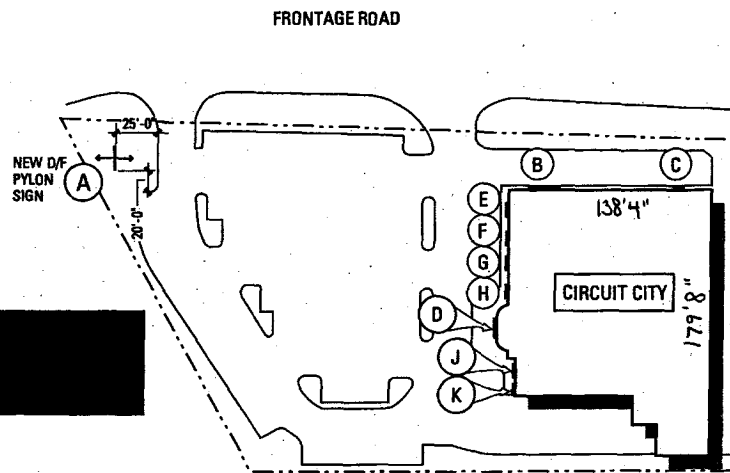
**ALUMINUM CHANNEL LETTER DETAIL**

1/2"=1'-0"



**SIGN PANEL DETAIL**

NOT TO SCALE



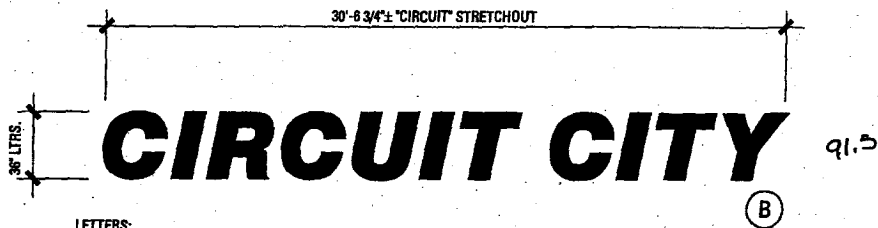
NOTE:

KEY

- A NEW D/F INTERNALLY ILLUMINATED PYLON SIGN CABINE  
8'-3" X 14'-0" CABINET @ 40'-0" OVERALL HT. "CIRCUIT CITY"
- B NEW SELF-CONTAINED INTERNALLY ILLUMINATED ALUM  
CHANNEL LETTERS. 36" LTRS. @ 30 6 3/4'-0"± STRETCHOUT  
CITY.
- C S/F NON-ILLUMINATED FABRICATED ALUMINUM SIGN P/  
1'-6" X 6'-0" SIGN PANEL "CIRCUIT CITY"... "CAR STEREO..."
- D NEW SELF-CONTAINED INTERNALLY ILLUMINATED OPEN  
CHANNEL LETTERS. 36" LTRS. @ 16'-8"± STRETCHOUT  
"CIRCUIT CITY".
- E NEW SELF-CONTAINED INTERNALLY ILLUMINATED ALUM  
CHANNEL LETTERS. 24" LTRS. X 8'-8"± "AUDIO" LTRS.
- F NEW SELF-CONTAINED INTERNALLY ILLUMINATED ALUM  
CHANNEL LETTERS. 24" LTRS. X 8'-2"± "VIDEO" LTRS.
- G NEW SELF-CONTAINED INTERNALLY ILLUMINATED ALUM  
CHANNEL LETTERS. 24" LTRS. X 17'-4"± "COMPUTERS" LTR
- H NEW SELF-CONTAINED INTERNALLY ILLUMINATED ALUM  
CHANNEL LETTERS. 24" LTRS. X 8'-8"± "MUSIC" LTRS.
- J NEW SELF-CONTAINED INTERNALLY ILLUMINATED ALUM  
CHANNEL LETTERS. 24" X 17'-4"± "APPLIANCES" LTRS.
- K S/F NON-ILLUMINATED FABRICATED ALUMINUM SIGN P.  
2'-0" X 8'-0" SIGN PANEL "CIRCUIT CITY"... "CUSTOMER PIC

**SITE PLAN**

NO SCALE

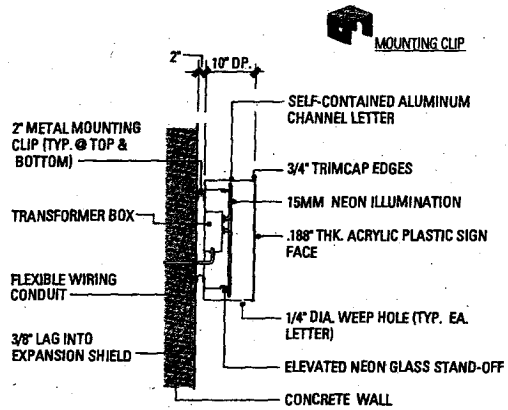


**LETTERS:**

SELF-CONTAINED INTERNALLY ILLUMINATED FABRICATED ALUMINUM CHANNEL LETTERS W/ .188" THK. RED #2793 ACRYLIC PLASTIC FACES & 3/4" SILVER TRIMCAP EDGES. 10" DP. RETURNS PAINTED TO MATCH SILVER MATTHEWS 41-342.15MM CLEAR RED NEON ILLUMINATION.

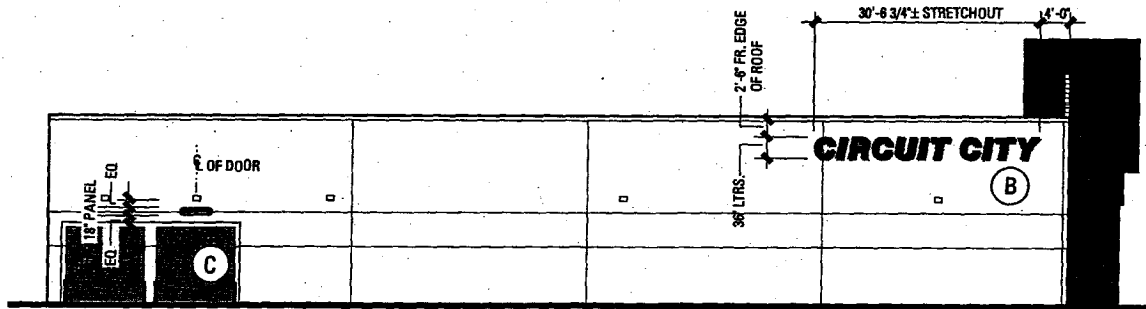
**ALUMINUM CHANNEL LETTERS ENLARGED LAYOUT**

3/16" = 1'-0"



**ALUMINUM CHANNEL LETTER DETAIL**

1/2" = 1'-0"



**SIGN PANEL:**

S/F NON-ILLUMINATED FABRICATED .090" ALUMINUM SIGN PANEL W 1 1/2" DP. RETURNS. FACE & RETURNS PAINTED TO MATCH DUPONT IMRON RED #4402. 3M SATIN ALUMINUM #7725-120 VINYL OVERLAY BORDER (5/8" WD.) & 3M #7725-10 WHITE VINYL OVERLAY COPY (TYPICAL).

**NORTH ELEVATION**

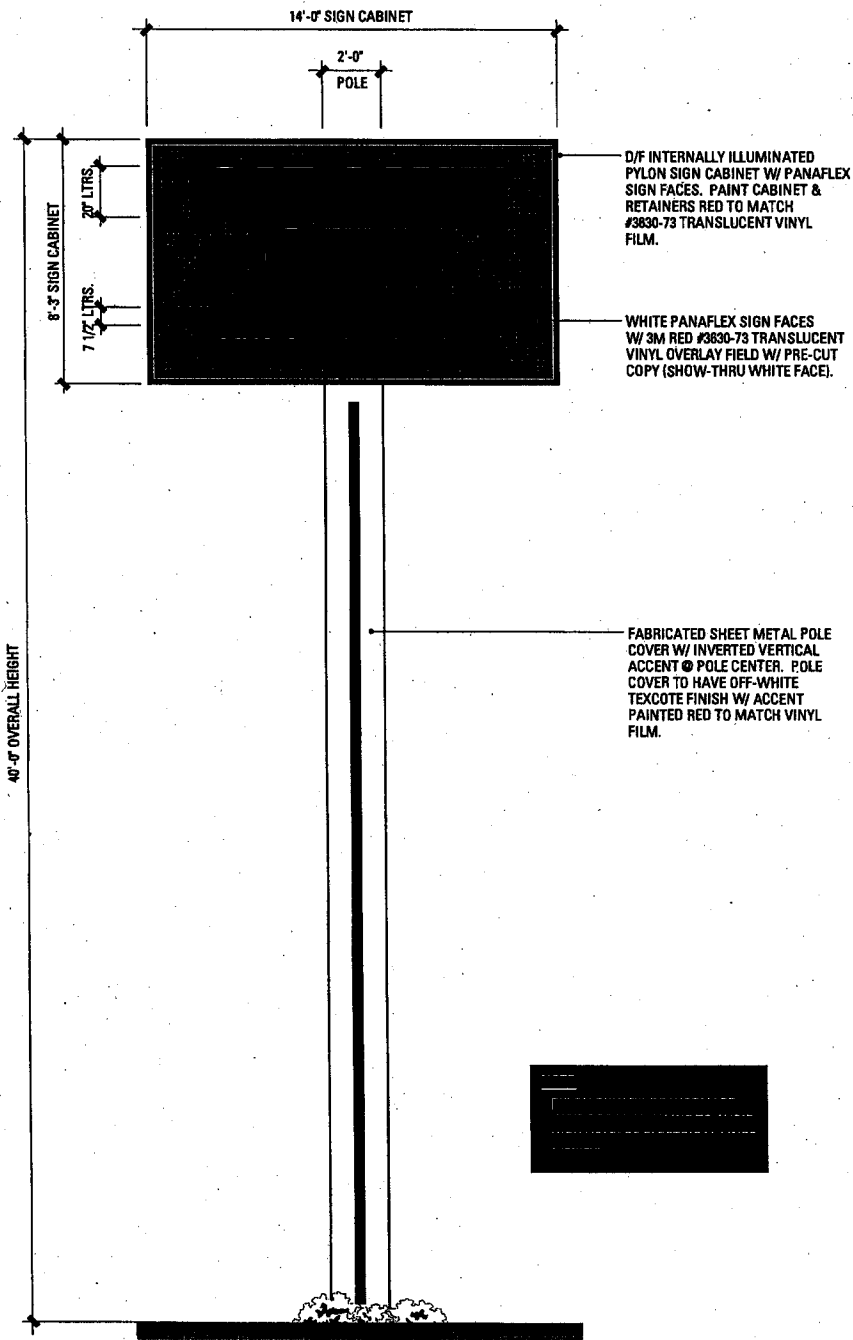
1/16" = 1'-0"

ORIGINAL CONCEPT

Circuit City  
S. Highway 50 @ 6 @ 24 1/2 Rd., Grand Junction, CO.

7653-97

77



14' x 8' 3" = 115.50

**A NEW D/F PYLON SIGN**

1/4" = 1'-0"





