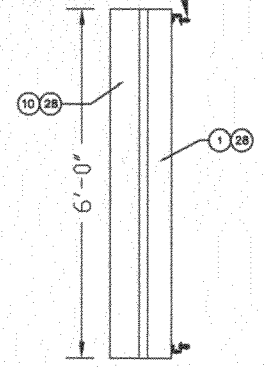


INSTALLATION NOTES:
 INSTALLER TO PROVIDE 1/2" D. FASTENERS THAT ARE APPROPRIATE FOR THE WALL CONSTRUCTION, MINIMUM 24" ON CENTER.
 WHEN THE LIFTING EYE IS REMOVED, INSTALL 1/2" BOLTS AND SEAL AGAINST WATER ENTRY.



This sign is intended to be installed in accordance with the requirements of Article 600 of the National Electrical Code and/or other applicable local codes. This includes proper grounding and bonding of the sign.

REV	BY	DATE	DESCRIPTION
 MAGNA Sign Corporation <small>224 INDUSTRIAL DRIVE LEXINGTON, S.C. 29072 PH. (803) 608-8600</small>			
<small>THIS IS AN ORIGINAL UNPUBLISHED DESIGN CREATED BY MAGNA SIGN CORPORATION. IT IS SUBMITTED FOR YOUR PERSONAL USE IN CONNECTION WITH THE PROJECT PLANNED FOR YOU BY MAGNA SIGN CORPORATION. IT IS NOT TO BE SHOWN TO ANYONE OUTSIDE YOUR ORGANIZATION; NOR IS IT TO BE USED, REPRODUCED, COPIED, OR EXHIBITED IN ANY MANNER WHATSOEVER. ALL OF ANY PART OF THIS DESIGN (EXCEPTING REGISTERED TRADEMARKS) REMAIN THE PROPERTY OF MAGNA SIGN CORPORATION.</small>			
TITLE: 8' X 24' 5/F ILLUMINATED, ARCHED WALL SIGN			DRAWING NUMBER:
CUSTOMER: CATERPILLAR			ACSES:
LOCATION:			SHEET: 1 OF 4
DATE: 1/15/04			WORK ORDER NO.:
DRAWN BY: RSS		PROJECT MANAGER:	CHECKED BY:
ITEM #			

