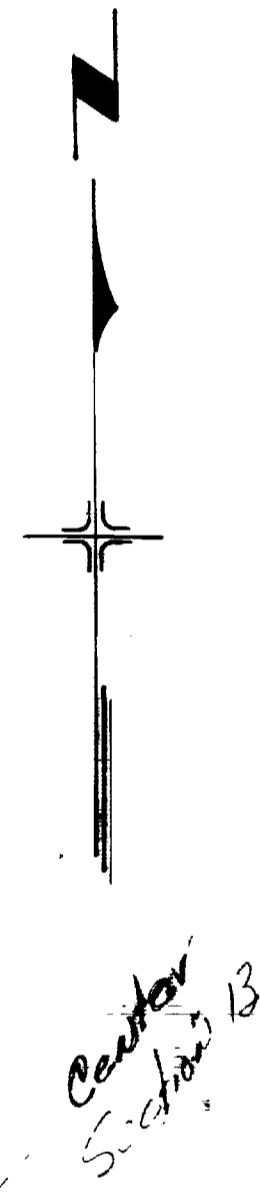
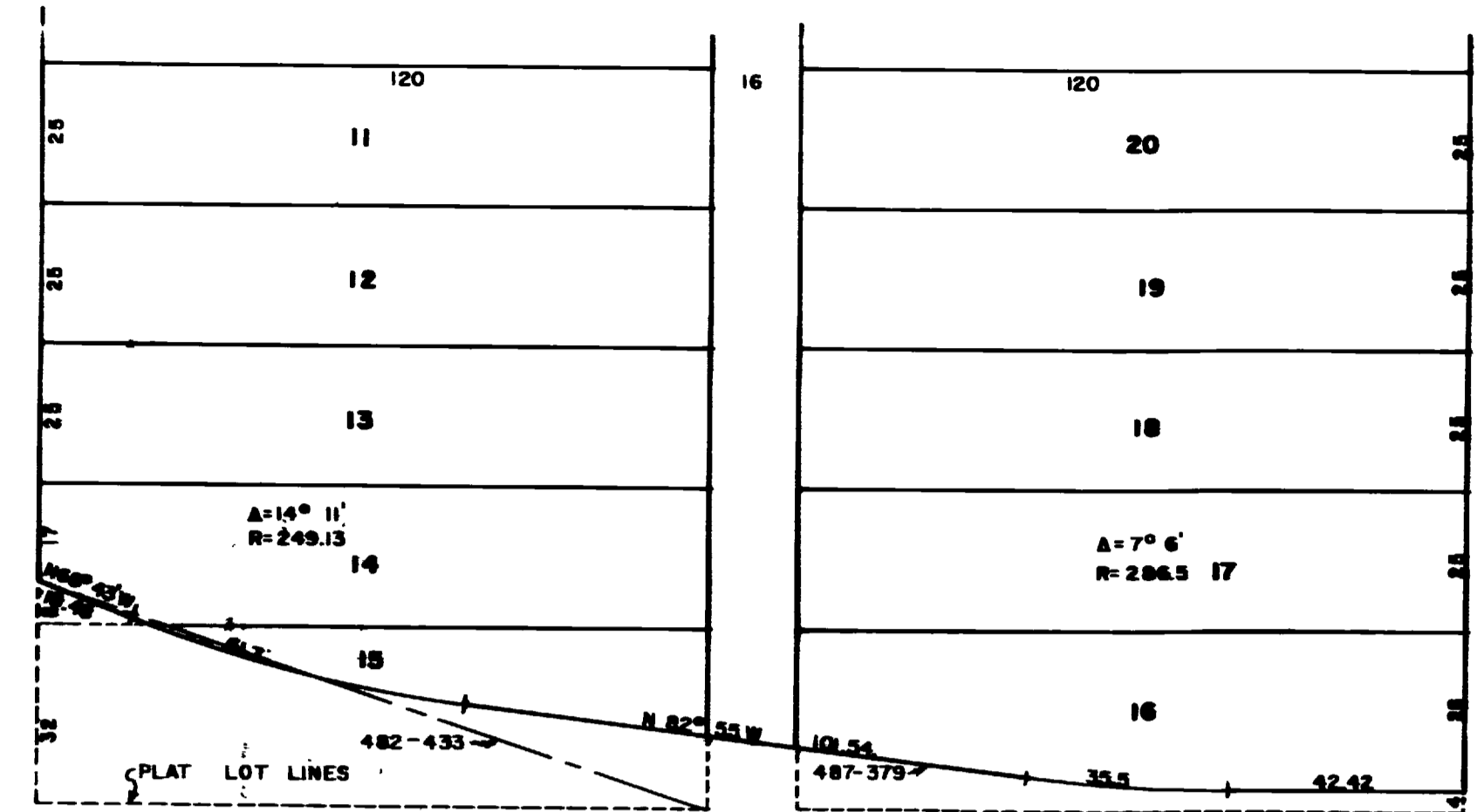
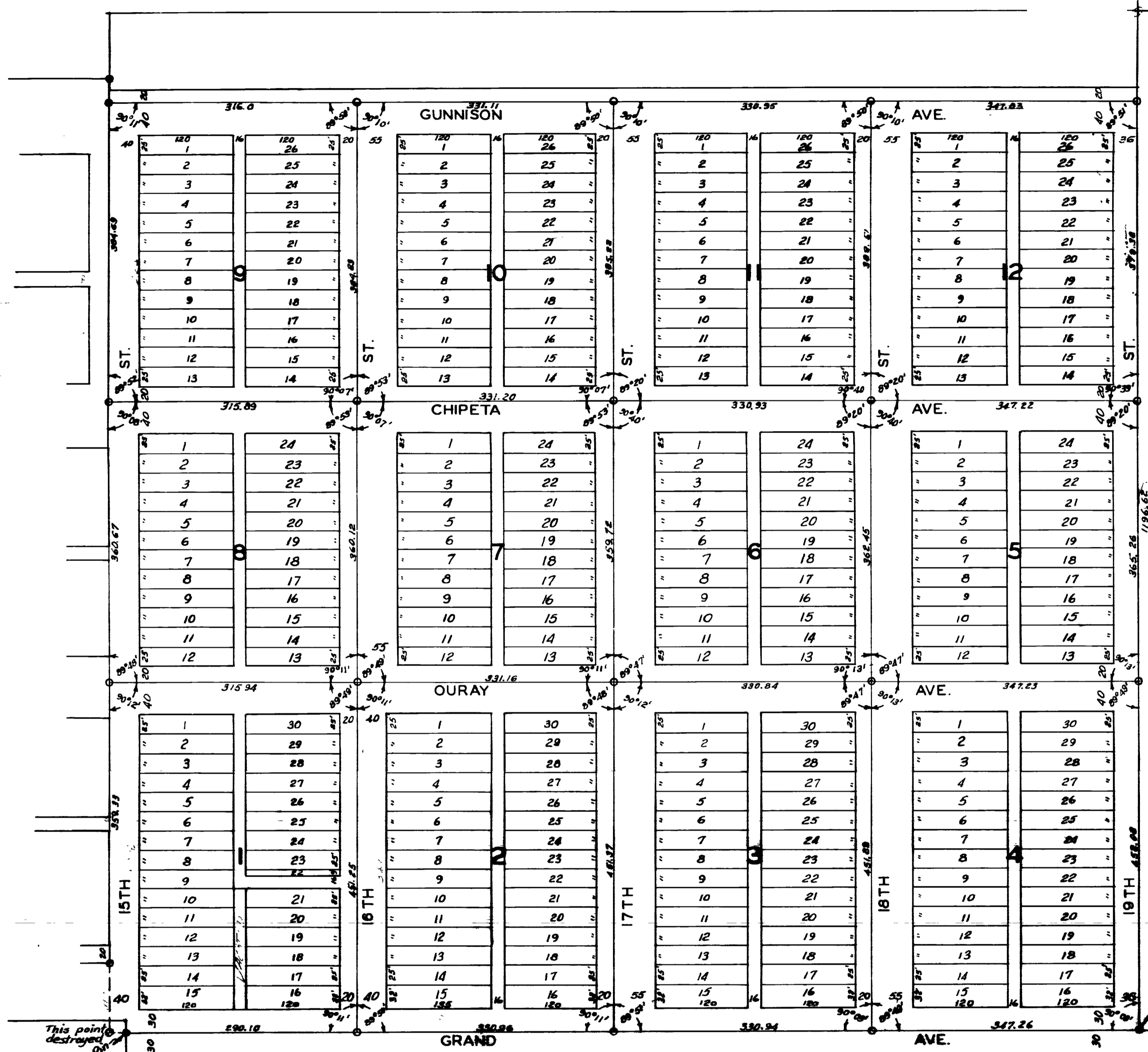


R. O. W. DEEDED FOR GRAND AVE.
BLK. ONE SLOCOMBS ADD.



CITY OF GRAND JUNCTION
AND THE
OFFICE of the CITY ENGINEER
SLOCOMB'S ADDITION
SE 1/4 of the NW 1/4, Sec. 13
DATE: 5 APRIL 1948 SCALE: 1"=100'

REVISIONS & DATE
24 of 24
April 27, 1948
DRAWN BY
R. L. ...
CHECKED BY
...
01 302