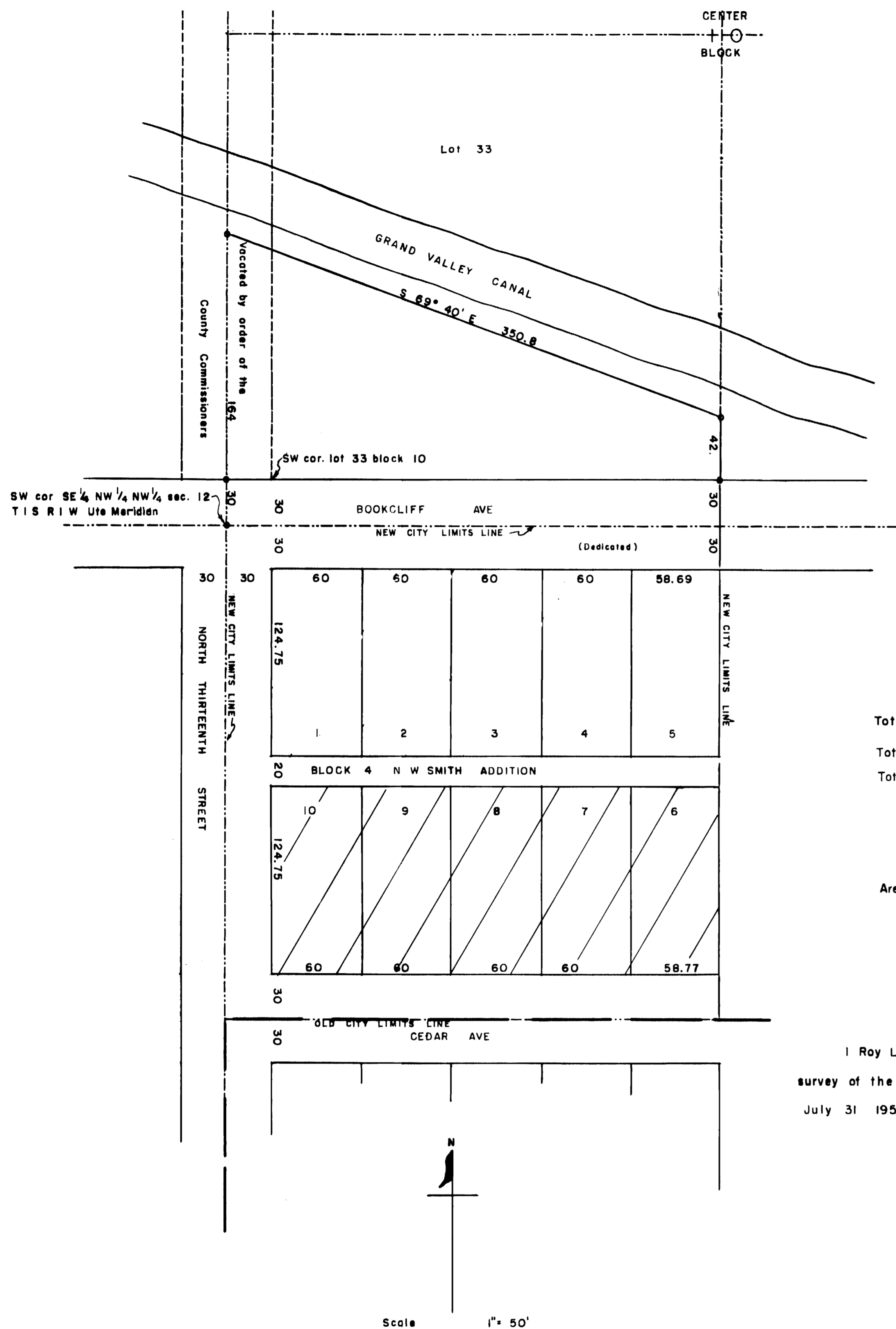


GRAND JUNCTION  
MESA COUNTY COLORADO  
ANNEXATION PLAT

Of the following described land: All of block 4, of the N. W. Smith Addition;



Approved by the Planning Commission of the City of Grand Junction, Colorado, this 18<sup>th</sup> day of December 1957

By M.A. Corns  
Chairman

Approved for the City of Grand Junction, Colorado, this 18<sup>th</sup> day of December 1957

By R.E. Cheever  
City Manager  
Carl A. Alstott  
City Engineer

Total net area of annexation in square feet 108,380

Total net area owned by signors 37,272

Total Square feet Dedicated for streets & alleys 27,807

Area signed in favor of Annexation —

I do hereby certify, that the property described hereon, was annexed to the City of Grand Junction, Colorado, by Ordinance number 1038 on the 19 day of MARCH A D 1958

Helmer C. Tomlinson  
City Clerk

I Roy L. George, do hereby certify that this is a true and correct plat of survey of the above described land.

July 31 1957

Roy L. George  
County Surveyor, R. L. S.

I certify that this instrument was filed in my office at \_\_\_\_\_ o'clock \_\_\_ M and is recorded in Plat book \_\_\_\_\_ at page \_\_\_\_\_

\_\_\_\_\_  
County Clerk and Recorder  
By \_\_\_\_\_  
Deputy