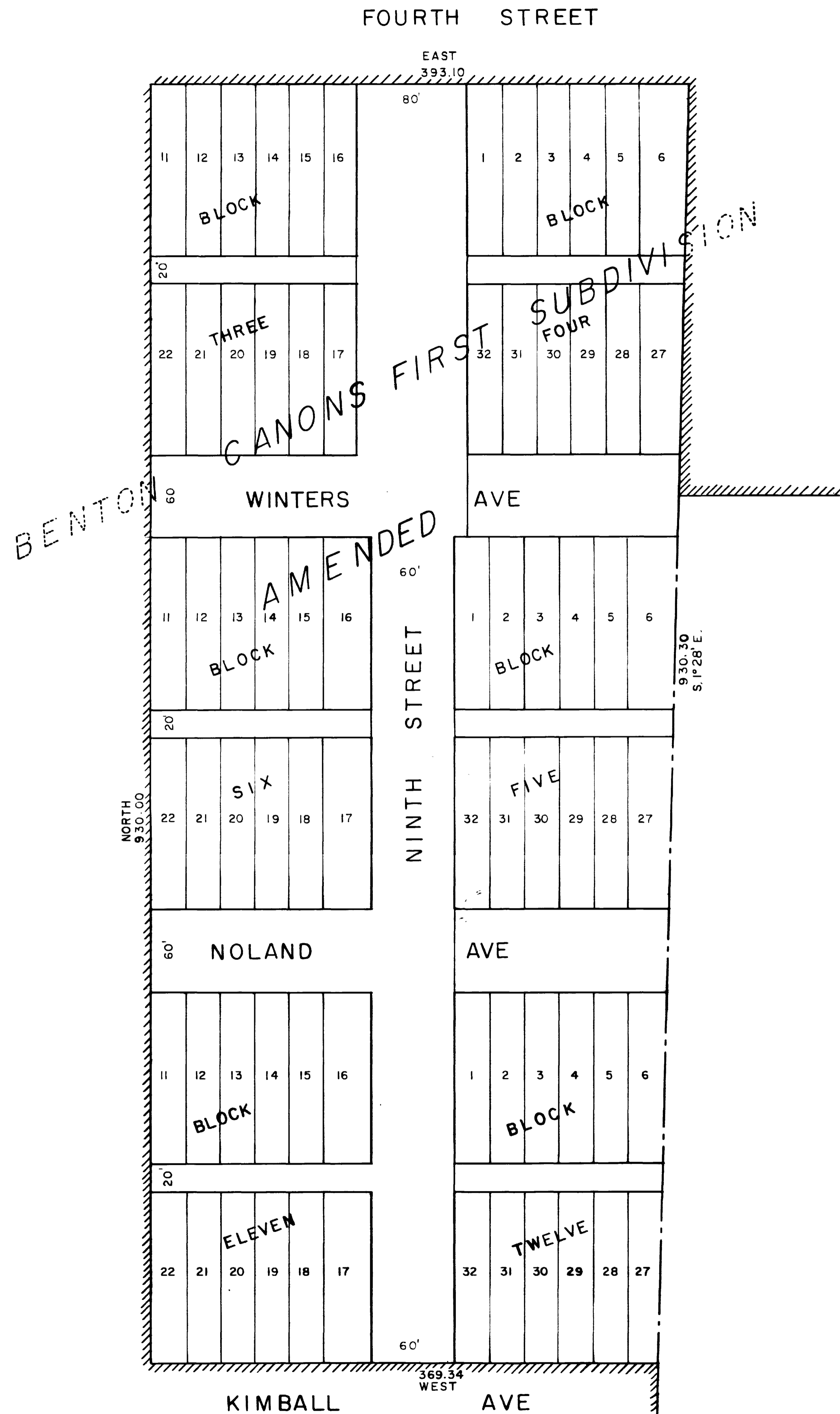


COUNTY SHOPS ANNEXATION

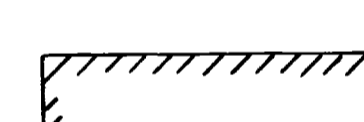
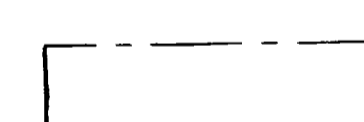
SEC 23 T1S R1W U.P.M.
MESA COUNTY COLORADO



LEGAL DESCRIPTION

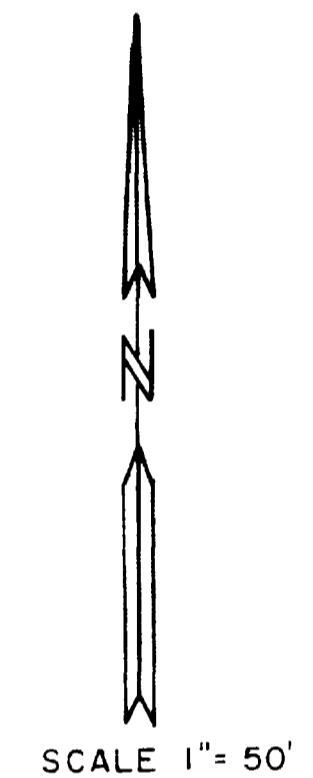
Beginning at a point on the Northeast corner of Lot 6, BLOCK 4, of BENTON CANON'S FIRST SUBDIVISION AMENDED Section 23, Township 1, South Range 1, West,
Thence S. 1° 28' E. 930.30 along the east line of said BENTON CANON'S FIRST SUB AMENDED to a point on the Southeast corner of Lot 27, BLOCK 12, thereof.
Thence WEST 369.34 feet along the North right-of-way line of KIMBALL AVE to a point on the Southwest corner of Lot 22 Block 11, of the BENTON CANON'S FIRST SUBDIVISION AMENDED
Thence NORTH 930.00 feet to a point on the Northwest corner of Lot 11, Block 3 of said BENTON CANON'S FIRST SUB AMENDED said point also being the south right-of-way line of FOURTH STREET
Thence EAST 393.10 Feet along the South Right-of-Way line of FOURTH STREET to the POINT of BEGINNING All in MESA COUNTY COLORADO.

LEGEND

-  Boundary of existing city limits
-  Boundary of new city limits

NOTES

Perimeter of County Shops Annexation	2,622.74'±
Existing city limits contiguous with County Shops Annexation	1,992.74'±
Area in County Shops Annexation	8.14 Acres



EFFECTIVE July 16, 69
ORD 1325