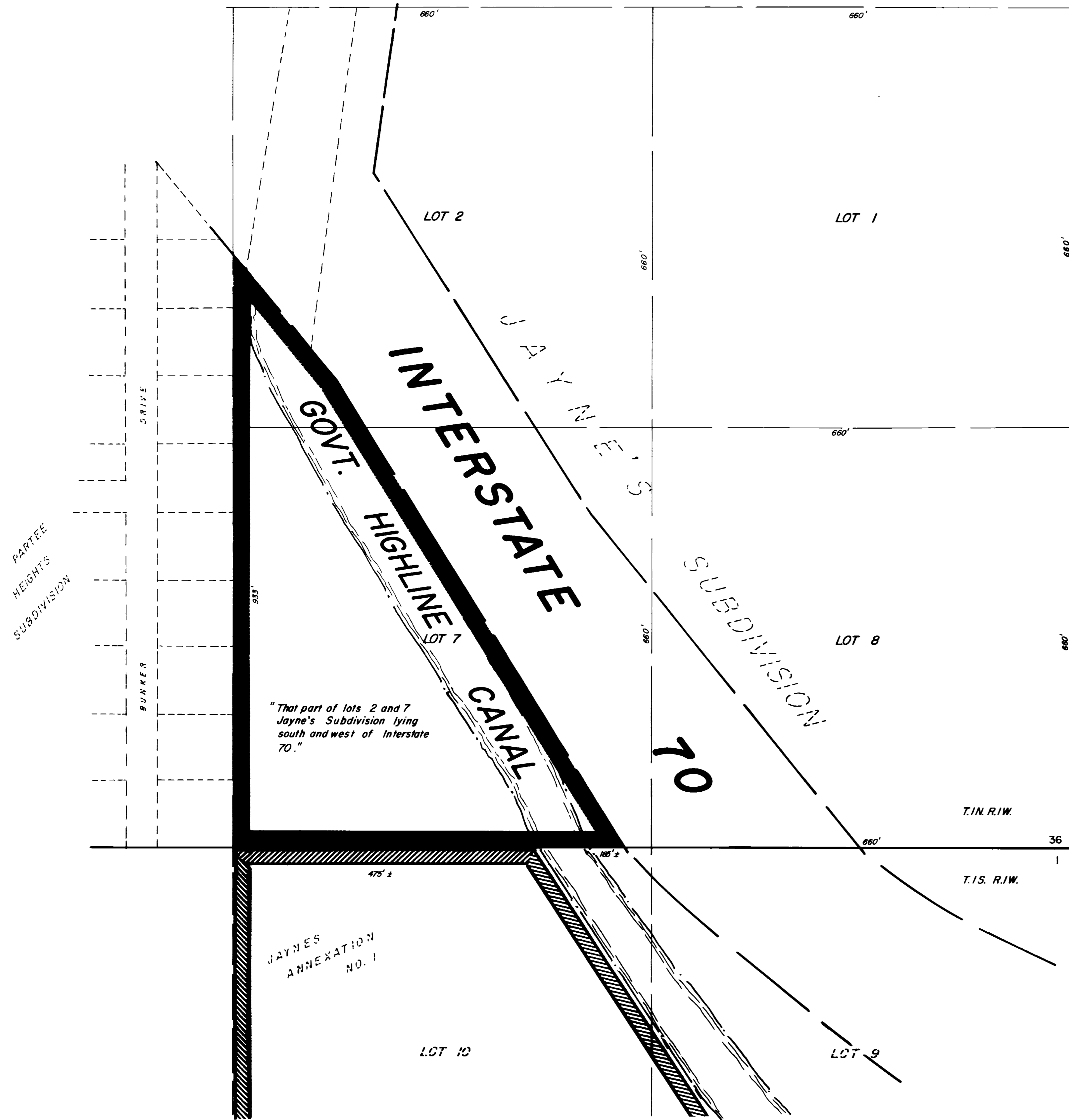


JAYNES ANNEXATION NO. 2



DESCRIPTION

THAT PART OF LOTS 2 AND 7 JAYNES SUBDIVISION SECTION 36, TOWNSHIP 1 NORTH RANGE 1 WEST OF THE UTE MERIDIAN LYING SOUTH AND WEST OF INTERSTATE 70, IN MESA COUNTY, COLORADO

LEGEND

BOUNDARY OF EXISTING CITY LIMITS —
 BOUNDARY OF NEW CITY LIMITS —

AREA OF ANNEXATION

EXISTING BOUNDARY CONTIGUOUS TO CITY LIMITS ————— 475 FT.
 PERIMETER OF AREA TO BE ANNEXED ————— 2,658 FT.
 TOTAL ANNEXED AREA IN SQUARE FEET ————— 303,200 SQ. FT.
 TOTAL ANNEXED AREA IN ACRES ————— 6.96 ACRES

ENGINEER'S CERTIFICATE

I GUSTAV A. BYROM A REGISTERED ENGINEER DO HEREBY CERTIFY THAT THE ACCOMPANYING PLAT AND LEGAL DESCRIPTION OF JAYNES ANNEXATION NO.2 WAS PREPARED UNDER MY DIRECT SUPERVISION FROM INFORMATION SECURED FROM OFFICES OF MESA COUNTY CLERK AND RECORDER AND MESA COUNTY ASSESSOR.

ORDINANCE NO. 1490
 EFFECTIVE DATE 2-20-74

SIGNED
 GUSTAV A. BYROM /P.E.#4748
 DATE FEBRUARY 20, 1974