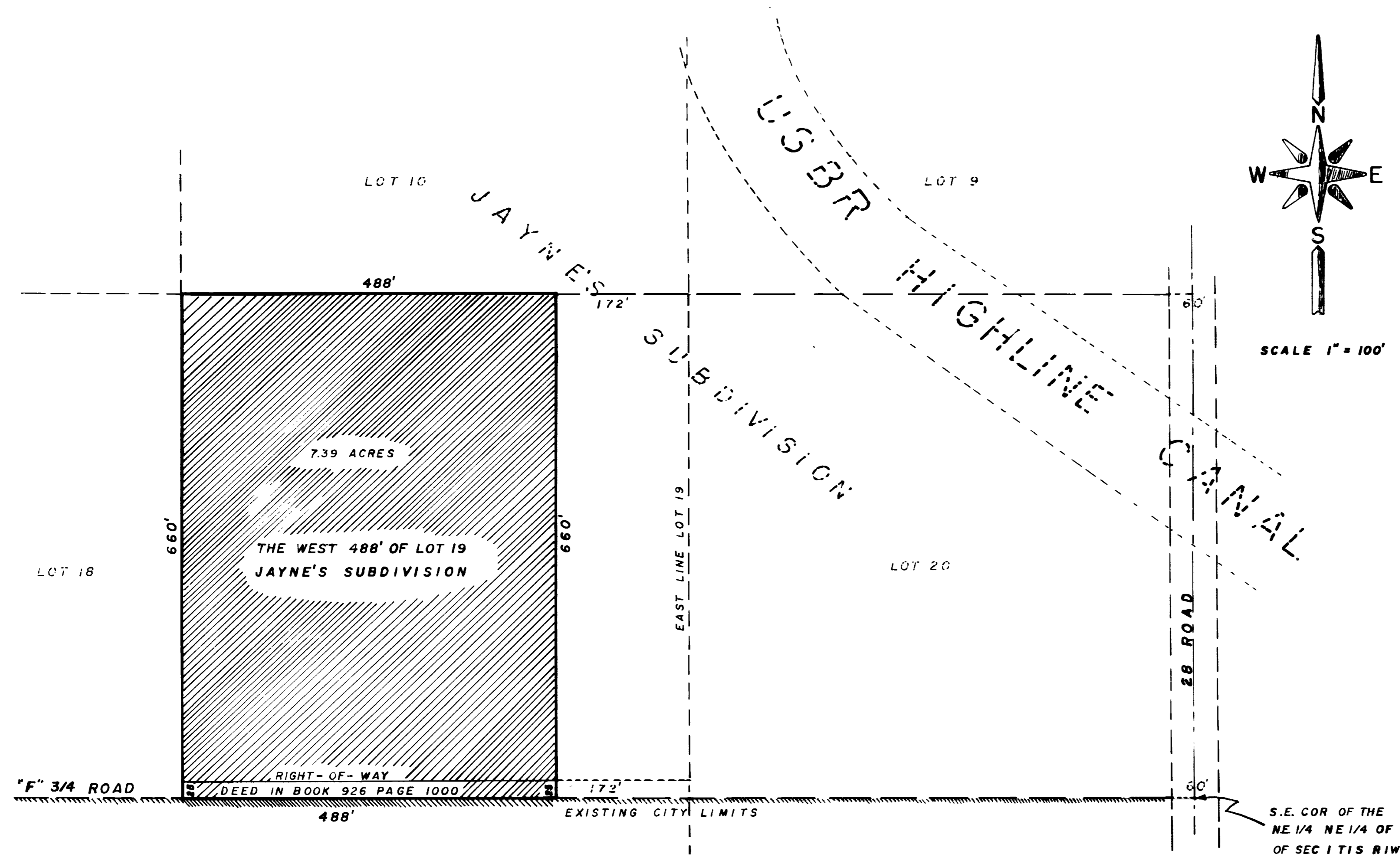


WALDROP ANNEXATION

SECTION 1, TOWNSHIP 1 SOUTH, RANGE 1 WEST, UTE MERIDIAN, MESA COUNTY COLORADO.



DESCRIPTION

THE WEST 488' FEET OF LOT 19 OF JAYNE'S SUBDIVISION. IN SECTION 1, TOWNSHIP 1 SOUTH RANGE 1 WEST UTE MERIDIAN, MESA COUNTY, COLORADO.

LEGEND

BOUNDARY OF EXISTING CITY LIMITS 
 BOUNDARY OF NEW CITY LIMITS 

AREA OF ANNEXATION

EXISTING BOUNDARY CONTIGUOUS TO CITY LIMITS	488 FT
PERIMETER OF AREA TO BE ANNEXED	2,296 FT
TOTAL ANNEXED AREA IN SQUARE FEET	322,080 SQ FT
ACREAGE	7.39 ACRES

ENGINEER'S CERTIFICATE

I GUSTAV A. BYROM A REGISTERED ENGINEER DO HEREBY CERTIFY THAT THE ACCOMPANYING PLAT AND LEGAL DESCRIPTION OF WALDROP ANNEXATION WAS PREPARED UNDER MY DIRECT SUPERVISION FROM INFORMATION SECURED FROM OFFICES OF MESA COUNTY CLERK AND RECORDER AND MESA COUNTY ASSESSOR.

NORTH PEACH ANNEXATION
 ORDINANCE NO 1415
 ANNEXED FEB 9, 1972

ORDINANCE NO 1487
 EFFECTIVE DATE FEBRUARY 6, 1974

SIGNED Gustav A. Byrom
 DATE 6 - FEBRUARY - 1974

FILE NO 01 430