

APOLLO PARK ANNEXATION

LEGAL DESCRIPTION

Part of the West 1/2 of Section 10 T1S R1W Ute Meridian

More particularly described as: Beginning at the NE corner of the NE 1/4 of the SW 1/4 of Section 10, T1S, R1W Ute Meridian, and considering the East line of said SW 1/4 of Section 10 to bear South with all bearings herein being relative thereto; thence South along said East line 1012.20 feet; thence S 89°55'38" W 328.68 feet, thence S 00°00'46" E 306.00 feet to the South line of said NE 1/4, SE 1/4, thence S 89°55'38" W along said South line 657.21 feet; thence N.00°02'19" W 1317.97 feet to the North line of said NE 1/4, SW 1/4, thence N89°54'50" E along said North line 986.71 feet to the Point of Beginning. EXCEPT Independent Avenue R.O.W on the South.

and

Beginning at the center of Section 10 T1S, R1W, Ute Meridian, thence North 397.50 feet, thence N 89°55' W 701.45 feet, thence S 00°11' E 397.50 feet to the South line of the SE 1/4, NW 1/4 said Section 10, thence East along said South line to the Point of beginning, also R.O.W. for 25 1/2 Road on the East.

LEGEND

Boundary of existing corporate limits _____
 Boundary of new corporate limits _____

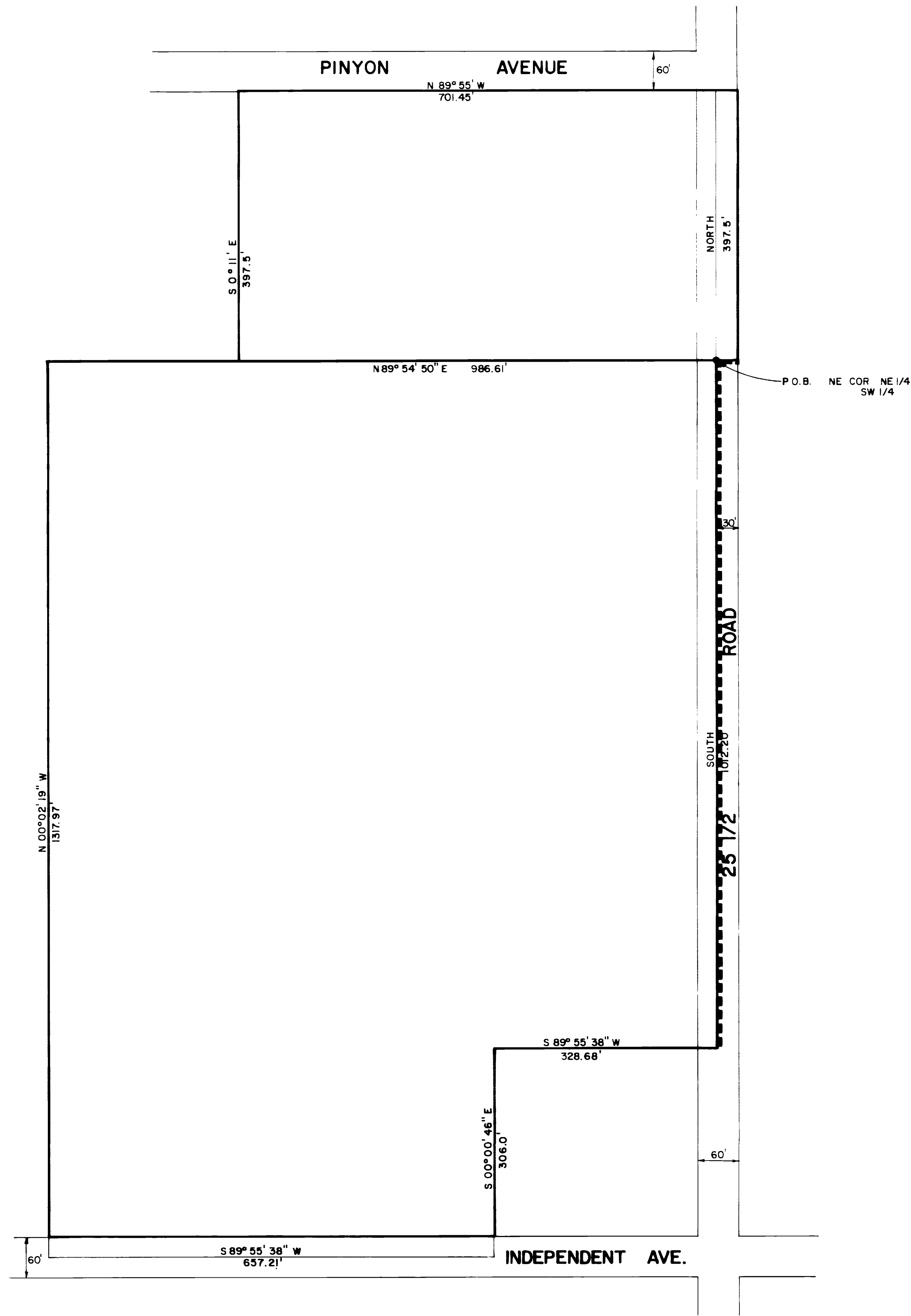
AREA OF ANNEXATION

Perimeter of area to be annexed _____ approx. 5,463 feet
 Boundary contiguous to corporate limits _____ 1,042 feet
 Annexed area in acres _____ approx. 34 acres

ENGINEER'S CERTIFICATE

I, Ronald P. Rish a Registered Professional Engineer do hereby certify that the accompanying plat and legal description of Apollo Park Annexation was compiled under my direct supervision from information received from the Mesa County Assessor's Office.

SIGNED Ronald P. Rish DATE July 25, 1978
 ORDINANCE N^o 1756 EFFECTIVE DATE 9-3-78



DESCRIPTION	DATE	DRAWN BY	DATE	SCALE
REVISION Δ		DJB	7-25-78	PLAN
REVISION Δ		CHECKED BY		HORIZ. 1"=100'
REVISION Δ		APPROVED BY		PROFILE
REVISION Δ		FIELD BOOK NO.		HORIZ.
		PAGE		VERT.

DEPARTMENT OF PUBLIC WORKS AND UTILITIES
 ENGINEERING DIVISION
 CITY OF GRAND JUNCTION, COLORADO

APOLLO PARK ANNEXATION

SHEET NO. 1
 OF 1
 FILE NO. 01-576