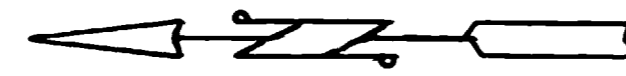


WESTGATE ANNEXATION



DESCRIPTION

Part of the NW 1/4 of Section 10 T1S, R1W of the Ute Meridian

More particularly described as: The East 1/2 of the West 1/2 of the NW 1/4 of Section 10, T1S, R1W, Ute Meridian lying North of road R.O.W. recorded in Book 909 at Page 647, Mesa County Records, except R.O.W. for "F" Road on the North.

LEGEND

Boundary of existing Corporate limits _____
 Boundary of new Annexation _____

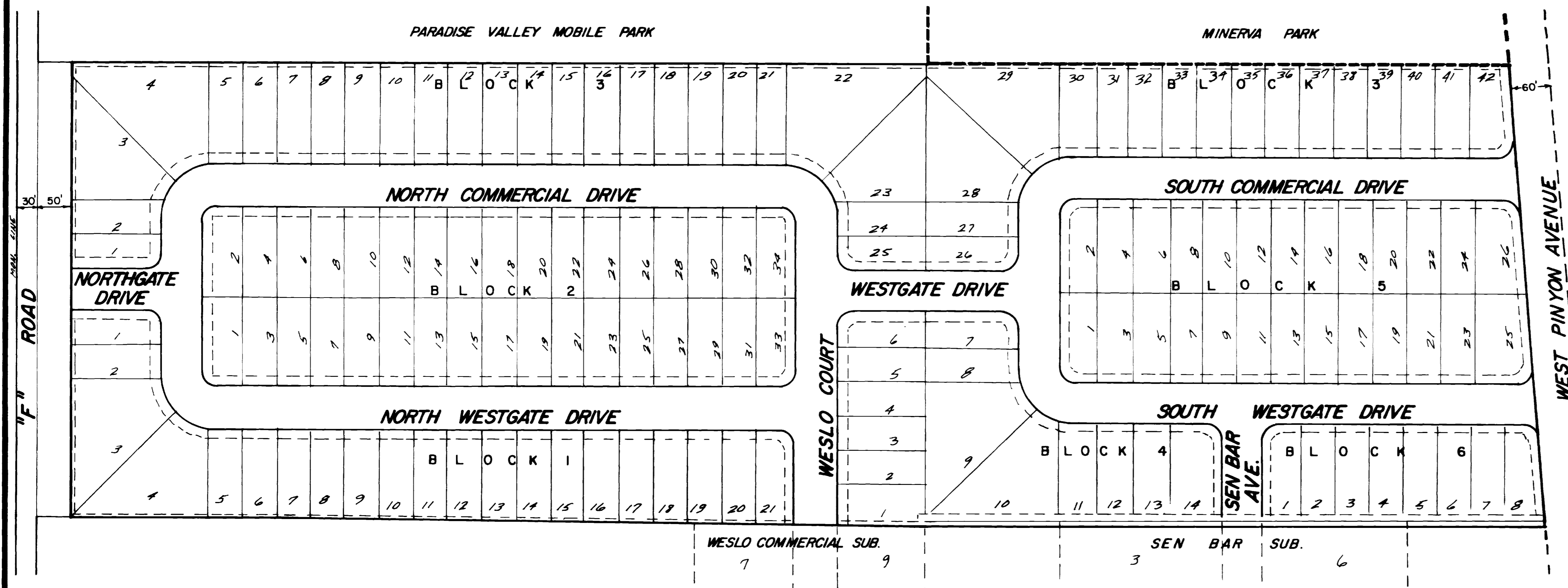
AREA OF ANNEXATION

Boundary contiguous to existing limits _____ approx. 900 feet
 Boundary of Annexation (perimeter) _____ approx. 3,190 feet
 Area of Annexation _____ approx. 14 acres

ENGINEER'S CERTIFICATE

I, Ronald P. Rish a Registered Professional Engineer, do certify that the accompanying plat and legal description of Westgate Annexation was compiled under my direct supervision from information received from the Mesa County Assessor's office.

SIGNED Ronald P. Rish DATE Oct. 12, 1978
 ORDINANCE NO. 1768 EFFECTIVE DATE 11-5-78



REVISION	DESCRIPTION	DATE	DRAWN BY	DATE	SCALE
REVISION			APB	9-28-78	PLAN
REVISION					HORIZ. 1" = 100'
REVISION					PROFILE
REVISION					HORIZ.
					VERT.

DEPARTMENT OF PUBLIC WORKS AND UTILITIES
 ENGINEERING DIVISION
 CITY OF GRAND JUNCTION, COLORADO

WESTGATE ANNEXATION

SHEET NO.	1
OF	1
FILE NO.	01-565