

TREECE ANNEXATION

DESCRIPTION

Part of the West 1/2 of the East 1/2 of Section 36 T1N, R1W, Ute Meridian

More particularly described as beginning at a point which bears N 89° 48' 30" E 294.02 feet; thence N 31° 22' 30" E 107.3 feet; thence N 27° 20' E 432.0 feet from the SW corner of the NW 1/4, SE 1/4, Section 36 T1N, R1W, Ute Meridian. Thence N 27° 20' E along the Westerly R.O.W. line of Horizon Drive 213.76 feet to a point on the Southerly R.O.W. line of I-70; thence along said R.O.W. the following courses: N 21° 18' 26" W 495.89 feet; thence N 32° 59' 09" W 240.10 feet; thence N 39° 24' 02" W 75.0 feet; thence N 42° 00' 08" W 74.44 feet; thence N 44° 52' 04" W 309.32' feet; thence N 55° 39' 51" W 31.97 feet to a point on the West line of the NE 1/4 of said Section 36; thence S 0° 15' 05" E along said West line 363.80 feet to the SW corner of the NE 1/4 of Section 36; thence S 0° 13' 42" E along the West line of the SE 1/4 of said Section 36 658.42 feet to the NW corner SW 1/4 NW 1/4 SE 1/4 of said Section 36; thence N 89° 46' 08" E along the North line of said SW 1/4 NW 1/4 SE 1/4 329.81 feet to the NE corner of the W 1/2 SW 1/4 NW 1/4 SE 1/4; thence S 0° 13' 42" E along the East line of the W 1/2 SW 1/4 NW 1/4 SE 1/4 68.97 feet; thence S 62° 40' 00" E 248.20 feet to the point of beginning. ALSO adjacent R.O.W. for I-70 and Horizon Drive.

LEGEND

Boundary of existing corporate limits _____
 Boundary of new corporate limits _____

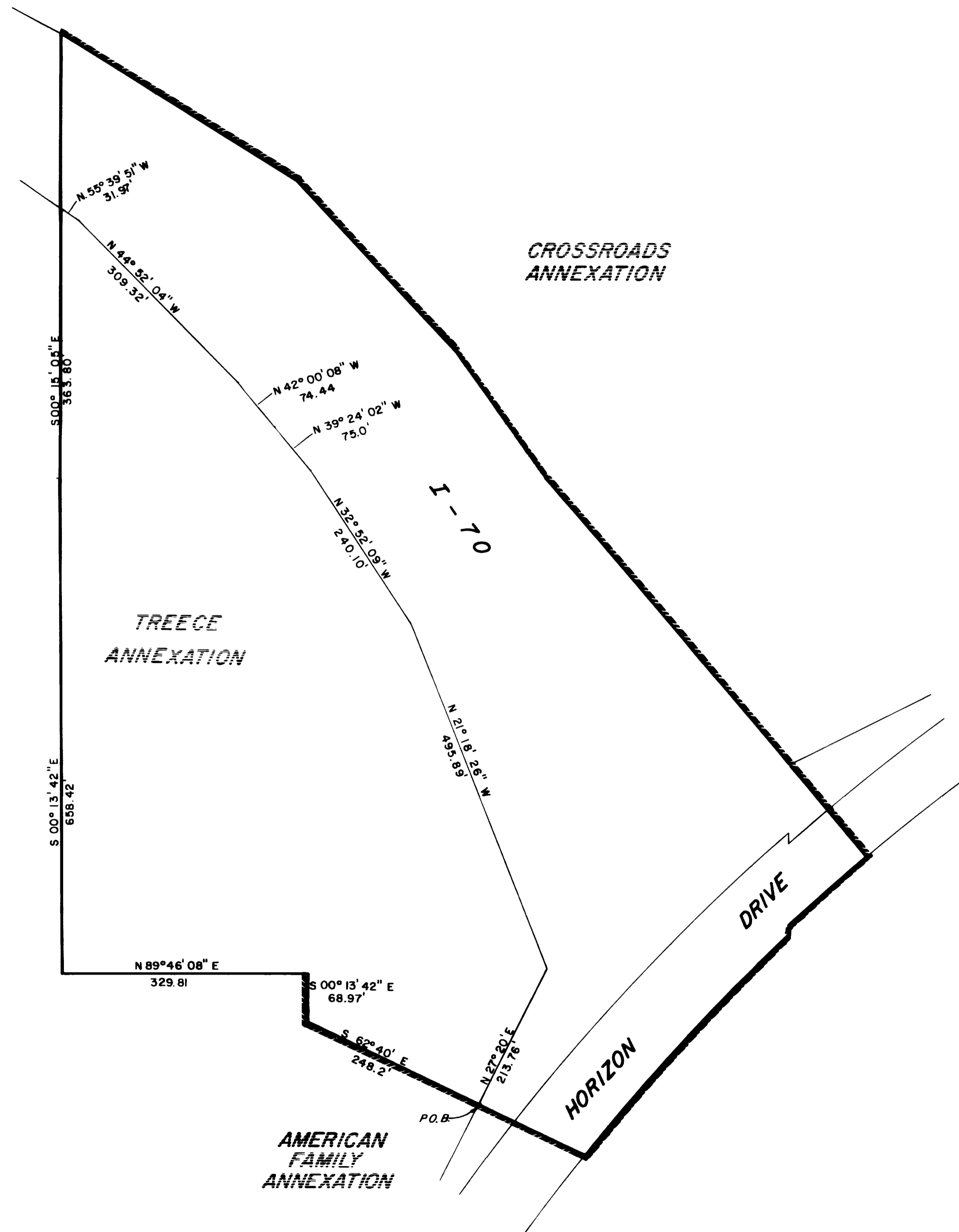
AREA OF ANNEXATION

Perimeter of area to be annexed _____ approx. 3810 feet
 Boundary contiguous to corporate limits _____ approx. 2460 feet
 Area of annexation (excluding road R.O.W.) _____ approx. 10 acres

ENGINEER'S CERTIFICATE

I, Ronald P. Rish a Registered Professional Engineer do hereby certify that the accompanying plat and description of Treece Annexation was compiled from information obtained from the Horizon / 70 Subdivision Plat.

SIGNED Ronald P. Rish DATE 8-17-78
 ORDINANCE No. 1759 EFFECTIVE DATE 9-17-78



REVISION Δ	DESCRIPTION	DATE	DRAWN BY <u>DJB</u>	DATE <u>8-15-78</u>
REVISION Δ			CHECKED BY _____	DATE _____
REVISION Δ			APPROVED BY _____	DATE _____
REVISION Δ			FIELD BOOK NO. _____	PAGE _____

DEPARTMENT OF PUBLIC WORKS AND UTILITIES
ENGINEERING DIVISION
CITY OF GRAND JUNCTION, COLORADO

TREECE ANNEXATION

SHEET NO. <u>1</u>
OF <u>1</u>
FILE NO. <u>21-562</u>