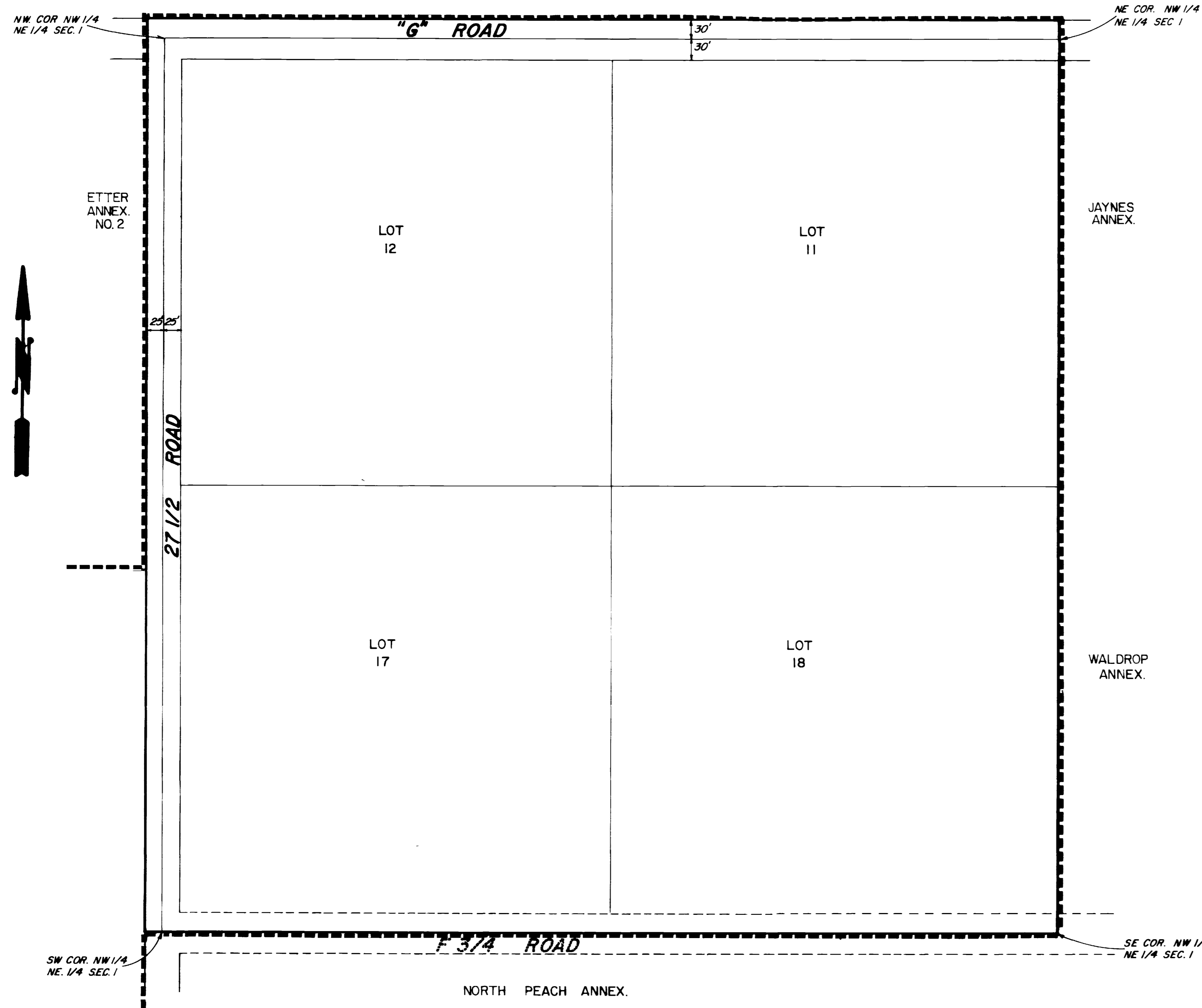


JONES - SCHINDEL ANNEXATION

PARTEE HEIGHTS ANNEX.



DESCRIPTION

The NW 1/4 of the NE 1/4 of Section 1 T1S, R1W of the Ute Meridian, the same being Lots 11, 12, 17, and 18 of Jaynes Subdivision in Mesa County, Colorado, together with the R.O.W. for G Road on the North, 27 1/2 Road on the West, and F 3/4 Road on the South.

LEGEND

Boundary of existing corporate limits —————
 Boundary of new corporate limits —————

AREA OF ANNEXATION

Perimeter of area to be annexed ————— approx. 5,390 feet
 Boundary contiguous to corporate limits ————— approx. 4,850 feet
 Area of annexation ————— approx. 42 acres

ENGINEER'S CERTIFICATE

I, Ronald P. Rish a Registered Professional Engineer do hereby certify that the accompanying plat and legal description of Jones-Schindel Annex was compiled under my direct supervision from information secured from the Mesa County Assessor's Office.

SIGNED Ronald P. Rish DATE 8-8-78
 ORDINANCE NO. 1758 EFFECTIVE DATE 9-3-78

DESCRIPTION	DATE	DRAWN BY <u>DJB</u>	DATE <u>7-31-78</u>	SCALE
REVISION Δ		CHECKED BY	DATE	PLAN PROFILE
REVISION Δ		APPROVED BY	DATE	HORIZ. VERT.
REVISION Δ		FIELD BOOK NO.	PAGE	

DEPARTMENT OF PUBLIC WORKS AND UTILITIES
 ENGINEERING DIVISION
 CITY OF GRAND JUNCTION, COLORADO

JONES-SCHINDEL ANNEXATION
 SHEET NO. 1
 OF 1
 FILE NO.