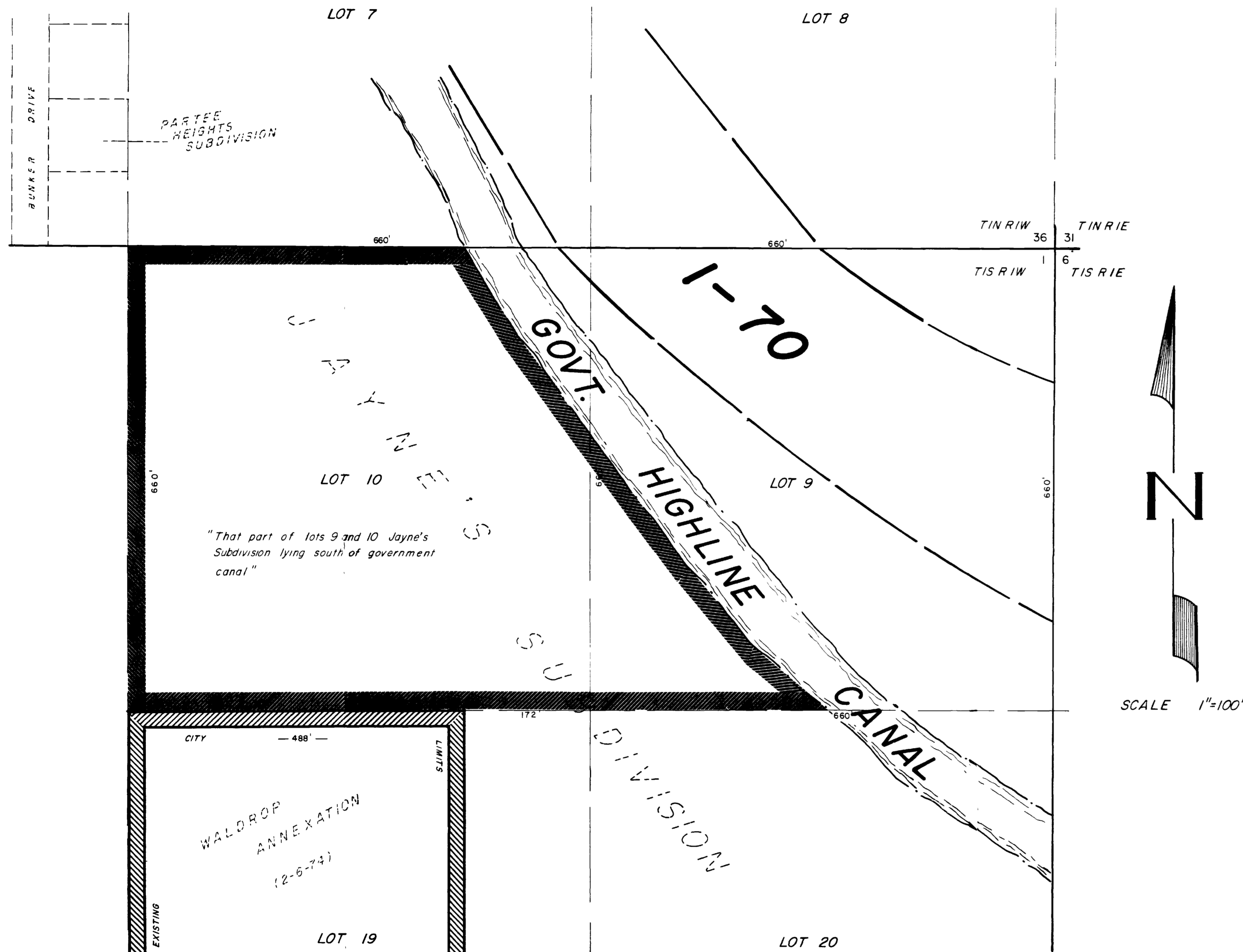


JAYNES ANNEXATION NO. 1



DESCRIPTION

THAT PART OF LOTS 9 AND 10 JAYNE'S SUBDIVISION SECTION 1, TOWNSHIP 1 SOUTH RANGE 1 WEST OF THE UTE MERIDIAN LYING SOUTH OF THE GOVERNMENT HIGHLINE CANAL, IN MESA COUNTY, COLORADO

LEGEND

BOUNDARY OF EXISTING CITY LIMITS — 
 BOUNDARY OF NEW CITY LIMITS — 

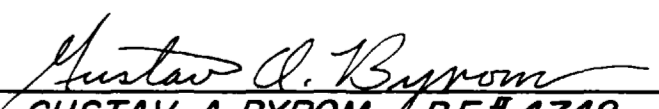
AREA OF ANNEXATION

EXISTING BOUNDARY CONTIGUOUS TO CITY LIMITS — 488 FT.
 PERIMETER OF AREA TO BE ANNEXED — 2,924 FT.
 TOTAL ANNEXED AREA IN SQUARE FEET — 472,500 SQ. FT.
 TOTAL ANNEXED AREA IN ACRES — 10.85 ACRES

ENGINEER'S CERTIFICATE

I GUSTAV A. BYROM A REGISTERED ENGINEER DO HEREBY CERTIFY THAT THE ACCOMPANYING PLAT AND LEGAL DESCRIPTION OF JAYNES ANNEXATION NO.1 WAS PREPARED UNDER MY DIRECT SUPERVISION FROM INFORMATION SECURED FROM OFFICES OF MESA COUNTY CLERK AND RECORDER AND MESA COUNTY ASSESSOR.

ORDINANCE NO. 1489
 EFFECTIVE DATE 2-20-74

SIGNED 
 GUSTAV A. BYROM P.E. # 4748
 DATE February 20, 1974