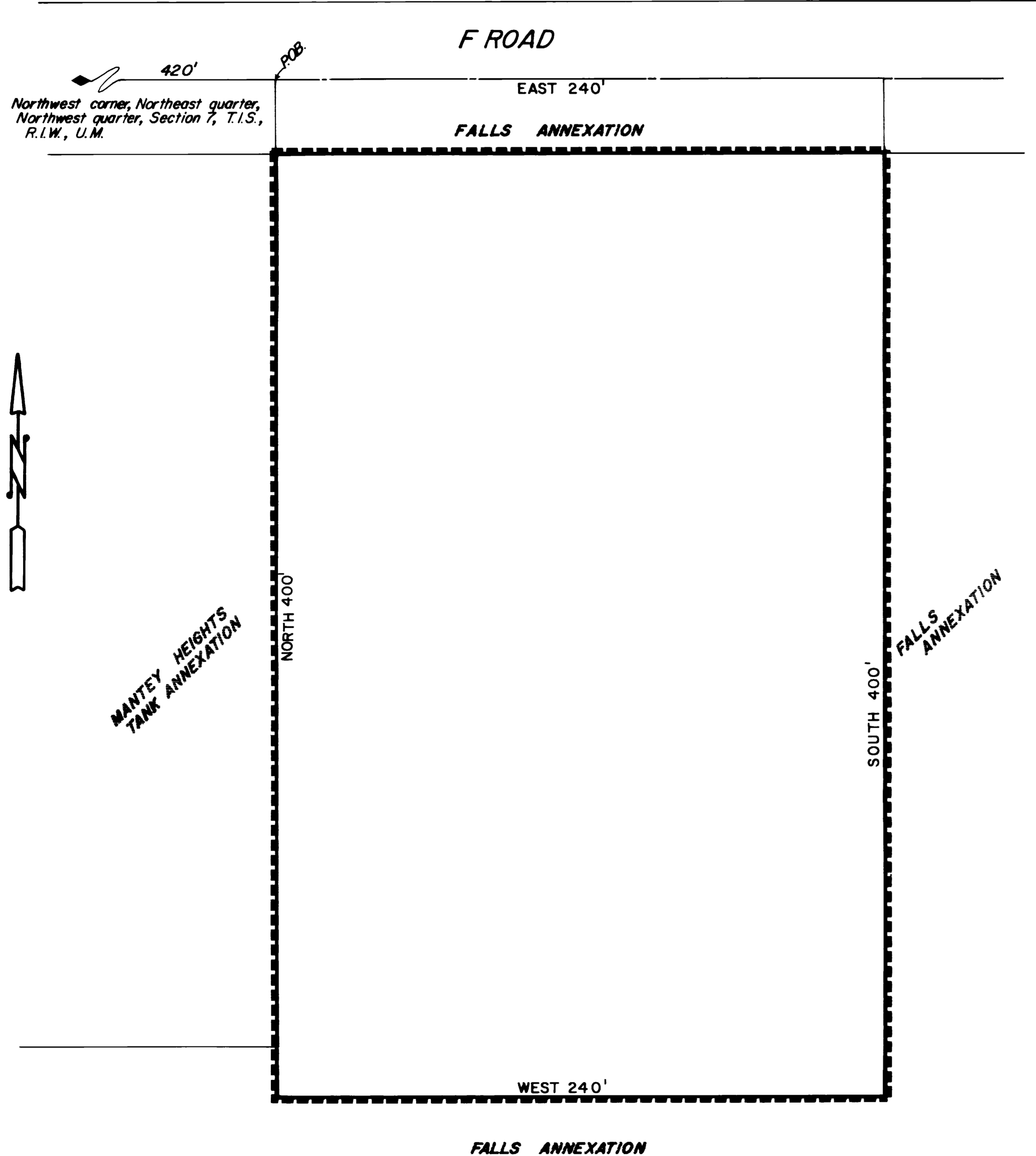


FALLS ENCLAVE ANNEXATION



DESCRIPTION

Part of the Northeast quarter (NE 1/4) of the (NW 1/4) of Section 7, Township 1 South, Range 1 East, Ute Meridian.

More particularly described as follows: Commencing at a point 420 feet East of the Northwest corner (N.W. cor.) of the Northeast quarter (N.E. 1/4) of the Northwest quarter (N.W. 1/4), Section 7, Township 1 South, Range 1 East, Ute Meridian; thence East 240 feet, thence South 400 feet, thence West 240 feet, thence North 400 feet to the point of beginning.

LEGEND

- Boundary of existing corporate limits -----
- Boundary of new corporate limits _____

AREA OF ANNEXATION

- Boundary contiguous to existing corporate limits _____ approx. 1220 ft
- Perimeter of area to be annexed _____ approx. 1220 ft
- Total annexed area in acres _____ approx. 2

ENGINEER'S CERTIFICATE

I, Ronald P. Rish, City Engineer, do hereby certify that the accompanying plat and description of Falls Enclave Annexation was compiled under my direct supervision from existing public records.

Ronald P. Rish
RONALD P. RISH P.E.

11-13-79
DATE

1845
ORDINANCE NO.

12-9-79
EFFECTIVE DATE

REVISION	DESCRIPTION	DATE	DRAWN BY	DATE	SCALE
REVISION Δ			<i>D. Bowman</i>	10-9-79	PLAN
REVISION Δ			CHECKED BY	DATE	PROFILE
REVISION Δ			APPROVED BY	DATE	HORIZ. 1" = 30'
REVISION Δ			FIELD BOOK NO.	PAGE	VERT.

DEPARTMENT OF PUBLIC WORKS AND UTILITIES
ENGINEERING DIVISION
CITY OF GRAND JUNCTION, COLORADO

FALLS ENCLAVE ANNEXATION

SHEET NO. <u>1</u>
OF <u>1</u>
FILE NO. <u>01-615</u>