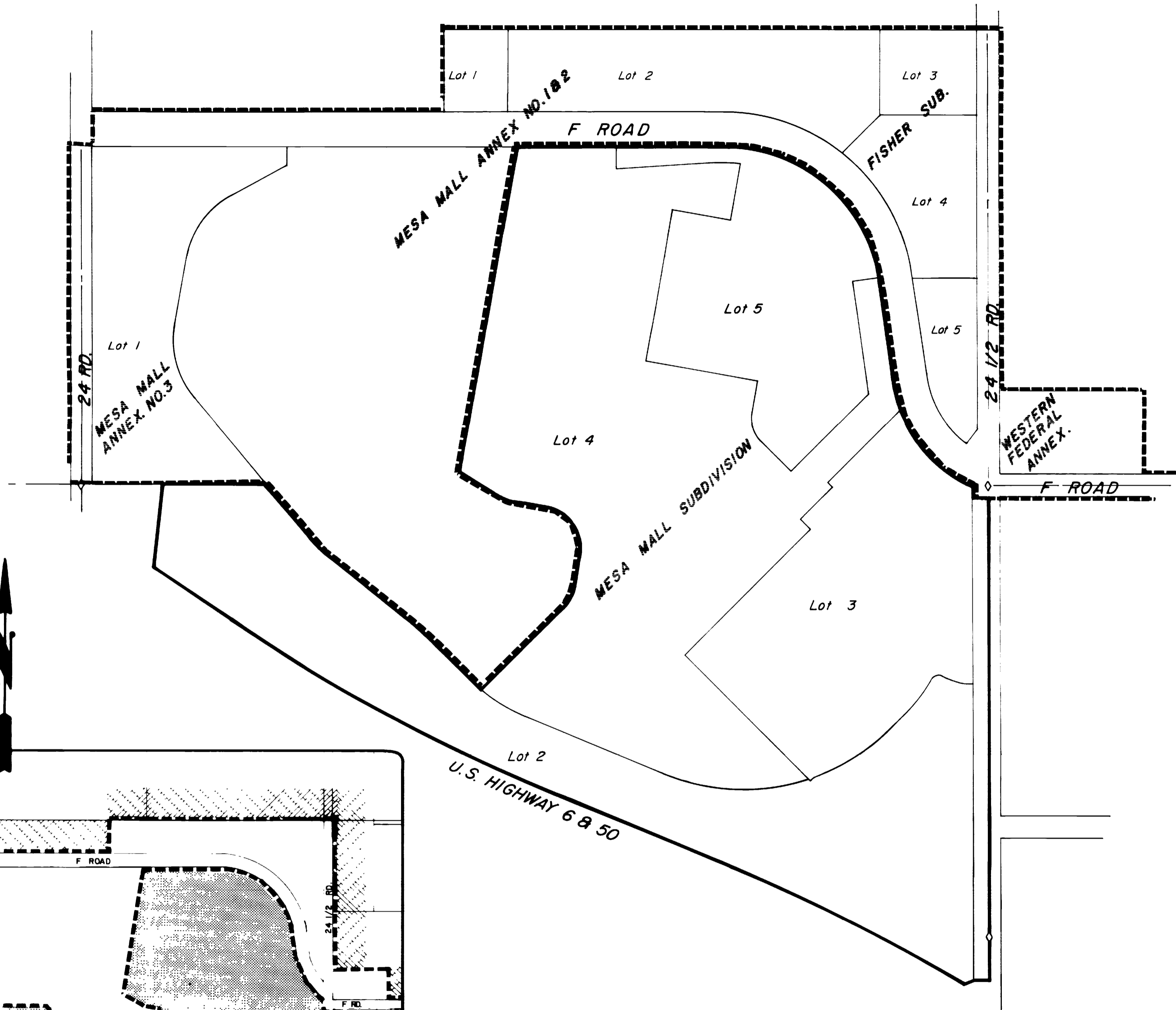


# MESA MALL ANNEXATION #4



## DESCRIPTION

That part of Sections 4 and 9, Township 1 South, Range 1 West, Ute Meridian, more particularly described as follows:  
 Lots 2,3,4, & 5 of Mesa Mall Subdivision, Mesa County, Colorado.  
 Together with 50 feet of right-of-way for 24 1/2 Road on the East adjacent to lots 2 & 3 of said Subdivision.

## LEGEND

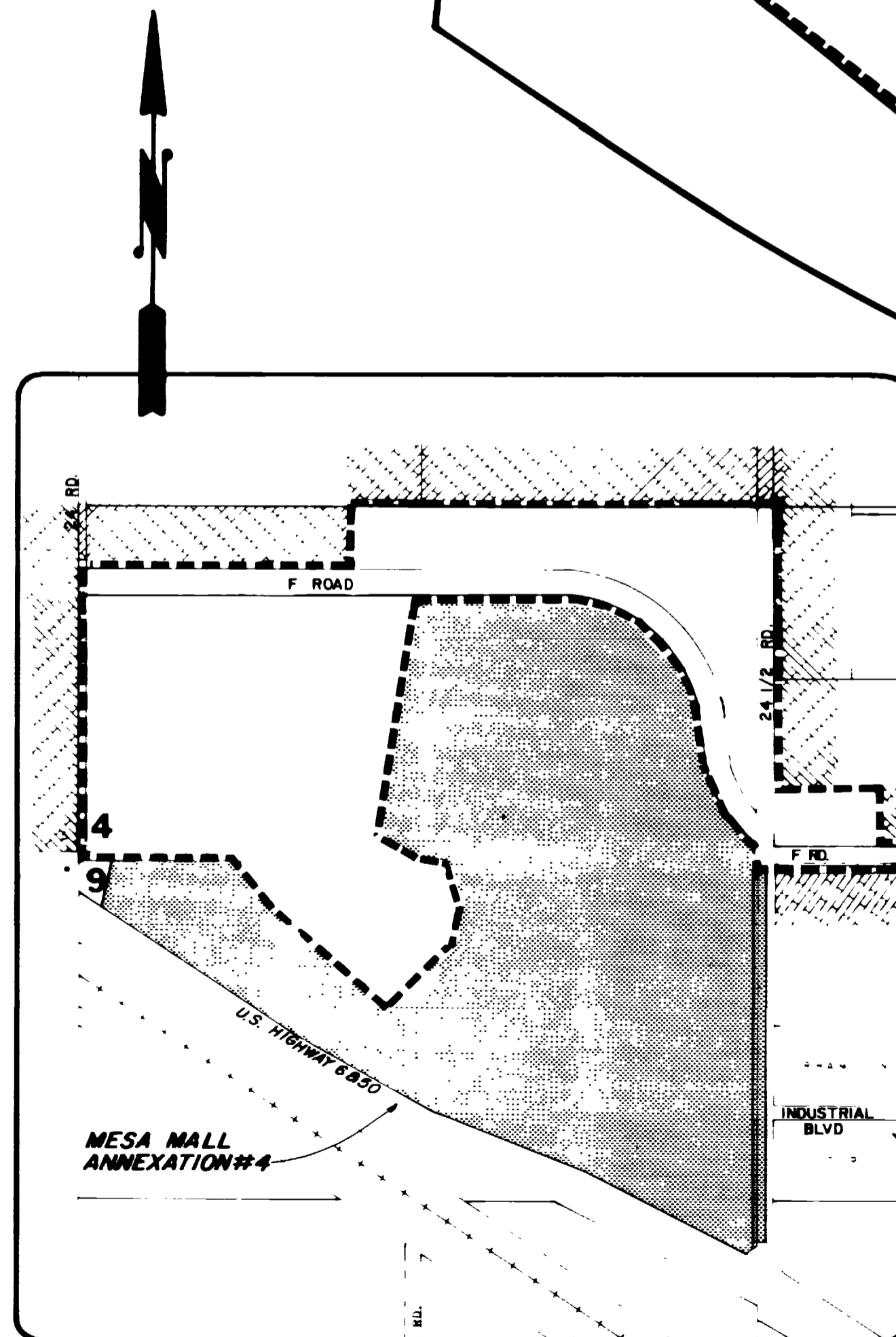
Boundary of existing corporate limits   
 Boundary of new corporate limits

## AREA OF ANNEXATION

Boundary contiguous to existing corporate limits  approx. 5425 ft.  
 Perimeter of area to be annexed  approx. 9780 ft.  
 Total annexed area in acres  approx. 69

1907  
 ORDINANCE NO.

9-21-80  
 EFFECTIVE DATE



LOCATION MAP

REVISION	DESCRIPTION	DATE	DRAWN BY	DATE	SCALE
REVISION			CHECKED BY <i>D.W.</i>	DATE 9-3-80	PLAN 1"=200'
REVISION			APPROVED BY	DATE	PROFILE
REVISION			FIELD BOOK NO.	PAGE	HORIZ. VERT.

**DEPARTMENT OF PUBLIC WORKS AND UTILITIES**  
**ENGINEERING DIVISION**  
**CITY OF GRAND JUNCTION, COLORADO**

MESA MALL ANNEXATION #4

SHEET NO. _____
OF _____
FILE NO. <i>01-660</i>