

MESA MALL ANNEXATION #3

DESCRIPTION

That part of the Southwest quarter (S.W. 1/4) of Section 4, Township 1 South, Range 1 West, Ute Meridian. More particularly described as follows:
 Lot 1 of Mesa Mall Subdivision, recorded in Plat Book no. 12, page 233, Mesa County Clerk & Recorder's Office. Also, that right-of-way for 24 Road on the West. (March, 1980)

LEGEND

Boundary of existing corporate limits ——— - - - - -
 Boundary of new corporate limits ——— ———

AREA OF ANNEXATION

Boundary contiguous to existing corporate limits ——— approx. 1790 ft.
 Perimeter of area to be annexed ——— approx. 3420 ft.
 Total annexed area in acres ——— approx. 9.3

ENGINEER'S CERTIFICATE

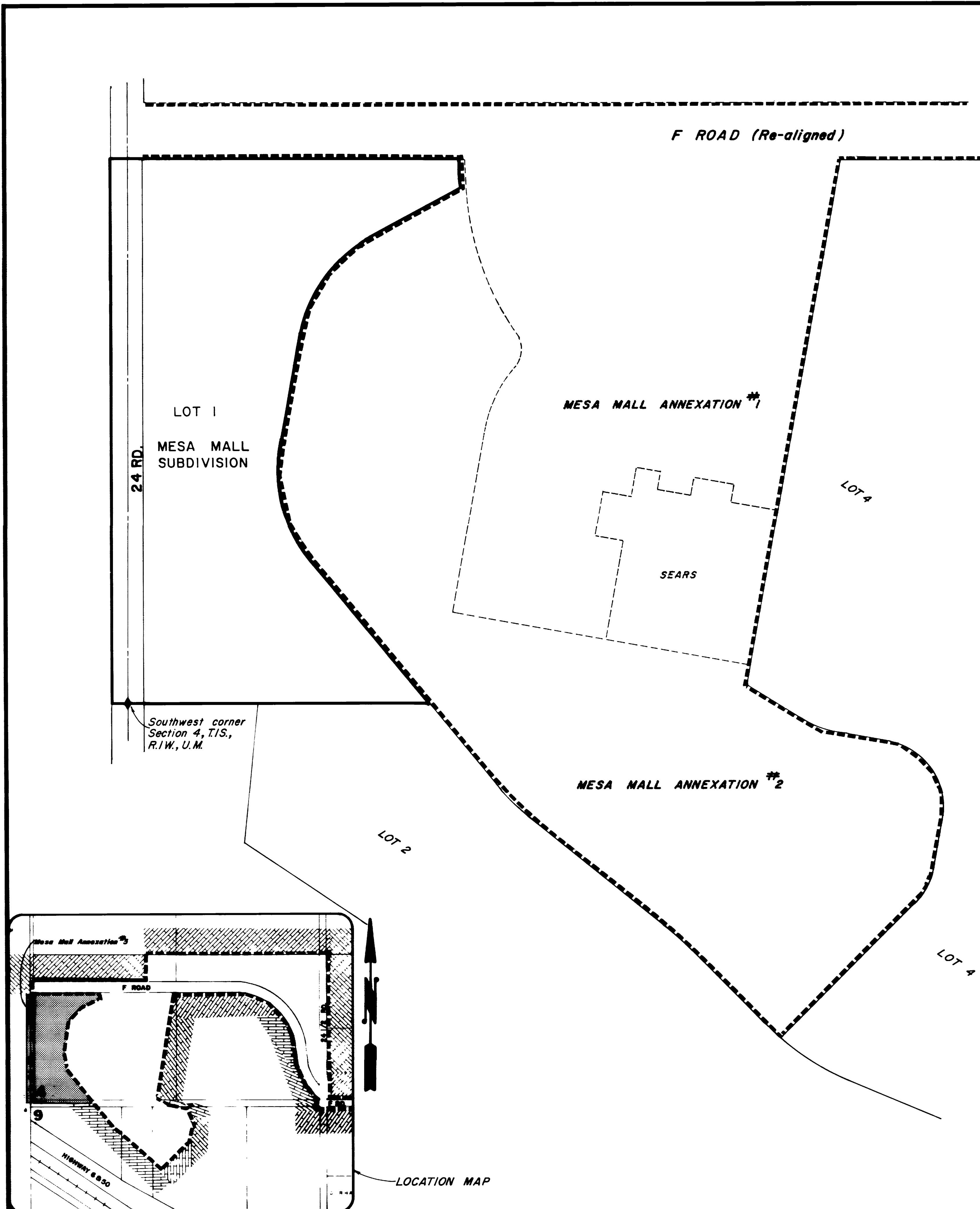
I, Ronald P. Rish, City Engineer, do hereby certify that the accompanying plat and description of Mesa Mall Annexation #3 was compiled under my direct supervision from existing public records.

Ronald P. Rish
 RONALD P. RISH PE.

4-4-80
 DATE

1875
 ORDINANCE NO.

APRIL 20, 1980
 EFFECTIVE DATE



REVISION	DESCRIPTION	DATE	DRAWN BY	DATE	SCALE
REVISION Δ			<i>D. Bowman</i>	3-13-80	PLAN: 1"=100'
REVISION Δ			CHECKED BY	DATE	PROFILE
REVISION Δ			APPROVED BY	DATE	HORIZ.
REVISION Δ			FIELD BOOK NO.	PAGE	VERT.

DEPARTMENT OF PUBLIC WORKS AND UTILITIES
 ENGINEERING DIVISION
 CITY OF GRAND JUNCTION, COLORADO

MESA MALL ANNEXATION #3

SHEET NO.	1
OF	1
FILE NO.	01-624