

# MC KEE ANNEXATION

## DESCRIPTION

That part of the Northwest quarter (N.W. 1/4) of Section 3, Township 1 South, Range 1 West, Ute Meridian. More particularly described as follows:

Beginning at the West quarter corner (W. 1/4 cor.) of said Section 3, thence South 89°57' East 659.85 ft., thence North 00°01' West 980.2' ft., thence South 74°27' West 400 ft., thence South 64°16' West 141.0 ft., thence West 147.2 ft., thence South 811.2 ft. to the point of beginning; Except the West 30 ft.

Together with that right-of-way for F 1/2 Rd. (May, 1980) on the South.

## LEGEND

Boundary of existing corporate limits ——— - - - - -  
 Boundary of new corporate limits ——— ———

## AREA OF ANNEXATION

Boundary contiguous to existing corporate limits ——— approx. 142 ft.  
 Perimeter of area to be annexed ——— approx. 3140 ft.  
 Total annexed area in acres ——— approx. 13.5

## ENGINEER'S CERTIFICATE

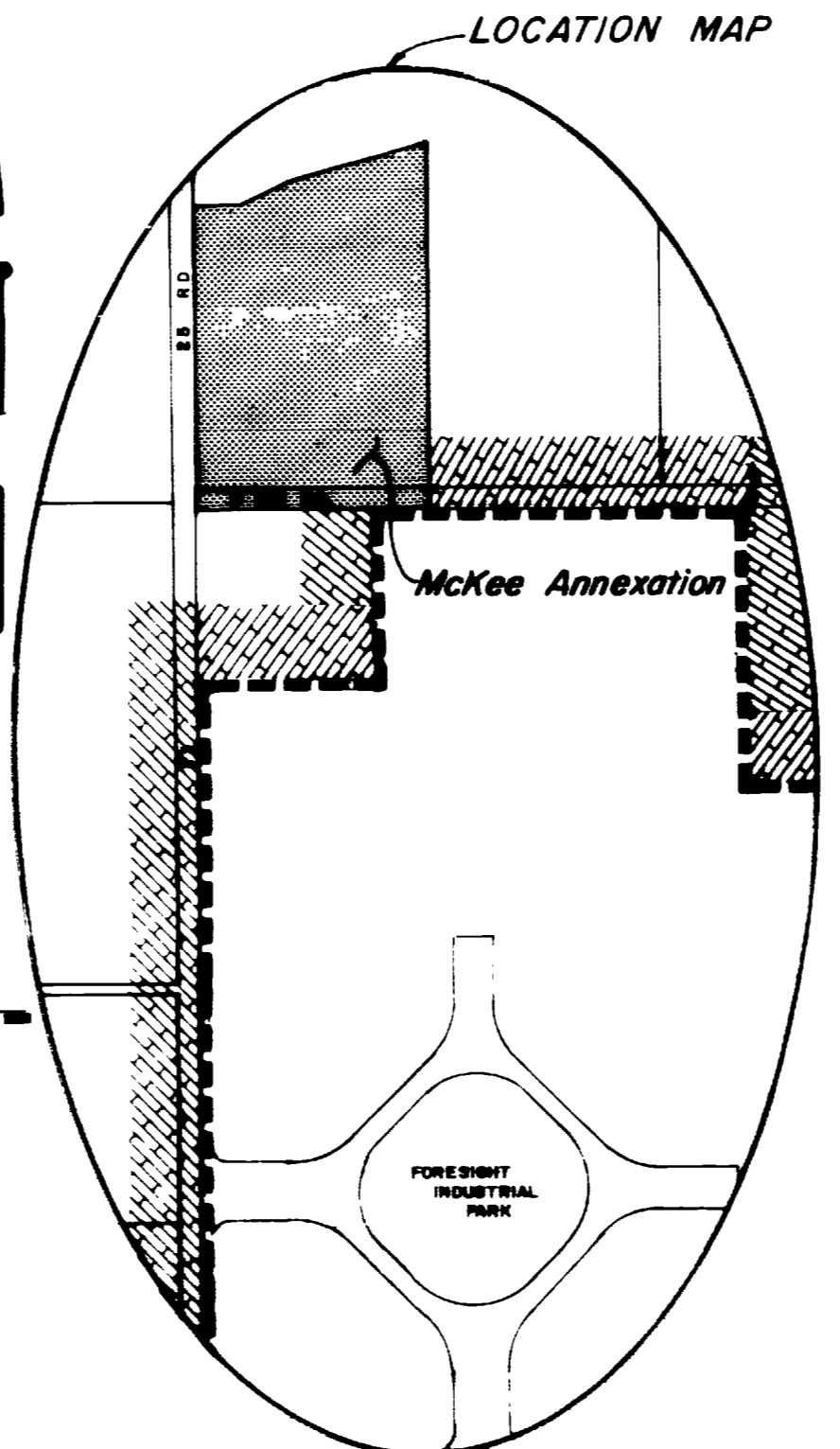
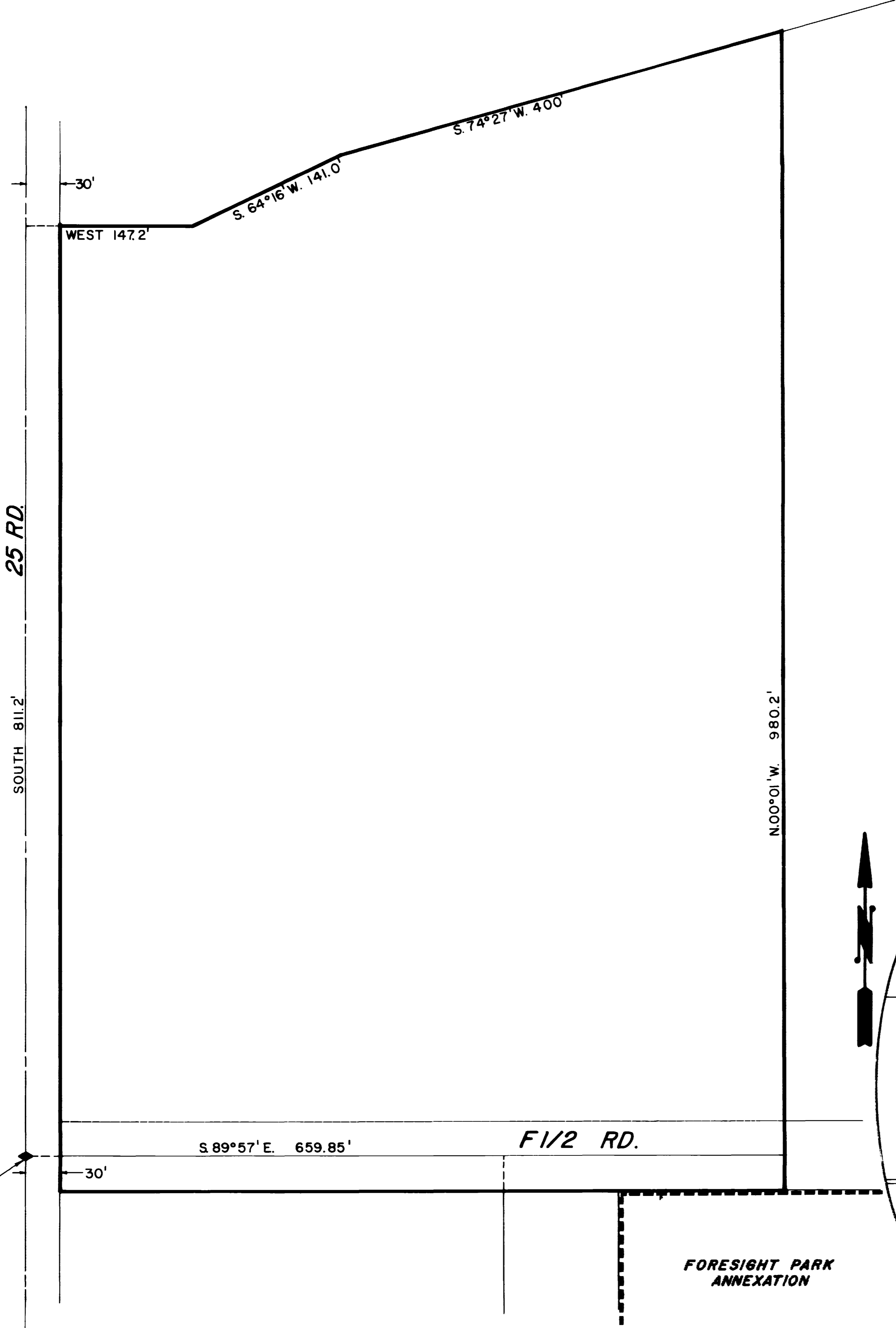
I, Ronald P. Rish, City Engineer, do hereby certify that the accompanying plat and description of McKee Annexation was compiled under my direct supervision from existing public records.

1886  
ORDINANCE NO.

6-22-80  
EFFECTIVE DATE

Ronald P. Rish  
RONALD P. RISH P.E.

6-22-80  
DATE



REVISION Δ	DESCRIPTION	DATE	DRAWN BY <u>D. Newman</u>	DATE <u>5-5-80</u>	SCALE
REVISION Δ			CHECKED BY	DATE	PLAN
REVISION Δ			APPROVED BY	DATE	HORIZ. <u>1"=60'</u>
REVISION Δ			FIELD BOOK NO.	PAGE	VERT.

**DEPARTMENT OF PUBLIC WORKS AND UTILITIES  
 ENGINEERING DIVISION  
 CITY OF GRAND JUNCTION, COLORADO**

*McKee Annexation*

SHEET NO.	_____
OF	_____
FILE NO.	<u>01-627</u>