

RUSTY SUN ANNEXATION

DESCRIPTION

A parcel of land located in the Southeast quarter of the Southeast quarter (S.E. 1/4 S.E. 1/4) of Section 6, Township 1 South, Range 1 West, Ute Meridian. More particularly described as follows:
 Beginning at the Southeast corner of said Section 6, thence N.89°51'17" W. 375.32 ft.; thence N.00°08'43" E. 50 ft.; thence along the arc of a curve to the left whose radius is 20 ft. and whose long chord bears N.44°51'17" W. 28.28 ft., thence N.00°08'43" E. 44.08 ft.; thence along the arc of a curve to the right whose radius is 475 ft. and whose long chord bears N.06°19'22" E. 102.23 ft.; thence N.12°30'00" E. 184.12 ft.; thence along the arc of a curve to the left whose radius is 755.48 ft. and whose long chord bears N.11°34'17" W. 24.49 ft.; thence S.86°22'25" E. 160.46 ft.; thence N.52°49'55" W. 12.66 ft.; thence N.23°20'46" W. 82.38 ft.; thence N.00°42'42" W. 180.36 ft.; thence N.05°07'41" W. 156.55 ft.; thence N.36°39'27" W. 84 ft.; thence N.11°52'03" W. 130.18 ft.; thence N.72°52'17" W. 292.01 ft.; thence N.40°23'17" W. 218.21 ft.; thence N.68°24'50" W. 110.05 ft.; thence S.89°49'56" E. 841.95 ft.; thence S.00°05'40" W. 1320 ft. to the point of beginning.

AREA OF ANNEXATION

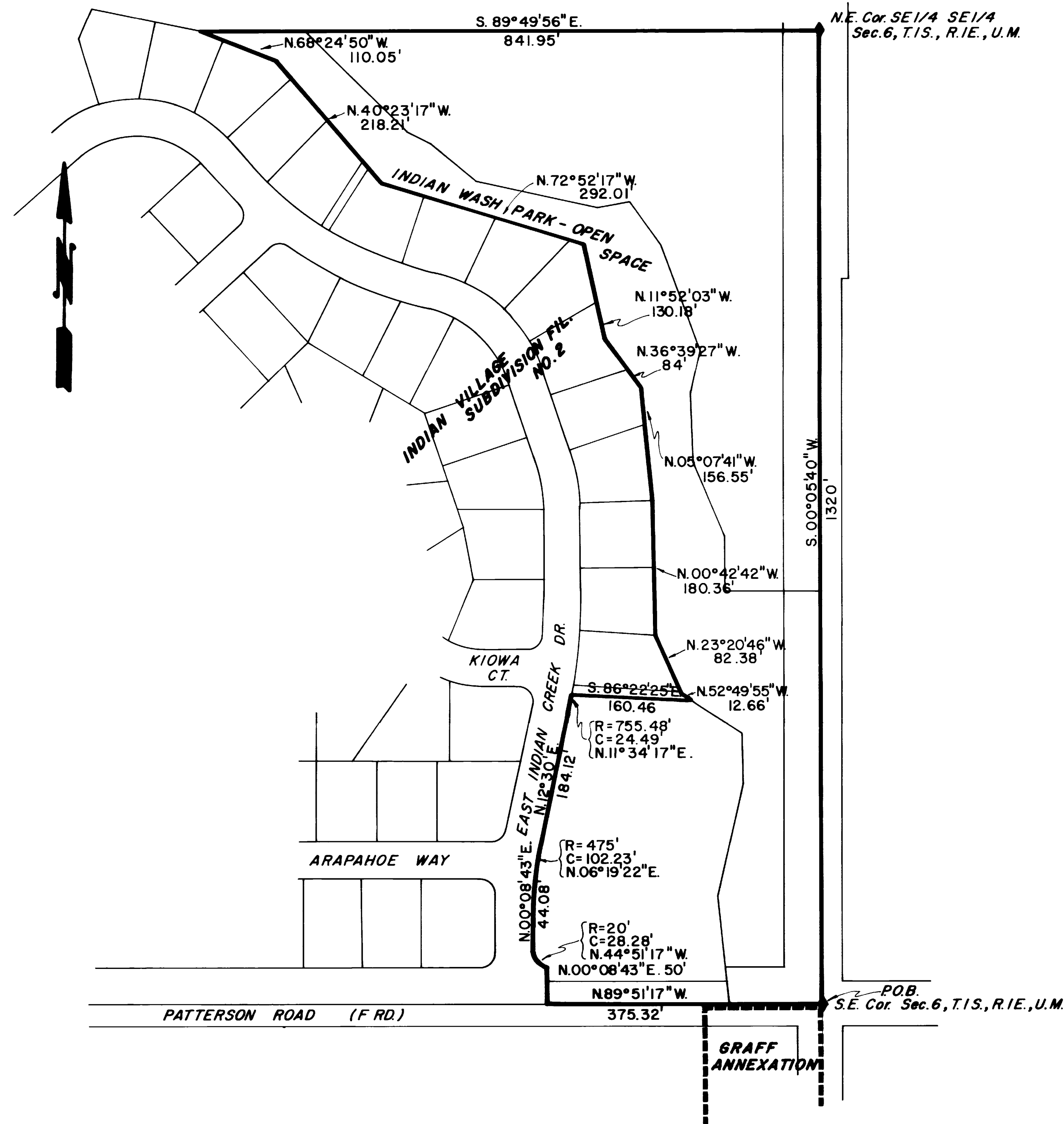
Boundary contiguous to existing corporate limits _____ approx. 165 ft.
 Perimeter of area to be annexed _____ approx. 4,400 ft.
 Total annexed area in acres _____ approx. 11.25

LEGEND

Boundary of existing corporate limits ————
 Boundary of new corporate limits ————

2006
ORDINANCE NO.

November 8, 1981
EFFECTIVE DATE



REVISION	DESCRIPTION	DATE	DRAWN BY	DATE	SCALE
REVISION			CHECKED BY <i>D.W.</i>	DATE <i>10-19-81</i>	PLAN PROFILE
REVISION			APPROVED BY	DATE	HORIZ. 1"=100' HORIZ.
REVISION			FIELD BOOK NO.	PAGE	VERT.

DEPARTMENT OF PUBLIC WORKS AND UTILITIES
 ENGINEERING DIVISION
 CITY OF GRAND JUNCTION, COLORADO

RUSTY SUN ANNEXATION

SHEET NO.	OF
FILE NO.	01-703