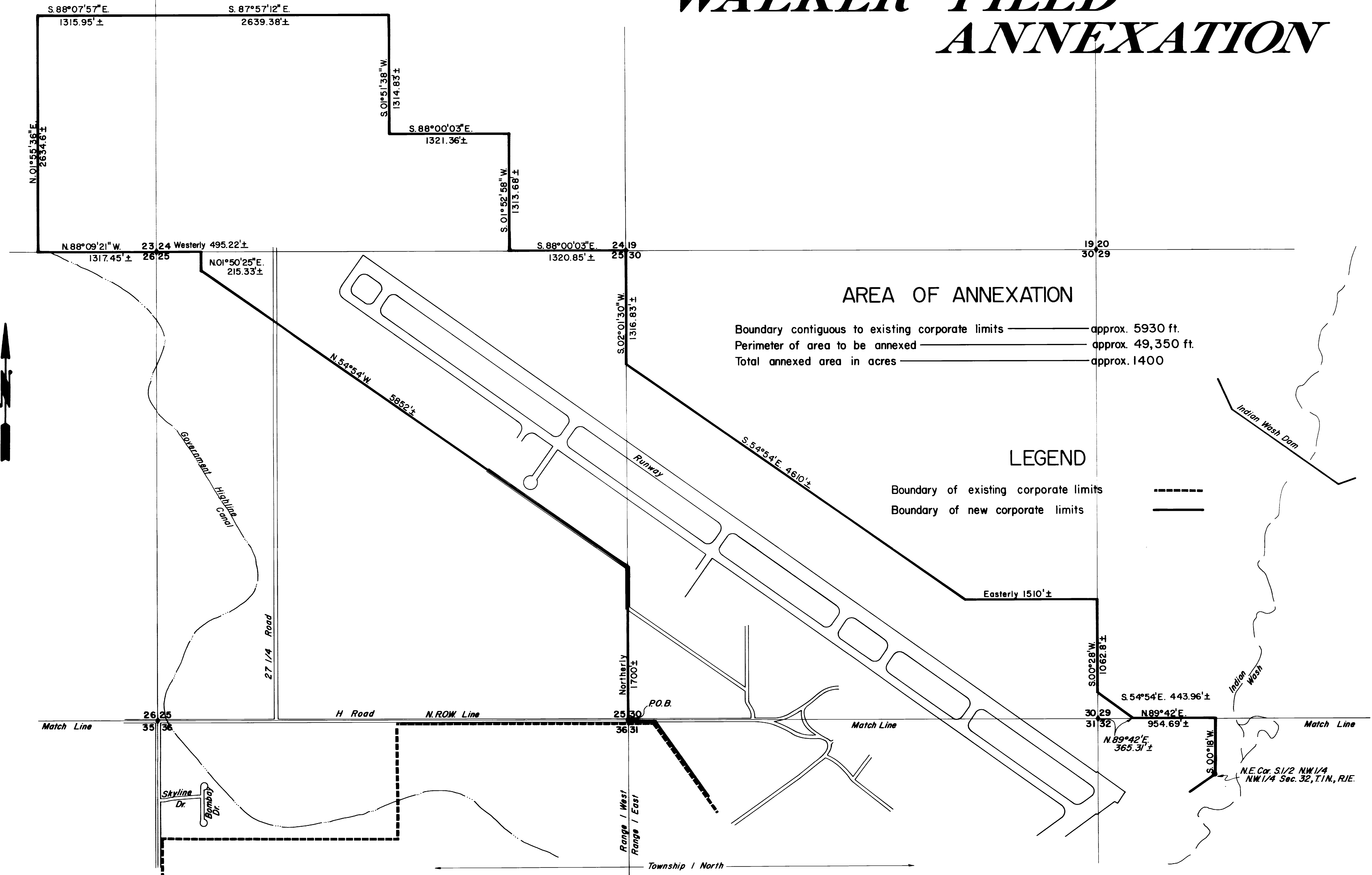


WALKER FIELD ANNEXATION



AREA OF ANNEXATION

Boundary contiguous to existing corporate limits ————— approx. 5930 ft.
 Perimeter of area to be annexed ————— approx. 49,350 ft.
 Total annexed area in acres ————— approx. 1400

LEGEND

Boundary of existing corporate limits —————
 Boundary of new corporate limits —————



DESCRIPTION	DATE	DRAWN BY	DATE	SCALE
REVISION Δ		CHECKED BY <i>D.W.</i>	DATE <i>10-13-51</i>	PLAN PROFILE
REVISION Δ		APPROVED BY	DATE	HORIZ. 1" = 500'
REVISION Δ		FIELD BOOK NO.	PAGE	HORIZ. VERT.

DEPARTMENT OF PUBLIC WORKS AND UTILITIES
ENGINEERING DIVISION
CITY OF GRAND JUNCTION, COLORADO

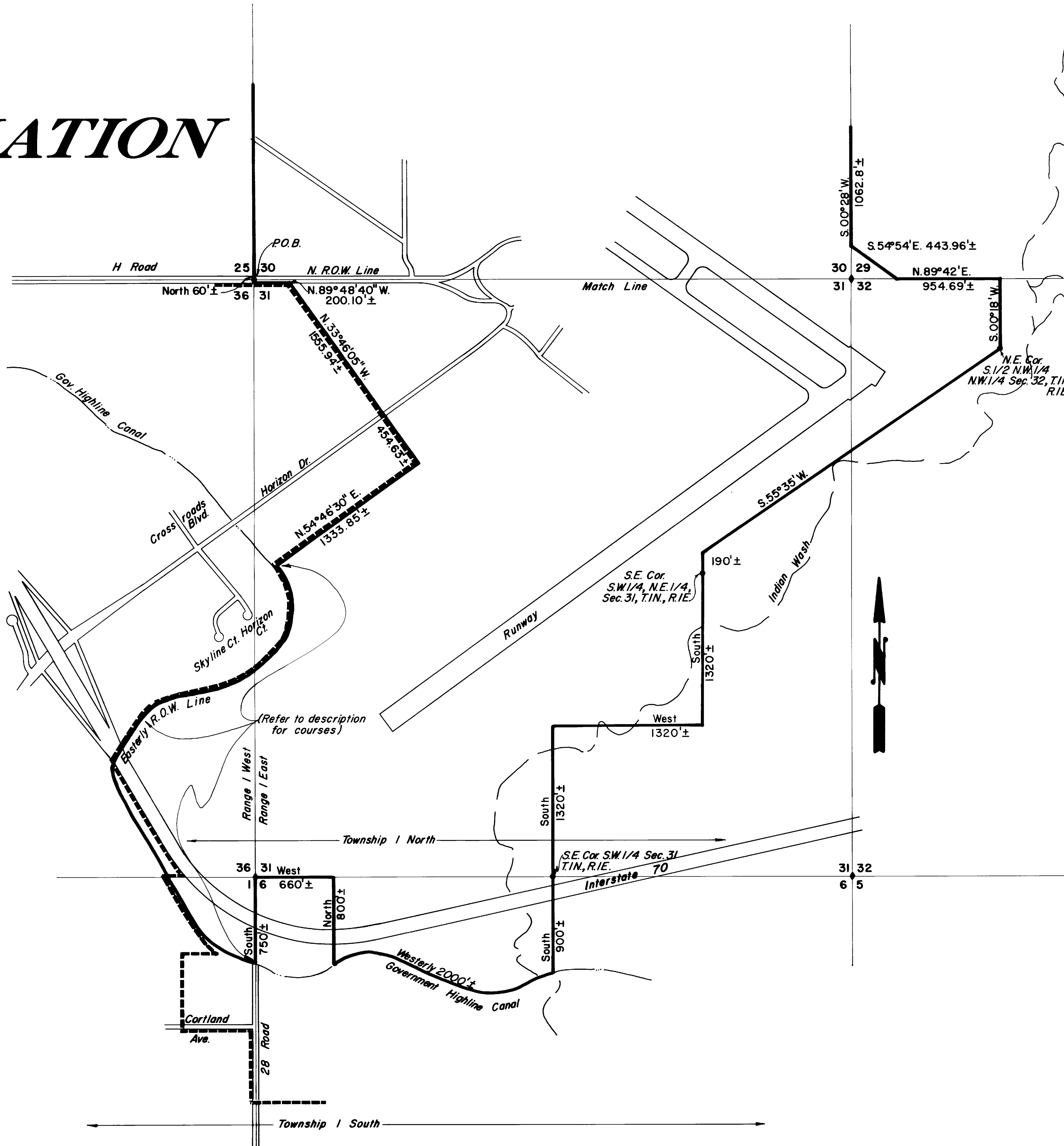
WALKER FIELD ANNEXATION

SHEET NO. <u>1</u>
OF <u>2</u>
FILE NO. <u>01-702</u>

WALKER FIELD ANNEXATION

DESCRIPTION

A tract of land situated in: Sections 23, 24, 25 and 36, Township 1 North, Range 1 West; Sections 29, 30, 31 and 32, Township 1 North, Range 1 East; Section 6, Township 1 South, Range 1 East; and Section 1, Township 1 South, Range 1 West, all of the Ute Principal Meridian, Mesa County, Colorado, more particularly described as follows: Beginning at the point of intersection of the North right-of-way line of "H" Road and the West line of the SW 1/4 of Section 30, T1N, R1E, from which the Southwest corner of Section 30 bears South 00°00' West a distance of 30 feet more or less; Thence, Northerly along said West line of Section 30, a distance of approximately 1700 feet more or less to a point, said point also being on the East line of Section 25, T1N, R1W, of the Ute Principal Meridian, Mesa County, Colorado; Thence, North 54°54' West, a distance of approximately 5852 feet more or less, to a point which lies on the West line of the E 1/2 of the NE 1/4 of the NW 1/4 of the NW 1/4 of the NW 1/4 of Section 25; Thence North 01°50'25" East a distance of approximately 215.33 feet more or less, along the said West line of the E 1/2 of the NE 1/4 of the NW 1/4 of the NW 1/4 of the NW 1/4 of Section 25, to a point which is the Northwest corner of the E 1/2 of the NE 1/4 of the NW 1/4 of the NW 1/4 of the NW 1/4 of Section 25; Thence, Westerly a distance of approximately 495.22 feet more or less to a point which is the common corner of Sections 23, 24, 25 and 26, T1N, R1W of the Ute Principal Meridian, Mesa County, Colorado; Thence, continuing Westerly along the South line of Section 23, North 88°09'21" West, a distance of approximately 1317.45 feet more or less to a point which is the Southwest corner of the SE 1/4 of the SE 1/4 of Section 23; Thence, North 91°55'36" East along the West line of the E 1/2 of the SE 1/4 of the SE 1/4 of Section 23, a distance of approximately 2634.6 feet more or less to a point which is the Northwest corner of the NE 1/4 of the SE 1/4 of Section 23; Thence, South 88°07'57" East along the North line of the E 1/2 of the SE 1/4 of Section 23, a distance of approximately 1315.95 feet more or less to a point which is the common corner of the Northeast corner of the SE 1/4 of Section 23, and the Northwest corner of the SW 1/4 of Section 24, thence continuing Eastward, South 87°57'12" East along the North line of the SW 1/4 of Section 24, a distance of approximately 2639.38 feet more or less to a point which is the Northeast corner of the SW 1/4 of Section 24; Thence, South 01°51'38" West along the East line of the SW 1/4 of Section 24, a distance of approximately 1314.83 feet more or less to a point which is the Northeast corner of the SE 1/4 of the SW 1/4 of Section 24; Thence, South 88°00'03" East along the North line of the SW 1/4 of the SE 1/4 of Section 24, a distance of approximately 1321.36 feet more or less to a point which is the Northeast corner of the SW 1/4 of the SE 1/4 of Section 24; Thence, South 01°52'58" West along the East line of the SW 1/4 of the SE 1/4 of Section 24 a distance of approximately 1313.68 feet more or less to a point which is the Southeast corner of the SW 1/4 of the SE 1/4 of Section 24; Thence, South 88°03'03" East along the South line of Section 24 a distance of approximately 1320.85 feet more or less to a point which is the common corner of Sections 24 and 25, T1N, R1W and Section 19 and 30, T1N, R1E of the Ute Principal Meridian, Mesa County, Colorado; Thence, South 02°01'30" West along the East line of Section 25 a distance of approximately 1316.83 feet more or less to a point; Thence, South 54°54' East a distance of approximately 4610 feet more or less to a point on the North line of the SW 1/4 of the SE 1/4 of Section 30, T1N, R1E of the Ute Principal Meridian, Mesa County, Colorado; Thence, Easterly along the North line of the S 1/2 of the SE 1/4 of Section 30 a distance of approximately 1510 feet more or less to a point which is the Northeast corner of the SE 1/4 of the SE 1/4 of Section 30; Thence South 00°28' West along the East line of Section 30 a distance of approximately 1062.8 feet more or less to a point which lies North 00°28' East a distance of approximately 257.20 feet more or less from the common corner of Sections 29, 30, 31 and 32, T1N, R1E of the Ute Principal Meridian, Mesa County, Colorado; Thence, South 54°54' East a distance of approximately 443.96 feet more or less to a point on the South line of Sections 29, 30, 31 and 32; Thence, North 89°42' East along the North line of Section 32, a distance of approximately 954.69 feet more or less to a point which is the Northeast corner of the NW 1/4 of the NW 1/4 of Section 32; Thence, South 00°18' West along the East line of the NW 1/4 of the NW 1/4 of Section 32 to the Northeast corner of the S 1/2 of the NW 1/4 of the NW 1/4 of Section 32; Thence, South 55°35' West to a point which lies on the East line of the SW 1/4 of the NE 1/4 of Section 31, T1N, R1E of the Ute Principal Meridian, Mesa County, Colorado, said point being approximately 190 feet more or less North of the Southeast corner of the SW 1/4 of the NE 1/4 of said Section 31; Thence, South a distance of approximately 190 feet more or less to a point which is the Southeast corner of the SW 1/4 of the NE 1/4 of Section 31; Thence, continuing South along the East line of the NW 1/4 of the SE 1/4 of the SW 1/4 of the NE 1/4 of Section 31, a distance of approximately 1320 feet more or less to a point which is the Southeast corner of the NW 1/4 of the SE 1/4 of Section 31, a distance of approximately 1320 feet more or less to a point which is the Southwest corner of the NW 1/4 of the SE 1/4 of Section 31; Thence, South along the East line of the SE 1/4 of the SW 1/4 of Section 31, a distance of approximately 1320 feet more or less to a point which is the Southeast corner of the SW 1/4 of Section 31; Thence, South along the East line of the NE 1/4 of the NW 1/4 of Section 6, T1S, R1E, of the Ute Principal Meridian, Mesa County, Colorado a distance of approximately 900 feet more or less to a point which is on the Northerly right-of-way line of the U.S. Government Highline Canal; Thence, Westerly along said right-of-way line of the U.S. Government Highline Canal, a distance of approximately 2000 feet more or less to a point which is on the West line of the E 1/2 of the NW 1/4 of the NW 1/4 of Section 6; Thence, North along the West line of the E 1/2 of the NW 1/4 of the NW 1/4 of Section 6, a distance of approximately 800 feet more or less to a point on the North line of Section 6; Thence, West along the North line of Section 6, a distance of approximately 660 feet more or less to a point which is the common corner of Section 6, T1S, R1E; Section 31, T1N, R1E; Section 36, T1N, R1W, and Section 1, T1S, R1W, of the Ute Principal Meridian, Mesa County, Colorado; Thence, South along the East line of said Section 1, a distance of approximately 750 feet more or less to a point which is on the Northerly right-of-way line of the U.S. Government Highline Canal; Thence, Northwesterly along said right-of-way line of the Northerly right-of-way line of the U.S. Government Highline Canal, a distance of approximately 1080 feet more or less to a point which is on the North line of Section 1, T1S, R1W, which is also the same point as the South line of Section 36, T1N, R1W, of the Ute Principal Meridian, Mesa County, Colorado; Thence, Northwesterly along the Easterly right-of-way line of the U.S. Government Highline Canal, from that said point on the South line of Section 36, a distance of approximately 1360 feet more or less to a point which is on the North line of the SE 1/4 of the SE 1/4 of Section 36, said point being North 89°56'40" West, a distance of approximately 1052.02 feet more or less from the Southeast corner of the NE 1/4 of the SE 1/4 of Section 36; Thence, along the Easterly right-of-way line of the U.S. Government Highline Canal by the following courses and distances: Thence North 26°21'00" East, a distance of 55.90 feet; Thence along the arc of a curve to the right whose radius is 360.28 feet and whose long chord bears North 54°30'30" East 340.04 feet; Thence North 82°40'00" East, a distance of 276.58 feet; Thence along the arc of a curve to the left whose radius is 766.78 feet and whose long chord bears North 68°12'30" East, 382.90 feet; Thence North 53°45'00" East, a distance of 149.41 feet to a point which is on the East line of Section 36 (said point being also on the West line of Section 31) and bears North 00°00'00" East, a distance of 514.33 feet from the Southeast corner of the NE 1/4 of the SE 1/4 of Section 36; Thence North 00°00'00" East, a distance of 149.14 feet more or less to a point located on the Westerly right-of-way line of the U.S. Government Highline Canal; Thence, along the Westerly right-of-way line of the U.S. Government Highline Canal by the following courses and distances: Thence North 53°45' East a distance of 88.67 feet to a point; Thence along the arc of a curve to the left whose radius is 447.47 feet and whose long chord bears North 10°26'40" East, 613.85 feet to a point located on the North line of the NW 1/4 of the SW 1/4 of Section 31, said point being South 89°52' East, a distance of 182.70 feet from the West Quarter corner of Section 31; Thence South 89°52' East along the North line of the NW 1/4 of the SW 1/4 of Section 31, a distance of approximately 159.25 feet more or less to a point on the Easterly right-of-way line of the U.S. Government Highline Canal; Thence along said Easterly right-of-way line of the U.S. Government Highline Canal by the following courses and distances; Thence along the arc of a curve to the left whose radius is 587.47 feet and whose long chord bears North 32°16'10" West, 161.40 feet; Thence North 40°10' West, 44.40 feet to a point; Thence leaving the right-of-way of the U.S. Government Highline Canal, North 54°46'30" East, a distance of 1333.85 feet to a point on the Easterly line of the SW 1/4 of the NW 1/4 of Section 31; Thence North 33°46'05" West, a distance of 454.63 feet to a point on the North line of the SW 1/4 of the NW 1/4 of Section 31, said point also being the same as being on the South line of the NW 1/4 of the NW 1/4 of Section 31; Thence North 33°46'05" West, a distance of approximately 1555.94 feet more or less to a point on the South right-of-way line of "H" Road; Thence North 89°48'40" West along the South right-of-way line of "H" Road, a distance of approximately 200.10 feet more or less to a point of intersection of the South right-of-way line of "H" Road and the West line of Section 31, said point being South 00°00'00" West a distance of 30.00 feet from the common corner of Section 31, T1N, R1E; Section 36, T1N, R1W; Section 25, T1N, R1W; and Section 30, T1N, R1E of the Ute Principal Meridian, Mesa County, Colorado; Thence North 00°00'00" East along the West line of said Section 31 and the West line of said Section 30, a distance of approximately 60 feet more or less to the true point of beginning. Also including that adjacent portion of the U.S. Gov. Highline Canal not already annexed to the City.



2000
ORDINANCE NO.

10-18-81
EFFECTIVE DATE

REVISION	DESCRIPTION	DATE	DRAWN BY	DATE	SCALE
REVISION A			CHECKED BY D.W.	DATE 10-13-81	PLAN PROFILE
REVISION B			APPROVED BY	DATE	HORIZ. 1"=500'
REVISION C			FIELD BOOK NO.	PAGE	HORIZ. VERT.

DEPARTMENT OF PUBLIC WORKS AND UTILITIES
ENGINEERING DIVISION
CITY OF GRAND JUNCTION, COLORADO

WALKER FIELD ANNEXATION

SHEET NO. 2
OF 2
FILE NO. 01-702