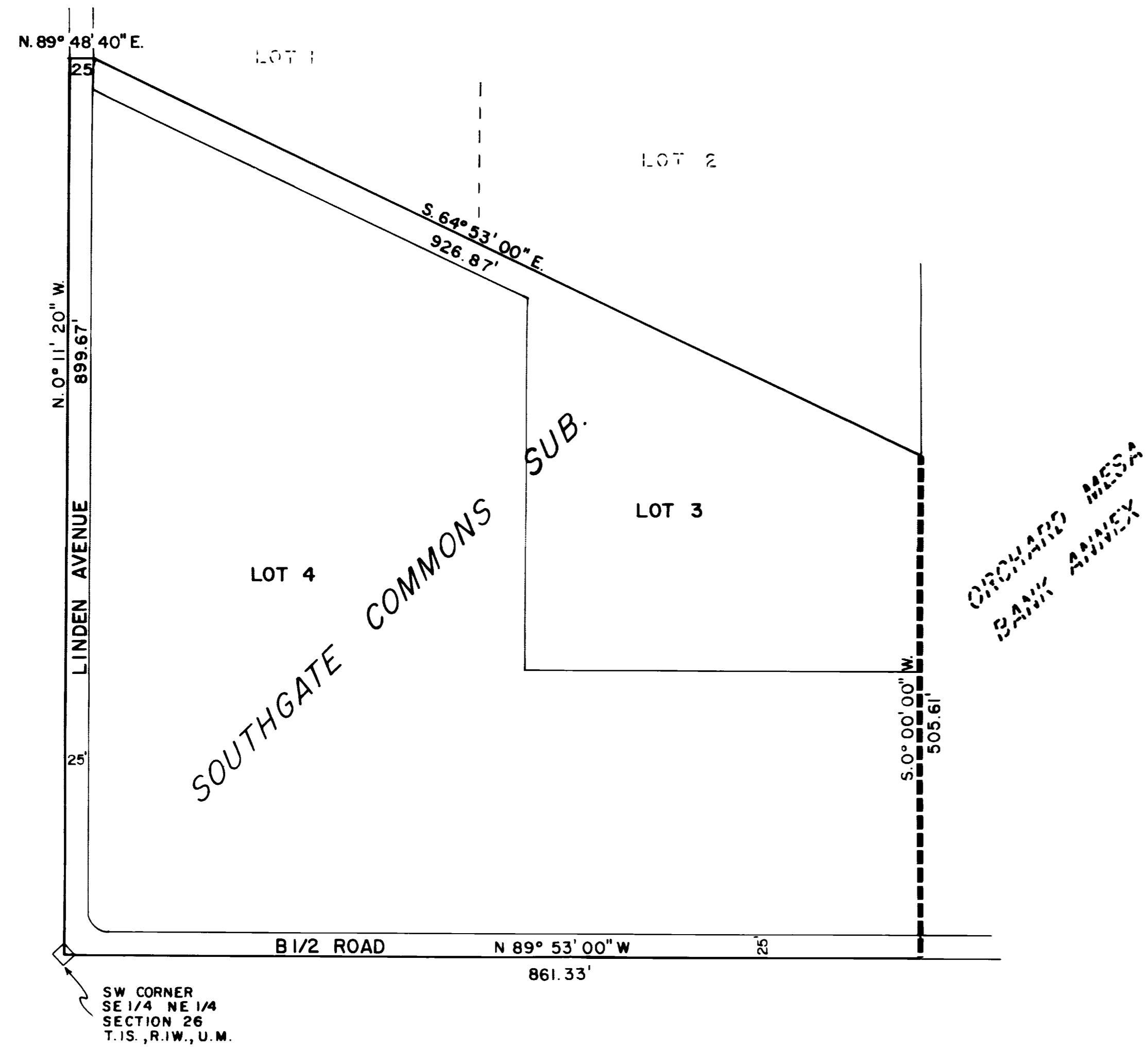


SOUTHGATE ANNEXATION



DESCRIPTION

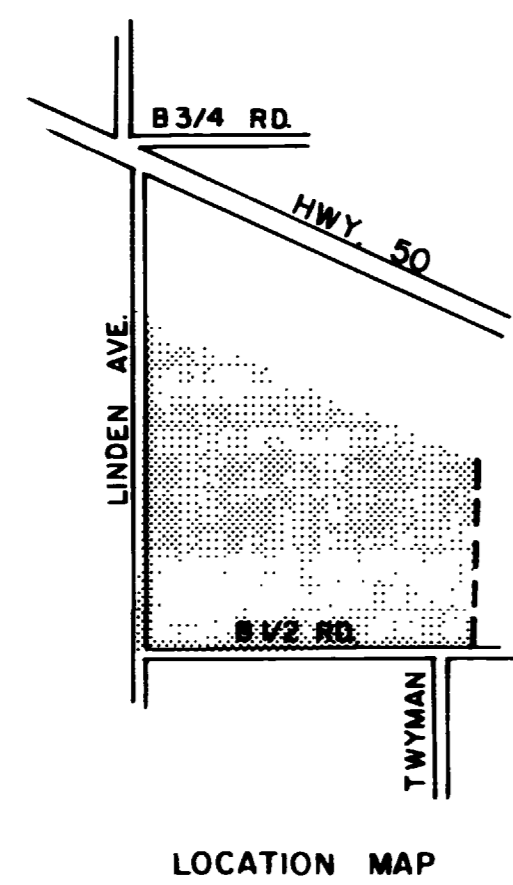
Lots 3 and 4 of Southgate Commons Subdivision and adjacent road right-of-way to center line of Linden Avenue on West and to center line of B 1/2 Road on South.

LEGEND

Boundary of existing corporate limits
 Boundary of new corporate limits

AREA OF ANNEXATION

Boundary contiguous to existing corporate limits approx. 505.61 ft.
 Perimeter of area to be annexed approx. 3,218.48 ft.
 Total annexed area in acres 14, more or less



2132
ORDINANCE NO.

7/24/83
EFFECTIVE DATE

| | | | | |
|-------------------|-------------|------|---------------------------|-------------|
| REVISION Δ | DESCRIPTION | DATE | DRAWN BY | DATE |
| REVISION Δ | | | CHECKED BY | DATE |
| REVISION Δ | | | APPROVED BY <i>J.P.M.</i> | DATE 7/2/83 |
| REVISION Δ | | | FIELD BOOK NO. | PAGE |

**DEPARTMENT OF PUBLIC WORKS AND UTILITIES
ENGINEERING DIVISION**

CITY OF GRAND JUNCTION, COLORADO

SCALE
PLAN: HORIZ. 1" = 100'
PROFILE: HORIZ. _____ VERT. _____

| | |
|-----------|------------|
| SOUTHGATE | ANNEXATION |
|-----------|------------|

| | |
|-------------|------|
| SHEET NO. 1 | OF 1 |
| FILE NO. | |