

VALLEY PLAZA WEST ANNEXATION

DESCRIPTION

Lots 1, 2, and 3, Sawtelle Subdivision, and
24 1/2 Road right-of-way adjacent on West.

LEGEND

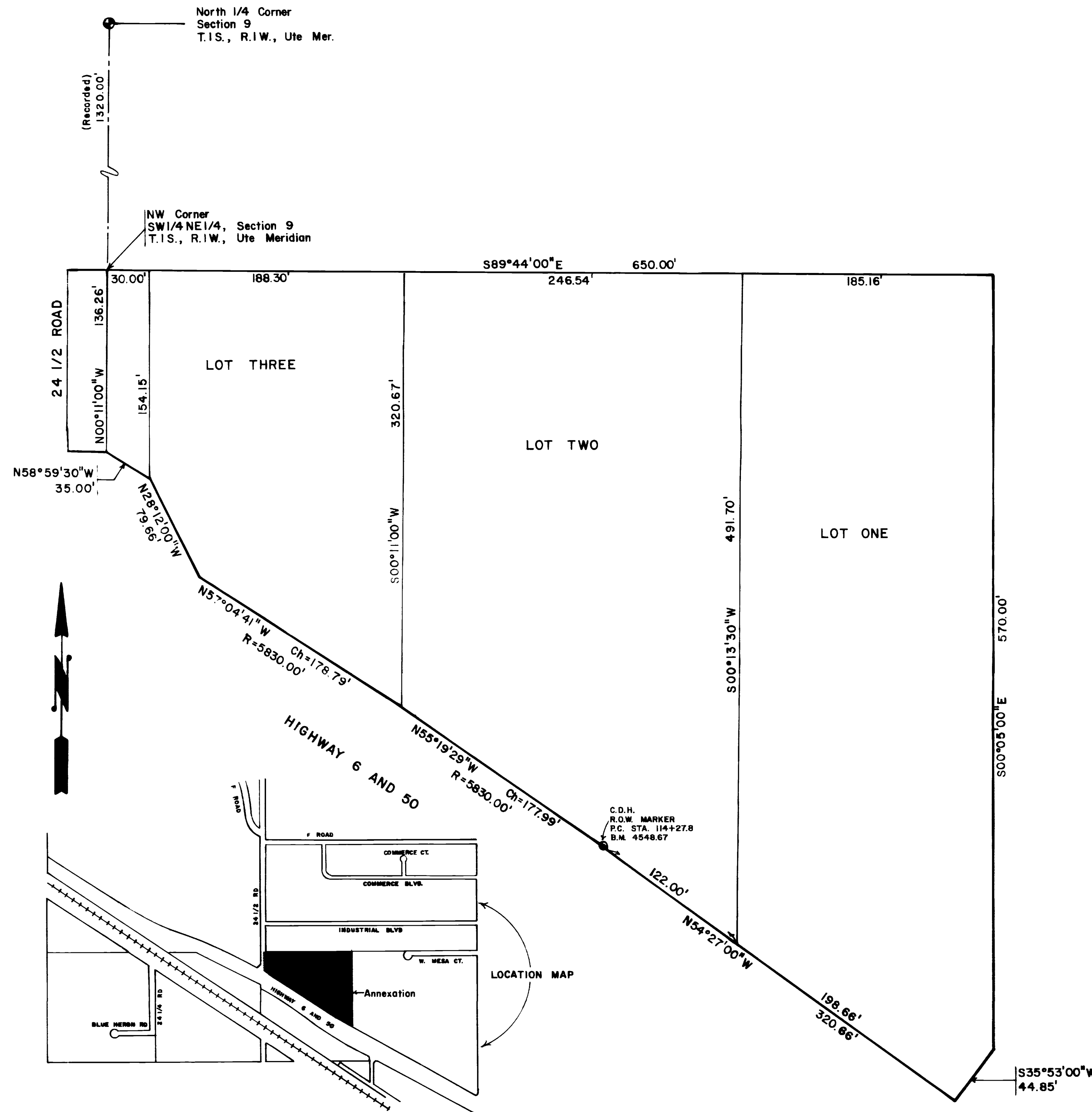
Boundary of existing corporate limits
Boundary of new corporate limits

AREA OF ANNEXATION

Boundary contiguous to existing corporate limits — approx. 136.26 ft.
Perimeter of area to be annexed — approx. 2178.36 ft.
Total annexed area in acres — approx. 6.865

2098
ORDINANCE NO.

FEB/11/1983
EFFECTIVE DATE



REVISION	DESCRIPTION	DATE	DRAWN BY	DES	DATE	CHECKED BY	DATE	APPROVED BY	DATE	FIELD BOOK NO.	PAGE
REVISION											
REVISION											
REVISION											
REVISION											

DEPARTMENT OF PUBLIC WORKS AND UTILITIES
ENGINEERING DIVISION
CITY OF GRAND JUNCTION, COLORADO

VALLEY PLAZA WEST ANNEXATION

SHEET NO.	1
OF	1
FILE NO.	